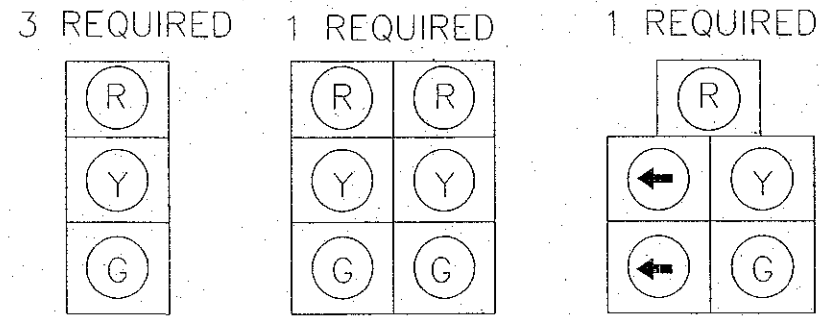


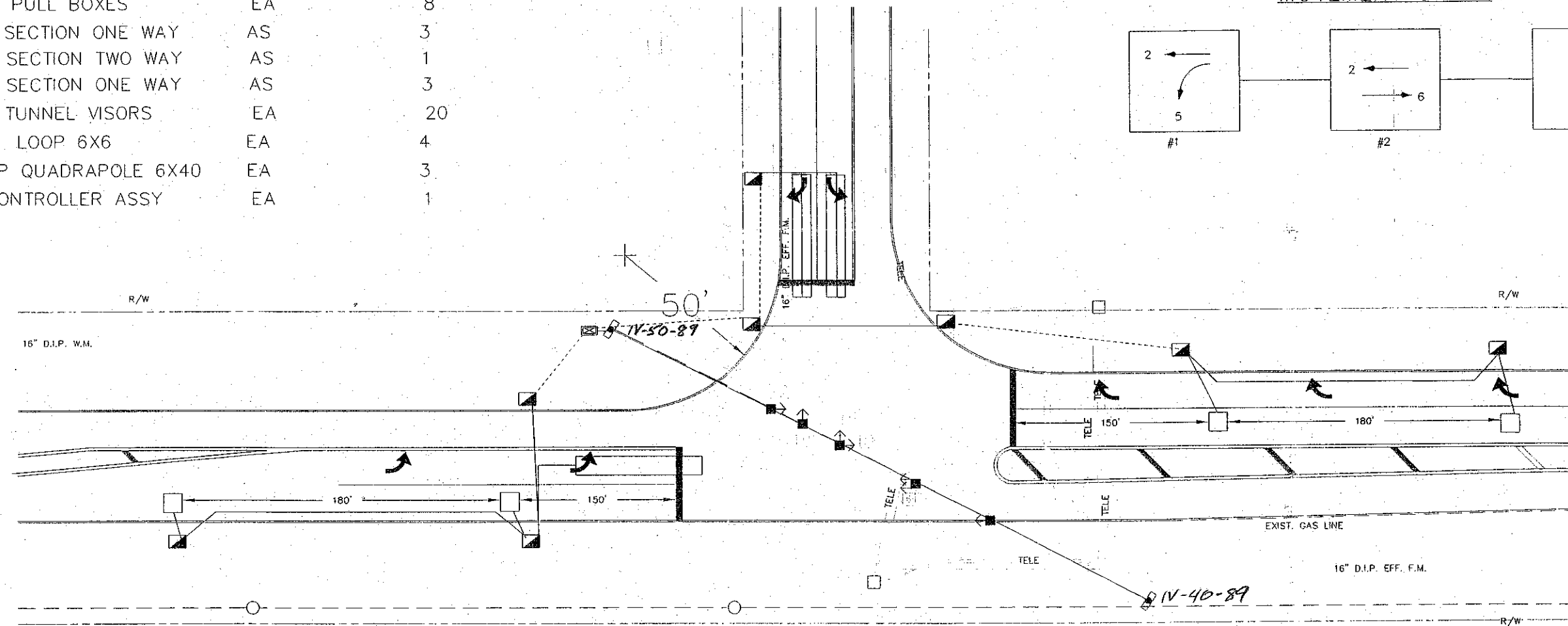
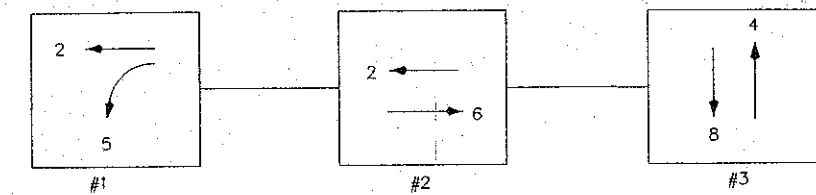
SUGGESTED INITIAL CONTROLLER TIMINGS

TIMING FUNCTION	MIN	EXT	MAX	CL	ALL RED	WALK	FDW	RECALL	DETECTOR FUNCTION
2	17	3.0	50.0	4.0	1.0	-	-	MIN	LOCK
4	4	3.0	30.0	4.0	1.0	-	-	OFF	NL
5	4	3.0	20.0	4.0	1.0	-	-	OFF	NL
6	17	3.0	50.0	4.0	1.0	-	-	MIN	LOCK



634-4-112	SPAN WIRE	PL	1
635-1-11	PULL BOXES	EA	8
650-1-331	3 SECTION ONE WAY	AS	3
650-1-332	3 SECTION TWO WAY	AS	1
650-9-331	5 SECTION ONE WAY	AS	3
INSTALL ONLY	TUNNEL VISORS	EA	20
660-2-102	LOOP 6X6	EA	4
660-2-106	LOOP QUADRAPOLE 6X40	EA	3
670-132-000	CONTROLLER ASSY	EA	1

MOVEMENT CHART



SPECIAL NOTES:

- REMOVE EXISTING CONTROLLER ASSEMBLY, SIGNAL HEAD ASSEMBLIES, PULL BOXES AND NOTIFY LAKE COUNTY TRAFFIC OPERATIONS FOR PICKUP. (904) 742-1766
- THE CONTRACTOR SHALL BE RESPONSIBLE FOR THE LOCATE AND CARE OF ALL UTILITIES.
- THE CONTRACTOR SHALL NOTIFY THE LAKE COUNTY TRAFFIC SAFETY ENGINEER 24 HOURS PRIOR TO CONSTRUCTION WORK.(904) 742-1766
- STRIPING MODIFICATIONS (IF REQUIRED) WILL BE COMPLETED BY THE COUNTY.
- THE CONTRACTOR IS RESPONSIBLE FOR THE SETUP AND MAINTENANCE OF THE NECESSARY WORKZONE AREA AND THE PLACEMENT OF CONSTRUCTION WORK ZONE WARNING SIGNS AS PER THE M.U.T.C.D. AND FDOT STANDARDS.
- LOOP HOME RUNS SHALL BE INSTALLED IN THE PAVEMENT WHERE POSSIBLE AND ALL SAW CUTS SHALL BE AT LEAST 2" DEEP, WITH NO MORE THAN TWO HOME RUNS PER SAW CUT.
- HOMERUNS FOR TYPE F LOOPS SHALL BE AT THE BACK SIDE OF THE LOOP.
- SIGNAL POLES MAY BE DRILLED TO ACHIEVE A MINIMUM SIGNAL HEAD HEIGHT OF 18'

LAKE COUNTY PUBLIC SERVICES DEPARTMENT

SIGNALIZATION PLAN  
SR 44 & CR 44A

S. -	T. -	R. -
SURVEYED -	DATE	
FIELD BOOK -	PAGE	
DRAWN - CSG	DATE: AUG'95	
DESIGNED - JM	DATE	
APPROVED - DAG	DATE	
REVISION:		
REVISION:		
CAD NO. - 157ASIG.DWG	SIGNATURE	DATE
SHEET 1 OF 1	9-8-95	

DONALD A. GRIFFEY, P.E. FL. REG. #36799