

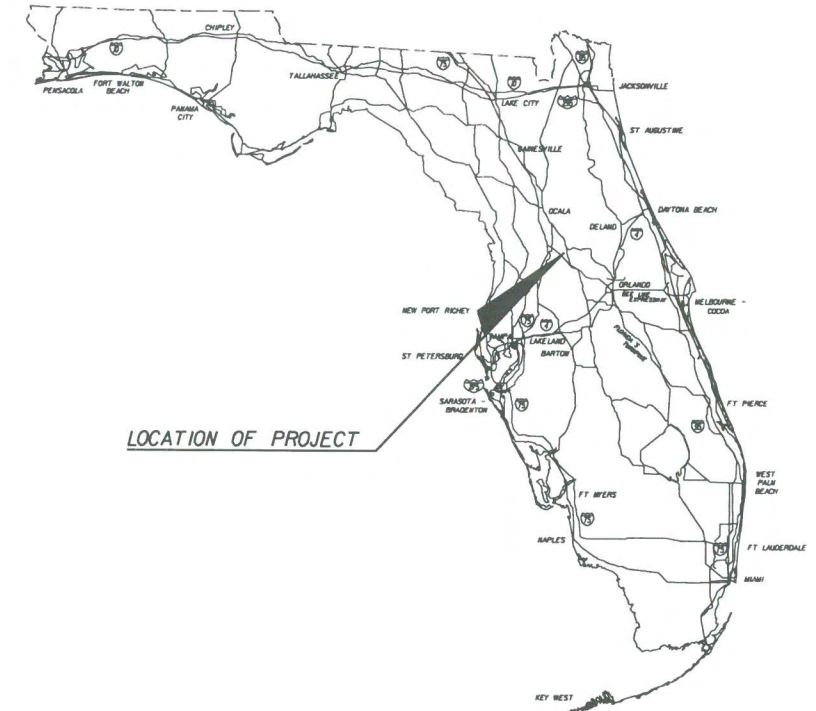
# LAKE COUNTY CONTRACT PLANS

## SIGNALIZATION PLANS

### CITRUS TOWER BOULEVARD AND NORTH RIDGE BOULEVARD

#### INDEX OF SIGNALIZATION PLANS

SHEET NO.	SHEET DESCRIPTION
T-1	KEY SHEET
T-2	TABULATION OF QUANTITIES
T-3	GENERAL NOTES
T-4	SIGNALIZATION PLAN
T-5	STRAIN POLE DETAILS
T-6	GUIDE SIGN WORKSHEET



SIGNALIZATION SHOP DRAWINGS  
TO BE SUBMITTED TO:

Kathryn L. Lee, P.E.  
3751 Maguire Boulevard, Suite III  
Orlando, FL 32803  
Phone: 407-898-5424 Fax: 407-898-5425

PLANS PREPARED BY:



GMB Engineers & Planners, Inc.  
3751 Maguire Boulevard, Suite III  
Orlando, FL 32803  
Phone: 407-898-5424 Fax: 407-898-5425

NOTE: THE SCALE OF THESE PLANS MAY  
HAVE CHANGED DUE TO REPRODUCTION.

GOVERNING STANDARDS AND SPECIFICATIONS:  
FLORIDA DEPARTMENT OF TRANSPORTATION,  
ROADWAY AND TRAFFIC DESIGN STANDARDS  
DATED JANUARY 2006, AND  
STANDARDS SPECIFICATIONS FOR ROAD AND BRIDGE  
CONSTRUCTION DATED 2007  
AS AMENDED BY CONTRACT DOCUMENTS.

KEY SHEET REVISIONS		
DATE	BY	DESCRIPTION

SIGNALIZATION PLANS  
ENGINEER OF RECORD:

*Kathryn L. Lee*  
KATHRYN L. LEE, P.E.

P.E. NO. 62420

DATE: 11/28/06 5/2/07

SHEET  
NO.

T-1

# TABULATION OF QUANTITIES

PAY ITEM NO.	DESCRIPTION	UNIT	SHEET NUMBERS												GRAND TOTAL		REF. SHEET
			T-4												PLAN	FINAL	
			PLAN	FINAL	PLAN	FINAL	PLAN	FINAL	PLAN	FINAL	PLAN	FINAL	PLAN	FINAL			
102-1	MAINTENANCE OF TRAFFIC	LS	1													1	
630-1-12	CONDUIT (F & I) (UNDERGROUND)	LF	795													795	
630-1-14	CONDUIT (F & I) (UNDERGROUND - JACKED)	LF	295													295	
632-7-1	CABLE (SIGNAL) (F & I)	PI	1													1	
634-5-1	FIBERGLASS INSULATOR	LF	8													8	
635-1-11	PULL AND JUNCTION BOXES (F & I) (PULL BOX)	EA	14													14	
635-1-15	PULL AND JUNCTION BOXES (FIBER OPTICS)	EA	1													1	
639-1-22	ELECTRICAL POWER SERVICE (UNDERGROUND POWER SOURCE)	AS	1													1	
639-2-1	ELECTRICAL SERVICE WIRE (F & I)	LF	310													310	
641-16-142	PRESTRESSED CONCRETE POLES (42')	EA	1													1	
641-16-146	PRESTRESSED CONCRETE POLES (46')	EA	1													1	
650-51-311	TRAFFIC SIGNAL, STANDARD (F & I) (3 SECTION, 1 WAY)	AS	4													4	
650-51-511	TRAFFIC SIGNAL, STANDARD (F & I) (5 SECTION, 1 WAY)	AS	4													4	
653-181	PEDESTRIAN SIGNAL (F & I) (LED) (1 WAY) (COUNTDOWN)	EA	4													4	
653-182	PEDESTRIAN SIGNAL (F & I) (LED) (2 WAY) (COUNTDOWN)	EA	2													2	
659-101	SIGNAL HEAD AUXILIARIES (F & I) (BACK PLATES, 3-SECTION)	EA	2													2	
659-109	SIGNAL HEAD AUXILIARIES (F & I) (CONCRETE PEDESTAL)	EA	2													2	
659-118	SIGNAL HEAD AUXILIARIES (F & I) (BACK PLATES, 5-SECTION)	EA	2													2	
660-1-109	INDUCTIVE LOOP DETECTOR (F & I) (TYPE 9, 2 CH, SS, RM)	EA	2													2	
660-1-110	INDUCTIVE LOOP DETECTOR (F & I) (TYPE 10, 2 CH, SS, RM, TD)	EA	3													3	
660-2-102	LOOP ASSEMBLY (F & I) (TYPE B) (6' X 6')	AS	2													2	
660-2-106	LOOP ASSEMBLY (F & I) (TYPE F) (6' X 40')	AS	8													8	
663-74-11	PEDESTRIAN DETECTOR (F & I) (POLE OR CONTROLLER MOUNTED DETECTOR STATION)	AS	8													8	
665-11	PEDESTRIAN DETECTOR (F & I) (POLE OR CONTROLLER MOUNTED DETECTOR STATION)	AS	8													8	
670-5-111	VEHICLE DETECTOR ASSEMBLIES (OPTICOM, 4-WAY)	AS	1													1	
699-1-1	SIGN, INTERNALLY ILLUMINATED (LED)	EA	4													4	
700-41-10	SIGN (MULTI-POST)	EA	1													1	
700-46-11	SIGN (REMOVAL)	AS	7													7	

**PAY ITEM NOTES:**

1. LUMP SUM MAINTENANCE OF TRAFFIC SHALL INCLUDE ALL COSTS ASSOCIATED WITH THE MAINTENANCE OF TRAFFIC IN THE WORK ZONE. THIS INCLUDES SIGNS, WARNING DEVICES AND ALL OTHER ITEMS REQUIRED FOR THE INSTALLATION OF THE TRAFFIC SIGNAL.

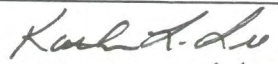
REVISIONS			ENGINEER OF RECORD						<b>GMB Engineers &amp; Planners, Inc.</b> 3751 Maguire Boulevard, Suite 111 Orlando, FL 32803 Phone: 407-898-5424 Fax: 407-898-5425			<b>LAKE COUNTY</b>		<i>Citrus Tower Blvd. at North Ridge Blvd.</i> <b>TABULATION OF QUANTITIES</b>	
DATE	BY	DESCRIPTION	DESIGNED BY	NAME	DATE	DRAWN BY	NAME	DATE							
			CHECKED BY	KLL	09/06	CHECKED BY	KLL	09/06							
			SUPERVISED BY: KATHRYN L. LEE P.E. *62420 <i>Karl Adu</i> #62420 - 11/28/06 5/2/07												


# GENERAL NOTES

SHEET NO.

T-3

1. IT SHOULD BE NOTED THAT NO TEST BORINGS WERE MADE WHERE CONDUIT RUNS ARE TO BE INSTALLED BY JACKING AND TRENCHING AND/OR WHERE POLE INSTALLATIONS ARE LOCATED. IT SHALL BE THE CONTRACTOR'S RESPONSIBILITY TO EXAMINE JOB SITE CONDITIONS BEFORE SUBMITTING BID PROPOSALS IN ACCORDANCE WITH SECTION 2-4 OF THE SPECIFICATIONS. THE CONTRACTOR SHALL HAND DIG THE FIRST 4' AT EACH POLE LOCATION TO VERIFY NO UTILITY CONFLICT.
2. ALL CONDUIT EXCEPT ELECTRICAL POWER SERVICE CONDUIT SHALL BE 2 INCH MINIMUM UNLESS OTHERWISE SPECIFIED IN THE PLANS.
3. PULL BOXES SHALL BE PLACED BEHIND CURB AND GUTTER. IF THERE IS NO CURB AND GUTTER THEN PULL BOXES SHALL BE PLACED AT LEAST 10 FEET FROM THE EDGE OF PAVEMENT.
4. THE BASE OF THE CONTROLLER CABINETS SHALL BE EQUAL TO OR GREATER THAN THE ELEVATION OF THE ROADWAY.
5. THE CABINET DOOR SHALL OPEN AWAY FROM THE INTERSECTION.
6. THE CONTRACTOR SHALL NOTIFY THE PROJECT ENGINEER AT LEAST 48 HOURS IN ADVANCE OF LOOP CUTTING. THE PROJECT ENGINEER WILL CONTACT THE COUNTY TRAFFIC ENGINEER WHO MAY CHALK THE LOOPS AND OBSERVE THEIR INSTALLATION IF HE SO DESIRES.
7. ALL LOOPS TO HAVE INDIVIDUAL LEAD-INS TO CABINET. LOOP SPLICES TO BE ACCORDING TO FDOT SPECIFICATIONS.
8. THE CONTRACTOR SHALL NOTIFY THE APPROPRIATE UTILITY DEPARTMENT, MAINTAINING AGENCY AND THE FDOT AT LEAST 48 HOURS IN ADVANCE OF POLE SETTING OPERATIONS WHERE A CONFLICT WITH OVERHEAD ELECTRICAL CONDUCTORS IS EXPECTED AND IN ALL CASES WHERE JOINT USE POLES ARE TO BE USED.
9. THE CONTRACTOR SHALL BE RESPONSIBLE FOR ESTABLISHING THE PROPER AMOUNT OF RAKE WITH RESPECT TO LOADING TO BE USED ON POLES AT TIME OF INSTALLATION. THIS INFORMATION IS AVAILABLE FROM THE POLE MANUFACTURER.
10. THE CONTRACTOR SHALL NOTIFY THE PROJECT ENGINEER AT LEAST 48 HOURS IN ADVANCE OF ANY LANE CLOSURES ON SR 50. NO LANE CLOSURES FROM 6:00 AM - 8:00 PM EASTBOUND AND WESTBOUND. THE TIMES MAY BE ADJUSTED BY THE PROJECT ENGINEER IF NECESSARY TO MEET FIELD CONDITIONS, LANE CLOSURES ARE REQUIRED FOR OVERHEAD SIGNAL WORK AND LOOP INSTALLATION AND SHALL FOLLOW THE FDOT ROADWAY AND TRAFFIC DESIGN STANDARDS (2004).
11. WHEN THE CONTRACTOR IS PERFORMING SIGNAL WORK IN AN INTERSECTION (INSTALLING CONDUIT IN THE STREET, REMOVING EXISTING SIGNAL EQUIPMENT, INSTALLING NEW SIGNAL EQUIPMENT, INSTALLING LOOPS AND RUNS, AND TURNING ON OF NEW SIGNALS) WHERE A LANE IS CLOSED AN OFF-DUTY LAW ENFORCEMENT OFFICER IS INCIDENTAL TO THE COST OF THE PROJECT.
12. ALL CABLE SHALL BE PULLED IN THE CONDUIT WITH A CABLE GRIP DESIGNED TO PROVIDE A FIRM HOLD ON THE EXTERIOR COVERING OF THE CABLE. A WINCH WITH A SLIP CLUTCH SHALL BE USED TO ENSURE THAT THE ALLOWABLE TENSION LIMIT IS NOT EXCEEDED. AN APPROVED LUBRICANT SHALL BE USED TO FACILITATE THE PULLING OF THE CABLE.
13. AS DIRECTED BY THE PROJECT ENGINEER, THE CONTRACTOR SHALL ADJUST CONDUIT VERTICALLY TO AVOID ANY POSSIBLE CONFLICTS WITH UNDERGROUND UTILITIES.
14. ALL PULL BOX COVERS SHALL BE FDOT APPROVED OF NON METALLIC CONSTRUCTION WITH RECESSED COVER LOGO "TRAFFIC SIGNAL" OR "FIBER OPTIC" AS APPROPRIATE.
15. THE LOCATION OF THE UTILITIES SHOWN IN THE PLANS ARE APPROXIMATE ONLY. THE EXACT LOCATION SHALL BE DETERMINED BY THE CONTRACTOR DURING CONSTRUCTION. IT IS THE RESPONSIBILITY OF THE CONTRACTOR TO HAVE EXACT LOCATIONS OF UNDERGROUND UTILITIES PRIOR TO DIGGING.
16. SIGNAL CABLE AND SPAN WIRE INSTALLATION SHALL BE A TWO POINT ATTACHMENT.
17. TYPE F LOOPS SHALL BE 6'x40' AND EXTEND 5' BEYOND THE STOP BAR.
18. FOR MULTIPLE RUNS OF UNDER PAVEMENT CONDUIT, ONLY ONE RUN WILL BE PAID FOR AS UNDER PAVEMENT AND ADDITIONAL RUNS WILL BE PAID FOR AS UNDERGROUND.
19. TRAFFIC SIGNAL MAINTAINING AGENCY IS LAKE COUNTY TRAFFIC DEPARTMENT LOCATED AT:  
123 N. SINCLAIR AVENUE  
TAVARES, FL. 32778  
PHONE (352) 253-4944
20. SIGNAL DISCONNECT SHALL BE 12"w x 6"h x 4 1/2"d, WITH HINGED DOOR AND 18 POSITION TERMINAL STRIP. NO CINCH JONES PLUGS WILL BE ACCEPTED.
21. THE CONTRACTOR SHALL VERIFY SIGNAL CABLE COLOR CODES WITH LAKE COUNTY BEFORE ORDERING.
22. THE CONTROLLER CABINET ASSEMBLY SHALL BE A NAZTEC TS 2, TYPE 2 AND HAVE ALL NECESSARY HARDWARE TO COMMUNICATE WITH LAKE COUNTY CLOSED LOOP SYSTEM AND SHALL USE THE APPROPRIATE COMMUNICATION PROTOCOL TO CONFORM TO THE RCSS REQUIREMENTS. THE CONTROLLER ASSEMBLY SHALL INCLUDE A GENERATOR TRANSFER SWITCH. THE ADDITIONAL EQUIPMENT AND ACCESSORIES FOR THE FIBER OPTIC CABLE INTERCONNECT SHALL BE FURNISHED AND INSTALLED AS PART OF THE CONTROLLER ASSEMBLY. GROUNDING FOR THE CONTROLLER ASSEMBLY SHALL MEASURE 25 OHMS OR LESS.
23. THE TRAFFIC SIGNAL SHALL FLASH NO LESS THAN 7 DAYS AND NO MORE THAN 14 DAYS PRIOR TO THE TURN-ON INSPECTION. THE CONTRACTOR SHALL CONTACT THE PERMIT ENGINEER 48 HOURS PRIOR TO TURNING THE SIGNAL ON FLASH.
24. SIGNAL CABLE AND LOOP WIRES TO BE IN SEPARATE PULL BOXES.
25. DELAY DETECTORS SHALL BE SET TO 5 SECONDS.
26. ANY NEW OR EXISTING STRIPING CUT BECAUSE OF LOOP PLACEMENT SHALL BE RESTRIPE PRIOR TO ACCEPTANCE.
27. PRE-EMPTION SYSTEM SHALL BE COMPATIBLE WITH MAINTAINING AGENCY'S EXISTING SYSTEM.
28. OVERHEAD BELDON TO BE UV RATED.
29. VEHICLE SIGNAL HEAD ASSEMBLIES SHALL BE BLACK, CAST ALUMINUM, WITH TUNNEL VISORS, AND LED'S FOR ALL INDICATIONS, UNLESS OTHERWISE NOTED.
30. A MANUAL PUSH BUTTON CORD SHALL BE FURNISHED IN ALL CONTROLLER CABINETS.
31. THE CONTRACTOR SHALL BE RESPONSIBLE FOR ACQUIRING ALL NECESSARY PERMITS, INCLUDING THE ELECTRIC PERMIT AND FOR COORDINATING APPLICATION FOR POWER.
32. INTERNALLY ILLUMINATED STREET NAME SIGNS SHALL HAVE A SEPARATE CIRCUIT BREAKER, PHOTOCELL, AND BYPASS SWITCH, INSIDE THE CABINET.
33. THE CONTRACTOR SHALL NOTIFY LAKE COUNTY TRAFFIC OPERATIONS (352) 742-1766 AT LEAST 24 HOURS IN ADVANCE OF INSTALLING SIGNAL POLES, GROUND RODS, UNDERGROUND CONDUIT, AND SEALING SIGNAL HEAD ASSEMBLIES SO THAT THESE OPERATIONS CAN BE OBSERVED.
34. A PRE-CONSTRUCTION MEETING SHALL BE SCHEDULED WITH LAKE COUNTY TRAFFIC OPERATIONS, (352) 742-1766, PRIOR TO ANY CONSTRUCTION.
35. THE CONTRACTOR SHALL BE RESPONSIBLE FOR CONTACTING THE POWER COMPANY PROVIDING THE ELECTRICAL POWER, TO DETERMINE IF ANY ADDITIONAL FEES ARE REQUIRED TO CONNECT POWER AND FOR CONNECTION OF POWER. IF REQUIRED THE FEE SHALL BE INCLUDED AS PART OF THE BID ITEM PAYMENT FOR ELECTRICAL SERVICE ASSEMBLY.
36. LOOP HOME RUNS SHALL NOT BE CUT INTO THE RADIUS.
37. A GENERATOR PAD, 3'x3'x4" CONCRETE WITH TWO EYEBOLTS SHALL BE INSTALLED. PAYMENT FOR THE CONCRETE PAD AND INSTALLATION SHALL BE INCLUDED UNDER PAY ITEM NUMBER 670-5-ABC.
38. THE FIRST BUFFER OF SINGLE MODE AND MULTI MODE FIBER SHALL BE TERMINATED IN THE CABINET USING ST CONNECTORS.
39. INTERNALLY ILLUMINATED STREET NAME SIGN SHALL BE INSTALLED 1' BELLOW THE MESSENGER CABLE WHERE POSSIBLE, POWERED BY A SEPARATE CIRCUIT BREAKER, AND SHALL BE DESIGNED AND INSTALLED IN ACCORDANCE WITH LAKE COUNTY PUBLIC WORKS INTERNALLY ILLUMINATED STREET NAME SIGN DETAIL.
40. AS PHOTOCELL SHALL BE INSTALLED INSIDE THE CABINET WITH A 2" PLEXIGLASS WINDOW, OR NEAR THE ELECTRIC SERVICE WITHIN REACH OF A LIFT TRUCK. CARE TO BE GIVEN TO INSTALL WHERE STREET LIGHTING DOES NOT AFFECT OPERATION.
41. THE CONTRACTOR SHALL FURNISH LAKE COUNTY TRAFFIC OPERATIONS WITH EMERGENCY CONTACTS AND PHONE NUMBERS AND HAVE AN IMSA LEVEL II CERTIFIED SIGNAL TECHNICIAN ON CALL WITHIN A TWO HOUR MINIMUM RESPONSE TIME.
42. THE CONTRACTOR SHALL FURNISH LAKE COUNTY TRAFFIC OPERATIONS TWO COMPLETE SETS OF AS-BUILT PLANS THAT INCLUDE CONDUIT AND PULL BOX LOCATIONS AT FINAL INSPECTION.
43. ANY LANDSCAPING DESTROYED BY THE CONTRACTOR DURING CONSTRUCTION SHALL BE RESTORED AT THE CONTRACTOR'S EXPENSE.

REVISIONS			ENGINEER OF RECORD		NAME		DATE		NAME		DATE		
DATE	BY	DESCRIPTION											
			 #62420 - #128/06 5/2/07	DESIGNED BY	AJD	09/06	DRAWN BY	AJD	09/06	CHECKED BY	KLL	09/06	SUPERVISED BY: KATHRYN L. LEE P.E. #62420



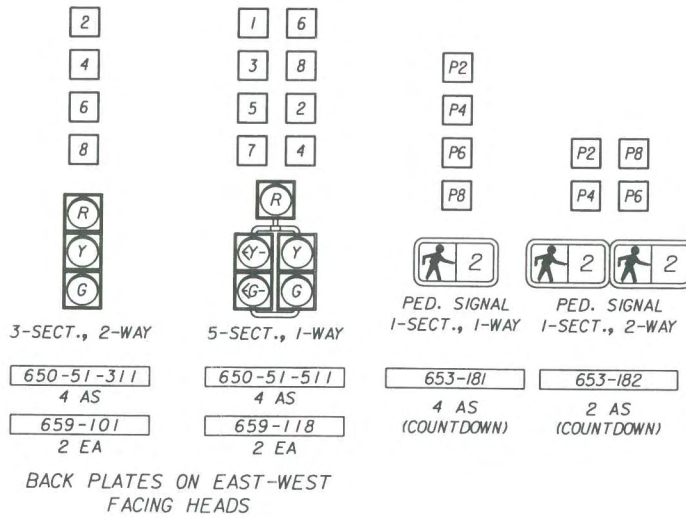
**GMB**  
ENGINEERS & PLANNERS, INC.

**GMB Engineers & Planners, Inc.**  
 3751 McGuire Boulevard, Suite 111  
 Orlando, FL 32803  
 Phone: 407-898-5424 Fax: 407-898-5425

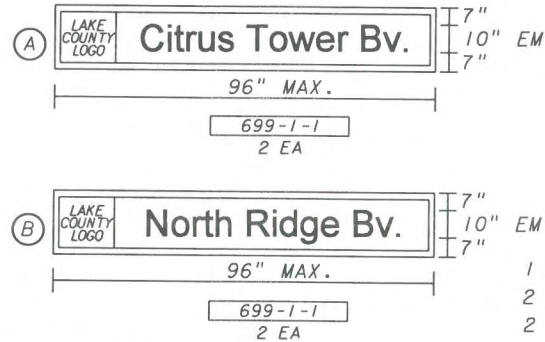
LAKE COUNTY

*Citrus Tower Blvd. at North Ridge Blvd.*  
**GENERAL NOTES**

SIGNAL HEAD DETAILS

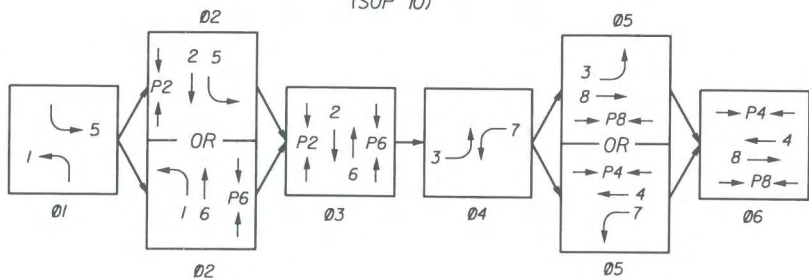


INTERNALLY ILLUMINATED OVERHEAD SIGNS (LED)



SIGN NOTES:  
1. SIGNS SHALL BE CANTILEVER MOUNTED.  
2. REFER TO THE LAKE COUNTY INTERNALLY ILLUMINATED STREET NAME SIGN SPECIFICATIONS FOR ADDITIONAL DETAILS.

MOVEMENT DIAGRAM (SOP 10)



CONTROLLER TIMINGS

TIMING FUNCTION	1	2	3	4	5	6	7	8
MINIMUM GREEN	5	13	5	5	5	13	5	5
EXTENSION	3.0	3.5	3.0	3.0	3.0	3.5	3.0	3.0
MAXIMUM GREEN 1	15	50	15	15	15	50	15	15
MAXIMUM GREEN 2	-	-	-	-	-	-	-	-
YELLOW CLEARANCE	4	4	4	4	4	4	4	4
ALL RED	1.0	1.0	1.0	1.0	1.0	1.0	1.0	1.0
PEDESTRIAN WALK	-	7	-	7	-	7	-	7
PED. CLEARANCE	-	21	-	21	-	21	-	21
RECALL	-	MIN	-	MIN	-	MIN	-	MIN

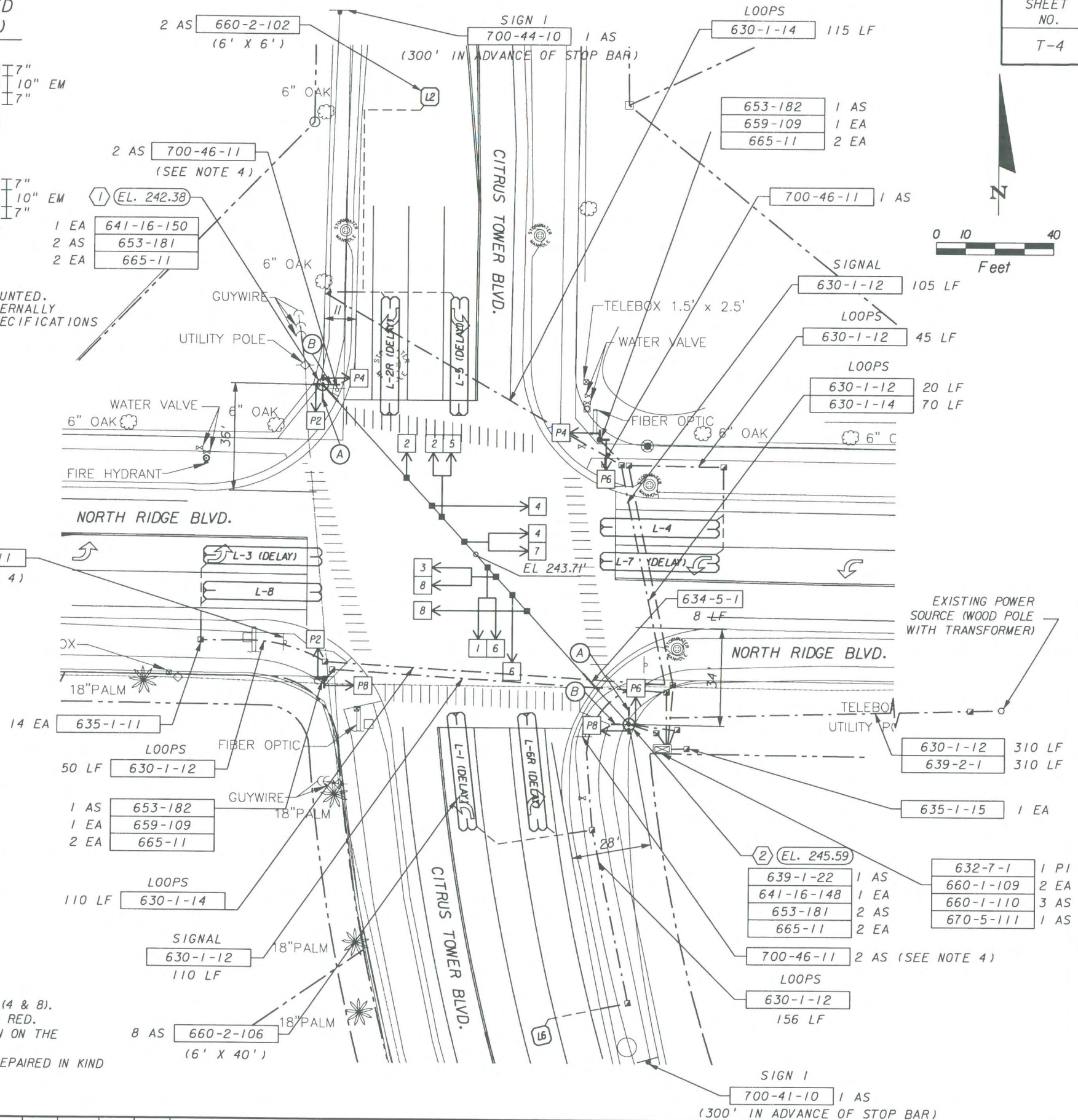
TIMINGS ARE INITIAL AND MAY REQUIRE FIELD ADJUSTING AS DIRECTED BY THE PROJECT ENGINEER.

NOTES:

- ADVANCE LOOP SPACING BASED ON A POSTED SPEED LIMIT OF 30 MPH.
- MAJOR STREET IS CITRUS TOWER BOULEVARD (2 & 6) AND MINOR STREET IS NORTH RIDGE BOULEVARD (4 & 8).
- DURING FLASH OPERATION, SIGNAL HEADS 2 AND 6 SHALL FLASH YELLOW AND ALL OTHERS SHALL FLASH RED.
- SIGN ASSEMBLY REMOVAL INCLUDES THE "STOP AHEAD" WARNING SIGNS IN ADVANCE OF THE INTERSECTION ON THE NORTH, SOUTH AND WEST APPROACHES.
- ANY DAMAGE TO THE SIDEWALK NECESSARY FOR THE INSTALLATION OF THE SIGNAL POLES SHALL BE REPAIRED IN KIND AND INCLUDED IN PAY ITEM 641-16-1XX.

DETECTORS FOR LOOPS

NO. OF LOOPS	NO. OF LOOPS	NO. OF NEW DETS.	DELAY TIME (SECS.)
L-1, L-5	2	1	10
L-3, L-7	2	1	10
L-2R, L-6R	2	1	10
L-2, L-6	2	1	-
L-4, L-8	2	1	-



REVISIONS

DATE	BY	DESCRIPTION

ENGINEER OF RECORD

*Kathryn L. Lee*  
#62420 - 11/28/06 5/2/07

DESIGNED BY	DATE	DRAWN BY	DATE
AJD	09/06	AJD	09/06
KLL	09/06	KLL	09/06

SUPERVISED BY: KATHRYN L. LEE P.E. #62420



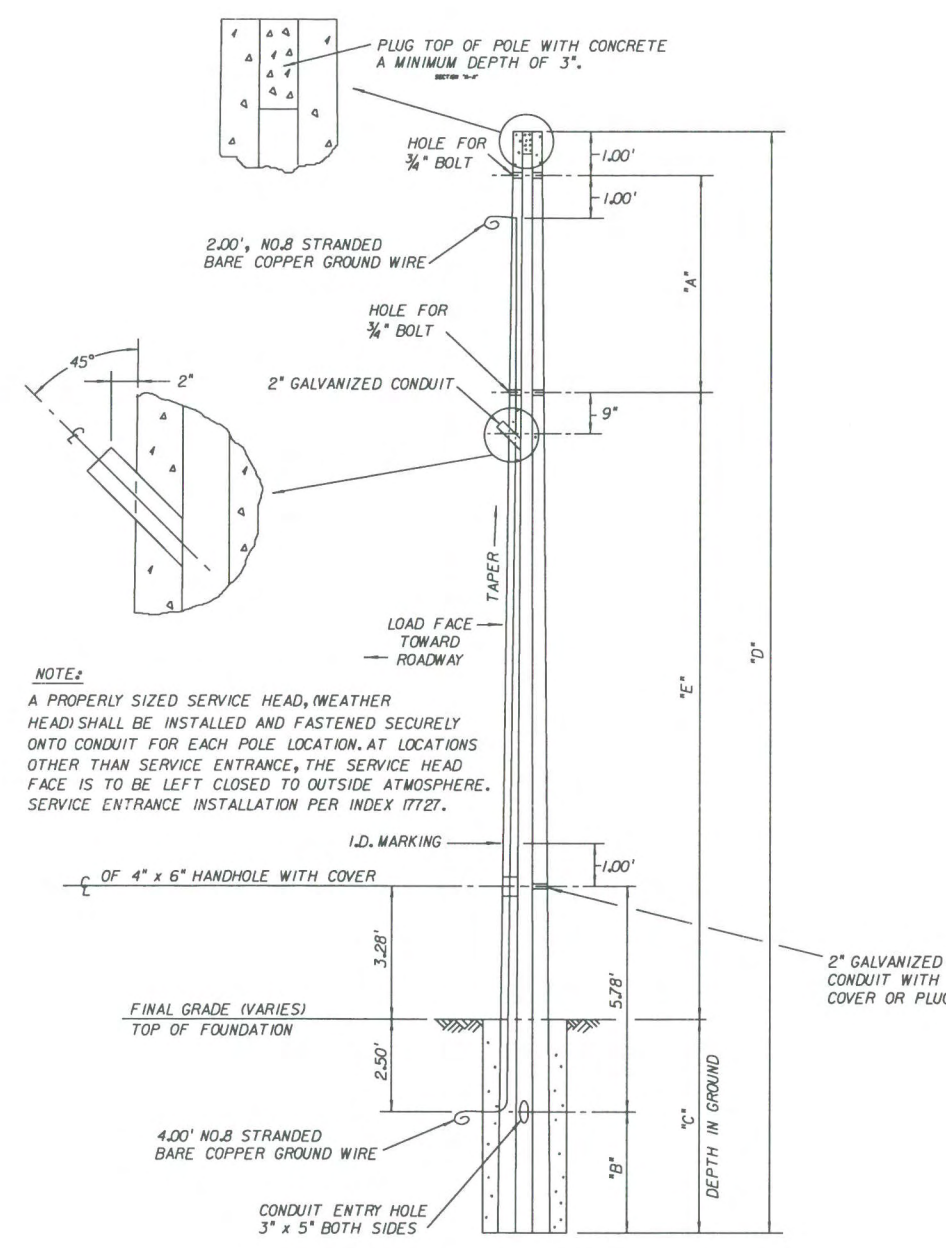
GMB Engineers & Planners, Inc.  
3751 Maguire Boulevard, Suite 111  
Orlando, FL 32803  
Phone: 407-898-5424 Fax: 407-898-5425

LAKE COUNTY

Citrus Tower Blvd. at North Ridge Blvd.  
SIGNALIZATION PLAN

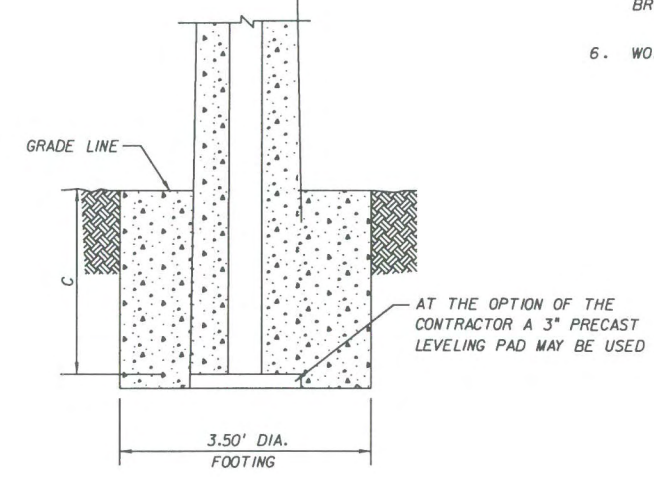
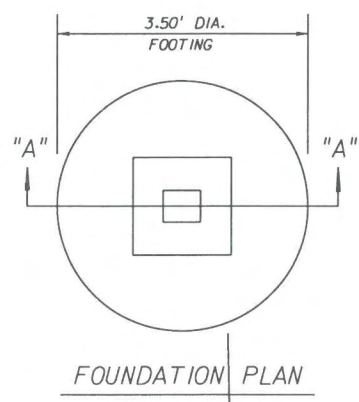
POLE SCHEDULE

LOCATION	POLE NO.	TYPE	A (ft)	B (ft)	C (ft)	D (ft)	E (ft)	ITEM NO.	QUANTITY
SEE T-4	1	N-VII	10.30'	8.12'	10.62'	46'	24.08'	641-16-146	1
SEE T-4	2	N-VII	10.30'	7.45'	9.95'	42'	20.75'	641-16-142'	1



**NOTE:**  
A PROPERLY SIZED SERVICE HEAD, (WEATHER HEAD) SHALL BE INSTALLED AND FASTENED SECURELY ONTO CONDUIT FOR EACH POLE LOCATION. AT LOCATIONS OTHER THAN SERVICE ENTRANCE, THE SERVICE HEAD FACE IS TO BE LEFT CLOSED TO OUTSIDE ATMOSPHERE. SERVICE ENTRANCE INSTALLATION PER INDEX 17727.

**POLE SECTION**  
TYPES N-III through N-VIII

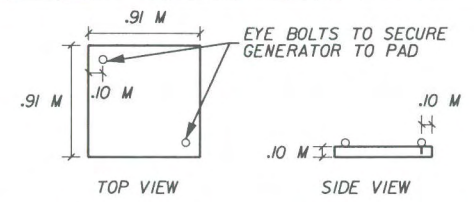


FOOTING TO BE PAID FOR UNDER PAY ITEM 641-X-XXX REFER TO FDOT STANDARD SPECIFICATIONS SECTION 641-3.2.

**SPECIAL NOTES:**

- CATENARY WIRE SHALL BE 3/8" DIAMETER (UTILITY GRADE), AND THE MESSENGER WIRE SHALL BE 1/2" DIAMETER (UTILITY GRADE).
- THE CONTRACTOR SHALL SUBMIT SHOP DRAWINGS AND CAPACITY CALCULATIONS FOR THE PROPOSED POLES, SIGNED AND SEALED BY A PROFESSIONAL ENGINEER REGISTERED IN THE STATE OF FLORIDA, TO THE ENGINEER FOR REVIEW AND APPROVAL.
- A MINIMUM CLEARANCE OF 3" BETWEEN THE EXTERIOR OF THE PRECAST POLE AND THE SIDES OF THE FOUNDATION SHALL BE MAINTAINED. IF THE FURNISHED POLE RESULTS IN A MINIMUM CLEARANCE OF LESS THAN 3", THEN THE CONTRACTOR SHALL INCREASE THE FOUNDATION DIAMETER ("F") TO OBTAIN THE 3" MINIMUM CLEARANCE AT NO ADDITIONAL COST TO THE OWNER.
- ASSUMPTIONS AND VALUES USED IN DESIGN OF FOUNDATION  
EFFECTIVE SOIL UNIT WEIGHT: 50 PCF  
ANGLE OF INTERNAL FRICTION: 30°
- ALL CONSTRUCTION WORK AND MATERIALS SHALL CONFORM TO THE LATEST EDITION OF FDOT STANDARD SPECIFICATIONS FOR ROAD AND BRIDGE CONSTRUCTION SECTION 641.
- WORK THIS DRAWING WITH ROADWAY AND TRAFFIC DESIGN STANDARDS AND THE REST OF THE DRAWINGS FOR THIS PROJECT.

**CONCRETE GENERATOR PAD DETAIL**



NOTE: THE GENERATOR PAD SHALL BE LOCATED OFF OF THE SIDEWALK.

REVISIONS			ENGINEER OF RECORD		DESIGNED BY		DRAWN BY		GMB Engineers & Planners, Inc.		LAKE COUNTY	Citrus Tower Blvd. at North Ridge Blvd. STRAIN POLE DETAILS
DATE	BY	DESCRIPTION	NAME	DATE	NAME	DATE	NAME	DATE	3751 Maguire Boulevard, Suite 111 Orlando, FL 32803 Phone: 407-898-5424 Fax: 407-898-5425			
			Kathryn L. Lee	05/21/07	AJD	09/06	AJD	09/06				
			#62420 - 11/28/06	5/2/07	KLL	09/06	KLL	09/06				
			SUPERVISED BY: KATHRYN L. LEE P.E. #62420									

