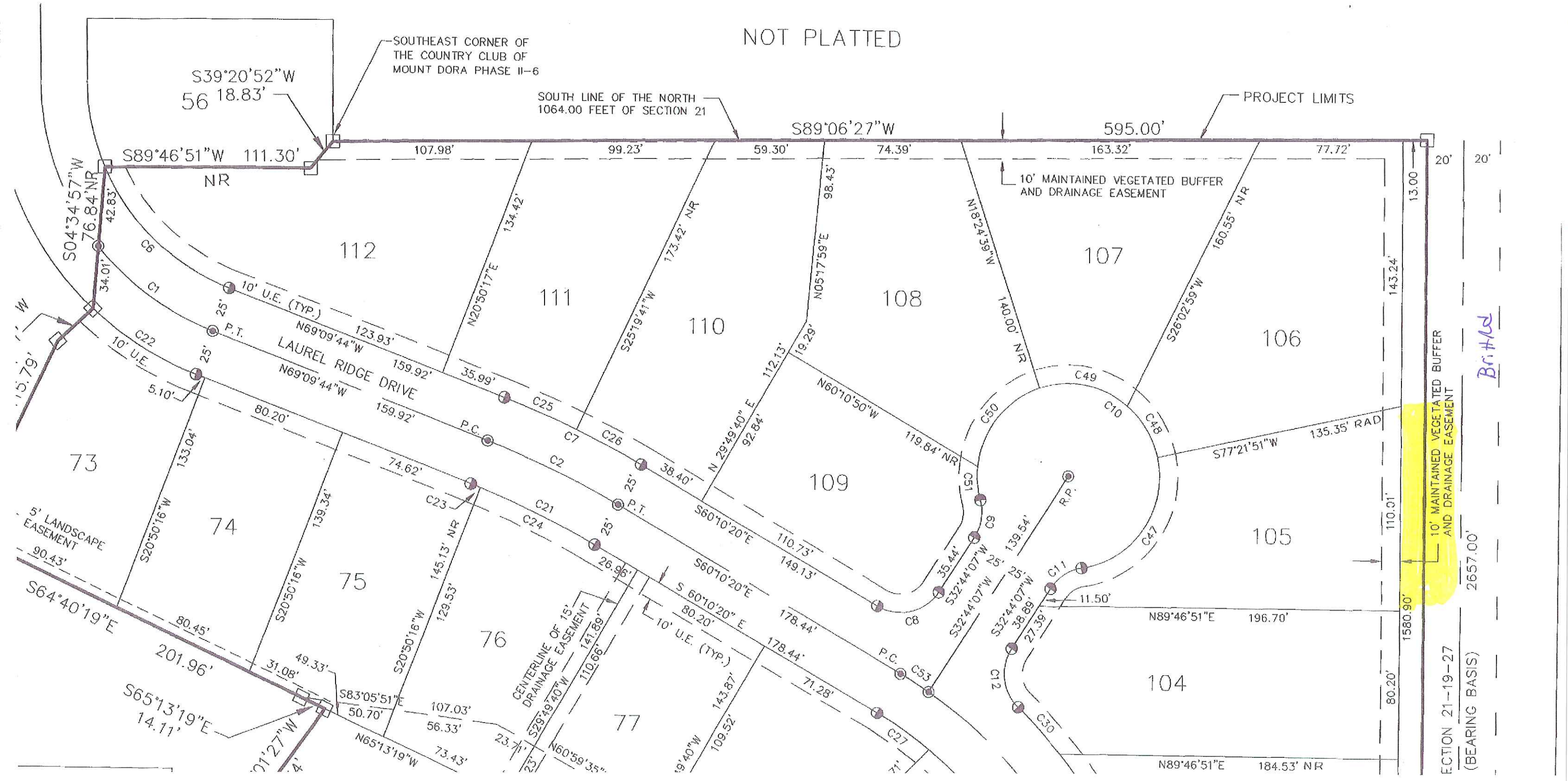


Copyright 2011 Lake County Board of County Commissioners

OF MOUNT DORA PHASE II-12

ON 21, TOWNSHIP 19 SOUTH, RANGE 27 EAST,
MOUNT DORA, LAKE COUNTY, FLORIDA

SHEET NO. 2 OF 3



Britt

SECTION 21-19-27
(BEARING BASIS)

COUNTRY CLUB
OF MOUNT DORA
PHASE II-12
PLAT BOOK 42 PAGES 73-75

104
BABIAR, JAMES J.
& CAROL S.
OFFICIAL RECORDS
BOOK 2013
PAGE 0974
PARCEL NUMBER
21-19-27-
158000010400

105
CRAWFORD, JAY B.
& KAREN G.
OFFICIAL RECORDS
BOOK 1879 PAGE 2008
PARCEL NUMBER
21-19-27-158000010500

106
VAN TILBURG, ROBERT E.
& CHERYL W.
OFFICIAL RECORDS
BOOK 2598 PAGE 0742
PARCEL NUMBER
21-19-27-158000010600

