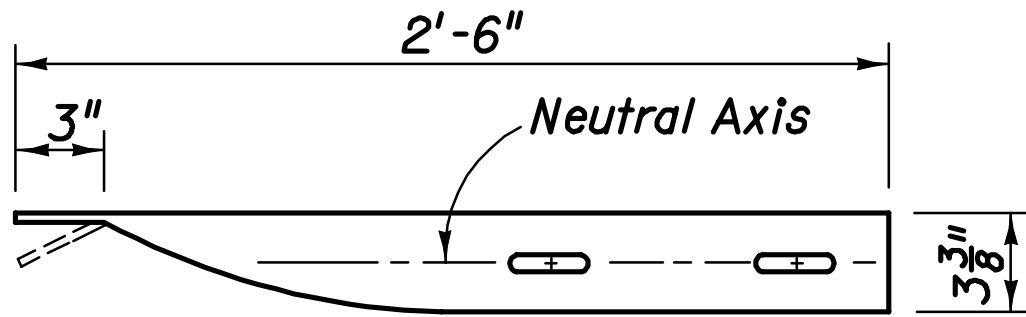
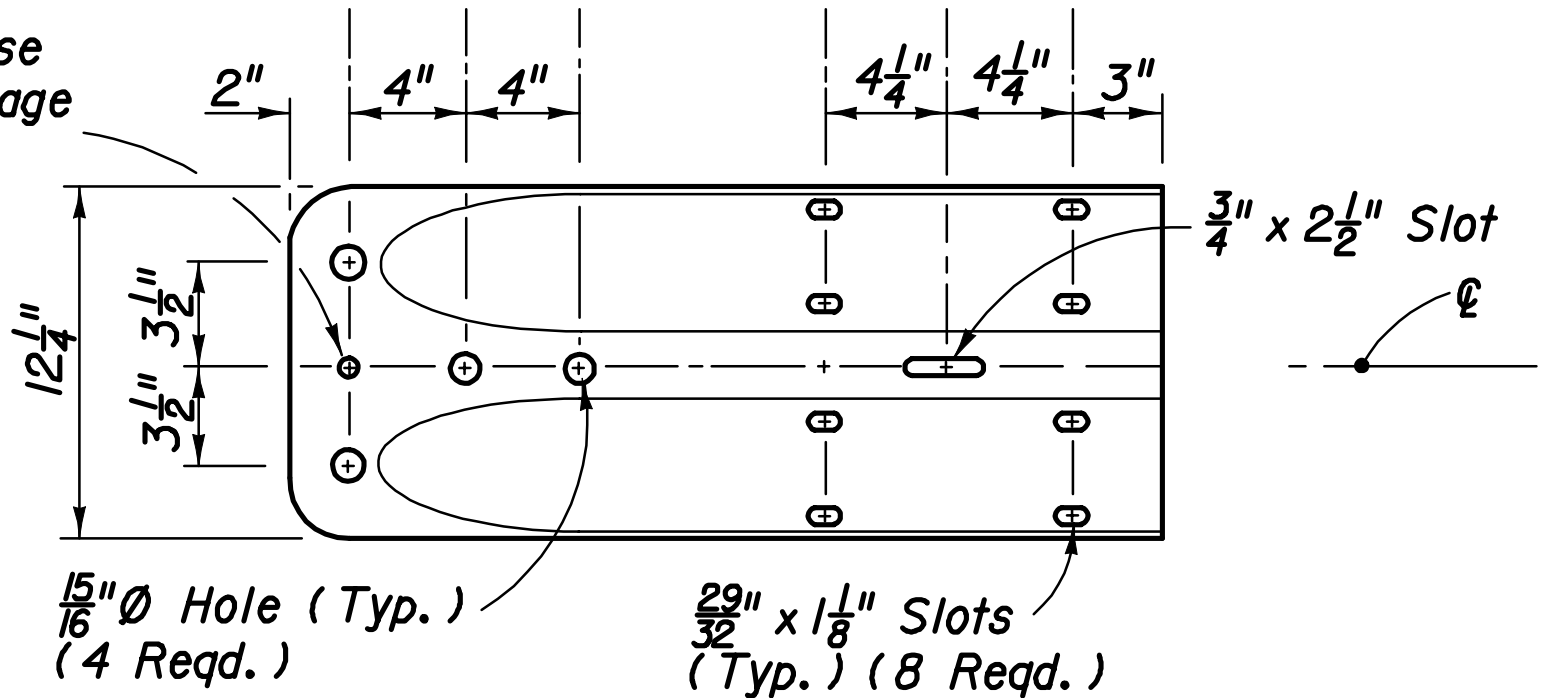


$25\frac{1}{2}^\circ \pm$ For End Anchorage Type MELT and CRT. Field Bend With Metalizing Permitted



$\frac{3}{4}'' \text{ } \emptyset$ Hole For Use With End Anchorage Type MELT



Approach Beam, End Section Or End Shoe

$\frac{15}{16}'' \text{ } \emptyset$ Hole (Typ.) (4 Reqd.)

$\frac{29}{32}'' \times \frac{1}{8}''$ Slots (Typ.) (8 Reqd.)

Note: $\frac{5}{8}'' \text{ } \emptyset$ Steel washer required with splice bolts

SPECIAL END SHOE