

Lake County Professional Engineering Design Services for Wekiva Trail, Segment 1 | RFQ #22-902

SUCCESS FOR LAKE COUNTY

The Lake County Wekiva Trail design will require implementable, action-based strategies and recommendations that tie together a variety of issues in a long-term manner. The success of the trail will be aligned and informed by the recurring and resounding themes voiced by an engaged citizenry, representing all segments of the community. The trail will be highly accessible to the public in terms of understanding and usability (interactive and web-based options).

YOUR TEAM



Duane Booth, PE
Principal-in-Charge
Halff Associates, Inc.



Brad Bublitz, EI
Project Manager
Halff Associates, Inc.



Raymond Jones, PE
Geotechnical/Contamination
Andreyev Engineering, Inc.



Ralph Verrastro, PE
Bridges
Bridging Solutions
(a KCI company)



Frank Bellomo, ASLA, PLA
Public Involvement/
Historical Coordination
GAI Consultants, Inc.



ADDITIONAL LOCAL STAFF
Available to Support Team

IMMEDIATE AVAILABILITY

Team members were carefully selected not only for their expertise, but also for their availability to work on the project for its duration. We follow well-established and time-proven procedures to manage our project work and have a strong team that is available to begin work immediately upon notice-to-proceed.

EXAMPLES OF WORK SIMILAR IN SCOPE



Marjorie Harris Carr Cross Florida Greenway Landbridge Phase Paved Recreational Trail



St. Marks Trail Connection

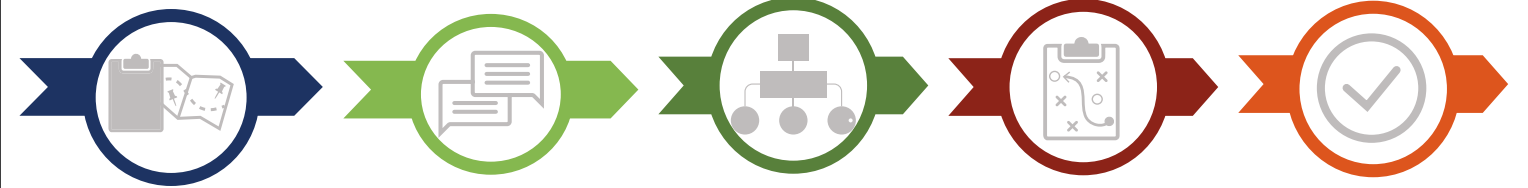


Triple Creek Community



Waterman Village Golf Cart Bridge

APPROACH/PROCESS



1 | Project Initiation

- Project Scoping
- Fee Negotiations
- Contract Approval

2 | Project Commencement

- Project Kick-off
- Establish Design Aesthetics Committee (DAC)
- Obtain Right of Way Package from Lake County
- Field Survey
- Historic Artifact Inventory
- City of Mount Dora Kick-off Meeting
- Public Website Startup & Initial Public Notification
- Mount Dora Historical Preservation Board Engagement
- Environmental Assessment
- Geotechnical Investigation
- Contamination Assessment

3 | Community Assessment

- Community Meetings for Bridge Designs & Acceptance
- Historical Features Coordination
- Coordination with City of Mount Dora on Utilities
- Public Information Meetings
- Project Website Updates

4 | Project Design

- Trail Design
- Bridge Design
- Coordination with DAC & Project Shareholders Meetings
- Prepare Submittal Documents
- Project Website Updates
- Coordination with FDOT
- Prepare Project Engineer's Estimate Cost to Construct
- Prepare Local Agency Program (LAP) & Technical Specifications

5 | Project Acceptance

- Finalize Historical Artifact Documentation
- Obtain Project Contract Document Approvals from FDOT & Lake County
- Prepare Project Bid Documents
- Prepare Project Close-out Documents
- Finalize Project Website
- Present Final Plans

SCOPE OF WORK

- Design approximately 5.5 miles of 14-foot wide asphalt trail from just west of Tremain Street (Mount Dora) to SR 46 (Sorrento) that adheres to FDOT Design Manual Section 224 and all FDOT LAP policies and procedures.
- Survey trail corridor, including topographic, of all existing features within the railroad right of way.
- Reverse survey to establish the railroad right of way using title searches and local knowledge of the corridor.
- Inventory all railroad and other historic artifacts that are within the trail corridor.
- Perform geotechnical and environmental explorations for project design and investigate any contamination or hazardous material within project corridor.
- Coordinate and establish a project DAC for meeting all historical preservation requirements. Include members from Lake County, City of Mount Dora, and Mount Dora Historical Preservation Board.
- Coordinate all Public Involvement Meetings.
- Investigate, coordinate with DAC, and design two bridges, Tremain Street and US 441. Historical preservation of bridges will be of utmost importance.
- Provide a trail that is ADA compliant and is safely designed for 11 road crossings. Advance Warning signage and pavement markings, including Rectangular Rapid Flashing Beacons to be utilized.

WHY HALFF?



DEMONSTRATED EXPERIENCE

- 25+ years of experience (10+ as a team) working for Lake County & the City of Mount Dora
- Proven FDOT LAP success on multiple Lake County projects



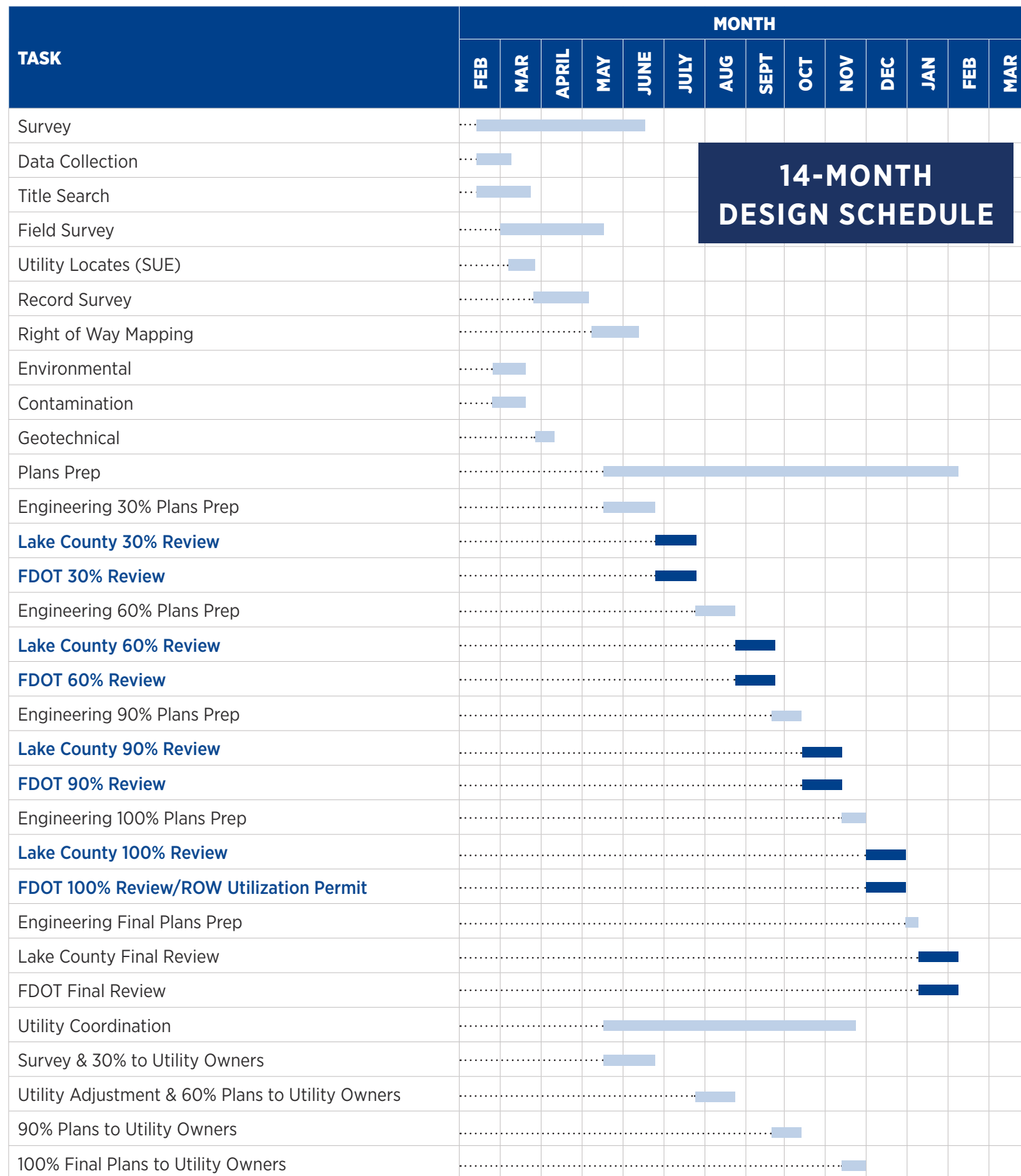
LOCAL KNOWLEDGE

- Local knowledge & history of providing survey in corridor
- Strong understanding of railroad right of way issues



STRONG COMMITMENT

- Established relationships with project shareholders through past scoping of the project
- Vested interest in seeing the success of this project
- Immediately available to provide practical and efficient solutions to start the project



**14-MONTH
DESIGN SCHEDULE**

*Public Meeting and Committee Meetings are included within engineering timelines and agency reviews

PROJECT UNDERSTANDING

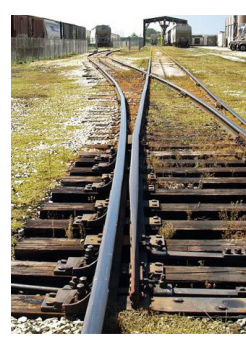
Mile Markers



Top: Existing railroad marker along trail corridor
Bottom: Restored marker examples

Vintage lot of 18 railroad mile marker signs

Switching Equipment



Top Left: Existing railroad switch along trail corridor
Top Right: Semi-restored switch
Bottom: Existing railroad spurs along corridor

Rail



Photo Above: Rail historic preservation option (Design will ensure no tripping hazards exist)



**BRIDGING
SOLUTIONS**
A KCI COMPANY



Historical Bridge Experience

