



COMPREHENSIVE PLAN AMENDMENT  
STAFF REPORT  
OFFICE OF PLANNING & ZONING

---

Tab Number: 4

Public Hearings: Planning & Zoning Board (PZB): February 5, 2025  
Board of County Commissioners (BCC) (Transmittal): March 4, 2025  
Board of County Commissioners (BCC) (Adoption): TBD

Case No. and Project Name: PZ2025-01 2040 Water Supply Facilities Work Plan  
Appendix A, Public Facilities Element Comprehensive Plan Amendment

Applicant: Lake County Board of County Commissioners

Requested Action: Amend the Comprehensive Plan to Establish the Water Supply Facilities Work Plan as Appendix “A” within the Public Facilities Element; Revise such provision to be consistent with Section 163.3177, Florida Statutes, and Chapter 373, Florida Statutes; and amend associated regional water supply Comprehensive Plan policies.

Case Managers: Janie Barrón, Planning Manager, Office of Planning and Zoning

Staff Determination: Staff finds the establishment of the Water Supply Facilities Work Plan; establishing the Water Supply Facilities Work Plan as Appendix “A” within the Public Facilities Element; and amendment of the associated regional water supply Comprehensive Plan policies consistent with the purpose and intent of the Comprehensive Plan, as well as Section 163.3177, Florida Statutes, and Chapter 373, Florida Statutes.

PZB Recommendation:

**Staff Analysis**

Senate Bills 360 and 444, enacted by the State Legislature in 2005, established requirements for water supply planning and created statutory links between the regional water supply plans (RWSPs) prepared by the water management districts and a local government’s adopted comprehensive plan. These changes were specifically incorporated into Section 163.3177, Florida Statutes, and Chapter 373, Florida Statutes.

This legislation requires local governments within a regional water supply planning area to develop and adopt a Water Supply Facilities Work Plan (Work Plan) as part of their comprehensive plan, which covers a 10-year planning horizon. The Work Plan is intended to ensure that local governments can provide adequate potable water to meet the needs of current and projected populations during the planning period. The Work Plan must be updated, at a minimum, every five years within 18-months after the governing board of a Water Management District approves an updated RWSP. Policy VI-1.3.2 contains enabling language to ensure such required updates are completed.

Lake County is not a water provider and does not own, operate, or maintain any potable water systems. Lake County has no financial responsibility related to any of its water suppliers' facilities. All potable water systems within the County are owned, maintained and operated by municipalities or private entities. In rural portions of the County, individual water wells, known as domestic self-supply (DSS), provide potable water to residences. Agricultural or industrial users in the County not served by a municipal or private supplier are served by private wells permitted by the applicable water management district. While the County is not a provider of potable water, it does recognize the importance of water supply planning in providing for the residents and businesses in Lake County.

The purpose of the **Public Facilities Element** is to ensure that public facilities are available to meet the needs of Lake County. The Public Facilities Element is broken down into six sub-elements: Aquifer Recharge, Potable Water, Sanitary Sewer, Solid Waste and Public-School Facilities. These elements establish the framework for the provision of public facilities in the County to meet the demand created by existing and future developments.

Coordination of the local comprehensive plan with the comprehensive plans of adjacent municipalities, and with the appropriate water management district's regional water supply plans approved pursuant to Section 373.709, Florida Statutes, and with adopted rules pertaining to designated areas of critical state concern shall be a major objective of the local comprehensive planning process. To that end, in the preparation of a comprehensive plan or element thereof, and in the comprehensive plan or element as adopted, the governing body shall include a specific policy statement indicating the relationship of the proposed development of the area to the comprehensive plans of adjacent municipalities, adjacent counties, or the region, as the case may require and as such adopted plans or plans in preparation may exist.

The proposal request is an amendment to the Lake County 2030 Comprehensive Plan Public Facilities Element pursuant to the 10-Year Water Supply Facilities Work Plan and Regional Water Supply Planning Initiatives. The ordinance proposes to create the 10-Year Water Supply Facilities Work Plan as Appendix "A" within the Public Facilities Element, attached hereto by reference as **Attachment "A"**; proposes to revise such provision to be consistent with Section 163.3177, Florida Statutes, and Chapter 373, Florida Statutes; and proposes an amendment to the associated regional water supply Comprehensive Plan policies.

The proposal to revise the associated regional water supply Comprehensive Plan policies to:

- Clarify the intent of the policies;
- Clarify the district agency's regional plan initiative;
- Clarify that Lake County shall not only pursue but maintain interlocal agreements with the municipalities providing water and wastewater utility services within unincorporated areas of Lake County; and
- Remove the references to District Water Supply Facilities Work Plan as the proposal is for purposes of a Regional Water Supply Planning Initiatives.

### **Standards for Review (LDR Section 14.03.03)**

#### **A. Whether the proposed amendment is consistent with all elements of the Comprehensive Plan.**

The intent of this amendment is the ongoing commitment to safeguarding the health and sustainability of Lake County's community water resources to ensure the quality and quantity of water and wellheads that supply water for a Public Water System by implementing water source protection and water conservation best management practices (BMPs). BMPs are designed to minimize water waste, improve efficiency in water use, and reduce the environmental impacts of water consumption. By adopting these practices, Lake County residents and businesses contribute to preserving vital water supplies, ensuring that water remains available for future generations.

The primary purpose of water source protection and water conservation BMPs is to mitigate the impact of human activities—such as agriculture, industrial processes, urban development, and wastewater management—on water systems. These practices are designed to minimize pollution, control runoff, reduce soil erosion, and protect sensitive ecosystems that support water resources. Additionally, the implementation of BMPs supports broader environmental goals, including the protection of natural ecosystems, the mitigation of drought-related risks, and compliance with local, state, or federal water use regulations. Water conservation is essential in addressing the challenges posed by climate change, population growth, and water scarcity, ultimately fostering long-term water security for all stakeholders.

The amendment complies with legislation that requires local governments within a regional water supply planning area to develop and adopt a Water Supply Facilities Work Plan as part of their comprehensive plan, which covers a 10-year planning horizon. While Lake County is not a water provider and does not own, operate, or maintain any potable water systems, Lake County recognizes the importance of water supply planning in providing for the residents and businesses located within the County.

The proposed amendment is consistent with all elements of the Comprehensive Plan, complies with Senate Bills 360 and 444, and complies with Section 163.3177, Florida Statutes, and Chapter 373, Florida Statutes.

The **Future Land Use Element** seeks to ensure compatibility between densities and intensities of development, providing for land use transitions as appropriate to protect the long-term integrity of both urban and rural areas; promote the conservation and preservation of Lake County's natural and cultural resources; and direct compact development to established urban areas to prevent sprawl.

The **Capital Improvements Element** seeks to maintain adopted level of service standards and ensure public facilities and services are available concurrent with development. The proposed amendment is not in conflict with the Capital Improvements Element.

The **Conservation Element** is intended to provide a framework for the ongoing monitoring, management, and use of the County's natural resources. The proposed amendment is not in conflict with the Conservation Element and will enhance this element by requiring properties that are proposed for development in applicable Future Land Use Categories to further preserve the natural resources by requiring the clustering of, and preservation of open space on potential residential development sites within applicable Future Land Use Categories in unincorporated Lake County.

The **Economic Element** seeks to strengthen the County's position as a business center for Central Florida by aggressively pursuing opportunities and building collaborative relations with regional allies. The proposed amendment is not in conflict with the Economic Element.

The purpose of the **Housing Element** is to guide Lake County in developing appropriate goals, objectives and policies that demonstrate the County's commitment to meet the identified needs of all its residents. The proposed amendment is not in conflict with the Housing Element.

The **Intergovernmental Coordination Element** strives to promote coordination between Lake County and other local, state, regional, and federal government entities. The proposed amendment is not in conflict with the Intergovernmental Coordination Element.

The goal of the **Parks and Recreation Element** is to facilitate the development and management of parks and facilities for a recreation system that includes environmental lands, trails, and other recreational opportunities that meet the diverse needs of a growing community. The proposed amendment has no impact to existing levels of service and is not in conflict with the Parks and Recreation Element.

The goal of the **Transportation Element** is to prepare a plan that emphasizes more efficient use of the existing transportation system and contributes to the wider national objectives of energy conservation, improved air quality, and increased social and environmental amenity. The proposed amendment is not in conflict with the Transportation Element.

The purpose of the **Public Facilities Element** is to ensure that public facilities are available to meet the needs of Lake County residents; public facilities in this element refers to aquifer recharge, potable water, sanitary sewer, solid waste, stormwater, and public-school facilities. The proposed amendment will have no impact on public facilities and is not in conflict with the Public Facilities Element.

**B. Whether the proposed amendment is in conflict with any applicable provisions of these regulations.**

If adopted, the proposed amendment is not in conflict with any applicable provisions of the Comprehensive Plan.

**C. Whether, and the extent to which, the proposed amendment is inconsistent with existing and proposed land uses.**

The proposed amendment is not in conflict with existing or proposed land uses. The amendment proposes adequate water supply planning fostering long-term water security for all stakeholders.

**D. Whether there have been changed conditions that justify an amendment.**

The proposal request is an amendment to the Lake County 2030 Comprehensive Plan Public Facilities Element pursuant to the 10-Year Water Supply Facilities Work Plan and Regional Water Supply Planning Initiatives. The ordinance proposes to create the 10-Year Water Supply Facilities Work Plan as Appendix "A" with the Public Facilities Element, attached hereto by reference as **Attachment "A"**; proposes to revise such provision to be consistent with Section 163.3177, Florida Statutes, and Chapter 373, Florida Statutes; and proposes an amendment to the associated regional water supply Comprehensive Plan policies.

The proposal to revise the associated regional water supply Comprehensive Plan policies to clarify the intent of the policies; clarify the district agency's regional plan initiative; clarify that Lake County shall not only pursue but maintain interlocal agreements with the municipalities providing water and wastewater utility services within unincorporated areas of Lake County; and remove the references to District Water Supply Plan as the proposal is for purposes of a Regional Water Supply Planning Initiatives.

- E. Whether, and the extent to which, the proposed amendment would result in demands on public facilities, and whether, or to the extent to which, the proposed amendment would exceed the capacity of such public facilities, infrastructure and services, including, but not limited to police, roads, sewage facilities, water supply, drainage, solid waste, parks and recreation, schools, and fire and emergency medical facilities.**

The proposed amendment would have no impact to public facilities. The proposed amendment seeks to safeguarding the health and sustainability of Lake County's community water resources to ensure the quality and quantity of water and wellheads that supply water for a Public Water System by implementing water source protection and water conservation best management practices.

- F. Whether, and the extent to which, the proposed amendment would result in significant impacts on the natural environment.**

By adopting these practices, Lake County residents and businesses contribute to preserving vital water supplies, ensuring that water remains available for future generations and the outcome of this amendment would result in adequate water supply planning fostering long-term water security for all stakeholders.

- G. Whether, and the extent to which, the proposed amendment would affect the property values in the area.**

There is no indication that the amendment would have an adverse impact on property values.

- H. Whether, and the extent to which, the proposed amendment would result in an orderly and logical development pattern, specifically identifying any negative effects on such pattern.**

The proposal seeks the amendment to the Lake County 2030 Comprehensive Plan Public Facilities Element pursuant to the 10-Year Water Supply Facilities Work Plan and Regional Water Supply Planning Initiatives. The ordinance proposes to create the 10-Year Water Supply Facilities Work Plan as Appendix "A" with the Public Facilities Element, attached hereto by reference as **Attachment "A"**; proposes to revise such provision to be consistent with Section 163.3177, Florida Statutes, and Chapter 373, Florida Statutes; and proposes an amendment to the associated regional water supply Comprehensive Plan policies.

As previously stated, by adopting these practices, Lake County residents and businesses contribute to preserving vital water supplies, ensuring that water remains available for future generations and the outcome of this amendment would result in adequate water supply planning fostering long-term water security for all stakeholders.

- I. Whether the proposed amendment would be consistent with or advance the public interest, and in harmony with the purpose and interest of these regulations.**

The proposed amendment will be consistent with the purpose and interest of Lake County's regulations.

# Attachment "A"



**LAKE COUNTY**  
**Public Facilities Element Appendix "A"**  
**2040 Water Supply Facilities Work Plan**  
**2030 Comprehensive Plan**

**Effective XXXXXXXX XX, 2025**



## **LAKE COUNTY**

# **Public Facilities Element Appendix “A” 2040 Water Supply Facilities Work Plan 2030 Comprehensive Plan**

**Effective XXXXXXXX XX, 2025**

Prepared by:  
Office of Planning and Zoning  
315 West Main Street  
Tavares, FL 32778

# **LAKE COUNTY BOARD OF COUNTY COMMISSIONERS**

Commissioner Anthony Sabatini, District 1  
Commissioner Sean Parks, AICP, QEP, District 2  
Commissioner Kirby Smith, District 3  
Commissioner Leslie Campione, District 4  
Commissioner Timothy Morris, District 5

## **COUNTY MANAGER**

Jennifer Barker

## **COUNTY ATTORNEY**

Melanie Marsh

## **DIRECTOR OFFICE OF PLANNING AND ZONING**

Mike J. Fitzgerald, AICP

Produced by the: Lake County Office of Planning and Zoning  
315 West Main Street  
P.O. Box 7800  
Tavares, FL 32778-7800  
352-343-9641

Contributors: Janie Barrón, Lake County Office of Planning and Zoning  
David Langley, Lake County Office of County Attorney's  
Steven Fitzgibbons, AICP, St. Johns River Water Management District



**TABLE OF CONTENTS**  
**LAKE COUNTY WATER SUPPLY FACILITIES WORK PLAN**

**CHAPTER 1: OVERVIEW OF WATER SUPPLY PLANNING IN LAKE COUNTY .....4**

**1.1 INTRODUCTION .....4**

**1.2 LAKE COUNTY LOCATION AND CONTEXT .....4**

**1.2.1. WATER MANAGEMENT DISTRICTS .....4**

**1.2.2. REGIONAL WATER SUPPLY PLANNING AREAS.....4**

**1.2.3. WATER SOURCES AND SUPPLIERS .....6**

**1.2.3.1 WATER SOURCE PROTECTION BEST MANAGEMENT PRACTICES .....6**

**1.3 INTERGOVERNMENTAL COORDINATION .....7**

**1.3.1 INTERGOVERNMENTAL COORDINATION WITH PUBLIC WATER SUPPLIERS .....7**

**1.4 MANDATORY CONNECTION REQUIREMENT .....8**

**1.5 CONSERVATION PRACTICES .....8**

**1.5.1 WATER CONSERVATION BEST MANAGEMENT PRACTICES.....8**

**CHAPTER 2: WATER SUPPLY DEMAND .....10**

**2.1 POPULATION AND WATER DEMAND PROJECTIONS .....11**

**2.2 GROUND WATER AND SURFACE WATER .....12**

**2.3 REUSE .....12**

**2.3.1 REUSE PRACTICES.....12**

**2.4 ALTERNATIVE WATER SUPPLY (AWS).....15**

**CHAPTER 3: WATER SUPPLY SOURCES .....16**

**3.1 MUNICIPAL WATER SUPPLIERS .....16**

**3.1.1 LEVEL OF SERVICE STANDARD .....20**

**3.2 PRIVATE WATER SUPPLIERS.....21**

**3.3 DOMESTIC SELF-SUPPLY (DSS) AND SMALL PUBLIC WATER SUPPLY (SPWS) SYSTEMS .....23**

**APPENDIX A: EXPANDED DATA .....25**

    Notes: Water Use and Demand Projections shown in million gallons per day (mgd). .....27

## CHAPTER 1: OVERVIEW OF WATER SUPPLY PLANNING IN LAKE COUNTY

### 1.1 INTRODUCTION

Senate Bills 360 and 444, enacted by the State Legislature in 2005, established requirements for water supply planning and created statutory links between the regional water supply plans (RWSPs) prepared by the water management district agencies and a local government's adopted comprehensive plan; these changes were specifically incorporated into Section 163.3177, Florida Statutes, and Chapter 373, Florida Statutes.

This legislation requires local governments within a regional water supply planning area to develop and adopt a Water Supply Facilities Work Plan (Work Plan) as part of their comprehensive plan which covers a 10-year planning horizon. The Work Plan is intended to ensure that local governments can provide adequate potable water to meet the needs of current and projected populations during the planning period. The Work Plan must be updated, at a minimum, every five years within 18-months after the governing board of a Water Management District approves an updated RWSP. Policy VI-1.3.2 contains enabling language to ensure such required updates are completed.

Lake County is not a water provider and does not own, operate, or maintain any potable water systems. Lake County has no financial responsibility related to any of its water suppliers' facilities. All potable water systems within the County are owned, maintained and operated by municipalities or private entities. In rural portions of the County, individual water wells, known as domestic self-supply (DSS), provide potable water to residences. Agricultural or industrial users in the County not served by a municipal or private supplier are served by private wells permitted by the applicable water management district. While the County is not a provider of potable water, it does recognize the importance of water supply planning in providing for the residents and businesses in Lake County.

### 1.2 LAKE COUNTY LOCATION AND CONTEXT

#### 1.2.1. WATER MANAGEMENT DISTRICTS

Lake County falls within two Water Management Districts. The majority of Lake County is within the St. Johns River Water Management District (SJRWMD); a small portion of southwest Lake County (approximately 5%) lies within the Southwest Florida Water Management District (SWFWMD). The area within SWFWMD lies entirely within the Green Swamp Area of Critical State Concern (GSACSC).

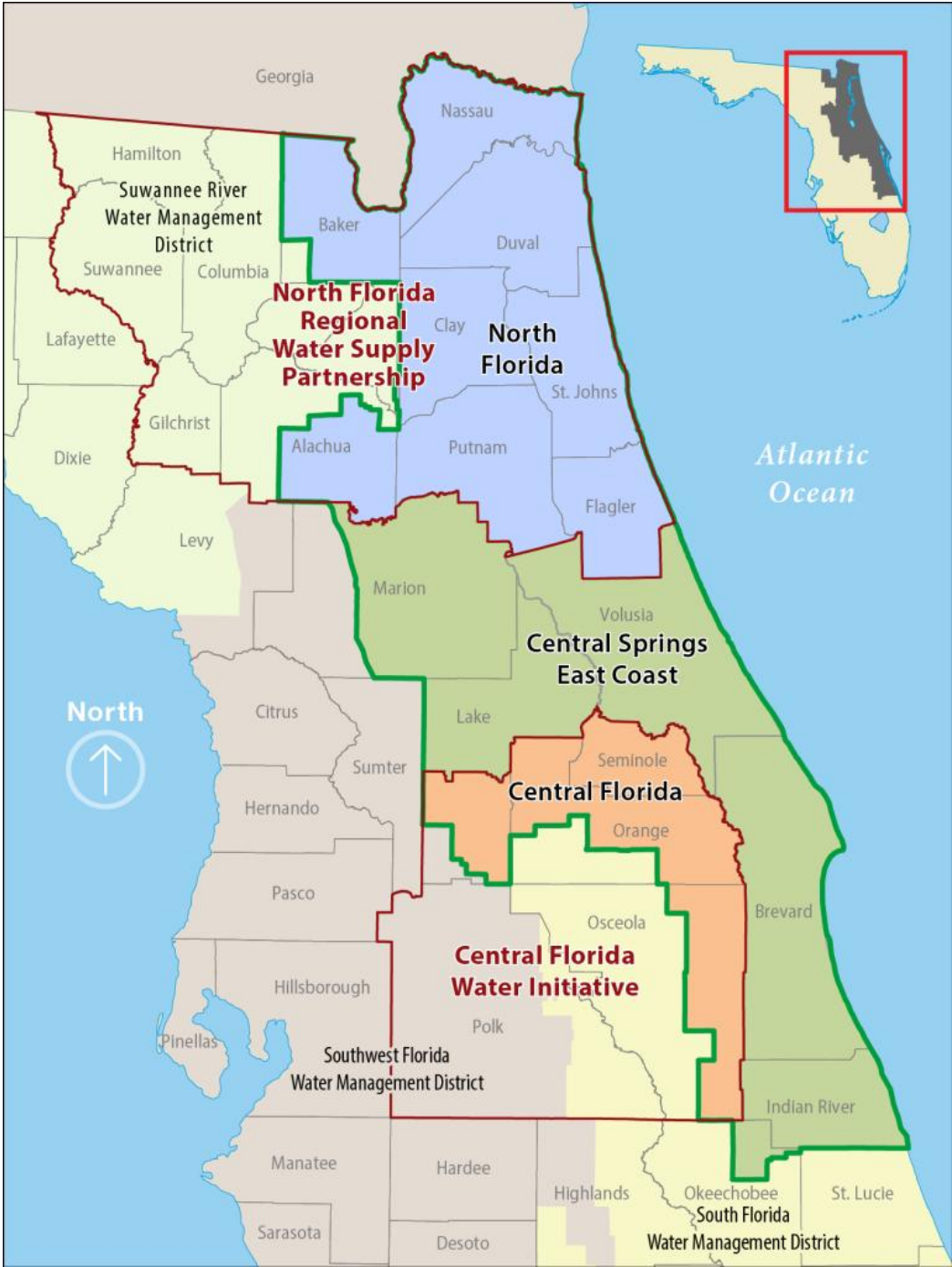
#### 1.2.2. REGIONAL WATER SUPPLY PLANNING AREAS

Lake County is subject to the following three RWSPs:

- **Northern Lake County:** Central Springs / East Coast (CSEC) RWSP (2020-2040) [*St. Johns River Water Management District, approved February 8, 2022*]
- **Southern Lake County:** Central Florida Water Initiative (CFWI) RWSP [*St. Johns River Water Management District, approved November 10, 2020*]
- **Southwest Lake County / Green Swamp area:** Northern Planning Region RWSP [*Southwest Florida Water Management District, approved November 17, 2020*]

See Map 1. Because the area of Lake County included in the SWFWMD Northern Planning Region RWSP is located within the GSACSC, the RWSP adopted by SWFWMD includes a projected zero percent water demand and increase; as a result, the plan generally excludes the area from the adopted plan. Further, this area of Lake County is included in the CFWI-RWSP.

**MAP 1: WATER SUPPLY PLANNING REGIONS MAP**



Source: [St. Johns River Water Management District](#)

### **1.2.3. WATER SOURCES AND SUPPLIERS**

Fresh groundwater from the Upper Floridan aquifer currently constitutes the main source of potable water for all of Lake County. Fourteen municipalities and twenty-eight private suppliers provide water to specified service areas within the County. Residential portions of the County located outside the service areas of the County's 41 providers rely on wells, or Domestic Self-Supply. Agricultural, Commercial, Industrial, and Mining uses not served by municipal or private suppliers are permitted through the applicable water management district under the consumptive use permit program for potable water use related to their activities. In the future, surface water sources will most likely be tapped by these providers for alternative potable water supply. As stated previously, Lake County is not a potable or reclaimed water supplier and has no supply or distribution systems and, at present, does not anticipate becoming a utility for the purposes of providing potable or reclaimed water.

#### **1.2.3.1 WATER SOURCE PROTECTION BEST MANAGEMENT PRACTICES**

Protection of water sources is important to ensure the quality and quantity of water and wellheads that supply water for a Public Water System. Lake County shall regulate uses and activities consistent with the Public Facilities and Conservation Elements to protect Lake County's main source of potable water. Lake County's water source practices shall include the following protection standards:

- Development Best Management Practices for Ground Water Protection Policy I-3.4.9
  - Ground Water Protection Policy I-7.5.7
  - Groundwater Protection Policy VI-1.3.7
  - Florida Aquifer Vulnerability Assessment Map Policy IX-1.1.2
  - Protection Strategies Policy IX-1.3.1
1. Continue ongoing commitment to safeguarding the health and sustainability of Lake County's community water resources.
  2. Require coordination with federal, state, regional, and local agencies to protect the quantity and quality of groundwater resources and recharge areas and prevent excessive groundwater draw-down caused by withdrawal for consumptive uses.
  3. Require coordination of development plans with Florida Department of Environmental Protection and/or St. Johns River Water Management District in developing specific programs and activities to conserve water quality and quantity.
  4. Continue to protect the quality and quantity of current and projected water sources by limiting development in prime water recharge areas.
  5. Continue development of best management practices for ground water protection to minimize the contribution of nutrients and pollutants to ground water and to foster stewardship of the Wekiva Springshed, special design and Best Management Practices shall be instituted for development within the Wekiva Study Area (WSA).
  6. Limit the uses and activities located within a Zone of Exclusion, which is the land area surrounding a wellhead on which a present or future land use has the potential to negatively impact water quality and quantity of an Aquifer as a results of the induced Recharge from that wellhead's cone of depression, which is an approximation to the physical drawdown in the water elevation resulting from a pumping well.

7. Continue Lake County's dedication to working collaboratively with local municipalities to protect wellhead protection areas and the exclusion zones associated with them. These critical areas, which have been duly adopted by the municipalities for the protection of municipal utilities, serve as the foundation for ensuring the continued safety and availability of clean, safe drinking water. Collective efforts should focus on preserving these wellhead protection zones through coordinated planning, responsible land use practices, and continued dialogue with all relevant stakeholders. By maintaining these protection measures, we strive to ensure that future generations have access to a secure and sustainable water supply, while supporting the needs of our municipalities and their residents. Recognizing the importance of consistent and proactive management in protecting these vital resources and will continue to cooperate with municipalities, local agencies, and other partners to ensure that the wellhead protection areas and exclusion zones remain safeguarded for the benefit of all.
8. Continue regulating uses and activities consistent with the Conservation Element and other policies of the Comprehensive Plan to protect ground water resources, including but not limited to aquifer recharge, springsheds, karst features and areas of aquifer vulnerability.
9. Continue coordination with the Florida Geological Survey, Water Management Districts and the Florida Department of Environmental Protection to prepare a Florida Aquifer Vulnerability Assessment Map on a County-wide scale to determine areas within the County vulnerable to contamination of the Floridan aquifer, including primary, secondary and tertiary protection zones, karst features, springs and sinks.
10. Continue fostering local stewardship "adopt a springs" type programs and other incentive and volunteer springshed awareness and protection programs.
11. Continue to adopt state criteria, Best Management Practices or equivalent for the design and construction of stormwater management systems in Aquifer Protection Zones and karst areas.

### **1.3 INTERGOVERNMENTAL COORDINATION**

Lake County shall coordinate with the plans and programs of local, regional, state, and federal agencies to more effectively and efficiently protect and manage the water resources of the County, in accordance with the Intergovernmental Coordination Element of the Comprehensive Plan.

#### **1.3.1 INTERGOVERNMENTAL COORDINATION WITH PUBLIC WATER SUPPLIERS**

Capital Improvements Element Policy II-3.1.6 contains enabling language for the implementation of the County's concurrency management system, in accordance with Section 163.3180(2), Florida Statutes, include ensuring consultation with the appropriate utility/water supplier to determine water supply availability prior to issuing a building permit and for ensuring water supplies and facilities are available when issuing a certificate of occupancy. Applications for new development within Lake County require submission of a Utility Notification Letter from the relevant public water supplier. The Utility Notification Letter must indicate the following:

- The name and contact details for the water supplier;
- The location and availability of capacity for potable water and wastewater facilities to serve the proposed site, including a description of any required improvements or extensions of existing off-site facilities;
- The projected flows of the water and wastewater treatment and pumping facilities; and
- A statement from utility providers indicating that the availability, capacity, and willingness exists to serve the proposed development.

**1.4 MANDATORY CONNECTION REQUIREMENT**

Pursuant to Policy IX-2.2.2, the County shall require new development within the Urban Future Land Use Series to connect to a public water system, when available as defined by the Land Development Regulations. When a public water system is not available, and the density of the new development exceeds one (1) unit per one (1) net acre, the development must provide and connect to a central water system, unless the Board of County Commissioners grants an exemption.

An exemption to the mandatory connection requirement is only valid until:

- The Board of County Commissioners has determined that the existing method of providing water and wastewater is endangering the environment, public health, safety, or welfare; or
- The private potable water system fails, and a replacement is required, the property is in the Urban Future Land Use Series, and is within the distance established by the Land Development Regulations to be considered available; or
- The private system is relocated, and the property is within the Urban Future Land Use Series.

The County shall require all new development to connect to central water systems consistent with the requirements contained in the Land Development Regulations, based on the size of the development, land use, density, and intensity, if a regional system is not available.

**1.5 CONSERVATION PRACTICES**

The County shall conserve, protect, and enhance the County’s surface water, groundwater, springsheds, floodplains, and wetlands to ensure that these resources are preserved in accordance with the Goals, Objectives, and Policies of the Conservation Element of the Comprehensive Plan.

**1.5.1 WATER CONSERVATION BEST MANAGEMENT PRACTICES**

Lake County will continue to implement conservation and reuse measures enacted for the purpose of reducing the use of potable water consistent with the Public Facilities and Conservation Elements within the Comprehensive Plan to protect Lake County’s main source of potable water. Lake County’s water conservation practices shall include the following conservation standards:

- Adopt Land Development regulations Policy I-1.1.8
- Protection Of Recharge Areas, Areas of Aquifer Vulnerability, And Springsheds Objective IX-1.3
- Development Design Standards Policy I-3.4.5
- Water Conservation Practices Policy I-3.3.25
- Development Requirements within the Green Swamp Area of Critical State Concern Policy I-4.1.5
- Development Designs Standards Policy I-5.1.4
- Rural Conservation Subdivision Policy I-7.4.2
- Support Agriculture Policy I-7.7.2
- Urban Form Guiding Principles Policy I-8.2.2
- Water Conservation Based Landscaping Policy I-8.4.9
- Participate in Long Range Water Conservation Planning Policy III-2.1.2
- Conserve Potable Water Supplies Policy III-2.1.4

- Adopt Water Conservation Measures Policy III-2.1.6
  - Water Use by Golf Course Policy III-2.1.12
  - Best Management Practices Policy III-2.2.14
  - Establish a Water Quality Protection Strategy for Springsheds Policy III-2.3.17
  - Support the Lake Soil and Water Conservation District Policy III-3.4.1
  - Plan for Long-Term Water Supplies Policy VI-1.3.4
  - Coordination with Other Agencies for Protecting Water Supplies Policy VI-1.6.10
  - Educational Enhancement Policy IX-1.2.4
  - Protection Strategies Policy IX-1.3.1
  - Coordination with Other Agencies Policy IX-2.1.8
1. Continue with the adoption and maintenance of water conservation measures and Florida Friendly (right plan in the right place) landscaping.
  2. Continue participation in enhancing the function and quality of the education of its citizens regarding the current water conservation policies.
  3. Continue establishing water conservation programs.
  4. Continue discouraging wasteful practices that would deplete supplies of potable water and shall promote water conservation practices.
  5. Continue requiring that all developments located within the Green Swamp Area of Critical State Concern and Wekiva Study Area use water conservation devices and practices.
  6. Continue to require implementing water conservation techniques including the limitation of overhead irrigation, except for low-volume irrigation such as drip or micro-irrigation systems, and areas used for vegetable gardens for parcels located within the Green Swamp Area of Critical State Concern, Rural Protection Areas and Rural Conservation Subdivision.
  7. Continue requiring landscaping plans for developments within South Lake County, and developers in the Wellness Way Urban Service Area to be based on water conservation principles and practices by requiring Developers to utilize the handbook designs or propose a landscape design that conforms with water conservation principles for review during the permitting process.
  8. Continue participating in the development of long-range water conservation plans that are created as part of the water supply planning process of the Water Management Districts. Lake County shall continue to participate in working groups and advisory groups on supply planning, minimum flows and levels, Total Maximum Daily Loads (TMDLs) including the Florida Water Quality Monitoring Council and other water quality monitoring. Continue to facilitate input from stakeholder groups.
  9. Continue to implement plans and procedures to conserve its potable water supplies to the maximum extent practicable through the implementation of water conservation techniques, programs, and cooperative arrangements with local water utilities.
  10. Continue to adopt provisions for water conservation which further implement the water conservation plans and programs of the federal, state, regional, and local agencies.

11. Continue to adopt provisions for water conservation which further implement the water conservation plans and programs of the federal, state, regional, and local agencies.
12. Continue to support the Lake Soil and Water Conservation District with its ongoing County-wide programs that conserve water, prevent soil erosion, improve irrigation systems, and provide conservation technical assistance and conservation education to the public and to landowners.
13. Continue implementation of water conservation techniques including the restriction of irrigated lawn and landscaping to no more than 50% of all pervious areas for both residential lots and common areas for parcels located within the Wekiva Study Area (WSA).
14. Continue encouraging water conservation techniques in relation to agriculture.
15. Continue green strategy considerations for balance of development, preservation, energy, conservation and water conservation.
16. New and Redeveloped golf courses shall comply with the Land Development Regulations with respect to water conservation, reuse and drought management to limit the impact of golf courses on ground water resources.
17. Continue participating in initiatives that support water conservation, water reuse, and Best Management Practices to minimize the impact of agricultural, horticultural, silvicultural, construction, and landscape practices to surface water quantity and quality, wetland and floodplain areas.
18. Continue to support design criteria for stormwater management practices that adopt water conservation programs.
19. Continue to work with the water management districts and municipalities on water supply plans that provide for water supply needs, encourage water conservation, and protect ground and surface water and water-dependent natural resources.
20. Continue working closely with the federal, state, regional and local agencies to ensure all possible alternatives, acceptable to the County, are explored and implemented with respect to new development and water conservation.
21. Continue to participate in enhancing the function and quality of the education of its citizens about the current water conservation policies.

## **CHAPTER 2: WATER SUPPLY DEMAND**

Water demand projections are developed to estimate future water demands, identify existing and reasonably anticipated sources of water, identify water resource development options, and identify water conservation potential. The water demand projections are developed by the regional water supply planning areas based on the best available information and in coordination with various stakeholder groups. Due to variability and uncertainty in climate, and to allow for adequate planning, water demand projections are provided for a 1-in-5-year drought and 1-in-10-year drought scenario.

Water use estimates and projected water demands are grouped into six categories for the purposes of water supply planning:

- Public Supply
- Domestic Self Supply (DSS) and Small Public Supply Systems (PSS)
- Agricultural Irrigation Self Supply



- Landscape/Recreational/Aesthetic Irrigation Self-Supply
- Commercial/Industrial/Institutional Self Supply and Mining/Dewatering Self Supply
- Power Generation Self Supply

Lake County’s water supply plan focuses on Public Supply, Domestic Self Supply, and Small Public Supply Systems as well as Landscape/Recreational/Aesthetic Irrigation.

The CFWI-RWSP, which incorporates southern Lake County, concluded that traditional fresh, groundwater resources will not be sufficient to meet future water demands or currently permitted withdrawal allocations within the planning area without unacceptable impacts to water resources and related natural ecosystems. As a result, implementation of management strategies, such as water conservation and intergovernmental cooperation are required to ensure that projected demands can be met.

## 2.1 POPULATION AND WATER DEMAND PROJECTIONS

Lake County’s projected population represents a 48 percent increase from the 2015 population, the “base year,” to approximately 487,374 in 2040. Water demand is anticipated to increase at a relatively similar rate, with total demand for the year 2040 ranging between 77 and 82 million gallons per day (mgd).

It is anticipated that most of the population will be served by municipal providers, which is corroborated by the data presented in Table 1, below.

**Table 1. Population and Water Demand Projections 2015-2040\***

Type	Population 2015	Projected Population 2040	Population % Change 2015-2040	Water Demand 2015	Projected Water Demand 2040 (1-in-5)	Projected Water Demand 2040 (1-in-10)	Water Demand % Change 2015-2040
Municipal Providers	188,311	310,821	65%	28.3 mgd	45.5 mgd	48.2 mgd	61% - 70%
Private Providers	80,254	103,898	29%	16.5 mgd	21.8 mgd	23.2 mgd	32% - 41%
Domestic Self-Supply (DSS)	45,258	55,085	22%	7.1 mgd	7.2 mgd	7.6 mgd	1% - 8 %
Small Public Water Supply Systems (SPWSS)	15,536	17,570	13%	1.9 mgd	2.4 mgd	2.5 mgd	29% - 31%
<b>Total (Lake County)</b>	<b>329,359</b>	<b>487,374</b>	<b>48%</b>	<b>54 mgd</b>	<b>77 mgd</b>	<b>82 mgd</b>	<b>43% - 52%</b>

**Sources:** Central Springs / East Coast (CSEC) RWSP [SJRWMD], Central Florida Water Initiative (CFWI) RWSP [SJRWMD], Northern Planning Region RWSP [SWFWMD]

\*For expanded population and water usage projections, see Appendix A, Table A-1.

## 2.2 GROUND WATER AND SURFACE WATER

Groundwater is the primary source of water supply in Lake County, accounting for 97% of water usage within the County. Of the 41 public water suppliers within the County, only 2 utilize surface water as a water source. For expanded ground water and surface water demand projections, see Appendix A, Table A-1.

**Table 2. Surface Water Supply 2015-2040\***

Provider	Provider Type	Surface Water Usage 2015	Surface Water Usage 2040 (Projected)
City of Mount Dora	Municipal	0 mgd	1 mgd
Village Center Service Area	Private	0.59 mgd	1.13 mgd
	<b>Total (Lake County)</b>	0.59 mgd	2.13 mgd

**Source:** Central Springs / East Coast (CSEC) RWSP [SJRWMD]

## 2.3 REUSE

There are currently 24 wastewater treatment facilities supplying reuse water within Lake County. Data from SJRWMD indicates that in 2015 these 24 facilities served 197,987 users with a total reclaimed water flow of 13.79 mgd. By 2040, these facilities are anticipated to support 311,511 users with a projected total reclaimed water flow of 23.78 mgd. As Lake County is not a utility provider, Lake County does not own, operate, or maintain any wastewater treatment facilities. All wastewater treatment facilities are owned and/or operated by Municipal or Private Providers.

### 2.3.1 REUSE PRACTICES

Lake County implements reuse measures and reclaimed water practices consistent with the consistent with the Public Facilities and Conservation Elements. Lake County's reuse measure and reclaimed practices include the following standards:

- Adopt Land Development Regulations Policy I-1.1.8
- Environmental Design Standards Policy I-2.1.8
- Development Design Standards Policy I-3.4.5
- Provision of Potable Water, Sanitary Sewer and Reclaimed Water Utilities Policy I-7.12.2
- Regulation for Reclaimed Water Shall Be Enforced to Prevent Adverse Environmental Impacts Policy I-8.4.10
- Identification of Water Supplies Policy I-8.5.1
- Potable and Re-use Water Facilities Policy I-8.5.2
- Conserve Potable Water Supplies Policy III-2.1.4
- Groundwater Recharge Policy III-2.1.15
- Comply with Wastewater Treatment and Reuse Policy III-2.1.25
- Wastewater Treatment Plant Effluent Discharge Policy III-2.2.10
- Coordination with Other Agencies for Protecting Water Supplies Policy VI-1.6.10
- Monitor the Impact of Reclaimed Water Policy IX-2.1.3

- Coordination with Other Agencies Policy IX-2.1.8
  - Advanced Wastewater Treatment Policy IX-3.2.6
  - Coordinate with Utility Providers Policy VI-1.6.5
1. Adopting and maintaining Land Development Regulations with provision of public facilities including but not limited to potable water, sanitary sewer, reclaimed water, gas and electric utilities, and emergency services.
  2. Requiring the installation of reclaimed water line within service areas to ensure the present or future capability to receive treated reuse water to the maximum extent possible.
  3. Requiring the installation of dual-water lines and meters in all new developments served by a central water system to distribute reuse water even if reuse water is not yet available.
  4. Requiring the use of reuse water for landscape irrigation wherever possible, unless other lower quality water sources are authorized by the St. Johns River Water Management District and/or Southwest Florida Water Management District pursuant to Part II of Chapter 373, F.S.
  5. Requiring potable water, sanitary sewer, and reclaimed water public utilities needed to support approved development may be permitted in all Urban Future Land Use Categories.
  6. Continue the intent of the Wellness Way Urban Service Area to require 100% of landscape irrigation be provided by re-use water. Another type of non-potable water supply may be used for landscape irrigation if re-use water is not available to the PUD. In no instance shall potable water be used for landscape irrigation unless authorized by the St. Johns River Water Management District pursuant to Part II of Chapter 373, Florida Statutes.
  7. Requiring conservation programs, system interconnections and alternative water supply options such as reclaimed water reuse and storage, shall occur when accessible. All development containing irrigated open space shall be required to accept reclaimed water for irrigation when such reclaimed water is available adjacent to the development's boundary. Connection shall be made at the developer's cost.
  8. Monitoring the impact of reclaimed water on potable water demand. Development containing irrigated areas shall be required to accept reclaimed water for irrigation when such reclaimed water is available, unless other lower quality water sources are authorized by the St. Johns River Water Management district and/or Southwest Florida Water Management District pursuant to Part II of Chapter 373, Florida Statutes.
  9. Requiring environmentally responsible development and design appropriate within the Wekiva Study Area, including but not limited to the protection of aquifer recharge areas, wetlands, karst features, wildlife, trees and native vegetation; the use of drought-tolerant landscaping; the use of reclaimed water for irrigation where appropriate, and the promotion of energy efficient "green-building" for parcels located within the Mount Plymouth – Sorrento Special Community.
  10. Requiring all new development to connect to non-potable sources of water, such as reclaimed water, for landscape irrigation, when available. The availability of, and requirement to connect to, Alternative Water Supplies, including reclaimed water, will be determined during the PUD approval process unless the use of water from other water sources is authorized by the St. Johns River Water Management District pursuant to Part II of Chapter 373, Florida Statutes.

11. Protecting groundwater recharge areas through land use strategies including but not limited to reduction of land use densities in critical areas, mandatory open space, protection of pervious surface areas, drought-tolerant landscaping, and the use of reclaimed water, stormwater or other non-potable water sources for irrigation. An aquifer recharge overlay shall be developed that sets standards to protect the infiltration functions of protected and most effective aquifer recharge areas.
12. Requiring that the disposal of effluents from all wastewater treatment plants comply with federal, state, Water Management District and local regulations. The County shall cooperate with municipal and private utilities in preparing a grey water treatment and reuse program and shall address the needs of this program within the Land Development Regulations. All new private central wastewater systems, required for approval of development at densities requiring such central systems, shall be designed and built as advanced wastewater treatment systems and shall provide reclaimed water for landscape irrigation throughout the development to which service is provided. Should additional quantities of reclaimed water be available above the demand generated by the approved development, such water shall be made available outside of the development to adjacent or nearby properties with costs to extend such service beyond the approved development boundaries borne by the end users. The County may require adjacent or nearby new development to use excess reclaimed water for landscape irrigation as a condition of development approval, unless other lower quality water sources are authorized by the Water Management District or Florida Department of Environmental Protection pursuant to Part II of Chapter 272, Florida Statutes.
13. Prohibit the discharge of wastewater treatment plant effluent and reclaimed water into the surface waters of the County. Mines which release reclaimed water into on-site pits as part of their permitted mining operations are exempt from this prohibition; however, such reclaimed water shall not be allowed to enter any off-site surface waters.
14. Requiring applicants to submit site plans and plats to the electrical, potable water, sanitary sewer, reclaimed water, and all other public or private utilities to assist in the planning and programming of utility services.
15. Requiring all new Type II and Type III (100,000 gallons per day and greater) private central wastewater systems in Lake County shall be designed and built as advanced wastewater treatment systems and shall provide reclaimed water throughout the development(s) where service is provided. Should additional quantities of reclaimed water be available above the demand generated by the approved development(s), such water shall be made available outside of the development(s) to adjacent or nearby properties with such costs to extend service beyond the development(s)' boundaries borne by the end users. The County may require adjacent or nearby development to use such excess reclaimed water as a condition of development approval. Advanced Wastewater Treatment means treatment of Domestic Wastewater to achieve an effluent after disinfection containing not more than are 5 mg/l Biochemical Oxygen Demand (BOD), 5 mg/l of Total Suspended Solids (TSS), 3 mg/l Total Nitrogen, and 1 mg/l Total Phosphorus (per subsection 403.086(4), Florida Statutes, as may be amended in the future).
16. Requiring the area served by Sunshine Water Services, or their successor, surrounding the planned interchange between the Lake-Orange Connector and CR 455 does not currently have potable and re-use water distribution and treatment facilities. Prior to any rezoning of properties in the Sunshine Water Services territory, the applicant for rezoning must provide, and the County must approve, a utility master plan for the property, including all

off-site obligations for service. The utility master plan must demonstrate how the infrastructure will be financed and constructed.

Table 3 shows all wastewater treatment facilities supplying reuse water within Lake County.

<b>Table 3. Wastewater Treatment Facilities Supplying Reuse Water</b>	
CITY OF CLERMONT - EAST WWTF	CLERBROOK RV & GOLF RESORT
CITY OF EUSTIS - EASTERN	LAKE GROVES WWTF
CITY OF EUSTIS WWTF	MID-FLORIDA LAKES
CITY OF GROVELAND – SAMPEY ROAD WWTF	OAK SPRINGS MHP
CITY OF GROVELAND – SUNSHINE PARKWAY WWTF	PENNBROOKE WWTF
CITY OF LEESBURG – CANAL STREET	PLANTATION AT LEESBURG
CITY OF LEESBURG – TURNPIKE	PINE ISLAND
CITY OF MINNEOLA WWTF	SOUTHLAKE UTILITIES
CITY OF MOUNT DORA #1 WWTF	ST. JOHNS RIVER UTILITY WWTF
CITY OF MOUNT DORA #2 – JAMES SNELL	THE VILLAGES – VILLAGES WWTF
CITY OF UMATILLA WWTF	WATER OAK UTILITIES
TOWN OF LADY LAKE WWTF	WOODLEA ROAD WRF

#### **2.4 ALTERNATIVE WATER SUPPLY (AWS)**

Lake County is not a water provider and does not own, operate, or maintain any alternative water supplies (AWS) as part of their long-term plans. The County is not fiscally responsible for any current or planned AWS projects within any Water Management District region.

## CHAPTER 3: WATER SUPPLY SOURCES

### 3.1 MUNICIPAL WATER SUPPLIERS

The fourteen municipalities in Lake County are public water providers with established service areas, and Lake County currently has Interlocal Service Boundary Agreements (ISBAs) with nine of these municipalities. These municipalities are all located within the St. Johns River Water Management District (SJRWMD).

Table 4 lists all municipal providers, whether an ISBA is in place between the County and the municipality, and whether the terms addressed in the ISBA are sufficient to meet projected water supply needs.

ISBAs which are deemed “insufficient” may require review or renegotiation to determine and ensure water supply demand will be met through 2040. Lake County is currently in the process of reviewing ISBA and Joint Planning Area (JPA) agreements with all 14 municipalities; it is recommended that future agreements address and include verbiage regarding coordination and Levels of Service (LOS) standards for water demand and supply.

**Table 4. Municipal Water Suppliers**

<b>Municipality</b>	<b>ISBA Status</b>	<b>Agreement Status</b>
City of Clermont	Enacted December 2, 2014	Sufficient
City of Eustis	None	N/A
City of Fruitland Park	None	N/A
City of Groveland	Enacted February 13, 2013	Insufficient
Town of Howey-in-the-Hills	Enacted February 13, 2013	Insufficient
Town of Lady Lake	Enacted September 6, 2013	Sufficient
City of Leesburg	Enacted February 13, 2013	Insufficient
City of Mascotte	Enacted February 13, 2013	Insufficient
City of Minneola	Enacted September 7, 2010	Sufficient
Town of Montverde	Enacted September 7, 2010	Sufficient
City of Mount Dora	None	N/A
City of Tavares	Enacted April 21, 2015	Sufficient
City of Umatilla	Enacted February 26, 2013	Sufficient
Town of Astatula	N/A	N/A

## MAP 2: APPROVED ISBA AREA MAP

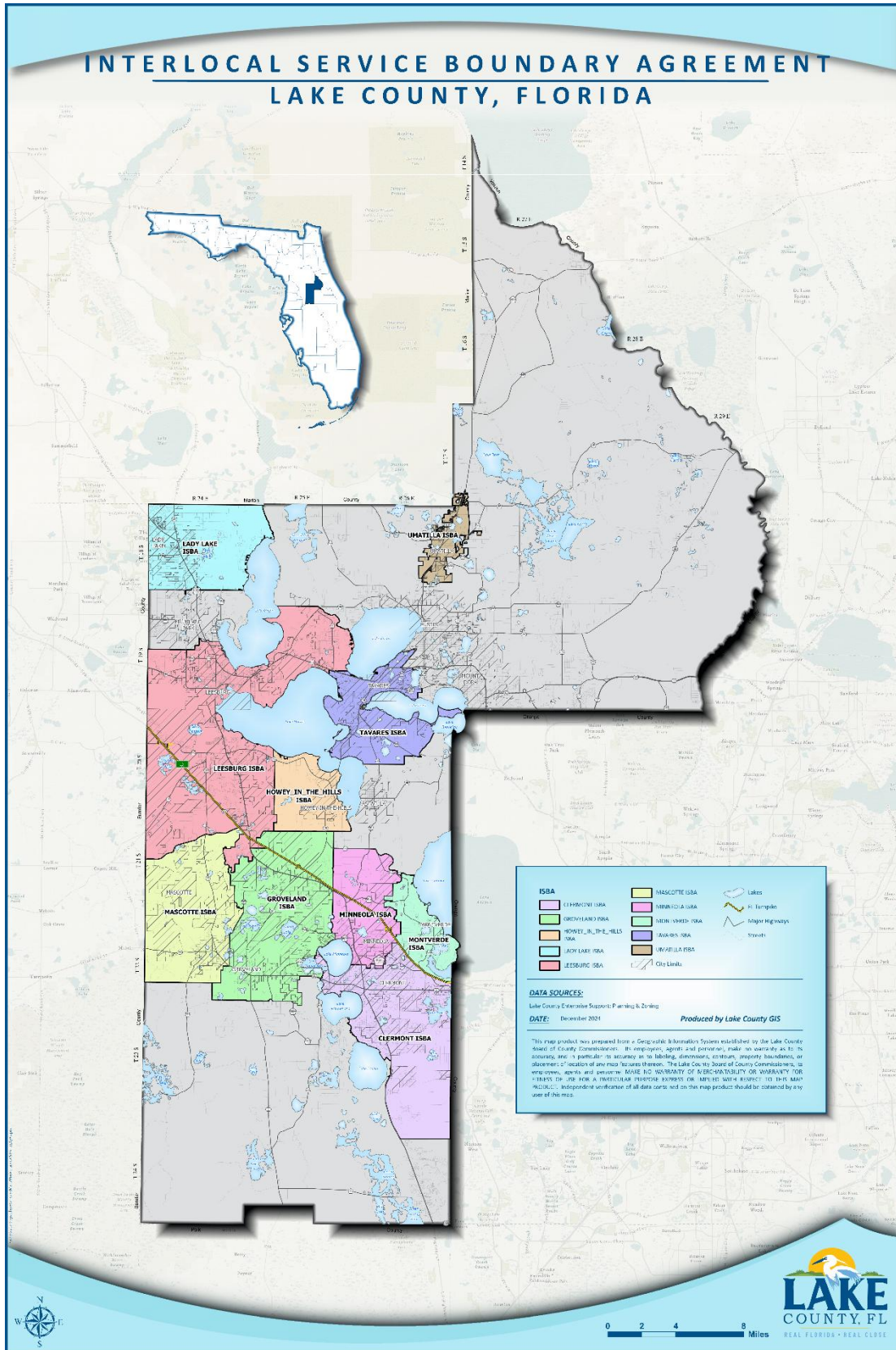


Table 5 reflects the reported and projected populations from the years 2015 – 2040 for all municipal water suppliers within Lake County. The Goals, Objectives, and Policies of the Comprehensive Plan direct growth toward existing urban areas; as such, municipal service areas are anticipated to absorb the majority of growth within the County and will account for approximately 63.8% of the overall projected population by 2040.

**Table 5. Projected Municipal Service Areas Population Growth 2015-2040**

Municipality	Reported Population (2015)	Projected Population (2040)	Percentage of Overall
City of Clermont	33,914	53,459	10.9%
City of Eustis	25,450	37,829	7.8%
City of Fruitland Park	5,127	8,304	2.7%
City of Groveland	16,315	28,085	5.8%
Town of Howey-in-the-Hills	1,167	2,439	0.5%
Town of Lady Lake	5,688	10,746	2.2%
City of Leesburg	34,159	62,073	12.7%
City of Mascotte	4,825	12,651	2.6%
City of Minneola	13,453	23,267	4.8%
Town of Monteverde	2,275	3,014	0.6%
City of Mount Dora	23,718	35,371	7.3%
City of Tavares	18,326	25,349	5.2%
City of Umatilla	3,894	8,234	1.7%
<b>Total (All Municipalities)</b>	<b>188,311</b>	<b>310,821</b>	<b>63.8%</b>
<b>Lake County (Overall)</b>	<b>329,359</b>	<b>487,374</b>	<b>100%</b>

Sources: Central Springs / East Coast (CSEC) RWSP [SJRWMD], Central Florida Water Initiative (CFWI) RWSP [SJRWMD]

\* For expanded projections, see Appendix A, Table A-2.

Table 6 details the projected combined water demand for all municipal providers within Lake County. Municipal Service Areas are anticipated to account for approximately 58% of the total water demand, when compared against the overall demand projection for Lake County of 77 mgd to 82 mgd in the year 2040. Map 3 depicts the limits of the Municipal Service Areas, which extend beyond the existing city limits and take in portions of unincorporated Lake County.

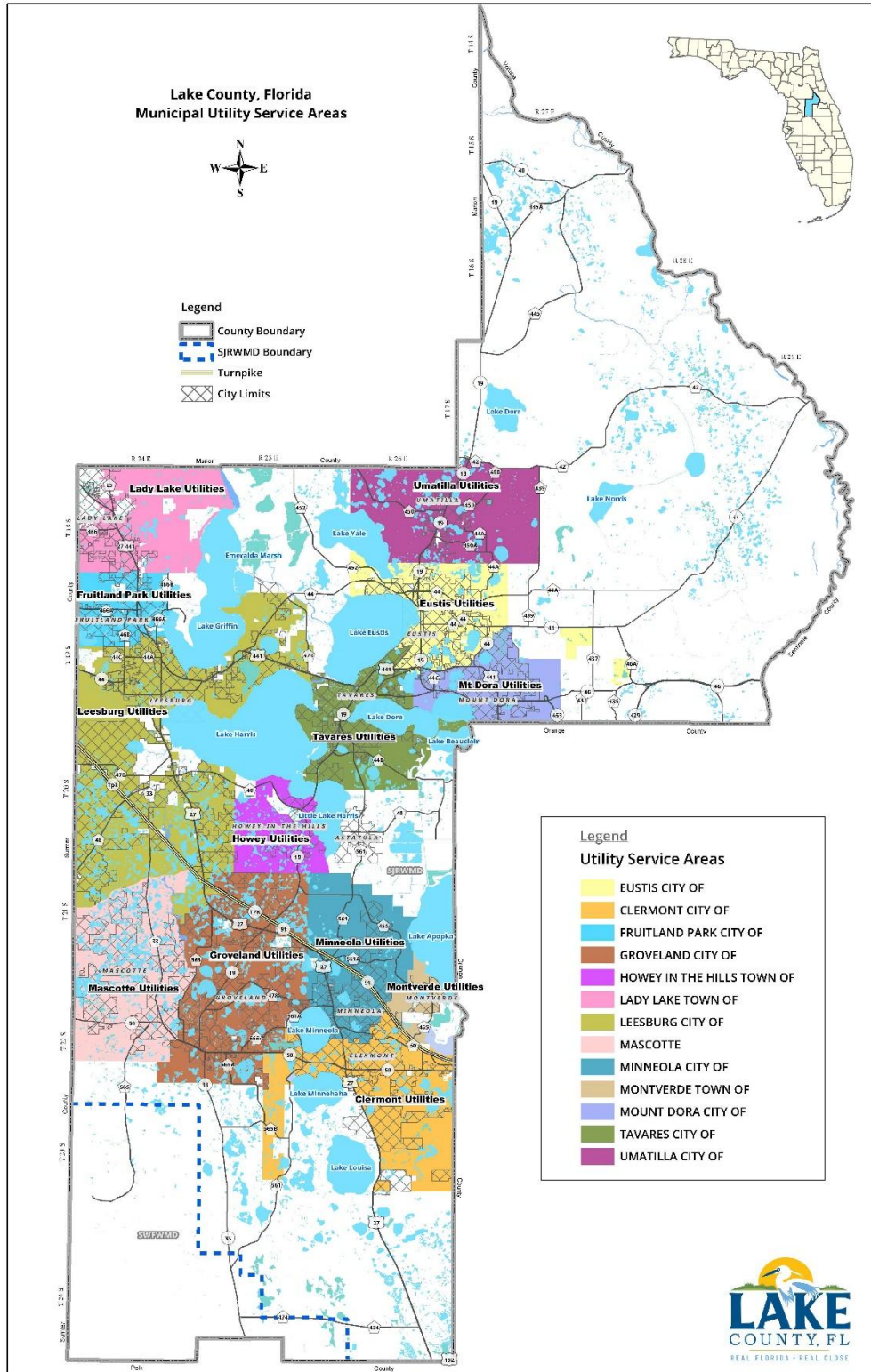
<b>Table 6. Projected Water Demand for Municipal Lake County Water Suppliers*</b>					
Total Projected Municipal Supplier Demand	MUNICIPAL PROVIDER DEMAND PROJECTIONS (mgd)				
	2025	2030	2035	2040 (1-in-5)	2040 (1-in-10)
	36.6	39.5	42.5	45.5	48.2

Sources: Central Springs / East Coast (CSEC) RWSP [SJRWMD], Central Florida Water Initiative (CFWI) RWSP [SJRWMD]

\* For expanded projections, see Appendix A, Table A-2.



### MAP 3: MUNICIPAL UTILITY SERVICE AREA MAP



### 3.1.1 LEVEL OF SERVICE STANDARD

Lake County Comprehensive Plan Policy II-1.1.8 entitled Potable Water Levels of Service states that the Level of Service (LOS) for central potable water supplies in unincorporated areas is 100 gallons per capita per day, or the Equivalent Residential Unit (ERU) for non-residential development. If connection is required to a municipal or private utility, and the development is within the Utility Service Area of the utility, the higher level of service as adopted by that utility shall supersede the County’s LOS.

Lake County Comprehensive Plan Policy VI-1.6.6 entitled Coordinate Levels of Service, states that the County shall, to the greatest extent feasible and when in the interest of the County, develop and provide LOS for public and private facilities compatible with adopted LOS of neighboring jurisdictions in and adjacent to Lake County, and appropriate state and regional authorities through active intergovernmental coordination.

Table 7 shows the potable water Level of Service Standard, in gallons per capita per day (GPCPD), adopted by each municipality in its Comprehensive Plan and the average level of service based on historical use.

<b>Table 7. Municipal Potable Water Level of Service Standards</b>		
MUNICIPAL PROVIDER	AVERAGE LEVEL OF SERVICE 2011-2015 (GPCPD)	ADOPTED LEVEL OF SERVICE STANDARD (GPCPD)
City of Clermont	172	185
City of Eustis	136	140
City of Fruitland Park	125	122
City of Groveland	121	100*
Town of Howey-in-the-Hills	175	242
Town of Lady Lake	125	160
City of Leesburg	182	150
City of Mascotte	76	106
City of Minneola	121	126
Town of Montverde	84	126
City of Mount Dora	145	140*
City of Tavares	141	130*
City of Umatilla	110	150
<b>MEDIAN</b>	<b>125</b>	<b>140</b>

\*Adopted LOS adjusted from gallons per household per day, using an average household size of 2.5 people per household.

Sources: Central Springs / East Coast (CSEC) RWSP [SJRWMD], Central Florida Water Initiative (CFWI) RWSP [SJRWMD], [City of Clermont Comprehensive Plan](#), [City of Eustis Water Supply Plan](#), [City of Fruitland Park Comprehensive Plan](#), [City of Groveland Comprehensive Plan](#), [Town of Howey-in-the-Hills Comprehensive Plan](#), [Town of Lady Lake Comprehensive Plan](#), [City of Leesburg Comprehensive Plan](#), [City of Mascotte Comprehensive Plan](#), [City of Minneola Comprehensive Plan](#), [Town of Montverde Comprehensive Plan](#), [City of Mount Dora Comprehensive Plan](#), [City of Tavares Comprehensive Plan](#), [City of Umatilla Comprehensive Plan](#)

This data shows that there is a substantial difference in the adopted level of service standards for the municipalities, ranging from 100 to 242 gallons per capita per day. The data also shows that, of the fourteen Municipal Service Areas, five had actual historic usage rates that exceeded the adopted level of service.

### 3.2 PRIVATE WATER SUPPLIERS

There are currently 28 private water suppliers serving Lake County. They are listed in Table 8. No additional information was provided to Lake County by these providers.

<b>Table 8. Private Water Suppliers</b>	
AQUA SOURCE INC. / KINGS COVE	LEESBURG ASSOCIATED LIMITED PARTNERSHIP / HOLIDAY TRAVEL RESORT
AQUA UTILITIES OF FLORIDA / CARLTON VILLAGE	MID FLORIDA LAKES
AQUA UTILITIES OF FLORIDA / FAIRWAYS AT MT. PLYMOUTH	MISSION INN GOLF & TENNIS RESORT / LAS COLINAS
AQUA UTILITIES OF FLORIDA / LAKE UTILITIES -VALENCIA TERRACE	PARK AT WOLF BRANCH OAKS
AQUA UTILITIES OF FLORIDA / SILVER LAKES - WESTERN SHORES	PENNBROOKE UTILITIES
BLACK BEAR RESERVE / FORMERLY UPSON DOWNS	PLANTATION AT LEESBURG
CLERBROOK GOLF & RV RESORT	SOUTHLAKE UTILITIES INC.
COLINA BAY WATER COMPANY	ST. JOHNS RIVER UTILITY INC.
GINN LA PINE ISLAND LTD LLLP	SUNLAKE ESTATES
GINN PINE ISLAND II LLLP	THOUSAND TRAILS
HARBOR HILLS UTILITIES LTD.	VILLAGE CENTER SERVICE AREA
HAWTHORNE AT LEESBURG	WATER OAK UTILITIES
LAKE GRIFFIN ISLES	WEDGEWOOD HOMEOWNERS ASSOC. INC.
LAKE UTILITY SERVICES INC.	WOODLANDS CHURCH LAKE LLC

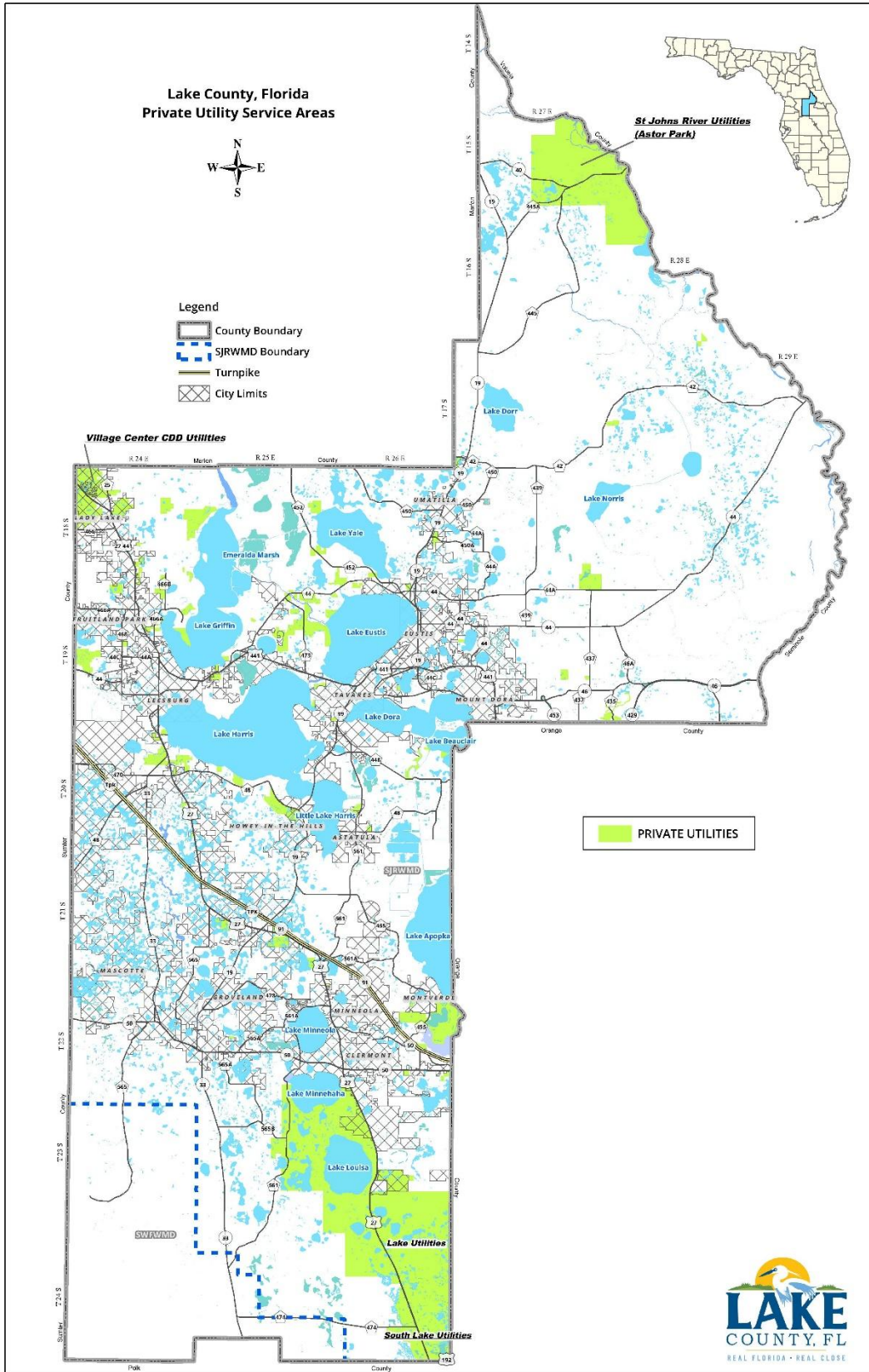
The private suppliers listed in Table 8 are all located within the St. Johns River Water Management District; the CSEC and CFWI Regional Water Supply Plans included water demand projections for these suppliers through the year 2040. This data is shown in Table 9.

<b>Table 9. Projected Water Demand for Private Lake County Water Suppliers</b>					
Total Private Supplier Demand	PRIVATE PROVIDER DEMAND PROJECTIONS (mgd)				
	2025	2030	2035	2040 (1-in-5)	2040 (1-in-10)
	19.6	20.4	21.1	21.8	23.2

Sources: Central Springs / East Coast (CSEC) RWSP [SJRWMD], Central Florida Water Initiative (CFWI) RWSP [SJRWMD]

Private suppliers are anticipated to account for approximately 28% of the total water demand, when compared against the overall demand projection for Lake County of 77 to 82 mgd in the year 2040. Map 4 depicts the limits of the Private Utility Service Areas.

# MAP 4: PRIVATE UTILITY SERVICE AREA MAP



### 3.3 DOMESTIC SELF-SUPPLY (DSS) AND SMALL PUBLIC WATER SUPPLY (SPWS) SYSTEMS

The remaining areas of Lake County are served by Domestic Self-Supply (DSS) and Small Public Water Supply (SPWS) Systems. These areas are the most rural portions of the County and fall outside of the location criteria specified for mandatory connection to a regional or central water supply. Map 5 shows the combined service areas for Municipal and Private Utility Providers; it is assumed that DSS and SPWS Systems are located within the areas shown in white outside these respective boundaries.

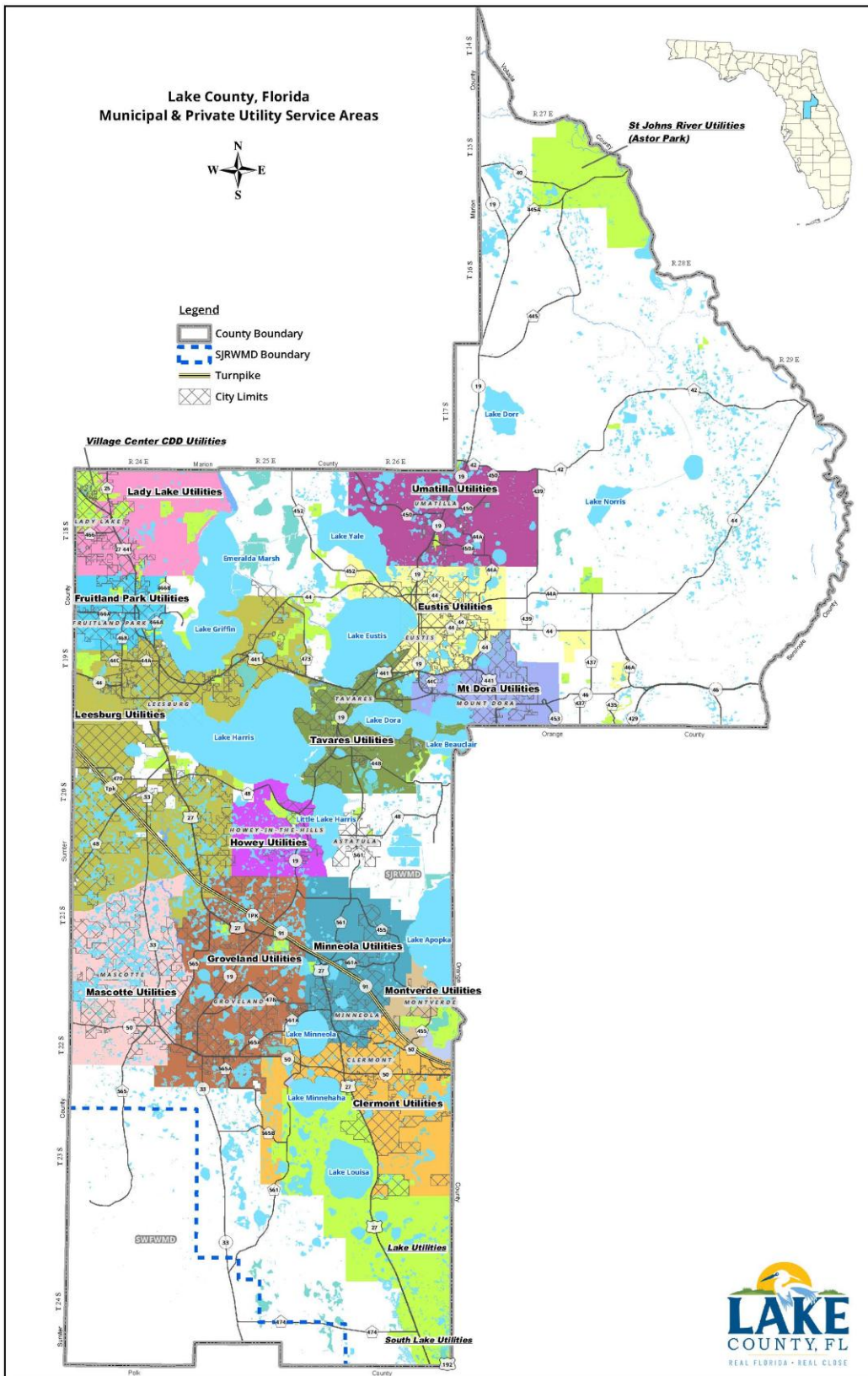
Table 10 below indicates the projected water demand for DSS Systems, which are anticipated to experience a population change of 22% between the years of 2015 and 2040. The data indicates that DSS Systems are only anticipated to experience a 1% - 8% change in use within this time.

<b>Table 10. Projected Water Demand for DSS Systems</b>					
Total DSS Demand	DSS DEMAND PROJECTIONS (mgd)				
	2025	2030	2035	2040 (1-in-5)	2040 (1-in-10)
	5.96	6.35	6.73	7.15	7.58

Table 11 below indicates the projected water demand for SPWS Systems, which are anticipated to experience a population change of 13% between the years of 2015 and 2040. The data indicates that SPWS Systems are anticipated to experience a 29% - 31% change in use within this time.

<b>Table 11. Projected Water Demand for SPWS Systems</b>					
Total SPWS Demand	SPWS DEMAND PROJECTIONS (mgd)				
	2025	2030	2035	2040 (1-in-5)	2040 (1-in-10)
	2.36	2.36	2.36	2.46	2.50

# MAP 5: COMBINED UTILITY SERVICE AREA MAP



**APPENDIX A: EXPANDED DATA**

**TABLE A-1: EXPANDED POPULATION AND DEMAND PROJECTIONS 2015-2040 FOR LAKE COUNTY (COMBINED).**

Lake County Combined Data																																
Type	Utility	Pop. Served	Pop. Projected					Pop. % Change	Water Use			Demand Projections (5-in-10)															Use % Change	Demand Projections (1-in-10)				
			2015	2020	2025	2030	2035		2040	2015			2020			2025			2030			2035			2040			2040	Ground	Surface	Total	
										Ground	Surface	Total	Ground	Surface	Total	Ground	Surface	Total	Ground	Surface	Total	Ground	Surface	Total	Ground	Surface						Total
Municipal	City of Leesburg	34,159	38,692	44,288	49,806	55,877	62,073	82%	5.93	0	5.93	7.04	0	7.04	8.06	0	8.06	9.06	0	9.06	10.17	0	10.17	11.3	0	11.3	91%	11.98	0	11.98		
Municipal	City of Fruitland Park	5,127	6,173	7,503	7,561	8,201	8,304	62%	0.56	0	0.56	0.77	0	0.77	0.94	0	0.94	0.95	0	0.95	1.03	0	1.03	1.04	0	1.04	86%	1.1	0	1.1		
Municipal	Town of Howey-in-the-Hills	1,167	1,534	1,765	2,039	2,133	2,439	109%	0.25	0	0.25	0.27	0	0.27	0.31	0	0.31	0.36	0	0.36	0.37	0	0.37	0.43	0	0.43	72%	0.46	0	0.46		
Municipal	City of Eustis	25,450	30,741	32,891	33,330	35,679	37,829	49%	3.02	0	3.02	4.18	0	4.18	4.47	0	4.47	4.53	0	4.53	4.85	0	4.85	5.14	0	5.14	70%	5.45	0	5.45		
Municipal	City of Umatilla	3,894	4,652	5,620	7,263	7,513	8,234	111%	0.46	0	0.46	0.51	0	0.51	0.62	0	0.62	0.8	0	0.8	0.83	0	0.83	0.91	0	0.91	98%	0.96	0	0.96		
Municipal	City of Tavares	18,326	20,789	22,017	22,653	23,486	25,349	38%	2.59	0	2.59	2.93	0	2.93	3.1	0	3.1	3.19	0	3.19	3.31	0	3.31	3.57	0	3.57	38%	3.78	0	3.78		
Municipal	Town of Lady Lake	5,688	6,863	8,056	8,304	10,081	10,746	89%	0.7	0	0.7	0.86	0	0.86	1.01	0	1.01	1.04	0	1.04	1.26	0	1.26	1.34	0	1.34	91%	1.42	0	1.42		
Municipal	City of Mount Dora	23,718	27,538	29,033	30,750	33,151	35,371	49%	4.82	0	4.82	2.99	1	3.99	3.21	1	4.21	3.46	1	4.46	3.81	1	4.81	4.13	1	5.13	6%	4.44	1	5.44		
Municipal	City of Mascotte	4,825	8,148	9,291	10,401	11,532	12,651	162%	0.36	0	0.36	0.62	0	0.62	0.71	0	0.71	0.79	0	0.79	0.88	0	0.88	0.96	0	0.96	167%	1.02	0	1.02		
Municipal	City of Clermont	33,914	42,630	47,582	51,031	52,273	53,459	58%	5.44	0	5.44	7.33	0	7.33	8.18	0	8.18	8.78	0	8.78	8.99	0	8.99	9.19	0	9.19	69%	9.74	0	9.74		
Municipal	Town of Montverde	2,275	2,590	2,711	2,822	2,915	3,014	32%	0.19	0	0.19	0.22	0	0.22	0.23	0	0.23	0.24	0	0.24	0.24	0	0.24	0.25	0	0.25	32%	0.27	0	0.27		
Municipal	City of Groveland	16,315	19,660	21,808	23,890	26,008	28,085	72%	2.34	0	2.34	2.38	0	2.38	2.64	0	2.64	2.89	0	2.89	3.15	0	3.15	3.4	0	3.4	45%	3.6	0	3.6		
Municipal	City of Minneola	13,453	15,809	17,789	19,666	21,498	23,267	73%	1.65	0	1.65	1.91	0	1.91	2.15	0	2.15	2.38	0	2.38	2.6	0	2.6	2.82	0	2.82	71%	2.99	0	2.99		
Private	Harbor Hills Utilities Ltd.	1,219	1,326	1,326	1,326	1,326	1,326	9%	0.69	0	0.69	0.73	0	0.73	0.73	0	0.73	0.73	0	0.73	0.73	0	0.73	0.73	0	0.73	6%	0.77	0	0.77		
Private	Water Oak Utilities	1,539	1,548	1,548	1,548	1,548	1,548	1%	0.28	0	0.28	0.29	0	0.29	0.29	0	0.29	0.29	0	0.29	0.29	0	0.29	0.29	0	0.29	4%	0.31	0	0.31		
Private	Sunlake Estates	637	637	637	637	637	637	0%	0.15	0	0.15	0.27	0	0.27	0.27	0	0.27	0.27	0	0.27	0.27	0	0.27	0.27	0	0.27	80%	0.29	0	0.29		
Private	Aqua Utilities of Florida / Carlton Village	577	968	1,015	1,015	1,015	1,015	76%	0.05	0	0.05	0.07	0	0.07	0.08	0	0.08	0.08	0	0.08	0.08	0	0.08	0.08	0	0.08	60%	0.08	0	0.08		
Private	Aqua Utilities of Florida / Lake Utilities -Valencia Terrace	332	335	335	335	335	335	1%	0.04	0	0.04	0.04	0	0.04	0.04	0	0.04	0.04	0	0.04	0.04	0	0.04	0.04	0	0.04	0%	0.04	0	0.04		
Private	Aqua Utilities of Florida / Silver Lakes - Western Shores	3,776	4,064	4,064	4,064	4,064	4,066	8%	0.41	0	0.41	0.45	0	0.45	0.45	0	0.45	0.45	0	0.45	0.45	0	0.45	0.45	0	0.45	10%	0.48	0	0.48		
Private	Mission Inn Golf & Tennis Resort / Las Colinas	435	453	457	457	457	465	7%	0.13	0	0.13	0.56	0	0.56	0.57	0	0.57	0.57	0	0.57	0.57	0	0.57	0.58	0	0.58	346%	0.61	0	0.61		
Private	Aqua Source Inc. / Kings Cove	506	512	514	514	514	514	2%	0.04	0	0.04	0.04	0	0.04	0.04	0	0.04	0.04	0	0.04	0.04	0	0.04	0.04	0	0.04	0%	0.04	0	0.04		
Private	Pennbrooke Utilities	2,488	2,496	2,496	2,496	2,496	2,496	0%	0.41	0	0.41	0.44	0	0.44	0.44	0	0.44	0.44	0	0.44	0.44	0	0.44	0.44	0	0.44	7%	0.47	0	0.47		
Private	Plantation at Leesburg	5,061	5,063	5,063	5,063	5,063	5,063	0%	1.23	0	1.23	1.22	0	1.22	1.22	0	1.22	1.22	0	1.22	1.22	0	1.22	1.22	0	1.22	-1%	1.29	0	1.29		
Private	Lake Griffin Isles	237	238	238	238	238	238	0%	0.07	0	0.07	0.07	0	0.07	0.07	0	0.07	0.07	0	0.07	0.07	0	0.07	0.07	0	0.07	0%	0.07	0	0.07		
Private	Hawthorne at Leesburg	1,787	1,809	1,809	1,809	1,809	1,809	1%	0.39	0	0.39	0.4	0	0.4	0.4	0	0.4	0.4	0	0.4	0.4	0	0.4	0.4	0	0.4	3%	0.42	0	0.42		
Private	Mid Florida Lakes	1,709	1,709	1,709	1,709	1,709	1,709	0%	0.22	0	0.22	0.29	0	0.29	0.29	0	0.29	0.29	0	0.29	0.29	0	0.29	0.29	0	0.29	32%	0.31	0	0.31		
Private	Wedgewood Homeowners Assoc. Inc.	721	768	768	768	768	768	7%	0.12	0	0.12	0.14	0	0.14	0.14	0	0.14	0.14	0	0.14	0.14	0	0.14	0.14	0	0.14	17%	0.15	0	0.15		
Private	St. Johns River Utility Inc.	3,873	4,083	4,198	4,286	4,313	4,315	11%	0.25	0	0.25	0.3	0	0.3	0.3	0	0.3	0.31	0	0.31	0.31	0	0.31	0.31	0	0.31	24%	0.32	0	0.32		
Private	Village Center Service Area	17,588	17,588	17,588	17,588	17,588	17,588	0%	3.79	0.59	4.38	3.27	1.13	4.4	3.27	1.13	4.4	3.27	1.13	4.4	3.27	1.13	4.4	3.27	1.13	4.4	0%	3.53	1.13	4.66		
Private	Park at Wolf Branch Oaks	281	285	285	285	285	285	1%	0.09	0	0.09	0.11	0	0.11	0.11	0	0.11	0.11	0	0.11	0.11	0	0.11	0.11	0	0.11	22%	0.12	0	0.12		
Private	Aqua Utilities of Florida / Fairways at Mt. Plymouth	583	712	712	712	712	712	22%	0.08	0	0.08	0.11	0	0.11	0.11	0	0.11	0.11	0	0.11	0.11	0	0.11	0.11	0	0.11	38%	0.12	0	0.12		
Private	Leesburg Associated Limited Partnership / Holiday Travel Resort	1,004	1,004	1,013	1,013	1,013	1,013	1%	0.11	0	0.11	0.12	0	0.12	0.12	0	0.12	0.12	0	0.12	0.12	0	0.12	0.12	0	0.12	9%	0.13	0	0.13		
Private	Black Bear Reserve / Formerly Upton Downs	625	728	728	820	820	820	31%	0.44	0	0.44	0.13	0	0.13	0.13	0	0.13	0.15	0	0.15	0.15	0	0.15	0.15	0	0.15	-66%	0.16	0	0.16		
Private	Southlake Utilities Inc.	7,044	8,387	9,643	10,890	12,183	13,462	91%	1.65	0	1.65	1.92	0	1.92	2.21	0	2.21	2.49	0	2.49	2.79	0	2.79	3.08	0	3.08	87%	3.26	0	3.26		
Private	Thousand Trails	1,420	1,406	1,417	1,428	1,438	1,448	2%	0.21	0	0.21	0.17	0	0.17	0.17	0	0.17	0.17	0	0.17	0.17	0	0.17	0.17	0	0.17	-19%	0.18	0	0.18		
Private	Lake Utility Services Inc.	23,150	27,578	32,500	34,383	36,019	37,590	62%	4.38	0	4.38	5.6	0	5.6	6.6	0	6.6	6.98	0	6.98	7.31	0	7.31	7.63	0	7.63	74%	8.09	0	8.09		
Private	Woodlands Church Lake LLC	669	661	665	669	672	675	1%	0.06	0	0.06	0.11	0	0.11	0.11	0	0.11	0.11	0	0.11	0.11	0	0.11	0.11	0	0.11	83%	0.12	0.12	0.24		
Private	Ginn La Pine Island LTD LLLP	17	32	54	79	114	152	794%	0.12	0	0.12	0.01	0	0.01	0.01	0	0.01	0.01	0	0.01	0.02	0	0.02	0.03	0	0.03	-75%	0.03	0.03	0.06		

Lake County Combined Data																														
Type	Utility	Pop. Served	Pop. Projected					Pop. % Change	Water Use			Demand Projections (5-in-10)															Use % Change	Demand Projections (1-in-10)		
									2015			2020			2025			2030			2035			2040				2040		
			2015	2020	2025	2030	2035		2040	2015-2040	Ground	Surface	Total	Ground	Surface	Total	Ground	Surface	Total	Ground	Surface	Total	Ground	Surface	Total	Ground		Surface	Total	2015-2040
Private	Clerbrook Golf & RV Resort	2,747	2,714	2,730	2,744	2,758	2,772	1%	0.08	0	0.08	0.1	0	0.1	0.1	0	0.1	0.1	0	0.1	0.1	0	0.1	0.11	0	0.11	38%	0.12	0	0.12
Private	Ginn Pine Island II LLLP	96	236	402	569	749	931	870%	0.21	0	0.21	0.08	0	0.08	0.13	0	0.13	0.19	0	0.19	0.25	0	0.25	0.31	0	0.31	48%	0.33	0	0.33
Private	Colina Bay Water Company	133	136	138	140	143	146	10%	0.17	0	0.17	0.09	0	0.09	0.1	0	0.1	0.1	0	0.1	0.1	0	0.1	0.1	0	0.1	-41%	0.11	0	0.11
DSS	DSS - SWFWMD	1,059	1,296	1,579	1,853	2,122	2,383	125%	0.14	0	0.14	0.17	0	0.17	0.2	0	0.2	0.24	0	0.24	0.27	0	0.27	0.31	0	0.31	121%	0.329	0	0.329
DSS	DSS - SJRWMD/CSEC	35,815	35,931	39,226	41,367	43,498	45,927	28%	5.83	0	5.83	4.67	0	4.67	5.1	0	5.1	5.38	0	5.38	5.65	0	5.65	5.97	0	5.97	2%	6.33	0	6.33
DSS	DSS - SJRWMD / CFWI	8,384	4,568	5,137	5,691	6,241	6,775	-19%	1.08	0	1.08	0.59	0	0.59	0.66	0	0.66	0.73	0	0.73	0.81	0	0.81	0.87	0	0.87	-19%	0.92	0	0.92
SPWSS	SPWSS - SJRWMD/CSEC	12,512	13,577	14,180	14,207	14,233	14,258	14%	1.55	0	1.55	1.94	0	1.94	2.03	0	2.03	2.03	0	2.03	2.03	0	2.03	2.13	0	2.13	37%	2.16	0	2.16
SPWSS	SPWSS - SJRWMD / CFWI	3,024	3,077	3,168	3,212	3,260	3,312	10%	0.36	0	0.36	0.31	0	0.31	0.33	0	0.33	0.33	0	0.33	0.33	0	0.33	0.33	0	0.33	-8%	0.34	0	0.34
<b>Total Lake County</b>		<b>329,359</b>	<b>371,744</b>	<b>407,696</b>	<b>433,431</b>	<b>460,487</b>	<b>487,374</b>	<b>48%</b>	<b>53</b>	<b>1</b>	<b>54</b>	<b>57</b>	<b>2</b>	<b>59</b>	<b>62</b>	<b>2</b>	<b>65</b>	<b>66</b>	<b>2</b>	<b>69</b>	<b>71</b>	<b>2</b>	<b>73</b>	<b>75</b>	<b>2</b>	<b>77</b>	<b>43%</b>	<b>79</b>	<b>2</b>	<b>82</b>

Sources: Central Springs / East Coast (CSEC) RWSP [SJRWMD], Central Florida Water Initiative (CFWI) RWSP [SJRWMD], Northern Planning Region RWSP [SWFWMD]

Notes: Water Use and Demand Projections shown in million gallons per day (mgd).

**TABLE A-2: EXPANDED POPULATION AND DEMAND PROJECTIONS 2015-2040 FOR LAKE COUNTY (MUNICIPAL SUPPLIERS).**

Lake County Municipal Providers																														
Type	Utility	Pop. Served	Pop. Projected					Pop. % Change	Water Use			Demand Projections (5-in-10)															Use % Change	Demand Projections (1-in-10)		
									2015			2020			2025			2030			2035			2040				2040		
			2015	2020	2025	2030	2035		2040	2015-2040	Ground	Surface	Total	Ground	Surface	Total	Ground	Surface	Total	Ground	Surface	Total	Ground	Surface	Total	Ground		Surface	Total	2015-2040
Municipal	City of Leesburg	34,159	38,692	44,288	49,806	55,877	62,073	82%	5.93	0	5.93	7.04	0	7.04	8.06	0	8.06	9.06	0	9.06	10.17	0	10.17	11.3	0	11.3	91%	11.98	0	11.98
Municipal	City of Fruitland Park	5,127	6,173	7,503	7,561	8,201	8,304	62%	0.56	0	0.56	0.77	0	0.77	0.94	0	0.94	0.95	0	0.95	1.03	0	1.03	1.04	0	1.04	86%	1.1	0	1.1
Municipal	Town of Howey-in-the-Hills	1,167	1,534	1,765	2,039	2,133	2,439	109%	0.25	0	0.25	0.27	0	0.27	0.31	0	0.31	0.36	0	0.36	0.37	0	0.37	0.43	0	0.43	72%	0.46	0	0.46
Municipal	City of Eustis	25,450	30,741	32,891	33,330	35,679	37,829	49%	3.02	0	3.02	4.18	0	4.18	4.47	0	4.47	4.53	0	4.53	4.85	0	4.85	5.14	0	5.14	70%	5.45	0	5.45
Municipal	City of Umatilla	3,894	4,652	5,620	7,263	7,513	8,234	111%	0.46	0	0.46	0.51	0	0.51	0.62	0	0.62	0.8	0	0.8	0.83	0	0.83	0.91	0	0.91	98%	0.96	0	0.96
Municipal	City of Tavares	18,326	20,789	22,017	22,653	23,486	25,349	38%	2.59	0	2.59	2.93	0	2.93	3.1	0	3.1	3.19	0	3.19	3.31	0	3.31	3.57	0	3.57	38%	3.78	0	3.78
Municipal	Town of Lady Lake	5,688	6,863	8,056	8,304	10,081	10,746	89%	0.7	0	0.7	0.86	0	0.86	1.01	0	1.01	1.04	0	1.04	1.26	0	1.26	1.34	0	1.34	91%	1.42	0	1.42
Municipal	City of Mount Dora	23,718	27,538	29,033	30,750	33,151	35,371	49%	4.82	0	4.82	2.99	1	3.99	3.21	1	4.21	3.46	1	4.46	3.81	1	4.81	4.13	1	5.13	6%	4.44	1	5.44
Municipal	City of Mascotte	4,825	8,148	9,291	10,401	11,532	12,651	162%	0.36	0	0.36	0.62	0	0.62	0.71	0	0.71	0.79	0	0.79	0.88	0	0.88	0.96	0	0.96	167%	1.02	0	1.02
Municipal	City of Clermont	33,914	42,630	47,582	51,031	52,273	53,459	58%	5.44	0	5.44	7.33	0	7.33	8.18	0	8.18	8.78	0	8.78	8.99	0	8.99	9.19	0	9.19	69%	9.74	0	9.74
Municipal	Town of Montverde	2,275	2,590	2,711	2,822	2,915	3,014	32%	0.19	0	0.19	0.22	0	0.22	0.23	0	0.23	0.24	0	0.24	0.24	0	0.24	0.25	0	0.25	32%	0.27	0	0.27
Municipal	City of Groveland	16,315	19,660	21,808	23,890	26,008	28,085	72%	2.34	0	2.34	2.38	0	2.38	2.64	0	2.64	2.89	0	2.89	3.15	0	3.15	3.4	0	3.4	45%	3.6	0	3.6
Municipal	City of Minneola	13,453	15,809	17,789	19,666	21,498	23,267	73%	1.65	0	1.65	1.91	0	1.91	2.15	0	2.15	2.38	0	2.38	2.6	0	2.6	2.82	0	2.82	71%	2.99	0	2.99
<b>Total All Municipalities</b>		<b>188,311</b>	<b>225,819</b>	<b>250,354</b>	<b>269,516</b>	<b>290,347</b>	<b>310,821</b>	<b>65%</b>	<b>28.31</b>	<b>0</b>	<b>28.3</b>	<b>32.01</b>	<b>1</b>	<b>33</b>	<b>35.63</b>	<b>1</b>	<b>36.6</b>	<b>38.47</b>	<b>1</b>	<b>39.5</b>	<b>41.49</b>	<b>1</b>	<b>42.49</b>	<b>44.48</b>	<b>1</b>	<b>45.5</b>	<b>61%</b>	<b>47.21</b>	<b>1</b>	<b>48.21</b>

Sources: Central Springs / East Coast (CSEC) RWSP [SJRWMD], Central Florida Water Initiative (CFWI) RWSP [SJRWMD]

Notes: Water Use and Demand Projections shown in million gallons per day (mgd).





## Summary of Ordinance

This purpose of this Ordinance is to revise the 10-Year Water Supply Facilities Work Plan. The Ordinance will amend various provisions of the Lake County 2030 Comprehensive Plan including Chapter VI, Intergovernmental Coordination Element, Chapter IX, the Public Facilities Element Plan to comply with the requirements of Section 163.3177, Florida Statutes, and Chapter 373, Florida Statutes.

Changes are shown as follows: ~~Strikethrough~~ for deletions and Underline for additions to existing Code sections. The notation “\* \* \*” shall mean that all preceding or subsequent text remains unchanged (excluding any renumbering or relettering that might be needed).

1

2

### ORDINANCE 2025 - \_\_\_\_\_

3

#### LAKE COUNTY WATER SUPPLY FACILITIES WORK PLAN

4

**AN ORDINANCE OF THE BOARD OF COUNTY COMMISSIONERS OF LAKE COUNTY, FLORIDA; REVISE THE 10-YEAR WATER SUPPLY FACILITIES WORK PLAN; AMENDING THE COMPREHENSIVE PLAN TO ESTABLISH THE WATER SUPPLY FACILITIES WORK PLAN AS APPENDIX “A” WITHIN THE PUBLIC FACILITIES ELEMENT; REVISE SUCH PROVISION TO BE CONSISTENT WITH SECTION 163.3177 AND CHAPTER 373, FLORIDA STATUTES; AMENDING POLICY VI-1.3.1 ENTITLED JOINT STRATEGIES FOR WATER SUPPLIES; AMENDING POLICY VI-1.3.2 ENTITLED DISTRICT WATER SUPPLY PLANS; AMENDING POLICY VI-1.3.3 ENTITLED PARTICIPATION WITH WATER MANAGEMENT DISTRICTS’ WATER SUPPLY PLANNING; AMENDING POLICY VI-1.6.9 ENTITLED COORDINATION OF POTABLE WATER SERVICES WITH THE UTILITY PROVIDERS; AMENDING POLICY VI-1.6.10 ENTITLED COORDINATION WITH OTHER AGENCIES FOR PROTECTING WATER SUPPLIES; AMENDING POLICY VI-1.6.13 ENTITLED COORDINATION OF WASTEWATER SERVICES WITH THE UTILITY PROVIDERS; AMENDING POLICY IX-2.1.8 ENTITLED COORDINATION WITH OTHER AGENCIES; PROVIDING FOR PUBLICATION AS REQUIRED BY SECTION 163.3184(11), FLORIDA STATUTES; PROVIDING FOR SEVERABILITY; AND PROVIDING FOR AN EFFECTIVE DATE.**

18

**WHEREAS**, Chapter 163, Florida Statutes, Part II, governs growth policy, county and municipal planning, and land development regulation in the State of Florida; and

19

20

**WHEREAS**, Chapter 125, Florida Statutes, Section 125.01(1)(g), authorizes the Board of County Commissioners of Lake County to “prepare and enforce comprehensive plans for the development of the county”; and

21

22

23

**WHEREAS**, pursuant to Chapters 163 and 125, Florida Statutes, on the 25th day of May 2010, the Board of County Commissioners enacted Ordinance No. 2010-25, adopting the Lake County 2030 Comprehensive Plan; and

24

25

26

**WHEREAS**, on the 23rd day of July 2010, the State of Florida Department of Community Affairs, now known as the Bureau of Community Planning and Growth, Florida Department of Commerce, published a Notice of Intent finding the Lake County 2030 Comprehensive Plan Amendment "In Compliance" with Chapter 163, Florida Statutes; and

27

28

29

1           **WHEREAS**, on the 22nd day of September 2011, the Lake County 2030 Comprehensive Plan  
2 became effective; and

3           **WHEREAS**, Section 163.3184, Florida Statutes, sets forth the process for adoption of  
4 Comprehensive Plan Amendments; and

5           **WHEREAS**, on the 5th day of February 2024, this Ordinance was heard at a public hearing before  
6 the Lake County Planning & Zoning Board in its capacity as the Local Planning Agency; and

7           **WHEREAS**, on the \_\_\_ day of \_\_\_\_\_ 2025, this Ordinance was heard at a public hearing  
8 before the Lake County Board of County Commissioners for approval to transmit to the state planning agency  
9 and other reviewing agencies; and

10           **WHEREAS**, on the \_\_\_ day of \_\_\_\_\_ 2025, this Ordinance was heard at a public hearing before  
11 the Lake County Board of County Commissioners for adoption; and

12           **WHEREAS**, it serves the health, safety, and general welfare of the residents of Lake County to adopt  
13 the amendment to the Lake County Comprehensive Plan and amend the Future Land Use Map.

14           **NOW THEREFORE, BE IT ORDAINED** by the Board of County Commissioners of Lake County,  
15 Florida, that:

16           **Section 1.     Legislative Findings of Fact.** The foregoing recitals are hereby adopted as  
17 legislative findings of the Board of County Commissioners and are ratified and confirmed as being true and  
18 correct and are hereby made a specific part of this Ordinance upon adoption hereof.

19  
20           **Section 2.     Comprehensive Plan Text Amendment.** Appendix A, to be entitled *2040 Water*  
21 *Supply Facilities Work Plan*, shall be added to Chapter IX of the Lake County 2030 Comprehensive Plan,  
22 entitled *Public Facilities Element*. The 2040 Water Supply Facilities Work Plan is incorporated herein and  
23 attached hereto by reference as **Exhibit "A"**.

24  
25           **Section 3.     Comprehensive Plan Text Amendment.** The Lake County 2030 Comprehensive  
26 Plan, Intergovernmental Coordination Element, Policy VI-1.3.1 entitled *Joint Strategies for Water Supplies*,  
27 shall be amended to read as follows:

28  
29           **Policy VI-1.3.1 Joint Strategies for Water Supplies**

30           The County shall, through its participation in the Regional Water Supply Planning Programs of the St. Johns  
31 River and Southwest Florida Water Management Districts, propose joint strategies for protection of water  
32 resources through water supply planning. The County shall consider ~~incorporating the data and analyses of~~  
33 ~~information from~~ the Water Supply Facilities Work Plans of the municipalities and the St. Johns River and  
34 Southwest Florida Water Management District's regional water supply plans ~~inteduring~~ future updates of its  
35 Water Supply Facilities Work Plan.

36  
37           **Section 4.     Comprehensive Plan Text Amendment.** The Lake County 2030 Comprehensive  
38 Plan, Intergovernmental Coordination Element, Policy VI-1.3.2 entitled *District Water Supply Plans*, shall be  
39 amended to read as follows:

1 **Policy VI-1.3.2 ~~District~~Regional Water Supply Plans**

2 The County will maintain a water supply facilities work plan that is coordinated with ~~St. Johns River Water~~  
3 ~~Management District's (SJRWMD's) District Water Supply Plan~~ the St. Johns River and Southwest Florida  
4 Water Management District's regional water supply plans by updating the work plan and related  
5 Comprehensive Plan policies within 18 months of an update to ~~the SJRWMD's District Water Supply Plan a~~  
6 regional water supply plan that affects the County, as required by Florida Statutes. The water supply facilities  
7 work plan shall identify the water conservation and reuse practices, along with any traditional and alternative  
8 water supply projects and programs (if any), necessary to meet existing and future water demands.

9  
10 **Section 5. Comprehensive Plan Text Amendment.** The Lake County 2030 Comprehensive  
11 Plan, Intergovernmental Coordination Element, Policy VI-1.3.3 entitled *Participation with Water Management*  
12 *Districts' Water Supply Planning*, shall be amended to read as follows:

13  
14 **Policy VI-1.3.3 Participation with Water Management Districts' Water Supply Planning**

15 The County will participate in the development of updates to the Southwest Florida and the St. Johns River  
16 Water Management District's water supply assessment and ~~District~~Regional Water Supply Plans.

17  
18 **Section 6. Comprehensive Plan Text Amendment.** The Lake County 2030 Comprehensive  
19 Plan, Intergovernmental Coordination Element, Policy VI-1.6.9 entitled *Coordination of Potable Water*  
20 *Services with the Utility Providers*, shall be amended to read as follows:

21  
22 **Policy VI-1.6.9 Coordination of Potable Water Services with the Utility Providers**

23 ~~Within 12 months of the adoption of the Comprehensive Plan,~~ Lake County shall pursue and maintain  
24 Interlocal Agreements with ~~the~~ municipalities that supply utilities within Lake County for establishing service  
25 areas so as not to duplicate services and to provide for conditions for the establishment of, and the operation  
26 within, the service area. ~~Within 12 months of the adoption of this Comprehensive Plan,~~ Lake County shall  
27 pursue and maintain written agreements defining the relationship with all privately-owned water suppliers  
28 who provide water to unincorporated Lake County.

29  
30 **Section 7. Comprehensive Plan Text Amendment.** The Lake County 2030 Comprehensive  
31 Plan, Intergovernmental Coordination Element, Policy VI-1.6.9 entitled *Coordination of Potable Water*  
32 *Services with the Utility Providers*, shall be amended to read as follows:

33  
34 **Policy VI-1.6.10 Coordination with Other Agencies for Protecting Water Supplies**

35 Lake County shall work closely with the federal, state, regional and local agencies to ensure all possible  
36 alternatives, acceptable to the County, are explored and implemented with respect to new development and  
37 water conservation. This may include:

- 38
- Define expansion areas in Lake County where central water service is anticipated;

- 1 • Require the use of reuse water for landscape irrigation wherever possible, unless other lower quality  
2 water sources are authorized by the St. Johns River Water Management District and/or Southwest  
3 Florida Water Management District pursuant to Part II of Chapter 373, F.S.;
- 4 • Promote and facilitate Joint Planning Area agreements between municipalities, and between the  
5 County and municipalities;
- 6 • Consider exploring alternative water supply options;
- 7 • Look for opportunities to capitalize on economies of scale;
- 8 • Pursue or support grant matching funding, participation, subsidized loans, and low-cost loan  
9 programs for environmental, water resource, and public welfare projects in Lake County;
- 10 • Assist entities with “seed” money grants for beneficial projects or develop another cooperative  
11 approach;
- 12 • Facilitate regional programs for Lake County entities;
- 13 • Create Special Water Districts in cooperation with municipalities and regulatory agencies;
- 14 • Develop Water Resource Cooperation and Support Agreements through the JPA process;
- 15 • Participate in regional water supply planning with municipalities and regulatory agencies;
- 16 • Promote conservation through education, incentives, and regulation;
- 17 • Encourage phasing-out septic systems where appropriate;
- 18 • Develop incentives to connect to central water and wastewater systems; and
- 19 • Participate with the Water Management Districts in the development of District Water Management  
20 Plans, Water Supply Assessments, and DistrictRegional Water Supply Plans.

21  
22 **Section 8. Comprehensive Plan Text Amendment.** The Lake County 2030 Comprehensive  
23 Plan, Intergovernmental Coordination Element, Policy VI-1.6.13 entitled *Coordination of Wastewater*  
24 *Services with the Utility Providers*, shall be amended to read as follows:

25 **Policy VI-1.6.13 Coordination of Wastewater Services with the Utility Providers**

26 ~~Within 12 months of the adoption of this Comprehensive Plan,~~ Lake County shall pursue and maintain  
27 Interlocal Agreements with municipalities providing wastewater utility services within unincorporated areas of  
28 Lake County. These Interlocal Agreements will establish service area boundaries ~~so as~~ to prevent or  
29 eliminate duplicative service areas and provide conditions for establishment and operation within the service  
30 areas. ~~Within 12 months of the adoption of this Comprehensive Plan,~~ Lake County shall pursue and maintain  
31 written agreements defining the relationship with all privately-owned water suppliers who provide water to  
32 unincorporated Lake County.

33  
34 **Section 9. Comprehensive Plan Text Amendment.** The Lake County 2030 Comprehensive  
35 Plan, Public Facilities Element, Policy IX-2.1.8 entitled *Coordination with Other Agencies*, shall be amended  
36 to read as follows:

1 **Policy IX-2.1.8 entitled Coordination with Other Agencies**

2 Lake County shall work closely with federal, state, regional and local agencies to ensure all possible  
3 alternatives are explored and implemented with respect to new development and water conservation. This  
4 can include:

- 5 • Define areas in Lake County where central potable water service is anticipated;
- 6 • Require the use of reuse water for landscape irrigation wherever possible, unless other low quality  
7 water sources are authorized by the St. Johns River Water Management District and/or Southwest  
8 Florida Water Management District pursuant to ~~P~~part II of Chapter 373, F.S.;
- 9 • Promote and facilitate Joint Planning Area Agreements between municipalities, and between the  
10 County and municipalities;
- 11 • Consider exploring alternative water supply options;
- 12 • Look for opportunities to capitalize on economies of scale;
- 13 • Pursue or support grant matching funding, participation, subsidized loans, and low-cost loan  
14 programs for environmental, water resource, and public welfare projects in Lake County;
- 15 • Assist entities with “seed” money grants for beneficial projects or develop another cooperative  
16 approach;
- 17 • Facilitate regional programs for Lake County entities;
- 18 • Create Special Water Districts in cooperation with municipalities and regulatory agencies;
- 19 • Develop Water Resource Cooperation and Support Agreements through the JPA process;
- 20 • Participate in regional water supply planning with municipalities and regulatory agencies;
- 21 • Promote conservation through education, incentives, and regulation;
- 22 • Encourage phasing-out septic systems where appropriate;
- 23 • Develop incentives to connect to central water and wastewater systems; and
- 24 • Participate with the Water Management Districts in the development of District Water Management  
25 Plans, Water Supply Assessments, and ~~District~~Regional Water Supply Plans.

26  
27 **Section 10. Advertisement.** This Ordinance was advertised pursuant to Sections 125.66 and  
28 163.3184, Florida Statutes.

29 **Section 11. Severability.** If any section, sentence, clause, phrase or word of this Ordinance is for  
30 any reason held or declared to be unconstitutional, inoperative or void, such holding or invalidity shall not  
31 affect the remaining portions of this Ordinance; and it shall be construed to have been the Commissioners’  
32 intent to pass this Ordinance without such unconstitutional, invalid or inoperative part therein; and the  
33 remainder of this Ordinance, after the exclusion of such part or parts shall be deemed and held to be valid,  
34 as if such parts had not been included herein; or if this Ordinance or any provisions thereof shall be held  
35 inapplicable to any person, groups of persons, property, kind of property, circumstances or set of  
36 circumstances, such holding shall not affect the applicability thereof to any other person, property or  
37 circumstances.

1           **Section 12. Effective Date.** The effective date of this plan amendment, if the amendment is not  
2 timely challenged, shall be 31 days after the state land planning agency notifies the local government that  
3 the plan amendment package is complete. If timely challenged, this amendment shall become effective on  
4 the date the state land planning agency, or the Administration Commission enters a final order determining  
5 this adopted amendment to be in compliance. No development orders, development permits, or land uses  
6 dependent on this amendment may be issued or commence before it has become effective. If a final order  
7 of noncompliance is issued by the Administration Commission, this amendment may nevertheless be made  
8 effective by adoption of a resolution affirming its effective status, a copy of which resolution shall be sent to  
9 the state land planning agency.

10           **ENACTED this \_\_\_\_ day of \_\_\_\_\_, 2025.**

11           **FILED with the Secretary of State \_\_\_\_\_, 2025.**

12

13

14

15

16

17

18

**BOARD OF COUNTY COMMISSIONERS  
LAKE COUNTY, FLORIDA**

\_\_\_\_\_  
**Leslie Campione, Chairman**

19 **ATTEST:**

20

21

22

\_\_\_\_\_  
**Gary J. Cooney, Clerk  
Board of County Commissioners of  
Lake County, Florida**

26

27 **Approved as to form and legality:**

28

29

30

\_\_\_\_\_  
**Melanie Marsh, County Attorney**

31