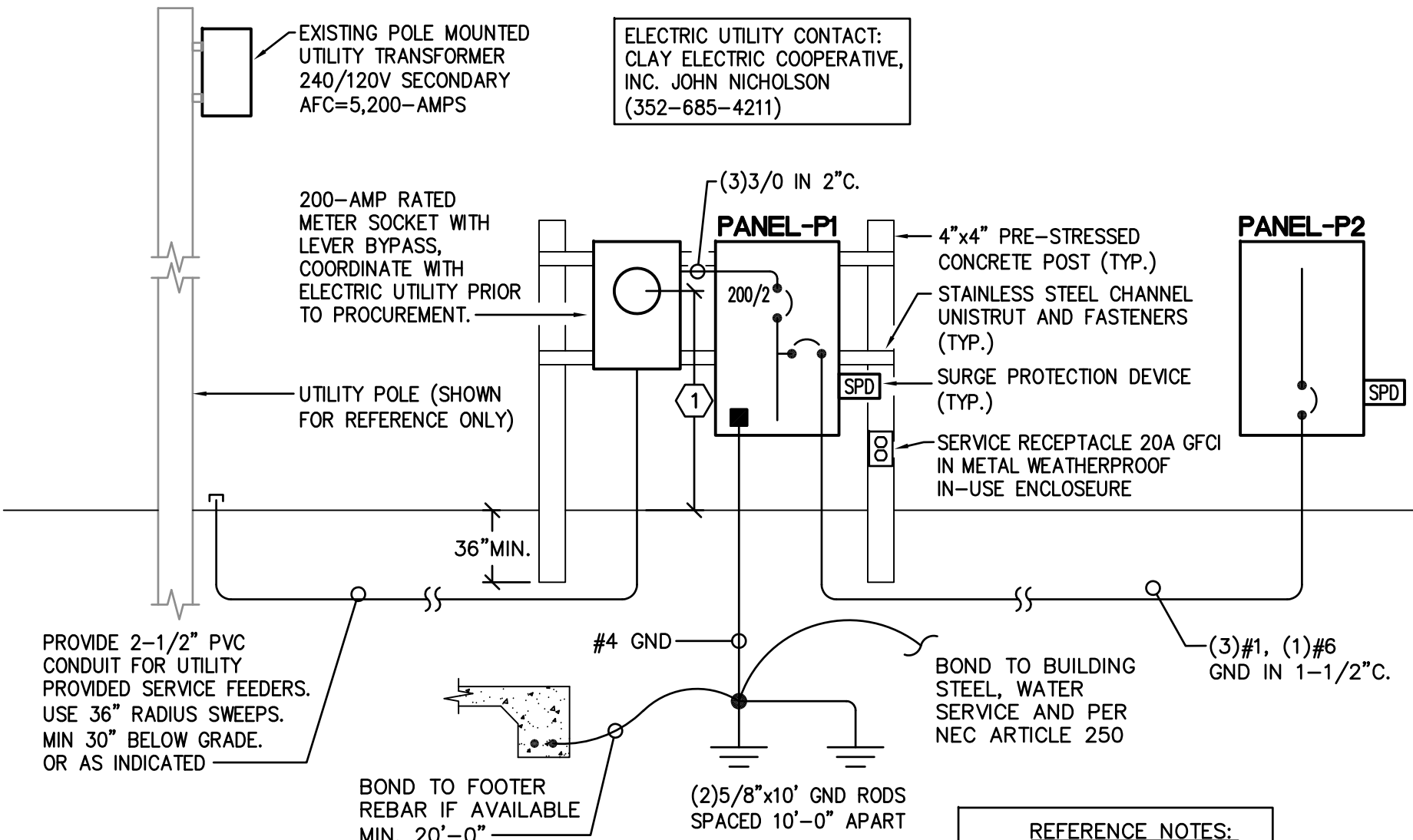


LIGHT FIXTURE SCHEDULE									
Mark	Lamp Data		Fixture Description	Fixture Data			Voltage	Notes	
	No.	Type		Manufacturer	Catalog Number	Mount			
S1	1	LED (102W)	POLE MOUNTED LED AREA LIGHT FIXTURE 25'-0" AFG WITH TYPE-4 DISTRIBUTION AND BIRD SPIKES	LITHONIA	DSX1-LED-P3-30K-T4M-MVOLT-SPA BS-DDBXD	POLE	120	1	
S2	1	LED (102W)	POLE MOUNTED LED AREA LIGHT FIXTURE 25'-0" AFG TYPE-4 DISTRIBUTION WITH HOUSE SIDE SHIELD AND BIRD SPIKES	LITHONIA	DSX1-LED-P3-30K-T4M-MVOLT-SPA HS-BS-DDBXD	POLE	120	1	
S3	1	LED (102W)	POLE MOUNTED LED AREA LIGHT FIXTURE 25'-0" AFG WITH TYPE-5 DISTRIBUTION AND BIRD SPIKES	LITHONIA	DSX1-LED-P3-30K-T5W-MVOLT-SPA BS-DDBXD	POLE	120	1	
LIGHTING FIXTURE GENERAL NOTES: A. PROJECT MUST BE BID AS SPECIFIED. ANY ALTERNATE TO THE BASE (AS SPECIFIED) BID MUST BE ACCOMPANIED BY A CREDIT TO THE OWNER WHICH WILL BE EVALUATED BY THE SPECIFIER. B. CONTRACTOR SHALL PROVIDE ALL REQUIRED FIXTURE MOUNTING HARDWARE. LIGHTING FIXTURE REFERENCE NOTE: 1. UL LISTED, WET LOCATION RATED FIXTURE.									

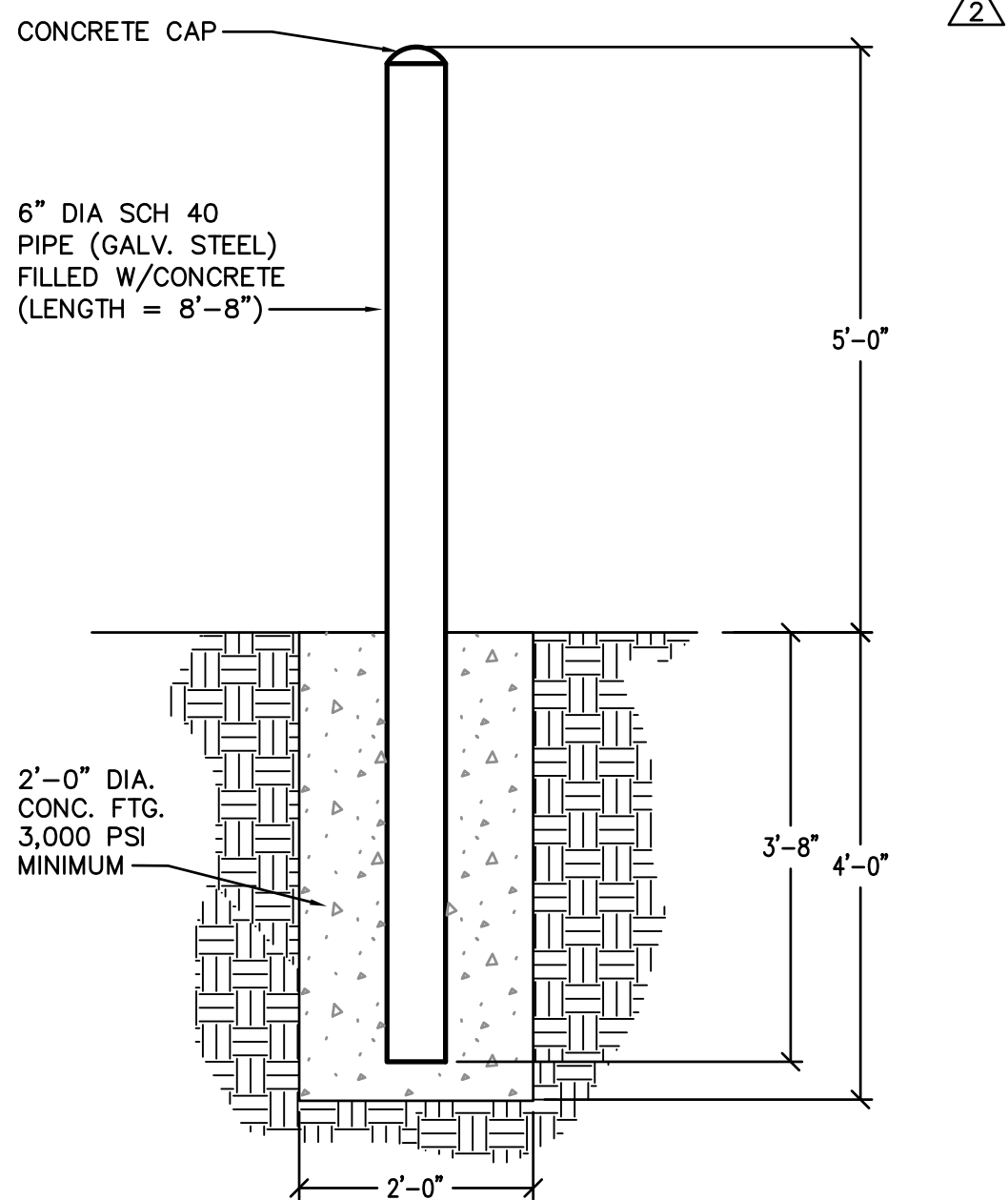
DRAWING INDEX	
E1	LEGEND, SCHEDULES AND DETAILS - ELECTRICAL
E2	DEMOLITION/EXISTING SITE PLAN - ELECTRICAL
E3	RENOVATION/NEW SITE PLAN - ELECTRICAL
E4	SITE PLAN - LIGHTING PHOTOMETRICS
E5	SPECIFICATIONS - ELECTRICAL

PANEL DESIGNATION: P1			VOLTAGE: 240/120			MAIN: 200A MCB			AIC RATING: 10.0K			AMPS			BASIS OF DESIGN: SQUARE-D LOAD CTR.			
LOCATION: EAST SIDE OF BUTLER ST.			ENCLOSURE: NEMA-3R			WIRING: 1-PHASE, 3W			AFC AT PANEL: 4.36K			AMPS						
FED FROM: UTILITY XFMR			MOUNTING: SURFACE			OPTIONS:			BUS RATING: 200			AMPS						
REF. NOTES	LOAD DESCRIPTION		KE LOAD	EQ LOAD	REC LOAD	LTG LOAD	CKT BKR	CKT No.	KVA PER PHASE A B	CKT No.	CKT BKR	LTG LOAD	REC LOAD	EQ LOAD	KE LOAD	LOAD DESCRIPTION	REF. NOTES	
	PANEL-P2 (BATHROOM BLDG)			9.20			100/2	1	9.38	2	20/1		0.18			SERVICE RECEPTACLE		
	-----			9.20			---	3	-----	4	20/1					SPARE		
	SPARE						20/1	5	0.00	6	20/1					SPARE		
	LIGHTING - BOAT RAMP					0.31	20/1	7	-----	8						SPACE		
	SPACE							9	0.00	10						SPACE		
	SPACE							11	-----	12						SPACE		
	SPACE							13	0.00	14						SPACE		
	SPACE							15	-----	16						SPACE		
	SPACE							17	0.00	18	30/2					SURGE PROTECTION DEVICE		
	SPACE							19	-----	20	--					-----		
SUB TOTAL DEMAND KVA					sf	VA/sf		SUB TOTALS, CONN KVA PER PHASE								L-L VOLTAGE		240.00
LTG	Actual x 125%	0.39	220.3(A)			2	0	PHASE-A		9.38					TOTAL CONN. KVA		18.89	
REC	NEC 220.13	0.18						PHASE-B		9.51					TOTAL DEMAND KVA		18.97	
KE	NEC 220.20	0.00	QTY. OF KE	0											DEMAND AMPS		79.03	
EQ	100%	18.40																

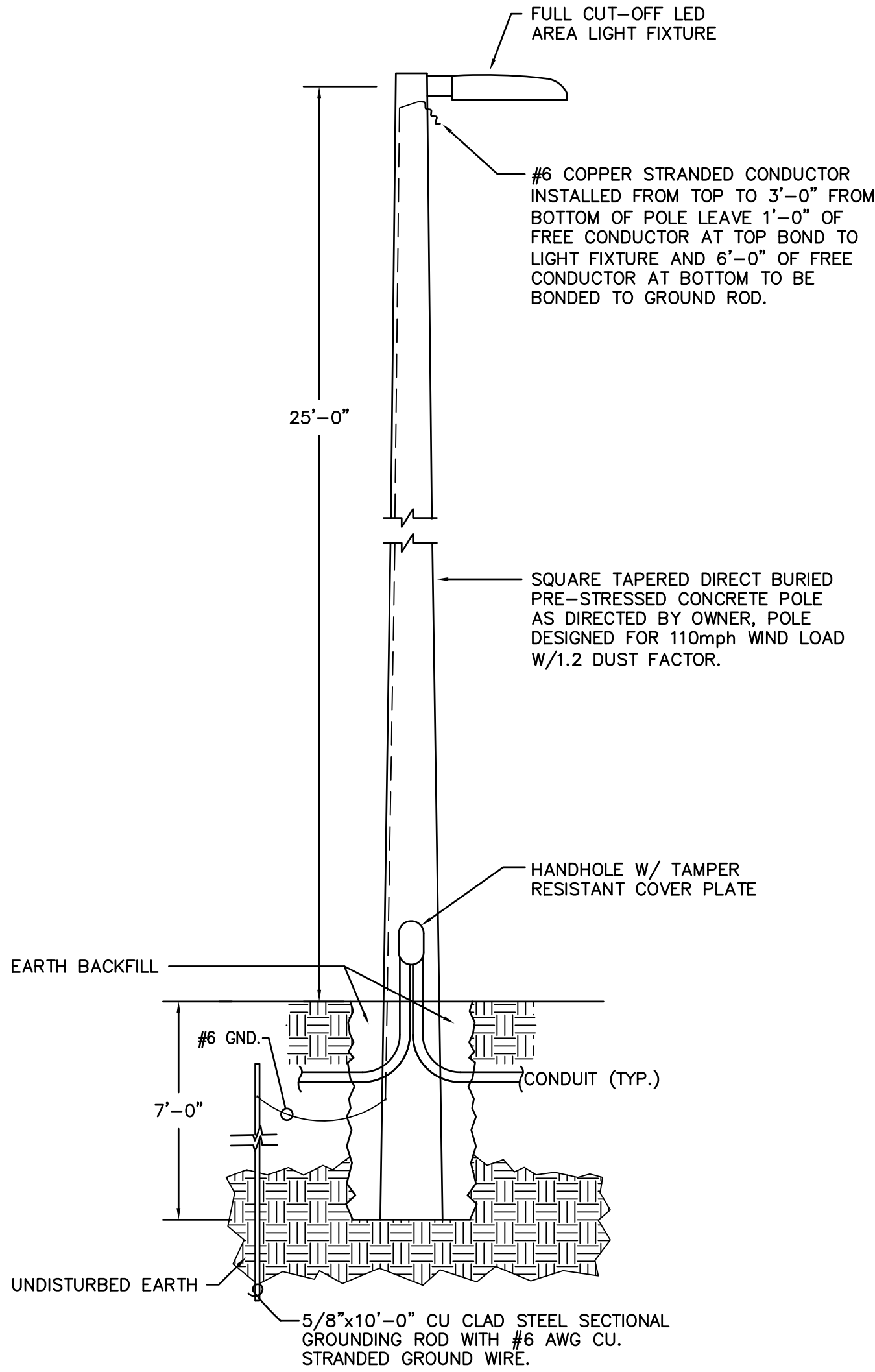
PANEL DESIGNATION: P2		VOLTAGE: 240/120		MAIN: 100A MCB		AIC RATING: 10.0K		AMPS		BASIS OF DESIGN: SQUARE-D LOAD CTR.							
LOCATION: EXTERIOR OF BATHROOM		ENCLOSURE: NEMA-3R		WIRING: 1-PHASE, 3W		AFC AT PANEL 1.95K		AMPS									
FED FROM: UTILITY XFMR		MOUNTING: SURFACE		OPTIONS:		BUS RATING: 125		AMPS									
REF. NOTES	LOAD DESCRIPTION	KE LOAD	EQ LOAD	REC LOAD	LTG LOAD	CKT BKR	CKT No.	KVA PER PHASE A	B	CKT No.	CKT BKR	LTG LOAD	REC LOAD	EQ LOAD	KE LOAD	LOAD DESCRIPTION	REF. NOTES
	BATHROOM BUILDING		5.76			60/2	1	8.64		2	30/2			2.88		GRINDER PUMP	
			5.76				3		8.64	4				2.88			
	LIGHTING - PARKING LOT				0.61	20/1	5	0.79		6	20/1		0.18			SERVICE RECEPTACLE	
	SPARE					20/1	7		0.00	8	20/1					SPARE	
	SPACE						9	0.00		10						SPACE	
	SPACE						11		0.00	12						SPACE	
	SPACE						13	0.00		14						SPACE	
	SPACE						15		0.00	16						SPACE	
	SPACE						17	0.00		18	30/2					SURGE PROTECTION DEVICE	
	SPACE						19		0.00	20	--					----	
SUB TOTAL DEMAND KVA				sf	VA/sf		SUB TOTALS, CONN KVA PER PHASE									L-L VOLTAGE	240.00
LTG	Actual x 125%	0.76	220.3(A)			2	0	PHASE-A		9.43					TOTAL CONN. KVA		18.07
REC	NEC 220.13	0.18						PHASE-B		8.64					TOTAL DEMAND KVA		18.22
KE	NEC 220.20	0.00	QTY. OF KE	0											DEMAND AMPS		75.93
EQ	100%	17.28															



1 E1 ONE-LINE DIAGRAM - POWER  
NOT TO SCALE



3 E1 BOLLARD DETAIL  
NOT TO SCALE



2 E1 POLE MOUNTING DETAIL  
NOT TO SCALE

THIS ITEM HAS BEEN DIGITALLY SIGNED AND SEALED BY WOOD T. BRAZILL, P.E. ON THE DATE ADJACENT TO THE SEAL.  
PRINTED COPIES OF THIS DOCUMENT ARE NOT CONSIDERED SIGNED AND SEALED AND THE SIGNATURE MUST BE VERIFIED ON ANY ELECTRONIC COPIES.

REVISION	DATE	BY	DESCRIPTION
1	10/03/2022	OWNER CHANGES	
2	12/02/2022	OWNER CHANGES	
3	2/09/2023	OWNER CHANGES	
4			
5			
6			
7			
8			
9			
10			

LAKE COUNTY, FLORIDA  
BUTLER ST. BOAT  
RAMP PARKING LOT  
IMPROVEMENT PLANS  
LEGEND, SCHEDULES AND  
DETAILS - ELECTRICAL

Electric Services, Inc.  
1746 US Highway 441 Leesburg, FL 34748  
P: 352-787-1322 F: 352-787-7871  
CA #9435 : EC #1415  
ESI Job #E2207.01

HALEFF  
902 North Sinclair Ave.  
Tallahassee, Florida 32304  
Office: 352.343.8481  
Fax: 352.343.8495  
Certificate of Authorization Number: 33980

DATE: MAY 2022  
DESIGNED BY: WTB  
DRAWN BY: JEN  
CHECKED BY: WTB  
JOB NO.: 043862.059  
FILE NAME: E2207.01\_E1  
Sheet E1

WOOD T. BRAZILL  
P.E.  
No 58563  
STATE OF FLORIDA  
Professional Engineer  
Registration No. 58563