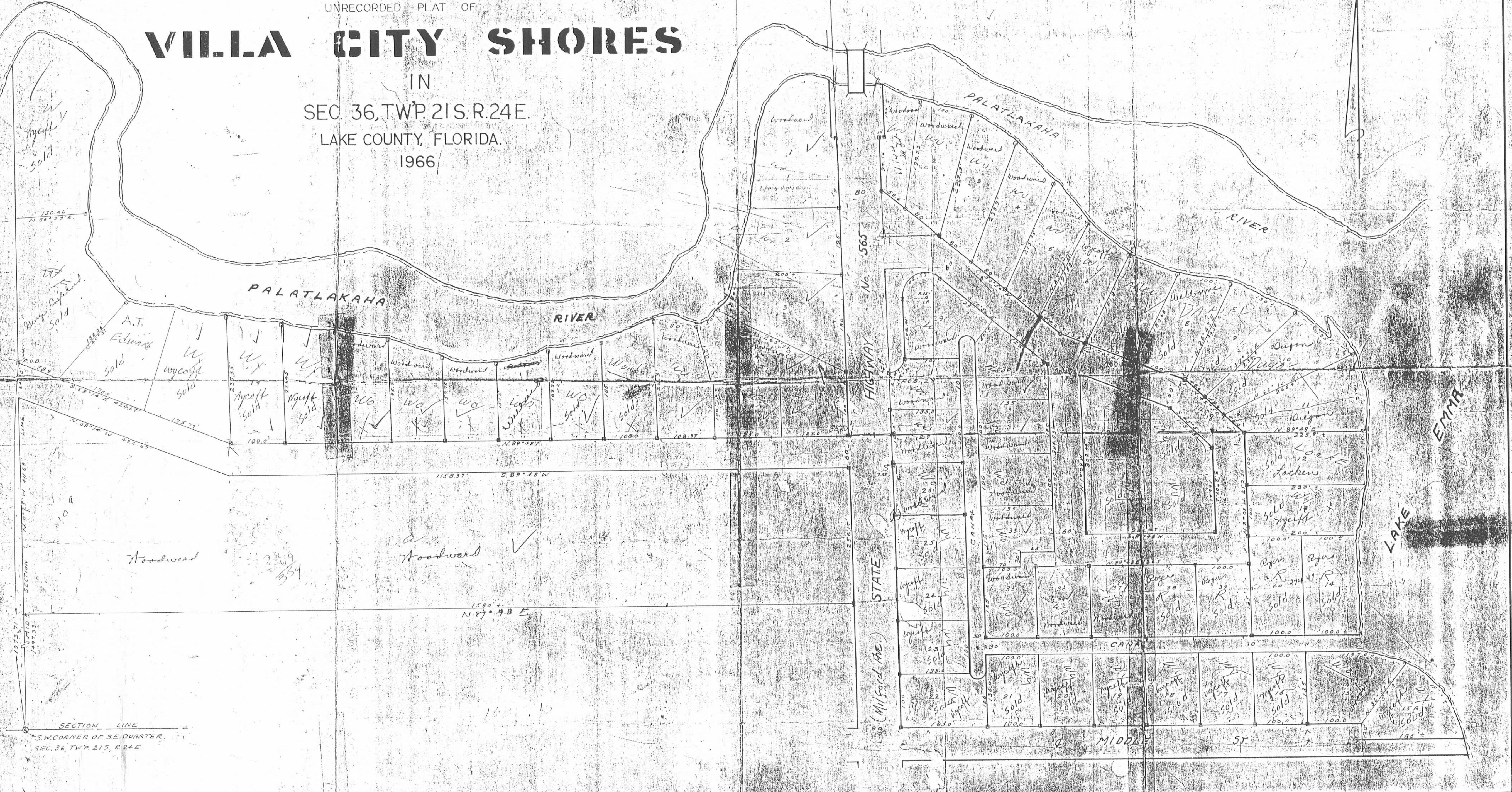


Thompson I W. [unclear]

11/20/66  
12/20/66  
1/20/67  
2/20/67  
3/20/67

# VILLA CITY SHORES

UNRECORDED PLAT OF  
IN  
SEC. 36, TWP. 21 S. R. 24 E.  
LAKE COUNTY, FLORIDA.  
1966



SECTION LINE  
S.W. CORNER OF S.E. QUARTER  
SEC. 36, TWP. 21 S. R. 24 E.