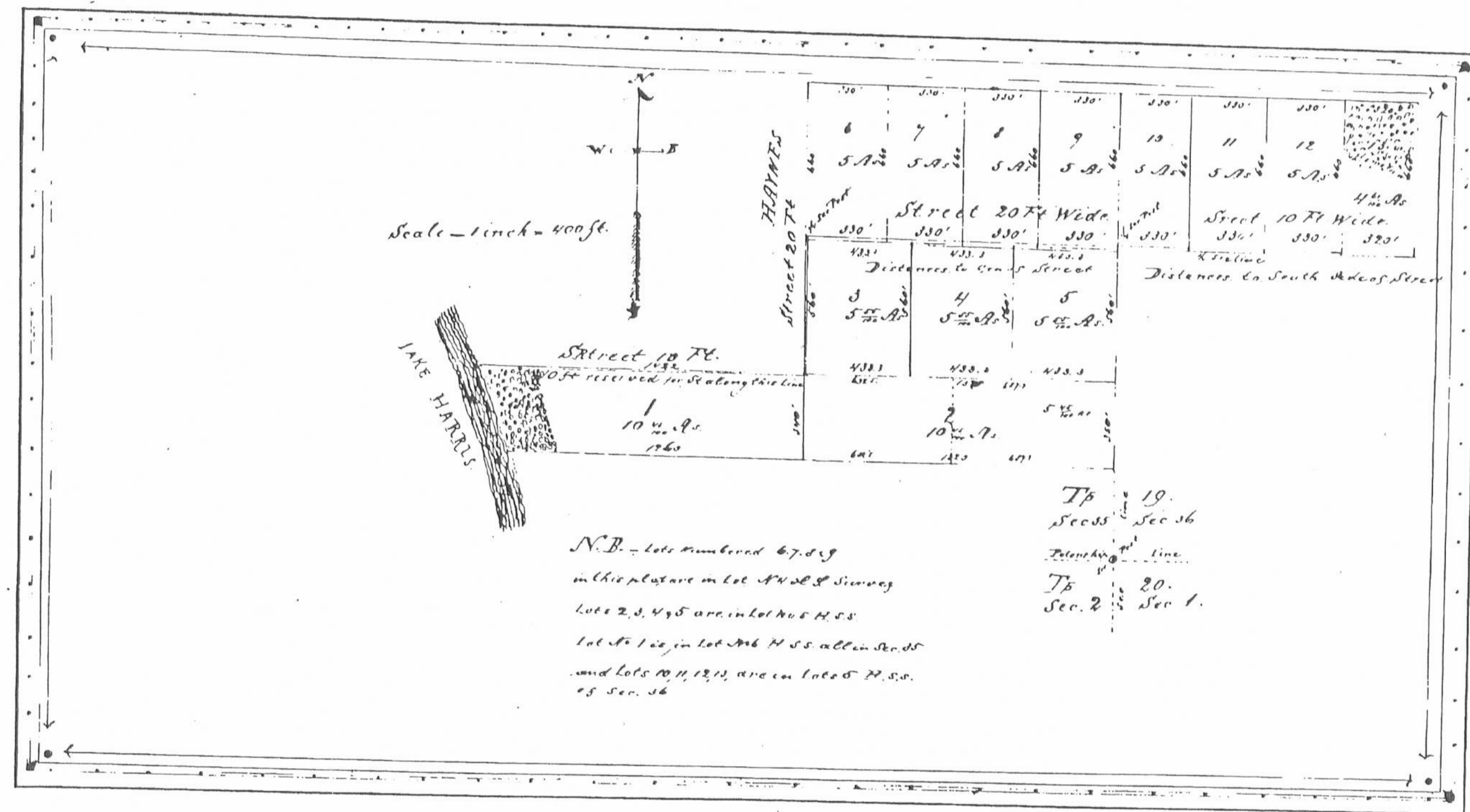


Webley

Plat Book 1 page 22

22



L.R.

Plat of the S.W. 1/4 of lot 4 of lot 5, sec. 26  
 the S.W. 1/4 of lot 11; the N.W. 1/4 of lot 3; and  
 of the S.W. 1/4 of lot 3; and part of the S.W. 1/4 of lot 6  
 in Section 25 1/2 T. 20 S. R. 20 E. Sec. 26, Co. 11th

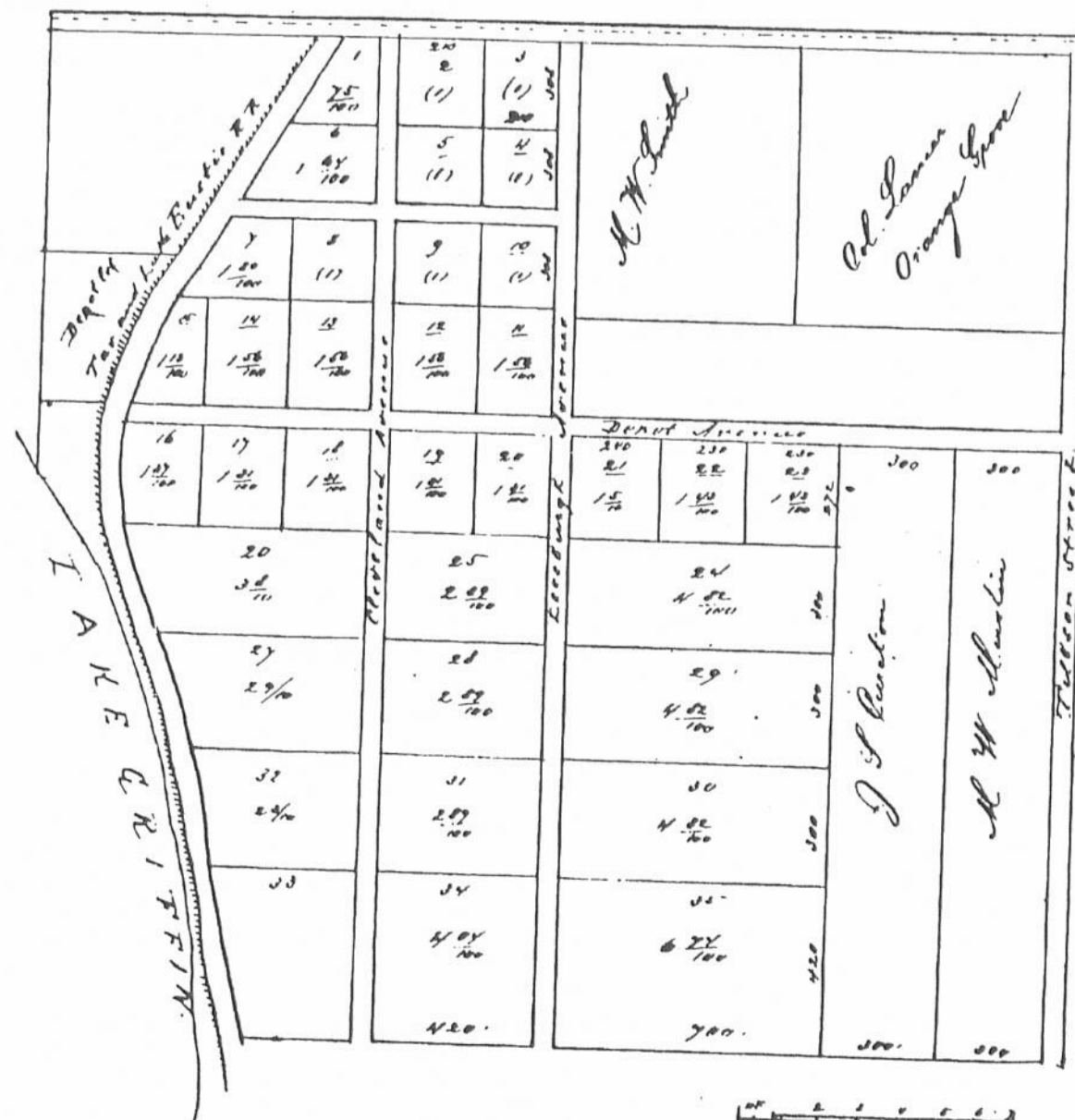
As subdivided for

Daniel Webley Esq.

March 11th 1885  
H. A. Livingston C.E.

Filed March 31st 1885. And recorded February 21st 1886  
 And I certify the foregoing to be a true and correct copy of original  
 © W. A. Webley  
 (Cont.)

THE INFANT TOWN OF FLORIDA  
 MAP OF ORANGE BEND.



ORANGE BEND SUBUR Co, Florida

Situated Five miles from Leesburg -  
 Offers Special Inducements of the new extension  
 of the Florida No. 10 the Sellers as follows  
 Southern Railway

Large bodies of the richest drained prairie land bordering Lake Griffin  
 best possible truck farming insuring great crops, and freedom from drought  
 The new town and station are situated on beautiful high prairie land, edge  
 among the great famous hammocks and well wooded orange groves which have  
 made this place a center of wealth and wealthy men  
 If you want a change to start a profitable business without the expense of buying  
 land or fat cows, advise

Col J C Lauer, Orange Bend Fla

L.R.

D

Filed April 9th 1886  
 And recorded April 10th 1886  
 And I certify the foregoing to be  
 a true and correct copy of original

Wm A. Webley, Clerk