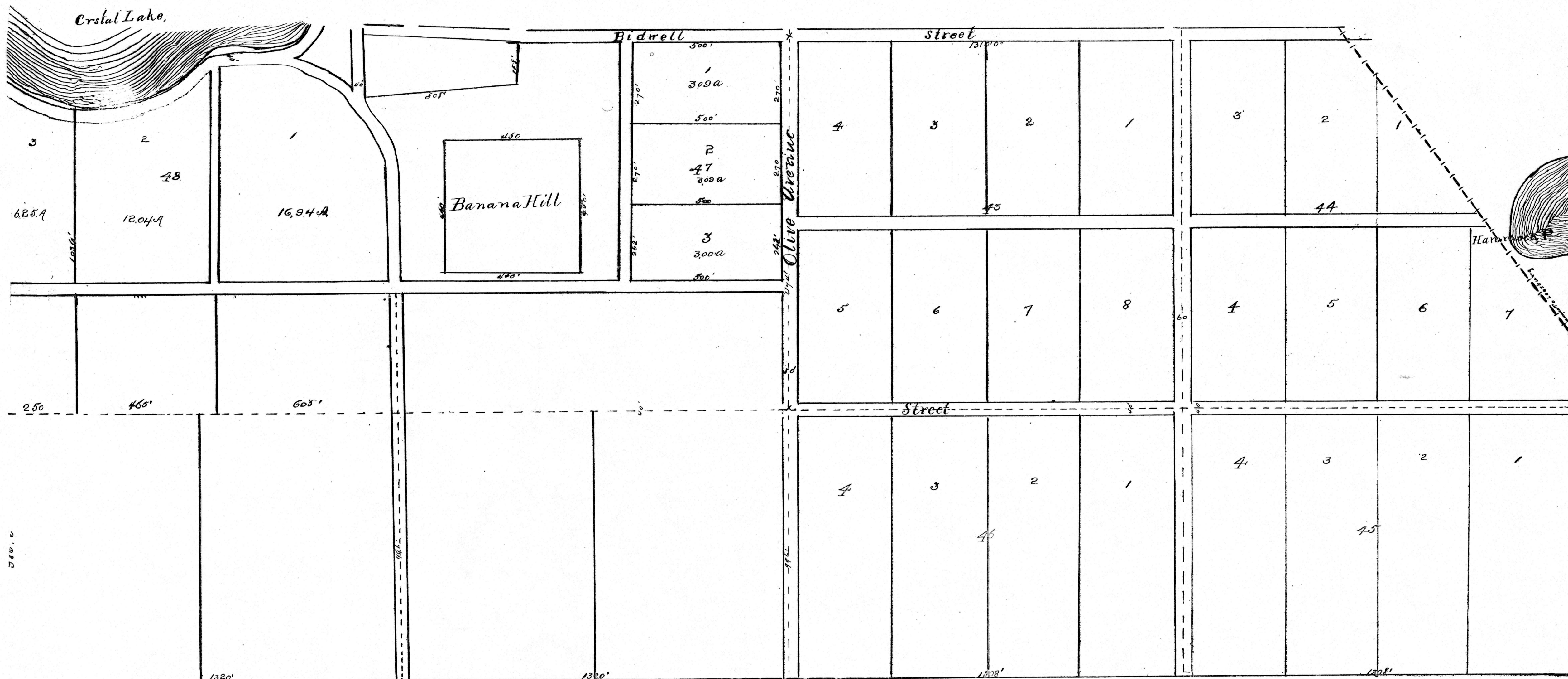


Plan of Fruitland Park; Concluded Next Page.

Plan of Fruitland Park Concluded

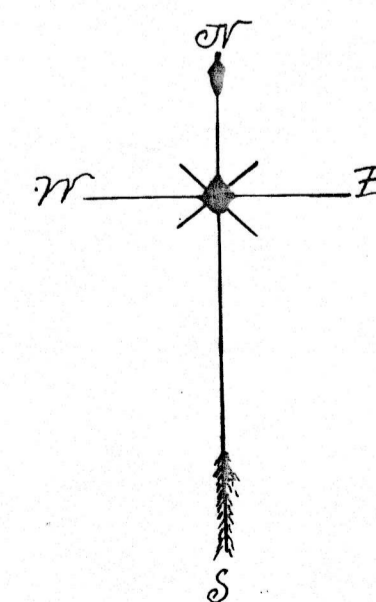


Sec. 9. T. 19. S. R 24 E.

State of Florida }
County of Sumter }

J. C. M. Knott, Clerk of the Circuit Court
of Sumter Co., do certify that the original of
the above plan was filed in my office of
Record the 7th day of Nov. 1885, and was duly
Recorded the 4th day of November 1885, and the
foregoing is a true copy of the Original
J. C. M. Knott

(Clerk
et. c.)



Large

Plan of
FRUITLAND PARK
Sumter Co.

Florida

Scale 200ft = 1 inch.
Wm. M. Husson Draughtsman.

A. J. Campbell
Engineer
May 1885.