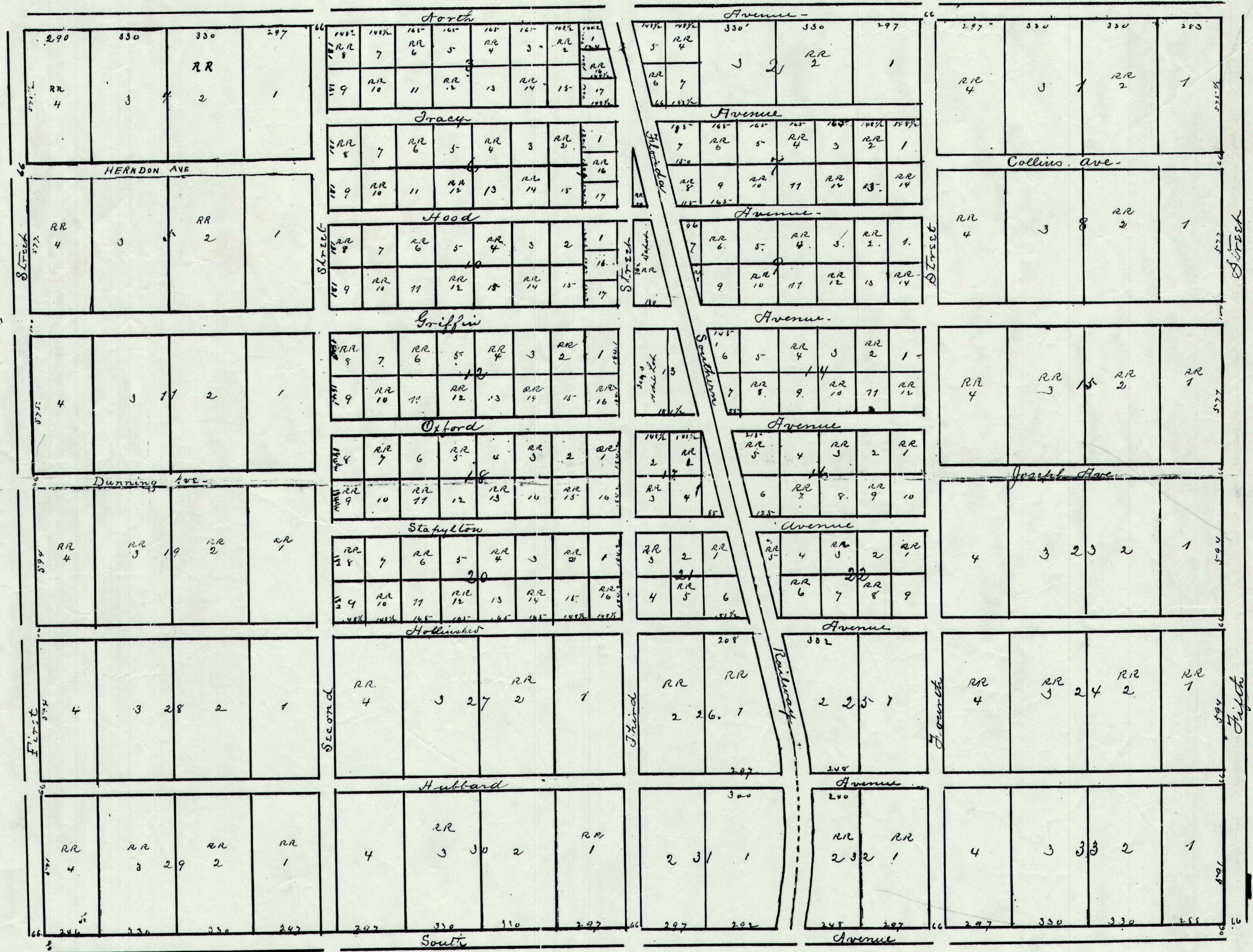


Conant
S. R. 24 E.
Section 8.

Line



Situated in
 South Section 8
 S. R. 24 E. T. 15 N. R. 24 E.
 and Section 9
 S. R. 24 E. T. 15 N. R. 24 E.
 and Section 10
 S. R. 24 E. T. 15 N. R. 24 E.

State of Florida
 County of Sumner I, J. C. McKeith, Clerk of the Circuit Court for the County of Sumner, do hereby certify that the
 above plat, was filed in my office for the record on the 13th August A. D. 1905. at 8 o'clock.
 A. W. and that same was duly recorded in the day, and further that the above is a correct copy of the original.
 J. C. McKeith Clerk
 By J. H. Wilson D. C.

The above Plat was originally filed by J. J. Long, Clerk. C. C. in the office on the 14th day of July 1884.

PUBLIC WORKS RECORDS MGMT
 ID # PCT
 CD #

Conant

#2