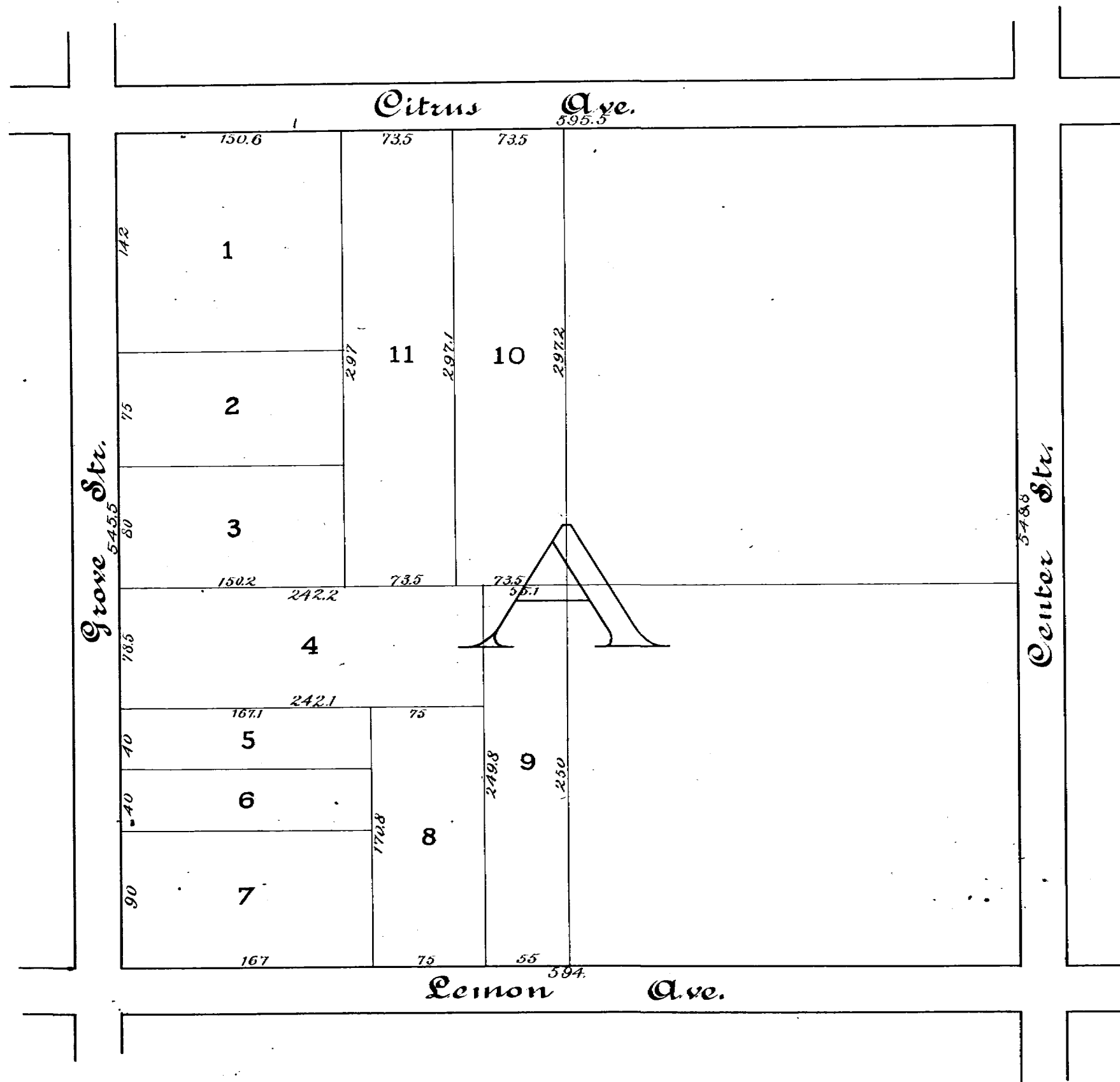


Subdivision of the West 1/2 of Block A, Pendry's Division of Eustis.

Scale - 80ft. to 1 in.

Surveyed by J.S. McDonald & Co.
Transcribed by Arthur C. Albrick.

Note: This subdivision lies in Sec. 11 - T. 19 S. - R. 26 E. - the N.E. corner of the subdivision being 142 rods South and 140 rods West of the N.E. corner of the Section.



*See the Record on this
 the 10th day of January A.D. 1886
 J. J. Fairie Clerk
 J. W. R. Hay S.C.*