

*J. O. Frice  
County Surveyor*

# N. J. TROWELL'S

ADDITION TO

## UMATILLA

Orange Co., Florida

T 18 S — Sec. 13 — R 26 E

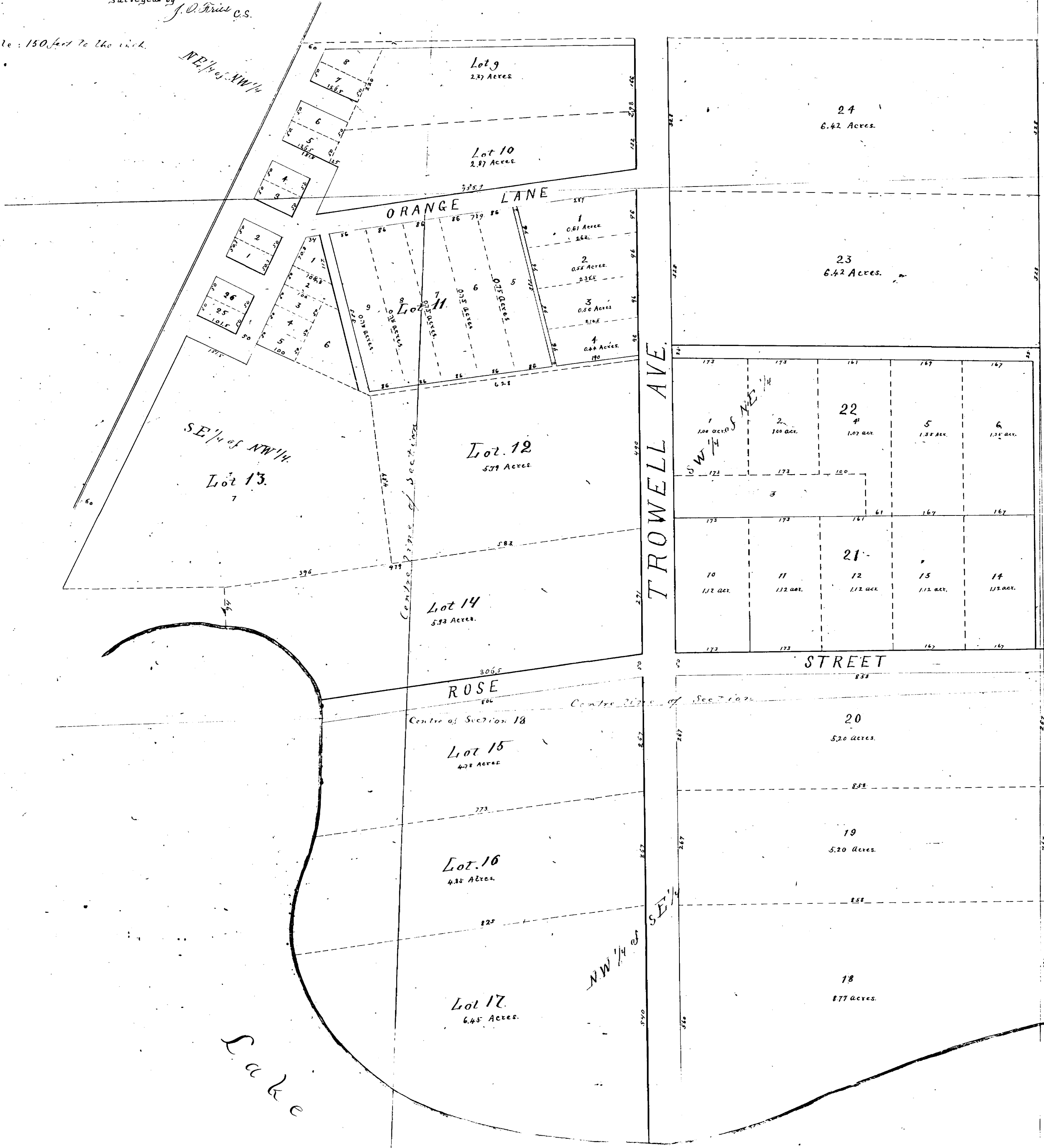
Surveyed by *J. O. Frice C.S.*

Scale: 150 feet to the inch.

NW 1/4 of SE 1/4

NE 1/4 of NW 1/4

SE 1/4 of NW 1/4



Being Parts of Lots 1 & 4

Sec. 13

T 18 S — R 26 E

Surveyed

1885

by *J. M. Owen & E. M. Whitney*

Survey Revised & Mapped by

*J. O. Frice  
County Surveyor*

Lake

Umatilla

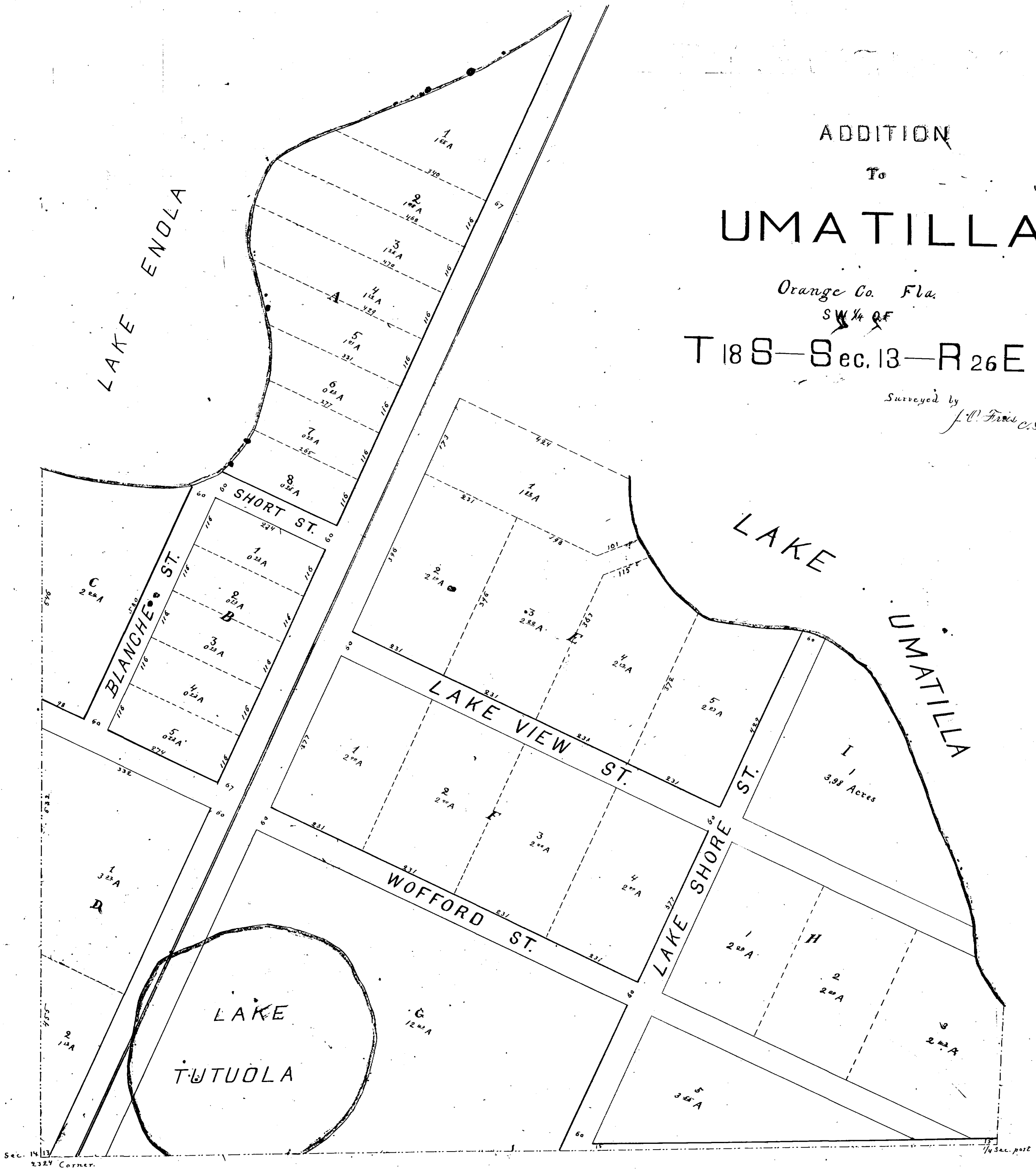
ADDITION  
To  
**UMATILLA**

Orange Co. Fla.

SW 1/4 QF

T 18 S - Sec. 13 - R 26 E

Surveyed by  
J. O. Fines C.S.



*Original*

Filed Nov. 10<sup>th</sup> 1885

J. O. Fines  
By W. S. May Jr. C.