

B. A. YANCEY'S

ADDITION TO

UMATILLA

Orange Co. Fla.

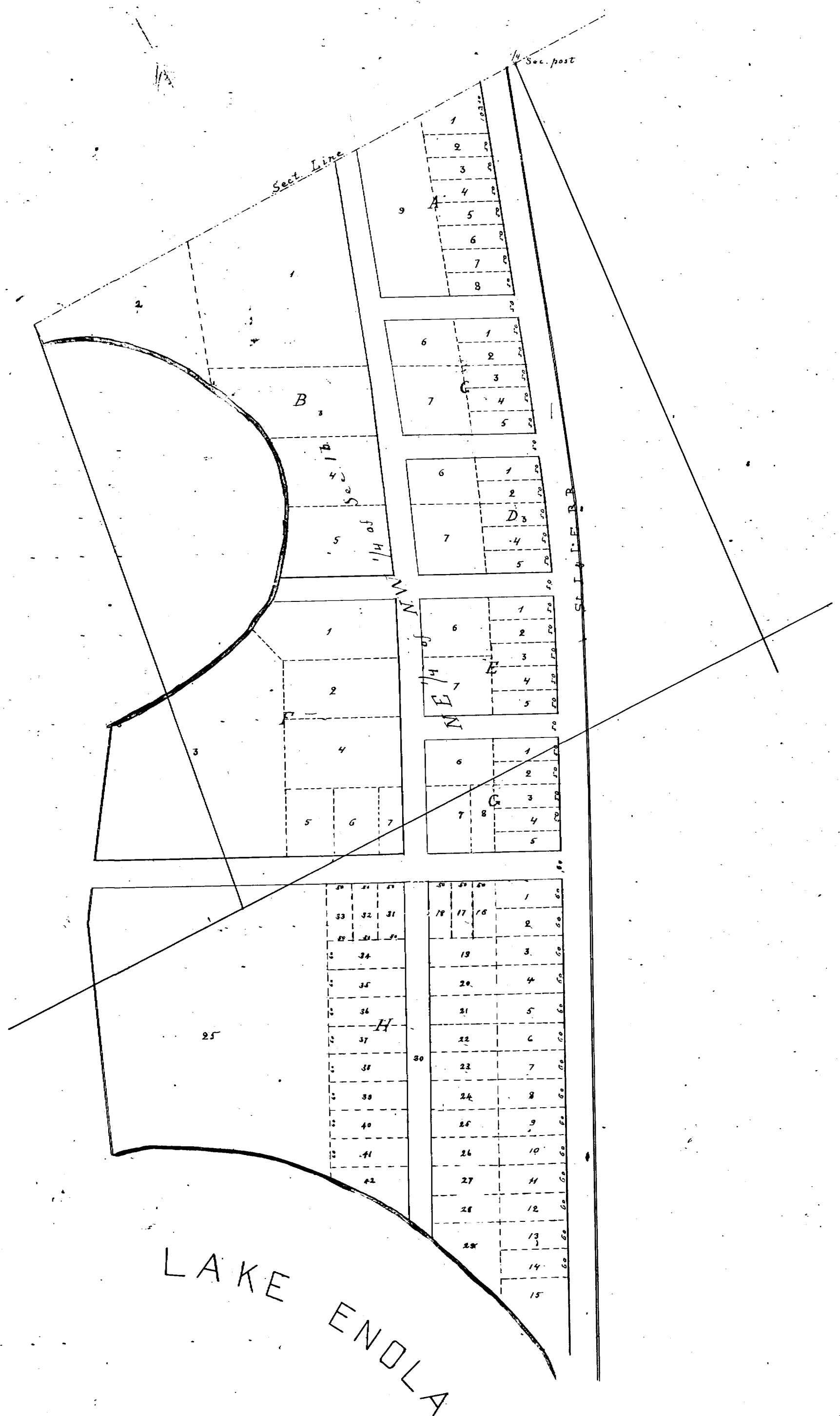
T 18 S Sec. 13 R 26 E

Surveyed by
J. O. Frick C.S.

Filed Aug. 9th 1885.

Scale:

One inch equal to 200 feet



B. A. Yancey's first subdivision of the same land according to which several lots were sold before this second division, is plotted on the back of this page.

