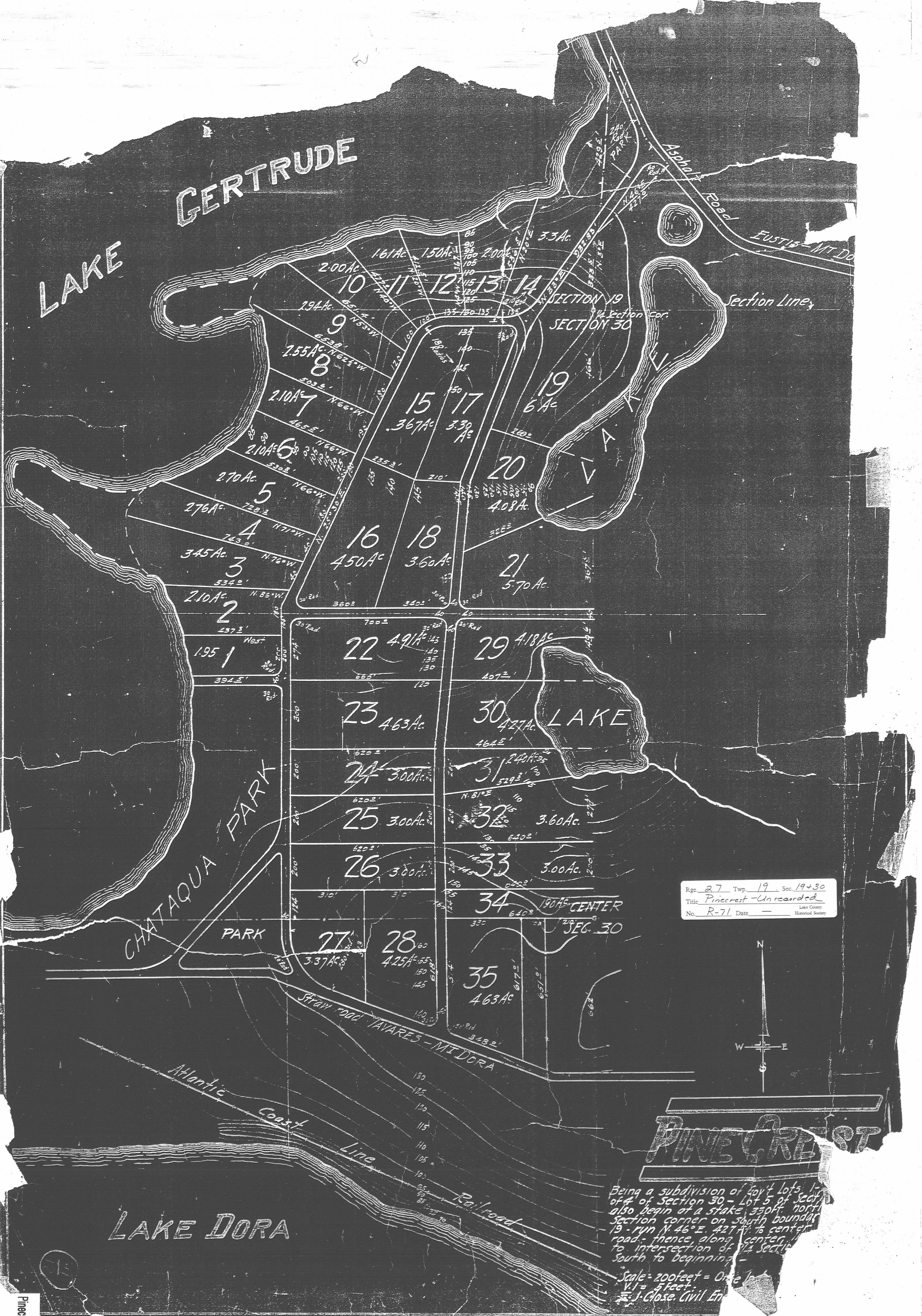
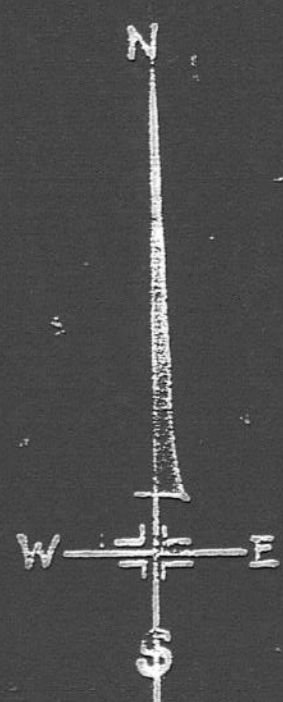


LAKE GERTRUDE



Rge. 27 Twp. 19. Sec. 19+30
Title Pinecrest - Unrecorded
No. R-71 Date
Lake County Historical Society



PINECREST

Being a subdivision of Gov't Lots 1-4 of Section 30 - Lot 5 of Section 19 also begin at a stake 330ft north section corner on south boundary 19 - run N 46° E. 427 ft to center road - thence along center road to intersection of 1/4 section South to beginning -

Scale = 200 feet = One Inch
V.I. = 5 feet
J. Close, Civil Eng.

LAKE DORA