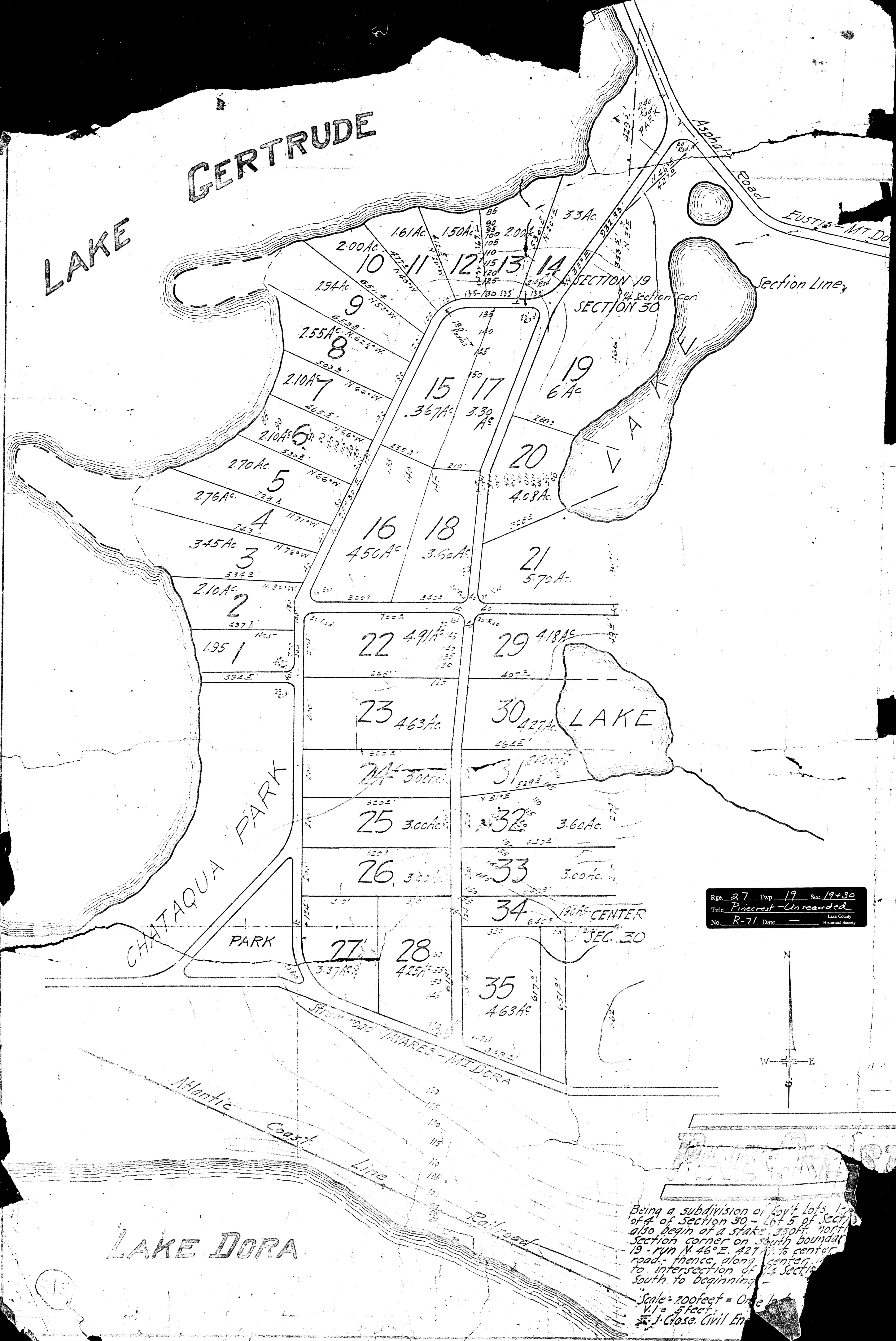
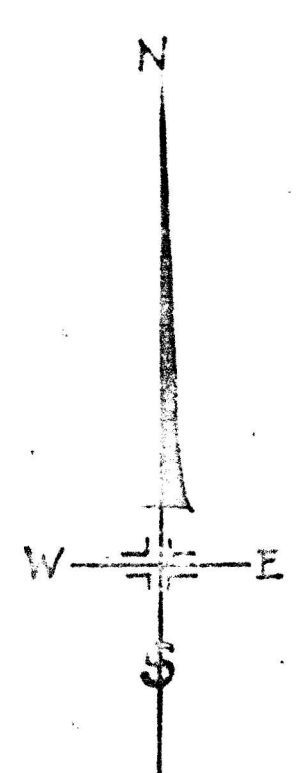


LAKE GERTRUDE



Rge. 27 Twp. 19 Sec. 19+30
 Title Pinecrest - Unrecorded
 No. R-71 Date _____
 Lake County Historical Society



PINECREST

Being a subdivision of Gov't lots 1-4 of Section 30 - Lot 5 of Sect. 19 also begin at a stake 350ft. north section corner on south boundary 19 - run N. 46° E. 427 ft. to center road - thence along center line to intersection of 1/2 Sec. 19 south to beginning -
 Scale - 200 feet = One Inch
 V.I. = 5 feet
 J. Close, Civil Eng.

LAKE DORA