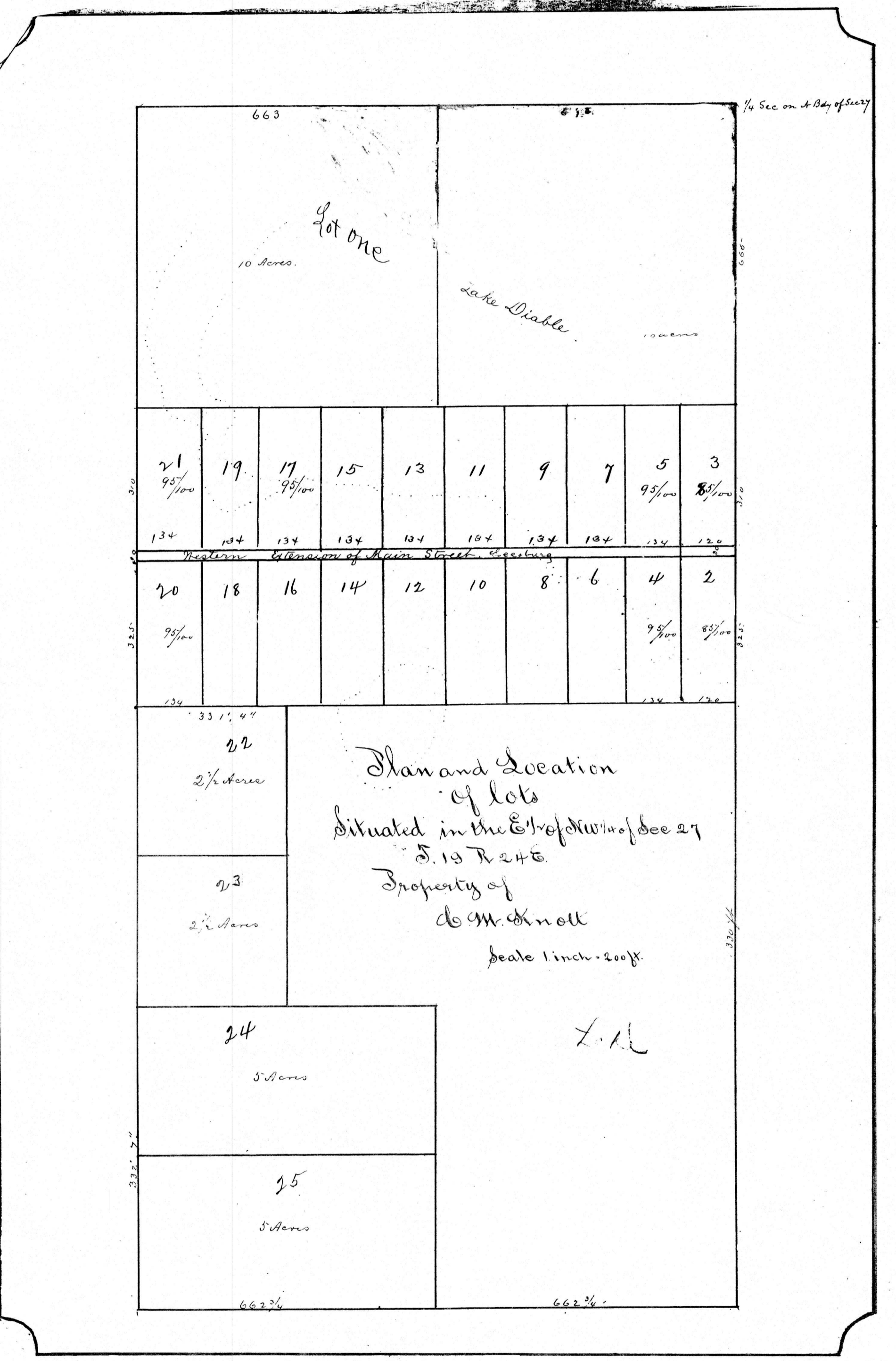


C.E. Hull, Surveyor
 Date of plat of 10,000 acres
 in 24 lots of 100 acres each
 of 27 sq. miles of 2500 acres
 of 2500 acres.



State of Florida }
 County of Sumter } J. C. M. Knott, Clerk of the Circuit Court, for
 Sumter County, do hereby certify that the above is a correct copy of
 the original Plat which was filed in my office for Record
 on the 13th August A.D. 1885, and Recorded the 13th August 1885.
 Witness my hand and the seal of the Circuit Court
 the day and year last above written.

J. C. M. Knott
 Clerk

State of Florida }
 County of Sumter } J. C. M. Knott Clerk of the Circuit Court
 of aforesaid County, do hereby certify that the fore-
 going is a correct copy of the original Plat.
 Filed for Record July 16th 1885, and Recorded the same
 day. Witness my hand and the seal of said Court
 the day last above written.

J. C. M. Knott
 Clerk