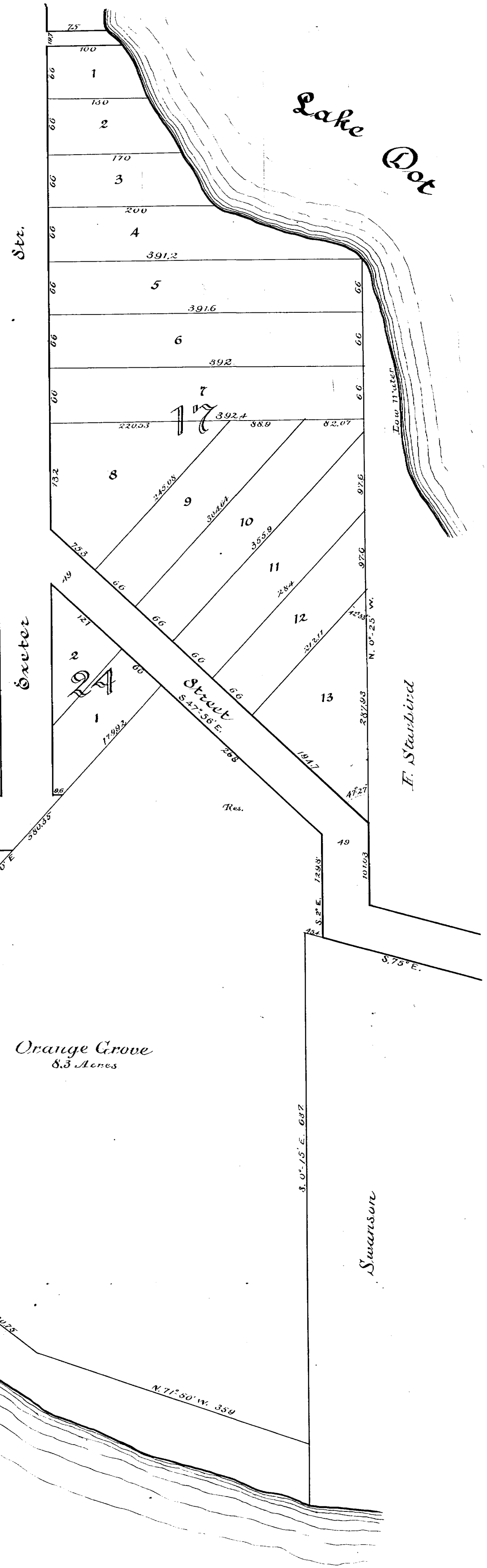
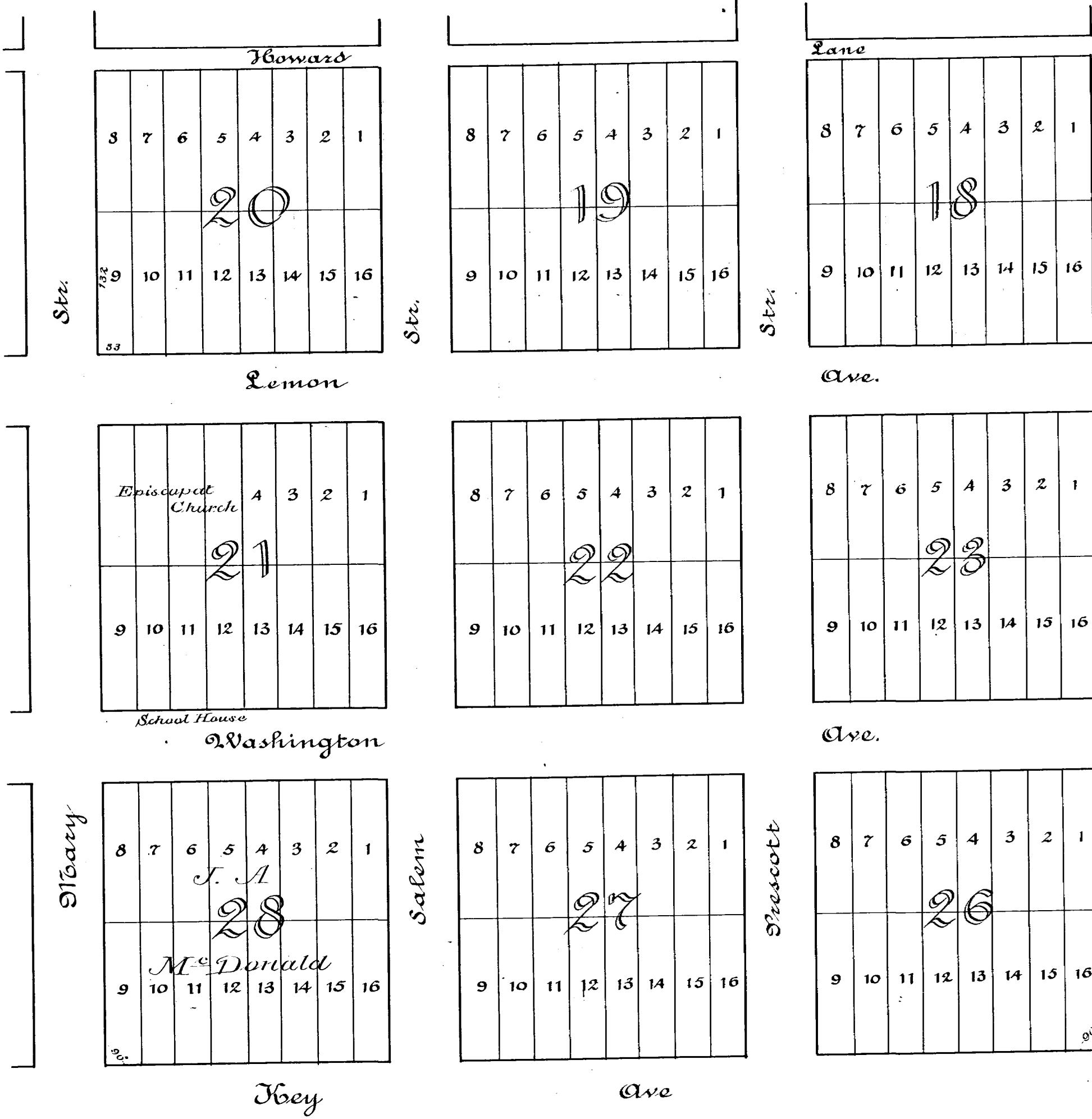


Continued on page 15



L. G. Prescott's Addition  
to  
Oustis

Lying in Sec. 11 - T. 19 S. - R. 26 E.  
Scale 100 ft. to 1 in.

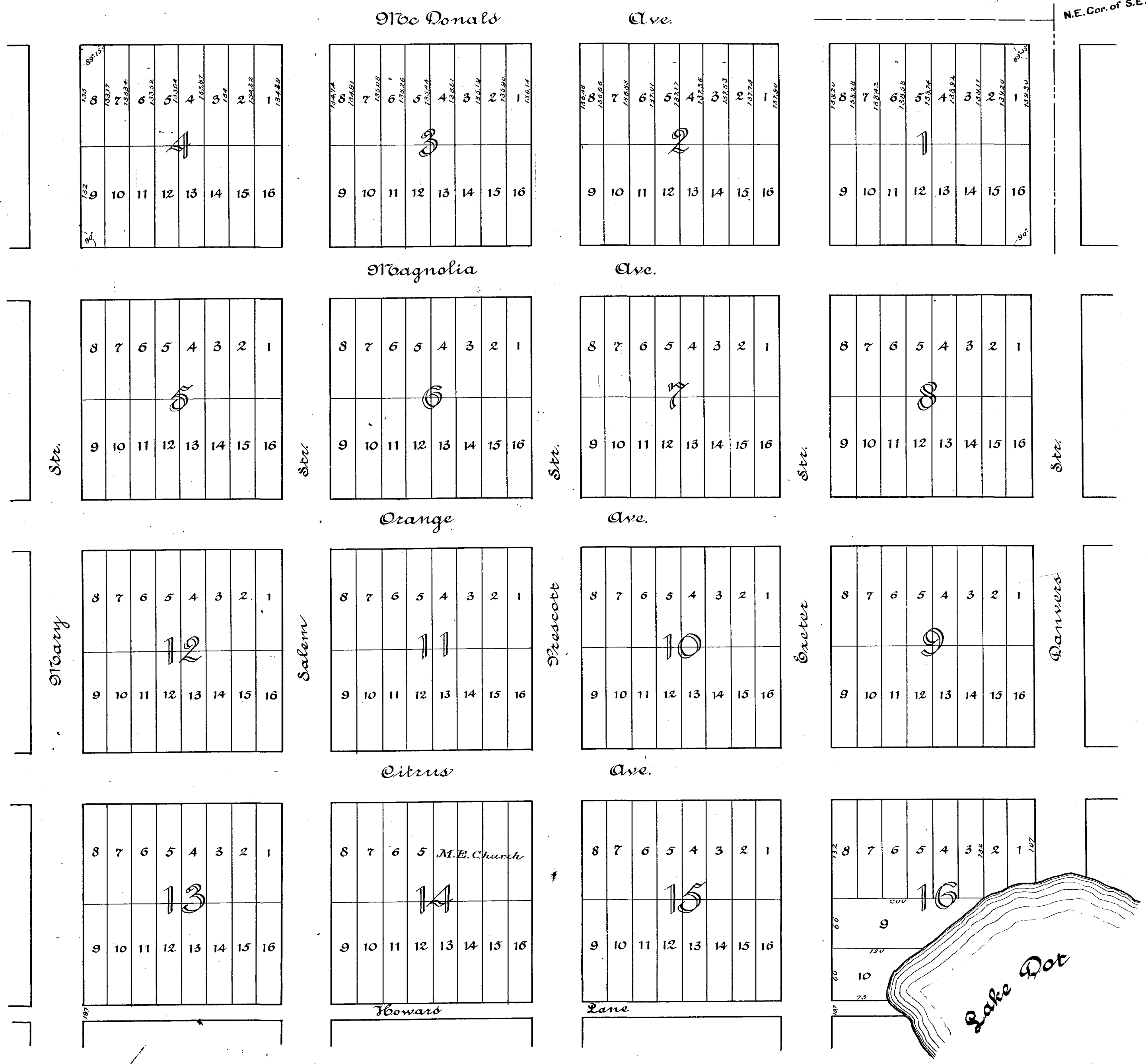
Surveyed by W. A. Clugston  
Platted by A. C. Aldrich.

All lots are 132 x 33 feet, unless otherwise marked.  
All streets and avenues are 66 ft. wide.  
Magnetic Variation 2° 25' N.

Continued on page 15

Filed and Recorded October 21<sup>st</sup> 1886  
J. J. Shaw Clerk  
By J. M. Broadshaw EC

N.E. Cor. of S.E. 1/4 of N.E. 1/4 of Sec. 11



Continued from page 14

Filed and Recorded October 21<sup>st</sup> 1886  
 J. J. Clark  
 By J. M. Bradshaw