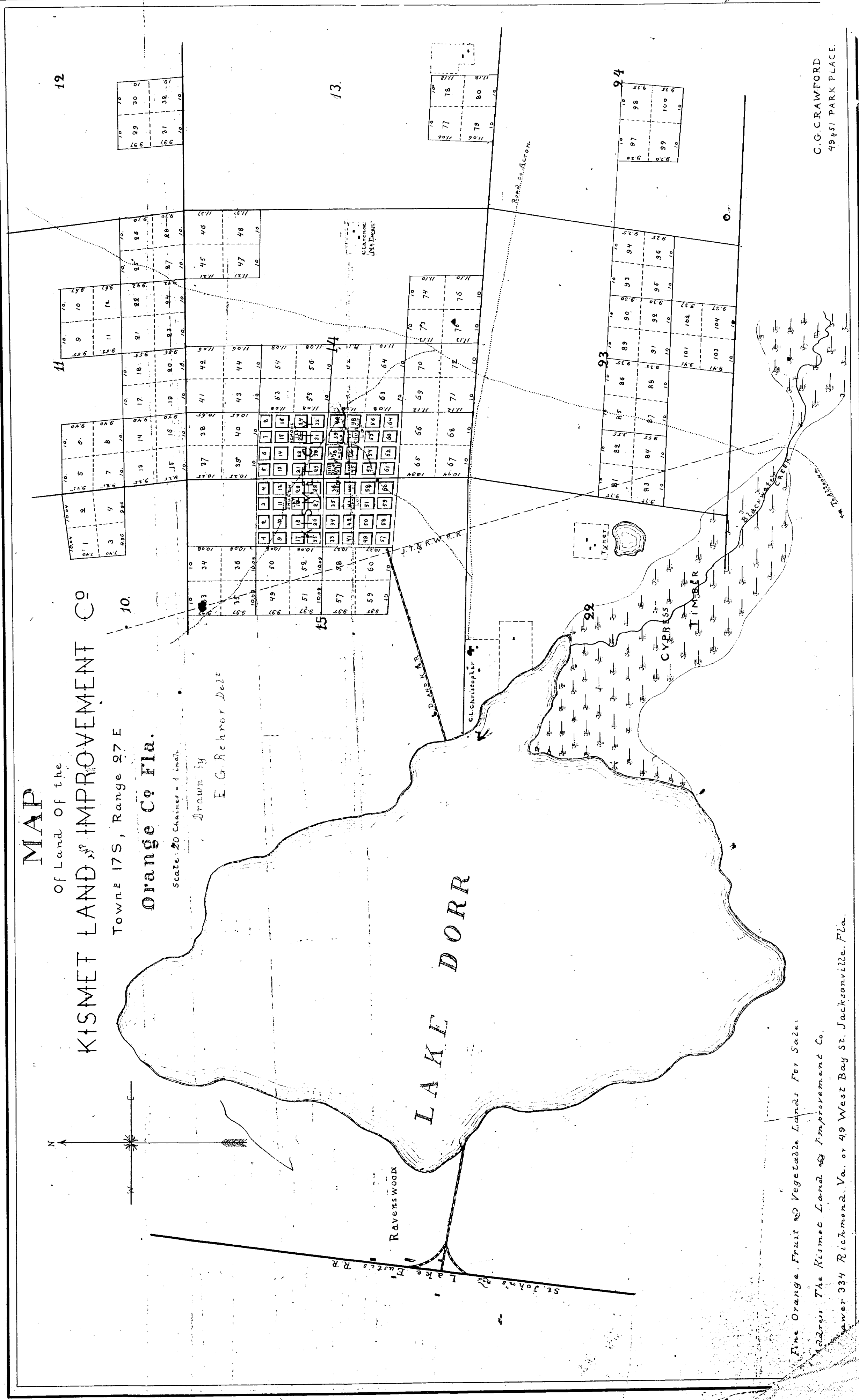


MAP
 Of Land of the
KISMET LAND IMPROVEMENT CO
 TOWNE 17S, Range 27E
Orange Co Fla.

Scale: 20 Chains = 1 inch.
 Drawn by
 E. G. Rehner Del.



Fine Orange, Fruit & Vegetable Lands For Sale:
 Address: The Kismet Land & Improvement Co.
 P.O. Box 334 Richmond, Va. or 49 West Bay St. Jacksonville, Fla.

C. G. CRAWFORD
 49 & 51 PARK PLACE.

Copied from the original map
 July 25, 1884 by S. C. Freer, Co. Surveyor.