

MAP

of

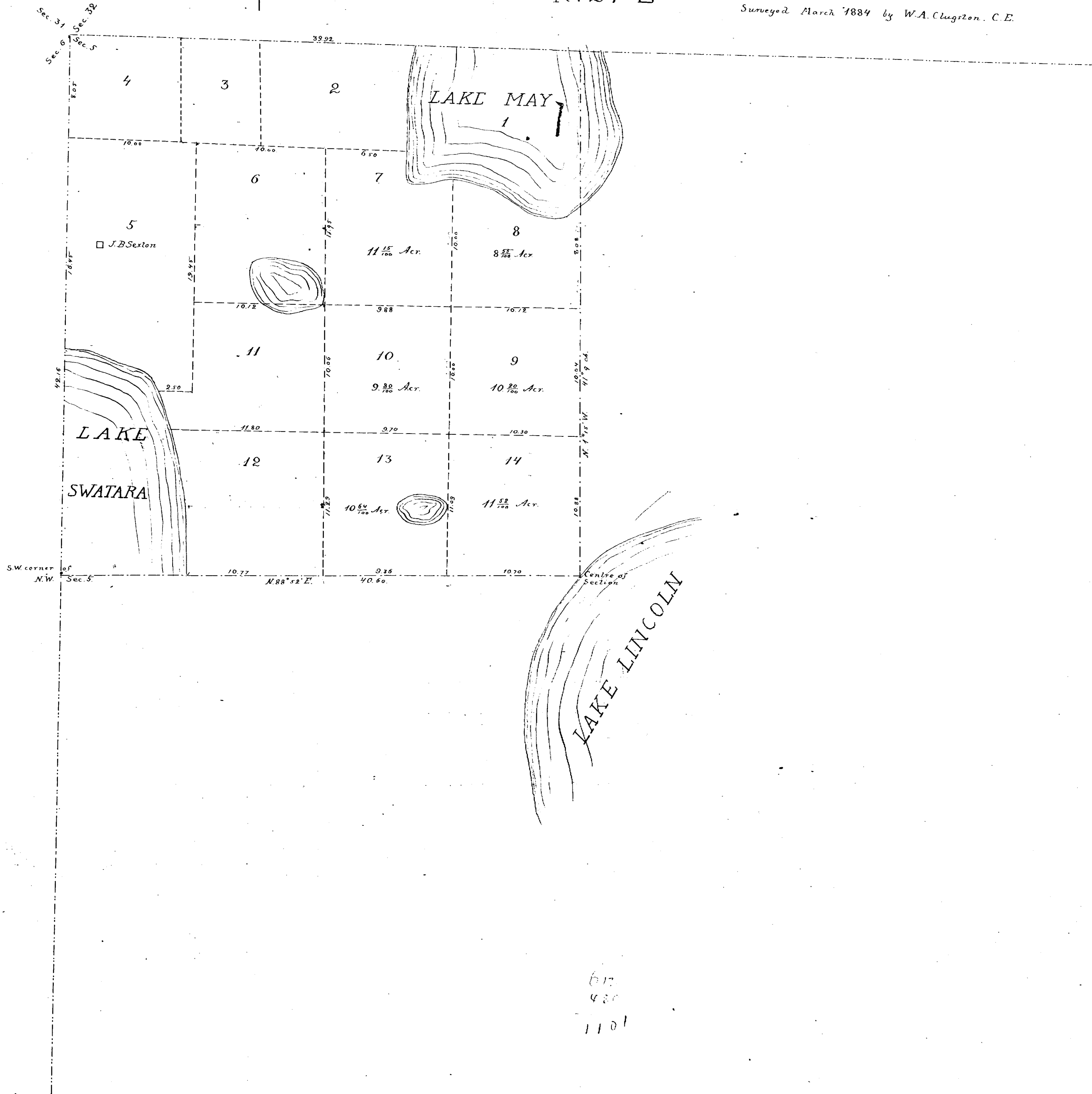
BRAZEELE

ORANGE Co = FLA

N.W. 1/4

Tp. 19 S — Sec. 5 — R. 27 E

Surveyed March 1884 by W.A. Clugston, C.E.



617
420
1101

In case the South Boundary line for Mr. Sexton's land should by right fall a little farther South, he claims his right to the corrected line.

Filed & recorded this
Oct 4th 1886
J. J. Hines
clerk