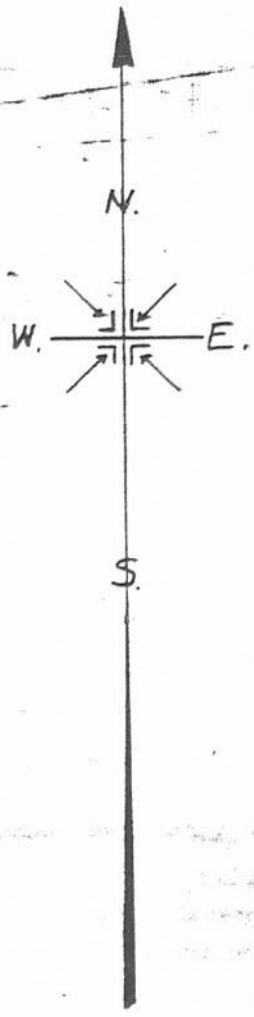


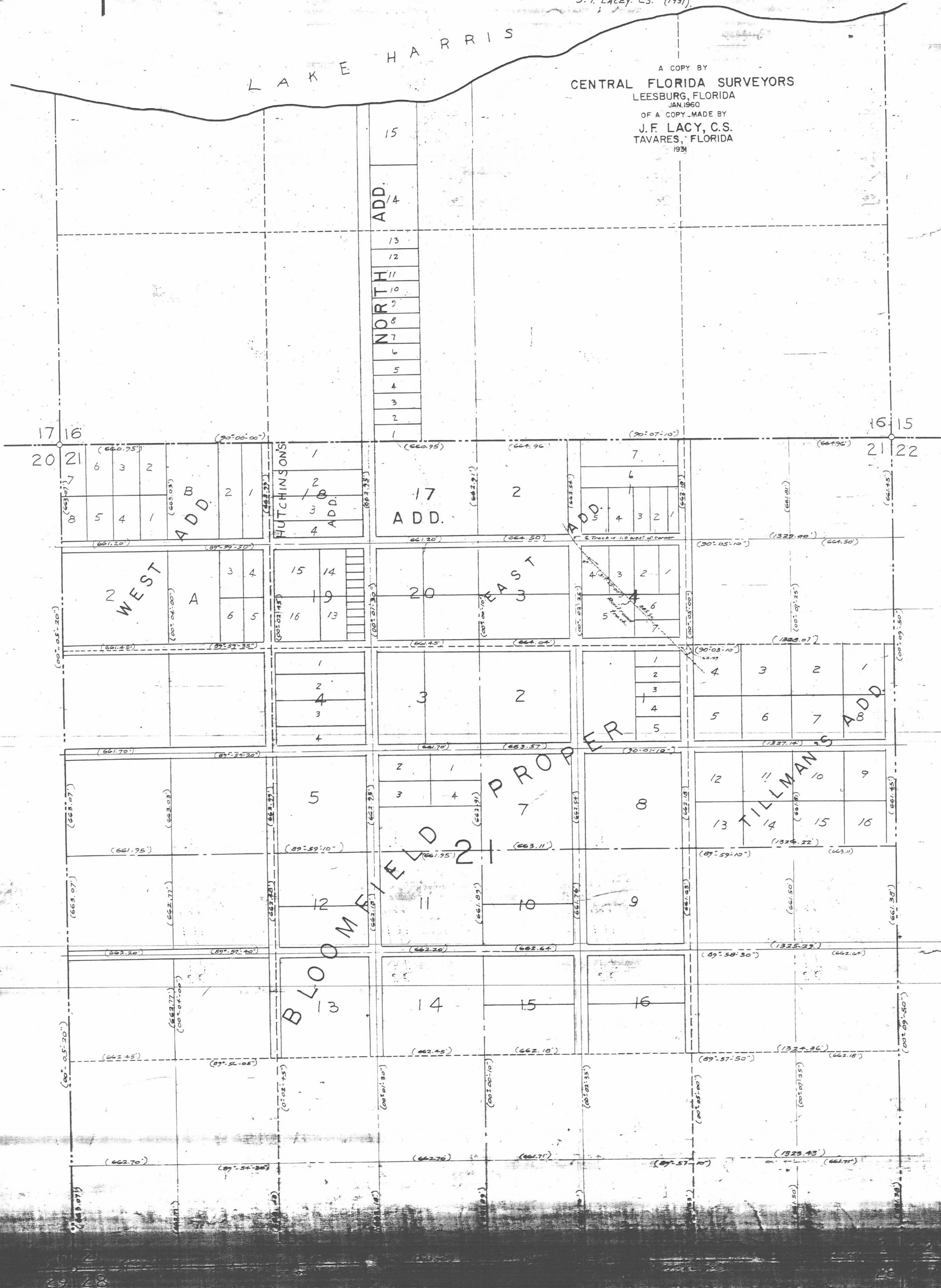
A M A P
OF
B L O O M F I E L D
SEC 21-TP. 20 S.-R. 25 E.
L A K E C O U N T Y, F L A.



The following is a statement made by E.S. Burleigh:—
who lived at Bloomfield and laid off the town and some of the additions, and asked him to indicate the location of the different additions. He outlined with a pen the various divisions and wrote the names that are written in ink on this map. I did this because the map on file did not show the names of the different parts of the town and I considered him the best authority on the subject.
 Signed, E.S. Burleigh.
This map is an enlargement of the one mentioned above. No definite scale was given on the original, nor were any dimensions given in figures.
 J. F. LACEY, C.S. (1931)

A COPY BY
 CENTRAL FLORIDA SURVEYORS
 LEESBURG, FLORIDA
 JAN. 1960
 OF A COPY MADE BY
 J. F. LACY, C.S.
 TAVARES, FLORIDA
 1961

L A K E H A R R I S



BLOOMFIELD

Bloom Field

SCALE: 1" = 100'