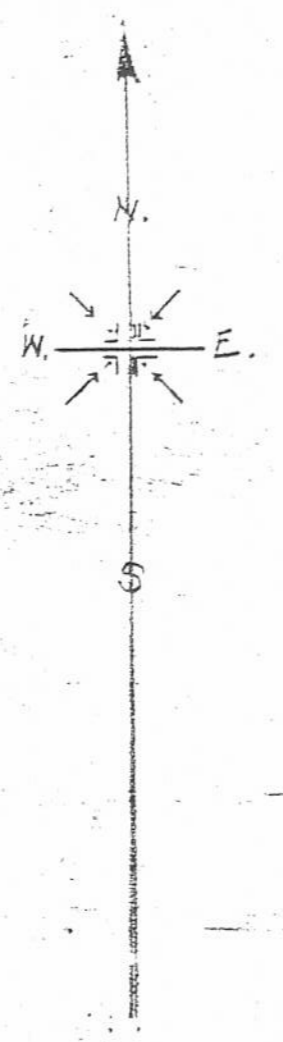
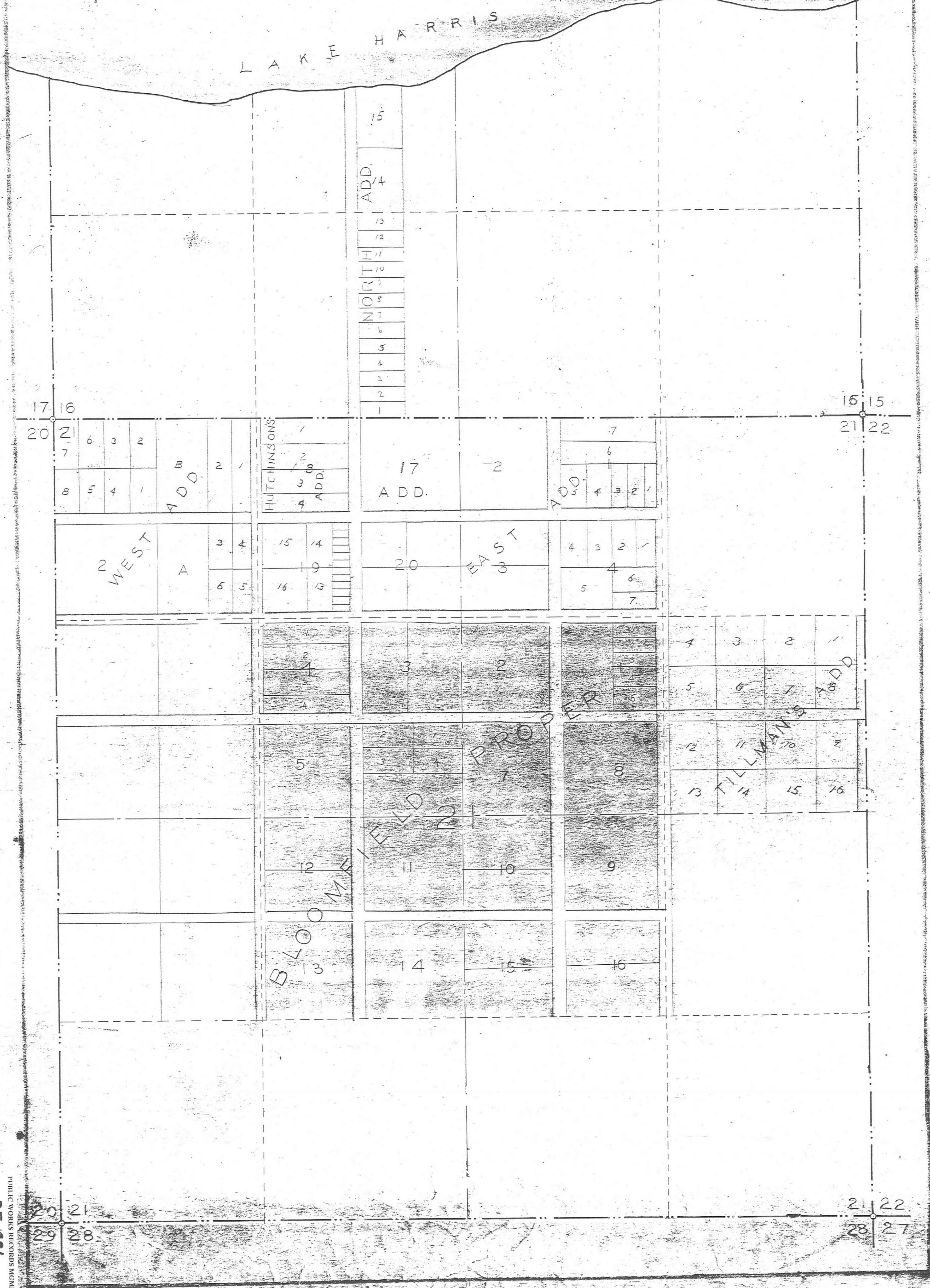


# A MAP OF BLOOMFIELD

SEC 21-TP 20S-R.25E  
LAKE COUNTY, FLA.



The following is a statement made by E.S. Burleigh -  
who lived at Bloomfield and laid off the town and some of the additions, and asked him to indicate the location of the different additions. He outlined with a pen the various divisions and wrote the names that are written in ink on this map. I did this because the map on file did not show the names of the different parts of the town and I considered him the best authority on the subject.  
Signed, E.S. Burleigh  
This map is an enlargement of the one mentioned above. No definite scale was given on the original, nor were any dimensions given in figures. J.F. Lacey, C.S. (1931).



CD #  
PUBLIC WORKS RECORDS MGMT  
ID # BF 991