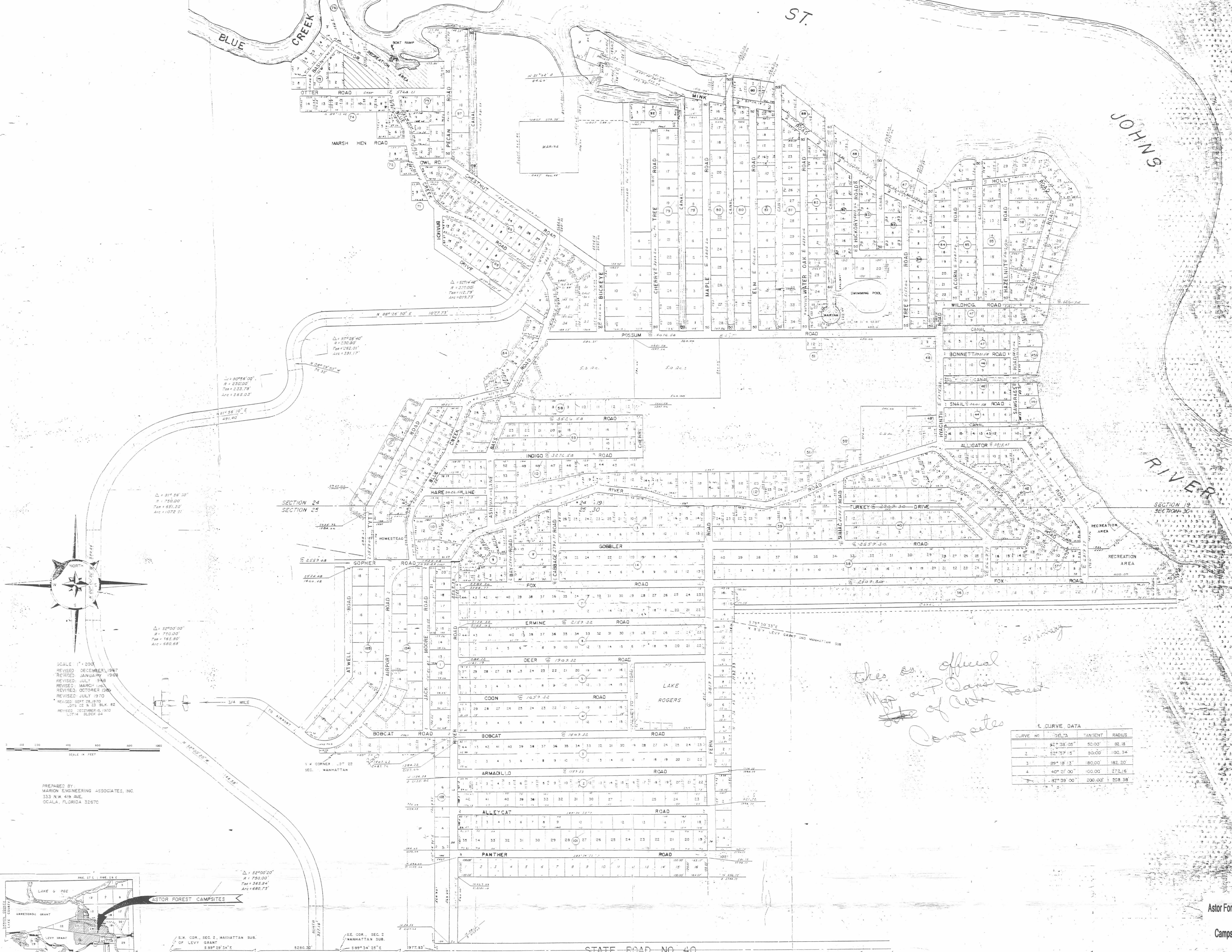


20/102/1
1/55

ASTOR FOREST CAMPSITES



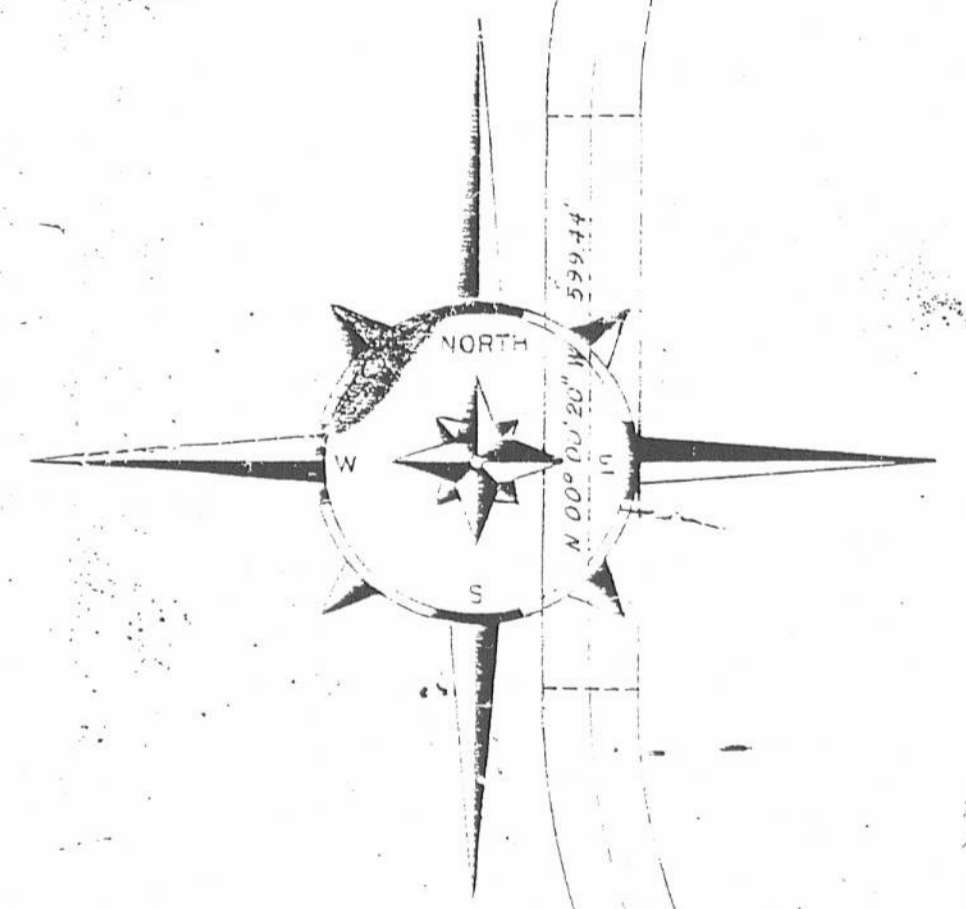
ST.

JOHNS RIVER

RIVER

SECTION 24
SECTION 25

SECTION 19
SECTION 20



$\Delta = 90^\circ 58' 00''$
 $R = 230.00'$
 $Tan = 233.78'$
 $Arc = 1262.03'$

$\Delta = 90^\circ 58' 00''$
 $R = 230.00'$
 $Tan = 233.78'$
 $Arc = 1262.03'$

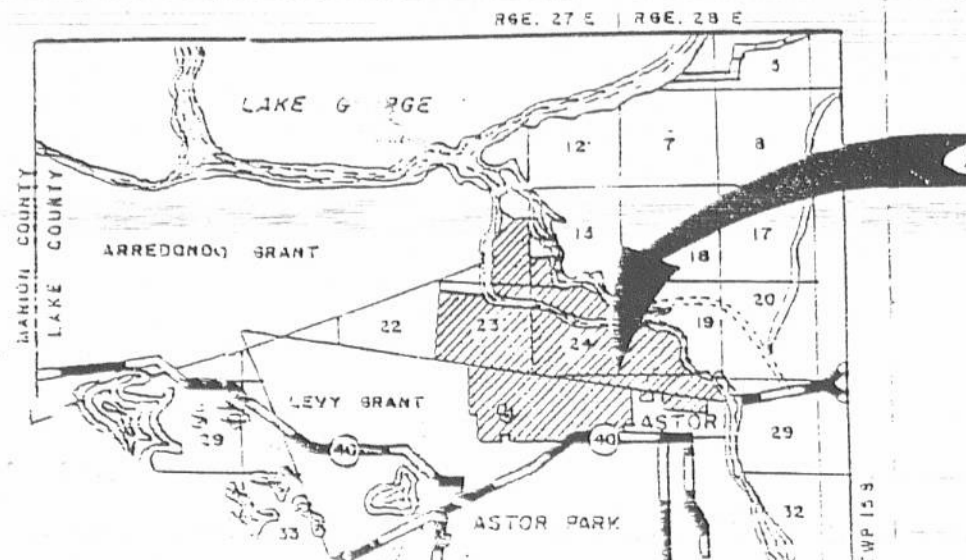
$\Delta = 90^\circ 58' 00''$
 $R = 230.00'$
 $Tan = 233.78'$
 $Arc = 1262.03'$

SCALE 1" = 200'

REVISED DECEMBER 1967
 REVISED JANUARY 1968
 REVISED JULY 1968
 REVISED MARCH 1969
 REVISED OCTOBER 1969
 REVISED JULY 1970
 REVISED SEP 20 1970
 015 12 N 13 BLK 82
 REVISED DECEMBER 1970
 13714 BLOCK 84

SCALE IN FEET

PREPARED BY
MARION ENGINEERING ASSOCIATES, INC.
333 NW 4TH AVE.
OCALA, FLORIDA 32870



$\Delta = 34^\circ 00' 00''$
 $R = 750.00'$
 $Tan = 385.84'$
 $Arc = 680.75'$

S.W. COR., SEC. 2, MANHATTAN SUB.
OF LEVY GRANT
S 89° 29' 24" E

S.E. COR., SEC. 2
MANHATTAN SUB.
S 89° 34' 25" E

STATE ROAD NO. 40

*This is official
Map of P. O. Davis Forest
Camp sites*

S & CURVE DATA

CURVE NO.	DELTA	TANGENT	RADIUS
1	62° 38' 05"	50.00'	92.88'
2	52° 37' 15"	50.00'	100.34'
3	89° 18' 13"	180.00'	182.20'
4	40° 21' 00"	100.00'	272.16'
5	87° 39' 00"	200.00'	208.38'