

# Alex. St. Clair-Abrams' Extension of Tavares

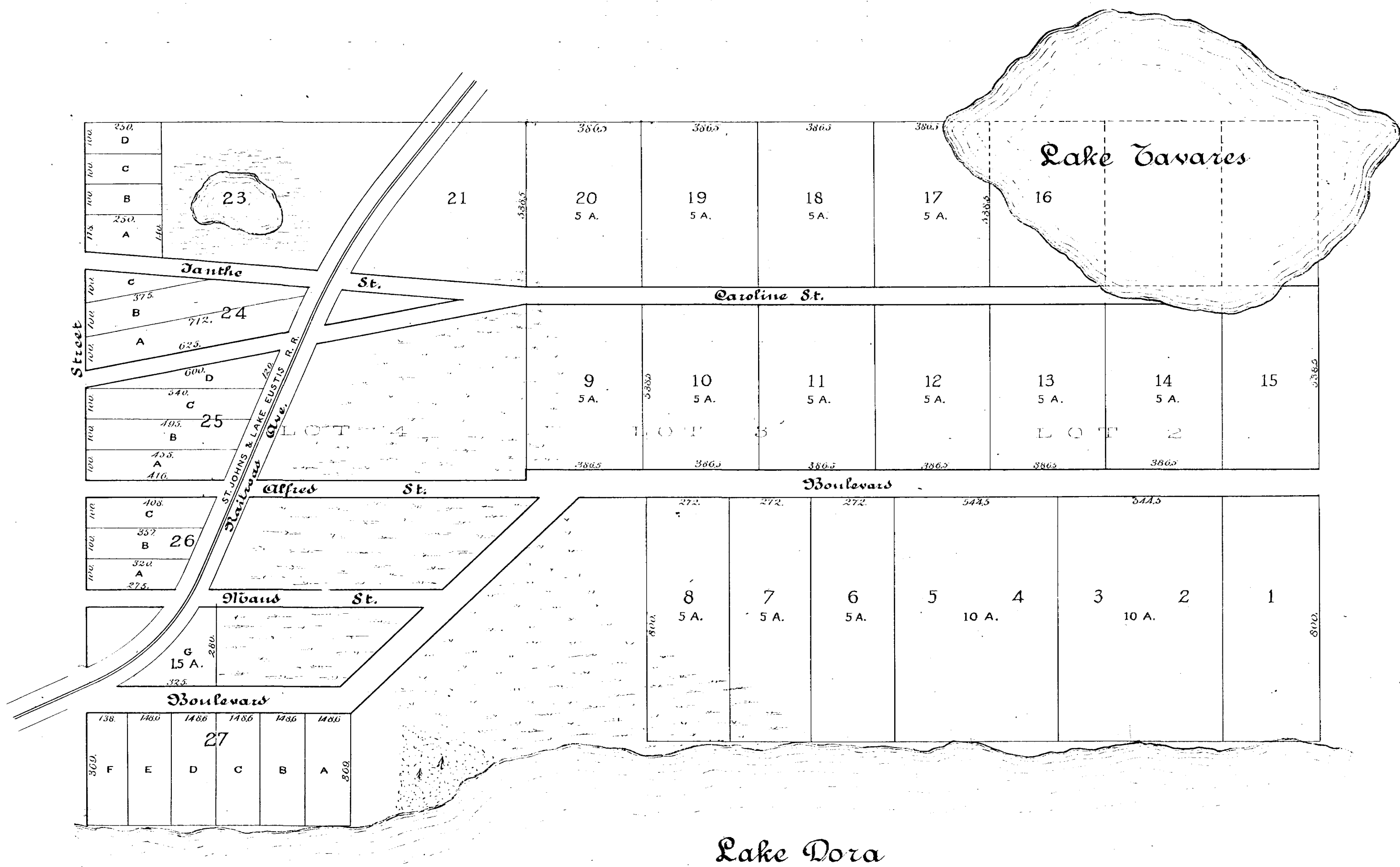
Orange Co. Fla.

Comprising Lots 2-3 & 4 in Sec. 28 - T. 19 S. - R. 26 E.

Surveyed Dec. 1883 by J.S. Camp

Scale 300 ft. to 1 in.

Copies Dec. 4th 1885 by C. C. Aldrich from the original tracing filed Feb. 15th 1884.



*See on Plat Book No. 2, 1884  
How Lot 22 is copied  
Feb 15, 1884  
J. S. Camp Clerk  
By W. H. Crawford A.C.*