



Transportation Improvement Program

**FISCAL YEARS
2018/19-2022/23**

**Approved
DRAFT – April 25, 2018**

Prepared by the
Lake-Sumter Metropolitan Planning Organization
225 W. Guava Street, Suite 211
Lady Lake, FL 32159

The preparation of this report was financed in part by the Federal Highway Administration, Federal Transit Administration, U.S. Department of Transportation and local participating governments. The views and opinions of the report do not necessarily reflect the official views or policy of the U.S. Department of Transportation.

**LAKE-SUMTER METROPOLITAN PLANNING ORGANIZATION
TRANSPORTATION IMPROVEMENT PROGRAM (TIP)
FISCAL YEARS 2018/19 - 2022/23**

TABLE OF CONTENTS

	PAGE #
MEMBERS LIST	3
PURPOSE	4
FINANCIAL PLAN	5-6
PROJECT SELECTION	7
CONSISTENCY WITH OTHER PLANS	7
PROJECT PRIORITY STATEMENT	7
IMPLEMENTED PROJECTS	7
PUBLIC INVOLVEMENT	7
CERTIFICATION	7
SUMMARY OF SIGNIFICANT PROJECTS	7
SAFETY PERFORMANCE MEASURES	8-10
ABBREVIATIONS AND ACRONYMS	11-12
2018/19-2022/23 WORK PROGRAM	13-56
LAKE COUNTY TRANSPORTATION CONSTRUCTION PROGRAM	APPENDIX A
SUMTER COUNTY CAPITAL IMPROVEMENTS PROGRAM	APPENDIX B
FEDERAL OBLIGATIONS REPORT	APPENDIX C
FHWA SAFETY PERFORMANCE MEASURES	APPENDIX D

**LAKE-SUMTER METROPOLITAN PLANNING ORGANIZATION
2018 MEMBER LIST**

<u>NAME</u>	<u>REPRESENTING</u>
Tim Sullivan/ Chair	Lake County
Sean Parks	Lake County
Wendy Breeden	Lake County
Leslie Campione/ 1st Vice - Chair	Lake County
Josh Blake	Lake County
Don Burgess	Sumter County (1)
Doug Gilpin	Sumter County (2)
Al Butler (alternate)	
Steve Printz (alternate)	
Ray Goodgame	City of Clermont
Diane Travis (alternate)	
Robert Morin	City of Eustis
Marie Aliberti	
Jim Richards / 2nd Vice - Chair	Town of Lady Lake
Dan Vincent (alternate)	
Bob Bone	City of Leesburg
Dan Robuck (alternate)	
Pat Kelley/ Immediate Past - Chair	City of Minneola
Lisa Jones (alternate)	
Nick Girone / Chair - Elect	City of Mount Dora
Marc Crail (alternate)	
Troy Singer	City of Tavares
Kirby Smith (alternate)	
Mitchell Mack	Town of Astatula
Rick Ranize	City of Fruitland Park
John Gunter (alternate)	
Dina Sweatt	City of Groveland
Ed Conroy	Town of Howey-in-the-Hills
David Nebel (alternate)	
Sally Rayman	City of Mascotte
Barbara Krull (alternate)	
Joe Wynkoop	Town of Montverde
Jim Ley (alternate)	
Katherine Adams / Lake At-Large Representative	City of Umatilla
Eric Olson (alternate)	
Bil Spaude	City of Bushnell
Richard Huff	City of Coleman
Mike Foote	City of Webster
Bobby Yost (Alternate)	
Ed Wolf	City of Wildwood
Joe Elliott / Sumter At-Large Representative	
Pete Petree	Florida Central Railroad / Ex-officio
Matt Schwerin (alternate)	
Sandy Gamble	Lake County School Board / Ex-officio
Christine Norris	Sumter County School Board / Ex-officio

THE TRANSPORTATION IMPROVEMENT PROGRAM

PURPOSE

The purpose of the Transportation Improvement Program (TIP) is to provide a staged, multi-year, intermodal program of transportation projects, consistent with the Lake~Sumter MPO 2040 Long Range Transportation plan (LRTP). The TIP is required of all metropolitan areas, under Section 134 of Title 23, United States Code (USC), as amended by the Safe, Accountable, Flexible, Efficient Transportation Equity Act: A Legacy for Users (SAFETEA-LU) of 2005. The TIP includes improvement projects for the highway, transit, bicycle/pedestrian and rail systems.

The Lake~Sumter MPO TIP contains all transportation projects within the Lake County and Sumter County metropolitan areas designated for funding from Title 23 and Title 49 funding sources and all regionally significant transportation projects requiring federal action, regardless of funding source. Projects of regional-significance in this iteration of the TIP include segments of the Wekiva Parkway in eastern Lake County including improved SR 46/US 441 Interchange, SR 46 improvements, a new SR 429 and a new alignment of CR 46A. The TIP also includes improvements to US 27 in southeastern Lake County, improvements to US 441/27 in Lady Lake, improvements to SR 48 in Bushnell, improvements to I-75 in Sumter County and a new interchange with Florida's Turnpike in Minneola. The TIP includes right-of-way funds for US 441 in Mount Dora and for Citrus Grove Road in Minneola. The TIP also includes design funds for Florida's Turnpike in Lake County.

FINANCIAL PLAN

The Lake~Sumter MPO 2017/18-2021/22 TIP, financially constrained for each of the five years, was developed in cooperation with FDOT, Lake County and Sumter County. Financially constrained or Fiscal constraint means that the metropolitan transportation plan, Transportation Improvement Program, and Statewide Transportation Improvement Program includes sufficient financial information for demonstrating that projects in the metropolitan transportation plan, Transportation Improvement Program, and Statewide Transportation Improvement Program can be implemented using committed, available, or reasonably available revenue sources, with reasonable assurance that the federally supported transportation system is being adequately operated and maintained. For the Transportation Improvement Program and the Statewide Transportation Improvement Program, financial constraint/fiscal constraint applies to each program year. Additionally, projects in air quality nonattainment and maintenance areas can be included in the first two years of the Transportation Improvement Program and Statewide Transportation Improvement Program only if funds are "available" or "committed". The projects within the TIP are financially feasible and the federally funded projects identified in the TIP can be implemented using current and proposed revenue sources, based on FDOT's Five-Year Work Program and locally dedicated transportation revenues. Project costs reported in the TIP are in Year of Expenditure (YOE) dollars, which takes into account the inflation rate over the five years covered by the TIP.

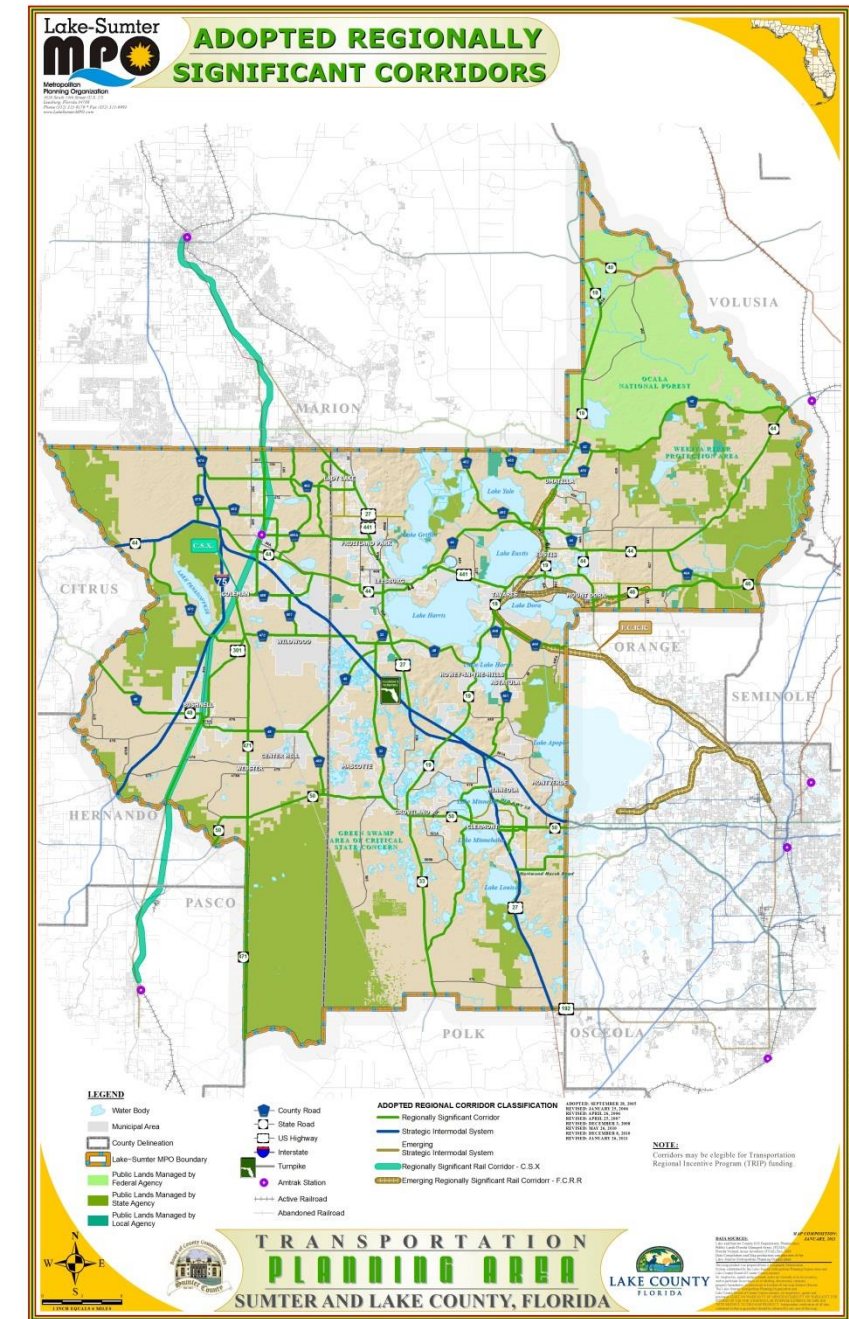
FULL PROJECT COSTS AND OTHER PROJECT DETAILS

Projects on the Strategic Intermodal System (SIS)

The normal project production sequence is to have a Project Development and Environment (PD&E) phase, a Design (PE) phase, a Right of Way (ROW) phase and a Construction (CST) phase. Some projects may not have a ROW phase, if land is not needed to complete the project. Costs on the TIP pages for projects on the SIS will have historical costs, five years of the current TIP and five years beyond the current TIP, which may or may not be the total project cost. If there is no CST phase on the TIP page, then the entry will probably not be reflective of the total project cost. For some projects, such as resurfacing, safety or operational project, there may not be a total cost provided but rather additional details on that program.

The SIS is a network of high priority transportation facilities which includes the state's largest and most significant commercial service airports, spaceport, deep water seaports, freight rail terminals, passenger rail and InterCity bus

Figure 1: Lake~Sumter Region



terminals, rail corridors, waterways and highways. All projects on the SIS will have a SIS identifier on the TIP page (See example TIP page below).

For costs beyond the ten year window, access to the Long Range Transportation Plan (LRTP) is provided. The link to the LRTP is <http://www.lakesumtermpo.com/2040/index.aspx>. The LRTP reference on the TIP page provides the information necessary to locate the full project costs and/or additional details regarding the project in the LRTP (See example TIP page below). If there is no LRTP reference in the TIP, full project costs are provided in the TIP.

Lake Sumter Metropolitan Planning Organization Transportation Improvement Program - FY 2012/13 - 2016/17

Phase	Fund Source	2012/13	2013/14	2014/15	2015/16	2016/17	Total	
4301321 - SR 35 (US 301) FROM FROM C-470 TO TO SR 44							*Non-SIS*	
PD&E/EMO STUDY		Responsible Agency: FDOT					LRTP No: pg.11,17,18,19,20,6,32,33,57	
PD&E	DIH	10,000	20,000	0	0	0	30,000	
PD&E	DDR	0	980,000	0	0	0	980,000	
Total		10,000	1,000,000	0	0	0	1,010,000	
Prior Cost		Future Cost		Total Project Cost			1,010,000	
4301331 - SR 35 (US 301) FROM FROM N MAIN ST CR 48 TO TO C-470							*Non-SIS*	
PD&E/EMO STUDY		Responsible Agency: FDOT					LRTP No: pg.11,17,18,19,20,26,32,33,57	
PD&E	DIH	10,000	20,000	0	0	0	30,000	
PD&E	DDR	0	980,000	0	0	0	980,000	
Total		10,000	1,000,000	0	0	0	1,010,000	
Prior Cost		Future Cost		Total Project Cost			1,010,000	
4301341 - SR 44 FROM FROM C-475 TO TO I-75							*SIS*	
PD&E/EMO STUDY		Responsible Agency: FDOT					LRTP No: pg.11,17,18,19,20,26,32,33,57	
PD&E	DIH	10,000	20,000	0	0	0	30,000	
PD&E	DDR	0	840,000	0	0	0	840,000	
Total		10,000	860,000	0	0	0	870,000	
Prior Cost		Future Cost		Total Project Cost			870,000	

TIP FY 2012/13 - 2016/17 APPROVED JUNE 27, 2012 1-2 Transportation Planning

Non SIS projects

The normal project production sequence is to have a Project Development and Environment (PD&E) phase, a Design (PE) phase, a Right of Way (ROW) phase and a Construction (CST) phase. Some projects may not have a ROW phase, if land is not needed to complete the project. Costs on the TIP pages for projects not on the SIS will have historical costs and five years of the current TIP, which may or may not be the total project cost. If there is no CST phase on the TIP page, then the entry will probably not be reflective of the total project cost. For some projects, such as resurfacing, safety or operational projects, there may not be a total cost provided but rather additional details on that program.

Total project costs and other project details will be accessible in the TIP for all non SIS projects in the TIP. All projects not on the SIS will have a Non-SIS identifier on the TIP page (See example TIP page below).

For costs beyond the five year window, access to the Long Range Transportation Plan (LRTP) is provided. The link to the LRTP is <http://www.lakesumtermo.com/2040/index.aspx>. The LRTP reference on the TIP page provides the information necessary to locate the full project costs and/or additional details regarding the project in the LRTP (See example TIP page below). If there is no LRTP reference in the TIP, full project costs are provided in the TIP.

Lake Sumter Metropolitan Planning Organization Transportation Improvement Program - FY 2012/13 - 2016/17

Phase	Fund Source	2012/13	2013/14	2014/15	2015/16	2016/17	Total
4301321 - SR 35 (US 301) FROM FROM C-470 TO TO SR 44							*Non-SIS*
PD&E/EMO STUDY		L RTP No: pg.11,17,18,19,20,6,32,33,57					
		Responsible Agency: FDOT					
PD&E	DIH	10,000	20,000	0	0	0	30,000
PD&E	DDR	0	980,000	0	0	0	980,000
Total		10,000	1,000,000	0	0	0	1,010,000
Prior Cost		Future Cost		Total Project Cost			1,010,000
4301331 - SR 35 (US 301) FROM FROM N MAIN ST CR 48 TO TO C-470							*Non-SIS*
PD&E/EMO STUDY		L RTP No: pg.11,17,18,19,20,26,32,33,57					
		Responsible Agency: FDOT					
PD&E	DIH	10,000	20,000	0	0	0	30,000
PD&E	DDR	0	980,000	0	0	0	980,000
Total		10,000	1,000,000	0	0	0	1,010,000
Prior Cost		Future Cost		Total Project Cost			1,010,000
4301341 - SR 44 FROM FROM C-475 TO TO I-75							*SIS*
PD&E/EMO STUDY		L RTP No: pg.11,17,18,19,20,26,32,33,57					
		Responsible Agency: FDOT					
PD&E	DIH	10,000	20,000	0	0	0	30,000
PD&E	DDR	0	840,000	0	0	0	840,000
Total		10,000	860,000	0	0	0	870,000
Prior Cost		Future Cost		Total Project Cost			870,000

L RTP Reference SIS Identifier

TIP FY 2012/13 - 2016/17 APPROVED JUNE 27, 2012 1-2 Transportation Planning

PROJECT SELECTION

Consistent with federal requirements in 23 CFR 450.330(b), and Title 23, Section 134 USC, as amended by SAFETEA-LU, the projects selected for the Lake~Sumter MPO TIP were taken from the MPO’s adopted List of Priority Projects (LOPP) which were drawn from the Transportation 2040, adopted in December 2015.

For information purposes, the currently adopted Lake County 5-year Transportation Construction Program (TCP) and Sumter County 5-Year Capital Improvement Program are included in the appendix. When a transportation project within the MPO planning

area has been identified, the MPO requests that FDOT and the Federal Highway Administration (FHWA) actively pursue appropriate funding.

The FDOT shall give priority to those projects that are:

1. Designed to maximize safe and efficient travel;
2. Identified in approved local government comprehensive plans to receive local matching funds in accordance with the provisions of Section 335.20, F.S. or to be funded pursuant to the provisions of Section 339.12, F.S.;
3. Within transportation corridors protected by local government action;
4. Used in the operation of, or in conjunction with, public transportation facilities; and
5. Located within the boundaries of a local government which has made a responsible effort to fund improvements needed to accommodate local traffic.

CONSISTENCY WITH OTHER PLANS

All projects included in the Lake~Sumter MPO TIP have been drawn from the Transportation 2040. The projects are consistent with the FDOT Five-Year Adopted Work Program and the Lake County Transit Development Plan (TDP).

PROJECT PRIORITY STATEMENT

The Lake~Sumter MPO will submit its adopted List of Priority Projects (LOPP) to FDOT for use in developing the new outer year of the Five-Year Work Program.

IMPLEMENTED PROJECTS

FDOT produces an annual listing of projects for which federal funds have been obligated in the previous year. This list has been published and made available for public review through FDOT. www.dot.state.fl.us/programdevelopmentoffice/federal/fa_mpo_obligdet.shtml

PUBLIC INVOLVEMENT

Annually, the Lake~Sumter MPO develops its TIP in accordance with all applicable State and Federal laws governing public involvement. This includes 23 CFR 450.316 and 23 CFR 450.324(b). Specific procedures for use of public involvement in the annual development of the TIP have been clearly defined in the MPO's adopted Public Involvement Process (PIP). Prior to adoption of the final TIP, the Lake~Sumter MPO sought public comment on the draft TIP by making the document available on our website (LakeSumterMPO.com). In addition, all Lake~Sumter MPO meetings are held in accordance with Florida's open meetings law (the Sunshine Law), and an opportunity is provided for public comment. The new TIP was presented as a draft document at the April meetings of the Technical Advisory Committee, the Citizen Advisory Committee, the Bicycle & Pedestrian Advisory Committee and the Executive Committee. The draft TIP was on the agenda of the April Lake~Sumter MPO Governing Board meeting. The final TIP document was recommended for approval by all MPO committees in May and was granted final approval by the MPO Governing Board May 24, 2017. Amendments to the TIP document occur throughout the year through a process that follows the MPO's PIP. Amendments are presented to MPO committees for public input and recommendations. After being posted for 21 days, the MPO Governing Board takes action to approve TIP amendments. Public comments received at public meetings are incorporated into the TIP document as applicable and feasible.

CERTIFICATION

The Lake~Sumter MPO participates in an annual self-certification of its planning process with representatives from the Florida Department of Transportation, District 5. The last annual self-certification with FDOT was completed April 2017.

TRANSPORTATION DISADVANTAGED (TD)

The projects included in the TIP are consistent with adopted short and long range transportation plans and master plans of the agencies and jurisdictions in the Lake~Sumter area. The projects listed in this TIP are part of the MPO's 2040 Long Range Transportation Plan, Lake County 2020 Transit Development Plan, and Lake and Sumter County Transportation Disadvantaged Service Plans. The plans and the projects identified in the TIP are also consistent, to the maximum extent feasible, with the adopted Comprehensive Plans of the local governments in the Lake~Sumter area.

Addressing Safety Performance Measures in MPO Transportation Improvement Plans (TIPs)

Performance Management is a strategic approach to connect investment and policy decisions to help achieve performance goals. Performance measures are quantitative criteria used to evaluate progress. Performance measure targets are the benchmarks against which collected data is gauged. The Moving Ahead for Progress in the 21st Century Act (MAP-21) requires State DOTs and MPOs to conduct performance-based planning by tracking performance measures and setting data-driven targets to improve those measures. Performance-based planning ensures the most efficient investment of federal transportation funds by increasing accountability, transparency, and providing for better investment decisions that focus on key outcomes related to seven national goals:

- Improving Safety;
- Maintaining Infrastructure Condition;
- Reducing Traffic Congestion;
- Improving the Efficiency of the System and Freight Movement;
- Protecting the Environment; and,
- Reducing Delays in Project Delivery.

The Fixing America's Surface Transportation (FAST) Act supplements the MAP-21 legislation by establishing timelines for State DOTs and MPOs to comply with the requirements of MAP-21. State DOTs are required to establish statewide targets and MPOs have the option to support the statewide targets or adopt their own.

Safety is the first national goal identified in the FAST Act. In March of 2016, the Highway Safety Improvement Program (HSIP) and Safety Performance Management Measures Rule (Safety PM Rule) was finalized and published in the *Federal Register*. The rule requires MPOs to set targets for the following safety-related performance measures and report progress to the State DOT:

- Fatalities;
- Serious Injuries;
- Nonmotorized Fatalities and Serious Injuries;
- Rate of Fatalities per 100M Vehicle Miles Traveled (VMT); and
- Rate of Serious Injuries per 100M VMT.

The 2016 Florida Strategic Highway Safety Plan (SHSP) is the statewide plan focusing on how to accomplish the vision of eliminating fatalities and reducing serious injuries on all public roads. The SHSP was developed in coordination with Florida's 27 metropolitan planning organizations (MPOs) through Florida's Metropolitan Planning Organization Advisory Council (MPOAC). The SHSP development process included review of safety-related goals, objectives, and strategies in MPO plans. The SHSP guides FDOT, MPOs, and other safety partners in addressing safety and defines a framework for implementation activities to be carried out throughout the State.

The Florida SHSP and the Florida Transportation Plan (FTP) both highlight the commitment to a vision of zero deaths. The FDOT Florida Highway Safety Improvement Program (HSIP) annual report documents the statewide interim performance measures toward that zero deaths vision. As such, the MPO is supporting the adoption of the FDOT statewide HSIP interim safety performance measures and FDOT's 2018 safety targets, which set the target at "0" for each performance measure to reflect the Department's goal of zero deaths.

The TIP considers potential projects that fall into specific investment priorities established by the MPO in the Long-Range Transportation Plan (LRTP). For the Lake~Sumter MPO this includes safety programs such as {MPO placeholder for example safety program(s)}.

These programs may include input from the Community Traffic Safety Team (CTST) and/or the Safe Routes to Schools (SRTS) Team and address infrastructure or behavior safety.

Infrastructure examples: Installation of school flashing signals, roadway lighting, traffic calming, traffic signals.

Behavioral safety examples: SRTS education/enforcement activities, pedestrian/bicycle safety education.

The TIP includes specific investment priorities that support all of the MPO's goals including safety, using a prioritization and project selection process established in the LRTP. This process evaluates projects that have an anticipated effect of reducing both fatal and injury crashes. The MPO's goal of reducing fatal and serious injury crashes is linked to this investment plan and the process used in prioritizing the projects is consistent with federal requirements. The MPO will continue to coordinate with FDOT and transit providers to take action on the additional targets and other requirements of the federal performance management process.

Alternative Language for the final paragraphs: The Florida SHSP and the Florida Transportation Plan (FTP) both highlight the commitment to a vision of zero deaths. The FDOT Florida Highway Safety Improvement Program (HSIP) annual report documents the statewide interim performance measures toward that zero deaths vision. As such, the MPO acknowledges FDOT statewide HSIP interim safety performance measures and FDOT's 2018 safety targets, which set the target at "0" for each performance measure to reflect the Department's goal of zero deaths. However, the MPO is setting its safety performance targets based upon data collected within the MPO planning area for previous years related to safety performance measures. The 2018 targets are documented in the LRTP (state that if this action has occurred) and stated here as: Fatalities – ###; Serious Injuries – ###; Nonmotorized Fatalities and Serious Injuries - ###; Rate of Fatalities per 100M Vehicle Miles Traveled (VMT) - ###; and Rate of Serious Injuries per 100M VMT - ###. {MPO INSERTS their targets for the "###"}

The TIP considers potential projects that fall into specific investment programs established by the MPO. For the [insert name] MPO this includes safety programs such as {MPO placeholder for example safety program(s)}.

These programs may include input from the Community Traffic Safety Team (CTST) and/or the Safe Routes to Schools (SRTS) Team and address infrastructure or behavior safety.

Infrastructure examples: Installation of school flashing signals, roadway lighting, traffic calming, traffic signals.

Behavioral safety examples: SRTS education/enforcement activities, pedestrian/bicycle safety education.

The TIP includes specific investment projects that support all of the MPOs goals including safety, using a prioritization and project selection process. The TIP prioritization process evaluates projects that have an anticipated effect of reducing both fatal and injury crashes. The MPO's goal of reducing fatal and serious injury crashes is linked to this investment plan and the process used in prioritizing the projects is consistent with federal requirements.

The MPO will continue to coordinate with FDOT and transit providers to take action on the additional targets and other requirements of the federal performance management process.

Potential modification examples to TIP prioritization sentence:

The TIP prioritization process continues to evaluate projects that have an anticipated effect of reducing both fatal and injury crashes.

The revised TIP prioritization process evaluates projects that have an anticipated effect of reducing both fatal and injury crashes.

The TIP prioritization process continues to use a data-driven method to evaluate projects that have an anticipated effect of reducing both fatal and injury crashes.

The TIP prioritization process uses stakeholder input as a criterion to evaluate projects that have an anticipated effect of reducing both fatal and injury crashes.

The TIP prioritization process continues to use a data-driven method and stakeholder input to evaluate projects that have an anticipated effect of reducing both fatal and injury crashes.

ABBREVIATIONS AND ACRONYMS

Funding Codes:

FED	Federal Funding
STA	State Funding
LOC	Local Funding
PRV	Private Funding

Project Phase Abbreviations:

ADM	Administration
CAP	Capital
CST	Construction – highway project phase
ENV	Environmental Mitigation – FDOT highway project phase pertaining to filing permits with the St. Johns Water management District and the Florida Department of Environmental Protection regarding the acquisition of environmentally sensitive land for highway improvements
INC	Incentive funds paid to contractors by FDOT for early project completion
MNT	Maintenance
MISC	Miscellaneous
OPS	Operations
PD&E	Project Development and Environment Study – project phase scheduled prior to preliminary engineering for Highway projects
PE	Preliminary Engineering (design) – highway project phase
PLN	Planning
ROW	Right-of-Way Acquisition
RRU	Relocation of Railroad Utilities

Agency and Committee Abbreviations

BPAC	Bicycle/Pedestrian Advisory Committee
CAC	Citizens' Advisory Committee
FAA	Federal Aviation Administration – provides up to 75% of total project cost for new airport facilities under existing Airport Development Aid Program
FDOT	Florida Department of Transportation
FHWA	Federal Highway Administration
FTA	Federal Transit Administration
MPO	Metropolitan Planning Organization
TAC	Technical Advisory committee
TDCB	Transportation Disadvantaged Coordinating Board

Miscellaneous Abbreviations

CFR	Code of Federal Regulations
CMS	Congestion Management System – projects that improve the traffic flow on existing roadways without adding lanes to the roadways. May include such projects as intersection improvements, adding turn lanes, etc.
CR	County Road
DEIS	Draft Environmental Impact Statement
FEIS	Final Environmental Impact Statement
HOV	High-Occupancy Vehicle – special lanes on a limited access freeway set aside for vehicles with two or more occupants during morning and afternoon peak travel times
ISTEA	Intermodal Surface Transportation Efficiency Act of 1991
MIS	Major Investment Study – a study that identifies potential highway and transit improvements for a major transportation corridor
SAFETEA-LU	Safe Accountable Flexible Efficient Transportation Equity Act: A Legacy for Users (Reauthorization of TEA-21)
SR	State Road
TD	Transportation Disadvantaged – those person requiring special transportation services due to physical, mental, or economic disadvantages
TEA-21	Transportation Equity Act for the 21st Century (Reauthorization of ISTEA)
TIP	Transportation Improvement Program
US	US Route

Section 1 - Transportation Planning

DRAFT

Phase	Fund Source	2018/19	2019/20	2020/21	2021/22	2022/23	Total
FM# 4314001 LAKE-SECTION 5303 LAKE-SUMTER MPO PLANNING STUDIES					Length: 0.000 mi	*Non-SIS*	
Type of Work: PTO STUDIES					Lead Agency: LSMPO		
					LRTP#: pg.11		
PLN	DU	56,968	58,677	64,545	0	0	180,190
PLN	DPTO	7,121	7,833	8,567	0	0	23,521
PLN	LF	7,121	7,833	8,567	0	0	23,521
Total		71,210	74,343	81,679	0	0	227,232
<i>Prior Years Cost</i>		<i>274,398</i>	<i>Future Years Cost</i>	<i>0</i>	<i>Total Project Cost</i>		<i>501,630</i>
FM# 4358591 WEST SR 50 FROM SUMTER /HERNANDO COUNTY LINE TO CR33 LAKE COUNTY					Length: 19.892 mi	*Non-SIS*	
Type of Work: CORRIDOR/SUBAREA PLANNING					Lead Agency: FDOT		
WEST SR50 FRM SUMTER /HERNANDO COUNTY LINE TO CR33 LAKE COUNTY					LRTP#: pg 11		
PE	DIH	0	5,000	0	0	0	5,000
PE	DDR	0	2,500,000	0	0	0	2,500,000
Total		0	2,505,000	0	0	0	2,505,000
<i>Prior Years Cost</i>		<i>2,268,259</i>	<i>Future Years Cost</i>	<i>0</i>	<i>Total Project Cost</i>		<i>4,773,259</i>
FM# 4358593 SR 50 FROM HERNDO/SUMTER COUNTY LINE TO WEST OF CR 757					Length: 2.046 mi	*SIS*	
Type of Work: PRELIMINARY ENGINEERING					Lead Agency: Managed by FDOT		
					LRTP#: pg. 11		
ENV	DDR	0	2,550,000	0	0	0	2,550,000
Total		0	2,550,000	0	0	0	2,550,000
<i>Prior Years Cost</i>		<i>2,020,000</i>	<i>Future Years Cost</i>	<i>0</i>	<i>Total Project Cost</i>		<i>4,570,000</i>
FM# 4358594 SR 50 FROM EAST OF CR 757 TO THE SUMTER/LAKE COUNTY LINE					Length: 8.585 mi	*Non-SIS*	
Type of Work: PRELIMINARY ENGINEERING					Lead Agency: Managed by FDOT		
					LRTP#: pg. 11		
ENV	DDR	0	5,400,000	0	0	0	5,400,000
Total		0	5,400,000	0	0	0	5,400,000
<i>Prior Years Cost</i>		<i>7,050,000</i>	<i>Future Years Cost</i>	<i>0</i>	<i>Total Project Cost</i>		<i>12,450,000</i>

Phase	Fund Source	2018/19	2019/20	2020/21	2021/22	2022/23	Total
FM# 4358595 SR 50 FROM SUMTER/LAKE COUNTY LINE TO CR 33					Length: 4.293 mi	*SIS*	
Type of Work: PRELIMINARY ENGINEERING					Lead Agency: Managed by FDOT		
					LRTP#: pg. 50		
ENV	DDR	0	524,000	0	0	0	524,000
	Total	0	524,000	0	0	0	524,000
<i>Prior Years Cost</i>		5,380,000	<i>Future Years Cost</i>	0	<i>Total Project Cost</i>		5,904,000
FM# 4363651 ITS ARCHITECTURE STUDY COUNTYWIDE					Length: .000	*Non-SIS*	
Type of Work: ITS COMMUNICATION SYSTEM					Lead Agency: Sumter County		
					LRTP#: pg.12,58		
PE	CIGP	100,000	0	0	0	0	100,000
PE	LF	100,000	0	0	0	0	100,000
	Total	200,000	0	0	0	0	200,000
<i>Prior Years Cost</i>		200,000	<i>Future Years Cost</i>	0	<i>Total Project Cost</i>		400,000
FM# 4393292 LAKE SUMTER URBAN AREA FY 2018/2019-2019/2020 UPWP					Length: 0.000 mi	*Non-SIS*	
Type of Work: TRANSPORTATION PLANNING					Lead Agency: Responsible Agency Not Available		
					LRTP#: N/A		
PLN	PL	559,753	568,795	0	0	0	1,128,548
	Total	559,753	568,795	0	0	0	1,128,548
<i>Prior Years Cost</i>		0	<i>Future Years Cost</i>	0	<i>Total Project Cost</i>		1,128,548
FM# 4393293 LAKE SUMTER URBAN AREA FY 2020/2021-2021/2022 UPWP					Length: 0.000 mi	*Non-SIS*	
Type of Work: TRANSPORTATION PLANNING					Lead Agency: Responsible Agency Not Available		
					LRTP#: N/A		
PLN	PL	0	0	568,795	568,795	0	1,137,590
	Total	0	0	568,795	568,795	0	1,137,590
<i>Prior Years Cost</i>		0	<i>Future Years Cost</i>	0	<i>Total Project Cost</i>		1,137,590

Phase	Fund Source	2018/19	2019/20	2020/21	2021/22	2022/23	Total
FM# 4408011 LAKE-SUMTER MPO PLANNING STUDIES					Length: 0.000 mi	*Non-SIS*	
Type of Work: PTO STUDIES					Lead Agency: MANAGED BY LAKE SUMTER MPO		
					LRTP#: N/A		
PLN	DU	0	0	0	70,589	213,736	284,325
PLN	DPTO	0	0	0	9,322	26,717	36,039
PLN	LF	0	0	0	9,322	26,717	36,039
	Total	0	0	0	89,233	267,170	356,403
	<i>Prior Years Cost</i>	<i>0</i>	<i>Future Years Cost</i>	<i>0</i>		<i>Total Project Cost</i>	<i>356,403</i>

DRAFT

Section 2 - Roadway Capacity

DRAFT

Phase	Fund Source	2018/19	2019/20	2020/21	2021/22	2022/23	Total
FM# 2382752 SR 46 / US 441 FROM W OF US 441 TO E OF VISTA VIEW LANE					Length: 1.185 mi	*Non-SIS*	
Type of Work: ADD LANES & RECONSTRUCT					Lead Agency: City of Mount Dora		
					L RTP#: pg.11		
ROW	DDR	1,141,097	0	0	0	0	1,141,097
CST	DDR	1,231,833	74,426	0	0	0	1,306,259
Total		2,372,930	74,426	0	0	0	2,447,356
<i>Prior Years Cost</i>		50,758,336	<i>Future Years Cost</i>		0	<i>Total Project Cost</i>	
						53,205,692	
FM# 2382753 SR 46 FROM EAST OF VISTA VIEW LANE TO EAST OF ROUND LAKE ROAD					Length: 1.042 mi	*Non-SIS*	
Type of Work: ADD LANES & RECONSTRUCT					Lead Agency: FDOT		
					L RTP#: pg.7,11		
Add Lanes and Reconstruct From:East of Vista View Lane To:East of Round Lake Road							
CST	DS	157,136	0	0	0	0	157,136
CST	DDR	0	35,634	0	0	0	35,634
Total		157,136	35,634	0	0	0	192,770
<i>Prior Years Cost</i>		15,778,912	<i>Future Years Cost</i>		0	<i>Total Project Cost</i>	
						15,971,682	
FM# 2382757 SR 429/46 (WEKIVA PKWY) FROM W OF OLD MCDONALD RD TO E OF WEKIVA RIVER RD					Length: 4.924 mi	*SIS*	
Type of Work: NEW ROAD CONSTRUCTION					Lead Agency: Managed by FDOT		
					L RTP#: pg.11		
DSB	DS	55,582	0	0	0	0	55,582
ROW	DDR	50,000	1,557,607	0	0	0	1,607,607
DSB	ACSA	1,744,418	0	0	0	0	1,744,418
ROW	ACSL	3,000,000	0	0	0	0	3,000,000
DSB	DDR	0	186,066	0	0	0	186,066
ROW	SL	0	492,393	0	0	0	492,393
Total		4,850,000	2,236,066	0	0	0	7,086,066
<i>Prior Years Cost</i>		302,513,465	<i>Future Years Cost</i>		0	<i>Total Project Cost</i>	
						309,599,531	
FM# 2382758 CR 46A REALIGNMENT FROM SR 46 TO NORTH OF ARUNDEL WAY					Length: 00.00 mi	*Non-SIS*	
Type of Work: NEW ROAD CONSTRUCTION					Lead Agency: FDOT		
					L RTP#: pg.11		
CR 46A Alignment							
CST	SL	0	180,485	0	0	0	180,485
Total		0	180,485	0	0	0	180,485
<i>Prior Years Cost</i>		18,340,474	<i>Future Years Cost</i>		0	<i>Total Project Cost</i>	
						18,520,959	

Phase	Fund Source	2018/19	2019/20	2020/21	2021/22	2022/23	Total
FM# 2383955 SR 500 (US 441) FROM LAKE ELLA RD TO AVENIDA CENTRAL					Length: 4.157 mi	*Non-SIS*	
Type of Work: ADD LANES & RECONSTRUCT					Lead Agency: FDOT		
					LRTP#: pg.11		
WIDEN							
CST	DIH	0	291,180	0	0	0	291,180
CST	CM	0	2,755,409	0	0	0	2,755,409
CST	SL	0	4,150,135	0	0	0	4,150,135
CST	SA	0	20,601,019	0	0	0	20,601,019
CST	DDR	0	10,603,205	0	0	0	10,603,205
Total		0	38,400,948	0	0	0	38,400,948
<i>Prior Years Cost</i>		<i>20,447,537</i>	<i>Future Years Cost</i>	<i>0</i>	<i>Total Project Cost</i>		<i>58,848,485</i>
FM# 2384221 SR 25 (US 27) FROM BOGGY MARSH RD TO LAKE LOUISA RD					Length: 6.686 mi	*SIS*	
Type of Work: ADD LANES & RECONSTRUCT					Lead Agency: FDOT		
					LRTP#: pg.11		
WIDEN							
INC	DDR	990,000	0	0	0	0	990,000
Total		990,000	0	0	0	0	990,000
<i>Prior Years Cost</i>		<i>56,790,160</i>	<i>Future Years Cost</i>	<i>0</i>	<i>Total Project Cost</i>		<i>57,780,160</i>
FM# 4293561 SR 500 (US 441) FROM SR 44 TO NORTH OF SR 46					Length: 2.387 mi	*Non-SIS*	
Type of Work: ADD LANES & REHABILITATE PVMNT					Lead Agency: FDOT		
					LRTP#: pg.11		
PD&E/EMO STUDY							
ROW	DIH	0	15,000	35,000	30,000	0	80,000
ROW	DDR	0	1,120,000	550,000	270,000	278,284	2,218,284
Total		0	1,135,000	585,000	300,000	278,284	2,298,284
<i>Prior Years Cost</i>		<i>3,421,093</i>	<i>Future Years Cost</i>	<i>0</i>	<i>Total Project Cost</i>		<i>5,719,377</i>
FM# 4301321 SR 35 (US 301) FROM C-470 N TO SR 44					Length: 7.702 mi	*Non-SIS*	
Type of Work: ADD LANES & REHABILITATE PVMNT					Lead Agency: FDOT		
					LRTP#: pg.11		
PE	DDR	0	0	5,965,540	0	0	5,965,540
Total		0	0	5,965,540	0	0	5,965,540
<i>Prior Years Cost</i>		<i>3,025,894</i>	<i>Future Years Cost</i>	<i>0</i>	<i>Total Project Cost</i>		<i>8,991,434</i>

Phase	Fund Source	2018/19	2019/20	2020/21	2021/22	2022/23	Total
FM# 4344031 C-478 FROM US 301 TO SR 471							
Type of Work: WIDEN/RESURFACE EXIST LANES							
					Length: 3.309 mi	*Non-SIS*	
					Lead Agency: Sumter County		
					LRTP#: pg.11		
CST	LF	645,811	0	0	0	0	645,811
CST	SCOP	28,033	0	0	0	0	28,033
CST	SCWR	568,919	0	0	0	0	568,919
CST	GRSC	1,112,252	0	0	0	0	1,112,252
Total		2,355,015	0	0	0	0	2,355,015
<i>Prior Years Cost</i>		<i>0</i>	<i>Future Years Cost</i>		<i>0</i>	<i>Total Project Cost</i>	
							<i>2,355,015</i>
FM# 4349121 C-470 FROM CR 527 TO SR 91 (TURNPIKE)							
Type of Work: ADD LANES & REHABILITATE PVMNT							
					Length: 9.019 mi	*Non-SIS*	
					Lead Agency: Managed by FDOT		
					LRTP#: pg.11		
C-470 FROM CR 527 TO SR 91 (Turnpike)							
PE	SN	0	0	526,213	0	0	526,213
PE	SL	0	0	4,617,808	0	0	4,617,808
Total		0	0	5,144,021	0	0	5,144,021
<i>Prior Years Cost</i>		<i>1,378,962</i>	<i>Future Years Cost</i>		<i>0</i>	<i>Total Project Cost</i>	
							<i>6,522,983</i>
FM# 4357851 FLORIDA'S TURNPIKE FROM ORANGE/LAKE C/L TO MINNEOLA (274-279.14) 4TO8LNS W/EX							
Type of Work: ADD LANES & RECONSTRUCT							
					Length: 5.137 mi	*SIS*	
					Lead Agency: Managed by FDOT		
					LRTP#: pg.11		
WIDEN TPK- ORANGE / LAKE C/L TO MINNEOLA INTCHG (MP 274.2 - 279)							
ROW	PKYI	3,689,800	0	0	0	0	3,689,800
PE	PKYI	1,800,000	0	0	0	0	1,800,000
ENV	PKYI	1,260,000	0	0	0	0	1,260,000
RRU	PKBD	0	20,000	0	0	0	20,000
CST	PKBD	0	0	129,907,280	900,000	0	130,807,280
Total		6,749,800	20,000	129,907,280	900,000	0	137,577,080
<i>Prior Years Cost</i>		<i>10,209,393</i>	<i>Future Years Cost</i>		<i>0</i>	<i>Total Project Cost</i>	
							<i>147,786,473</i>

Phase	Fund Source	2018/19	2019/20	2020/21	2021/22	2022/23	Total
FM# 4357861 FLORIDA'S TURNPIKE FROM MINNEOLA INTCHG TO LEESBURG NORTH INTCHG (MP279-289.3)(4-6)					Length: 10.327 mi		*SIS*
Type of Work: ADD LANES & RECONSTRUCT					Lead Agency: Managed by FDOT		
					LRTP#: pg.11		
PE	PKYI	22,236,682	0	0	0	0	22,236,682
ENV	PKYI	1,060,000	0	0	0	0	1,060,000
ROW	PKYI	0	0	3,464,700	0	0	3,464,700
RRU	PKBD	0	0	0	2,450,000	0	2,450,000
CST	PKED	0	0	0	0	10,000,000	10,000,000
CST	PKBD	0	0	0	0	275,435,604	275,435,604
Total		23,296,682	0	3,464,700	2,450,000	285,435,604	314,646,986
<i>Prior Years Cost</i>		68,778	<i>Future Years Cost</i>		7,240,000	<i>Total Project Cost</i>	
							321,955,764
FM# 4357871 FLORIDA'S TURNPIKE FROM LEESBURG NORTH INTCHG TO LAKE/SUMTER C/L(MP289.3-297.9)(4-8)					Length: 8.549 mi		*SIS*
Type of Work: ADD LANES & RECONSTRUCT					Lead Agency: Lake County		
					LRTP#: pg.11		
WIDEN TPK- LEESBURG NORTH INTCHG TO LAKE/SUMTER C/L (MP 289.3 - 297.9)							
PE	PKYI	0	8,132,448	0	0	0	8,132,448
PE	PKED	0	10,000,000	0	0	0	10,000,000
ENV	PKYI	0	0	1,060,000	0	0	1,060,000
ROW	PKYI	0	0	0	3,118,400	0	3,118,400
Total		0	18,132,448	1,060,000	3,118,400	0	22,310,848
<i>Prior Years Cost</i>		7,252	<i>Future Years Cost</i>		244,783,919	<i>Total Project Cost</i>	
							267,102,019
FM# 4357881 FLORIDA'S TURNPIKE FROM LAKE/ SUMTER C/L TO CR 468 INTCHG (MP297.9-301.4)(4TO6)					Length: 3.436 mi		*SIS*
Type of Work: ADD LANES & RECONSTRUCT					Lead Agency: Managed by FDOT		
					LRTP#: pg.11		
WIDEN TURNPIKE FROM LAKE/SUMTER COUNTY LINE TO CR 468 INTERCHANGE (MP 297.9 - 301.4)							
PE	PKYI	0	6,221,346	0	0	0	6,221,346
ENV	PKYI	0	0	75,000	0	0	75,000
ROW	PKYI	0	0	0	1,333,600	0	1,333,600
Total		0	6,221,346	75,000	1,333,600	0	7,629,946
<i>Prior Years Cost</i>		6,855	<i>Future Years Cost</i>		84,085,298	<i>Total Project Cost</i>	
							91,722,099

Phase	Fund Source	2018/19	2019/20	2020/21	2021/22	2022/23	Total
FM# 4357891 FLORIDA'S TURNPIKE FROM CR468 INTCHG TO I-75 INTCHG (MP 301.4 - 308.9)(4 TO 6)					Length: 7.234 mi		*SIS*
Type of Work: ADD LANES & RECONSTRUCT					Lead Agency: Managed by FDOT		
WIDEN TPK FROM CR468 INTCHG TO I-75 INTCHG (MP 301.4 - 308.9)					LRTP#: pg.11		
PE	PKYI	0	0	6,238,620	0	0	6,238,620
PE	PKED	0	0	5,000,000	0	0	5,000,000
ENV	PKYI	0	0	0	1,525,000	0	1,525,000
ROW	PKYI	0	0	0	0	2,334,100	2,334,100
Total		0	0	11,238,620	1,525,000	2,334,100	15,097,720
<i>Prior Years Cost</i>		5,369	<i>Future Years Cost</i>		156,262,336	<i>Total Project Cost</i>	
							171,365,425
FM# 4361271 SR-33 AT CR 561					Length: 0.401 mi		*Non-SIS*
Type of Work: ADD LEFT TURN LANE(S)					Lead Agency: Managed by FDOT		
					LRTP#: pg.11		
CST	DIH	105,663	0	0	0	0	105,663
CST	DDR	782,893	0	0	0	0	782,893
Total		888,556	0	0	0	0	888,556
<i>Prior Years Cost</i>		451,024	<i>Future Years Cost</i>		0	<i>Total Project Cost</i>	
							1,339,580

DRAFT

Section 3 - Operations and Management

DRAFT

Phase	Fund Source	2018/19	2019/20	2020/21	2021/22	2022/23	Total
FM# 4130193 TRAFFIC ENGINEERING CONTRACTS LAKE COUNTY					Length: 0.000 mi	*Non-SIS*	
Type of Work: TRAFFIC SIGNALS					Lead Agency: Lake County		
					LRTP#: pg.11		
OPS	DDR	307,605	307,605	0	0	0	615,210
	Total	307,605	307,605	0	0	0	615,210
<i>Prior Years Cost</i>		3,619,101	<i>Future Years Cost</i>	0	<i>Total Project Cost</i>		4,234,311
FM# 4130198 TRAFFIC ENGINEERING CONTRACTS SUMTER COUNTY					Length: 0.000 mi	*Non-SIS*	
Type of Work: TRAFFIC SIGNALS					Lead Agency: FDOT		
					LRTP#: pg.11		
OPS	DDR	62,253	62,253	0	0	0	124,506
	Total	62,253	62,253	0	0	0	124,506
<i>Prior Years Cost</i>		704,536	<i>Future Years Cost</i>	0	<i>Total Project Cost</i>		829,042
FM# 4273051 RESERVE BOX-VILLAGES (LAKE/SUMTER) OPERATION & SAFETY IMPROVEMENTS						*Non-SIS*	
Type of Work: FUNDING ACTION					Lead Agency: FDOT		
					LRTP#: pg.11		
CST	LFP	416,149	0	0	0	0	416,149
	Total	416,149	0	0	0	0	416,149
<i>Prior Years Cost</i>		0	<i>Future Years Cost</i>	0	<i>Total Project Cost</i>		416,149
FM# 4361501 CR 455 AT OLD HIGHWAY 50 EAST					Length: 0.001 mi	*Non-SIS*	
Type of Work: TRAFFIC SIGNALS					Lead Agency: MANAGED BY LAKE COUNTY		
					LRTP#: pg.11		
CST	HSP	307,634	0	0	0	0	307,634
	Total	307,634	0	0	0	0	307,634
<i>Prior Years Cost</i>		0	<i>Future Years Cost</i>	0	<i>Total Project Cost</i>		307,634
FM# 4373291 SR 44 WEST OF US 301					Length: 0.445 mi	*Non-SIS*	
Type of Work: TRAFFIC OPS IMPROVEMENT					Lead Agency: Managed by FDOT		
					LRTP#: N/A		
CST	DIH	70,107	95,482	0	0	0	165,589
CST	DS	0	813,551	0	0	0	813,551
	Total	70,107	909,033	0	0	0	979,140
<i>Prior Years Cost</i>		153,952	<i>Future Years Cost</i>	0	<i>Total Project Cost</i>		1,133,092

Phase	Fund Source	2018/19	2019/20	2020/21	2021/22	2022/23	Total
FM# 4374861 HANCOCK ROAD AT NORTH RIDGE BOULEVARD					Length: 0.070 mi		*Non-SIS*
Type of Work: TRAFFIC SIGNALS					Lead Agency: Lake County		
TRAFFIC SIGNAL HANCOCK ROAD AT NORTH RIDGE BOULEVARD					LRTP#: pg.11		
CST	HSP	348,626	0	0	0	0	348,626
Total		348,626	0	0	0	0	348,626
<i>Prior Years Cost</i>		<i>41,883</i>	<i>Future Years Cost</i>		<i>0</i>	<i>Total Project Cost</i>	
							390,509
FM# 4385623 I-75 (SR 93) AT SUMTER COUNTY SOUTHBOUND REST AREA					Length: 0.439 mi		*SIS*
Type of Work: REST AREA					Lead Agency: Managed by FDOT		
					LRTP#: N/A		
CST	DRA	0	0	18,418,606	0	0	18,418,606
CST	DIH	0	0	54,050	0	0	54,050
Total		0	0	18,472,656	0	0	18,472,656
<i>Prior Years Cost</i>		<i>1,553,292</i>	<i>Future Years Cost</i>		<i>0</i>	<i>Total Project Cost</i>	
							20,025,948
FM# 4394151 CITRUS TOWER BOULEVARD AT MOHAWK ROAD					Length: 0.026 mi		*Non-SIS*
Type of Work: TRAFFIC SIGNALS					Lead Agency: MANAGED BY LAKE COUNTY		
					LRTP#: pg.11		
CST	HSP	0	246,538	0	0	0	246,538
Total		0	246,538	0	0	0	246,538
<i>Prior Years Cost</i>		<i>47,145</i>	<i>Future Years Cost</i>		<i>0</i>	<i>Total Project Cost</i>	
							293,683

Section 4A - Safety - Resurfacing

DRAFT

Phase	Fund Source	2018/19	2019/20	2020/21	2021/22	2022/23	Total
FM# 4354931 WEST STREET FROM SR 48 TO CR 476					Length: 0.753 mi		*Non-SIS*
Type of Work: RESURFACING					Lead Agency: Sumter County		
					LRTP#: pg.10,11		
CST	LFP	0	98,500	0	0	0	98,500
CST	CIGP	0	98,500	0	0	0	98,500
Total		0	197,000	0	0	0	197,000
<i>Prior Years Cost</i>		<i>0</i>	<i>Future Years Cost</i>	<i>0</i>	<i>Total Project Cost</i>		<i>197,000</i>
FM# 4371672 FLORIDA'S TURNPIKE MAINLINE FROM MP 284.4 TO 285.5					Length: 1.000 mi		*SIS*
Type of Work: NEW ROAD CONSTRUCTION					Lead Agency: Managed by FDOT		
ROADWAY SETTLEMENT IMPROVEMENTS TURNPIKE MAINLINE MP 284.4 TO 285.5							
CST	PKYR	1,168,670	0	0	0	0	1,168,670
Total		1,168,670	0	0	0	0	1,168,670
<i>Prior Years Cost</i>		<i>473,706</i>	<i>Future Years Cost</i>	<i>0</i>	<i>Total Project Cost</i>		<i>1,642,376</i>
FM# 4373271 SR 25/US 27 FROM OBRIEN ROAD TO ARLINGTON RIDGE (S OF CR 48)					Length: 8.182 mi		*SIS*
Type of Work: RESURFACING					Lead Agency: Managed by FDOT		
					LRTP#: pg.10,11		
CST	DS	4,775,527	0	0	0	0	4,775,527
CST	SA	2,584,075	0	0	0	0	2,584,075
CST	DDR	4,678,541	0	0	0	0	4,678,541
Total		12,038,143	0	0	0	0	12,038,143
<i>Prior Years Cost</i>		<i>455,889</i>	<i>Future Years Cost</i>	<i>0</i>	<i>Total Project Cost</i>		<i>12,494,032</i>
FM# 4373481 SR 44 FROM 1900' WEST OF CR 437 TO VOLUSIA COUNTY LINE					Length: 16.11 mi		*Non-SIS*
Type of Work: RESURFACING					Lead Agency: Managed by FDOT		
					LRTP#: pg.10,11		
CST	DS	942,910	0	0	0	0	942,910
CST	SL	133,640	0	0	0	0	133,640
CST	ACSL	853,240	0	0	0	0	853,240
CST	SA	10,125,315	0	0	0	0	10,125,315
Total		12,055,105	0	0	0	0	12,055,105
<i>Prior Years Cost</i>		<i>1,475,006</i>	<i>Future Years Cost</i>	<i>0</i>	<i>Total Project Cost</i>		<i>13,530,111</i>

Phase	Fund Source	2018/19	2019/20	2020/21	2021/22	2022/23	Total
FM# 4379381 SR 19/S CENTRAL AVE FROM N OF CR 450A TO S OF CR 450/W OCALA STREET					Length: 1.090 mi		*Non-SIS*
Type of Work: RESURFACING					Lead Agency: Managed by FDOT		
					LRTP#: N/A		
CST	DIH	0	5,275	0	0	0	5,275
CST	DDR	0	2,208,884	0	0	0	2,208,884
Total		0	2,214,159	0	0	0	2,214,159
<i>Prior Years Cost</i>		<i>150,000</i>	<i>Future Years Cost</i>	<i>0</i>	<i>Total Project Cost</i>		<i>2,364,159</i>
FM# 4391381 SR 19 (BAY STREET) FROM W NORTON AVE TO LAKE SAUNDERS DR					Length: 1.699 mi		*Non-SIS*
Type of Work: RESURFACING					Lead Agency: Managed by FDOT		
					LRTP#: pg. 10, 11		
CST	DS	0	726,365	0	0	0	726,365
CST	DIH	0	5,275	0	0	0	5,275
CST	DDR	0	3,634,913	0	0	0	3,634,913
Total		0	4,366,553	0	0	0	4,366,553
<i>Prior Years Cost</i>		<i>384,458</i>	<i>Future Years Cost</i>	<i>0</i>	<i>Total Project Cost</i>		<i>4,751,011</i>
FM# 4391391 SR 25 FROM ARLINGTON RIDGE BLVD TO CR 33					Length: 1.633 mi		*Non-SIS*
Type of Work: RESURFACING					Lead Agency: Managed by FDOT		
					LRTP#: pg. 10, 11		
CST	DIH	0	5,275	0	0	0	5,275
CST	DDR	0	3,416,097	0	0	0	3,416,097
CST	NHRE	0	341,535	0	0	0	341,535
Total		0	3,762,907	0	0	0	3,762,907
<i>Prior Years Cost</i>		<i>561,797</i>	<i>Future Years Cost</i>	<i>0</i>	<i>Total Project Cost</i>		<i>4,324,704</i>
FM# 4392231 C-478 FROM SR 471 TO CENTER HILL CITY LIMITS					Length: 5.568 mi		*Non-SIS*
Type of Work: RESURFACING					Lead Agency: Sumter County		
					LRTP#: pg. 10, 11		
CST	SCED	0	0	512,821	0	0	512,821
CST	SCOP	0	0	489,809	0	0	489,809
CST	SCWR	0	0	482,191	0	0	482,191
CST	GRSC	0	0	215,179	0	0	215,179
Total		0	0	1,700,000	0	0	1,700,000
<i>Prior Years Cost</i>		<i>250,774</i>	<i>Future Years Cost</i>	<i>0</i>	<i>Total Project Cost</i>		<i>1,950,774</i>

Phase	Fund Source	2018/19	2019/20	2020/21	2021/22	2022/23	Total
FM# 4402941 FLORIDA'S TURNPIKE FROM MP 279.0 TO MP 287.7					Length: 8.700 mi		*SIS*
Type of Work: RESURFACING					Lead Agency: Managed by FDOT		
					LRTP#: pg. 10, 11		
PE	PKYR	2,145,978	0	0	0	0	2,145,978
CST	PKYR	0	21,702,853	0	0	0	21,702,853
Total		2,145,978	21,702,853	0	0	0	23,848,831
<i>Prior Years Cost</i>		<i>7,823</i>	<i>Future Years Cost</i>	<i>0</i>	<i>Total Project Cost</i>		<i>23,856,654</i>
FM# 4402951 FLORIDA'S TURNPIKE LAKE COUNTY MP 288.7-297.9 SOUTHBOUND ONLY					Length: 9.376 mi		*SIS*
Type of Work: RESURFACING					Lead Agency: Managed by FDOT		
					LRTP#: pg. 10, 11		
PE	PKYR	0	1,436,612	0	0	0	1,436,612
CST	PKYR	0	0	14,883,643	0	0	14,883,643
Total		0	1,436,612	14,883,643	0	0	16,320,255
<i>Prior Years Cost</i>		<i>3,104</i>	<i>Future Years Cost</i>	<i>0</i>	<i>Total Project Cost</i>		<i>16,323,359</i>

DRAFT

Section 4B - Safety - Lighting

DRAFT

Phase	Fund Source	2018/19	2019/20	2020/21	2021/22	2022/23	Total
FM# 4136151 LIGHTING AGREEMENTS					Length: 0.000 mi	*Non-SIS*	
Type of Work: LIGHTING					Lead Agency: FDOT		
					LRTP#: pg.11,22,23,24		
MNT	D	336,054	346,139	356,522	367,215	378,228	1,784,158
	Total	336,054	346,139	356,522	367,215	378,228	1,784,158
<i>Prior Years Cost</i>		2,868,453	<i>Future Years Cost</i>	0	<i>Total Project Cost</i>		4,652,611
FM# 4136152 LIGHTING AGREEMENTS					Length: 0.000 mi	*Non-SIS*	
Type of Work: LIGHTING					Lead Agency: FDOT		
					LRTP#: pg.11,22,23,24		
MNT	D	36,662	37,761	38,894	40,061	41,263	194,641
	Total	36,662	37,761	38,894	40,061	41,263	194,641
<i>Prior Years Cost</i>		362,285	<i>Future Years Cost</i>	0	<i>Total Project Cost</i>		556,926
FM# 4397011 LAKESHORE DRIVE FROM HULL DRIVE TO HARDER ROAD/LAKE SUSAN COURT					Length: 0.800 mi	*Non-SIS*	
Type of Work: SAFETY PROJECT					Lead Agency: MANAGED BY LAKE COUNTY		
					LRTP#: pg. 11,22,23,24		
CST	HSP	0	502,599	0	0	0	502,599
	Total	0	502,599	0	0	0	502,599
<i>Prior Years Cost</i>		193,400	<i>Future Years Cost</i>	0	<i>Total Project Cost</i>		695,999
FM# 4397021 LAKE LOUISA ROAD FROM NW OF GLEASON WAY TO SOUTH OF HAMMOCK RIDGE ROAD					Length: 3.290 mi	*Non-SIS*	
Type of Work: SAFETY PROJECT					Lead Agency: MANAGED BY LAKE COUNTY		
					LRTP#: pg. 11, 22, 23, 24		
CST	HSP	0	343,379	0	0	0	343,379
	Total	0	343,379	0	0	0	343,379
<i>Prior Years Cost</i>		167,200	<i>Future Years Cost</i>	0	<i>Total Project Cost</i>		510,579
FM# 4399121 CR 478 FROM US 301 TO CR 734					Length: 9.260 mi	*Non-SIS*	
Type of Work: SAFETY PROJECT					Lead Agency: MANAGED BY SUMTER COUNTY		
					LRTP#: pg. 11, 22, 23, 24		
CST	HSP	0	992,377	0	0	0	992,377
	Total	0	992,377	0	0	0	992,377
<i>Prior Years Cost</i>		195,065	<i>Future Years Cost</i>	0	<i>Total Project Cost</i>		1,187,442

Section 4C - Safety - Guardrail

DRAFT

Phase	Fund Source	2018/19	2019/20	2020/21	2021/22	2022/23	Total
FM# 4402942 FLORIDA'S TURNPIKE FROM MP 279.0 TO MP 287.7					Length: 8.700 mi		*SIS*
Type of Work: GUARDRAIL					Lead Agency: Managed by FDOT		
					LRTP#: pg.10		
CST	PKYR	0	1,434,075	0	0	0	1,434,075
Total		0	1,434,075	0	0	0	1,434,075
<i>Prior Years Cost</i>		<i>297,817</i>	<i>Future Years Cost</i>	<i>0</i>	<i>Total Project Cost</i>		<i>1,731,892</i>
FM# 4402952 FLORIDA'S TURNPIKE MAINLINE LAKE CNTY MP288.7-297.7 S/B ONLY					Length: 9.376 mi		*SIS*
Type of Work: GUARDRAIL					Lead Agency: Managed by FDOT		
					LRTP#: pg. 10		
PDE	PKYR	400,000	0	0	0	0	400,000
CST	PKYR	0	0	512,026	0	0	512,026
Total		400,000	0	512,026	0	0	912,026
<i>Prior Years Cost</i>		<i>5,970</i>	<i>Future Years Cost</i>	<i>0</i>	<i>Total Project Cost</i>		<i>917,996</i>

DRAFT

Section 4D - Safety - Signing and Pavement Markings

DRAFT

Phase	Fund Source	2018/19	2019/20	2020/21	2021/22	2022/23	Total
FM# 4061103 FLORIDA'S TURNPIKE THERMOPLASTIC FOR I-75/TPK INTCHG MODIF. (NORTHERN TERMINUS) (MP309)					Length: 0.270 mi		*SIS*
Type of Work: SIGNING/PAVEMENT MARKINGS					Lead Agency: Managed by FDOT		
					LRTP#: pg. 10		
CST	PKYI	366,517	0	0	0	0	366,517
	Total	366,517	0	0	0	0	366,517
<i>Prior Years Cost</i>		<i>0</i>	<i>Future Years Cost</i>		<i>0</i>	<i>Total Project Cost</i>	
							366,517
FM# 4374851 CR 473 FROM TREADWAY SCHOOL ROAD TO CR 44					Length: 2.034 mi		*Non-SIS*
Type of Work: PAVE SHOULDERS					Lead Agency: Lake County		
					LRTP#: pg.10		
PAVE SHOULDERS							
CST	HSP	557,348	0	0	0	0	557,348
	Total	557,348	0	0	0	0	557,348
<i>Prior Years Cost</i>		<i>120,000</i>	<i>Future Years Cost</i>		<i>0</i>	<i>Total Project Cost</i>	
							677,348
FM# 4376041 C-462 FROM 1,200 FEET EAST OF NORTH EAST 15th DRIVE TO 500 FEET NORTH OF COUNTY ROAD 228					Length: 0.359 mi		*Non-SIS*
Type of Work: PAVE SHOULDERS					Lead Agency: Sumter County		
					LRTP#: pg. 10		
CST	HSP	569,207	0	0	0	0	569,207
	Total	569,207	0	0	0	0	569,207
<i>Prior Years Cost</i>		<i>166,502</i>	<i>Future Years Cost</i>		<i>0</i>	<i>Total Project Cost</i>	
							735,709

Section 5A - Maintenance Bridges

DRAFT

Phase	Fund Source	2018/19	2019/20	2020/21	2021/22	2022/23	Total
FM# 2383192 SR 19 OVER LITTLE LAKE HARRIS BRIDGE # 110026					Length: 0.592 mi		*Non-SIS*
Type of Work: BRIDGE REPLACEMENT					Lead Agency: FDOT		
					LRTP#: pg.10,11		
DSB	SL	41,120	0	0	0	0	41,120
Total		41,120	0	0	0	0	41,120
<i>Prior Years Cost</i>		<i>27,345,559</i>	<i>Future Years Cost</i>		<i>0</i>	<i>Total Project Cost</i>	
							<i>27,386,679</i>
FM# 4295561 SR 44 BRIDGE# 110063					Length: 0.099 mi		*Non-SIS*
Type of Work: BRIDGE REPLACEMENT					Lead Agency: Lake County		
					LRTP#: pg.10,11		
SR 44 OVER ST JOHNS RIVER - BRIDGE# 110063							
ROW	ACBR	490,000	1,010,000	357,850	317,130	0	2,174,980
ROW	DIH	30,000	20,000	0	0	0	50,000
CST	DDR	0	669,271	0	0	0	669,271
CST	ACBR	0	29,274,651	0	0	0	29,274,651
Total		520,000	30,973,922	357,850	317,130	0	32,168,902
<i>Prior Years Cost</i>		<i>5,289,849</i>	<i>Future Years Cost</i>		<i>0</i>	<i>Total Project Cost</i>	
							<i>37,458,751</i>
FM# 4338601 SR 33 BRIDGE# 110002 OVER GREEN SWAMP					Length: 0.027 mi		*Non-SIS*
Type of Work: BRIDGE REPLACEMENT					Lead Agency: Managed by FDOT		
					LRTP#: pg.10,11		
CST	ACBR	1,559,420	0	0	0	0	1,559,420
CST	BNBR	1,257,510	0	0	0	0	1,257,510
Total		2,816,930	0	0	0	0	2,816,930
<i>Prior Years Cost</i>		<i>1,019,166</i>	<i>Future Years Cost</i>		<i>0</i>	<i>Total Project Cost</i>	
							<i>3,836,096</i>

Section 5C - Maintenance Landscaping

DRAFT

Phase	Fund Source	2018/19	2019/20	2020/21	2021/22	2022/23	Total
FM# 4371141 SR 46 FROM EAST OF VISTA VIEW LANE TO EAST OF ROUND LAKE ROAD					Length: 2.144 mi	*Non-SIS*	
Type of Work: LANDSCAPING					Lead Agency: Managed by FDOT		
					L RTP#: pg.10,11		
CST	DS	0	42,200	0	0	0	42,200
CST	DIH	0	26,835	0	0	0	26,835
CST	DDR	0	233,629	0	0	0	233,629
Total		0	302,664	0	0	0	302,664
<i>Prior Years Cost</i>		<i>0</i>	<i>Future Years Cost</i>	<i>0</i>	<i>Total Project Cost</i>		<i>302,664</i>
FM# 4371142 SR 46 FROM WEST OF US 441 TO EAST OF VISTA VIEW LANE					Length: 2.285 mi	*Non-SIS*	
Type of Work: LANDSCAPING					Lead Agency: Managed by FDOT		
					L RTP#: pg.10,11		
CST	DS	0	52,750	0	0	0	52,750
CST	DIH	0	78,219	0	0	0	78,219
CST	DDR	0	839,448	0	0	0	839,448
Total		0	970,417	0	0	0	970,417
<i>Prior Years Cost</i>		<i>0</i>	<i>Future Years Cost</i>	<i>0</i>	<i>Total Project Cost</i>		<i>970,417</i>
FM# 4371145 CR 46A FROM SR 46 TO N OF ARUNDEL WAY					Length: 4.705 mi	*Non-SIS*	
Type of Work: LANDSCAPING					Lead Agency: Managed by FDOT		
					L RTP#: pg.10,11		
CST	DS	0	31,650	0	0	0	31,650
CST	SL	0	10,550	0	0	0	10,550
CST	SN	0	576,511	0	0	0	576,511
Total		0	618,711	0	0	0	618,711
<i>Prior Years Cost</i>		<i>0</i>	<i>Future Years Cost</i>	<i>0</i>	<i>Total Project Cost</i>		<i>618,711</i>
FM# 4371146 SR 46/SR 429 FROM SR 46 TO WEKIVA RIVER RD					Length: 4.924 mi	*SIS*	
Type of Work: LANDSCAPING					Lead Agency: Managed by FDOT		
					L RTP#: pg.10,11		
CST	DIH	0	0	0	22,200	0	22,200
CST	SL	0	0	0	1,121,074	0	1,121,074
CST	SN	0	0	0	1,176,436	0	1,176,436
CST	DDR	0	0	0	205,318	0	205,318
Total		0	0	0	2,525,028	0	2,525,028
<i>Prior Years Cost</i>		<i>0</i>	<i>Future Years Cost</i>	<i>0</i>	<i>Total Project Cost</i>		<i>2,525,028</i>

Section 5D - Maintenance - Routine Maintenance

DRAFT

Phase	Fund Source	2018/19	2019/20	2020/21	2021/22	2022/23	Total
FM# 2447543 VEGETATION AND AESTHETICS AREA WIDE							*Non-SIS*
Type of Work: ROUTINE MAINTENANCE					Lead Agency: FDOT LRTP#: pg.10,11		
MNT	D	1,410,240	1,410,240	1,410,240	1,410,240	1,410,240	7,051,200
	Total	1,410,240	1,410,240	1,410,240	1,410,240	1,410,240	7,051,200
<i>Prior Years Cost</i>		<i>12,262,803</i>	<i>Future Years Cost</i>		<i>0</i>	<i>Total Project Cost</i>	<i>19,314,003</i>
FM# 4171991 LADY LAKE MEMORANDUM OF AGREEMENT							*Non-SIS*
Type of Work: ROUTINE MAINTENANCE					Lead Agency: FDOT LRTP#: pg.10,11		
MNT	D	21,505	21,505	21,505	21,505	21,505	107,525
	Total	21,505	21,505	21,505	21,505	21,505	107,525
<i>Prior Years Cost</i>		<i>318,434</i>	<i>Future Years Cost</i>		<i>0</i>	<i>Total Project Cost</i>	<i>425,959</i>
FM# 4181061 LAKE PRIMARY IN-HOUSE							*Non-SIS*
Type of Work: ROUTINE MAINTENANCE					Lead Agency: FDOT LRTP#: pg.10,11		
MNT	D	1,704,791	1,704,791	1,763,811	1,763,811	1,763,811	8,701,015
	Total	1,704,791	1,704,791	1,763,811	1,763,811	1,763,811	8,701,015
<i>Prior Years Cost</i>		<i>31,816,918</i>	<i>Future Years Cost</i>		<i>0</i>	<i>Total Project Cost</i>	<i>40,517,933</i>
FM# 4181111 SUMTER PRIMARY IN-HOUSE							*Non-SIS*
Type of Work: ROUTINE MAINTENANCE					Length: 0.000 mi Lead Agency: FDOT LRTP#: pg.10,11		
MNT	D	354,283	354,283	361,211	361,211	361,211	1,792,199
	Total	354,283	354,283	361,211	361,211	361,211	1,792,199
<i>Prior Years Cost</i>		<i>3,155,144</i>	<i>Future Years Cost</i>		<i>0</i>	<i>Total Project Cost</i>	<i>4,947,343</i>
FM# 4231131 CITY OF LEESBURG MOA							*Non-SIS*
Type of Work: ROUTINE MAINTENANCE					Lead Agency: FDOT LRTP#: pg.10,11		
MNT	D	11,467	11,467	11,467	11,467	11,467	57,335
	Total	11,467	11,467	11,467	11,467	11,467	57,335
<i>Prior Years Cost</i>		<i>103,071</i>	<i>Future Years Cost</i>		<i>0</i>	<i>Total Project Cost</i>	<i>160,406</i>

Phase	Fund Source	2018/19	2019/20	2020/21	2021/22	2022/23	Total
FM# 4237901 MOA W/ MASCOTTE							*Non-SIS*
Type of Work: ROUTINE MAINTENANCE					Lead Agency: FDOT		
					LRTP#: pg.10,11		
MNT	D	7,520	7,520	7,520	7,520	7,520	37,600
	Total	7,520	7,520	7,520	7,520	7,520	37,600
<i>Prior Years Cost</i>		30,417	<i>Future Years Cost</i>	0	<i>Total Project Cost</i>		68,017
FM# 4271941 MOA W/WILDWOOD							*Non-SIS*
Type of Work: ROUTINE MAINTENANCE					Length: 0.000 mi		
					Lead Agency: FDOT		
					LRTP#: pg.10,11		
MNT	D	13,441	13,441	13,441	13,441	13,441	67,205
	Total	13,441	13,441	13,441	13,441	13,441	67,205
<i>Prior Years Cost</i>		72,378	<i>Future Years Cost</i>	0	<i>Total Project Cost</i>		139,583
FM# 4291571 ASPHALT REPAIR							*Non-SIS*
Type of Work: ROUTINE MAINTENANCE					Lead Agency: FDOT		
					LRTP#: pg.10,11		
MNT	D	344,475	0	0	0	0	344,475
	Total	344,475	0	0	0	0	344,475
<i>Prior Years Cost</i>		4,306,642	<i>Future Years Cost</i>	0	<i>Total Project Cost</i>		4,651,117
FM# 4291762 DRAINAGE REPAIR							*Non-SIS*
Type of Work: ROUTINE MAINTENANCE					Lead Agency: FDOT		
					LRTP#: pg.10,11		
MNT	D	613,800	0	0	0	0	613,800
	Total	613,800	0	0	0	0	613,800
<i>Prior Years Cost</i>		2,897,577	<i>Future Years Cost</i>	0	<i>Total Project Cost</i>		3,511,377
FM# 4291801 UNPAVED SHOULDER REPAIR							*Non-SIS*
Type of Work: ROUTINE MAINTENANCE					Lead Agency: FDOT		
					LRTP#: pg.10,11		
MNT	D	877,609	0	0	0	0	877,609
	Total	877,609	0	0	0	0	877,609
<i>Prior Years Cost</i>		2,239,945	<i>Future Years Cost</i>	0	<i>Total Project Cost</i>		3,117,554

Section 5E - Maintenance - Miscellaneous

DRAFT

Phase	Fund Source	2018/19	2019/20	2020/21	2021/22	2022/23	Total	
FM# 4385622 I-75 (SR 93) SUMTER CO REST AREA FROM N OF SR 50 TO S OF CR 476B					Length: 0.439 mi		*SIS*	
Type of Work: REST AREA					Lead Agency: Managed by FDOT			
					LRTP#: PG. 10, 11			
ENV	DDR	125,000	0	0	0	0	125,000	
	Total	125,000	0	0	0	0	125,000	
<i>Prior Years Cost</i>		1,244,147	<i>Future Years Cost</i>		18,846,334	<i>Total Project Cost</i>		20,215,481

DRAFT

Section 6 - Bicycle/Pedestrian & Trails

DRAFT

Phase	Fund Source	2018/19	2019/20	2020/21	2021/22	2022/23	Total
FM# 4225703 SOUTH LAKE TRAIL PH IIIB FROM SR 33 (CRITTENGEN ST) TO SILVER EAGLE RD					Length: 0.000 mi	*Non-SIS*	
Type of Work: BIKE PATH/TRAIL					Lead Agency: Managed by FDOT		
					LRTP#: pg.10,11		
ROW	DIH	0	0	0	50,000	50,000	100,000
ROW	DDR	0	0	0	1,460,000	0	1,460,000
ROW	SL	0	0	0	0	1,620,000	1,620,000
Total		0	0	0	1,510,000	1,670,000	3,180,000
<i>Prior Years Cost</i>		<i>914,909</i>	<i>Future Years Cost</i>		<i>0</i>	<i>Total Project Cost</i>	<i>4,094,909</i>
FM# 4309755 LAKE-WEKIVA TRAIL FROM CR 435 TRAILHEADS TO SR 46					Lead Agency: FDOT	*Non-SIS*	
Type of Work: BIKE PATH/TRAIL					LRTP#: pg. 10,11,35,36		
Lake-Wekiva Trail from CR 435 Trailheads to SR 46							
CST	TALT	0	240,323	0	0	0	240,323
CST	SL	0	2,496,250	0	0	0	2,496,250
Total		0	2,736,573	0	0	0	2,736,573
<i>Prior Years Cost</i>		<i>201,964</i>	<i>Future Years Cost</i>		<i>0</i>	<i>Total Project Cost</i>	<i>2,938,537</i>
FM# 4354711 SOUTH SUMTER CONNECT/TRAIL SR 50 FROM SOUTH LAKE TRAIL TO WITHALOOCHOOE TRAIL					Lead Agency: Sumter County	*Non-SIS*	
Type of Work: BIKE PATH/TRAIL					LRTP#: pg.35,36		
PE	ACSL	127,850	0	0	0	0	127,850
PE	TALT	2,765,162	0	0	0	0	2,765,162
PE	SL	90,328	0	0	0	0	90,328
CST	DIH	0	0	0	0	1,252,818	1,252,818
CST	SL	0	0	0	0	6,580,886	6,580,886
CST	DDR	0	0	0	0	10,529,505	10,529,505
Total		2,983,340	0	0	0	18,363,209	21,346,549
<i>Prior Years Cost</i>		<i>1,288,487</i>	<i>Future Years Cost</i>		<i>0</i>	<i>Total Project Cost</i>	<i>22,635,036</i>

Phase	Fund Source	2018/19	2019/20	2020/21	2021/22	2022/23	Total
FM# 4358931 SOUTH LAKE TRAIL - PHASE 4 FROM VAN FLEET TRAIL TO VILLA CITY ROAD (CR 565)						*Non-SIS*	
Type of Work: BIKE PATH/TRAIL						Lead Agency: FDOT LRTP#: pg.35,36	
SOUTH LAKE TRAIL PHASE 4							
ROW	DDR	180,000	120,000	0	0	0	300,000
ROW	DIOH	248,078	128,431	129,891	63,891	0	570,291
ROW	SL	0	0	15,700	0	0	15,700
CST	DDR	0	0	0	15,146,132	0	15,146,132
CST	DIOH	0	0	0	561,748	0	561,748
Total		428,078	248,431	145,591	15,771,771	0	16,593,871
<i>Prior Years Cost</i>		<i>6,122,508</i>	<i>Future Years Cost</i>		<i>0</i>	<i>Total Project Cost</i>	
							22,716,379
FM# 4363601 SR40 TRAIL (BLACK BEAR SCENIC TRAIL) FROM LEVY HAMMOCK RD TO SR15 (US17)						*Non-SIS*	
Type of Work: BIKE PATH/TRAIL						Length: 26.884 mi Lead Agency: Lake County LRTP#: pg.10,11	
PD&E	DIOH	0	38,110	0	0	0	38,110
PD&E	SA	0	1,000,000	0	0	0	1,000,000
PLN	SA	0	100,000	0	0	0	100,000
Total		0	1,138,110	0	0	0	1,138,110
<i>Prior Years Cost</i>		<i>10,551</i>	<i>Future Years Cost</i>		<i>0</i>	<i>Total Project Cost</i>	
							1,148,661
FM# 4369351 HIGHLAND ST FROM S. OF CRANE AVENUE TO N. OF EAST 4TH AVE						*Non-SIS*	
Type of Work: SIDEWALK						Length: 0.994 mi Lead Agency: MANAGED BY CITY OF MOUNT LRTP#: pg.11	
CST	SL	858,500	0	0	0	0	858,500
CST	TALL	290,484	0	0	0	0	290,484
Total		1,148,984	0	0	0	0	1,148,984
<i>Prior Years Cost</i>		<i>0</i>	<i>Future Years Cost</i>		<i>0</i>	<i>Total Project Cost</i>	
							1,148,984
FM# 4390481 EAST ORANGE AVENUE FROM FRUITWOOD AVENUE TO SUNRISE LANE						*Non-SIS*	
Type of Work: SIDEWALK						Length: 0.000 mi Lead Agency: MANAGED BY LAKE COUNTY LRTP#: pg. 11	
PE	TALT	0	0	175,900	0	0	175,900
Total		0	0	175,900	0	0	175,900
<i>Prior Years Cost</i>		<i>0</i>	<i>Future Years Cost</i>		<i>0</i>	<i>Total Project Cost</i>	
							175,900

Phase	Fund Source	2018/19	2019/20	2020/21	2021/22	2022/23	Total
FM# 4394931 CR 473 FROM FOUNTAIN LAKE BLVD TO HAINES CREEK ROAD/TREADWAY ELEM					Length: 1.380 mi		*Non-SIS*
Type of Work: SIDEWALK					Lead Agency: MANAGED BY LAKE COUNTY		
					LRTP#: pg. 11		
CST	SR2T	0	864,138	0	0	0	864,138
	Total	0	864,138	0	0	0	864,138
<i>Prior Years Cost</i>		151,625	<i>Future Years Cost</i>	0	<i>Total Project Cost</i>		1,015,763
FM# 4396631 HANCOCK RD (LOST LAKE ELEM SCH) FROM SUNBURST LANE TO GREATER PINES BLV					Length: 0.839 mi		*Non-SIS*
Type of Work: SIDEWALK					Lead Agency: MANAGED BY LAKE COUNTY		
					LRTP#: pg.11		
PE	TALL	0	0	158,610	0	0	158,610
	Total	0	0	158,610	0	0	158,610
<i>Prior Years Cost</i>		0	<i>Future Years Cost</i>	0	<i>Total Project Cost</i>		158,610
FM# 4396831 LOG HOUSE RD (PINE RIDGE ELEM SCH) FROM CR 561 TO LAKESHORE DRIVE					Length: 0.850 mi		*Non-SIS*
Type of Work: SIDEWALK					Lead Agency: MANAGED BY LAKE COUNTY		
					LRTP#: pg.11		
PE	TALT	0	0	70,466	0	0	70,466
PE	TALL	0	0	25,744	0	0	25,744
	Total	0	0	96,210	0	0	96,210
<i>Prior Years Cost</i>		0	<i>Future Years Cost</i>	0	<i>Total Project Cost</i>		96,210
FM# 4396841 RADIO ROAD (TREADWAY ELEM SCH) FROM SILVER BLUFF DR TO TREADWAY SCH RD					Length: 0.967 mi		*Non-SIS*
Type of Work: SIDEWALK					Lead Agency: MANAGED BY LAKE COUNTY		
					LRTP#: pg.11		
PE	TALL	0	0	187,600	0	0	187,600
	Total	0	0	187,600	0	0	187,600
<i>Prior Years Cost</i>		0	<i>Future Years Cost</i>	0	<i>Total Project Cost</i>		187,600
FM# 4396851 CR561/MONROE ST (ASTATULA ELEM SCH) FROM TENNESSEE AVE TO CR48/FL AVE					Length: 0.376 mi		*Non-SIS*
Type of Work: SIDEWALK					Lead Agency: MANAGED BY LAKE COUNTY		
					LRTP#: pg.11		
PE	TALL	0	0	49,670	0	0	49,670
	Total	0	0	49,670	0	0	49,670
<i>Prior Years Cost</i>		0	<i>Future Years Cost</i>	0	<i>Total Project Cost</i>		49,670

Phase	Fund Source	2018/19	2019/20	2020/21	2021/22	2022/23	Total
FM# 4396861 CR44 BYPASS-(EUSTIS MIDDLE SCH) FROM E ORANGE AVE TO CYPRESS GROVE DR					Length: 1.119 mi		*Non-SIS*
Type of Work: SIDEWALK					Lead Agency: MANAGED BY LAKE COUNTY		
PE	TALL	0	0	73,460	0	0	73,460
	Total	0	0	73,460	0	0	73,460
<i>Prior Years Cost</i>		<i>0</i>	<i>Future Years Cost</i>		<i>0</i>	<i>Total Project Cost</i>	
							<i>73,460</i>
FM# 4396871 LAKESHORE DR (PINE EDGE ELEM) FROM CHERITH LANE TO OLEANDER DRIVE					Length: 1.231 mi		*Non-SIS*
Type of Work: SIDEWALK					Lead Agency: MANAGED BY LAKE COUNTY		
PE	TALT	0	0	140,930	0	0	140,930
	Total	0	0	140,930	0	0	140,930
<i>Prior Years Cost</i>		<i>0</i>	<i>Future Years Cost</i>		<i>0</i>	<i>Total Project Cost</i>	
							<i>140,930</i>

DRAFT

Section 7 - Transit and Transportation Disadvantaged

DRAFT

Phase	Fund Source	2018/19	2019/20	2020/21	2021/22	2022/23	Total
FM# 4143312 LAKE-COUNTY CAPITAL FIXED ROUTE GRANT SECTION 5307 PURCHASE BUSES					Length: 0.000 mi	*Non-SIS*	
Type of Work: CAPITAL FOR FIXED ROUTE					Lead Agency: Lake County		
					LRTP#: pg.11,34		
CAP	FTA	3,401,749	3,503,801	3,608,916	3,717,183	3,828,698	18,060,347
CAP	LF	850,437	875,950	902,229	929,296	957,175	4,515,087
Total		4,252,186	4,379,751	4,511,145	4,646,479	4,785,873	22,575,434
<i>Prior Years Cost</i>		<i>6,400,909</i>	<i>Future Years Cost</i>	<i>0</i>	<i>Total Project Cost</i>		<i>28,976,343</i>
FM# 4333051 LAKE COUNTY BLOCK GRANT OPERATING ASSISTANCE FOR FIXED ROUTE SERVICE SEC 5307					Length: 0.000 mi	*Non-SIS*	
Type of Work: OPERATING FOR FIXED ROUTE					Lead Agency: Managed by LAKE COUNTY PUBLIC		
LAKE COUNTY-BLOCK GRANT OPERATING ASSISTANCE FOR FIXED ROUTE SERVICE SEC 5307					LRTP#: pg.16,32,33,37,58		
OPS	DPTO	725,158	754,804	792,544	832,171	0	3,104,677
OPS	LF	725,158	754,804	792,544	832,171	0	3,104,677
OPS	FTA	715,000	715,000	0	0	0	1,430,000
Total		2,165,316	2,224,608	1,585,088	1,664,342	0	7,639,354
<i>Prior Years Cost</i>		<i>2,114,960</i>	<i>Future Years Cost</i>	<i>0</i>	<i>Total Project Cost</i>		<i>9,754,314</i>
FM# 4333081 LAKE-FTA SEC 5311 RURAL TRANSPORTATION					Length: 0.000 mi	*Non-SIS*	
Type of Work: OPERATING/ADMIN. ASSISTANCE					Lead Agency: Managed by LAKE COUNTY PUBLIC		
					LRTP#: pg.11,34		
OPS	DU	520,507	546,533	573,859	602,552	0	2,243,451
OPS	LF	520,507	546,533	573,859	602,522	0	2,243,421
Total		1,041,014	1,093,066	1,147,718	1,205,074	0	4,486,872
<i>Prior Years Cost</i>		<i>991,442</i>	<i>Future Years Cost</i>	<i>0</i>	<i>Total Project Cost</i>		<i>5,478,314</i>
FM# 4333101 SUMTER-SEC 5311 RURAL TRANSPORTATION					Length: 0.000 mi	*Non-SIS*	
Type of Work: OPERATING/ADMIN. ASSISTANCE					Lead Agency: Managed by SUMTER COUNTY		
					LRTP#: pg.11,34		
OPS	DU	319,764	335,752	352,539	370,167	0	1,378,222
OPS	LF	319,764	335,752	352,359	370,167	0	1,378,042
Total		639,528	671,504	704,898	740,334	0	2,756,264
<i>Prior Years Cost</i>		<i>609,074</i>	<i>Future Years Cost</i>	<i>0</i>	<i>Total Project Cost</i>		<i>3,365,338</i>

Section 9 - Airports

DRAFT

Phase	Fund Source	2018/19	2019/20	2020/21	2021/22	2022/23	Total
FM# 4316201 LAKE-UMATILLA DESIGN PARALLEL TAXIWAY S OUTH					Length: 0.000 mi	*Non-SIS*	
Type of Work: AVIATION CAPACITY PROJECT					Lead Agency: City of Umatilla		
					LRTP#: pg.10,11		
CAP	DDR	0	0	0	0	480,000	480,000
CAP	LF	0	0	0	0	120,000	120,000
Total		0	0	0	0	600,000	600,000
<i>Prior Years Cost</i>		0	<i>Future Years Cost</i>		0	<i>Total Project Cost</i>	600,000
FM# 4316221 LAKE-UMATILLA LAKE-UMATILLA EA FOR RW I-19 EXTENSION					Length: 0.000 mi	*Non-SIS*	
Type of Work: AVIATION CAPACITY PROJECT					Lead Agency: City of Umatilla		
					LRTP#: pg.10,11		
CAP	DPTO	12,000	0	0	0	0	12,000
CAP	LF	3,000	0	0	0	0	3,000
CAP	FAA	135,000	0	0	0	0	135,000
Total		150,000	0	0	0	0	150,000
<i>Prior Years Cost</i>		0	<i>Future Years Cost</i>		0	<i>Total Project Cost</i>	150,000
FM# 4316241 LAKE-UMATILLA CONSTRUCT PARALLEL TAXIWAY SOUTH					Length: 0.000 mi	*Non-SIS*	
Type of Work: AVIATION CAPACITY PROJECT					Lead Agency: City of Umatilla		
					LRTP#: pg.10,11		
CAP	DDR	0	0	0	40,000	0	40,000
CAP	LF	0	0	0	10,000	0	10,000
CAP	FAA	0	0	0	450,000	0	450,000
Total		0	0	0	500,000	0	500,000
<i>Prior Years Cost</i>		63,400	<i>Future Years Cost</i>		0	<i>Total Project Cost</i>	563,400
FM# 4316251 LAKE-UMATILLA CONSTRUCT TERMINAL AREA A PRON					Length: 0.000 mi	*Non-SIS*	
Type of Work: AVIATION CAPACITY PROJECT					Lead Agency: City of Umatilla		
					LRTP#: pg.10,11		
CAP	DDR	0	0	0	400,000	0	400,000
CAP	LF	0	0	0	100,000	0	100,000
Total		0	0	0	500,000	0	500,000
<i>Prior Years Cost</i>		0	<i>Future Years Cost</i>		0	<i>Total Project Cost</i>	500,000

Phase	Fund Source	2018/19	2019/20	2020/21	2021/22	2022/23	Total	
FM# 4353161 LAKE-UMATILLA MUNI AIRPORT IMPROVEMENT PROJECT							*Non-SIS*	
Type of Work: AVIATION SAFETY PROJECT					Lead Agency: City of Umatilla			
					LRTP#: pg.18,19			
CAP	DDR	0	12,000	120,000	0	0	132,000	
CAP	LF	0	3,000	30,000	0	0	33,000	
CAP	FAA	0	135,000	1,350,000	0	0	1,485,000	
Total		0	150,000	1,500,000	0	0	1,650,000	
<i>Prior Years Cost</i>		<i>163,110</i>	<i>Future Years Cost</i>		<i>0</i>		<i>Total Project Cost</i>	<i>1,813,110</i>
FM# 4384471 LAKE-LEESBURG INTL INSTALL AIRFIELD GUIDANCE SIGNS							*Non-SIS*	
Type of Work: AVIATION PRESERVATION PROJECT					Length: 0.000 mi			
					Lead Agency: MANAGED BY CITY OF LEESBURG			
					LRTP#: pg.10,11			
CAP	DPTO	0	0	87,500	0	0	87,500	
CAP	LF	0	0	87,500	0	0	87,500	
CAP	FAA	0	0	1,575,000	0	0	1,575,000	
Total		0	0	1,750,000	0	0	1,750,000	
<i>Prior Years Cost</i>		<i>0</i>	<i>Future Years Cost</i>		<i>0</i>		<i>Total Project Cost</i>	<i>1,750,000</i>
FM# 4384481 LAKE-LEESBURG INTL WILCO DRIVE IMPROVEMENTS							*Non-SIS*	
Type of Work: AVIATION REVENUE/OPERATIONAL					Length: 0.000 mi			
					Lead Agency: MANAGED BY CITY OF LEESBURG			
					LRTP#: pg.10,11			
CAP	DPTO	0	200,000	0	0	0	200,000	
CAP	LF	0	50,000	0	0	0	50,000	
Total		0	250,000	0	0	0	250,000	
<i>Prior Years Cost</i>		<i>0</i>	<i>Future Years Cost</i>		<i>0</i>		<i>Total Project Cost</i>	<i>250,000</i>
FM# 4384491 LAKE-LEESBURG INTL CONSTRUCT HANGAR							*Non-SIS*	
Type of Work: AVIATION REVENUE/OPERATIONAL					Length: 0.000 mi			
					Lead Agency: MANAGED BY CITY OF LEESBURG			
					LRTP#: pg.10,11			
CAP	DDR	0	0	500,000	0	0	500,000	
CAP	LF	0	0	500,000	0	0	500,000	
Total		0	0	1,000,000	0	0	1,000,000	
<i>Prior Years Cost</i>		<i>0</i>	<i>Future Years Cost</i>		<i>0</i>		<i>Total Project Cost</i>	<i>1,000,000</i>

Phase	Fund Source	2018/19	2019/20	2020/21	2021/22	2022/23	Total
FM# 4384511 LAKE-LEESBURG INTL CONSTRUCT AIRPORT MAINTENANCE FACILITY					Length: 0.000 mi	*Non-SIS*	
Type of Work: AVIATION REVENUE/OPERATIONAL					Lead Agency: MANAGED BY CITY OF LEESBURG		
					L RTP#: pg.10,11		
CAP	DDR	800,000	0	0	0	0	800,000
CAP	LF	200,000	0	0	0	0	200,000
Total		1,000,000	0	0	0	0	1,000,000
<i>Prior Years Cost</i>		0	<i>Future Years Cost</i>		0	<i>Total Project Cost</i>	
							1,000,000
FM# 4384961 LAKE-UMATILLA CONSTRUCT HANGARS					Length: 0.000 mi	*Non-SIS*	
Type of Work: AVIATION REVENUE/OPERATIONAL					Lead Agency: City of Umatilla		
					L RTP#: pg.10,11		
CAP	DPTO	148,000	0	0	0	0	148,000
CAP	LF	37,000	0	0	0	0	37,000
Total		185,000	0	0	0	0	185,000
<i>Prior Years Cost</i>		0	<i>Future Years Cost</i>		0	<i>Total Project Cost</i>	
							185,000
FM# 4384971 LAKE-UMATILLA ACQUIRE CENTRAL TERMINAL AREA LAND					Length: 0.000 mi	*Non-SIS*	
Type of Work: AVIATION SAFETY PROJECT					Lead Agency: City of Umatilla		
					L RTP#: pg.10,11		
CAP	DPTO	12,800	0	0	0	0	12,800
CAP	LF	3,200	0	0	0	0	3,200
CAP	FAA	144,000	0	0	0	0	144,000
Total		160,000	0	0	0	0	160,000
<i>Prior Years Cost</i>		0	<i>Future Years Cost</i>		0	<i>Total Project Cost</i>	
							160,000
FM# 4407751 LAKE-LEESBURG INTL PAVEMENT REHABILITATION					Length: 0.000 mi	*Non-SIS*	
Type of Work: AVIATION PRESERVATION PROJECT					Lead Agency: MANAGED BY CITY OF LEESBURG		
					L RTP#: N/A		
CAP	DDR	360,000	360,000	0	0	0	720,000
CAP	LF	90,000	90,000	0	0	0	180,000
CAP	FAA	0	4,050,000	0	0	0	4,050,000
Total		450,000	4,500,000	0	0	0	4,950,000
<i>Prior Years Cost</i>		0	<i>Future Years Cost</i>		0	<i>Total Project Cost</i>	
							4,950,000

Phase	Fund Source	2018/19	2019/20	2020/21	2021/22	2022/23	Total
FM# 4407761 LAKE-LEESBURG INTL AIRFIELD IMPROVEMENTS					Length: 0.000 mi	*Non-SIS*	
Type of Work: AVIATION PRESERVATION PROJECT					Lead Agency: MANAGED BY CITY OF LEESBURG		
					LRTP#: N/A		
CAP	DDR	0	0	0	240,000	0	240,000
CAP	LF	0	0	0	60,000	0	60,000
CAP	FAA	0	0	0	2,700,000	0	2,700,000
Total		0	0	0	3,000,000	0	3,000,000
<i>Prior Years Cost</i>		<i>0</i>	<i>Future Years Cost</i>		<i>0</i>	<i>Total Project Cost</i>	<i>3,000,000</i>
FM# 4407771 LAKE-LEESBURG INTL APRON EXPANSION					Length: 0.000 mi	*Non-SIS*	
Type of Work: AVIATION PRESERVATION PROJECT					Lead Agency: MANAGED BY CITY OF LEESBURG		
					LRTP#: N/A		
CAP	DDR	0	0	0	0	320,000	320,000
CAP	LF	0	0	0	0	80,000	80,000
Total		0	0	0	0	400,000	400,000
<i>Prior Years Cost</i>		<i>0</i>	<i>Future Years Cost</i>		<i>0</i>	<i>Total Project Cost</i>	<i>400,000</i>

DRAFT

APPENDICES AVAILABLE ONLINE: <http://www.lakesumtermpo.com/documents/tip.aspx>

APPENDIX A –
LAKE COUNTY TRANSPORTATION CONSTRUCTION PROGRAM

APPENDIX B-
SUMTER COUNTY CAPITAL IMPROVEMENT PROGRAM

APPENDIX C-
FEDERAL OBLIGATIONS REPORT

APPENDIX D-
FHWA SAFETY PERFORMANCE MEASURES

FLORIDA DEPARTMENT OF TRANSPORTATION
OFFICE OF WORK PROGRAM
ANNUAL OBLIGATIONS REPORT
=====

HIGHWAYS
=====

ITEM NUMBER:238275 2 PROJECT DESCRIPTION:SR 46 / US 441 FROM W OF US 441 TO E OF VISTA VIEW LANE
DISTRICT:05 COUNTY:LAKE
ROADWAY ID:11130000 PROJECT LENGTH: 1.185MI

NON-SIS
TYPE OF WORK:ADD LANES & RECONSTRUCT
LANES EXIST/IMPROVED/ADDED: 2/ 0/ 4

FUND CODE	2017
PHASE: CONSTRUCTION / RESPONSIBLE AGENCY: MANAGED BY FDOT	
CM	1,486,863
SA	5,232,152
TOTAL 238275 2	6,719,015
TOTAL 238275 2	6,719,015

ITEM NUMBER:238275 3 PROJECT DESCRIPTION:SR 46 FROM E OF VISTA VIEW LANE TO E OF ROUND LAKE ROAD
DISTRICT:05 COUNTY:LAKE
ROADWAY ID:11130000 PROJECT LENGTH: 1.042MI

NON-SIS
TYPE OF WORK:ADD LANES & RECONSTRUCT
LANES EXIST/IMPROVED/ADDED: 2/ 0/ 4

FUND CODE	2017
PHASE: PRELIMINARY ENGINEERING / RESPONSIBLE AGENCY: MANAGED BY FDOT	
EB	8,988
SA	-15
TOTAL 238275 3	8,973
TOTAL 238275 3	8,973

ITEM NUMBER:238275 7 PROJECT DESCRIPTION:SR429/46(WEKIVA PKW) FROM W OF OLD MCDONALD RD TO E OF WEKIVA RIVER RD
DISTRICT:05 COUNTY:LAKE
ROADWAY ID:11320000 PROJECT LENGTH: 4.924MI

SIS
TYPE OF WORK:NEW ROAD CONSTRUCTION
LANES EXIST/IMPROVED/ADDED: 0/ 0/ 6

FUND CODE	2017
PHASE: RIGHT OF WAY / RESPONSIBLE AGENCY: MANAGED BY FDOT	
SA	803,367
SL	2,691,633
PHASE: CONSTRUCTION / RESPONSIBLE AGENCY: MANAGED BY FDOT	
NHPP	17,707,425
TOTAL 238275 7	21,202,425
TOTAL 238275 7	21,202,425

ITEM NUMBER:238275 8 PROJECT DESCRIPTION:CR 46A REALIGNMENT FROM SR 46 TO N OF ARUNDEL WAY
DISTRICT:05 COUNTY:LAKE
ROADWAY ID:11580000 PROJECT LENGTH: 2.450MI

NON-SIS
TYPE OF WORK:NEW ROAD CONSTRUCTION
LANES EXIST/IMPROVED/ADDED: 2/ 0/ 2

FUND CODE	2017
PHASE: PRELIMINARY ENGINEERING / RESPONSIBLE AGENCY: MANAGED BY FDOT	
SL	38,545
PHASE: RIGHT OF WAY / RESPONSIBLE AGENCY: MANAGED BY FDOT	
SL	15,000
SN	1,000,000
PHASE: CONSTRUCTION / RESPONSIBLE AGENCY: MANAGED BY FDOT	
RED	2,201,322
SA	3,731,947
SL	1,396,886

FLORIDA DEPARTMENT OF TRANSPORTATION
OFFICE OF WORK PROGRAM
ANNUAL OBLIGATIONS REPORT
=====

HIGHWAYS
=====

SN 176,570
TOTAL 238275 8 8,560,270
TOTAL 238275 8 8,560,270

ITEM NUMBER:238319 2 PROJECT DESCRIPTION:SR 19 OVER LITTLE LAKE HARRIS BRIDGE # 110026 *NON-SIS*
DISTRICT:05 COUNTY:LAKE TYPE OF WORK:BRIDGE REPLACEMENT
ROADWAY ID:11080000 PROJECT LENGTH: .592MI LANES EXIST/IMPROVED/ADDED: 2/ 0/ 0

FUND CODE 2017
PHASE: PRELIMINARY ENGINEERING / RESPONSIBLE AGENCY: MANAGED BY FDOT
SABR 102,568
SL 138,471
PHASE: RIGHT OF WAY / RESPONSIBLE AGENCY: MANAGED BY FDOT
NHBR 151,431
PHASE: CONSTRUCTION / RESPONSIBLE AGENCY: MANAGED BY FDOT
NHBR 1,869,779
SA 98,490
SL 87,166
TOTAL 238319 2 2,447,905
TOTAL 238319 2 2,447,905

ITEM NUMBER:238394 2 PROJECT DESCRIPTION:SR 500 (US 441) FROM PERKINS ST TO N OF GRIFFIN RD *NON-SIS*
DISTRICT:05 COUNTY:LAKE TYPE OF WORK:ADD LANES & RECONSTRUCT
ROADWAY ID:11010047 PROJECT LENGTH: 1.022MI LANES EXIST/IMPROVED/ADDED: 4/ 4/ 2

FUND CODE 2017
PHASE: CONSTRUCTION / RESPONSIBLE AGENCY: MANAGED BY FDOT
EB -2,479
SL -15,057
TOTAL 238394 2 -17,536
TOTAL 238394 2 -17,536

ITEM NUMBER:238422 1 PROJECT DESCRIPTION:SR 25 (US27) FROM N OF BOGGY MARSH RD TO N OF LAKE LOUISA RD *SIS*
DISTRICT:05 COUNTY:LAKE TYPE OF WORK:ADD LANES & RECONSTRUCT
ROADWAY ID:11200000 PROJECT LENGTH: 6.515MI LANES EXIST/IMPROVED/ADDED: 4/ 4/ 2

FUND CODE 2017
PHASE: CONSTRUCTION / RESPONSIBLE AGENCY: MANAGED BY FDOT
NHPP 17,005,769
TOTAL 238422 1 17,005,769
TOTAL 238422 1 17,005,769

FLORIDA DEPARTMENT OF TRANSPORTATION
OFFICE OF WORK PROGRAM
ANNUAL OBLIGATIONS REPORT
=====

HIGHWAYS
=====

ITEM NUMBER:424299 1 PROJECT DESCRIPTION:SR 25 US 27 FROM POLK CO LINE TO END OF 1ST RAMP N OF US 192
DISTRICT:05 COUNTY:LAKE
ROADWAY ID:11200000 PROJECT LENGTH: .282MI

SIS
TYPE OF WORK:ADD LANES & RECONSTRUCT
LANES EXIST/IMPROVED/ADDED: 6/ 0/ 2

FUND
CODE

2017

PHASE: CONSTRUCTION / RESPONSIBLE AGENCY: MANAGED BY FDOT

SA

-89,187

TOTAL 424299 1

-89,187

TOTAL 424299 1

-89,187

ITEM NUMBER:429356 1 PROJECT DESCRIPTION:SR 500 (US 441) FROM SR 44 TO N OF SR 46
DISTRICT:05 COUNTY:LAKE
ROADWAY ID:11010000 PROJECT LENGTH: 1.963MI

NON-SIS
TYPE OF WORK:ADD LANES & RECONSTRUCT
LANES EXIST/IMPROVED/ADDED: 6/ 0/ 1

FUND
CODE

2017

PHASE: PRELIMINARY ENGINEERING / RESPONSIBLE AGENCY: MANAGED BY FDOT

SL

382,230

TOTAL 429356 1

382,230

TOTAL 429356 1

382,230

ITEM NUMBER:429556 1 PROJECT DESCRIPTION:SR 44 OVER ST JOHNS RIVER BRIDGE# 110063
DISTRICT:05 COUNTY:LAKE
ROADWAY ID:11110000 PROJECT LENGTH: .358MI

NON-SIS
TYPE OF WORK:BRIDGE REPLACEMENT
LANES EXIST/IMPROVED/ADDED: 2/ 0/ 0

FUND
CODE

2017

PHASE: PRELIMINARY ENGINEERING / RESPONSIBLE AGENCY: MANAGED BY FDOT

NHBR

1,115,251

SABR

630,106

TOTAL 429556 1

1,745,357

TOTAL 429556 1

1,745,357

ITEM NUMBER:429606 1 PROJECT DESCRIPTION:CR 561 AT CR 455
DISTRICT:05 COUNTY:LAKE
ROADWAY ID:11090000 PROJECT LENGTH: .002MI

NON-SIS
TYPE OF WORK:ROUNDABOUT
LANES EXIST/IMPROVED/ADDED: 2/ 0/ 0

FUND
CODE

2017

PHASE: CONSTRUCTION / RESPONSIBLE AGENCY: MANAGED BY FDOT

SA

-950

TOTAL 429606 1

-950

TOTAL 429606 1

-950

FLORIDA DEPARTMENT OF TRANSPORTATION
OFFICE OF WORK PROGRAM
ANNUAL OBLIGATIONS REPORT
=====

LAKE-SUMTER MPO

HIGHWAYS
=====

ITEM NUMBER:429606 2
DISTRICT:05
ROADWAY ID:11090000

PROJECT DESCRIPTION:CR 561 AT CR 455
COUNTY:LAKE
PROJECT LENGTH: .002MI

NON-SIS
TYPE OF WORK:LIGHTING
LANES EXIST/IMPROVED/ADDED: 2/ 0/ 0

FUND
CODE

2017

PHASE: CONSTRUCTION / RESPONSIBLE AGENCY: MANAGED BY FDOT
HSP

-380
-380
-380

TOTAL 429606 2
TOTAL 429606 2

ITEM NUMBER:430975 2
DISTRICT:05
ROADWAY ID:

PROJECT DESCRIPTION:LAKE-WEKIVA TRAIL FROM TREMAIN STREET TO SR 46
COUNTY:LAKE
PROJECT LENGTH: .000

NON-SIS
TYPE OF WORK:BIKE PATH/TRAIL
LANES EXIST/IMPROVED/ADDED: 0/ 0/ 0

FUND
CODE

2017

PHASE: PRELIMINARY ENGINEERING / RESPONSIBLE AGENCY: MANAGED BY FDOT
TALT

4,360

PHASE: PRELIMINARY ENGINEERING / RESPONSIBLE AGENCY: MANAGED BY LAKE COUNTY

1,007,985
318,086
1,330,431
1,330,431

SE
SN
TOTAL 430975 2
TOTAL 430975 2

ITEM NUMBER:430975 3
DISTRICT:05
ROADWAY ID:

PROJECT DESCRIPTION:LAKE-WEKIVA TRAIL FROM SR 46 TO HOJIN STREET
COUNTY:LAKE
PROJECT LENGTH: .000

NON-SIS
TYPE OF WORK:BIKE PATH/TRAIL
LANES EXIST/IMPROVED/ADDED: 0/ 0/ 0

FUND
CODE

2017

PHASE: PRELIMINARY ENGINEERING / RESPONSIBLE AGENCY: MANAGED BY FDOT
TALT

5,000

PHASE: PRELIMINARY ENGINEERING / RESPONSIBLE AGENCY: MANAGED BY LAKE COUNTY

239,458
267,542
512,000
512,000

SN
TALN
TOTAL 430975 3
TOTAL 430975 3

ITEM NUMBER:431530 1
DISTRICT:05
ROADWAY ID:11000091

PROJECT DESCRIPTION:THOMAS AVENUE FROM GRIFFIN ROAD (CR 44C) TO N OF DOCKSIDE DR
COUNTY:LAKE
PROJECT LENGTH: .672MI

NON-SIS
TYPE OF WORK:SIDEWALK
LANES EXIST/IMPROVED/ADDED: 2/ 0/ 0

FUND
CODE

2017

PHASE: CONSTRUCTION / RESPONSIBLE AGENCY: MANAGED BY FDOT
TALL

-755
-755
-755

TOTAL 431530 1
TOTAL 431530 1

FLORIDA DEPARTMENT OF TRANSPORTATION
OFFICE OF WORK PROGRAM
ANNUAL OBLIGATIONS REPORT
=====

HIGHWAYS
=====

ITEM NUMBER:431617 1 PROJECT DESCRIPTION:ORANGE AVENUE FROM HASELTON STREET TO CRICKET HOLLOW LANE
DISTRICT:05 COUNTY:LAKE
ROADWAY ID:11110000 PROJECT LENGTH: .700MI

NON-SIS
TYPE OF WORK:SIDEWALK
LANES EXIST/IMPROVED/ADDED: 4/ 0/ 0

FUND
CODE

2017

PHASE: CONSTRUCTION / RESPONSIBLE AGENCY: MANAGED BY FDOT

TALL

-1,751

TOTAL 431617 1

-1,751

TOTAL 431617 1

-1,751

ITEM NUMBER:432333 1 PROJECT DESCRIPTION:SR25/500 FROM AVIENDA CENTRAL/GRIFFIN AVE TO SUMTER CO LINE
DISTRICT:05 COUNTY:LAKE
ROADWAY ID:11230000 PROJECT LENGTH: 1.155MI

NON-SIS
TYPE OF WORK:RESURFACING
LANES EXIST/IMPROVED/ADDED: 6/ 6/ 0

FUND
CODE

2017

PHASE: CONSTRUCTION / RESPONSIBLE AGENCY: MANAGED BY FDOT

NHRE

50,782

SA

1,155,341

TOTAL 432333 1

1,206,123

TOTAL 432333 1

1,206,123

ITEM NUMBER:432954 1 PROJECT DESCRIPTION:EUSTIS ELEMENTARY AND MIDDLE SCHOOLS
DISTRICT:05 COUNTY:LAKE
ROADWAY ID:11511500 PROJECT LENGTH: .412MI

NON-SIS
TYPE OF WORK:SIDEWALK
LANES EXIST/IMPROVED/ADDED: 2/ 0/ 0

FUND
CODE

2017

PHASE: CONSTRUCTION / RESPONSIBLE AGENCY: MANAGED BY FDOT

SL

-2,423

PHASE: CONSTRUCTION / RESPONSIBLE AGENCY: MANAGED BY LAKE COUNTY

SL

-24,743

TOTAL 432954 1

-27,166

TOTAL 432954 1

-27,166

ITEM NUMBER:433200 1 PROJECT DESCRIPTION:VILLAGES ELEMENTARY SCHOOL AT CR 25 2 LOCATIONS
DISTRICT:05 COUNTY:LAKE
ROADWAY ID:11040000 PROJECT LENGTH: .614MI

NON-SIS
TYPE OF WORK:SIDEWALK
LANES EXIST/IMPROVED/ADDED: 2/ 0/ 0

FUND
CODE

2017

PHASE: CONSTRUCTION / RESPONSIBLE AGENCY: MANAGED BY TOWN OF LADY LAKE

SL

46,902

TOTAL 433200 1

46,902

TOTAL 433200 1

46,902

FLORIDA DEPARTMENT OF TRANSPORTATION
 OFFICE OF WORK PROGRAM
 ANNUAL OBLIGATIONS REPORT
 =====
HIGHWAYS
 =====

ITEM NUMBER:433214 1 PROJECT DESCRIPTION:VILLAGES ELEMENTARY SCHOOL PED FEATURES AT US 27 2 LOCATIONS *NON-SIS*
 DISTRICT:05 COUNTY:LAKE TYPE OF WORK:TRAFFIC SIGNAL UPDATE
 ROADWAY ID:11230000 PROJECT LENGTH: .539MI LANES EXIST/IMPROVED/ADDED: 4/ 0/ 0

FUND CODE 2017

PHASE: CONSTRUCTION / RESPONSIBLE AGENCY: MANAGED BY FDOT

SL -262
 TOTAL 433214 1 -262
 TOTAL 433214 1 -262

ITEM NUMBER:433673 1 PROJECT DESCRIPTION:TAV-LEE TRAIL EXT FROM WOOTEN PARK TO NORTH OF SINCLAIR AVE/RUBY ST *NON-SIS*
 DISTRICT:05 COUNTY:LAKE TYPE OF WORK:BIKE PATH/TRAIL
 ROADWAY ID: PROJECT LENGTH: .000 LANES EXIST/IMPROVED/ADDED: 0/ 0/ 0

FUND CODE 2017

PHASE: RAILROAD AND UTILITIES / RESPONSIBLE AGENCY: MANAGED BY FDOT

RHH 224,000

PHASE: CONSTRUCTION / RESPONSIBLE AGENCY: MANAGED BY FDOT

EB 26,334
 TALL 996,263
 TOTAL 433673 1 1,246,597
 TOTAL 433673 1 1,246,597

ITEM NUMBER:433860 1 PROJECT DESCRIPTION:SR 33 OVER GREEN SWAMP BRIDGE # 110002 *NON-SIS*
 DISTRICT:05 COUNTY:LAKE TYPE OF WORK:BRIDGE REPLACEMENT
 ROADWAY ID:11020000 PROJECT LENGTH: .027MI LANES EXIST/IMPROVED/ADDED: 2/ 0/ 0

FUND CODE 2017

PHASE: RIGHT OF WAY / RESPONSIBLE AGENCY: MANAGED BY FDOT

NHBR 157,436
 TOTAL 433860 1 157,436
 TOTAL 433860 1 157,436

ITEM NUMBER:434407 1 PROJECT DESCRIPTION:SR 25 (US 27) FROM CR 561 TO N OF O'BRIEN RD *SIS*
 DISTRICT:05 COUNTY:LAKE TYPE OF WORK:RESURFACING
 ROADWAY ID:11200000 PROJECT LENGTH: 6.027MI LANES EXIST/IMPROVED/ADDED: 4/ 4/ 0

FUND CODE 2017

PHASE: CONSTRUCTION / RESPONSIBLE AGENCY: MANAGED BY FDOT

SA 8,508,024
 TOTAL 434407 1 8,508,024
 TOTAL 434407 1 8,508,024

FLORIDA DEPARTMENT OF TRANSPORTATION
OFFICE OF WORK PROGRAM
ANNUAL OBLIGATIONS REPORT
=====

LAKE-SUMTER MPO

HIGHWAYS
=====

ITEM NUMBER:434422 1 PROJECT DESCRIPTION:CR 466A (PICCIOLA RD)FROM DOGWOOD DRIVE TO S OF TWIN PALMS ROAD *NON-SIS*
DISTRICT:05 COUNTY:LAKE TYPE OF WORK:PAVE SHOULDERS
ROADWAY ID:11530000 PROJECT LENGTH: .663MI LANES EXIST/IMPROVED/ADDED: 0/ 0/ 0

FUND CODE	2017
PHASE: PRELIMINARY ENGINEERING / RESPONSIBLE AGENCY: MANAGED BY FDOT HSP	-1,974
PHASE: PRELIMINARY ENGINEERING / RESPONSIBLE AGENCY: MANAGED BY LAKE COUNTY HSP	-5,318
PHASE: CONSTRUCTION / RESPONSIBLE AGENCY: MANAGED BY FDOT HSP	2,000
PHASE: CONSTRUCTION / RESPONSIBLE AGENCY: MANAGED BY LAKE COUNTY HSP	508,409
TOTAL 434422 1	503,117
TOTAL 434422 1	503,117

ITEM NUMBER:436356 1 PROJECT DESCRIPTION:SR 19 FROM 0.230 MILES N OF BULLDOG WAY TO CR 445 & CR 445A *NON-SIS*
DISTRICT:05 COUNTY:LAKE TYPE OF WORK:SIGNING/PAVEMENT MARKINGS
ROADWAY ID:11100000 PROJECT LENGTH: 12.500MI LANES EXIST/IMPROVED/ADDED: 2/ 0/ 0

FUND CODE	2017
PHASE: CONSTRUCTION / RESPONSIBLE AGENCY: MANAGED BY FDOT HSP	497,340
SN	5,135
TOTAL 436356 1	502,475
TOTAL 436356 1	502,475

ITEM NUMBER:437464 1 PROJECT DESCRIPTION:OLD 441/CR 19A @ EUDORA ROAD *NON-SIS*
DISTRICT:05 COUNTY:LAKE TYPE OF WORK:ROUNDOABOUT
ROADWAY ID:11240000 PROJECT LENGTH: .500MI LANES EXIST/IMPROVED/ADDED: 2/ 0/ 0

FUND CODE	2017
PHASE: PRELIMINARY ENGINEERING / RESPONSIBLE AGENCY: MANAGED BY FDOT SL	3,000
PHASE: PRELIMINARY ENGINEERING / RESPONSIBLE AGENCY: MANAGED BY LAKE COUNTY SL	325,000
TOTAL 437464 1	328,000
TOTAL 437464 1	328,000

ITEM NUMBER:437485 1 PROJECT DESCRIPTION:CR 473 FROM TREADWAY SCHOOL ROAD TO CR 44 *NON-SIS*
DISTRICT:05 COUNTY:LAKE TYPE OF WORK:PAVE SHOULDERS
ROADWAY ID:11509000 PROJECT LENGTH: 2.034MI LANES EXIST/IMPROVED/ADDED: 2/ 0/ 0

FUND CODE	2017
PHASE: PRELIMINARY ENGINEERING / RESPONSIBLE AGENCY: MANAGED BY LAKE COUNTY HSP	120,000
TOTAL 437485 1	120,000
TOTAL 437485 1	120,000

FLORIDA DEPARTMENT OF TRANSPORTATION
OFFICE OF WORK PROGRAM
ANNUAL OBLIGATIONS REPORT
=====

HIGHWAYS
=====

ITEM NUMBER:437486 1
DISTRICT:05
ROADWAY ID:11000098

PROJECT DESCRIPTION:HANCOCK ROAD AT NORTH RIDGE BOULEVARD
COUNTY:LAKE
PROJECT LENGTH: .070MI

NON-SIS
TYPE OF WORK:TRAFFIC SIGNALS
LANES EXIST/IMPROVED/ADDED: 4/ 0/ 0

FUND
CODE

2017

PHASE: PRELIMINARY ENGINEERING / RESPONSIBLE AGENCY: MANAGED BY LAKE COUNTY

HSP

32,000

TOTAL 437486 1

32,000

TOTAL 437486 1

32,000

ITEM NUMBER:439886 1
DISTRICT:05
ROADWAY ID:11200000

PROJECT DESCRIPTION:LAKE COUNTY PEDESTRIAN LIGHTING BUNDLE A
COUNTY:LAKE
PROJECT LENGTH: 18.585MI

SIS
TYPE OF WORK:LIGHTING
LANES EXIST/IMPROVED/ADDED: 6/ 0/ 0

FUND
CODE

2017

PHASE: PRELIMINARY ENGINEERING / RESPONSIBLE AGENCY: MANAGED BY FDOT

HSP

240,833

TOTAL 439886 1

240,833

TOTAL 439886 1

240,833

ITEM NUMBER:440583 1
DISTRICT:05
ROADWAY ID:11503500

PROJECT DESCRIPTION:CR 452 / LAKESHORE DR / RAIL CROSSING # 621814-J
COUNTY:LAKE
PROJECT LENGTH: .020MI

NON-SIS
TYPE OF WORK:RAIL SAFETY PROJECT
LANES EXIST/IMPROVED/ADDED: 2/ 0/ 0

FUND
CODE

2017

PHASE: RAILROAD AND UTILITIES / RESPONSIBLE AGENCY: MANAGED BY FDOT

RHP

201,102

TOTAL 440583 1

201,102

TOTAL 440583 1

201,102

ITEM NUMBER:440584 1
DISTRICT:05
ROADWAY ID:11000029

PROJECT DESCRIPTION:BAY ROAD / CROSSING #621821-U
COUNTY:LAKE
PROJECT LENGTH: .001MI

NON-SIS
TYPE OF WORK:RAIL SAFETY PROJECT
LANES EXIST/IMPROVED/ADDED: 2/ 0/ 0

FUND
CODE

2017

PHASE: RAILROAD AND UTILITIES / RESPONSIBLE AGENCY: MANAGED BY FDOT

RHP

185,926

TOTAL 440584 1

185,926

TOTAL 440584 1

185,926

FLORIDA DEPARTMENT OF TRANSPORTATION
 OFFICE OF WORK PROGRAM
 ANNUAL OBLIGATIONS REPORT
 =====
HIGHWAYS
 =====

ITEM NUMBER:440585 1
 DISTRICT:05
 ROADWAY ID:11503500

PROJECT DESCRIPTION:LAKESHORE DRIVE / CROSSING #622014-B
 COUNTY:LAKE
 PROJECT LENGTH: .200MI

NON-SIS
 TYPE OF WORK:RAIL SAFETY PROJECT
 LANES EXIST/IMPROVED/ADDED: 2/ 0/ 0

FUND
 CODE

2017

PHASE: RAILROAD AND UTILITIES / RESPONSIBLE AGENCY: MANAGED BY FDOT

RHP

184,273

TOTAL 440585 1

184,273

TOTAL 440585 1

184,273

ITEM NUMBER:440599 1
 DISTRICT:05
 ROADWAY ID:

PROJECT DESCRIPTION:CR-44 / CROSSING #622027-C
 COUNTY:LAKE
 PROJECT LENGTH: .000

NON-SIS
 TYPE OF WORK:RAIL SAFETY PROJECT
 LANES EXIST/IMPROVED/ADDED: 0/ 0/ 0

FUND
 CODE

2017

PHASE: RAILROAD AND UTILITIES / RESPONSIBLE AGENCY: MANAGED BY FDOT

RHP

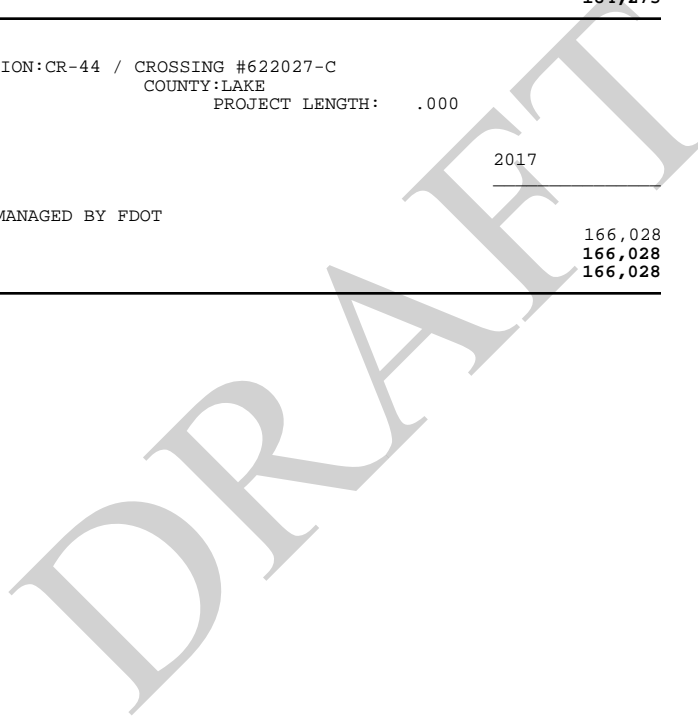
166,028

TOTAL 440599 1

166,028

TOTAL 440599 1

166,028



FLORIDA DEPARTMENT OF TRANSPORTATION
OFFICE OF WORK PROGRAM
ANNUAL OBLIGATIONS REPORT
=====

HIGHWAYS
=====

ITEM NUMBER:240418 2 PROJECT DESCRIPTION:SR 48 FROM E OF I-75 RAMPS TO CR 475 (MAIN ST)
DISTRICT:05 COUNTY:SUMTER
ROADWAY ID:18060000 PROJECT LENGTH: 1.365MI

NON-SIS
TYPE OF WORK:ADD LANES & REHABILITATE PVMNT
LANES EXIST/IMPROVED/ADDED: 2/ 0/ 2

FUND CODE	2017
PHASE: RIGHT OF WAY / RESPONSIBLE AGENCY: MANAGED BY FDOT	
SA	-251,915
SL	-273,562
PHASE: CONSTRUCTION / RESPONSIBLE AGENCY: MANAGED BY FDOT	
SA	-9,402
SL	356,447
SN	-2,649
TOTAL 240418 2	-181,081
TOTAL 240418 2	-181,081

ITEM NUMBER:242626 2 PROJECT DESCRIPTION:I-75 FROM HERNANDO CO LINE TO CR 470
DISTRICT:05 COUNTY:SUMTER
ROADWAY ID:18130000 PROJECT LENGTH: 13.083MI

SIS
TYPE OF WORK:ADD LANES & RECONSTRUCT
LANES EXIST/IMPROVED/ADDED: 4/ 4/ 2

FUND CODE	2017
PHASE: CONSTRUCTION / RESPONSIBLE AGENCY: MANAGED BY FDOT	
NHPP	375,475
SL	455,446
TOTAL 242626 2	830,921
TOTAL 242626 2	830,921

ITEM NUMBER:242626 3 PROJECT DESCRIPTION:I-75 FROM CR 470 TO SR91(FLOIDA TURNPIKE)
DISTRICT:05 COUNTY:SUMTER
ROADWAY ID:18130000 PROJECT LENGTH: 7.595MI

SIS
TYPE OF WORK:ADD LANES & RECONSTRUCT
LANES EXIST/IMPROVED/ADDED: 4/ 4/ 2

FUND CODE	2017
PHASE: RAILROAD AND UTILITIES / RESPONSIBLE AGENCY: MANAGED BY FDOT	
NHPP	1,132,234
PHASE: CONSTRUCTION / RESPONSIBLE AGENCY: MANAGED BY FDOT	
NHPP	3,112,281
TOTAL 242626 3	4,244,515
TOTAL 242626 3	4,244,515

ITEM NUMBER:430132 1 PROJECT DESCRIPTION:SR 35 (US 301) FROM CR 470 TO SR 44
DISTRICT:05 COUNTY:SUMTER
ROADWAY ID:18010000 PROJECT LENGTH: 7.702MI

NON-SIS
TYPE OF WORK:ADD LANES & RECONSTRUCT
LANES EXIST/IMPROVED/ADDED: 2/ 2/ 2

FUND CODE	2017
PHASE: PRELIMINARY ENGINEERING / RESPONSIBLE AGENCY: MANAGED BY FDOT	
SN	1,063,005
TOTAL 430132 1	1,063,005
TOTAL 430132 1	1,063,005

FLORIDA DEPARTMENT OF TRANSPORTATION
OFFICE OF WORK PROGRAM
ANNUAL OBLIGATIONS REPORT
=====

HIGHWAYS
=====

ITEM NUMBER:430653 1 PROJECT DESCRIPTION:SR 471 FROM POLK CO LINE TO 1.83MI S OF UNNAMED CANAL
DISTRICT:05 COUNTY:SUMTER
ROADWAY ID:18110000 PROJECT LENGTH: 5.054MI

NON-SIS
TYPE OF WORK:RESURFACING
LANES EXIST/IMPROVED/ADDED: 2/ 2/ 0

FUND CODE	2017
<hr/>	
PHASE: CONSTRUCTION / RESPONSIBLE AGENCY: MANAGED BY FDOT	
SN	-1,898
TOTAL 430653 1	-1,898
TOTAL 430653 1	-1,898

ITEM NUMBER:434700 1 PROJECT DESCRIPTION:CR 48 FROM CITRUS CO LINE TO WEST OF CR 616
DISTRICT:05 COUNTY:SUMTER
ROADWAY ID:18060000 PROJECT LENGTH: 7.431MI

NON-SIS
TYPE OF WORK:PAVE SHOULDERS
LANES EXIST/IMPROVED/ADDED: 4/ 0/ 0

FUND CODE	2017
<hr/>	
PHASE: PRELIMINARY ENGINEERING / RESPONSIBLE AGENCY: MANAGED BY FDOT	
HSP	-4,922
SA	16
PHASE: CONSTRUCTION / RESPONSIBLE AGENCY: MANAGED BY SUMTER COUNTY	
HSP	2,393,222
TOTAL 434700 1	2,388,316
TOTAL 434700 1	2,388,316

ITEM NUMBER:434701 1 PROJECT DESCRIPTION:CR 476 FROM HERNANDO CO LINE TO SR 35 (US 301)
DISTRICT:05 COUNTY:SUMTER
ROADWAY ID:18100000 PROJECT LENGTH: 9.065MI

NON-SIS
TYPE OF WORK:SIGNING/PAVEMENT MARKINGS
LANES EXIST/IMPROVED/ADDED: 0/ 0/ 0

FUND CODE	2017
<hr/>	
PHASE: PRELIMINARY ENGINEERING / RESPONSIBLE AGENCY: MANAGED BY FDOT	
HSP	-1,992
PHASE: PRELIMINARY ENGINEERING / RESPONSIBLE AGENCY: MANAGED BY SUMTER COUNTY	
HSP	-5,625
PHASE: CONSTRUCTION / RESPONSIBLE AGENCY: MANAGED BY FDOT	
HSP	10,000
TOTAL 434701 1	2,383
TOTAL 434701 1	2,383

ITEM NUMBER:434912 1 PROJECT DESCRIPTION:CR 470 FROM CR 527 TO SR 91 (FL TURNPIKE)
DISTRICT:05 COUNTY:SUMTER
ROADWAY ID:18580000 PROJECT LENGTH: 9.019MI

NON-SIS
TYPE OF WORK:ADD LANES & REHABILITATE PVMNT
LANES EXIST/IMPROVED/ADDED: 2/ 0/ 2

FUND CODE	2017
<hr/>	
PHASE: PRELIMINARY ENGINEERING / RESPONSIBLE AGENCY: MANAGED BY FDOT	
SL	33,402
SN	601,010
TOTAL 434912 1	634,412
TOTAL 434912 1	634,412

FLORIDA DEPARTMENT OF TRANSPORTATION
 OFFICE OF WORK PROGRAM
 ANNUAL OBLIGATIONS REPORT
 =====
HIGHWAYS
 =====

ITEM NUMBER:435476 1
 DISTRICT:05
 ROADWAY ID:18130000

PROJECT DESCRIPTION:I-75 @ CR 514 FROM 0.5 MILES W OF I-75 TO CR 525 EXTENSION
 COUNTY:SUMTER
 PROJECT LENGTH: .250MI

SIS
 TYPE OF WORK:INTERCHANGE (NEW)
 LANES EXIST/IMPROVED/ADDED: 4/ 0/ 2

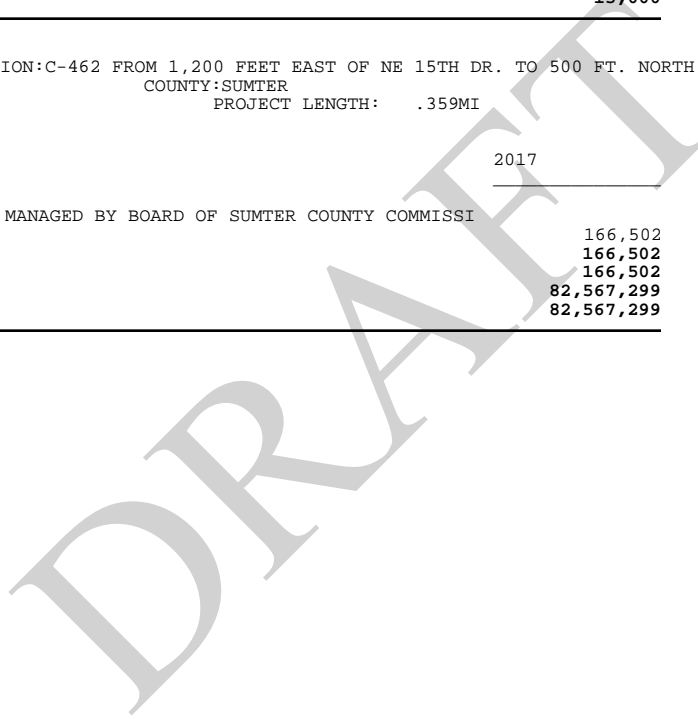
FUND CODE	2017
PHASE: PRELIMINARY ENGINEERING / RESPONSIBLE AGENCY: MANAGED BY FDOT	
SL	15,000
TOTAL 435476 1	15,000
TOTAL 435476 1	15,000

ITEM NUMBER:437604 1
 DISTRICT:05
 ROADWAY ID:18505000

PROJECT DESCRIPTION:C-462 FROM 1,200 FEET EAST OF NE 15TH DR. TO 500 FT. NORTH OF CR 228
 COUNTY:SUMTER
 PROJECT LENGTH: .359MI

NON-SIS
 TYPE OF WORK:PAVE SHOULDERS
 LANES EXIST/IMPROVED/ADDED: 2/ 0/ 0

FUND CODE	2017
PHASE: PRELIMINARY ENGINEERING / RESPONSIBLE AGENCY: MANAGED BY BOARD OF SUMTER COUNTY COMMISSI	
HSP	166,502
TOTAL 437604 1	166,502
TOTAL 437604 1	166,502
TOTAL DIST: 05	82,567,299
TOTAL HIGHWAYS	82,567,299



Summary of FHWA Performance Measures and Target Setting Dates				
Agency	Safety Measures	System Performance Measures*	Bridge Measures	Pavement Measures
FDOT Due Date (Target)	Aug 31, 2017	May 20, 2018	May 20, 2018	May 20, 2018
MPO Due Date (Target)	Feb 27, 2018	Nov 16, 2018	Nov 16, 2018	Nov 16, 2018
	# Fatalities	% of person-miles traveled on the Interstate that are Reliable	% of NHS Bridges Classified as Good Condition	% of pavements of the Interstate System in Good Condition
	Rate of Fatalities Per 100M VMT	% of person-miles traveled on the non-Interstate NHS that are Reliable	% of NHS Bridges Classified as Poor Condition	% of pavements of the Interstate System in Poor Condition
	# Serious Injuries	The sum of maximum Truck Travel Time Reliability (TTTR) for each reporting segment, divided by the total Interstate System miles		% of pavements of the non-Interstate NHS in Good Condition
	Rate of Serious Injuries per 100M VMT	Annual Hours of Peak Hour Excessive Delay (PHED) Per Capita (N/A for FL)		% of pavements of the non-Interstate NHS in Poor Condition
	# of non-motorized Fatalities and non-motorized serious injuries	Percent of Non-Single Occupancy Vehicle (SOV) Travel (N/A for FL)		
		Cumulative 2-Year and 4-Year emissions Reduction (kg/day) for CMAQ funded projects of reduced emissions for Nox, VOCs, CO, PM10, PM2.5 (N/A for FL)		

*Technical correction on due date forthcoming.

23 CFR 490 - Subpart B - National Performance Management Measures for the Highway Safety Improvement Program For Full Version of the Rule, See: https://www.federalregister.gov/documents/2016/03/15/2016-05202/national-performance-management-measures-highway-safety-improvement-program			
SECTION	REGULATION	KEY COMPONENT SYNOPSIS	KEY DATE
§ 490.201 - Purpose	The purpose of this subpart is to implement the requirements of 23 U.S.C. 150(c)(4) , which requires the Secretary of Transportation to establish performance measures for the purpose of carrying out the Highway Safety Improvement Program (HSIP) and for State departments of transportation (State DOTs) to use in assessing: (a) Serious injuries and fatalities per vehicle miles traveled (VMT); and (b) Number of serious injuries and fatalities.		
§ 490.207	National performance management measures for the Highway Safety Improvement Program.		
§ 490.207 (a)	There are five performance measures for the purpose of carrying out the HSIP. They are: (1) Number of fatalities; (2) Rate of fatalities; (3) Number of serious injuries; (4) Rate of serious injuries; and, (5) Number of non-motorized fatalities and non-motorized serious injuries.	The five safety performance measures are listed with three (fatalities, serious injuries and fatality rate) being shared with NHTSA.	
§ 490.209	Establishment of performance targets. For target setting see 490.207 & 490.209 for additional requirements.		
§ 490.209 (c)	The Metropolitan Planning Organizations (MPO) shall establish performance targets for each of the measures identified in § 490.207(a) , where applicable, in a manner that is consistent with the following: (1) The MPOs shall establish targets not later than 180 days after the respective State DOT establishes and reports targets in the State HSIP annual report. (2) The MPO target shall represent performance outcomes anticipated for the same calendar year as the State target. (3) After the MPOs within each State establish the targets, the State DOT must be able to provide those targets to FHWA, upon request. (4) For each performance measure, the MPOs shall establish a target by either: (i) Agreeing to plan and program projects so that they contribute toward the accomplishment of the State DOT safety target for that performance measure; or (ii) Committing to a quantifiable target for that performance measure for their metropolitan planning area. (5) The MPOs that establish quantifiable fatality rate or serious injury rate targets shall report the VMT estimate used for such targets and the methodology used to develop the estimate. The methodology should be consistent with other Federal reporting requirements, if applicable. (6) The MPO targets established under paragraph (c)(4) of this section specific to the metropolitan planning area shall represent the anticipated performance outcome for all public roadways within the metropolitan planning boundary regardless of ownership or functional class.	MPO shall establish the targets by either adopting a State's performance targets and supporting the State's effort at achieving those targets, or establishing its own quantifiable performance targets.	MPO's must establish targets by February 27, 2018.

23 CFR 490 - Subpart B - National Performance Management Measures for the Highway Safety Improvement Program For Full Version of the Rule, See: https://www.federalregister.gov/documents/2016/03/15/2016-05202/national-performance-management-measures-highway-safety-improvement-program			
SECTION	REGULATION	KEY COMPONENT SYNOPSIS	KEY DATE
§ 490.209 (d)	(1) The State DOT and relevant MPOs shall coordinate on the establishment of targets in accordance with 23 CFR part 450 to ensure consistency, to the maximum extent practicable.	State DOT & MPO's must coordinate their target setting with State DOT. Multi-state MPO's must support and contribute toward state targets in each respective	
	(2) The MPOs with multi-State boundaries that agree to plan and program projects to contribute toward State targets in accordance with paragraph (c)(4)(i) of this section shall plan and program safety projects in support of the State DOT targets for each area within each State (e.g., MPOs that extend into two States shall agree to plan and program projects to contribute toward two separate sets of targets (one set for each State)).		
§ 490.211	Determining whether a State department of transportation has met or made significant progress toward meeting performance targets. See Final Rule Section 490 - Subpart C.		
§ 490.213	Reporting of targets for the Highway Safety Improvement Program		
§ 490.213 (b)	The MPOs shall annually report their established safety targets to their respective State DOT, in a manner that is documented and mutually agreed upon by both parties.	MPOs must provide State DOT with safety targets.	
§ 490.213 (c)	The MPOs shall report baseline safety performance, VMT estimate and methodology if a quantifiable rate target was established, and progress toward the achievement of their targets in the system performance report in the metropolitan transportation plan in accordance with 23 CFR part 450 . Safety performance and progress shall be reported based on the following data sources:	MPOs must report baseline safety performance, VMT, etc. and progress towards targets in MTP.	
	(1) The most recent available Final FARS data for the fatality number. The FARS ARF may be used if Final FARS is not available;		
	(2) The most recent available Final FARS and MPO VMT estimate for the fatality rate. The FARS ARF may be used if Final FARS is not available;		
	(3) The most recent available Final FARS data for the non-motorized fatality number. The FARS ARF may be used if Final FARS is not available;		
	(4) State reported data for the serious injuries number;		
	(5) State reported data and MPO VMT estimate for the serious injuries rate; and		
(6) State reported data for the non-motorized serious injuries number.			

23 CFR Part 490 - Subpart D—National Performance Management Measures for Assessing Bridge Condition

For Full Version of the Rule, See:

<https://www.federalregister.gov/documents/2017/01/18/2017-00550/national-performance-management-measures-assessing-pavement-condition-for-the-national-highway>

SECTION	REGULATION	KEY COMPONENT SYNOPSIS	KEY DATE
§ 490.401 Purpose	The <u>purpose</u> of this subpart is to implement the requirements of 23 U.S.C. 150(c)(3)(A)(ii)(III), which requires the Secretary of Transportation to establish performance measures for the purpose of carrying out the NHPP and for State DOTs and MPOs to use in assessing the condition of bridges carrying the NHS which includes on and off-ramps connected to the NHS.		Effective Date: May 20, 2017
§ 490.403 Applicability	The section is only applicable to bridges carrying the NHS, which includes on- and off-ramps connected to the NHS.		
§ 490.405 Definitions.	The following definitions are only applicable to this subpart, unless otherwise provided: Structurally deficient as used in §§ 490.411 and 490.413 is a classification given to a bridge which has any component in Poor or worse condition or the adequacy of the waterway opening provided by the bridge is determined to be insufficient to the point of causing overtopping with intolerable traffic interruptions. Beginning with calendar year 2018 and thereafter, structurally deficient as used in §§ 490.411 and 490.413 is a classification given to a bridge which has any component in Poor or worse condition.	Current Structurally Deficient (SD) definition takes into consideration items 58, 59, 60, 62, 67 and 71. New definition consider only items 58, 59, 60 and 62.	Becomes effective January 1, 2018.
§ 490.101 Definitions	<u>Performance period</u> means a determined time period during which condition/performance is measured and evaluated to: Assess condition/performance with respect to baseline condition/performance; and track progress toward the achievement of the targets that represent the intended condition/performance level at the midpoint and at the end of that time period. The term “performance period” applies to all proposed measures in this part, except the measures proposed for the Highway Safety Improvement Program (HSIP) in subpart B of this part. Each performance period covers a 4-year duration beginning on a specified date (provided in § 490.105). <u>Target</u> means a quantifiable level of performance or condition, expressed as a value for the measure, to be achieved within a time period required by the Federal Highway Administration (FHWA).	All performance periods have a 4 year duration starting on January 1 and finishing in December 31.	First Performance Period: Begins: January 1, 2018 Ends: December 31, 2021
§ 490.407 National performance management measures for assessing bridge condition	(a) There are three classifications for the purpose of assessing bridge condition. They are: (1) Percentage of NHS bridges classified as in Good condition; (2) Percentage of NHS bridges classified as in Fair condition; and (3) Percentage of NHS bridges classified as in Poor condition. (b) [Reserved] (c) To carry out the NHPP, two of the three classifications are performance measures for State DOTs to use to assess bridge condition on the NHS. They are: (1) Percentage of NHS bridges classified as in Good condition; and (2) Percentage of NHS bridges classified as in Poor condition. (d) Determination of Good and Poor conditions are described in § 490.409. See full version of the rule for section § 490.409.	1. State DOTs and MPOs shall establish a minimum of two condition performance measures: good condition & poor condition performance measures. 2. Calculation of measure must also include on-and-off ramps connected to the NHS within a State; and bridges carrying the NHS that cross State borders (border bridges count toward both States DOTs calculations)	

23 CFR Part 490 - Subpart D—National Performance Management Measures for Assessing Bridge Condition

For Full Version of the Rule, See:

<https://www.federalregister.gov/documents/2017/01/18/2017-00550/national-performance-management-measures-assessing-pavement-condition-for-the-national-highway>

SECTION	REGULATION	KEY COMPONENT SYNOPSIS	KEY DATE
<p>§ 490.409 Calculation of National performance management measures for assessing bridge condition</p>	<p>(a) The bridge measures in § 490.407 shall be calculated in accordance with this section and used by State DOTs and MPOs to carry out the bridge condition related requirements of this part and by FHWA to make the significant progress determination specified in § 490.109.</p> <p>(b) The condition of bridges carrying the NHS, which includes on- and off-ramps connected to the NHS, shall be classified as Good, Fair, or Poor following the criteria specified in this paragraph. The assignment of a classification of Good, Fair, or Poor shall be based on the bridge's condition ratings for NBI Items 58—Deck, 59—Superstructure, 60—Substructure, and 62—Culverts. For the purposes of national performance measures under the NHPP, the method of assessment to determine the classification of a bridge will be the minimum of condition rating method (i.e., the condition ratings for lowest rating of a bridge's 3 NBI Items, 58—Deck, 59—Superstructure, and 60—Substructure). For culverts, the rating of its NBI Item, 62—Culverts, will determine its classification. The bridges carrying the NHS which includes on and off-ramps connected to the NHS will be classified as Good, Fair, or Poor based on the following criteria:</p> <p>(1) Good: When the lowest rating of the 3 NBI items for a bridge (Items 58—Deck, 59—Superstructure, 60—Substructure) is 7, 8, or 9, the bridge will be classified as Good. When the rating of NBI item for a culvert (Item 62—Culverts) is 7, 8, or 9, the culvert will be classified as Good.</p> <p>(2) Fair: When the lowest rating of the 3 NBI items for a bridge is 5 or 6, the bridge will be classified as Fair. When the rating of NBI item for a culvert is 5 or 6, the culvert will be classified as Fair.</p> <p>(3) Poor: When the lowest rating of the 3 NBI items for a bridge is 4, 3, 2, 1, or 0, the bridge will be classified as Poor. When the rating of NBI item for a culvert is 4, 3, 2, 1, or 0, the culvert will be classified as Poor.</p> <p>(c) The bridge measures specified in § 490.407(c) shall be calculated for the applicable bridges per paragraph (a) that pertain to each target established by the State DOT or MPO in §§ 490.105(e) and 490.105(f), respectively, as follows:</p> <p>(1) For § 490.407(c)(1), the measure for the percentage of bridges classified as in Good condition shall be computed and reported to the one tenth of a percent as follows: See full version of the rule - section § 490.409 for formula.</p> <p>(2) For § 490.407(c)(2), the measure for the percentage of bridges classified as in Poor condition shall be computed and reported to the one tenth of a percent as follows: See full version of the rule - section § 490.409 for formula.</p>	<p>1. The condition classification of Good, Fair, or Poor shall be based on the bridge's condition ratings for NBI Items 58—Deck, 59—Superstructure, 60—Substructure, and 62—Culverts.</p> <p>2. Performance measures are to be calculated only for:</p> <p style="margin-left: 20px;">a. % bridges in Good condition</p> <p style="margin-left: 20px;">b. % bridges in Poor condition</p> $100 \times \frac{\sum_{p=1}^{\text{POOR}} [\text{Length} \times \text{Width}]_{\text{Bridge } p}}{\sum_{s=1}^{\text{TOTAL}} [\text{Length} \times \text{Width}]_{\text{Bridge } s}}$ $100 \times \frac{\sum_{g=1}^{\text{GOOD}} [\text{Length} \times \text{Width}]_{\text{Bridge } g}}{\sum_{s=1}^{\text{TOTAL}} [\text{Length} \times \text{Width}]_{\text{Bridge } s}}$	

23 CFR Part 490 - Subpart D—National Performance Management Measures for Assessing Bridge Condition

For Full Version of the Rule, See:

<https://www.federalregister.gov/documents/2017/01/18/2017-00550/national-performance-management-measures-assessing-pavement-condition-for-the-national-highway>

SECTION	REGULATION	KEY COMPONENT SYNOPSIS	KEY DATE
<p>§ 490.105 Establishment of performance targets</p>	<p>(a) In general. State departments of transportation (State DOT) shall establish performance targets for all measures specified in paragraph (c) of this section for the respective target scope identified in paragraph (d) of this section with the requirements specified in paragraph (e) of this section, and the Metropolitan Planning Organizations (MPO) shall establish performance targets for all measures specified in paragraph (c) of this section for respective target scope identified in paragraph (d) of this section with the requirements specified in paragraph (f) of this section.</p> <p>(c) Applicable measures. State DOTs and MPOs that include, within their respective geographic boundaries, any portion of the applicable transportation network shall establish performance targets for the performance measures identified in 23 CFR sections—</p> <p>(3) 490.407(c)(1) and 490.407(c)(2) for the condition of bridges on the NHS.</p> <p>(d) Target scope. Targets established by the State DOT and MPO shall, regardless of ownership, represent the transportation network, including bridges that cross State borders, that are applicable to the measures as specified in paragraphs (d)(1) and (2) of this section.</p> <p>(1) State DOTs and MPOs shall establish Statewide and metropolitan planning area wide targets, respectively, that represent the condition/performance of the transportation network that is applicable to the measures, as specified in 23 CFR sections—</p> <p>(i) 490.303 for the condition of pavements on the Interstate System measures specified in §§ 490.307(a)(1) and (a)(2);</p> <p>(ii) 490.303 for the condition of pavements on the National Highway System (NHS) (excluding the Interstate) measures specified in §§ 490.307(a)(3) and (a)(4); and</p> <p>(iii) 490.403 for the condition of bridges on the NHS measures specified in §§ 490.407(c)(1) and (c)(2).</p> <p>(2) [Reserved]</p> <p>(3) For the purpose of target establishment in this section, reporting targets and progress evaluation in § 490.107 and significant progress determination in § 490.109, State DOTs shall declare and describe the urbanized area boundaries within the State boundary in the Baseline Performance Period Report required by § 490.107(b)(1). Any changes in urbanized area boundaries during a performance period would not be accounted for until the following performance period.</p>	<p>1. Applicable Measures. State DOTs and MPOs respective geographic boundaries.</p> <p>2. State DOTs and MPOs shall establish Statewide and metropolitan planning area wide targets, respectively.</p>	

23 CFR Part 490 - Subpart D—National Performance Management Measures for Assessing Bridge Condition

For Full Version of the Rule, See:

<https://www.federalregister.gov/documents/2017/01/18/2017-00550/national-performance-management-measures-assessing-pavement-condition-for-the-national-highway>

SECTION	REGULATION	KEY COMPONENT SYNOPSIS	KEY DATE
<p>§ 490.105(f) Establishment of performance targets (MPOs)</p>	<p>(f) The MPOs shall establish targets for each of the performance measures identified in paragraph (c) of this section for the respective target scope identified in paragraph (d) of this section as follows:</p> <p>(1) Schedule. The MPOs shall establish targets no later than 180 days after the respective State DOT(s) establishes their targets, described in paragraph (e)(1) of this section.</p> <p>(i) The MPOs shall establish 4-year targets, described in paragraph (e)(4)(iv) of this section, for all applicable measures, described in paragraphs (c) and (d) of this section.</p> <p>(ii) [Reserved.]</p> <p>(2) Coordination. The MPOs shall coordinate with relevant State DOT(s) on the selection of targets in accordance with 23 U.S.C. 134(h)(2)(B)(i)(II) to ensure consistency, to the maximum extent practicable.</p> <p>(3) Target establishment options. For each performance measure identified in paragraph (c) of this section, MPOs shall establish a target by either:</p> <p>(i) Agreeing to plan and program projects so that they contribute toward the accomplishment of the relevant State DOT target for that performance measure; or</p> <p>(ii) Committing to a quantifiable target for that performance measure for their metropolitan planning area.</p> <p>(4) MPOs serving a multistate metropolitan planning area.—For each performance measure identified in paragraph (c)(1) through (c)(3) of this section, MPOs, with metropolitan planning areas extending across multiple State boundaries shall follow these requirements:</p> <p>(i) For each measure, MPOs may choose different target establishment options, provided in paragraph (3) of this section, for each portion of the metropolitan area within each State.</p> <p>(ii) If MPOs choose the option to agree to plan and program projects to contribute toward State DOT targets, in accordance with paragraph (3)(i) of this section, for a measure, then they shall plan and program projects in support of State DOT targets for each portion of the metropolitan area within each State.</p>	<p>1. MPO shall establish 4-year targets by either adopting a State's performance targets and supporting the State's effort at achieving those targets, or establishing its own quantifiable performance targets.</p> <p>2. MPO shall coordinate with relevant State DOT(s) on the selection of targets.</p> <p>3. If the State DOT adjusts a 4-year target in the State DOT's Mid Performance Period Progress Report, MPO can decide to contribute to the adjusted target or commit to a new quantifiable target.</p>	<p>MPOs to establish targets within 180 days of relevant State DOT establishing targets.</p>

23 CFR Part 490 - Subpart D—National Performance Management Measures for Assessing Bridge Condition

For Full Version of the Rule, See:

<https://www.federalregister.gov/documents/2017/01/18/2017-00550/national-performance-management-measures-assessing-pavement-condition-for-the-national-highway>

SECTION	REGULATION	KEY COMPONENT SYNOPSIS	KEY DATE
<p>§ 490.105(f) Establishment of performance targets (MPOs)</p>	<p>(5)–(6) [Reserved]</p> <p>(7) MPO response to State DOT target adjustment.—For the established targets in paragraph (3) of this section, if the State DOT adjusts a 4-year target in the State DOT’s Mid Performance Period Progress Report and if, for that respective target, the MPO established a target by supporting the State DOT target as allowed under paragraph (f)(3)(i) of this section, then the MPO shall, within 180 days, report to the State DOT whether they will either:</p> <p>(i) Agree to plan a program of projects so that they contribute to the adjusted State DOT target for that performance measure; or</p> <p>(ii) Commit to a new quantifiable target for that performance measure for its metropolitan planning area.</p> <p>(8) Target adjustment. If the MPO establishes its target by committing to a quantifiable target, described in paragraph (f)(3)(ii) of this section, then the MPOs may adjust its target(s) in a manner that is mutually agreed upon by the State DOT and MPO.</p> <p>(9) Reporting. The MPOs shall report targets and progress toward the achievement of their targets as specified in § 490.107(c). After the MPOs establish or adjust their targets, the relevant State DOT(s) must be able to provide these targets to FHWA, upon request.</p>		
<p>§ 490.107 Reporting on performance targets</p>	<p>(c) MPO Report. The MPOs shall establish targets in accordance with § 490.105 and report targets and progress toward the achievement of their targets in a manner that is consistent with the following:</p> <p>(1) The MPOs shall report their established targets to their respective State DOT in a manner that is documented and mutually agreed upon by both parties.</p> <p>(2) The MPOs shall report baseline condition/performance and progress toward the achievement of their targets in the system performance report in the metropolitan transportation plan in accordance with Part 450 of this chapter.</p>		

23 CFR Part 490 - Subpart C—National Performance Management Measures for Assessing Pavement Condition

For full version of the Rule, please see:

<https://www.federalregister.gov/documents/2017/01/18/2017-00550/national-performance-management-measures-assessing-pavement-condition-for-the-national-highway#sectno-reference-490.105%20>

Regulation Section	Regulation Text	KEY COMPONENT SYNOPSIS	KEY DATE
§ 490.301 Purpose	<p>The purpose of this subpart is to implement the following statutory requirements of 23 U.S.C. 150(c)(3) to:</p> <p>(a) Establish measures for State DOTs and MPOs to assess the condition of pavements on the Interstate System;</p> <p>(b) Establish measures for State DOTs and MPOs to assess the condition of pavements on the NHS (excluding the Interstate);</p> <p>(c) Establish minimum levels for pavement condition on the Interstate System, only for purposes of carrying out 23 U.S.C. 119(f)(1);</p> <p>(d) Establish data elements that are necessary to collect and maintain standardized data to carry out a performance-based approach; and</p> <p>(e) Consider regional differences in establishing the minimum levels for pavement conditions on the Interstate System.</p>		Effective Date: May 20, 2017
§ 490.303 Applicability	The performance measures in this subpart are applicable to the mainline highways on the Interstate System and on the non-Interstate NHS.		
§ 490.101 Definitions	<p><u>Performance period</u> means a determined time period during which condition/performance is measured and evaluated to: Assess condition/performance with respect to baseline condition/performance; and track progress toward the achievement of the targets that represent the intended condition/performance level at the midpoint and at the end of that time period. The term “performance period” applies to all proposed measures in this part, except the measures proposed for the Highway Safety Improvement Program (HSIP) in subpart B of this part. Each performance period covers a 4-year duration beginning on a specified date (provided in § 490.105).</p> <p><u>Target</u> means a quantifiable level of performance or condition, expressed as a value for the measure, to be achieved within a time period required by the Federal Highway Administration (FHWA).</p>	All performance periods have a 4 year duration starting on January 1 and finishing in December 31.	First Performance Period: Begins: January 1, 2018 Ends: December 31, 2021
§ 490.307 National performance management measures for assessing pavement condition	<p>To carry out the NHPP, the performance measures for State DOTs to assess pavement condition are:</p> <p>(1) Percentage of pavements of the Interstate System in Good condition;</p> <p>(2) Percentage of pavements of the Interstate System in Poor condition;</p> <p>(3) Percentage of pavements of the non-Interstate NHS in Good condition; and</p> <p>(4) Percentage of pavements of the non-Interstate NHS in Poor condition.</p>		

23 CFR Part 490 - Subpart C—National Performance Management Measures for Assessing Pavement Condition

For full version of the Rule, please see:

<https://www.federalregister.gov/documents/2017/01/18/2017-00550/national-performance-management-measures-assessing-pavement-condition-for-the-national-highway#sectno-reference-490.105%20>

Regulation Section	Regulation Text	KEY COMPONENT SYNOPSIS				KEY DATE
§ 490.313 Calculation of performance management measures	<p>Calculation of performance management measures</p> <p>(a) The pavement measures in § 490.307 shall be calculated in accordance with this section and used by State DOTs and MPOs to carry out the pavement condition related requirements of this part, and by FHWA to make the significant progress and minimum condition determinations specified in §§ 490.109 and 490.317, respectively.</p> <p>(b) The performance measure for pavements shall be calculated based on the data collected in § 490.309 and pavement condition metrics computed in § 490.311. The performance measure for pavements shall be based on three condition ratings of Good, Fair, and Poor calculated for each pavement section.</p> <p>Note: Refer to the final rules section § 490.313 for rating determination. The summary of this section and rating factors have been shown under the " Key Component Synopsis" column of this excel sheet</p>	Rating	Good	Fair	Poor	
		IRI (Inch/mile)	<95	95-170	>170	
		PSR (0.0-5.0 Value)	≥ 0.4	2.0-4.0	≤2.0	
		Cracking Percent (%)	<5	CRCP: 5-10 Jointed: 5-15 Asphalt: 5-20	>10 >15 >20	
		Rutting (inches)	<0.20	0.20-0.40	>0.40	
		Faulting (inches)	<0.10	0.10-0.15	>0.15	
§ 490.103 Data requirements.	<p>a) In general. Unless otherwise noted below, the data requirements in this section applies to the measures identified in subparts C and D of this part. Additional data requirements for specific performance measures are identified in 23 CFR sections—</p> <p>(3) 490.409 for the condition of bridges on the NHS;</p>					

DRAFT

23 CFR Part 490 - Subpart C—National Performance Management Measures for Assessing Pavement Condition

For full version of the Rule, please see:

<https://www.federalregister.gov/documents/2017/01/18/2017-00550/national-performance-management-measures-assessing-pavement-condition-for-the-national-highway#sectno-reference-490.105%20>

Regulation Section	Regulation Text	KEY COMPONENT SYNOPSIS	KEY DATE
§ 490.105 Establishment of performance targets	<p>(a) In general. State departments of transportation (State DOT) shall establish performance targets for all measures specified in paragraph (c) of this section for the respective target scope identified in paragraph (d) of this section with the requirements specified in paragraph (e) of this section, and the Metropolitan Planning Organizations (MPO) shall establish performance targets for all measures specified in paragraph (c) of this section for respective target scope identified in paragraph (d) of this section with the requirements specified in paragraph (f) of this section.</p> <p>(c) Applicable measures. State DOTs and MPOs that include, within their respective geographic boundaries, any portion of the applicable transportation network shall establish performance targets for the performance measures identified in 23 CFR sections—</p> <p style="margin-left: 20px;">(1) 490.307(a)(1) and 490.307(a)(2) for the condition of pavements on the Interstate System</p> <p style="margin-left: 20px;">(2) 490.307(a)(3) and 490.307(a)(4) for the condition of pavements on the National Highway System (NHS) (excluding the Interstate)</p> <p>(d) Target scope. Targets established by the State DOT and MPO shall, regardless of ownership, represent the transportation network, including bridges that cross State borders, that are applicable to the measures as specified in paragraphs (d)(1) and (2) of this section.</p> <p style="margin-left: 20px;">(1) State DOTs and MPOs shall establish Statewide and metropolitan planning area wide targets, respectively, that represent the condition/performance of the transportation network that is applicable to the measures, as specified in 23 CFR sections—</p> <p style="margin-left: 40px;">(i) 490.303 for the condition of pavements on the Interstate System measures specified in §§ 490.307(a)(1) and (a)(2);</p> <p style="margin-left: 40px;">(ii) 490.303 for the condition of pavements on the National Highway System (NHS) (excluding the Interstate) measures specified in §§ 490.307(a)(3) and (a)(4);</p> <p style="margin-left: 20px;">(2) [Reserved]</p> <p style="margin-left: 20px;">(3) For the purpose of target establishment in this section, reporting targets and progress evaluation in § 490.107 and significant progress determination in § 490.109, State DOTs shall declare and describe the urbanized area boundaries within the State boundary in the Baseline Performance Period Report required by § 490.107(b)(1). Any changes in urbanized area boundaries during a performance period would not be accounted for until the following performance period.</p>	<p>1. Applicable Measures. State DOTs and MPOs respective geographic boundaries.</p> <p>2 State DOTs and MPOs shall establish Statewide and metropolitan planning area wide targets, respectively.</p>	<p>State DOT's to establish targets by: May 20, 2018</p>

23 CFR Part 490 - Subpart C—National Performance Management Measures for Assessing Pavement Condition

For full version of the Rule, please see:

<https://www.federalregister.gov/documents/2017/01/18/2017-00550/national-performance-management-measures-assessing-pavement-condition-for-the-national-highway#sectno-reference-490.105%20>

Regulation Section	Regulation Text	KEY COMPONENT SYNOPSIS	KEY DATE
§ 490.105(f) Establishment of performance targets (MPOs)	<p>(f) The MPOs shall establish targets for each of the performance measures identified in paragraph (c) of this section for the respective target scope identified in paragraph (d) of this section as (5)–(6) [Reserved]</p> <p>(7) MPO response to State DOT target adjustment.—For the established targets in paragraph (3) of this section, if the State DOT adjusts a 4-year target in the State DOT’s Mid Performance Period Progress Report and if, for that respective target, the MPO established a target by supporting the State DOT target as allowed under paragraph (f)(3)(i) of this section, then the MPO shall, within 180 days, report to the State DOT whether they will either:</p> <p style="padding-left: 20px;">(i) Agree to plan a program of projects so that they contribute to the adjusted State DOT target for that performance measure; or</p> <p style="padding-left: 20px;">(ii) Commit to a new quantifiable target for that performance measure for its metropolitan planning area.</p> <p>(8) Target adjustment. If the MPO establishes its target by committing to a quantifiable target, described in paragraph (f)(3)(ii) of this section, then the MPOs may adjust its target(s) in a manner that is mutually agreed upon by the State DOT and MPO.</p> <p>(9) Reporting. The MPOs shall report targets and progress toward the achievement of their targets as specified in § 490.107(c). After the MPOs establish or adjust their targets, the relevant State DOT(s) must be able to provide these targets to FHWA, upon request.</p>	<ol style="list-style-type: none"> 1. MPO shall establish 4-year targets by either adopting a State's performance targets and supporting the State's effort at achieving those targets, or establishing its own quantifiable performance targets. 2. MPO shall coordinate with relevant State DOT(s) on the selection of targets. 3. If the State DOT adjusts a 4-year target in the State DOT’s Mid Performance Period Progress Report, MPO can decide to contribute to the adjusted target or commit to a new quantifiable target. 	<p>MPOs to establish targets within 180 days of relevant State DOT establishing targets.</p> <p>- Note: A multiple planning area may choose different target establishment options for the portion of the planning area within each state.</p>
§ 490.107 Reporting on performance targets	<p>(c) MPO Report. The MPOs shall establish targets in accordance with § 490.105 and report targets and progress toward the achievement of their targets in a manner that is consistent with the following:</p> <p style="padding-left: 20px;">(1) The MPOs shall report their established targets to their respective State DOT in a manner that is documented and mutually agreed upon by both parties.</p> <p style="padding-left: 20px;">(2) The MPOs shall report baseline condition/performance and progress toward the achievement of their targets in the system performance report in the metropolitan transportation plan in accordance with Part 450 of this chapter.</p>		

NATIONAL PERFORMANCE MANAGEMENT MEASURES 23 CFR Part 490
System Performance/Freight/CMAQ Performance Measures (Subparts A, E, F, G, and H)

MPO REQUIREMENTS

Citation	Requirement
490.103(e)	A State DOT and MPO(s) must use the same travel time data set for each reporting segment for the purposes of calculating the metrics and measures.
490.103(e)(1)	[If used] State DOTs and MPOs shall use the same equivalent data source(s) for a calendar year;
490.103(e)(2)	The State DOT shall request FHWA approval for the use of such equivalent data source(s) no later than October 1st before the beginning of the calendar year in which the data source would be used to calculate metrics and FHWA must approve the use of that data source prior to a State DOT and MPO(s)'s implementation and use of that data source.
490.103(e)(5)	If approved by FHWA, the equivalent data source(s) shall... (see requirements under 490.103(e)(5))
490.103(f)(4)	The State DOT and applicable MPOs shall document, in manner that mutually agreed upon by all relevant parties, the coordination and agreement on the travel time data set and the defined reporting segments.
490.105(a)	The MPOs shall establish performance targets for all measures specified in paragraph (c) of this section for respective target scope identified in paragraph (d) of this section with the requirements specified in paragraph (f) of this section.
490.105(c)	State DOTs and MPOs that include, within their respective geographic boundaries, any portion of the applicable transportation network or area shall establish performance targets for the performance measures identified in 23 CFR sections—... (4) 490.507(a)(1) and (2) for the NHS Travel Time Reliability;... (6) 490.607 for the freight movement on the Interstate System;
490.105(d)	Targets established by State DOTs and MPOs shall, regardless of ownership, represent the transportation network or geographic area, including bridges that cross State borders, that are applicable to the measures as specified in paragraphs (d)(1) and (2) of this section.
490.105(d)(1)	State DOTs and MPOs shall establish statewide and metropolitan planning area wide targets, respectively, that represent the condition/performance of the transportation network or geographic area that are applicable to the measures, as specified in 23 CFR sections—... (iv) 490.503(a)(1) for the Travel Time Reliability measures specified in § 490.507(a)(1) and (2);... (vi) 490.603 for the Freight Reliability measure specified in § 490.607;
490.105(f)	The MPOs shall establish targets for each of the performance measures identified in paragraph (c) of this section for the respective target scope identified in paragraph (d) of this section as follows:
490.105(f)(1)	The MPOs shall establish targets no later than 180 days after the respective State DOT(s) establishes their targets, as provided in paragraph (e)(1) of this section.
490.105(f)(1)(i)	The MPOs shall establish 4-year targets, described in paragraph (e)(4)(iv) of this section, for all applicable measures, described in paragraphs (c) and (d) of this section.
490.105(f)(1)(i)	If an MPO does not meet the criteria described in paragraph (f)(5)(i), (f)(5)(ii), or (f)(6)(iii) of this section, the MPO is not required to establish 2-year target(s) for the corresponding measure(s).

Citation	Requirement
490.105(f)(2)	The MPOs shall coordinate with relevant State DOT(s) on the selection of targets in accordance with <u>23 U.S.C. 134(h)(2)(B)(i)(II)</u> to ensure consistency, to the maximum extent practicable.
490.105(f)(3)	For each performance measure identified in paragraph (c) of this section, except the CMAQ Traffic Congestion measures in paragraph (f)(5) of this section, and MPOs meeting the criteria under paragraph (f)(6)(iii) of this section for Total Emissions Reduction measure, the MPOs shall establish targets by either:
490.105(f)(3)(i)	Agreeing to plan and program projects so that they contribute toward the accomplishment of the relevant State DOT target for that performance measure; or
490.105(f)(3)(ii)	Committing to a quantifiable target for that performance measure for their metropolitan planning area.
490.105(f)(5)(iv)	If an MPO does not meet the criteria specified in paragraph (f)(5)(i) or (ii) of this section at the time that is 1 year before when the State DOT Baseline Performance Period Report is due to FHWA, then that MPO is not required to establish targets for the CMAQ Traffic Congestion measure for that performance period.
490.105(f)(5)(v)	If the portion of the metropolitan planning area boundary within the urbanized area, in paragraph (f)(5)(i) or (ii) of this section, does not contain any part of a nonattainment or maintenance area for the applicable criteria pollutants, as specified in § 490.703, at the time that is 1 year before when the State DOT Mid Performance Period Progress Report is due to FHWA, as described in paragraph (f)(5)(iii)(F) of this section, then that MPO is not required to meet the requirements in § 490.107 for the CMAQ Traffic Congestion measures for that urbanized area for the remainder of that performance period.
490.105(f)(6)(vii)	If a metropolitan planning area boundary does not contain any part of nonattainment or maintenance areas for applicable criteria pollutants 1 year before when the State DOT Baseline Performance Period Report is due to FHWA, then that MPO is not required to establish targets for the Total Emissions Reduction measure for that performance period.
490.105(f)(6)(viii)	If the metropolitan planning area boundary, in paragraph (f)(6)(i) of this section, does not contain any part of a nonattainment or maintenance area for the applicable criteria pollutants, as specified in § 490.803, 1 year before the State DOT Mid Performance Period Progress Report is due to FHWA, as described in paragraph (f)(6)(v) of this section, then that MPO is not required to meet the requirements in § 490.107 for the Total Emissions Reduction measure for that applicable criteria pollutant or precursor for the remainder of that performance period.
490.105(f)(7)	For the established targets in paragraph (f)(3) of this section, if the State DOT adjusts a 4-year target in the State DOT's Mid Performance Period Progress Report and if, for that respective target, the MPO established a target by supporting the State DOT target as allowed under paragraph (f)(3)(i) of this section, then the MPO shall, within 180 days, report to the State DOT whether it will either:
490.105(f)(7)(i)	Agree to plan a program of projects so that they contribute to the adjusted State DOT target for that performance measure; or
490.105(f)(7)(ii)	Commit to a new quantifiable target for that performance measure for its metropolitan planning area.
490.105(f)(8)	If the MPO establishes its target by committing to a quantifiable target, described in paragraph (f)(3)(ii) of this section or establishes target(s) for the Total Emissions Reduction measure required in paragraph (f)(6)(iii) of this section, then the MPOs may adjust its target(s) in a manner that is collectively developed, documented, and mutually agreed upon by the State DOT and MPO.
490.105(f)(9)	The MPOs shall report targets and progress toward the achievement of their targets as specified in § 490.107(c).
490.107(a)	All State DOTs and MPOs shall report the information specified in this section for the targets required in § 490.105.

Citation	Requirement
490.107(a)(1)	All State DOTs and MPOs shall report in accordance with the schedule and content requirements under paragraphs (b) and (c) of this section, respectively.
490.107(c)	The MPOs shall establish targets in accordance with § 490.105 and report targets and progress toward the achievement of their targets in a manner that is consistent with the following... (see requirements under 490.107(c)).
490.107(c)(1)	The MPOs shall report their established targets to their respective State DOT in a manner that is documented and mutually agreed upon by both parties.
490.501	The purpose of this subpart is to implement the requirements of 23 U.S.C. 150(c)(3)(A)(ii)(IV) and (V) to establish performance measures for State Departments of Transportation (State DOTs) and Metropolitan Planning Organizations (MPOs) to use to assess: (a) Performance of the Interstate System; and (b) Performance of the non-Interstate National Highway System (NHS).
490.509(d)	The average occupancy factors for the State and/or metropolitan area (as applicable) needed to calculate Travel Time Reliability measures shall come from the most recently available data tables published by FHWA unless using other allowed data source(s).
490.601	The purpose of this subpart is to implement the requirements of 23 U.S.C. 150(c)(6) to establish performance measures for State Departments of Transportation (State DOTs) and the Metropolitan Planning Organizations (MPOs) to use to assess the national freight movement on the Interstate System.
490.613(a)	The performance for freight movement on the Interstate in § 490.607 (the Freight Reliability measure) shall be calculated in accordance with this section by State DOTs and MPOs to carry out the freight movement on the Interstate System related requirements of this part, and by FHWA to make the significant progress determinations specified in § 490.109 and to report on freight performance of the Interstate System.