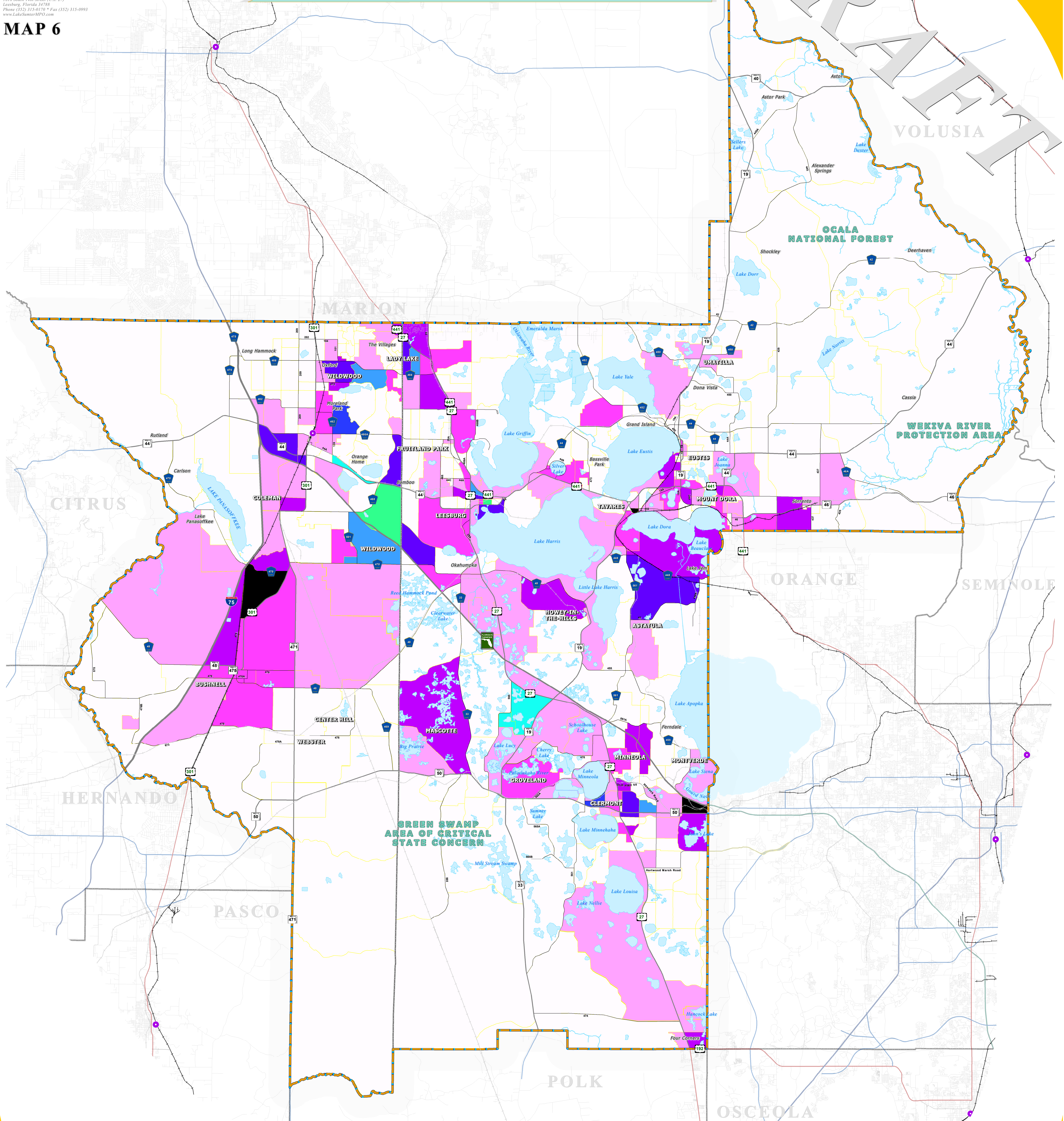
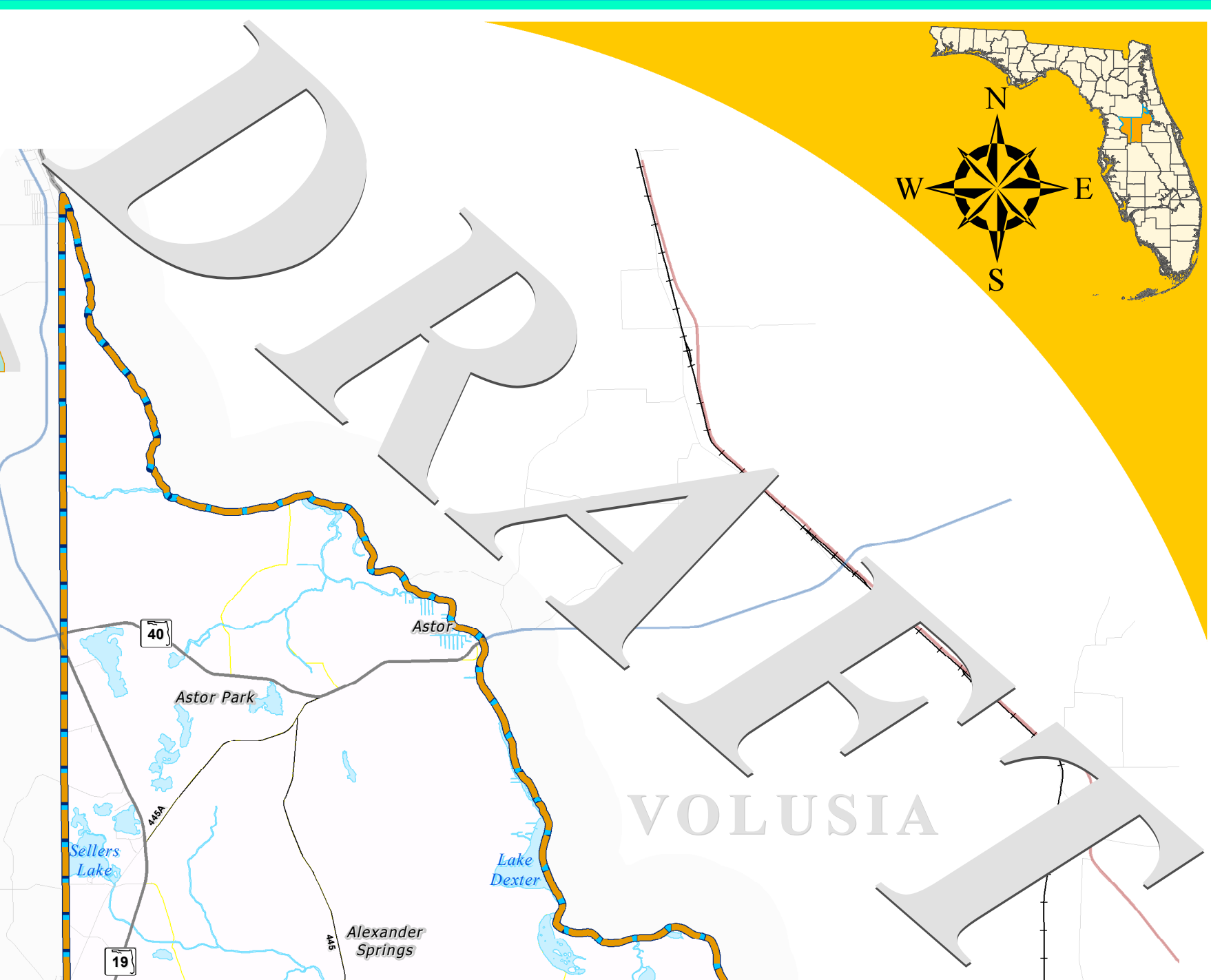




TOTAL EMPLOYMENT YEAR 2040



LEGEND

- Water Body
- County Delineation
- Lake-Sumter MPO Boundary

TRANSPORTATION NETWORK

- County Road
- State Road
- US Highway
- Interstate
- Turnpike
- Amtrak Station
- Active Railroad
- Abandoned Railroad

1 INCH EQUALS 2.25 MILES

**TOTAL EMPLOYMENT YR2040
PER TRAFFIC ANALYSIS ZONES (TAZ)**

0 - 500	1,501 - 2,000	3,001 - 3,500	4,491 - 7,000
500.1 - 1,000	2,001 - 2,500	3,501 - 4,000	
1,001 - 1,500	2,501 - 3,000	4,001 - 4,490	

**TRANSPORTATION
PLANNING AREA**

SUMTER AND LAKE COUNTY, FLORIDA

**Lake-Sumter
MPO**
Metropolitan
Planning Organization

DATA SOURCES:
 Lake and Sumter County GIS Department, Planning
 Public Lands Florida Managed Areas (PLMA)
 Florida Natural Areas Inventory (FNAI) Database
 Data Compilation and Map production compliments of the
 Lake-Sumter Metropolitan Planning Organization

This map product was prepared from Geographic Information System established by the Lake-Sumter Metropolitan Planning Organization and Lake County Board of County Commissioners. Its employees, agents and personnel, make no warranty as to its accuracy and in particular as to labeling, dimensions, contents, property boundaries, or placement or location of any map features thereon. The Lake-Sumter Metropolitan Planning Organization and Lake County Board of County Commissioners, its employees, agents and personnel MAKE NO WARRANTY OF MERCHANTABILITY OR WARRANTY FOR PURPOSES OF USE FOR A PARTICULAR PURPOSE EXPRESS OR IMPLIED WITH RESPECT TO THIS MAP PRODUCT. Independent verification of all data contained on this map product should be obtained by any user of this map.

MAP COMPOSITION:
OCTOBER, 2015