



Transportation Improvement Program

DRAFT

**for FISCAL YEARS
2019/20-2023/24**

**Scheduled for Approval
June 26, 2019**

**Prepared by the
Lake~Sumter Metropolitan Planning Organization
225 West Guava St. Suite 211
Lady Lake, FL 32159**

The preparation of this report was financed in part by the Federal Highway Administration, Federal Transit Administration, U.S. Department of Transportation and local participating governments. The views and opinions of the report do not necessarily reflect the official views or policy of the U.S. Department of Transportation.

Table of Contents

Executive Summary - Page 3
5 Year Summary by Fund Code - Page 24
Funding Source Summary - Page 44
Section 1 - Transportation Planning - Page 45
Section 2 - Roadway Capacity - Page 54
Section 3 - Operations and Management - Page 72
Section 4A - Safety - Resurfacing - Page 81
Section 4B - Safety - Lighting -Page 99
Section 4C - Safety - Guardrail - Page 106
Section 4D - Safety - Signing and Pavement Markings - Page 109
Section 5A - Maintenance Bridges - Page 111
Section 5B - Maintenance Drainage - Page 114
Section 5C - Maintenance Landscaping - Page 116
Section 5D - Maintenance - Routine Maintenance - Page 122
Section 5E - Maintenance - Miscellaneous - Page 139
Section 6 - Bicycle/Pedestrian & Trails - Page 141
Section 7 - Transit and Transportation Disadvantaged - Page 161
Section 9 - Airports - 170
Project Index - Page 187

THE TRANSPORTATION IMPROVEMENT PROGRAM

INTRODUCTION

The FY 2019/20 - 2023/24 Transportation Improvement Program (TIP) identifies transportation projects programmed for the Lake~Sumter MPO over the next five fiscal years. Consistent with Florida Department of Transportation (FDOT) requirements, this TIP lists all the federal and state funded transportation projects within the Metropolitan Planning Area for fiscal years 2019/20 through 2023/24. The TIP was developed in cooperation with FDOT and public transit operators in the county, who provide estimates of funds to develop financial plans.

PURPOSE

The TIP is a 5-year financially feasible program of multi-modal transportation improvement projects, as adopted by state and local government jurisdictions and transportation agencies. The Lake~Sumter MPO TIP is updated annually by the Metropolitan Planning Organization (MPO) as one of several prerequisites for continued receipt of federal assistance for transportation improvements.

The projects listed in the TIP are capital and noncapital surface transportation projects proposed for funding under Title 23 U.S.C.

and Title 49 U.S.C. Chapter 53 (including bicycle facilities, sidewalks, and transportation alternatives projects). Also included are all regionally significant projects requiring an action by the Federal Highway Administration (FHWA) or Federal Transit Administration (FTA) regardless of funding source. In addition, the TIP identifies major improvement projects funded with local sources.

USING THE TIP

The TIP includes all transportation improvements with federal and/or state funding during the FY 2019/20 - 2023/24 period. Projects in the TIP are grouped into one of the following sections:

- A. Transportation Planning/Studies
- B. Roadway Capacity Projects

- C. Traffic Operations, Maintenance, and Safety Projects
- D. Bicycle, Pedestrian, Trail, and Enhancement Projects
- E. Transit and Transportation Disadvantaged Projects
- F. Aviation Projects

FINANCIAL PLAN/FINANCIAL FEASIBILITY

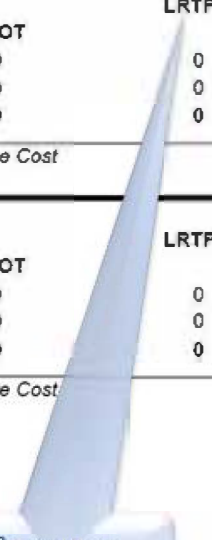
As structured, the TIP is financially constrained for each of the five years in the FY 2019/20 - 2023/24 period. All federal and state funded projects identified in the TIP are reflected in FDOT's Work Program for FY 2019/20 - 2023/24, and those projects can be funded using current and proposed revenue sources. The TIP is also financially constrained for all locally funded projects. For all projects in the TIP, costs and revenues are shown in Year of Expenditure dollars. Innovative financing techniques are used extensively in the development of projects in the Lake~Sumter MPO, primarily as a source of local matching funds for FDOT grant dollars. Examples include transit advertising revenue and impact fees. If reasonable additional funding sources are identified beyond those included in the financial plan, that additional funding would be used to advance the construction of MPO priority projects discussed below.

Insert MPO TIP Adoption Resolution

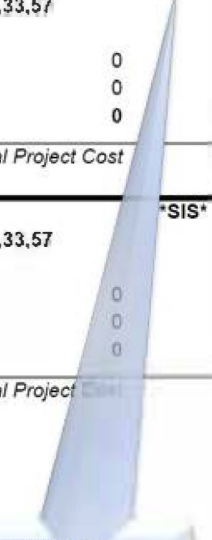
The LRTP reference on the TIP page provides the information necessary to locate the full project costs and/or additional details regarding the project in the LRTP (See example TIP page below). If there is no LRTP reference in the TIP, full project costs are provided in the TIP.

Lake Sumter Metropolitan Planning Organization Transportation Improvement Program - FY 2012/13 - 2016/17

Phase	Fund Source	2012/13	2013/14	2014/15	2015/16	2016/17	Total
4301321 - SR 35 (US 301) FROM FROM C-470 TO TO SR 44							*Non-SIS*
PD&E/EMO STUDY		Responsible Agency: FDOT			LRTP No: pg.11,17,18,19,20,6,32,33,57		
PD&E	DIH	10,000	20,000	0	0	0	30,000
PD&E	DDR	0	980,000	0	0	0	980,000
Total		10,000	1,000,000	0	0	0	1,010,000
<i>Prior Cost</i>		<i>Future Cost</i>		<i>Total Project Cost</i>			<i>1,010,000</i>
4301331 - SR 35 (US 301) FROM FROM N MAIN ST CR 48 TO TO C-470							*Non-SIS*
PD&E/EMO STUDY		Responsible Agency: FDOT			LRTP No: pg.11,17,18,19,20,26,32,33,57		
PD&E	DIH	10,000	20,000	0	0	0	30,000
PD&E	DDR	0	980,000	0	0	0	980,000
Total		10,000	1,000,000	0	0	0	1,010,000
<i>Prior Cost</i>		<i>Future Cost</i>		<i>Total Project Cost</i>			<i>1,010,000</i>
4301341 - SR 44 FROM FROM C-475 TO TO I-75							*SIS*
PD&E/EMO STUDY		Responsible Agency: FDOT			LRTP No: pg.11,17,18,19,20,26,32,33,57		
PD&E	DIH	10,000	20,000	0	0	0	30,000
PD&E	DDR	0	840,000	0	0	0	840,000
Total		10,000	860,000	0	0	0	870,000
<i>Prior Cost</i>		<i>Future Cost</i>		<i>Total Project Cost</i>			<i>870,000</i>



LRTP Reference



SIS Identifier

TIP FY 2012/13 - 2016/17 APPROVED JUNE 27, 2012 1-2 Transportation Planning

PROJECT SELECTION

The selection process for choosing projects incorporated within this TIP was carried out in accordance with the requirements of 23 USC 134(h) (2) and (i) (4). With reference to the projects included within this TIP, selection was made by FDOT in cooperation with the MPO in accordance with the requirements of 23 CFR 450.332(a).

To be included in the TIP, a project first must be identified in the MPO's Long Range Transportation Plan (LRTP). The MPO's 2040 LRTP was adopted in December 2015 and identifies the transportation improvements needed to accommodate the projected population growth through 2040. Of those transportation improvement needs, a cost-feasible plan was developed that identifies the projects that can be implemented based on the projected revenues for transportation improvements.

Each year, the MPO updates its Lists of Priority Projects, which identifies priorities for highway projects (SIS, non-SIS, and regional), transit projects, bicycle and pedestrian projects, and airport projects. For the Lake~Sumter MPO's FY 2019/20 - 2023/24 TIP, the project selection process started in May 2018. At that time, MPO staff, in conjunction with FDOT and local government officials, met to discuss MPO priorities. In May 2018, the MPO submitted its Lists of Priority Projects to FDOT.

Using the MPO's 2018 Lists of Priority Projects, FDOT developed its FY 2019/20 - 2023/24 Tentative Work Program. That five-year work program was presented to the MPO in December 2018 and constitutes the principal part of this TIP.

The FDOT shall give priority to those projects that are:

1. Designed to maximize safe and efficient travel;
2. Identified in approved local government comprehensive plans to receive local matching funds in accordance with the provisions of Section 335.20, F.S. or to be funded pursuant to the provisions of Section 339.12, F.S.;
3. Within transportation corridors protected by local government action;
4. Used in the operation of, or in conjunction with, public transportation facilities; and
5. Located within the boundaries of a local government which has made a responsible effort to fund improvements needed to accommodate local traffic.

CONSISTENCY WITH OTHER PLANS

All projects included in the Lake~Sumter MPO 2019/20-2023/24 TIP have been drawn from the *Transportation 2040*. The projects are consistent with the FDOT Five-Year Adopted Work Program and the Lake County Transit Development Plan (TDP).

PROJECT PRIORITY STATEMENT

The Lake~Sumter MPO adopted its List of Priority Projects (LOPP) in May 2018. The 2019 LOPP will be submitted to FDOT for use in developing the new outer year of the Five-Year Work Program, Fiscal Year 2023/24

IMPLEMENTED PROJECTS

FDOT produces an annual listing of projects for which federal funds have been obligated in the previous year. This list has been published and made available for public review through FDOT.

www.dot.state.fl.us/programdevelopmentoffice/federal/fa_mpo_obligdet.shtm

PUBLIC INVOLVEMENT

Annually, the Lake~Sumter MPO develops its TIP in accordance with all applicable State and Federal laws governing public involvement. This includes 23 CFR 450.316 and 23 CFR 450.324(b). Specific procedures for use of public involvement in the annual development of the TIP have been clearly defined in the MPO's recently adopted *Public Involvement Process (PIP)*. Prior to adoption of the final TIP, the Lake~Sumter MPO sought public comment on the draft TIP by making the document available on our website (LakeSumterMPO.com). In addition, all Lake~Sumter MPO meetings are held in accordance with Florida's open meetings law (the Sunshine Law), and an opportunity is provided for public comment. The draft TIP was on the agenda of the June 2019 Lake~Sumter MPO Governing Board meeting.

CERTIFICATION

The Lake~Sumter MPO participates in an annual self-certification of its planning process with representatives from the Florida Department of Transportation, District 5. The last annual self-certification with FDOT was completed April 2019.

TRANSIT and TRANSPORTATION DISADVANTAGED (TD)

The projects included in the TIP are consistent with adopted short and long range transportation plans and master plans of the agencies and jurisdictions in the Lake~Sumter area. The projects listed in this TIP are part of the MPO's 2040 Long Range Transportation Plan, Lake County 2017-27 Transit Development Plan, and Lake and Sumter County Transportation Disadvantaged

Service Plans. The plans and the projects identified in the TIP are also consistent, to the maximum extent feasible, with the adopted Comprehensive Plans of the local governments in the Lake~Sumter area.

EFFICIENT TRANSPORTATION DECISION MAKING (ETDM)

The MPO makes extensive use of ETDM throughout the planning process. All appropriate projects in the TIP were subject to ETDM planning and programming screening.

MANAGEMENT SYSTEMS

In accordance with state and federal regulations, FDOT has developed and implemented six management and monitoring systems for which it has jurisdiction. Those are:

- Pavement management system.
- Bridge management system.
- Highway safety management system.
- Public transportation management system.
- Intermodal management system.
- Traffic monitoring system for highways.

In addition, Florida statutes require that all MPOs develop and implement a Congestion Management Process (CMP). The MPO WILL utilize its CMP and the other management systems as appropriate to prepare its annual lists of priority projects and the TIP once completed in FY 2019/20.

AMENDMENTS

At times, the TIP may require changes that are necessitated by the addition of a new project to the Work Program that is not yet in the TIP, or changes due to monetary revisions to the State's Budget. Such changes are reflected in the TIP through amendments. Proposed amendments are generally presented to the public as part of the MPO's regularly advertised meetings. Copies of the proposed amendments are made part of the agenda package which is available for public review on the MPO's website. After approval by the MPO, amendments are attached at the end of the original TIP, and submitted to the State for inclusion in the STIP.

PERFORMANCE MEASUREMENT

Performance Management is a strategic approach to connect investment and policy decisions to help achieve performance goals. Performance measures are quantitative criteria used to evaluate progress against adopted performance targets.

The *Moving Ahead for Progress in the 21st Century Act (MAP-21)* requires State DOTs and MPOs to conduct performance-based planning by tracking performance measures and setting data-driven targets to improve those measures. Performance-based planning ensures the most efficient investment of federal transportation funds by increasing accountability, transparency, and providing for better investment decisions that focus on key outcomes related to seven national goals:

- Improving Safety;
- Maintaining Infrastructure Condition;
- Reducing Traffic Congestion;
- Improving the Efficiency of the System
- Improving Freight Movement;
- Protecting the Environment; and,
- Reducing Delays in Project Delivery.

The *Fixing America's Surface Transportation (FAST) Act* supplements the MAP-21 legislation by establishing timelines for State DOTs and MPOs to comply with the requirements of MAP-21. State DOTs are required to establish statewide targets, and MPOs have the option to support the statewide targets or adopt their own.

Safety Performance Measures

Safety is the first national goal identified in the FAST Act. In March of 2016, the *Highway Safety Improvement Program (HSIP) and Safety Performance Management Measures Rule (Safety PM Rule)* was finalized and published in the Federal Register. The rule requires MPOs to set targets for the following safety-related performance measures and report progress to the State DOT:

- Fatalities;
- Serious Injuries;
- Nonmotorized Fatalities and Serious Injuries;
- Rate of Fatalities per 100M Vehicle Miles Traveled (VMT); and
- Rate of Serious Injuries per 100M VMT.

The 2016 Florida Strategic Highway Safety Plan (SHSP) is the statewide plan focusing on how to accomplish the vision of eliminating 41 fatalities and reducing serious injuries on all public roads. The SHSP was developed in coordination with Florida's 27 metropolitan planning organizations (MPOs) through Florida's Metropolitan Planning Organization Advisory Council (MPOAC). The SHSP development process included review of safety-related goals, objectives, and strategies in MPO plans. The SHSP guides FDOT, MPOs, and other safety partners in addressing safety and defines a framework for implementation activities to be carried out throughout the State.

The Florida SHSP and the Florida Transportation Plan (FTP) both highlight the commitment to a vision of zero deaths. The FDOT Florida Highway Safety Improvement Program (HSIP) annual report documents the statewide performance measures toward that zero deaths vision. As such, the MPO supports the adoption of the FDOT statewide HSIP safety performance measures and FDOT's target of "0" for each safety performance measure to reflect the Department's goal of zero deaths.

FDOT, with the understanding that zero fatalities/serious injuries is unable to be achieved within the 2018 Highway safety Plan (HSP), developed statistical data models to forecast the number of fatalities and serious injuries. Based on the forecasts of these statistical models, FDOT established targets and programmed projects that they expect will reduce the number of fatalities and serious injuries. The five federally-mandated Safety Performance Measures targets for 2019 for FDOT and the Lake~Sumter MPO are presented below in Table below.

Safety Performance Measure targets are required to be adopted on a yearly basis. In August of the current year, FDOT will report the following year's targets in the HSIP Annual Report to the Federal Highway Administration. After FDOT adopts the targets, the MPO is required to either adopt FDOT's targets or establish its own within six months (or the following February).

Safety Performance Measure	FDOT Statewide Targets	Lake Sumter MPO Safety Targets	Safety
Number of Serious Injuries		0	0
Rate of Fatalities per 100 Million Vehicle Miles Traveled (VMT)		0	0
Rate of Serious Injuries per 100 Million Vehicle Miles Traveled (VMT)		0	0
Total Number of Non-motorized Fatalities and Non-motorized Serious Injuries		0	0

Contained in the TIP are strategic projects aimed at implementing the directives and achieving the goals and objectives of the MPO's 2040 Long-Range Transportation Plan (LRTP). Providing a Safe and Secure Transportation System for all users is one of 5 Major Goals of the LRTP, and "minimize crashes and fatalities for all modes of transportation" are among the policies contained in the plan. Safety Funding is allocated by FDOT and is specifically identified in the LRTP, and the discussion of safety on page 23 of the LRTP notes that safety will be enhanced in a number of direct and indirect ways. These include implementing stand-alone safety projects; providing congestion relief which leads to fewer crashes; prioritizing projects with an identified safety benefits; and incorporating the

latest design standards and Complete Streets Concepts into the plan's capacity and maintenance projects.

Collectively, the projects in the TIP serve the Goals of the LRTP and enhance safety in the transportation system, helping the MPO meet its performance measures. Some of the more notable individual safety projects include:

- SR 46 FM# 2382752 Constructing a new 4 lane roadway, with bike lanes and sidewalks
- Wekiva Parkway FM# 2382757 Constructing a 4 lane expressway
- US 441 FM# 2383955 Constructing a new 6 lane roadway with bike lanes and sidewalks
- Florida Turnpike FM# 4402942 Installing Guardrail on the Turnpike
- CR 473 Adding paved shoulders to the existing roadway
- Florida Turnpike FM# 4061103 Improving signing Pavement Marking on the Turnpike
- CR 478 FM# 4344031 Widening and Resurfacing existing roadway

Bridge, Pavement, and System Performance Measures

The second of the performance measures rules issued by Federal Highway Administration (FHWA) became effective on May 20, 2017, establishing measures to assess pavement and bridge condition on the National Highway System (NHS). Requirements involve measuring the condition of these facilities and reporting conditions that are considered “Good” and those considered “Poor.” Facilities rated as Good suggest that no major investments are needed. Facilities rated as Poor indicate major investments will be needed in the near term.

FDOT has the capability to collect and maintain data regarding bridge and pavement condition. In October 2018, the MPO adopted pavement and bridge condition performance targets in support of the measures and targets set by FDOT (see Table below).

Bridge, Pavement, and System Performance Measures

	Florida 2 year Targets 1/1/2018 to 12/31/2019	Florida 4 year Targets 1/1/2018 to 12/31/2021
Percent of Interstate NHS Pavement in Poor Condition	Not required	≤5%
Percent of Non-Interstate NHS Pavement in Good Condition	≥40%	≥40%
Percent of Non-Interstate NHS Pavement in Poor Condition	≤5%	≤5%
Percent of NHS Bridges by Deck Area in Good Condition	≥50%	≥50%
Percent of NHS Bridges by Deck Area in Poor Condition	≤10%	≤10%

The third of the three performance measures rules issued by Federal Highway Administration (FHWA) became effective on May 20, 2017, establishing measures to assess the performance of the National Highway System (NHS), freight movement on the Interstate System, and Congestion Mitigation and Air Quality Improvement Program (CMAQ). While the Air Quality programs do not apply to the Lake~Sumter MPO planning area, the performance measures travel time reliability for interstate, non-interstate NHS and travel time reliability for freight are applicable and consistent with the MPO’s process for establishing project priorities. In October 2018, the MPO adopted system performance targets in support of the measures and targets set by FDOT (see Table below).

	Florida 2 year Targets 1/1/2018 to 12/31/2019	Florida 4 year Targets 1/1/2018 to 12/31/2021
Percent of Person-Miles on the Non-Interstate NHS that are Reliable	Not required	50%
	1.75	

**System
Targets**

Performance

In addition to identifying the procedures for inventorying and rating the condition of pavement and bridges in the state, the Florida Transportation Asset Management Plan also sets forth the following overarching asset management objectives:

- Achieve and maintain a state of good repair for transportation assets;
- Reduce the vulnerability and increase the resilience of critical infrastructure to the impacts of extreme weather and events; and
- Minimize damage to infrastructure from transportation vehicles.

Investing in Transportation to support a prosperous, competitive regional economy, is one of 5 Major Goals of the 2040 LRTP. In addition, the LRTP sets forth numerous objectives and policies that promote infrastructure condition and system reliability.

Collectively, the projects in the TIP serve the Goals of the LRTP and enhance infrastructure condition and system reliability in the transportation system, helping the MPO meet its performance measures. Some of the more notable individual projects enhancing infrastructure condition and system reliability include:

- US 27 FM# 4373271 Resurfacing project
- SR 44 FM# 4373481 Resurfacing project
- SR 19 FM# 4402941 Resurfacing project
- SR 10 Little Lake Harris Bridge FM# 4295561 Replacing an obsolete Bridge
- SR 33 Bridge Replacement FM# 4338601

Transit Asset Performance Measures

With the adoption of MAP-21, MPOs are now required to establish performance targets for the management of transit assets. On September 12, 2018, the Lake~Sumter MPO adopted the transit asset targets shown in Table below for the MPO's planning area. The Table below shows the percentage of LakeXpress's assets (by count) that have met or exceeded their ULB for each asset class in 2018 and their performance targets for the next four years. The vehicle targets are based on the vehicle replacement plan from the 2019 TDP.

Transit Asset State of Good Repair Performance and Target 2019-2022

Asset Class	2018 Performance	2019 Target	2020 Target	2021 Target	2022 Target
<i>Rolling Stock</i>					
Buses	31%	19%	31%	31%	0%
Cutaways	23%	6%	61%	61%	48%
Minivans	0%	0%	0%	100%	0%
Vans	60%	0%	0%	0%	40%
<i>Equipment</i>					
Non-Revenue Vehicles	43%	0%	0%	0%	0%
<i>Facilities</i>					
Administrative Office	0%	0%	0%	0%	0%

As previously noted, FTA-defined SGR performance measure for equipment assets applies only to non-revenue service

The table below summarizes the required performance targets for transit facilities as well as the current status of each performance measure. Transit facilities are rated using the Transit Economic Requirements Model (TERM) Scale. The TERM scale has a range of 1 to 5, with 5 representing facilities in the best condition. A TERM rating of 3.0 represents a facility in adequate condition. Each facility is assigned a rating based on its condition.

Performance Measures for Transit Facilities

Asset Category	Asset Class	Individual Assets	Condition Assessment TERM Rating	FY 19 Target (% Under TERM 3.0)	Current Status
Facilities	Administrative/ Maintenance	Transit Administration	3.39	0%	0%

The Lake~Sumter MPO TIP was developed and is managed in cooperation with the Lake County Board of County Commissioners, which operates Lake County's public transportation system and the Sumter County Board of County Commissioners, which operates Sumter County transit system. It reflects the investment priorities established in the 2040 LRTP. Transit asset condition and state of good repair is a consideration the MPO uses to select projects for inclusion in the TIP. The MPO's goal of improving transit asset condition is linked to this investment plan, and the process used to prioritize the projects within the TIP is consistent with federal requirements.

Improving Mobility Options and Connectivity for People and Goods, is one of 5 Major Goals of the 2040 LRTP. To this end, the LRTP identifies numerous objectives and policies that promote alternative modes of mobility, including that capital and operational improvements be consistent with Lake County's Transit Development Plan (TDP). By October 1, 2018, transit agencies were required to adopt Transit Asset Management (TAM) plans. In Lake County, the TAM plan is required to include an inventory of assets, a condition assessment of inventoried assets, a description of decision support tools, and a prioritized list of investments. By following the Transit Asset Management plan, agencies can maintain transit systems in a state of good repair. The MPO transit asset performance targets identified above are consistent with Lake County's TAM plan.

Based on the information used to develop the TIP, the Lake~Sumter MPO anticipates that this TIP, once implemented, will contribute to progress toward achieving the MPO's transit asset performance targets. Improving the State of Good Repair (SGR) of capital assets is an overarching goal of this process.

Freight Performance and Plan Consistency

The projects in the TIP address the Goals, Objectives, and Policies as well as specific strategic capacity and safety deficiencies identified in the Florida Freight Mobility and Trade Plan (FMTP). By providing Lake~Sumter MPO with the Wekiva Parkway Project, this serves multiple objectives, including Objective 2 of the FMTP (Increase operational efficiency of goods movement). The projects will also eliminate the Statewide SIS Bottleneck on the Florida Turnpike and US 27 identified in the FMTP.

GLOSSARY OF TERMS AND ABBREVIATIONS

- **Access Management** – The regulation and control of vehicular access to public roads to insure the safe and efficient operation of the roadway system.
- **Advanced Traffic Management Systems (ATMS)** – This is an intelligent transportation system (ITS) approach using advanced technology tools such as closed-circuit television cameras, radar detectors and communication devices to monitor traffic, optimize signal timing and control traffic flow.
- **Americans with Disabilities Act (ADA)** – A federal law that requires public facilities and services to be accessible to persons with disabilities, including those with mental disabilities, temporary disabilities and conditions related to substance abuse.
- **Average Daily Traffic (ADT)** – The number of vehicles passing a fixed point in a day, averaged over a number of days. The number of count days included in the average varies with the intended use of the data.
- **Bicycle Facilities** – Any travel corridor designed to accommodate non-motorized traffic, including bike and pedestrian paths and bike lanes on roadways.
- **Bridges Management System (BMS)** – Process for analyzing existing conditions and identifying future needs with respect to bridges designated as part of the National Highway System
- **Capital Improvements Element (CIE)** – A required element of local comprehensive plans which evaluates the need for public facilities and associated costs and construction schedules. The required content of CIEs is stipulated in Rule 9J-5.016 of the Florida Administrative Code and Chapter 163.3177(3), Florida Statutes.
- **Capital Improvement Program (CIP)** – A five/six year schedule of capital improvements adopted by local governments and transportation agencies.
- **Chapter 163, Florida Statutes (F.S.)** – Requires local governments to develop comprehensive plans assessing existing and future public service and facility needs and identifies policies and capital improvement projects necessary to address them.
- **Community Advisory Committee (CAC)** – Private citizens representing municipal area and at-large membership appointed by the MPO to review transportation issues and topics that will be considered by the MPO. The CAC forwards recommendations to the MPO regarding these issues and topics.

- **Community Traffic Safety Teams (CTST)** – Community Traffic Safety Teams are locally based groups of highway safety advocates who are committed to solving traffic safety problems through a comprehensive, multi-jurisdictional, multi-disciplinary approach. Members include local city, county, state, and occasionally federal agencies, as well as private industry representatives and local citizens.
- **Community Transportation Coordinator (CTC)** – Agency responsible for delivering coordinated transportation services to the transportation disadvantaged population in the designated service area.
- **Concurrency Management System (CMS)** – The process local governments use to ensure that level of service standards on public services and facilities are adopted and maintained. In addition, CMS' require that public services and facilities necessary to accommodate the impacts of development projects are in place prior to their approval.
- **Congestion Management Process (CMP)** – A federally mandated program within metropolitan planning areas to address and manage congestion through the implementation of strategies not calling for major capital investments. The CMP was formerly known as **Congestion Management System (CMS)**.
- **Designated Official Planning Agency (DOPA)** – Agency designated by the state Commission for the Transportation Disadvantaged to provide planning services to the local transportation disadvantaged service area. The MPO is the DOPA.
- **Disadvantaged Business Enterprise (DBE)** – Businesses owned and operated by members of one or more socially and economically disadvantaged minority groups, such as African Americans, Hispanic Americans, Native Americans, Asian Pacific Americans and Asian Indian Americans.
- **Efficient Transportation Decision Making (ETDM)** – A FDOT initiative to improve and streamline the environmental review and permitting process of transportation projects by providing resource protection agencies and concerned citizens opportunities to comment on them during the initial planning phase. This is intended to improve the coordination of transportation decisions with social, land use and ecosystem preservation concerns.
- **Federal Highway Administration (FHWA)** – The federal agency that develops regulations, policies and guidelines to achieve safety, economic development, and other goals of FHWA programs through the construction and improvement of the nation's transportation infrastructure and highway system.
- **Federal Highway Administration (FHWA) Metropolitan Planning (PL) Funds** – Primary source of planning funds allocated to the MPO and budgeted in the Unified Planning Work Program (UPWP) in accordance with 23 U.S.C., Section 134.
- **Federal Transit Administration (FTA)** – The agency that develops policy on public transit issues and allocates capital and operating funds for public transit projects.
- **Federal Transit Administration (FTA) Section 5303** – Source of transit planning funds.

- **Fiscal Year (FY)** – Defines budget year; runs from July 1 through June 30 for the state of Florida and from October 1 through September 30 for federal and local governments.
- **Florida Administrative Code (FAC)** – A compilation of the rules and regulations of state agencies that have been filed with the Department of State pursuant to the provisions of Chapter 120, F.S.
- **Florida Department of Transportation (FDOT)** – FDOT is a decentralized agency responsible for the development, maintenance, and regulation of public transportation systems and facilities in the state.
- **Florida Intrastate Highway System (FIHS)** – A statewide network of limited and controlled access highways primarily intended for high speed and high volume traffic movements constructed and maintained by FDOT.
- **Florida Standard Urban Transportation Modeling Structure (FSUTMS)** – Computer model used in Florida for transportation planning to simulate existing and future travel patterns developed by FDOT for long-range urban area transportation modeling.
- **Functional Classification** – The process by which streets and highways are grouped into classes, or systems, according to the character of service they are intended to provide. Local governments are required to identify the functional classification of roadways within their jurisdiction in their comprehensive plans.
- **Institute of Transportation Engineers (ITE)** – An international society of professionals in transportation and traffic engineering. The organization publishes the Trip Generation Manual, which provides trip generation data.
- **Intelligent Transportation Systems (ITS)** – An umbrella term for a range of advanced technologies that monitor and manage traffic flow, reduce congestion, provide alternate routes to travelers, enhance productivity, respond to incidents, adverse weather or other road capacity constricting events.
- **Intermodal Facilities** – Transportation facilities that different travel modes, such as rail or bus stations at airports.
- **Joint Participation Agreement (JPA)** – Legal instrument describing intergovernmental tasks to be accomplished and/or funds to be paid between government agencies.
- **Level of Service (LOS)** – A qualitative assessment of operating conditions for transportation facilities using the letter grades A through F (best to worst), to describe their performance.
- **Livable Communities** – A planning concept that applies to initiatives and programs directed at improving and/or maintaining an urban environment that promotes walking, bicycling and transit use and that provides a sense of place and opportunities for employment, education, recreation, entertainment and shopping.
- **Local Coordinating Board (LCB)** – A board comprised of representatives of the MPO Board, social service agencies, private transportation providers, FDOT and citizens. The LCB is responsible for governing the Transportation Disadvantaged Program.

- **Moving Ahead for Progress in the 21st Century Act (MAP-21)** – The 2012 federal surface transportation legislation (Public Law 112-141) that authorizes federal-aid highway and transit programs. MAP-21 sets forth funding and associated requirements for the MPOs and transportation improvement projects.
- **MPO Long Range Transportation Plan (LRTP)** – Federally required plan that assesses existing and future transportation needs in the MPO planning area and identifies strategies, capital improvements and associated funding needed to address them. The LRTP addresses all principal modes of travel including the automobile, bicycle, airplane, and transit and walking.
- **MPO Public Participation Plan (PIP)** – Sets forth strategies for generating meaningful public involvement in the course of preparing, developing and implementing MPO plans, programs and projects.
- **National Highway System (NHS)** – Includes the interstate system and other routes identified as having strategic defense characteristics as well as routes providing access to major ports, airports, public transportation, intermodal transportation facilities and routes of particular importance to local governments.
- **Pavement Management System (PMS)** – A systematic process utilized by state agencies and MPOs to analyze and summarize pavement information for use in selecting and implementing cost effective pavement construction, rehabilitation and maintenance programs. It is required for roads in the National Highway System.
- **SRTS – Safe Routes to School Program** - The SRTS Program helps communities address school transportation needs while encouraging more students to walk or bicycle to school. The SRTS Program funds projects such as the construction and installation of sidewalks, shared-use paths, etc.
- **State Transportation Improvement Plan (STIP)** – A staged, multi-year, statewide, intermodal program that is consistent with the state and MPO transportation plans and TIPs. It must be approved by the Federal Highway Administration and the Federal Transit Administration at least every two years.
- **Strategic Intermodal System (SIS)** – The SIS is a statewide network of high-priority transportation facilities, including the state's largest and most significant commercial service airports, spaceport, Deepwater seaports, freight rail terminals, passenger rail and intercity bus terminals, rail corridors, waterways and highways. These facilities are recognized as having the top priority for state and federal funding.
- **Surface Transportation Program (STP)** – A funding program under SAFETEA-LU that provides monies for federal-aid road improvements. SAFETEA-LU will expire on October 1, 2012, and Moving Ahead for Progress in the 21st Century Act (MAP-21) that took effect on October 1, 2012.
- **Transportation Alternatives Program (TAP)** – Allows for up to two percent of Surface Transportation Program funds to be allocated for non-roadway improvements/expenditures, including pedestrian/bicycle facilities, Recreational Trails and Safe Routes to Schools programs.

- **Transit Development Plan (TDP)** – Transit providers ten-year planning, development and operational guidance document required for Florida Public Transit Block Grant funding. The TDP is used in creating the mass transit elements of the MPO Long Range Transportation Plan, TIP and FDOT Work Program.
- **Transportation Demand Management (TDM)** – Employs techniques, such as vanpooling, increasing transit use and telecommuting, to reduce the demand for single occupant vehicle travel and vehicle-miles traveled.
- **Transportation Disadvantaged (TD)** – Those persons who, because of physical or mental disability, income status or age are unable to transport themselves or to purchase transportation and are, therefore, dependent on others to obtain access to health care, employment, education, shopping, social activities or other life-sustaining activities. These persons also include children who are handicapped or high-risk or at risk as defined in Ch. 411, F.S.
- **Transportation Disadvantaged Service Plan (TDSP)** – A three-year implementation plan, with annual updates developed by the designated official planning agency (DOPA) in coordination with the community transportation coordinator. The TDSP contains the provisions of service delivery for the County's Transportation Disadvantaged Program and is reviewed and approved by the Local Coordinating Board.
- **Transportation Impact Fee (TIF)** – Exaction assessed by local governments on new development projects that attempt to recover the cost incurred to provide transportation facilities required to serve the new development.
- **Transportation Improvement Program (TIP)** – A five-year program of transportation improvements adopted annually by the MPO that incorporates State and federal work programs along with the capital improvement programs/elements of local governments and the transit agency within the MPO's jurisdiction.
- **Transportation Regional Incentive Program (TRIP)** – A Florida program that provides state funds to improve regionally significant transportation facilities.
- **Transportation System Management (TSM)** – A program involving the implementation of traffic control measures, such as high occupancy vehicle (HOV) lanes, signal timing adjustments, median closings and access management strategies to increase the operating efficiency of the traffic circulation system.
- **Unified Planning Work Program (UPWP)** – Identifies all transportation planning activities under the auspices of the MPO that are to receive federal and state grant funds.
- **United States Code (USC)** – Also referred to as the Code of Federal Requirements, this is the codification of the general and permanent rules published in the Federal Register by the executive departments and agencies of the Federal Government.
- **Work Program (WP)** – The five-year listing of all transportation projects scheduled by the Florida Department of Transportation.

ABBREVIATIONS

- **BRDG** Bridge
- **CTC** Community Transportation Coordinator
- **CTD** Commission for the Transportation Disadvantaged
- **CIP** Capital Improvements Program
- **DBE** Disadvantaged Business Enterprise
- **FAA** Federal Aviation Administration
- **FAST Act** Fixing America's Surface Transportation Act of 2015 FDOT Florida Department of Transportation
- **FHWA** Federal Highway Administration FM Financial Management
- **FTA** Federal Transit Administration
- **IJR** Interchange Justification Report
- **LAR** Local Agency Reimbursement
- **LCB** Local Coordinating Board
- **LRTP** Long Range Transportation Plan
- **MPO** Metropolitan Planning Organization
- **PST DES** Post Design
- **PIP** Public Involvement Plan
- **PTO** Public Transportation Office RELOC Right of Way Relocation ROW Right of Way
- **SRA** Senior Resource Association, Inc.
- **TD** Transportation Disadvantaged
- **TDCB** Transportation Disadvantaged Coordinating Board
- **TIP** Transportation Improvement Program

PHASES

- **ADM** Administration
- **CAP** Capital Purchase
- **CEI** Construction, Engineering, & Inspection
- **CST** Construction
- **DSB** Design Build
- **ENV** Environmental
- **MNT** Maintenance
- **OPS** Operations

- **PD&E** Project Development and Environmental
- **PE** Preliminary Engineering
- **PLN** Planning
- **RRU** Railroad/Utilities Construction

FUND CODES

- **ACBR** Advance Construction Bridge Replacement
- **ACER** Advance Construction Emergency Repair
- **ACFP** Advance Construction Freight Program
- **ACNP** Advance Construction Bridge Replacement (MAP-21)
- **ACSA** Advance Construction Surface Transportation Program – Any Area (Federal)
- **ACSL** Advance Construction Surface Transp. Program –Areas Less Than 200K Pop.
- **ACSN** Advance Construction Surface Transportation Program – Areas Less Than 5K Pop.
- **ACTL** Advance Construction Transportation Alternatives Areas Less Than 200K Pop.
- **CIGP** County Incentive Grant Program
- **CM** Congestion Mitigation
- **D** Unrestricted State Primary
- **DDR** District Dedicated Revenue (State)
- **DFC** Developer Funded Contribution
- **DIH** District In-House Product Support (State)
- **DITS** Statewide Intelligent Transportation System
- **DPTO** State Public Transportation Office
- **DS** State Primary Highways and Public Transit
- **DU** State Primary Funds/Federal Reimbursement
- **FAA** Federal Aviation Administration
- **FTA** Federal Transit Administration
- **GRSC** Growth Management for SCOP
- **LF** Local Funds
- **PKYI** Turnpike Improvement
- **PKYR** Turnpike Renewal & Replacement
- **PL** Metropolitan Planning Funds
- **SA** Surface Transportation Program – Any Area (Federal)
- **SCED** Small County Outreach Program (2012 Senate Bill 1998)
- **SCOP** Small County Outreach Program
- **SCWR** Small County Outreach Program (2015 Senate Bill 2514A)

- **SL** Surface Transportation Program – Areas Less Than 200K Pop.
- **SN** Surface Transportation Program – Areas Less Than 5K Pop.
- **TALL** Transportation Alternatives – Areas Less Than 200K Pop.
- **TALN** Transportation Alternatives – Areas Less Than 5K Pop.
- **TALT** Transportation Alternatives – Any Area
- **TRIP** Transportation Regional Incentive Program
- **TRWR** Transportation Regional Incentive Program (2015 Senate Bill 2514A)

5-Year Summary of Projects by Funding Category

Project #	Project Name	2019/20	2020/21	2021/22	2022/23	2023/24	Total
ACBR - ADVANCE CONSTRUCTION (BRT)							
4295561	SR 44 BRIDGE# 110063	30,284,651	357,850	317,130	0	0	32,399,631
Total		30,284,651	357,850	317,130	0	0	32,399,631
ACCM - ADVANCE CONSTRUCTION (CM)							
2383955	SR 500 (US 441)	3,374,806	0	0	0	0	3,374,806
Total		3,374,806	0	0	0	0	3,374,806
ACLD - ADV CONSTRUCTION SAFETY (HSLD)							
4413701	SR 19	0	0	0	0	0	207,674
Total		0	0	0	0	0	207,674
ACNP - ADVANCE CONSTRUCTION NHPP							
2382757	SR 429/46 (WEKIVA PKWY)	0	0	0	0	0	143,933
Total		0	0	0	0	0	143,933
ACSA - ADVANCE CONSTRUCTION (SA)							
2382758	CR 46A REALIGNMENT	0	0	0	0	0	368,747
2383955	SR 500 (US 441)	4,633,689	0	0	0	0	4,633,689
4358931	SOUTH LAKE TRAIL - PHASE 4	0	0	0	0	0	8,272
Total		4,633,689	0	0	0	0	5,010,708
ACSB - ADVANCE CONSTRUCTION (SABR)							
4295561	SR 44 BRIDGE# 110063	0	0	0	0	0	1,663,823
Total		0	0	0	0	0	1,663,823
ACSL - ADVANCE CONSTRUCTION (SL)							
2382758	CR 46A REALIGNMENT	0	0	0	0	0	1
2383955	SR 500 (US 441)	6,668,286	0	0	0	0	6,668,286
4301321	SR 35 (US 301)	0	0	0	0	0	30,454
Total		6,668,286	0	0	0	0	6,698,741

5-Year Summary of Projects by Funding Category

Project #	Project Name	2019/20	2020/21	2021/22	2022/23	2023/24	Total
ACSN - ADVANCE CONSTRUCTION (SN)							
2382758	CR 46A REALIGNMENT	0	0	0	0	0	41,203
4301321	SR 35 (US 301)	0	0	0	0	0	85,544
4309755	LAKE-WEKIVA TRAIL	167,696	0	0	0	0	167,696
4358931	SOUTH LAKE TRAIL - PHASE 4	0	0	0	0	0	179,163
4371145	CR 46A	10,260	0	0	0	0	98,423
Total		177,956	0	0	0	0	572,029
ACSS - ADVANCE CONSTRUCTION (SS)							
4394151	CITRUS TOWER BOULEVARD	246,538	0	0	0	0	246,538
4397011	LAKESHORE DRIVE	502,599	0	0	0	0	502,599
4397021	LAKE LOUISA ROAD	343,379	0	0	0	0	343,379
4399121	CR 478	992,377	0	0	0	0	992,377
4413642	CR 42	0	1,669,223	0	0	0	1,669,223
4413701	SR 19	0	754,758	0	0	0	942,764
4435071	SR 44 SOUTH OF LAKESHORE BLVD TO NORTH OF	305,000	0	903,073	0	0	1,208,073
4435081	LAKE ELLA ROAD FROM NE 90TH ST TO SR 25 / SR	135,000	0	409,180	0	0	544,180
4435101	SR 19 FROM BURRELL RD TO MEBANE ST	755,000	0	3,548,528	0	0	4,303,528
4435111	CR 452 FROM CR 44 TO LAKE / MARION COUNTY	605,000	0	2,232,000	0	0	2,837,000
4435461	US 441 FROM GRIFFIN RD TO MLK BLVD	705,000	0	5,907,534	0	0	6,612,534
Total		4,589,893	2,423,981	13,000,315	0	0	20,202,195
ACTN - ADVANCE CONSTRUCTION TALN							
4309753	LAKE-WEKIVA TRAIL FROM SR 46 TO HOJIN	0	0	0	0	0	156,574
Total		0	0	0	0	0	156,574
BRP - STATE BRIDGE REPLACEMENT							
4295561	SR 44 BRIDGE# 110063	0	0	0	0	0	1,894,658

5-Year Summary of Projects by Funding Category

Project #	Project Name	2019/20	2020/21	2021/22	2022/23	2023/24	Total
BRP - STATE BRIDGE REPLACEMENT							
Total		0	0	0	0	0	1,894,658
CIGP - COUNTY INCENTIVE GRANT PROGRAM							
4354931	WEST STREET	98,500	0	0	0	0	98,500
4363651	ITS ARCHITECTURE STUDY	300,000	0	0	0	0	400,000
Total		398,500	0	0	0	0	498,500
CM - CONGESTION MITIGATION - AQ							
2382752	SR 46 / US 441	0	0	0	0	0	2,623,603
2383955	SR 500 (US 441)	466,649	0	0	0	0	466,649
Total		466,649	0	0	0	0	3,090,252
D - UNRESTRICTED STATE PRIMARY							
2383193	LEESBURG-LAKE HARRIS REGIONAL POND	1,200,000	0	0	0	0	1,200,000
2447543	VEGETATION AND	1,924,523	1,924,523	1,924,523	1,924,523	1,443,392	21,582,937
4136151	LIGHTING AGREEMENTS	346,139	356,522	367,215	378,228	389,572	2,815,555
4136152	LIGHTING AGREEMENTS	37,761	38,894	40,061	41,263	42,500	306,812
4171991	LADY LAKE	21,505	21,505	21,505	21,505	21,505	447,464
4181061	LAKE PRIMARY	1,704,791	1,763,811	1,763,811	1,763,811	1,733,811	43,571,596
4181111	SUMTER PRIMARY	354,283	361,211	361,211	361,211	361,211	5,063,236
4231131	CITY OF LEESBURG MOA	132,056	132,056	132,056	132,056	132,056	767,467
4237901	MOA W/ MASCOTTE	7,520	7,520	7,520	7,520	7,520	75,537
4254581	MOA W/ TAVARES	33,057	33,057	33,057	33,057	33,057	200,676
4271941	MOA W/WILDWOOD	13,441	13,441	13,441	13,441	13,441	153,024
4291571	ASPHALT REPAIR	307,400	0	0	0	0	5,763,999
4291762	DRAINAGE REPAIR	1,219,835	0	0	0	0	4,310,943
4425711	LEESBURG OPERATIONS COMPLEX CONTRACTED	3,000	0	0	0	0	60,374

5-Year Summary of Projects by Funding Category

Project #	Project Name	2019/20	2020/21	2021/22	2022/23	2023/24	Total
D - UNRESTRICTED STATE PRIMARY							
4439991	SHOULDER AND/OR DITCH REPAIRS	750,000	0	0	0	0	750,000
Total		8,055,311	4,652,540	4,664,400	4,676,615	4,178,065	87,069,620
DDR - DISTRICT DEDICATED REVENUE							
2382752	SR 46 / US 441	72,380	0	0	0	0	6,782,918
2382753	SR 46	34,654	0	0	0	0	1,035,148
2382757	SR 429/46 (WEKIVA PKWY)	180,952	0	0	0	0	2,251,665
2382758	CR 46A REALIGNMENT	0	0	0	0	0	128,151
2383955	SR 500 (US 441)	1,688,748	0	0	0	0	18,259,198
4130193	TRAFFIC ENGINEERING CONTRACTS	307,605	0	0	0	0	3,674,084
4130198	TRAFFIC ENGINEERING CONTRACTS	62,253	0	0	0	0	728,543
4136151	LIGHTING AGREEMENTS	0	0	0	0	0	2,226,628
4136152	LIGHTING AGREEMENTS	0	0	0	0	0	292,614
4225703	SOUTH LAKE TRAIL PH IIIB	0	0	83,000	0	0	2,188,439
4293561	SR 500 (US 441)	320,000	1,240,000	525,000	125,953	0	2,210,953
4295561	SR 44 BRIDGE# 110063	669,271	0	0	0	0	669,271
4301321	SR 35 (US 301)	0	0	4,821,639	0	0	5,671,423
4316201	LAKE-UMATILLA	0	600,000	0	0	0	600,000
4316241	LAKE-UMATILLA	0	0	40,000	0	0	103,400
4316251	LAKE-UMATILLA	0	0	400,000	0	0	400,000
4353162	LAKE-UMATILLA MUNI EXTEND RUNWAY 1-19	0	12,000	120,000	0	0	132,000
4354712	SOUTH SUMTER TRAIL- SR 471	0	0	0	36,443	0	36,443
4358593	SR 50	5,150,000	0	0	0	0	8,478,679
4358594	SR 50	5,400,000	0	0	0	0	12,400,000
4358595	SR 50	524,000	0	0	0	0	5,422,801

5-Year Summary of Projects by Funding Category

Project #	Project Name	2019/20	2020/21	2021/22	2022/23	2023/24	Total
DDR - DISTRICT DEDICATED REVENUE							
4358931	SOUTH LAKE TRAIL - PHASE 4	120,000	0	15,146,132	0	0	15,796,132
4358932	SOUTH LAKE-SUMTER TRAIL PHASE IV FROM VAN	0	30,000	25,000	108,000	0	163,000
4358933	SOUTH LAKE-SUMTER TRAIL PHASE IV	0	275,000	290,000	270,000	0	835,000
4363651	ITS ARCHITECTURE STUDY	0	0	0	0	0	200,000
4371141	SR 46	0	275,306	0	0	0	290,306
4371142	SR 46	0	890,506	0	0	0	919,051
4371146	SR 46/SR 429	25,000	0	36,897	0	0	61,897
4373291	SR 44	1,489,253	0	0	0	0	1,489,253
4379381	SR 19/S CENTRAL AVE	2,258,949	0	0	0	0	2,258,949
4384471	LAKE-LEESBURG INTL	0	0	87,500	0	0	87,500
4384491	LAKE-LEESBURG INTL	0	0	500,000	0	0	500,000
4385622	I-75 (SR 93) SUMTER CO REST AREA	0	0	0	0	0	125,000
4391381	SR 19 (BAY STREET)	3,534,996	0	0	0	0	3,534,996
4391391	SR 25	1,476,230	0	0	0	0	1,999,968
4391421	SR 44 FROM EAST OF BRITT ROAD TO EAST OF	0	0	3,462,053	0	0	4,232,053
4407751	LAKE-LEESBURG INTL	360,000	0	0	0	0	720,000
4407761	LAKE-LEESBURG INTL	83,200	500,000	0	0	0	583,200
4407771	LAKE-LEESBURG INTL	0	0	0	0	320,000	320,000
4410141	SR 44	0	1,914,501	0	0	0	2,478,438
4411351	SR 19	0	479,115	0	0	0	1,479,115
4411371	SR 44/SOUTH STREET	0	2,619,713	0	0	0	3,422,713
4424841	LAKE-LEESBURG INTL LAND ACQUISITION	0	0	0	400,000	0	400,000
4428751	SR 44 FROM EAST OF SR 35/MAIN STREET TO	854,000	0	1,498,715	0	0	2,352,715
4429101	SR 46 FROM .35 MILES W OF SWAN RD TO HOJIN	0	3,013,466	0	0	0	3,438,466

5-Year Summary of Projects by Funding Category

Project #	Project Name	2019/20	2020/21	2021/22	2022/23	2023/24	Total
DDR - DISTRICT DEDICATED REVENUE							
4435921	SR 44 / MAIN ST / SR 500 FROM 750' E OF SR 44 TO	560,000	0	5,174,173	0	0	5,734,173
4448731	LAKE-LEESBURG INTL INSTALL FUEL TANK	0	0	0	0	200,000	200,000
4448751	LAKE-UMATILLA MUNI RELOCATE ROAD	0	0	0	0	320,000	320,000
4449271	SR 500 / US 441 FROM SLEEPY HOLLOW RD TO	0	350,000	0	0	0	350,000
Total		25,171,491	12,199,607	32,210,109	940,396	840,000	127,984,283
DER - UNRESTRICTED STATE PRIMARY							
2382758	CR 46A REALIGNMENT	0	0	0	0	0	6,919
Total		0	0	0	0	0	6,919
DI - ST. - S/W INTER/INTRASTATE HWY							
2382757	SR 429/46 (WEKIVA PKWY)	0	0	0	0	0	10,491,910
Total		0	0	0	0	0	10,491,910
DIH - STATE IN-HOUSE PRODUCT SUPPORT							
2382752	SR 46 / US 441	0	0	0	0	0	838,253
2382753	SR 46	0	0	0	0	0	613,328
2382757	SR 429/46 (WEKIVA PKWY)	0	0	0	0	0	4,081,535
2383955	SR 500 (US 441)	0	0	0	0	0	651,944
4225703	SOUTH LAKE TRAIL PH IIIB	0	0	54,700	54,700	54,509	277,558
4293561	SR 500 (US 441)	27,500	27,500	27,400	0	0	356,412
4295561	SR 44 BRIDGE# 110063	20,000	0	0	0	0	159,960
4301321	SR 35 (US 301)	0	0	0	0	0	289,405
4354712	SOUTH SUMTER TRAIL- SR 471	0	0	0	22,220	0	22,220
4354713	SOUTH SUMTER TRAIL CR 478 FROM US 301 TO SR	0	0	0	20,000	0	20,000
4354714	SOUTH SUMTER TRAIL CR 673 FROM I-75 TO CR	0	0	0	20,000	0	20,000
4354715	S SUMTER TR WITHLACOOCHEE FOREST FROM	0	0	0	20,000	0	20,000

5-Year Summary of Projects by Funding Category

Project #	Project Name	2019/20	2020/21	2021/22	2022/23	2023/24	Total
DIH - STATE IN-HOUSE PRODUCT SUPPORT							
4358593	SR 50	20,000	0	0	0	0	71,131
4358594	SR 50	0	0	0	0	0	50,000
4358595	SR 50	0	0	0	0	0	41,032
4358931	SOUTH LAKE TRAIL - PHASE 4	0	0	0	0	0	52,256
4358932	SOUTH LAKE-SUMTER TRAIL PHASE IV FROM VAN	0	20,000	20,000	10,000	0	50,000
4358933	SOUTH LAKE-SUMTER TRAIL PHASE IV	0	25,000	25,000	20,000	0	70,000
4363601	SR40 TRAIL (BLACK BEAR SCENIC TRAIL)	0	0	0	0	0	10,000
4371141	SR 46	0	26,784	0	0	0	31,784
4371142	SR 46	0	78,070	0	0	0	83,070
4371146	SR 46/SR 429	0	0	21,620	0	0	26,620
4373291	SR 44	92,857	0	0	0	0	244,809
4379381	SR 19/S CENTRAL AVE	5,130	0	0	0	0	157,508
4385622	I-75 (SR 93) SUMTER CO REST AREA	0	0	0	0	57,200	88,113
4385623	I-75 (SR 93)	0	52,650	0	0	0	83,295
4391381	SR 19 (BAY STREET)	5,130	0	0	0	0	238,957
4391391	SR 25	5,130	0	0	0	0	25,593
4391421	SR 44 FROM EAST OF BRITT ROAD TO EAST OF	0	0	10,810	0	0	40,810
4410141	SR 44	0	10,530	0	0	0	30,530
4411351	SR 19	0	10,530	0	0	0	50,705
4411371	SR 44/SOUTH STREET	0	10,530	0	0	0	20,530
4428751	SR 44 FROM EAST OF SR 35/MAIN STREET TO	10,000	0	10,810	0	0	28,310
4429101	SR 46 FROM .35 MILES W OF SWAN RD TO HOJIN	0	10,530	0	0	0	20,530
4435071	SR 44 SOUTH OF LAKESHORE BLVD TO NORTH OF	0	0	0	0	0	10,000
4435461	US 441 FROM GRIFFIN RD TO MLK BLVD	0	0	0	0	0	10,000

5-Year Summary of Projects by Funding Category

Project #	Project Name	2019/20	2020/21	2021/22	2022/23	2023/24	Total
DIH - STATE IN-HOUSE PRODUCT SUPPORT							
4435921	SR 44 / MAIN ST / SR 500 FROM 750' E OF SR 44 TO	10,000	0	10,810	0	0	30,810
Total		195,747	272,124	181,150	166,920	111,709	8,917,008
DIOH - STATE 100% - OVERHEAD							
4358931	SOUTH LAKE TRAIL - PHASE 4	128,431	129,891	625,639	0	0	1,994,805
4363601	SR40 TRAIL (BLACK BEAR SCENIC TRAIL)	38,110	0	0	0	0	38,661
Total		166,541	129,891	625,639	0	0	2,033,466
DIS - STRATEGIC INTERMODAL SYSTEM							
2382757	SR 429/46 (WEKIVA PKWY)	0	0	0	0	0	20,827,642
Total		0	0	0	0	0	20,827,642
DITS - STATEWIDE ITS - STATE 100%.							
4130193	TRAFFIC ENGINEERING CONTRACTS	0	0	0	0	0	560,227
4130198	TRAFFIC ENGINEERING CONTRACTS	0	0	0	0	0	100,499
Total		0	0	0	0	0	660,726
DPTO - STATE - PTO							
4314001	LAKE-SECTION 5303	7,434	8,168	0	0	0	56,990
4333051	LAKE COUNTY	753,699	791,393	830,963	0	0	3,801,193
4384481	LAKE-LEESBURG INTL	200,000	0	0	0	0	200,000
4384972	LAKE-UMATILLA MUNI ACQUIRE CENTRAL	0	0	0	0	600,000	600,000
4408011	LAKE-SUMTER MPO PLANNING STUDIES	0	0	8,923	8,923	8,923	26,769
4424531	LAKE-BLOCK GRANT OPERATING ASSISTANCE	0	0	0	880,664	916,137	1,796,801
4448721	LAKE-LEESBURG INTL PAVEMENT	320,000	0	0	0	0	320,000
4448741	LAKE-UMATILLA MUNI HANGAR DEVELOPMENT	800,000	0	0	0	0	800,000
Total		2,081,133	799,561	839,886	889,587	1,525,060	7,601,753
DRA - REST AREAS - STATE 100%							
4385622	I-75 (SR 93) SUMTER CO REST AREA	0	0	0	0	19,726,182	20,626,182

5-Year Summary of Projects by Funding Category

Project #	Project Name	2019/20	2020/21	2021/22	2022/23	2023/24	Total
DRA - REST AREAS - STATE 100%							
4385623	I-75 (SR 93)	0	17,818,044	0	0	0	18,718,044
Total		0	17,818,044	0	0	19,726,182	39,344,226
DS - STATE PRIMARY HIGHWAYS & PTO							
2382752	SR 46 / US 441	0	0	0	0	0	1,091,033
2382753	SR 46	0	0	0	0	0	155,141
2382757	SR 429/46 (WEKIVA PKWY)	0	0	0	0	0	1,991,815
2383955	SR 500 (US 441)	0	0	0	0	0	223,149
4225703	SOUTH LAKE TRAIL PH IIIB	0	0	0	0	0	6,815
4291571	ASPHALT REPAIR	0	0	0	0	0	12,437
4293561	SR 500 (US 441)	0	0	0	0	0	9,632
4301321	SR 35 (US 301)	0	0	0	0	0	20,000
4358593	SR 50	0	0	0	0	0	3,530
4358595	SR 50	0	0	0	0	0	486,840
4358932	SOUTH LAKE-SUMTER TRAIL PHASE IV FROM VAN	0	150,000	0	0	0	150,000
4371146	SR 46/SR 429	0	0	10,810	0	0	10,810
4373291	SR 44	0	0	0	0	0	4,577
4385622	I-75 (SR 93) SUMTER CO REST AREA	0	0	0	0	0	341,312
4385623	I-75 (SR 93)	0	0	0	0	0	647,801
4391381	SR 19 (BAY STREET)	443,014	0	0	0	0	613,706
4391391	SR 25	0	0	0	0	0	168,488
4391421	SR 44 FROM EAST OF BRITT ROAD TO EAST OF	0	0	167,902	0	0	182,943
4411351	SR 19	0	5,772,187	0	0	0	6,184,892
Total		443,014	5,922,187	178,712	0	0	12,304,921
DU - STATE PRIMARY/FEDERAL REIMB							
4314001	LAKE-SECTION 5303	59,474	65,343	0	0	0	455,912

5-Year Summary of Projects by Funding Category

Project #	Project Name	2019/20	2020/21	2021/22	2022/23	2023/24	Total
DU - STATE PRIMARY/FEDERAL REIMB							
4333081	LAKE-FTA SEC 5311 RURAL TRANSPORTATION	540,060	567,063	595,416	0	0	2,629,622
4333101	SUMTER-SEC 5311 RURAL TRANSPORTATION	331,776	348,364	365,783	0	0	1,639,287
4408011	LAKE-SUMTER MPO PLANNING STUDIES	0	0	71,386	71,386	71,386	214,158
4424581	LAKE-SECTION 5311 RURAL TRANSPORTATION	0	0	0	625,187	656,446	1,281,633
4424611	SUMTER-SECTION 5311 RURAL TRANSPORTATION	0	0	0	384,072	403,275	787,347
Total		931,310	980,770	1,032,585	1,080,645	1,131,107	7,007,959
EB - EQUITY BONUS							
2382753	SR 46	0	0	0	0	0	8,988
2382758	CR 46A REALIGNMENT	0	0	0	0	0	175,184
2383955	SR 500 (US 441)	0	0	0	0	0	1,640,961
4293561	SR 500 (US 441)	0	0	0	0	0	71,626
4358931	SOUTH LAKE TRAIL - PHASE 4	0	0	0	0	0	635,000
Total		0	0	0	0	0	2,531,759
FAA - FEDERAL AVIATION ADMIN							
4316241	LAKE-UMATILLA	0	0	450,000	0	0	450,000
4353162	LAKE-UMATILLA MUNI EXTEND RUNWAY 1-19	0	135,000	0	1,350,000	0	1,485,000
4384471	LAKE-LEESBURG INTL	0	0	1,575,000	0	0	1,575,000
4407751	LAKE-LEESBURG INTL	4,050,000	0	0	0	0	4,050,000
4407761	LAKE-LEESBURG INTL	936,000	5,625,000	0	0	0	6,561,000
Total		4,986,000	5,760,000	2,025,000	1,350,000	0	14,121,000
FCO - PRIMARY/FIXED CAPITAL OUTLAY							
4425712	LEESBURG OPERATIONS COMPLEX FCO	67,000	0	0	0	0	67,000
Total		67,000	0	0	0	0	67,000
FTA - FEDERAL TRANSIT ADMINISTRATION							
4143312	LAKE-COUNTY CAPITAL	3,503,801	3,608,916	3,717,183	3,828,698	3,943,560	23,027,557

5-Year Summary of Projects by Funding Category

Project #	Project Name	2019/20	2020/21	2021/22	2022/23	2023/24	Total
FTA - FEDERAL TRANSIT ADMINISTRATION							
4333051	LAKE COUNTY	0	0	0	0	0	1,430,000
4388671	LAKE-SEC 5339	437,845	0	0	0	0	1,386,231
Total		3,941,646	3,608,916	3,717,183	3,828,698	3,943,560	25,843,788
GFSA - GF STPBG ANY AREA							
2383955	SR 500 (US 441)	12,782,211	0	0	0	0	12,782,211
Total		12,782,211	0	0	0	0	12,782,211
GFSL - GF STPBG <200K							
2383955	SR 500 (US 441)	2,372,272	0	0	0	0	2,372,272
Total		2,372,272	0	0	0	0	2,372,272
GRSC - GROWTH MANAGEMENT FOR SCOP							
4392231	C-478	0	215,179	0	0	0	465,953
Total		0	215,179	0	0	0	465,953
HSP - SAFETY (HIWAY SAFETY PROGRAM)							
4394151	CITRUS TOWER BOULEVARD	0	0	0	0	0	45,465
4397011	LAKESHORE DRIVE	0	0	0	0	0	193,400
4397021	LAKE LOUISA ROAD	0	0	0	0	0	167,200
4399121	CR 478	0	0	0	0	0	195,065
Total		0	0	0	0	0	601,130
LF - LOCAL FUNDS							
2383193	LEESBURG-LAKE HARRIS REGIONAL POND	424,500	0	0	0	0	424,500
2383955	SR 500 (US 441)	350,000	0	0	0	0	451,108
4143312	LAKE-COUNTY CAPITAL	875,950	902,229	929,296	957,175	985,890	5,756,890
4314001	LAKE-SECTION 5303	7,434	8,168	0	0	0	56,989
4316201	LAKE-UMATILLA	0	150,000	0	0	0	150,000

5-Year Summary of Projects by Funding Category

Project #	Project Name	2019/20	2020/21	2021/22	2022/23	2023/24	Total
LF - LOCAL FUNDS							
4316241	LAKE-UMATILLA	0	0	10,000	0	0	10,000
4316251	LAKE-UMATILLA	0	0	100,000	0	0	100,000
4333051	LAKE COUNTY	753,699	791,393	830,963	0	0	3,801,193
4333081	LAKE-FTA SEC 5311 RURAL TRANSPORTATION	540,060	567,063	595,416	0	0	2,629,622
4333101	SUMTER-SEC 5311 RURAL TRANSPORTATION	331,776	348,364	365,783	0	0	1,639,287
4353162	LAKE-UMATILLA MUNI EXTEND RUNWAY 1-19	0	3,000	30,000	0	0	33,000
4363651	ITS ARCHITECTURE STUDY	390,000	0	0	0	0	490,000
4384471	LAKE-LEESBURG INTL	0	0	87,500	0	0	87,500
4384481	LAKE-LEESBURG INTL	50,000	0	0	0	0	50,000
4384491	LAKE-LEESBURG INTL	0	0	500,000	0	0	500,000
4384972	LAKE-UMATILLA MUNI ACQUIRE CENTRAL	0	0	0	0	150,000	150,000
4388671	LAKE-SEC 5339	109,461	0	0	0	0	536,655
4394151	CITRUS TOWER BOULEVARD	0	0	0	0	0	1,680
4407751	LAKE-LEESBURG INTL	90,000	0	0	0	0	180,000
4407761	LAKE-LEESBURG INTL	20,800	125,000	0	0	0	145,800
4407771	LAKE-LEESBURG INTL	0	0	0	0	80,000	80,000
4408011	LAKE-SUMTER MPO PLANNING STUDIES	0	0	8,923	8,923	8,923	26,769
4417101	ROUND LAKE ROAD WIDE & EXTEND	1,150,000	0	0	0	0	1,150,000
4424531	LAKE-BLOCK GRANT OPERATING ASSISTANCE	0	0	0	880,664	916,137	1,796,801
4424581	LAKE-SECTION 5311 RURAL TRANSPORTATION	0	0	0	625,187	656,446	1,281,633
4424611	SUMTER-SECTION 5311 RURAL TRANSPORTATION	0	0	0	384,072	403,275	787,347
4424841	LAKE-LEESBURG INTL LAND ACQUISITION	0	0	0	100,000	0	100,000
4448721	LAKE-LEESBURG INTL PAVEMENT	80,000	0	0	0	0	80,000
4448731	LAKE-LEESBURG INTL INSTALL FUEL TANK	0	0	0	0	50,000	50,000

5-Year Summary of Projects by Funding Category

Project #	Project Name	2019/20	2020/21	2021/22	2022/23	2023/24	Total
LF - LOCAL FUNDS							
4448741	LAKE-UMATILLA MUNI HANGAR DEVELOPMENT	200,000	0	0	0	0	200,000
4448751	LAKE-UMATILLA MUNI RELOCATE ROAD	0	0	0	0	80,000	80,000
Total		5,373,680	2,895,217	3,457,881	2,956,021	3,330,671	22,826,774
LFP - LOCAL FUNDS FOR PARTICIPATING							
4273051	RESERVE BOX-VILLAGES	0	415,663	0	0	0	415,663
4354931	WEST STREET	98,500	0	0	0	0	98,500
Total		98,500	415,663	0	0	0	514,163
NHPP - IM, BRDG REPL, NATNL HWY-MAP21							
2382757	SR 429/46 (WEKIVA PKWY)	0	0	0	0	0	18,996,086
Total		0	0	0	0	0	18,996,086
NHRE - NAT HWY PERFORM - RESURFACING							
4391391	SR 25	693,023	0	0	0	0	693,023
Total		693,023	0	0	0	0	693,023
PKBD - TURNPIKE MASTER BOND FUND							
4357851	FLORIDA'S TURNPIKE	20,000	114,922,807	0	0	0	114,942,807
4357861	FLORIDA'S TURNPIKE	0	0	256,615,237	0	0	256,615,237
Total		20,000	114,922,807	256,615,237	0	0	371,558,044
PKED - 2012 SB1998-TURNPIKE FEEDER RD							
2382752	SR 46 / US 441	0	0	0	0	0	22,487,470
2382753	SR 46	0	0	0	0	0	2,237,167
2382757	SR 429/46 (WEKIVA PKWY)	0	0	0	0	0	51,395,765
2382758	CR 46A REALIGNMENT	0	0	0	0	0	3,025,791
4357871	FLORIDA'S TURNPIKE	10,412,203	0	0	0	0	10,412,203
Total		10,412,203	0	0	0	0	89,558,396

5-Year Summary of Projects by Funding Category

Project #	Project Name	2019/20	2020/21	2021/22	2022/23	2023/24	Total
PKYI - TURNPIKE IMPROVEMENT							
2382757	SR 429/46 (WEKIVA PKWY)	0	0	0	0	0	18,452
4061103	FLORIDA'S TURNPIKE	316,386	0	0	0	0	366,517
4357851	FLORIDA'S TURNPIKE	6,760,100	0	0	0	0	21,400,910
4357861	FLORIDA'S TURNPIKE	2,050,000	3,385,200	914,400	0	2,650,000	25,161,696
4357871	FLORIDA'S TURNPIKE	6,999,974	2,350,000	4,456,900	0	0	246,014,398
4357881	FLORIDA'S TURNPIKE	0	13,486,020	1,980,900	0	900,000	98,095,489
4357882	WIDEN TPK FROM CR470 INTCHG TO	0	1,022,700	0	0	0	1,024,200
4357891	FLORIDA'S TURNPIKE	0	3,101,050	2,650,000	3,466,600	0	166,953,934
4402941	FLORIDA'S TURNPIKE	0	0	0	0	0	6,323
4402942	FLORIDA'S TURNPIKE	0	0	0	0	0	46,738
4402951	FLORIDA'S TURNPIKE	0	0	0	0	0	7,455
4402952	FLORIDA'S TURNPIKE	0	0	0	0	0	43,112
4417171	RECONSTRUCT TPK MAINLINE SUMTER CNTY (MP	0	0	0	0	0	27,435
4417172	SAFETY IMPROVEMENTS FOR TPK MAINLINE IN	0	0	0	0	0	40,519
4439901	BAILEY RD BRIDGE REPLACEMENT OVER TPK	0	0	0	0	0	2,117
Total		16,126,460	23,344,970	10,002,200	3,466,600	3,550,000	559,209,295
PKYR - TURNPIKE RENEWAL & REPLACEMENT							
4402941	FLORIDA'S TURNPIKE	21,702,853	0	0	0	0	23,850,331
4402942	FLORIDA'S TURNPIKE	1,434,075	0	0	0	0	1,685,154
4402951	FLORIDA'S TURNPIKE	1,344,419	0	12,423,555	0	0	13,769,603
4402952	FLORIDA'S TURNPIKE	0	0	1,449,434	0	0	1,745,094
4417171	RECONSTRUCT TPK MAINLINE SUMTER CNTY (MP	3,680,207	25,262,200	0	0	0	28,952,907
4417172	SAFETY IMPROVEMENTS FOR TPK MAINLINE IN	0	1,725,934	0	0	0	2,072,623
4439901	BAILEY RD BRIDGE REPLACEMENT OVER TPK	0	1,426,052	0	0	0	1,426,052

5-Year Summary of Projects by Funding Category

Project #	Project Name	2019/20	2020/21	2021/22	2022/23	2023/24	Total
PKYR - TURNPIKE RENEWAL & REPLACEMENT							
Total		28,161,554	28,414,186	13,872,989	0	0	73,501,764
PL - METRO PLAN (85% FA; 15% OTHER)							
4393292	LAKE SUMTER URBAN AREA FY	568,795	0	0	0	0	1,282,744
4393293	LAKE SUMTER URBAN AREA FY	0	568,795	568,795	0	0	1,137,590
4393294	LAKE SUMTER URBAN AREA FY	0	0	0	568,795	0	568,795
Total		568,795	568,795	568,795	568,795	0	2,989,129
RED - REDISTR. OF FA (SEC 1102F)							
2382758	CR 46A REALIGNMENT	0	0	0	0	0	2,200,192
2383955	SR 500 (US 441)	0	0	0	0	0	976,818
4358931	SOUTH LAKE TRAIL - PHASE 4	0	0	0	0	0	2,865,000
Total		0	0	0	0	0	6,042,010
REPE - REPURPOSED FEDERAL EARMARKS							
2383955	SR 500 (US 441)	6,859,777	0	0	0	0	6,859,777
Total		6,859,777	0	0	0	0	6,859,777
SA - STP, ANY AREA							
2382752	SR 46 / US 441	0	0	0	0	0	5,297,031
2382753	SR 46	0	0	0	0	0	1,344,399
2382757	SR 429/46 (WEKIVA PKWY)	0	0	0	0	0	843,367
2382758	CR 46A REALIGNMENT	0	0	0	0	0	4,182,545
2383955	SR 500 (US 441)	1,345,460	0	0	0	0	1,933,988
4293561	SR 500 (US 441)	0	0	0	0	0	564,975
4301321	SR 35 (US 301)	0	0	32,636	0	0	32,636
4349121	C-470	0	156,164	0	0	0	156,164
4363601	SR40 TRAIL (BLACK BEAR SCENIC TRAIL)	1,100,000	0	0	0	0	1,100,000

5-Year Summary of Projects by Funding Category

Project #	Project Name	2019/20	2020/21	2021/22	2022/23	2023/24	Total
SA - STP, ANY AREA							
4391391	SR 25	2,705,901	0	0	0	0	2,705,901
4410141	SR 44	0	10,384,518	0	0	0	10,384,518
4428751	SR 44 FROM EAST OF SR 35/MAIN STREET TO	0	0	14,061,037	0	0	14,061,037
Total		5,151,361	10,540,682	14,093,673	0	0	42,606,561
SABR - STP, BRIDGES							
4295561	SR 44 BRIDGE# 110063	0	0	0	0	0	654,224
Total		0	0	0	0	0	654,224
SCED - 2012 SB1998-SMALL CO OUTREACH							
4392231	C-478	0	512,821	0	0	0	512,821
Total		0	512,821	0	0	0	512,821
SCOP - SMALL COUNTY OUTREACH PROGRAM							
4392231	C-478	0	489,809	0	0	0	489,809
Total		0	489,809	0	0	0	489,809
SCWR - 2015 SB2514A-SMALL CO OUTREACH							
4392231	C-478	0	532,191	0	0	0	532,191
Total		0	532,191	0	0	0	532,191
SIWR - 2015 SB2514A-STRATEGIC INT SYS							
2382757	SR 429/46 (WEKIVA PKWY)	0	0	0	0	0	8,411,571
Total		0	0	0	0	0	8,411,571
SL - STP, AREAS <= 200K							
2382752	SR 46 / US 441	0	0	0	0	0	5,000
2382757	SR 429/46 (WEKIVA PKWY)	0	0	0	0	0	4,710,972
2382758	CR 46A REALIGNMENT	175,524	0	0	0	0	2,914,292
2383955	SR 500 (US 441)	5,250,126	0	0	0	0	5,250,126

5-Year Summary of Projects by Funding Category

Project #	Project Name	2019/20	2020/21	2021/22	2022/23	2023/24	Total
SL - STP, AREAS <= 200K							
4225703	SOUTH LAKE TRAIL PH IIIB	0	0	0	1,100,000	25,969	1,125,969
4293561	SR 500 (US 441)	0	0	0	0	0	2,499,332
4295561	SR 44 BRIDGE# 110063	0	0	0	0	0	17,184
4301321	SR 35 (US 301)	0	0	1,792,364	0	0	1,989,796
4309753	LAKE-WEKIVA TRAIL FROM SR 46 TO HOJIN	5,000	0	0	0	0	5,000
4309755	LAKE-WEKIVA TRAIL	708,671	0	0	0	0	708,671
4349121	C-470	0	3,960,292	0	0	0	4,111,030
4354712	SOUTH SUMTER TRAIL- SR 471	0	0	0	611,050	0	611,050
4354713	SOUTH SUMTER TRAIL CR 478 FROM US 301 TO SR	0	0	0	3,500,000	0	3,500,000
4354714	SOUTH SUMTER TRAIL CR 673 FROM I-75 TO CR	0	0	0	2,809,831	0	2,809,831
4358931	SOUTH LAKE TRAIL - PHASE 4	0	15,700	0	0	0	165,751
4371145	CR 46A	10,260	0	0	0	0	10,260
4371146	SR 46/SR 429	0	0	1,224,106	0	0	1,224,106
4393292	LAKE SUMTER URBAN AREA FY	0	0	0	0	0	280,000
Total		6,149,581	3,975,992	3,016,470	8,020,881	25,969	31,938,370
SN - STP, MANDATORY NON-URBAN <= 5K							
2382758	CR 46A REALIGNMENT	0	0	0	0	0	3,176,208
4301321	SR 35 (US 301)	0	0	479,382	0	0	2,130,678
4309753	LAKE-WEKIVA TRAIL FROM SR 46 TO HOJIN	60,970	0	0	0	0	300,428
4309755	LAKE-WEKIVA TRAIL	2,040,738	0	0	0	0	2,040,738
4349121	C-470	0	1,027,565	0	0	0	2,282,999
4354712	SOUTH SUMTER TRAIL- SR 471	0	0	0	3,125,151	0	3,125,151
4358931	SOUTH LAKE TRAIL - PHASE 4	0	0	0	0	0	320,000
4371145	CR 46A	548,538	0	0	0	0	548,538

5-Year Summary of Projects by Funding Category

Project #	Project Name	2019/20	2020/21	2021/22	2022/23	2023/24	Total
SN - STP, MANDATORY NON-URBAN <= 5K							
4371146	SR 46/SR 429	0	0	1,176,436	0	0	1,176,436
Total		2,650,246	1,027,565	1,655,818	3,125,151	0	15,101,176
SR2T - SAFE ROUTES - TRANSFER							
4394931	CR 473	864,138	0	0	0	0	1,015,763
Total		864,138	0	0	0	0	1,015,763
STED - 2012 SB1998-STRATEGIC ECON COR							
2382757	SR 429/46 (WEKIVA PKWY)	0	0	0	0	0	80,017,607
Total		0	0	0	0	0	80,017,607
TALL - TRANSPORTATION ALTS- <200K							
4225703	SOUTH LAKE TRAIL PH IIIB	0	0	0	0	769,623	845,722
4309753	LAKE-WEKIVA TRAIL FROM SR 46 TO HOJIN	508,153	0	0	0	0	508,153
4309755	LAKE-WEKIVA TRAIL	0	0	0	0	0	224,001
4354712	SOUTH SUMTER TRAIL- SR 471	0	0	0	772,686	0	772,686
4390481	EAST ORANGE AVENUE	0	3,000	0	0	0	3,000
4396631	HANCOCK RD (LOST LAKE ELEM SCHL)	0	161,610	0	0	0	161,610
4396831	LOG HOUSE RD (PINE RIDGE ELEM SCH)	0	28,744	0	0	0	28,744
4396841	RADIO ROAD (TREADWAY ELEM SCH)	0	190,600	0	0	0	190,600
4396851	CR561/MONROE ST (ASTATULA ELEM SCH)	0	52,670	0	0	0	52,670
4396861	CR44 BYPASS-(EUSTIS MIDDLE SCH)	0	76,460	0	0	0	76,460
4396871	LAKESHORE DR (PINE EDGE ELEM)	0	3,000	0	0	0	3,000
Total		508,153	516,084	0	772,686	769,623	2,866,646
TALN - TRANSPORTATION ALTS- < 5K							
4309753	LAKE-WEKIVA TRAIL FROM SR 46 TO HOJIN	15,013	0	0	0	0	425,982
4309755	LAKE-WEKIVA TRAIL	233,716	0	0	0	0	233,716

5-Year Summary of Projects by Funding Category

Project #	Project Name	2019/20	2020/21	2021/22	2022/23	2023/24	Total
TALN - TRANSPORTATION ALTS- < 5K							
4354712	SOUTH SUMTER TRAIL- SR 471	0	0	0	252,498	0	313,937
Total		248,729	0	0	252,498	0	973,635
TALT - TRANSPORTATION ALTS- ANY AREA							
4225703	SOUTH LAKE TRAIL PH IIIB	0	0	1,400,000	0	3,154,661	4,554,661
4309753	LAKE-WEKIVA TRAIL FROM SR 46 TO HOJIN	0	0	0	0	0	5,000
4309755	LAKE-WEKIVA TRAIL	0	0	0	0	0	20,000
4354712	SOUTH SUMTER TRAIL- SR 471	0	0	0	0	0	2,921,902
4354714	SOUTH SUMTER TRAIL CR 673 FROM I-75 TO CR	0	0	0	3,500,000	0	3,500,000
4354715	S SUMTER TR WITHLACOOCHEE FOREST FROM	0	0	0	1,387,422	0	1,387,422
4390481	EAST ORANGE AVENUE	0	175,900	0	0	0	175,900
4396831	LOG HOUSE RD (PINE RIDGE ELEM SCH)	0	70,466	0	0	0	70,466
4396871	LAKESHORE DR (PINE EDGE ELEM)	0	140,930	0	0	0	140,930
Total		0	387,296	1,400,000	4,887,422	3,154,661	12,776,281
TLWR - Trail Network - Wheels on Road							
4358931	SOUTH LAKE TRAIL - PHASE 4	0	0	0	0	0	700,000
Total		0	0	0	0	0	700,000
TMBW - WEKIVA PARKWAY TOLL MAINT							
2447543	VEGETATION AND	0	0	0	0	0	333,440
4391681	WEKIVA TOLL FACILITIES MAINTENANCE	5,016	5,016	5,016	5,016	5,016	39,304
Total		5,016	5,016	5,016	5,016	5,016	372,744
TRWR - 2015 SB2514A-TRAN REG INCT PRG							
4417101	ROUND LAKE ROAD WIDE & EXTEND	1,150,000	0	0	0	0	1,150,000
Total		1,150,000	0	0	0	0	1,150,000
WKBL - 2012 SB1998-TRANS BEACHLINE-TP							
2382752	SR 46 / US 441	0	0	0	0	0	7,138,803

5-Year Summary of Projects by Funding Category

Project #	Project Name	2019/20	2020/21	2021/22	2022/23	2023/24	Total
WKBL - 2012 SB1998-TRANS BEACHLINE-TP							
2382753	SR 46	0	0	0	0	0	7,933,412
2382757	SR 429/46 (WEKIVA PKWY)	0	0	0	0	0	20,815,392
Total		0	0	0	0	0	35,887,607
WKOC - 2012 SB1998-REPAYMNT OOC DEBT							
2382752	SR 46 / US 441	0	0	0	0	0	9,100,929
2382753	SR 46	0	0	0	0	0	3,122,778
2382757	SR 429/46 (WEKIVA PKWY)	0	0	0	0	0	85,470,074
2382758	CR 46A REALIGNMENT	0	0	0	0	0	2,459,892
Total		0	0	0	0	0	100,153,673

5-Year Summary of Funding Source

Funding Source	2019/20	2020/21	2021/22	2022/23	2023/24	Total
Federal	92,043,395	30,147,931	40,826,969	23,886,776	9,024,920	195,929,991
Federal Earmark	6,859,777	0	0	0	0	6,859,777
Local	5,472,180	3,310,880	3,457,881	2,956,021	3,330,671	18,527,633
State	91,298,954	209,693,726	319,190,322	10,140,118	29,931,016	660,254,136
State 100%	1,150,000	532,191	0	0	0	1,682,191
Toll/Turnpike	5,016	5,016	5,016	5,016	5,016	25,080
Total	196,829,322	243,689,744	363,480,188	36,987,931	42,291,623	883,278,808

Section 1 - Transportation Planning

LAKE SUMTER URBAN AREA FY 2018/2019-2019/2020 UPWP

4393292

Non-SIS



Project Description:

Work Summary: TRANSPORTATION PLANNING **From:**

To:

Lead Agency: Responsible Agency Not Available **Length:** 0.000 mi

Phase	Fund Source	2019/20	2020/21	2021/22	2022/23	2023/24	Total
PLN	PL	568,795	0	0	0	0	568,795
Total		568,795	0	0	0	0	568,795

Prior Year Cost: 993,949
Future Year Cost: 0
Total Project Cost: 1,562,744
LRTP: N/A

LAKE SUMTER URBAN AREA FY 2020/2021-2021/2022 UPWP

4393293

Non-SIS



Project Description:

Work Summary: TRANSPORTATION PLANNING **From:**

To:

Lead Agency: Responsible Agency Not Available **Length:** 0.000 mi

Phase	Fund Source	2019/20	2020/21	2021/22	2022/23	2023/24	Total
PLN	PL	0	568,795	568,795	0	0	1,137,590
Total		0	568,795	568,795	0	0	1,137,590

Prior Year Cost: 0
Future Year Cost: 0
Total Project Cost: 1,137,590
LRTP: N/A

LAKE SUMTER URBAN AREA FY 2022/2023-2023/2024 UPWP

4393294

Non-SIS



Project Description:

Work Summary: TRANSPORTATION PLANNING **From:**

To:

Lead Agency: Responsible Agency Not Available **Length:** .000

Phase	Fund Source	2019/20	2020/21	2021/22	2022/23	2023/24	Total
PLN	PL	0	0	0	568,795	0	568,795
Total		0	0	0	568,795	0	568,795

Prior Year Cost: 0
Future Year Cost: 0
Total Project Cost: 568,795

LAKE-SECTION 5303

4314001

Non-SIS

Project Description:

Work Summary: PTO STUDIES **From:** LAKE-SUMTER MPO PLANNING

To: STUDIES

Lead Agency: LSMPO **Length:** 0.000 mi

No Map Available

Phase	Fund Source	2019/20	2020/21	2021/22	2022/23	2023/24	Total
PLN	DU	59,474	65,343	0	0	0	124,817
PLN	DPTO	7,434	8,168	0	0	0	15,602
PLN	LF	7,434	8,168	0	0	0	15,602
Total		74,342	81,679	0	0	0	156,021

Prior Year Cost: 413,870
Future Year Cost: 0
Total Project Cost: 569,891
L RTP: pg.11

LAKE-SUMTER MPO PLANNING STUDIES

4408011

Non-SIS

Project Description:

Work Summary: PTO STUDIES **From:**

To:

Lead Agency: MANAGED BY LAKE SUMTER MPO **Length:** 0.000 mi

No Map Available

Phase	Fund Source	2019/20	2020/21	2021/22	2022/23	2023/24	Total
PLN	DU	0	0	71,386	71,386	71,386	214,158
PLN	DPTO	0	0	8,923	8,923	8,923	26,769
PLN	LF	0	0	8,923	8,923	8,923	26,769
Total		0	0	89,232	89,232	89,232	267,696

Prior Year Cost: 0
Future Year Cost: 0
Total Project Cost: 267,696
L RTP: N/A

SR 50

4358595

SIS



Project Description:

Work Summary: PRELIMINARY ENGINEERING **From:** FROM SUMTER/LAKE COUNTY LINE

To: TO CR 33

Lead Agency: Managed by FDOT **Length:** 4.293 mi

Phase	Fund Source	2019/20	2020/21	2021/22	2022/23	2023/24	Total
ENV	DDR	524,000	0	0	0	0	524,000
Total		524,000	0	0	0	0	524,000

Prior Year Cost: 5,426,673
Future Year Cost: 0
Total Project Cost: 5,950,673
LRTP: pg. 50

SR 50

4358593

SIS



Project Description:

Work Summary: PRELIMINARY ENGINEERING **From:** FROM HERNDO/SUMTER COUNTY LINE

To: TO WEST OF CR 757

Lead Agency: Managed by FDOT **Length:** 2.046 mi

Phase	Fund Source	2019/20	2020/21	2021/22	2022/23	2023/24	Total
ROW	DIH	20,000	0	0	0	0	20,000
ROW	DDR	2,600,000	0	0	0	0	2,600,000
ENV	DDR	2,550,000	0	0	0	0	2,550,000
Total		5,170,000	0	0	0	0	5,170,000

Prior Year Cost: 3,383,340
Future Year Cost: 0
Total Project Cost: 8,553,340
LRTP: pg. 11

SR 50

4358594

Non-SIS



Project Description:

Work Summary: PRELIMINARY ENGINEERING **From:** FROM EAST OF CR 757
To: TO THE SUMTER/LAKE COUNTY LINE
Lead Agency: Managed by FDOT **Length:** 8.585 mi

Phase	Fund Source	2019/20	2020/21	2021/22	2022/23	2023/24	Total
ENV	DDR	5,400,000	0	0	0	0	5,400,000
Total		5,400,000	0	0	0	0	5,400,000

Prior Year Cost: 7,050,000
Future Year Cost: 0
Total Project Cost: 12,450,000
L RTP: pg. 11

Section 2 - Roadway Capacity

C-470

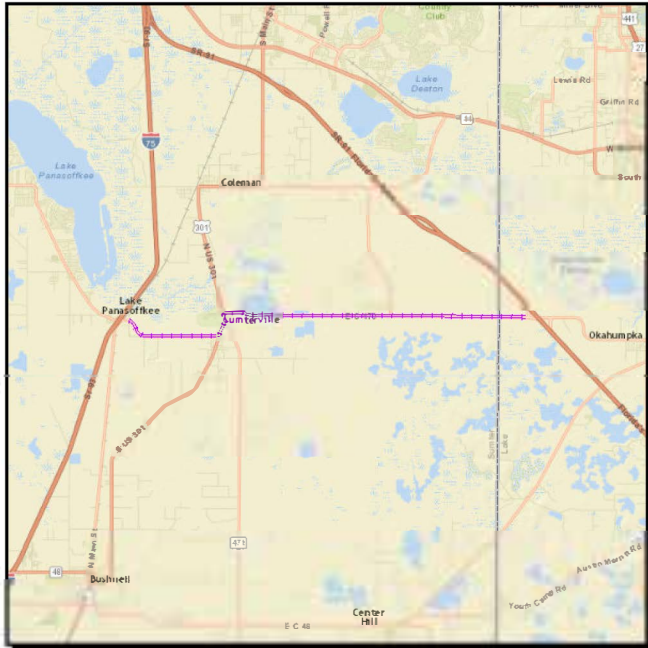
4349121

Non-SIS

Project Description: C-470 FROM CR 527 TO SR 91 (Turnpike)

Work Summary: ADD LANES & REHABILITATE PVMNT
From: FROM CR 527
To: TO SR 91 (TURNPIKE)

Lead Agency: Managed by FDOT
Length: 9.019 mi



Phase	Fund Source	2019/20	2020/21	2021/22	2022/23	2023/24	Total
PE	SN	0	1,027,565	0	0	0	1,027,565
PE	SA	0	156,164	0	0	0	156,164
PE	SL	0	3,960,292	0	0	0	3,960,292
Total		0	5,144,021	0	0	0	5,144,021

Prior Year Cost: 1,406,172
Future Year Cost: 0
Total Project Cost: 6,550,193
LRTP: pg.11

CR 46A REALIGNMENT

2382758

Non-SIS



Project Description: CR 46A Alignment

Work Summary: NEW ROAD CONSTRUCTION

From: FROM SR 46

To: TO NORTH OF ARUNDEL WAY

Lead Agency: FDOT

Length: 00.00 mi

Phase	Fund Source	2019/20	2020/21	2021/22	2022/23	2023/24	Total
CST	SL	175,524	0	0	0	0	175,524
Total		175,524	0	0	0	0	175,524

Prior Year Cost: 18,503,601

Future Year Cost: 0

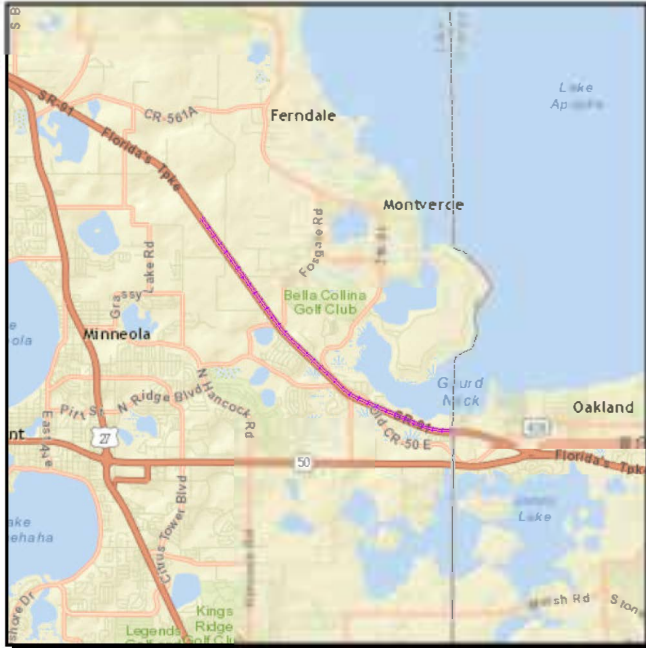
Total Project Cost: 18,679,125

LRTP: pg.11

FLORIDA'S TURNPIKE

4357851

SIS



Project Description: WIDEN TPK- ORANGE / LAKE C/L TO MINNEOLA INTCHG (MP 274.2 - 279)

Work Summary: ADD LANES & RECONSTRUCT

From: FROM ORANGE/LAKE C/L

To: TO MINNEOLA (274-279.14) 4TO8LNS W/EX

Lead Agency: Managed by FDOT

Length: 5.137 mi

Phase	Fund Source	2019/20	2020/21	2021/22	2022/23	2023/24	Total
ROW	PKYI	5,760,100	0	0	0	0	5,760,100
RRU	PKBD	20,000	0	0	0	0	20,000
ENV	PKYI	1,000,000	0	0	0	0	1,000,000
CST	PKBD	0	114,922,807	0	0	0	114,922,807
Total		6,780,100	114,922,807	0	0	0	121,702,907

Prior Year Cost: 14,640,810
Future Year Cost: 0
Total Project Cost: 136,343,717
LRTP: pg.11

FLORIDA'S TURNPIKE

4357891

SIS

Project Description: WIDEN TPK FROM CR468 INTCHG TO I-75 INTCHG (MP 301.4 - 308.9)

Work Summary: ADD LANES & RECONSTRUCT **From:** FROM CR468 INTCHG

To: TO I-75 INTCHG (MP 301.4 - 308.9)(4 TO 6)

Lead Agency: Managed by FDOT **Length:** 7.234 mi

No Map Available

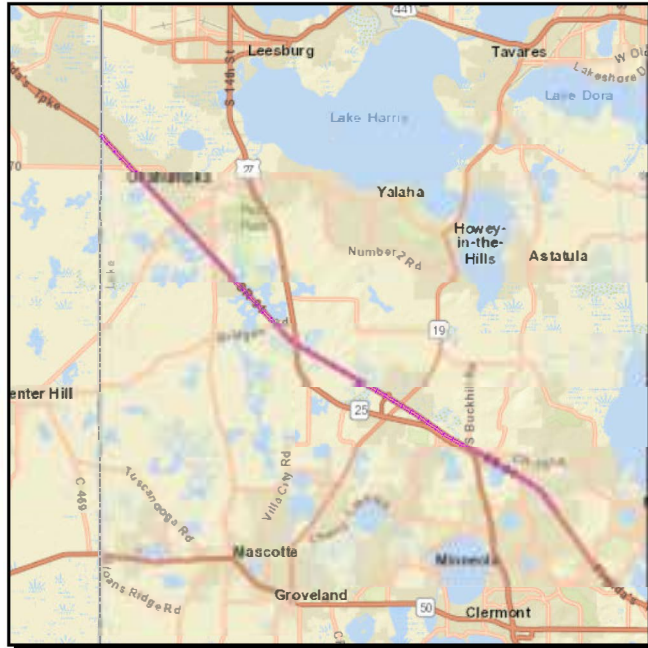
Phase	Fund Source	2019/20	2020/21	2021/22	2022/23	2023/24	Total
PE	PKYI	0	3,001,050	1,125,000	0	0	4,126,050
RRU	PKYI	0	100,000	0	0	0	100,000
ENV	PKYI	0	0	1,525,000	0	0	1,525,000
ROW	PKYI	0	0	0	3,466,600	0	3,466,600
Total		0	3,101,050	2,650,000	3,466,600	0	9,217,650

Prior Year Cost: 7,084
Future Year Cost: 157,729,200
Total Project Cost: 166,953,934
L RTP: pg.11

FLORIDA'S TURNPIKE

4357871

SIS



Project Description: WIDEN TPK- LEESBURG NORTH INTCHG TO LAKE/SUMT ER C/L (MP 289.3 - 297.9)

Work Summary: ADD LANES & RECONSTRUCT **From:** FROM LEESBURG NORTH INTCHG

To: TO LAKE/SUMTER C/L(MP289.3-297.9)(4-8)

Lead Agency: Lake County **Length:** 8.549 mi

Phase	Fund Source	2019/20	2020/21	2021/22	2022/23	2023/24	Total
PE	PKYI	6,999,974	1,290,000	0	0	0	8,289,974
PE	PKED	10,412,203	0	0	0	0	10,412,203
ENV	PKYI	0	1,060,000	0	0	0	1,060,000
ROW	PKYI	0	0	4,456,900	0	0	4,456,900
Total		17,412,177	2,350,000	4,456,900	0	0	24,219,077

Prior Year Cost: 28,988
Future Year Cost: 232,178,536
Total Project Cost: 256,426,601
L RTP: pg.11

FLORIDA'S TURNPIKE

4357861

SIS

Project Description:

Work Summary: ADD LANES & RECONSTRUCT

From: FROM MINNEOLA INTCHG

To: TO LEESBURG NORTH INTCHG (MP279-289.3)(4-6)

Lead Agency: Managed by FDOT

Length: 10.327 mi

No Map Available

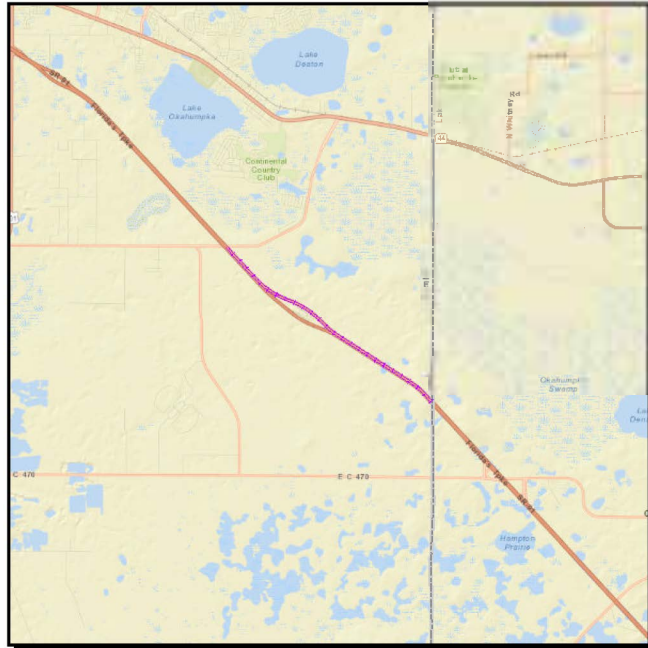
Phase	Fund Source	2019/20	2020/21	2021/22	2022/23	2023/24	Total
ROW	PKYI	250,000	2,185,200	914,400	0	0	3,349,600
PE	PKYI	1,800,000	0	0	0	0	1,800,000
ENV	PKYI	0	1,200,000	0	0	0	1,200,000
CST	PKBD	0	0	254,165,237	0	0	254,165,237
RRU	PKBD	0	0	2,450,000	0	0	2,450,000
CST	PKYI	0	0	0	0	2,650,000	2,650,000
Total		2,050,000	3,385,200	257,529,637	0	2,650,000	265,614,837

Prior Year Cost: 16,162,096
Future Year Cost: 0
Total Project Cost: 281,776,933
LRTP: pg.11

FLORIDA'S TURNPIKE

4357881

SIS



Project Description: WIDEN TURNPIKE FROM LAKE/SUMTER COUNTY LINE TO CR 468 INTERCHANGE (MP 297.9 - 301.4)

Work Summary: ADD LANES & RECONSTRUCT **From:** FROM LAKE/ SUMTER C/L

To: TO CR 468 INTCHG (MP297.9-301.4)(4TO6)

Lead Agency: Managed by FDOT **Length:** 3.436 mi

Phase	Fund Source	2019/20	2020/21	2021/22	2022/23	2023/24	Total
PE	PKYI	0	13,411,020	0	0	0	13,411,020
ENV	PKYI	0	75,000	0	0	0	75,000
ROW	PKYI	0	0	1,980,900	0	0	1,980,900
RRU	PKYI	0	0	0	0	900,000	900,000
Total		0	13,486,020	1,980,900	0	900,000	16,366,920

Prior Year Cost: 13,048
Future Year Cost: 81,715,521
Total Project Cost: 98,095,489
LRTP: pg.11

ITS ARCHITECTURE STUDY

4363651

Non-SIS



Project Description:

Work Summary: ITS COMMUNICATION SYSTEM **From:** COUNTYWIDE

To:

Lead Agency: Sumter County **Length:** .000

Phase	Fund Source	2019/20	2020/21	2021/22	2022/23	2023/24	Total
CST	LF	390,000	0	0	0	0	390,000
CST	CIGP	300,000	0	0	0	0	300,000
Total		690,000	0	0	0	0	690,000

Prior Year Cost: 400,000
Future Year Cost: 0
Total Project Cost: 1,090,000
LRTP: pg.12,58

ROUND LAKE ROAD WIDE & EXTEND

4417101

Non-SIS



Project Description:

Work Summary: NEW ROAD CONSTRUCTION **From:** FROM LAKE/ORANGE COUNTY LINE

To: TO SR 44

Lead Agency: MANAGED BY LAKE COUNTY

Length: 2.560

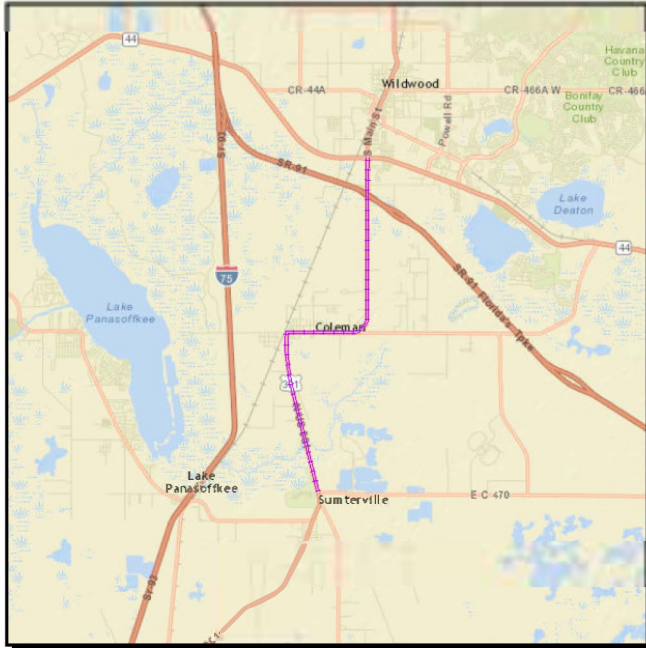
Phase	Fund Source	2019/20	2020/21	2021/22	2022/23	2023/24	Total
PE	TRWR	1,150,000	0	0	0	0	1,150,000
PE	LF	1,150,000	0	0	0	0	1,150,000
Total		2,300,000	0	0	0	0	2,300,000

Prior Year Cost: 0
Future Year Cost: 0
Total Project Cost: 2,300,000

SR 35 (US 301)

4301321

Non-SIS



Project Description:

Work Summary: ADD LANES & REHABILITATE PVMNT **From:** FROM C-470 N

To: TO SR 44

Lead Agency: FDOT

Length: 7.702 mi

Phase	Fund Source	2019/20	2020/21	2021/22	2022/23	2023/24	Total
PE	DDR	0	0	4,821,639	0	0	4,821,639
PE	SN	0	0	479,382	0	0	479,382
PE	SA	0	0	32,636	0	0	32,636
PE	SL	0	0	1,792,364	0	0	1,792,364
Total		0	0	7,126,021	0	0	7,126,021

Prior Year Cost: 3,123,915
Future Year Cost: 0
Total Project Cost: 10,249,936
LRTP: pg.11

SR 429/46 (WEKIVA PKWY)

2382757

SIS



Project Description:

Work Summary: NEW ROAD CONSTRUCTION **From:** FROM W OF OLD MCDONALD RD

To: TO E OF WEKIVA RIVER RD

Lead Agency: Managed by FDOT **Length:** 4.924 mi

Phase	Fund Source	2019/20	2020/21	2021/22	2022/23	2023/24	Total
DSB	DDR	180,952	0	0	0	0	180,952
Total		180,952	0	0	0	0	180,952

Prior Year Cost: 310,286,834
Future Year Cost: 0
Total Project Cost: 310,467,786
LRTP: pg.11

SR 44

4410141

SIS



Project Description:

Work Summary: RESURFACING **From:** FROM NW 68TH BLVD

To: TO END OF RURAL SECTION (.25 MI WEST OF I-75)

Lead Agency: Managed by FDOT **Length:** 8.055

Phase	Fund Source	2019/20	2020/21	2021/22	2022/23	2023/24	Total
CST	DIH	0	10,530	0	0	0	10,530
CST	SA	0	10,384,518	0	0	0	10,384,518
CST	DDR	0	1,914,501	0	0	0	1,914,501
Total		0	12,309,549	0	0	0	12,309,549

Prior Year Cost: 583,937
Future Year Cost: 0
Total Project Cost: 12,893,486

SR 46

2382753

Non-SIS



Project Description: Add Lanes and Reconstruct
From: East of Vista View Lane To: East of Round Lake Road

Work Summary: ADD LANES & RECONSTRUCT **From:** FROM EAST OF VISTA VIEW LANE

To: TO EAST OF ROUND LAKE ROAD

Lead Agency: FDOT **Length:** 1.042 mi

Phase	Fund Source	2019/20	2020/21	2021/22	2022/23	2023/24	Total
CST	DDR	34,654	0	0	0	0	34,654
Total		34,654	0	0	0	0	34,654

Prior Year Cost: 16,415,707

Future Year Cost: 0

Total Project Cost: 16,450,361

LRTP: pg.7,11

SR 46 / US 441

2382752

Non-SIS



Project Description:

Work Summary: ADD LANES & RECONSTRUCT

From: FROM W OF US 441

To: TO E OF VISTA VIEW LANE

Lead Agency: City of Mount Dora

Length: 1.185 mi

Phase	Fund Source	2019/20	2020/21	2021/22	2022/23	2023/24	Total
CST	DDR	72,380	0	0	0	0	72,380
Total		72,380	0	0	0	0	72,380

Prior Year Cost: 55,292,660
Future Year Cost: 0
Total Project Cost: 55,365,040
LRTP: pg.11

SR 500 (US 441)

2383955

Non-SIS



Project Description: WIDEN

Work Summary: ADD LANES & RECONSTRUCT

From: FROM LAKE ELLA RD

To: TO AVENIDA CENTRAL

Lead Agency: FDOT

Length: 4.157 mi

Prior Year Cost: 20,752,958
Future Year Cost: 0
Total Project Cost: 66,544,982
LRTP: pg.11

Phase	Fund Source	2019/20	2020/21	2021/22	2022/23	2023/24	Total
CST	SL	5,250,126	0	0	0	0	5,250,126
CST	GFSL	2,372,272	0	0	0	0	2,372,272
CST	DDR	1,688,748	0	0	0	0	1,688,748
RRU	LF	343,750	0	0	0	0	343,750
CST	GFS A	12,782,211	0	0	0	0	12,782,211
CST	LF	6,250	0	0	0	0	6,250
CST	REPE	6,859,777	0	0	0	0	6,859,777
CST	ACCM	3,374,806	0	0	0	0	3,374,806
CST	CM	466,649	0	0	0	0	466,649
CST	ACSL	6,668,286	0	0	0	0	6,668,286
CST	SA	1,345,460	0	0	0	0	1,345,460
CST	ACSA	4,633,689	0	0	0	0	4,633,689
Total		45,792,024	0	0	0	0	45,792,024

SR 500 (US 441)

4293561

Non-SIS



Project Description: PD&E/EMO STUDY

Work Summary: ADD LANES & REHABILITATE PVMNT

From: FROM SR 44

To: TO NORTH OF SR 46

Lead Agency: FDOT

Length: 2.387 mi

Phase	Fund Source	2019/20	2020/21	2021/22	2022/23	2023/24	Total
ROW	DIH	27,500	27,500	27,400	0	0	82,400
ROW	DDR	320,000	1,240,000	525,000	125,953	0	2,210,953
Total		347,500	1,267,500	552,400	125,953	0	2,293,353

Prior Year Cost: 3,419,577
Future Year Cost: 0
Total Project Cost: 5,712,930
LRTP: pg.11

WIDEN TPK FROM CR470 INTCHG TO LAKE/SUMTER

4357882

SIS



Project Description:

Work Summary: ADD LANES & RECONSTRUCT **From:**

To:

Lead Agency: Managed by FDOT **Length:** .549

Phase	Fund Source	2019/20	2020/21	2021/22	2022/23	2023/24	Total
PE	PKYI	0	1,022,700	0	0	0	1,022,700
Total		0	1,022,700	0	0	0	1,022,700

Prior Year Cost: 1,500
Future Year Cost: 0
Total Project Cost: 1,024,200

Section 3 - Operations and Management

CITRUS TOWER BOULEVARD

4394151

Non-SIS



Project Description:

Work Summary: TRAFFIC SIGNALS **From:** AT MOHAWK ROAD

To:

Lead Agency: MANAGED BY LAKE COUNTY **Length:** 0.026 mi

Phase	Fund Source	2019/20	2020/21	2021/22	2022/23	2023/24	Total
CST	ACSS	246,538	0	0	0	0	246,538
Total		246,538	0	0	0	0	246,538

Prior Year Cost: 47,145
Future Year Cost: 0
Total Project Cost: 293,683
LRTP: pg.11

I-75 (SR 93)

4385623

SIS



Project Description:

Work Summary: REST AREA **From:** AT SUMTER COUNTY SOUTHBOUND REST AREA

To:

Lead Agency: Managed by FDOT **Length:** 0.439 mi

Phase	Fund Source	2019/20	2020/21	2021/22	2022/23	2023/24	Total
CST	DRA	0	17,818,044	0	0	0	17,818,044
CST	DIH	0	52,650	0	0	0	52,650
Total		0	17,870,694	0	0	0	17,870,694

Prior Year Cost: 1,578,446
Future Year Cost: 0
Total Project Cost: 19,449,140
LRTP: N/A

LEESBURG OPERATIONS COMPLEX FCO PROJECTS

4425712

Non-SIS



Project Description:

Work Summary: FIXED CAPITAL OUTLAY **From:**

To:

Lead Agency: Managed by FDOT **Length:** .000

Phase	Fund Source	2019/20	2020/21	2021/22	2022/23	2023/24	Total
CST	FCO	60,250	0	0	0	0	60,250
PE	FCO	6,750	0	0	0	0	6,750
Total		67,000	0	0	0	0	67,000

Prior Year Cost: 0
Future Year Cost: 0
Total Project Cost: 67,000

RESERVE BOX-VILLAGES

4273051

Non-SIS



Project Description:

Work Summary: FUNDING ACTION **From:** (LAKE/SUMTER) OPERATION &
To: SAFETY IMPROVEMENTS

Lead Agency: FDOT

Phase	Fund Source	2019/20	2020/21	2021/22	2022/23	2023/24	Total
CST	LFP	0	415,663	0	0	0	415,663
Total		0	415,663	0	0	0	415,663

Prior Year Cost: 0
Future Year Cost: 0
Total Project Cost: 415,663
LRTP: pg.11

SR 44

4373291

Non-SIS



Project Description:

Work Summary: TRAFFIC OPS IMPROVEMENT **From:** WEST OF US 301

To:

Lead Agency: Managed by FDOT **Length:** 0.445 mi

Phase	Fund Source	2019/20	2020/21	2021/22	2022/23	2023/24	Total
CST	DIH	92,857	0	0	0	0	92,857
CST	DDR	1,489,253	0	0	0	0	1,489,253
Total		1,582,110	0	0	0	0	1,582,110

Prior Year Cost: 156,529
Future Year Cost: 0
Total Project Cost: 1,738,639
LRTP: N/A

TRAFFIC ENGINEERING CONTRACTS

4130193

Non-SIS



Project Description:

Work Summary: TRAFFIC SIGNALS **From:** LAKE COUNTY

To:

Lead Agency: Lake County **Length:** 0.000 mi

Phase	Fund Source	2019/20	2020/21	2021/22	2022/23	2023/24	Total
OPS	DDR	307,605	0	0	0	0	307,605
Total		307,605	0	0	0	0	307,605

Prior Year Cost: 3,926,706
Future Year Cost: 0
Total Project Cost: 4,234,311
LRTP: pg.11

TRAFFIC ENGINEERING CONTRACTS

4130198

Non-SIS

Project Description:

Work Summary: TRAFFIC SIGNALS **From:** SUMTER COUNTY

To:

Lead Agency: FDOT **Length:** 0.000 mi

No Map Available

Phase	Fund Source	2019/20	2020/21	2021/22	2022/23	2023/24	Total
OPS	DDR	62,253	0	0	0	0	62,253
Total		62,253	0	0	0	0	62,253

Prior Year Cost: 766,789
Future Year Cost: 0
Total Project Cost: 829,042
LRTP: pg.11

WEKIVA TOLL FACILITIES MAINTENANCE

4391681

Non-SIS



Project Description:

Work Summary: TOLL PLAZA **From:**

To:

Lead Agency: Managed by FDOT **Length:** .000

Phase	Fund Source	2019/20	2020/21	2021/22	2022/23	2023/24	Total
MNT	TMBW	5,016	5,016	5,016	5,016	5,016	25,080
Total		5,016	5,016	5,016	5,016	5,016	25,080

Prior Year Cost: 14,224
Future Year Cost: 0
Total Project Cost: 39,304

Section 4A - Safety - Resurfacing

C-478

4392231

Non-SIS



Project Description:

Work Summary: RESURFACING **From:** FROM SR 471
To: TO CENTER HILL CITY LIMITS

Lead Agency: Sumter County **Length:** 5.568 mi

Phase	Fund Source	2019/20	2020/21	2021/22	2022/23	2023/24	Total
CST	SCED	0	512,821	0	0	0	512,821
CST	SCOP	0	489,809	0	0	0	489,809
CST	SCWR	0	532,191	0	0	0	532,191
CST	GRSC	0	215,179	0	0	0	215,179
Total		0	1,750,000	0	0	0	1,750,000

Prior Year Cost: 250,774
Future Year Cost: 0
Total Project Cost: 2,000,774
LRTP: pg. 10, 11

CR 42

4413642

Non-SIS

No Map Available

Project Description:

Work Summary: SAFETY PROJECT **From:** FROM SR 44
To: TO MARION COUNTY
Lead Agency: MANAGED BY LAKE COUNTY **Length:** 19.284

Phase	Fund Source	2019/20	2020/21	2021/22	2022/23	2023/24	Total
CST	ACSS	0	1,669,223	0	0	0	1,669,223
Total		0	1,669,223	0	0	0	1,669,223

Prior Year Cost: 0
Future Year Cost: 0
Total Project Cost: 1,669,223

CR 452 FROM CR 44 TO LAKE / MARION COUNTY LINE

4435111

Non-SIS



Project Description:

Work Summary: SAFETY PROJECT **From:**

To:

Lead Agency: MANAGED BY LAKE COUNTY **Length:** 9.268

Phase	Fund Source	2019/20	2020/21	2021/22	2022/23	2023/24	Total
PE	ACSS	605,000	0	0	0	0	605,000
CST	ACSS	0	0	2,232,000	0	0	2,232,000
Total		605,000	0	2,232,000	0	0	2,837,000

Prior Year Cost: 0
Future Year Cost: 0
Total Project Cost: 2,837,000

FLORIDA'S TURNPIKE

4402951

SIS

Project Description:

Work Summary: RESURFACING **From:** LAKE COUNTY MP 288.7-297.9
SOUTHBOUND ONLY

To:

Lead Agency: Managed by FDOT **Length:** 9.376 mi

No Map
Available

Phase	Fund Source	2019/20	2020/21	2021/22	2022/23	2023/24	Total
PE	PKYR	1,344,419	0	0	0	0	1,344,419
CST	PKYR	0	0	12,423,555	0	0	12,423,555
Total		1,344,419	0	12,423,555	0	0	13,767,974

Prior Year Cost: 9,084
Future Year Cost: 0
Total Project Cost: 13,777,058
LRTP: pg. 10, 11

FLORIDA'S TURNPIKE

4402941

SIS



Project Description:

Work Summary: RESURFACING **From:** FROM MP 279.0

To: TO MP 287.7

Lead Agency: Managed by FDOT **Length:** 8.700 mi

Phase	Fund Source	2019/20	2020/21	2021/22	2022/23	2023/24	Total
CST	PKYR	21,702,853	0	0	0	0	21,702,853
Total		21,702,853	0	0	0	0	21,702,853

Prior Year Cost: 2,153,801
Future Year Cost: 0
Total Project Cost: 23,856,654
LRTP: pg. 10, 11

LAKE ELLA ROAD FROM NE 90TH ST TO SR 25 / SR 500 (US 27 / US

4435081

Non-SIS



Project Description:

Work Summary: SAFETY PROJECT **From:**

To:

Lead Agency: MANAGED BY LAKE COUNTY

Length: 2.957

Phase	Fund Source	2019/20	2020/21	2021/22	2022/23	2023/24	Total
PE	ACSS	135,000	0	0	0	0	135,000
CST	ACSS	0	0	409,180	0	0	409,180
Total		135,000	0	409,180	0	0	544,180

Prior Year Cost: 0
Future Year Cost: 0
Total Project Cost: 544,180

SAFETY IMPROVEMENTS FOR TPK MAINLINE IN SUMTER CNTY (MP 4417172

SIS



Project Description:

Work Summary: SAFETY PROJECT **From:**

To:

Lead Agency: Managed by FDOT **Length:** 10.670

Phase	Fund Source	2019/20	2020/21	2021/22	2022/23	2023/24	Total
CST	PKYR	0	1,725,934	0	0	0	1,725,934
Total		0	1,725,934	0	0	0	1,725,934

Prior Year Cost: 387,208
Future Year Cost: 0
Total Project Cost: 2,113,142

SR 19

4411351

Non-SIS

No Map
Available

Project Description:

Work Summary: RESURFACING **From:** FROM CR 452
To: TO GOLDEN GEM DR, SOUTH OF UMATILLA
Lead Agency: Managed by FDOT **Length:** 3.816

Phase	Fund Source	2019/20	2020/21	2021/22	2022/23	2023/24	Total
CST	DS	0	5,772,187	0	0	0	5,772,187
CST	DIH	0	10,530	0	0	0	10,530
CST	DDR	0	479,115	0	0	0	479,115
Total		0	6,261,832	0	0	0	6,261,832

Prior Year Cost: 1,452,880
Future Year Cost: 0
Total Project Cost: 7,714,712

SR 19 (BAY STREET)

4391381

Non-SIS

Project Description:

Work Summary: RESURFACING **From:** FROM W NORTON AVE
To: TO LAKE SAUNDERS DR
Lead Agency: Managed by FDOT **Length:** 1.699 mi

No Map Available

Phase	Fund Source	2019/20	2020/21	2021/22	2022/23	2023/24	Total
CST	DS	443,014	0	0	0	0	443,014
CST	DIH	5,130	0	0	0	0	5,130
CST	DDR	3,534,996	0	0	0	0	3,534,996
Total		3,983,140	0	0	0	0	3,983,140

Prior Year Cost: 404,519
Future Year Cost: 0
Total Project Cost: 4,387,659
LRTP: pg. 10, 11

SR 19 FROM BURRELL RD TO MEBANE ST

4435101

Non-SIS



Project Description:

Work Summary: SAFETY PROJECT **From:**

To:

Lead Agency: Managed by FDOT **Length:** 3.063

Phase	Fund Source	2019/20	2020/21	2021/22	2022/23	2023/24	Total
PE	ACSS	755,000	0	0	0	0	755,000
CST	ACSS	0	0	3,548,528	0	0	3,548,528
Total		755,000	0	3,548,528	0	0	4,303,528

Prior Year Cost: 0
Future Year Cost: 0
Total Project Cost: 4,303,528

SR 19/S CENTRAL AVE

4379381

Non-SIS



Project Description:

Work Summary: RESURFACING **From:** FROM N OF CR 450A
To: TO S OF CR 450/W OCALA STREET

Lead Agency: Managed by FDOT **Length:** 1.090 mi

Phase	Fund Source	2019/20	2020/21	2021/22	2022/23	2023/24	Total
CST	DIH	5,130	0	0	0	0	5,130
CST	DDR	2,258,949	0	0	0	0	2,258,949
Total		2,264,079	0	0	0	0	2,264,079

Prior Year Cost: 152,378
Future Year Cost: 0
Total Project Cost: 2,416,457
LRTP: N/A

SR 25

4391391

Non-SIS



Project Description:

Work Summary: RESURFACING **From:** FROM ARLINGTON RIDGE BLVD

To: TO CR 33

Lead Agency: Managed by FDOT **Length:** 1.633 mi

Phase	Fund Source	2019/20	2020/21	2021/22	2022/23	2023/24	Total
CST	DIH	5,130	0	0	0	0	5,130
CST	SA	2,705,901	0	0	0	0	2,705,901
CST	DDR	1,476,230	0	0	0	0	1,476,230
CST	NHRE	693,023	0	0	0	0	693,023
Total		4,880,284	0	0	0	0	4,880,284

Prior Year Cost: 712,689
Future Year Cost: 0
Total Project Cost: 5,592,973
LRTP: pg. 10, 11

SR 44 FROM EAST OF BRITT ROAD TO EAST OF VALLEY HILL LANE 4391421

Non-SIS



Project Description:

Work Summary: RESURFACING **From:**

To:

Lead Agency: Managed by FDOT **Length:** 4.555

Phase	Fund Source	2019/20	2020/21	2021/22	2022/23	2023/24	Total
CST	DS	0	0	167,902	0	0	167,902
CST	DIH	0	0	10,810	0	0	10,810
CST	DDR	0	0	3,462,053	0	0	3,462,053
Total		0	0	3,640,765	0	0	3,640,765

Prior Year Cost: 815,041
Future Year Cost: 0
Total Project Cost: 4,455,806

SR 44 SOUTH OF LAKESHORE BLVD TO NORTH OF LAKESHORE

4435071

Non-SIS



Project Description:

Work Summary: SAFETY PROJECT **From:**

To:

Lead Agency: Managed by FDOT **Length:** .272

Phase	Fund Source	2019/20	2020/21	2021/22	2022/23	2023/24	Total
PE	ACSS	305,000	0	0	0	0	305,000
CST	ACSS	0	0	903,073	0	0	903,073
Total		305,000	0	903,073	0	0	1,208,073

Prior Year Cost: 10,000
Future Year Cost: 0
Total Project Cost: 1,218,073

SR 44/SOUTH STREET

4411371

Non-SIS



Project Description:

Work Summary: RESURFACING **From:** FROM BOTTLE BRUSH COURT

To: TO US 27 (S 14TH STREET)

Lead Agency: Managed by FDOT **Length:** 1.093

Phase	Fund Source	2019/20	2020/21	2021/22	2022/23	2023/24	Total
CST	DIH	0	10,530	0	0	0	10,530
CST	DDR	0	2,619,713	0	0	0	2,619,713
Total		0	2,630,243	0	0	0	2,630,243

Prior Year Cost: 813,000
Future Year Cost: 0
Total Project Cost: 3,443,243

US 441 FROM GRIFFIN RD TO MLK BLVD

4435461

Non-SIS



Project Description:

Work Summary: SAFETY PROJECT **From:**

To:

Lead Agency: Managed by FDOT **Length:** 1.188

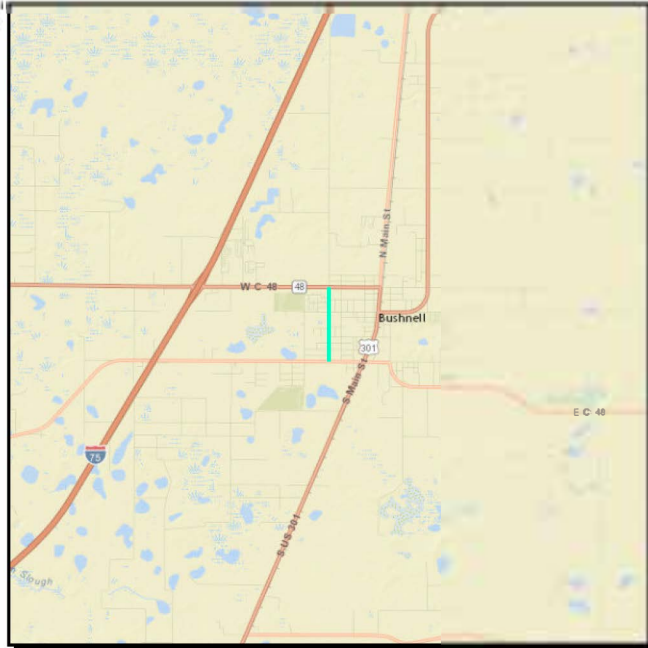
Phase	Fund Source	2019/20	2020/21	2021/22	2022/23	2023/24	Total
PE	ACSS	705,000	0	0	0	0	705,000
CST	ACSS	0	0	5,907,534	0	0	5,907,534
Total		705,000	0	5,907,534	0	0	6,612,534

Prior Year Cost: 10,000
Future Year Cost: 0
Total Project Cost: 6,622,534

WEST STREET

4354931

Non-SIS



Project Description:

Work Summary: RESURFACING **From:** FROM SR 48

To: TO CR 476

Lead Agency: Sumter County **Length:** 0.753 mi

Phase	Fund Source	2019/20	2020/21	2021/22	2022/23	2023/24	Total
CST	LFP	98,500	0	0	0	0	98,500
CST	CIGP	98,500	0	0	0	0	98,500
Total		197,000	0	0	0	0	197,000

Prior Year Cost: 0
Future Year Cost: 0
Total Project Cost: 197,000
LRTP: pg.10,11

Section 4B - Safety - Lighting

CR 478

4399121

Non-SIS

Project Description:

Work Summary: SAFETY PROJECT **From:** FROM 734
To: TO CITY OF CENTER HILL SOUTHERN LIMIT
Lead Agency: MANAGED BY SUMTER COUNTY **Length:** 9.260 mi

No Map Available

Phase	Fund Source	2019/20	2020/21	2021/22	2022/23	2023/24	Total
CST	ACSS	992,377	0	0	0	0	992,377
Total		992,377	0	0	0	0	992,377

Prior Year Cost: 195,065
Future Year Cost: 0
Total Project Cost: 1,187,442
L RTP: pg. 11, 22, 23, 24

LAKE LOUISA ROAD

4397021

Non-SIS



Project Description:

Work Summary: SAFETY PROJECT **From:** FROM NW OF GLEASON WAY

To: TO SOUTH OF HAMMOCK RIDGE ROAD

Lead Agency: MANAGED BY LAKE COUNTY **Length:** 3.290 mi

Phase	Fund Source	2019/20	2020/21	2021/22	2022/23	2023/24	Total
CST	ACSS	343,379	0	0	0	0	343,379
Total		343,379	0	0	0	0	343,379

Prior Year Cost: 167,200
Future Year Cost: 0
Total Project Cost: 510,579
L RTP: pg. 11, 22, 23, 24

LAKESHORE DRIVE

4397011

Non-SIS

Project Description:

Work Summary: SAFETY PROJECT **From:** FROM HULL DRIVE
To: TO CRESCENT PINES BLVD

Lead Agency: MANAGED BY LAKE COUNTY **Length:** 0.800 mi

No Map Available

Phase	Fund Source	2019/20	2020/21	2021/22	2022/23	2023/24	Total
CST	ACSS	502,599	0	0	0	0	502,599
Total		502,599	0	0	0	0	502,599

Prior Year Cost: 193,400
Future Year Cost: 0
Total Project Cost: 695,999
L RTP: pg. 11,22,23,24

LIGHTING AGREEMENTS

4136152

Non-SIS



Project Description:

Work Summary: LIGHTING

From:

To:

Lead Agency: FDOT

Length: 0.000 mi

Phase	Fund Source	2019/20	2020/21	2021/22	2022/23	2023/24	Total
MNT	D	37,761	38,894	40,061	41,263	42,500	200,479
Total		37,761	38,894	40,061	41,263	42,500	200,479

Prior Year Cost: 398,947
Future Year Cost: 0
Total Project Cost: 599,426
LRTP: pg.11,22,23,24

LIGHTING AGREEMENTS

4136151

Non-SIS



Project Description:

Work Summary: LIGHTING

From:

To:

Lead Agency: FDOT

Length: 0.000 mi

Phase	Fund Source	2019/20	2020/21	2021/22	2022/23	2023/24	Total
MNT	D	346,139	356,522	367,215	378,228	389,572	1,837,676
Total		346,139	356,522	367,215	378,228	389,572	1,837,676

Prior Year Cost: 3,204,507
Future Year Cost: 0
Total Project Cost: 5,042,183
LRTP: pg.11,22,23,24

Section 4C - Safety - Guardrail

FLORIDA'S TURNPIKE

4402952

SIS



Project Description:

Work Summary: GUARDRAIL **From:** MAINLINE LAKE CNTY
MP288.7-297.7 S/B ONLY

To:

Lead Agency: Managed by FDOT **Length:** 9.376 mi

Phase	Fund Source	2019/20	2020/21	2021/22	2022/23	2023/24	Total
CST	PKYR	0	0	1,449,434	0	0	1,449,434
Total		0	0	1,449,434	0	0	1,449,434

Prior Year Cost: 338,772
Future Year Cost: 0
Total Project Cost: 1,788,206
LRTP: pg. 10

FLORIDA'S TURNPIKE

4402942

SIS

Project Description:

Work Summary: GUARDRAIL **From:** FROM MP 279.0

To: TO MP 287.7

Lead Agency: Managed by FDOT **Length:** 8.700 mi

No Map Available

Phase	Fund Source	2019/20	2020/21	2021/22	2022/23	2023/24	Total
CST	PKYR	1,434,075	0	0	0	0	1,434,075
Total		1,434,075	0	0	0	0	1,434,075

Prior Year Cost: 297,817
Future Year Cost: 0
Total Project Cost: 1,731,892
LRTP: pg.10

Section 4D - Safety - Signing and Pavement Markings

FLORIDA'S TURNPIKE

4061103

SIS



Project Description:

Work Summary: SIGNING/PAVEMENT MARKINGS **From:** THERMOPLASTIC FOR I-75/TPK INTCHG MODIF. (NORTHERN

To:

Lead Agency: Managed by FDOT **Length:** 0.270 mi

Phase	Fund Source	2019/20	2020/21	2021/22	2022/23	2023/24	Total
CST	PKYI	316,386	0	0	0	0	316,386
Total		316,386	0	0	0	0	316,386

Prior Year Cost: 50,131
Future Year Cost: 0
Total Project Cost: 366,517
LRTP: pg. 10

Section 5A - Maintenance Bridges

BAILEY RD BRIDGE REPLACEMENT OVER TPK (SR91) IN SUMTER

4439901

SIS



Project Description:

Work Summary: BRIDGE REPLACEMENT **From:**

To:

Lead Agency: Managed by FDOT

Length: .004

Phase	Fund Source	2019/20	2020/21	2021/22	2022/23	2023/24	Total
CST	PKYR	0	1,426,052	0	0	0	1,426,052
Total		0	1,426,052	0	0	0	1,426,052

Prior Year Cost: 2,117
Future Year Cost: 0
Total Project Cost: 1,428,169

SR 44 BRIDGE# 110063

4295561

Non-SIS



Project Description: SR 44 OVER ST JOHNS RIVER - BRIDGE# 110063

Work Summary: BRIDGE REPLACEMENT **From:**

To:

Lead Agency: Lake County

Length: 0.099 mi

Phase	Fund Source	2019/20	2020/21	2021/22	2022/23	2023/24	Total
ROW	ACBR	1,010,000	357,850	317,130	0	0	1,684,980
ROW	DIH	20,000	0	0	0	0	20,000
CST	DDR	669,271	0	0	0	0	669,271
CST	ACBR	29,274,651	0	0	0	0	29,274,651
Total		30,973,922	357,850	317,130	0	0	31,648,902

Prior Year Cost: 5,809,849

Future Year Cost: 0

Total Project Cost: 37,458,751

L RTP: pg.10,11

Section 5B - Maintenance Drainage

LEESBURG-LAKE HARRIS REGIONAL POND

2383193

Non-SIS

Project Description:

Work Summary: ROUTINE MAINTENANCE **From:**

To:

Lead Agency: Managed by FDOT **Length:** .000

No Map Available

Phase	Fund Source	2019/20	2020/21	2021/22	2022/23	2023/24	Total
MNT	LF	424,500	0	0	0	0	424,500
MNT	D	1,200,000	0	0	0	0	1,200,000
Total		1,624,500	0	0	0	0	1,624,500

Prior Year Cost: 0
Future Year Cost: 0
Total Project Cost: 1,624,500

Section 5C - Maintenance Landscaping

CR 46A

4371145

Non-SIS



Project Description:

Work Summary: LANDSCAPING
From: FROM SR 46
To: TO N OF ARUNDEL WAY
Lead Agency: Managed by FDOT
Length: 4.705 mi

Phase	Fund Source	2019/20	2020/21	2021/22	2022/23	2023/24	Total
CST	ACSN	10,260	0	0	0	0	10,260
CST	SL	10,260	0	0	0	0	10,260
CST	SN	548,538	0	0	0	0	548,538
Total		569,058	0	0	0	0	569,058

Prior Year Cost: 88,163
Future Year Cost: 0
Total Project Cost: 657,221
LRTP: pg.10,11

SR 46

4371141

Non-SIS



Project Description:

Work Summary: LANDSCAPING **From:** FROM EAST OF VISTA VIEW LANE

To: TO EAST OF ROUND LAKE ROAD

Lead Agency: Managed by FDOT **Length:** 2.144 mi

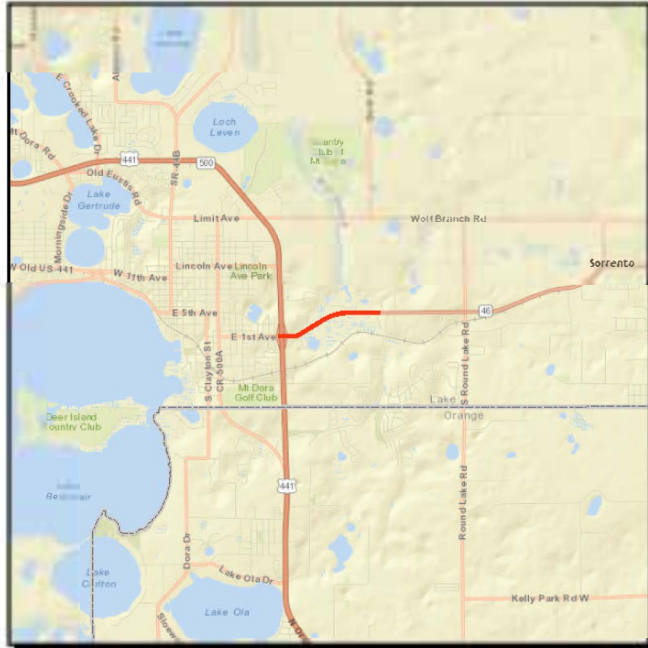
Phase	Fund Source	2019/20	2020/21	2021/22	2022/23	2023/24	Total
CST	DIH	0	26,784	0	0	0	26,784
CST	DDR	0	275,306	0	0	0	275,306
Total		0	302,090	0	0	0	302,090

Prior Year Cost: 20,000
Future Year Cost: 0
Total Project Cost: 322,090
LRTP: pg.10,11

SR 46

4371142

Non-SIS



Project Description:

Work Summary: LANDSCAPING
From: FROM WEST OF US 441
To: TO EAST OF VISTA VIEW LANE
Lead Agency: Managed by FDOT
Length: 2.285 mi

Phase	Fund Source	2019/20	2020/21	2021/22	2022/23	2023/24	Total
CST	DIH	0	78,070	0	0	0	78,070
CST	DDR	0	890,506	0	0	0	890,506
Total		0	968,576	0	0	0	968,576

Prior Year Cost: 33,545
Future Year Cost: 0
Total Project Cost: 1,002,121
LRTP: pg.10,11

SR 46/SR 429

4371146

SIS



Project Description:

Work Summary: LANDSCAPING **From:** FROM SR 46
To: TO WEKIVA RIVER RD
Lead Agency: Managed by FDOT **Length:** 4.924 mi

Phase	Fund Source	2019/20	2020/21	2021/22	2022/23	2023/24	Total
PE	DDR	25,000	0	0	0	0	25,000
CST	DS	0	0	10,810	0	0	10,810
CST	DIH	0	0	21,620	0	0	21,620
CST	SL	0	0	1,224,106	0	0	1,224,106
CST	SN	0	0	1,176,436	0	0	1,176,436
CST	DDR	0	0	36,897	0	0	36,897
Total		25,000	0	2,469,869	0	0	2,494,869

Prior Year Cost: 5,000
Future Year Cost: 0
Total Project Cost: 2,499,869
L RTP: pg.10,11

SR 500 / US 441 FROM SLEEPY HOLLOW RD TO AIRPORT VIEW

4449271

Non-SIS



Project Description:

Work Summary: LANDSCAPING **From:**

To:

Lead Agency: MANAGED BY CITY OF LEESBURG **Length:** 1.114

Phase	Fund Source	2019/20	2020/21	2021/22	2022/23	2023/24	Total
CST	DDR	0	350,000	0	0	0	350,000
Total		0	350,000	0	0	0	350,000

Prior Year Cost: 0
Future Year Cost: 0
Total Project Cost: 350,000

ASPHALT REPAIR

4291571

Non-SIS



Project Description:

Work Summary: ROUTINE MAINTENANCE **From:**

To:

Lead Agency: FDOT

Phase	Fund Source	2019/20	2020/21	2021/22	2022/23	2023/24	Total
MNT	D	307,400	0	0	0	0	307,400
Total		307,400	0	0	0	0	307,400

Prior Year Cost: 5,469,036
Future Year Cost: 0
Total Project Cost: 5,776,436
LRTP: pg.10,11

CITY OF LEESBURG MOA

4231131

Non-SIS

Project Description:

Work Summary: ROUTINE MAINTENANCE **From:**

To:

Lead Agency: FDOT

No Map Available

Phase	Fund Source	2019/20	2020/21	2021/22	2022/23	2023/24	Total
MNT	D	132,056	132,056	132,056	132,056	132,056	660,280
Total		132,056	132,056	132,056	132,056	132,056	660,280

Prior Year Cost: 107,187
Future Year Cost: 0
Total Project Cost: 767,467
LRTP: pg.10,11

DRAINAGE REPAIR

4291762

Non-SIS



Project Description:

Work Summary: ROUTINE MAINTENANCE **From:**

To:

Lead Agency: FDOT

Phase	Fund Source	2019/20	2020/21	2021/22	2022/23	2023/24	Total
MNT	D	1,219,835	0	0	0	0	1,219,835
Total		1,219,835	0	0	0	0	1,219,835

Prior Year Cost: 3,091,108
Future Year Cost: 0
Total Project Cost: 4,310,943
LRTP: pg.10,11

LADY LAKE

4171991

Non-SIS



Project Description:

Work Summary: ROUTINE MAINTENANCE **From:** MEMORANDUM OF AGREEMENT

To:

Lead Agency: FDOT

Phase	Fund Source	2019/20	2020/21	2021/22	2022/23	2023/24	Total
MNT	D	21,505	21,505	21,505	21,505	21,505	107,525
Total		21,505	21,505	21,505	21,505	21,505	107,525

Prior Year Cost: 339,939
Future Year Cost: 0
Total Project Cost: 447,464
LRTP: pg.10,11

LAKE PRIMARY

4181061

Non-SIS



Project Description:

Work Summary: ROUTINE MAINTENANCE **From:** IN-HOUSE

To:

Lead Agency: FDOT

Phase	Fund Source	2019/20	2020/21	2021/22	2022/23	2023/24	Total
MNT	D	1,704,791	1,763,811	1,763,811	1,763,811	1,733,811	8,730,035
Total		1,704,791	1,763,811	1,763,811	1,763,811	1,733,811	8,730,035

Prior Year Cost: 34,841,561
Future Year Cost: 0
Total Project Cost: 43,571,596
LRTP: pg.10,11

LEESBURG OPERATIONS COMPLEX CONTRACTED SERVICES

4425711

Non-SIS



Project Description:

Work Summary: FIXED CAPITAL OUTLAY **From:**

To:

Lead Agency: Managed by FDOT

Length: .000

Phase	Fund Source	2019/20	2020/21	2021/22	2022/23	2023/24	Total
MNT	D	3,000	0	0	0	0	3,000
Total		3,000	0	0	0	0	3,000

Prior Year Cost: 57,374
Future Year Cost: 0
Total Project Cost: 60,374

MOA W/ MASCOTTE

4237901

Non-SIS



Project Description:

Work Summary: ROUTINE MAINTENANCE **From:**

To:

Lead Agency: FDOT

Phase	Fund Source	2019/20	2020/21	2021/22	2022/23	2023/24	Total
MNT	D	7,520	7,520	7,520	7,520	7,520	37,600
Total		7,520	7,520	7,520	7,520	7,520	37,600

Prior Year Cost: 37,937
Future Year Cost: 0
Total Project Cost: 75,537
LRTP: pg.10,11

MOA W/ TAVARES

4254581

Non-SIS



Project Description:

Work Summary: ROUTINE MAINTENANCE **From:**

To:

Lead Agency: FDOT

Phase	Fund Source	2019/20	2020/21	2021/22	2022/23	2023/24	Total
MNT	D	33,057	33,057	33,057	33,057	33,057	165,285
Total		33,057	33,057	33,057	33,057	33,057	165,285

Prior Year Cost: 35,391
Future Year Cost: 0
Total Project Cost: 200,676
LRTP: pg.10,11

MOA W/WILDWOOD

4271941

Non-SIS



Project Description:

Work Summary: ROUTINE MAINTENANCE **From:**

To:

Lead Agency: FDOT **Length:** 0.000 mi

Phase	Fund Source	2019/20	2020/21	2021/22	2022/23	2023/24	Total
MNT	D	13,441	13,441	13,441	13,441	13,441	67,205
Total		13,441	13,441	13,441	13,441	13,441	67,205

Prior Year Cost: 85,819
Future Year Cost: 0
Total Project Cost: 153,024
LRTP: pg.10,11

RECONSTRUCT TPK MAINLINE SUMTER CNTY (MP 297.9 - 308.9)

4417171

SIS



Project Description:

Work Summary: FLEXIBLE PAVEMENT RECONSTRUCT. **From:**

To:

Lead Agency: Managed by FDOT **Length:** 10.670

Phase	Fund Source	2019/20	2020/21	2021/22	2022/23	2023/24	Total
PE	PKYR	3,680,207	0	0	0	0	3,680,207
CST	PKYR	0	25,262,200	0	0	0	25,262,200
Total		3,680,207	25,262,200	0	0	0	28,942,407

Prior Year Cost: 37,935
Future Year Cost: 0
Total Project Cost: 28,980,342

SHOULDER AND/OR DITCH REPAIRS

4439991

Non-SIS



Project Description:

Work Summary: ROUTINE MAINTENANCE **From:**

To:

Lead Agency: Managed by FDOT **Length:** .000

Phase	Fund Source	2019/20	2020/21	2021/22	2022/23	2023/24	Total
MNT	D	750,000	0	0	0	0	750,000
Total		750,000	0	0	0	0	750,000

Prior Year Cost: 0
Future Year Cost: 0
Total Project Cost: 750,000

SR 44 / MAIN ST / SR 500 FROM 750' E OF SR 44 TO 535' S OF

4435921

Non-SIS



Project Description:

Work Summary: RESURFACING **From:**

To:

Lead Agency: Managed by FDOT **Length:** 1.730

Phase	Fund Source	2019/20	2020/21	2021/22	2022/23	2023/24	Total
PE	DIH	10,000	0	0	0	0	10,000
PE	DDR	560,000	0	0	0	0	560,000
CST	DIH	0	0	10,810	0	0	10,810
CST	DDR	0	0	5,174,173	0	0	5,174,173
Total		570,000	0	5,184,983	0	0	5,754,983

Prior Year Cost: 10,000
Future Year Cost: 0
Total Project Cost: 5,764,983

SR 44 FROM EAST OF SR 35/MAIN STREET TO LAKE CO LINE

4428751

Non-SIS



Project Description:

Work Summary: RESURFACING **From:**

To:

Lead Agency: Managed by FDOT **Length:** 6.008

Phase	Fund Source	2019/20	2020/21	2021/22	2022/23	2023/24	Total
PE	DIH	10,000	0	0	0	0	10,000
PE	DDR	854,000	0	0	0	0	854,000
CST	DIH	0	0	10,810	0	0	10,810
CST	SA	0	0	14,061,037	0	0	14,061,037
CST	DDR	0	0	1,498,715	0	0	1,498,715
Total		864,000	0	15,570,562	0	0	16,434,562

Prior Year Cost: 7,500
Future Year Cost: 0
Total Project Cost: 16,442,062

SR 46 FROM .35 MILES W OF SWAN RD TO HOJIN ST

4429101

Non-SIS



Project Description:

Work Summary: RESURFACING **From:**

To:

Lead Agency: Managed by FDOT **Length:** 3.546

Phase	Fund Source	2019/20	2020/21	2021/22	2022/23	2023/24	Total
CST	DIH	0	10,530	0	0	0	10,530
CST	DDR	0	3,013,466	0	0	0	3,013,466
Total		0	3,023,996	0	0	0	3,023,996

Prior Year Cost: 435,000
Future Year Cost: 0
Total Project Cost: 3,458,996

SUMTER PRIMARY

4181111

Non-SIS

Project Description:

Work Summary: ROUTINE MAINTENANCE **From:** IN-HOUSE

To:

Lead Agency: FDOT **Length:** 0.000 mi

No Map Available

Phase	Fund Source	2019/20	2020/21	2021/22	2022/23	2023/24	Total
MNT	D	354,283	361,211	361,211	361,211	361,211	1,799,127
Total		354,283	361,211	361,211	361,211	361,211	1,799,127

Prior Year Cost: 3,264,109
Future Year Cost: 0
Total Project Cost: 5,063,236
LRTP: pg.10,11

VEGETATION AND

2447543

Non-SIS

No Map Available

Project Description:

Work Summary: ROUTINE MAINTENANCE **From:** AESTHETICS

To: AREA WIDE

Lead Agency: FDOT

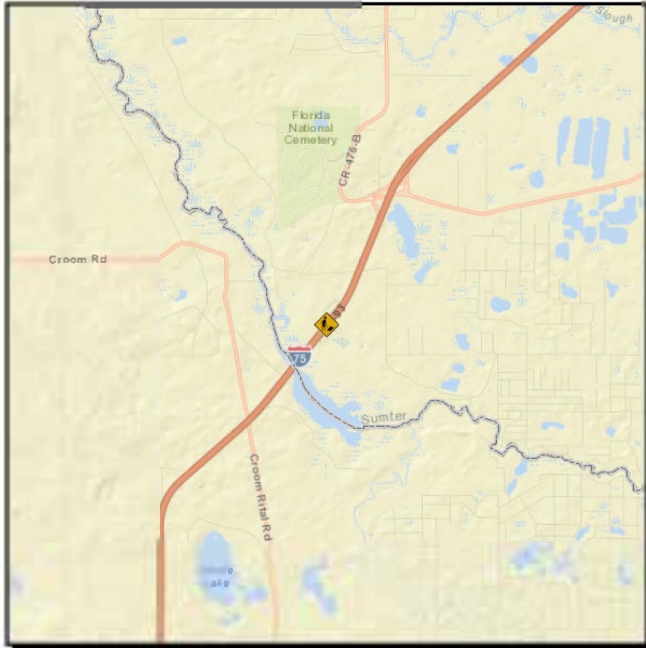
Phase	Fund Source	2019/20	2020/21	2021/22	2022/23	2023/24	Total
MNT	D	1,924,523	1,924,523	1,924,523	1,924,523	1,443,392	9,141,484
Total		1,924,523	1,924,523	1,924,523	1,924,523	1,443,392	9,141,484

Prior Year Cost: 12,774,893
Future Year Cost: 0
Total Project Cost: 21,916,377
LRTP: pg.10,11

I-75 (SR 93) SUMTER CO REST AREA

4385622

SIS



Project Description:

Work Summary: REST AREA **From:** FROM N OF SR 50

To: TO S OF CR 476B

Lead Agency: Managed by FDOT **Length:** 0.439 mi

Phase	Fund Source	2019/20	2020/21	2021/22	2022/23	2023/24	Total
CST	DRA	0	0	0	0	19,726,182	19,726,182
CST	DIH	0	0	0	0	57,200	57,200
Total		0	0	0	0	19,783,382	19,783,382

Prior Year Cost: 1,397,225
Future Year Cost: 0
Total Project Cost: 21,180,607
LRTP: PG. 10, 11

Section 6 - Bicycle/Pedestrian & Trails

CR 473

4394931

Non-SIS



Project Description:

Work Summary: SIDEWALK **From:** FROM FOUNTAIN LAKE BLVD

To: TO HAINES CREEK ROAD/TREADWAY ELEM

Lead Agency: MANAGED BY LAKE COUNTY **Length:** 1.380 mi

Phase	Fund Source	2019/20	2020/21	2021/22	2022/23	2023/24	Total
CST	SR2T	864,138	0	0	0	0	864,138
Total		864,138	0	0	0	0	864,138

Prior Year Cost: 151,625
Future Year Cost: 0
Total Project Cost: 1,015,763
LRTP: pg. 11

CR44 BYPASS-(EUSTIS MIDDLE SCH)

4396861

Non-SIS

Project Description:

Work Summary: SIDEWALK **From:** FROM E ORANGE AVE
To: TO CYPRESS GROVE DR

Lead Agency: MANAGED BY LAKE COUNTY **Length:** 1.119 mi

No Map Available

Phase	Fund Source	2019/20	2020/21	2021/22	2022/23	2023/24	Total
PE	TALL	0	76,460	0	0	0	76,460
Total		0	76,460	0	0	0	76,460

Prior Year Cost: 0
Future Year Cost: 0
Total Project Cost: 76,460

CR561/MONROE ST (ASTATULA ELEM SCH)

4396851

Non-SIS

Project Description:

Work Summary: SIDEWALK **From:** FROM TENNESSEE AVE

To: TO CR48/FL AVE

Lead Agency: MANAGED BY LAKE COUNTY **Length:** 0.376 mi

No Map Available

Phase	Fund Source	2019/20	2020/21	2021/22	2022/23	2023/24	Total
PE	TALL	0	52,670	0	0	0	52,670
Total		0	52,670	0	0	0	52,670

Prior Year Cost: 0
 Future Year Cost: 0
 Total Project Cost: 52,670
 LRTP: pg.11

EAST ORANGE AVENUE

4390481

Non-SIS



Project Description:

Work Summary: SIDEWALK **From:** FROM FRUITWOOD AVENUE

To: TO SUNRISE LANE

Lead Agency: MANAGED BY LAKE COUNTY **Length:** 0.000 mi

Phase	Fund Source	2019/20	2020/21	2021/22	2022/23	2023/24	Total
PE	TALT	0	175,900	0	0	0	175,900
PE	TALL	0	3,000	0	0	0	3,000
Total		0	178,900	0	0	0	178,900

Prior Year Cost: 0
Future Year Cost: 0
Total Project Cost: 178,900
LRTP: pg. 11

HANCOCK RD (LOST LAKE ELEM SCHL)

4396631

Non-SIS

Project Description:

Work Summary: SIDEWALK **From:** FROM SUNBURST LANE

To: TO GREATER PINES BLV

Lead Agency: MANAGED BY LAKE COUNTY **Length:** 0.839 mi

No Map Available

Phase	Fund Source	2019/20	2020/21	2021/22	2022/23	2023/24	Total
PE	TALL	0	161,610	0	0	0	161,610
Total		0	161,610	0	0	0	161,610

Prior Year Cost: 0
Future Year Cost: 0
Total Project Cost: 161,610
LRTP: pg.11

LAKE-WEKIVA TRAIL

4309755

Non-SIS

Project Description: Lake-Wekiva Trail from CR 435 Trailheads to SR 46

Work Summary: BIKE PATH/TRAIL **From:** FROM CR 435 TRAILHEADS
To: TO SR 46

Lead Agency: FDOT



Phase	Fund Source	2019/20	2020/21	2021/22	2022/23	2023/24	Total
CST	ACSN	167,696	0	0	0	0	167,696
CST	SL	708,671	0	0	0	0	708,671
CST	TALN	233,716	0	0	0	0	233,716
CST	SN	2,040,738	0	0	0	0	2,040,738
Total		3,150,821	0	0	0	0	3,150,821

Prior Year Cost: 244,001
Future Year Cost: 0
Total Project Cost: 3,394,822
L RTP: pg. 10,11,35,36

LAKE-WEKIVA TRAIL FROM SR 46 TO HOJIN STREET

4309753

Non-SIS



Project Description:

Work Summary: BIKE PATH/TRAIL **From:**

To:

Lead Agency: MANAGED BY LAKE COUNTY **Length:** .000

Phase	Fund Source	2019/20	2020/21	2021/22	2022/23	2023/24	Total
ROW	TALN	15,013	0	0	0	0	15,013
ROW	TALL	508,153	0	0	0	0	508,153
ROW	SN	60,970	0	0	0	0	60,970
ROW	SL	5,000	0	0	0	0	5,000
Total		589,136	0	0	0	0	589,136

Prior Year Cost: 812,001
Future Year Cost: 0
Total Project Cost: 1,401,137

LAKESHORE DR (PINE EDGE ELEM)

4396871

Non-SIS



Project Description:

Work Summary: SIDEWALK **From:** FROM CHERITH LANE

To: TO OLEANDER DRIVE

Lead Agency: MANAGED BY LAKE COUNTY **Length:** 1.231 mi

Phase	Fund Source	2019/20	2020/21	2021/22	2022/23	2023/24	Total
PE	TALT	0	140,930	0	0	0	140,930
PE	TALL	0	3,000	0	0	0	3,000
Total		0	143,930	0	0	0	143,930

Prior Year Cost: 0
Future Year Cost: 0
Total Project Cost: 143,930

LOG HOUSE RD (PINE RIDGE ELEM SCH)

4396831

Non-SIS

Project Description:

Work Summary: SIDEWALK **From:** FROM CR 561
To: TO LAKESHORE DRIVE

Lead Agency: MANAGED BY LAKE COUNTY **Length:** 0.850 mi

No Map
Available

Phase	Fund Source	2019/20	2020/21	2021/22	2022/23	2023/24	Total
PE	TALT	0	70,466	0	0	0	70,466
PE	TALL	0	28,744	0	0	0	28,744
Total		0	99,210	0	0	0	99,210

Prior Year Cost: 0
Future Year Cost: 0
Total Project Cost: 99,210
LRTP: pg.11

RADIO ROAD (TREADWAY ELEM SCH)

4396841

Non-SIS



Project Description:

Work Summary: SIDEWALK **From:** FROM SILVER BLUFF DR

To: TO TREADWAY SCH RD

Lead Agency: MANAGED BY LAKE COUNTY **Length:** 0.967 mi

Phase	Fund Source	2019/20	2020/21	2021/22	2022/23	2023/24	Total
PE	TALL	0	190,600	0	0	0	190,600
Total		0	190,600	0	0	0	190,600

Prior Year Cost: 0
Future Year Cost: 0
Total Project Cost: 190,600
LRTP: pg.11

S SUMTER TR WITHLACOOCHEE FOREST FROM GOOD NEIGHBOR

4354715

Non-SIS



Project Description:

Work Summary: BIKE PATH/TRAIL **From:**

To:

Lead Agency: Managed by FDOT **Length:** .000

Phase	Fund Source	2019/20	2020/21	2021/22	2022/23	2023/24	Total
PE	DIH	0	0	0	20,000	0	20,000
PE	TALT	0	0	0	1,387,422	0	1,387,422
Total		0	0	0	1,407,422	0	1,407,422

Prior Year Cost: 0
Future Year Cost: 0
Total Project Cost: 1,407,422

SOUTH LAKE TRAIL - PHASE 4

4358931

Non-SIS



Project Description: SOUTH LAKE TRAIL PHASE 4

Work Summary: BIKE PATH/TRAIL **From:** FROM VAN FLEET TRAIL

To: TO VILLA CITY ROAD (CR 565)

Lead Agency: FDOT

Phase	Fund Source	2019/20	2020/21	2021/22	2022/23	2023/24	Total
ROW	DDR	120,000	0	0	0	0	120,000
ROW	DIOH	128,431	129,891	63,891	0	0	322,213
ROW	SL	0	15,700	0	0	0	15,700
CST	DDR	0	0	15,146,132	0	0	15,146,132
CST	DIOH	0	0	561,748	0	0	561,748
Total		248,431	145,591	15,771,771	0	0	16,165,793

Prior Year Cost: 6,550,586
Future Year Cost: 0
Total Project Cost: 22,716,379
LRTP: pg.35,36

SOUTH LAKE TRAIL PH IIIB

4225703

SIS



Project Description:

Work Summary: BIKE PATH/TRAIL **From:** FROM SR 33 (CRITTENGEN ST)

To: TO 2ND ST

Lead Agency: Managed by FDOT

Length: 0.000 mi

Phase	Fund Source	2019/20	2020/21	2021/22	2022/23	2023/24	Total
PE	DDR	0	0	83,000	0	0	83,000
ROW	TALT	0	0	1,400,000	0	1,550,000	2,950,000
ROW	DIH	0	0	54,700	54,700	54,509	163,909
ROW	SL	0	0	0	1,100,000	0	1,100,000
CST	TALT	0	0	0	0	1,604,661	1,604,661
CST	SL	0	0	0	0	25,969	25,969
CST	TALL	0	0	0	0	769,623	769,623
Total		0	0	1,537,700	1,154,700	4,004,762	6,697,162

Prior Year Cost: 947,766
Future Year Cost: 1,354,236
Total Project Cost: 8,999,164
L RTP: pg.10,11

SOUTH LAKE-SUMTER TRAIL PHASE IV FROM VAN FLEET TR TO

4358932

Non-SIS



Project Description:

Work Summary: BIKE PATH/TRAIL **From:**

To:

Lead Agency: Managed by FDOT **Length:** .000

Phase	Fund Source	2019/20	2020/21	2021/22	2022/23	2023/24	Total
ROW	DS	0	150,000	0	0	0	150,000
ROW	DIH	0	20,000	20,000	10,000	0	50,000
ROW	DDR	0	30,000	25,000	108,000	0	163,000
Total		0	200,000	45,000	118,000	0	363,000

Prior Year Cost: 0
Future Year Cost: 0
Total Project Cost: 363,000

SOUTH LAKE-SUMTER TRAIL PHASE IV LAKE-SUMTER COUNTY

4358933

Non-SIS

Project Description:

Work Summary: BIKE PATH/TRAIL **From:**

To:

Lead Agency: Managed by FDOT **Length:** .000

No Map Available

Phase	Fund Source	2019/20	2020/21	2021/22	2022/23	2023/24	Total
ROW	DIH	0	25,000	25,000	20,000	0	70,000
ROW	DDR	0	275,000	290,000	270,000	0	835,000
Total		0	300,000	315,000	290,000	0	905,000

Prior Year Cost: 0
Future Year Cost: 0
Total Project Cost: 905,000

SOUTH SUMTER TRAIL CR 478 FROM US 301 TO SR 471

4354713

Non-SIS

Project Description:

Work Summary: BIKE PATH/TRAIL **From:**

To:

Lead Agency: Managed by FDOT **Length:** 3.258

No Map Available

Phase	Fund Source	2019/20	2020/21	2021/22	2022/23	2023/24	Total
PE	DIH	0	0	0	20,000	0	20,000
PE	SL	0	0	0	3,500,000	0	3,500,000
Total		0	0	0	3,520,000	0	3,520,000

Prior Year Cost: 0
Future Year Cost: 0
Total Project Cost: 3,520,000

SOUTH SUMTER TRAIL CR 673 FROM I-75 TO CR 478

4354714

Non-SIS

Project Description:

Work Summary: BIKE PATH/TRAIL **From:**

To:

Lead Agency: Managed by FDOT **Length:** 5.673

No Map Available

Phase	Fund Source	2019/20	2020/21	2021/22	2022/23	2023/24	Total
PE	DIH	0	0	0	20,000	0	20,000
PE	TALT	0	0	0	3,500,000	0	3,500,000
PE	SL	0	0	0	2,809,831	0	2,809,831
Total		0	0	0	6,329,831	0	6,329,831

Prior Year Cost: 0
Future Year Cost: 0
Total Project Cost: 6,329,831

SOUTH SUMTER TRAIL– SR 471

4354712

SIS

Project Description: SOUTH SUMTER TRAIL– SR 471 from SR 50 to CR 478- Bike Path/Trail Project - Project Sponsor: FDOT

Work Summary: BIKE PATH/TRAIL **From:** FROM SR 50
To: TO CR 478

Lead Agency: Sumter County

No Map Available

Phase	Fund Source	2019/20	2020/21	2021/22	2022/23	2023/24	Total
CST	DIH	0	0	0	22,220	0	22,220
CST	SL	0	0	0	611,050	0	611,050
CST	TALN	0	0	0	252,498	0	252,498
CST	TALL	0	0	0	772,686	0	772,686
CST	SN	0	0	0	3,125,151	0	3,125,151
CST	DDR	0	0	0	36,443	0	36,443
Total		0	0	0	4,820,048	0	4,820,048

Prior Year Cost: 2,983,341
Future Year Cost: 0
Total Project Cost: 7,803,389
LRTP: pg. 35, 36

SR40 TRAIL (BLACK BEAR SCENIC TRAIL)

4363601

Non-SIS



Project Description:

Work Summary: BIKE PATH/TRAIL **From:** FROM LEVY HAMMOCK RD

To: TO SR15 (US17)

Lead Agency: Lake County **Length:** 26.884 mi

Phase	Fund Source	2019/20	2020/21	2021/22	2022/23	2023/24	Total
PD&E	DIOH	38,110	0	0	0	0	38,110
PD&E	SA	1,000,000	0	0	0	0	1,000,000
PLN	SA	100,000	0	0	0	0	100,000
Total		1,138,110	0	0	0	0	1,138,110

Prior Year Cost: 10,551
Future Year Cost: 0
Total Project Cost: 1,148,661
LRTP: pg.10,11

Section 7 - Transit and Transportation Disadvantaged

LAKE COUNTY

4333051

Non-SIS

Project Description: LAKE COUNTY-BLOCK GRANT OPERATING ASSISTANCE FOR FIXED ROUTE SERVICE SEC 5307

Work Summary: OPERATING FOR FIXED ROUTE **From:** BLOCK GRANT OPERATING ASSISTANCE FOR FIXED ROUTE

To:

Lead Agency: Managed by LAKE COUNTY PUBLIC **Length:** 0.000 mi

No Map Available

Phase	Fund Source	2019/20	2020/21	2021/22	2022/23	2023/24	Total
OPS	DPTO	753,699	791,393	830,963	0	0	2,376,055
OPS	LF	753,699	791,393	830,963	0	0	2,376,055
Total		1,507,398	1,582,786	1,661,926	0	0	4,752,110

Prior Year Cost: 4,280,276
Future Year Cost: 0
Total Project Cost: 9,032,386
L RTP: pg.16,32,33,37,58

LAKE-BLOCK GRANT OPERATING ASSISTANCE SEC 5307

4424531

Non-SIS



Project Description:

Work Summary: OPERATING FOR FIXED ROUTE **From:**

To:

Lead Agency: Managed by LAKE COUNTY PUBLIC

Length: .000

Phase	Fund Source	2019/20	2020/21	2021/22	2022/23	2023/24	Total
OPS	DPTO	0	0	0	880,664	916,137	1,796,801
OPS	LF	0	0	0	880,664	916,137	1,796,801
Total		0	0	0	1,761,328	1,832,274	3,593,602

Prior Year Cost: 0
Future Year Cost: 0
Total Project Cost: 3,593,602

LAKE-COUNTY CAPITAL

4143312

Non-SIS



Project Description:

Work Summary: CAPITAL FOR FIXED ROUTE **From:** FIXED ROUTE GRANT SECTION

To: 5307 PURCHASE BUSES

Lead Agency: Lake County

Length: 0.000 mi

Phase	Fund Source	2019/20	2020/21	2021/22	2022/23	2023/24	Total
CAP	FTA	3,503,801	3,608,916	3,717,183	3,828,698	3,943,560	18,602,158
CAP	LF	875,950	902,229	929,296	957,175	985,890	4,650,540
Total		4,379,751	4,511,145	4,646,479	4,785,873	4,929,450	23,252,698

Prior Year Cost: 5,531,749
Future Year Cost: 0
Total Project Cost: 28,784,447
LRTP: pg.11,34

LAKE-FTA SEC 5311 RURAL TRANSPORTATION

4333081

Non-SIS



Project Description:

Work Summary: OPERATING/ADMIN. ASSISTANCE

From:

To:

Lead Agency: Managed by LAKE COUNTY PUBLIC

Length: 0.000 mi

Phase	Fund Source	2019/20	2020/21	2021/22	2022/23	2023/24	Total
OPS	DU	540,060	567,063	595,416	0	0	1,702,539
OPS	LF	540,060	567,063	595,416	0	0	1,702,539
Total		1,080,120	1,134,126	1,190,832	0	0	3,405,078

Prior Year Cost: 1,854,166
Future Year Cost: 0
Total Project Cost: 5,259,244
LRTP: pg.11,34

LAKE-SEC 5339

4388671

Non-SIS

Project Description: SEC 5339 SMALL URBAN CAPITAL FOR LAKE COUNTY FIXED ROUTE

Work Summary: CAPITAL FOR FIXED ROUTE **From:** CAPITAL IMPROVEMENTS PROJECT

To: FOR FIXED ROUTE

Lead Agency: MANAGED BY LAKE COUNTY

No Map Available

Phase	Fund Source	2019/20	2020/21	2021/22	2022/23	2023/24	Total
CAP	FTA	437,845	0	0	0	0	437,845
CAP	LF	109,461	0	0	0	0	109,461
Total		547,306	0	0	0	0	547,306

Prior Year Cost: 1,375,580
Future Year Cost: 0
Total Project Cost: 1,922,886
LRTP: pg.11,34

LAKE-SECTION 5311 RURAL TRANSPORTATION

4424581

Non-SIS



Project Description:

Work Summary: OPERATING/ADMIN. ASSISTANCE

From:

To:

Lead Agency: Managed by LAKE COUNTY PUBLIC

Length: .000

Phase	Fund Source	2019/20	2020/21	2021/22	2022/23	2023/24	Total
OPS	DU	0	0	0	625,187	656,446	1,281,633
OPS	LF	0	0	0	625,187	656,446	1,281,633
Total		0	0	0	1,250,374	1,312,892	2,563,266

Prior Year Cost: 0
Future Year Cost: 0
Total Project Cost: 2,563,266

SUMTER-SEC 5311 RURAL TRANSPORTATION

4333101

Non-SIS



Project Description:

Work Summary: OPERATING/ADMIN. ASSISTANCE **From:**

To:

Lead Agency: Managed by SUMTER COUNTY TRANSIT **Length:** 0.000 mi

Phase	Fund Source	2019/20	2020/21	2021/22	2022/23	2023/24	Total
OPS	DU	331,776	348,364	365,783	0	0	1,045,923
OPS	LF	331,776	348,364	365,783	0	0	1,045,923
Total		663,552	696,728	731,566	0	0	2,091,846

Prior Year Cost: 1,186,728
Future Year Cost: 0
Total Project Cost: 3,278,574
LRTP: pg.11,34

SUMTER-SECTION 5311 RURAL TRANSPORTATION

4424611

Non-SIS



Project Description:

Work Summary: OPERATING/ADMIN. ASSISTANCE **From:**

To:

Lead Agency: Managed by SUMTER COUNTY TRANSIT **Length:** .000

Phase	Fund Source	2019/20	2020/21	2021/22	2022/23	2023/24	Total
OPS	DU	0	0	0	384,072	403,275	787,347
OPS	LF	0	0	0	384,072	403,275	787,347
Total		0	0	0	768,144	806,550	1,574,694

Prior Year Cost: 0
Future Year Cost: 0
Total Project Cost: 1,574,694

Section 9 - Airports

LAKE-LEESBURG INTL

4384481

Non-SIS

Project Description:

Work Summary: AVIATION **From:** WILCO DRIVE IMPROVEMENTS

To:

Lead Agency: MANAGED BY CITY OF LEESBURG **Length:** 0.000 mi

No Map Available

Phase	Fund Source	2019/20	2020/21	2021/22	2022/23	2023/24	Total
CAP	DPTO	200,000	0	0	0	0	200,000
CAP	LF	50,000	0	0	0	0	50,000
Total		250,000	0	0	0	0	250,000

Prior Year Cost: 0
Future Year Cost: 0
Total Project Cost: 250,000
LRTP: pg.10,11

LAKE-LEESBURG INTL

4384491

Non-SIS

Project Description:

Work Summary: AVIATION **From:** CONSTRUCT HANGAR

To:

Lead Agency: MANAGED BY CITY OF LEESBURG **Length:** 0.000 mi

No Map Available

Phase	Fund Source	2019/20	2020/21	2021/22	2022/23	2023/24	Total
CAP	DDR	0	0	500,000	0	0	500,000
CAP	LF	0	0	500,000	0	0	500,000
Total		0	0	1,000,000	0	0	1,000,000

Prior Year Cost: 0
Future Year Cost: 0
Total Project Cost: 1,000,000
LRTP: pg.10,11

LAKE-LEESBURG INTL

4407771

Non-SIS



Project Description:

Work Summary: AVIATION PRESERVATION **From:** APRON EXPANSION

To:

Lead Agency: MANAGED BY CITY OF LEESBURG **Length:** 0.000 mi

Phase	Fund Source	2019/20	2020/21	2021/22	2022/23	2023/24	Total
CAP	DDR	0	0	0	0	320,000	320,000
CAP	LF	0	0	0	0	80,000	80,000
Total		0	0	0	0	400,000	400,000

Prior Year Cost: 0
Future Year Cost: 0
Total Project Cost: 400,000
LRTP: N/A

LAKE-LEESBURG INTL

4384471

Non-SIS

Project Description:

Work Summary: AVIATION PRESERVATION **From:** INSTALL AIRFIELD GUIDANCE SIGNS

To:

Lead Agency: MANAGED BY CITY OF LEESBURG **Length:** 0.000 mi

No Map Available

Phase	Fund Source	2019/20	2020/21	2021/22	2022/23	2023/24	Total
CAP	DDR	0	0	87,500	0	0	87,500
CAP	LF	0	0	87,500	0	0	87,500
CAP	FAA	0	0	1,575,000	0	0	1,575,000
Total		0	0	1,750,000	0	0	1,750,000

Prior Year Cost: 0
Future Year Cost: 0
Total Project Cost: 1,750,000
L RTP: pg.10,11

LAKE-LEESBURG INTL

4407761

Non-SIS



Project Description:

Work Summary: AVIATION PRESERVATION **From:** AIRFIELD IMPROVEMENTS

To:

Lead Agency: MANAGED BY CITY OF LEESBURG **Length:** 0.000 mi

Phase	Fund Source	2019/20	2020/21	2021/22	2022/23	2023/24	Total
CAP	DDR	83,200	500,000	0	0	0	583,200
CAP	LF	20,800	125,000	0	0	0	145,800
CAP	FAA	936,000	5,625,000	0	0	0	6,561,000
Total		1,040,000	6,250,000	0	0	0	7,290,000

Prior Year Cost: 0
Future Year Cost: 0
Total Project Cost: 7,290,000
L RTP: N/A

LAKE-LEESBURG INTL

4407751

Non-SIS



Project Description:

Work Summary: AVIATION PRESERVATION **From:** PAVEMENT REHABILITATION

To:

Lead Agency: MANAGED BY CITY OF LEESBURG **Length:** 0.000 mi

Phase	Fund Source	2019/20	2020/21	2021/22	2022/23	2023/24	Total
CAP	DDR	360,000	0	0	0	0	360,000
CAP	LF	90,000	0	0	0	0	90,000
CAP	FAA	4,050,000	0	0	0	0	4,050,000
Total		4,500,000	0	0	0	0	4,500,000

Prior Year Cost: 450,000
Future Year Cost: 0
Total Project Cost: 4,950,000
L RTP: N/A

LAKE-LEESBURG INTL INSTALL FUEL TANK

4448731

Non-SIS



Project Description:

Work Summary: AVIATION

From:

To:

Lead Agency: City of Leesburg

Length: .000

Phase	Fund Source	2019/20	2020/21	2021/22	2022/23	2023/24	Total
CAP	DDR	0	0	0	0	200,000	200,000
CAP	LF	0	0	0	0	50,000	50,000
Total		0	0	0	0	250,000	250,000

Prior Year Cost: 0
Future Year Cost: 0
Total Project Cost: 250,000

LAKE-LEESBURG INTL LAND ACQUISITION

4424841

Non-SIS



Project Description:

Work Summary: AVIATION

From:

To:

Lead Agency: City of Leesburg

Length: .000

Phase	Fund Source	2019/20	2020/21	2021/22	2022/23	2023/24	Total
CAP	DDR	0	0	0	400,000	0	400,000
CAP	LF	0	0	0	100,000	0	100,000
Total		0	0	0	500,000	0	500,000

Prior Year Cost: 0
Future Year Cost: 0
Total Project Cost: 500,000

LAKE-LEESBURG INTL PAVEMENT REHABILITATION

4448721

Non-SIS



Project Description:

Work Summary: AVIATION PRESERVATION **From:**

To:

Lead Agency: City of Leesburg **Length:** .000

Phase	Fund Source	2019/20	2020/21	2021/22	2022/23	2023/24	Total
CAP	DPTO	320,000	0	0	0	0	320,000
CAP	LF	80,000	0	0	0	0	80,000
Total		400,000	0	0	0	0	400,000

Prior Year Cost: 0
Future Year Cost: 0
Total Project Cost: 400,000

LAKE-UMATILLA

4316251

Non-SIS



Project Description:

Work Summary: AVIATION CAPACITY PROJECT **From:** CONSTRUCT TERMINAL AREA A

To: PRON

Lead Agency: City of Umatilla **Length:** 0.000 mi

Phase	Fund Source	2019/20	2020/21	2021/22	2022/23	2023/24	Total
CAP	DDR	0	0	400,000	0	0	400,000
CAP	LF	0	0	100,000	0	0	100,000
Total		0	0	500,000	0	0	500,000

Prior Year Cost: 0
Future Year Cost: 0
Total Project Cost: 500,000
L RTP: pg.10,11

LAKE-UMATILLA

4316201

Non-SIS



Project Description:

Work Summary: AVIATION CAPACITY PROJECT **From:** DESIGN PARALLEL TAXIWAY S

To: OUTH

Lead Agency: City of Umatilla **Length:** 0.000 mi

Phase	Fund Source	2019/20	2020/21	2021/22	2022/23	2023/24	Total
CAP	DDR	0	600,000	0	0	0	600,000
CAP	LF	0	150,000	0	0	0	150,000
Total		0	750,000	0	0	0	750,000

Prior Year Cost: 0
Future Year Cost: 0
Total Project Cost: 750,000
L RTP: pg.10,11

LAKE-UMATILLA

4316241

Non-SIS



Project Description:

Work Summary: AVIATION CAPACITY PROJECT **From:** CONSTRUCT PARALLEL TAXIWA

To: Y SOUTH

Lead Agency: City of Umatilla

Length: 0.000 mi

Phase	Fund Source	2019/20	2020/21	2021/22	2022/23	2023/24	Total
CAP	DDR	0	0	40,000	0	0	40,000
CAP	LF	0	0	10,000	0	0	10,000
CAP	FAA	0	0	450,000	0	0	450,000
Total		0	0	500,000	0	0	500,000

Prior Year Cost: 63,400
Future Year Cost: 0
Total Project Cost: 563,400
L RTP: pg.10,11

LAKE-UMATILLA MUNI ACQUIRE CENTRAL TERMINAL AREA LAND

4384972

Non-SIS



Project Description:

Work Summary: AVIATION

From:

To:

Lead Agency: City of Umatilla

Length: .000

Phase	Fund Source	2019/20	2020/21	2021/22	2022/23	2023/24	Total
CAP	DPTO	0	0	0	0	600,000	600,000
CAP	LF	0	0	0	0	150,000	150,000
Total		0	0	0	0	750,000	750,000

Prior Year Cost: 0
Future Year Cost: 0
Total Project Cost: 750,000

LAKE-UMATILLA MUNI EXTEND RUNWAY 1-19

4353162

Non-SIS



Project Description:

Work Summary: AVIATION
PRESERVATION

From:

To:

Lead Agency: City of Umatilla

Length: .000

Phase	Fund Source	2019/20	2020/21	2021/22	2022/23	2023/24	Total
CAP	DDR	0	12,000	120,000	0	0	132,000
CAP	LF	0	3,000	30,000	0	0	33,000
CAP	FAA	0	135,000	0	1,350,000	0	1,485,000
Total		0	150,000	150,000	1,350,000	0	1,650,000

Prior Year Cost: 0
Future Year Cost: 0
Total Project Cost: 1,650,000

LAKE-UMATILLA MUNI HANGAR DEVELOPMENT

4448741

Non-SIS



Project Description:

Work Summary: AVIATION PRESERVATION **From:**

To:

Lead Agency: City of Umatilla **Length:** .000

Phase	Fund Source	2019/20	2020/21	2021/22	2022/23	2023/24	Total
CAP	DPTO	800,000	0	0	0	0	800,000
CAP	LF	200,000	0	0	0	0	200,000
Total		1,000,000	0	0	0	0	1,000,000

Prior Year Cost: 0
Future Year Cost: 0
Total Project Cost: 1,000,000

LAKE-UMATILLA MUNI RELOCATE ROAD

4448751

Non-SIS



Project Description:

Work Summary: AVIATION PRESERVATION **From:**

To:

Lead Agency: City of Umatilla **Length:** .000

Phase	Fund Source	2019/20	2020/21	2021/22	2022/23	2023/24	Total
CAP	DDR	0	0	0	0	320,000	320,000
CAP	LF	0	0	0	0	80,000	80,000
Total		0	0	0	0	400,000	400,000

Prior Year Cost: 0
Future Year Cost: 0
Total Project Cost: 400,000

Project Index

FM #	TIP #	Project Name	Page
2382752		SR 46 / US 441	15
2382753		SR 46	14
2382757		SR 429/46 (WEKIVA PKWY)	12
2382758		CR 46A REALIGNMENT	3
2383193		LEESBURG-LAKE HARRIS REGIONAL POND	2
2383955		SR 500 (US 441)	16
2447543		VEGETATION AND	17
4061103		FLORIDA'S TURNPIKE	2
4130193		TRAFFIC ENGINEERING CONTRACTS	7
4130198		TRAFFIC ENGINEERING CONTRACTS	8
4136151		LIGHTING AGREEMENTS	6
4136152		LIGHTING AGREEMENTS	5
4143312		LAKE-COUNTY CAPITAL	4
4171991		LADY LAKE	5
4181061		LAKE PRIMARY	6
4181111		SUMTER PRIMARY	16
4225703		SOUTH LAKE TRAIL PH IIIB	14
4231131		CITY OF LEESBURG MOA	3
4237901		MOA W/ MASCOTTE	8
4254581		MOA W/ TAVARES	9
4271941		MOA W/WLDWOOD	10
4273051		RESERVE BOX-VILLAGES	5
4291571		ASPHALT REPAIR	2
4291762		DRAINAGE REPAIR	4
4293561		SR 500 (US 441)	17
4295561		SR 44 BRIDGE# 110063	3
4301321		SR 35 (US 301)	11

Project Index

FM #	TIP #	Project Name	Page
4309753		LAKE-WEKIVA TRAIL FROM SR 46 TO HOJIN STREET	8
4309755		LAKE-WEKIVA TRAIL	7
4314001		LAKE-SECTION 5303	5
4316201		LAKE-UMATILLA	12
4316241		LAKE-UMATILLA	13
4316251		LAKE-UMATILLA	11
4333051		LAKE COUNTY	2
4333081		LAKE-FTA SEC 5311 RURAL TRANSPORTATION	5
4333101		SUMTER-SEC 5311 RURAL TRANSPORTATION	8
4349121		C-470	2
4353162		LAKE-UMATILLA MUNI EXTEND RUNWAY 1-19	15
4354712		SOUTH SUMTER TRAIL- SR 471	19
4354713		SOUTH SUMTER TRAIL CR 478 FROM US 301 TO SR 471	17
4354714		SOUTH SUMTER TRAIL CR 673 FROM I-75 TO CR 478	18
4354715		S SUMTER TR WITHLACOOCHEE FOREST FROM GOOD NEIGHBOR TR TO I-75 /CR 673	12
4354931		WEST STREET	18
4357851		FLORIDA'S TURNPIKE	4
4357861		FLORIDA'S TURNPIKE	7
4357871		FLORIDA'S TURNPIKE	6
4357881		FLORIDA'S TURNPIKE	8
4357882		WIDEN TPK FROM CR470 INTCHG TO LAKE/SUMTER C/L(MP297.3-297.9)(4TO8LNS)	18
4357891		FLORIDA'S TURNPIKE	5
4358593		SR 50	8
4358594		SR 50	9
4358595		SR 50	7
4358931		SOUTH LAKE TRAIL - PHASE 4	13
4358932		SOUTH LAKE-SUMTER TRAIL PHASE IV FROM VAN FLEET TR TO LAKE-SUMTER LINE	15

Project Index

FM #	TIP #	Project Name	Page
4358933		SOUTH LAKE-SUMTER TRAIL PHASE IV LAKE-SUMTER COUNTY LINE TO SR 50	16
4363601		SR40 TRAIL (BLACK BEAR SCENIC TRAIL)	20
4363651		ITS ARCHITECTURE STUDY	9
4371141		SR 46	3
4371142		SR 46	4
4371145		CR 46A	2
4371146		SR 46/SR 429	5
4373291		SR 44	6
4379381		SR 19/S CENTRAL AVE	12
4384471		LAKE-LEESBURG INTL	5
4384481		LAKE-LEESBURG INTL	2
4384491		LAKE-LEESBURG INTL	3
4384972		LAKE-UMATILLA MUNI ACQUIRE CENTRAL TERMINAL AREA LAND	14
4385622		I-75 (SR 93) SUMTER CO REST AREA	2
4385623		I-75 (SR 93)	3
4388671		LAKE-SEC 5339	6
4390481		EAST ORANGE AVENUE	5
4391381		SR 19 (BAY STREET)	10
4391391		SR 25	13
4391421		SR 44 FROM EAST OF BRITT ROAD TO EAST OF VALLEY HILL LANE	14
4391681		WEKIVA TOLL FACILITIES MAINTENANCE	9
4392231		C-478	2
4393292		LAKE SUMTER URBAN AREA FY 2018/2019-2019/2020 UPWP	2
4393293		LAKE SUMTER URBAN AREA FY 2020/2021-2021/2022 UPWP	3
4393294		LAKE SUMTER URBAN AREA FY 2022/2023-2023/2024 UPWP	4
4394151		CITRUS TOWER BOULEVARD	2
4394931		CR 473	2

Project Index

FM #	TIP #	Project Name	Page
4396631		HANCOCK RD (LOST LAKE ELEM SCHL)	6
4396831		LOG HOUSE RD (PINE RIDGE ELEM SCH)	10
4396841		RADIO ROAD (TREADWAY ELEM SCH)	11
4396851		CR561/MONROE ST (ASTATULA ELEM SCH)	4
4396861		CR44 BYPASS-(EUSTIS MIDDLE SCH)	3
4396871		LAKESHORE DR (PINE EDGE ELEM)	9
4397011		LAKESHORE DRIVE	4
4397021		LAKE LOUISA ROAD	3
4399121		CR 478	2
4402941		FLORIDA'S TURNPIKE	6
4402942		FLORIDA'S TURNPIKE	3
4402951		FLORIDA'S TURNPIKE	5
4402952		FLORIDA'S TURNPIKE	2
4407751		LAKE-LEESBURG INTL	7
4407761		LAKE-LEESBURG INTL	6
4407771		LAKE-LEESBURG INTL	4
4408011		LAKE-SUMTER MPO PLANNING STUDIES	6
4410141		SR 44	13
4411351		SR 19	9
4411371		SR 44/SOUTH STREET	16
4413642		CR 42	3
4413701		SR 19	7
4417101		ROUND LAKE ROAD WIDE & EXTEND	10
4417171		RECONSTRUCT TPK MAINLINE SUMTER CNTY (MP 297.9 - 308.9)	11
4417172		SAFETY IMPROVEMENTS FOR TPK MAINLINE IN SUMTER CNTY (MP 297.9-308.9)	8
4424531		LAKE-BLOCK GRANT OPERATING ASSISTANCE SEC 5307	3
4424581		LAKE-SECTION 5311 RURAL TRANSPORTATION	7

Project Index

FM #	TIP #	Project Name	Page
4424611		SUMTER-SECTION 5311 RURAL TRANSPORTATION	9
4424841		LAKE-LEESBURG INTL LAND ACQUISITION	9
4425711		LEESBURG OPERATIONS COMPLEX CONTRACTED SERVICES	7
4425712		LEESBURG OPERATIONS COMPLEX FCO PROJECTS	4
4428751		SR 44 FROM EAST OF SR 35/MAIN STREET TO LAKE CO LINE	14
4429101		SR 46 FROM .35 MILES W OF SWAN RD TO HOJIN ST	15
4435071		SR 44 SOUTH OF LAKESHORE BLVD TO NORTH OF LAKESHORE BLVD	15
4435081		LAKE ELLA ROAD FROM NE 90TH ST TO SR 25 / SR 500 (US 27 / US 441)	7
4435101		SR 19 FROM BURRELL RD TO MEBANE ST	11
4435111		CR 452 FROM CR 44 TO LAKE / MARION COUNTY LINE	4
4435461		US 441 FROM GRIFFIN RD TO MLK BLVD	17
4435921		SR 44 / MAIN ST / SR 500 FROM 750' E OF SR 44 TO 535' S OF LINCOLN AVE	13
4439901		BAILEY RD BRIDGE REPLACEMENT OVER TPK (SR91) IN SUMTER CNTY (MP 299.7)	2
4439991		SHOULDER AND/OR DITCH REPAIRS	12
4448721		LAKE-LEESBURG INTL PAVEMENT REHABILITATION	10
4448731		LAKE-LEESBURG INTL INSTALL FUEL TANK	8
4448741		LAKE-UMATILLA MUNI HANGAR DEVELOPMENT	16
4448751		LAKE-UMATILLA MUNI RELOCATE ROAD	17
4449271		SR 500 / US 441 FROM SLEEPY HOLLOW RD TO AIRPORT VIEW	6