



**CENTRAL
FLORIDA
EXPRESSWAY
AUTHORITY**

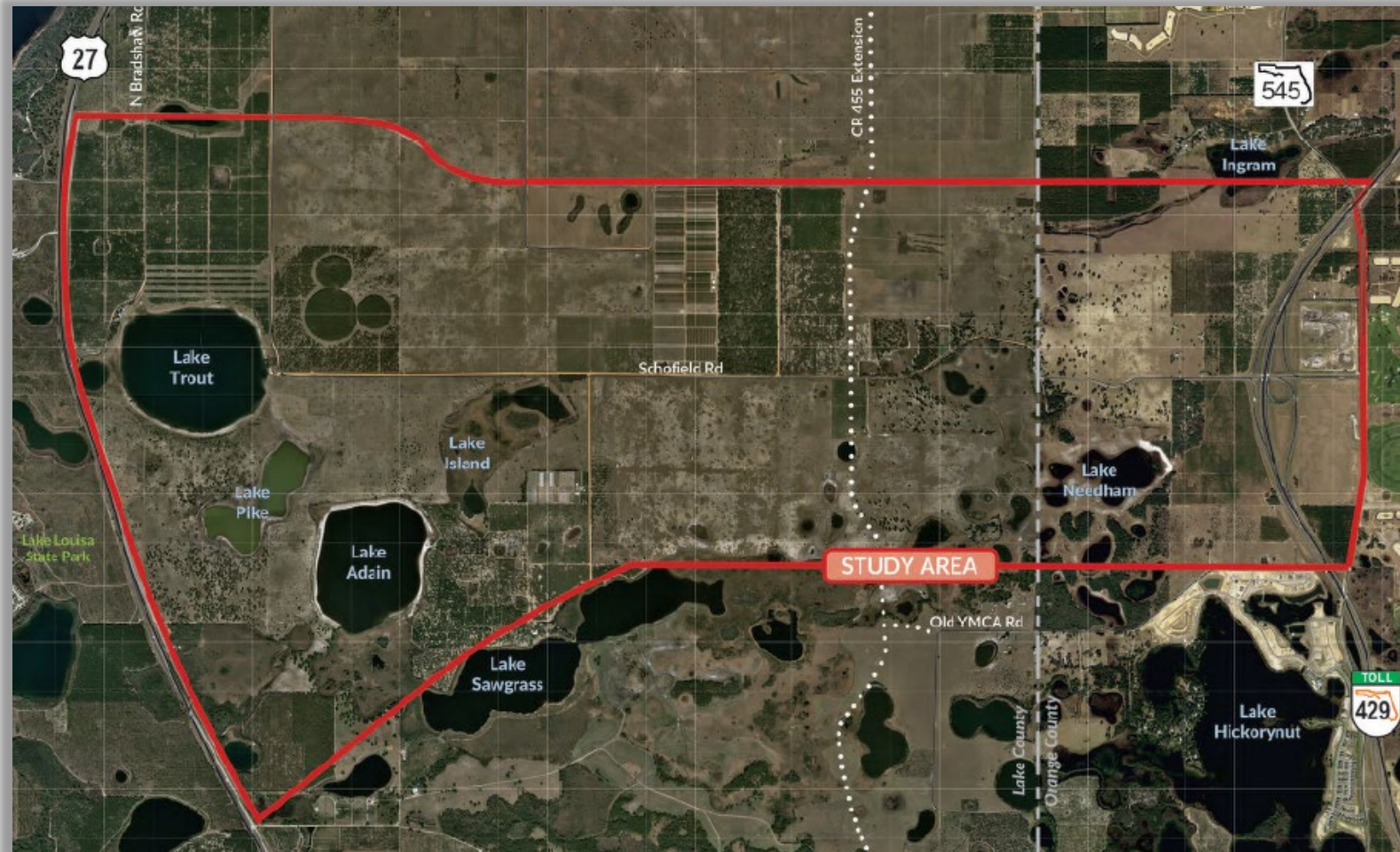
LAKE / ORANGE COUNTY CONNECTOR

(US 27 to SR 429)

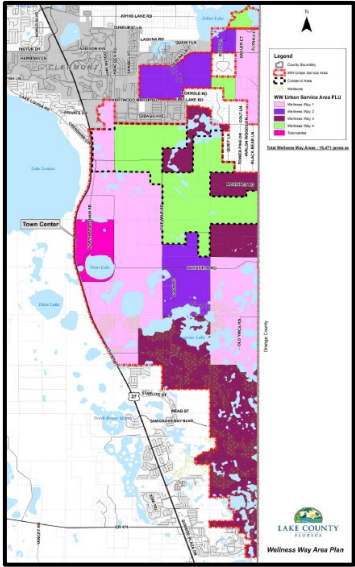
**Feasibility / Project Development & Environment Study
— February 27, 2019 —**

Study Objective

Determine if a Lake/Orange County Connector is viable and fundable.

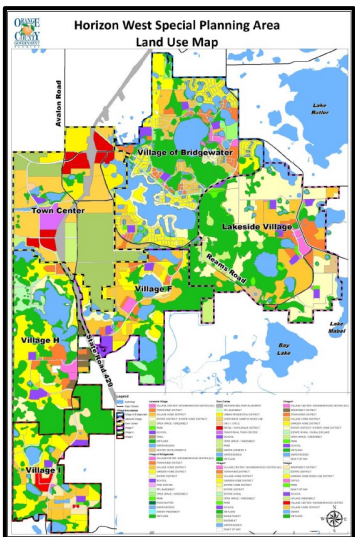


Future Land Use



Wellness Way Area Plan

- Lake County
- Significant economic development potential
- Anticipated build-out of 16,531 units will generate over 26,839 jobs



Horizon West Special Planning Area

- Orange County
- Fast-growing master-planned community
- Anticipated build-out of 40,000 dwelling units

Project's Development Process

Previous Feasibility Studies

- Feasibility studies conducted in 2002 and 2007
- Traffic and revenue analysis conducted in 2017

Identify Project

- Identified in the CFX 2040 Master Plan
- Identified in the Lake County and Orange County Long Range Transportation Plans

Work Plan

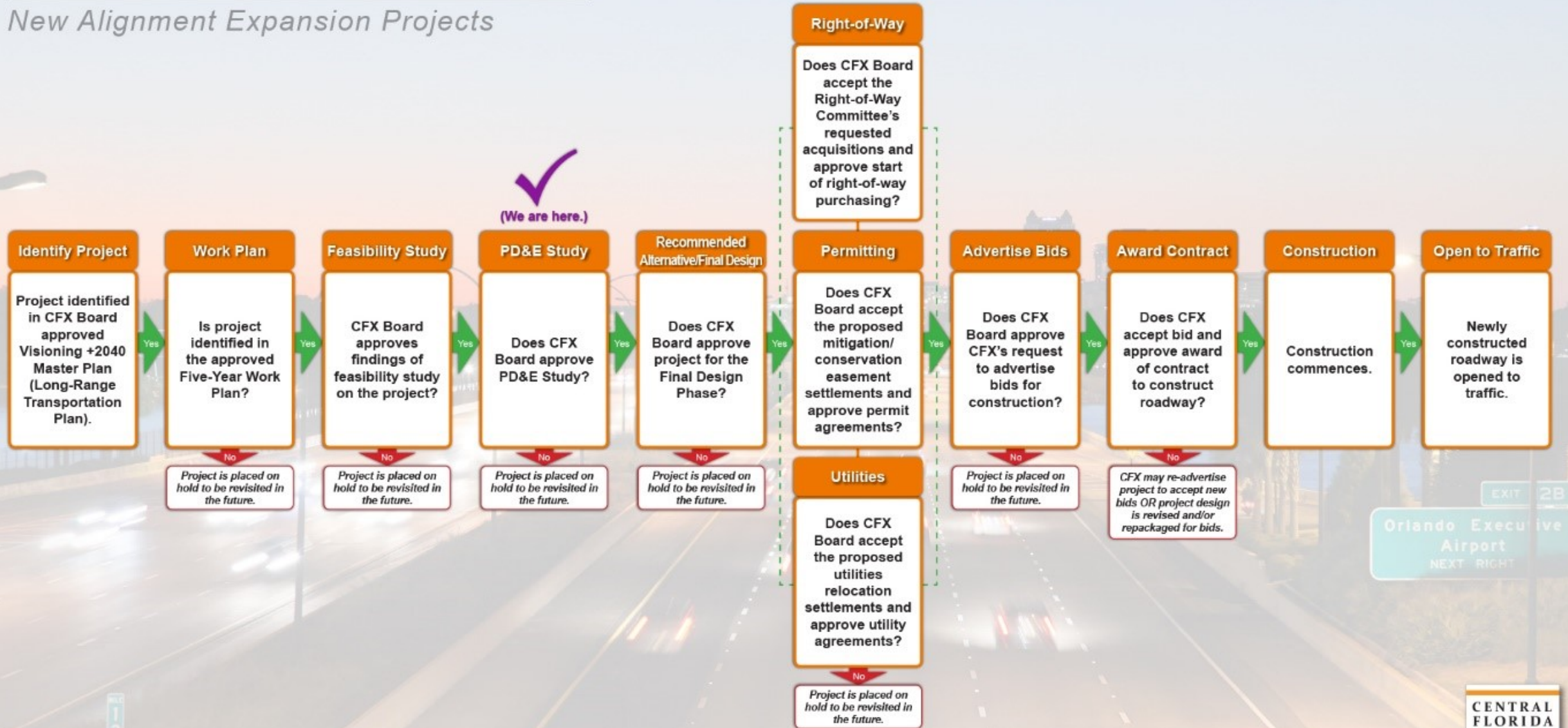
- PD&E and design phases funded
(Design funds indicated as a placeholder pending the outcome of this PD&E Study)

PD&E Study

- Current project phase

PROJECT DEVELOPMENT PROCESS

New Alignment Expansion Projects



EXIT 2B
Orlando Executive Airport
NEXT RIGHT

Project Needs

- 1 Improved connections between area roads
- 2 Future transportation demand
- 3 Consistency with local & regional plans
- 4 Economic viability & job creation
- 5 Intermodal opportunities
- 6 Evacuation & emergency services

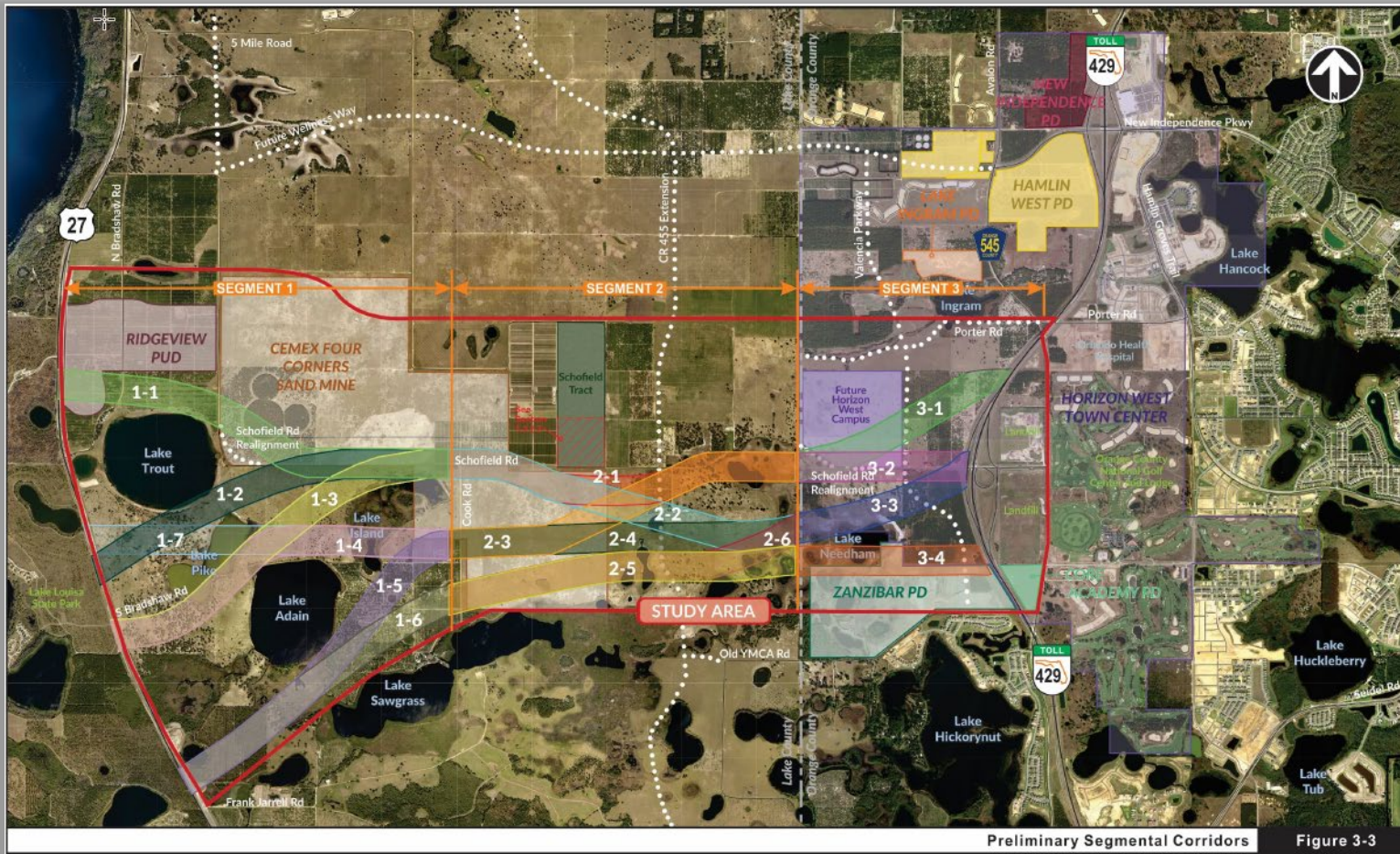
PD&E Study

- The PD&E Study will determine if there is an engineering and environmentally feasible alternative to meet the project needs.
- Two main phases of this PD&E Study:
 - 1. Alternative Corridor Evaluation**

Identify roadway corridors to carry forward for additional analysis
 - 2. Alternatives Analysis**

Identify a preferred project alternative

Alternative Corridor Evaluation



Preliminary Segmental Corridors Figure 3-3

Engineering Evaluation Criteria

- Major Utility Conflicts
- Geometric Considerations
- Floodplain Encroachment
- Traffic Considerations

Socio-Economic Evaluation Criteria

- Approved Planned Unit Developments
- Historical/Archaeological Resources
- Parks/Recreational Facilities
- Right-of-Way Impacts

Environmental Evaluation Criteria

- Wetlands
- Wildlife and Habitat
- Conservation Lands/Mitigation Banks
- Contamination

Stakeholder Outreach

- CEMEX
- FDOT
- Lake County
- Lake-Sumter MPO
- MetroPlan Orlando
- Orange County
- South Florida Water Management District
- Water Conserv II



Public Involvement

- Public involvement and interagency coordination have been an integral part of the assessment process
- First Public Meeting was held August 30, 2018.
- Opportunities for participation will continue to be provided throughout the duration of the study



Advisory Groups

- **Environmental Advisory Group**

Representatives from environmental organizations, as well as local, state and federal agencies

- **Project Advisory Group**

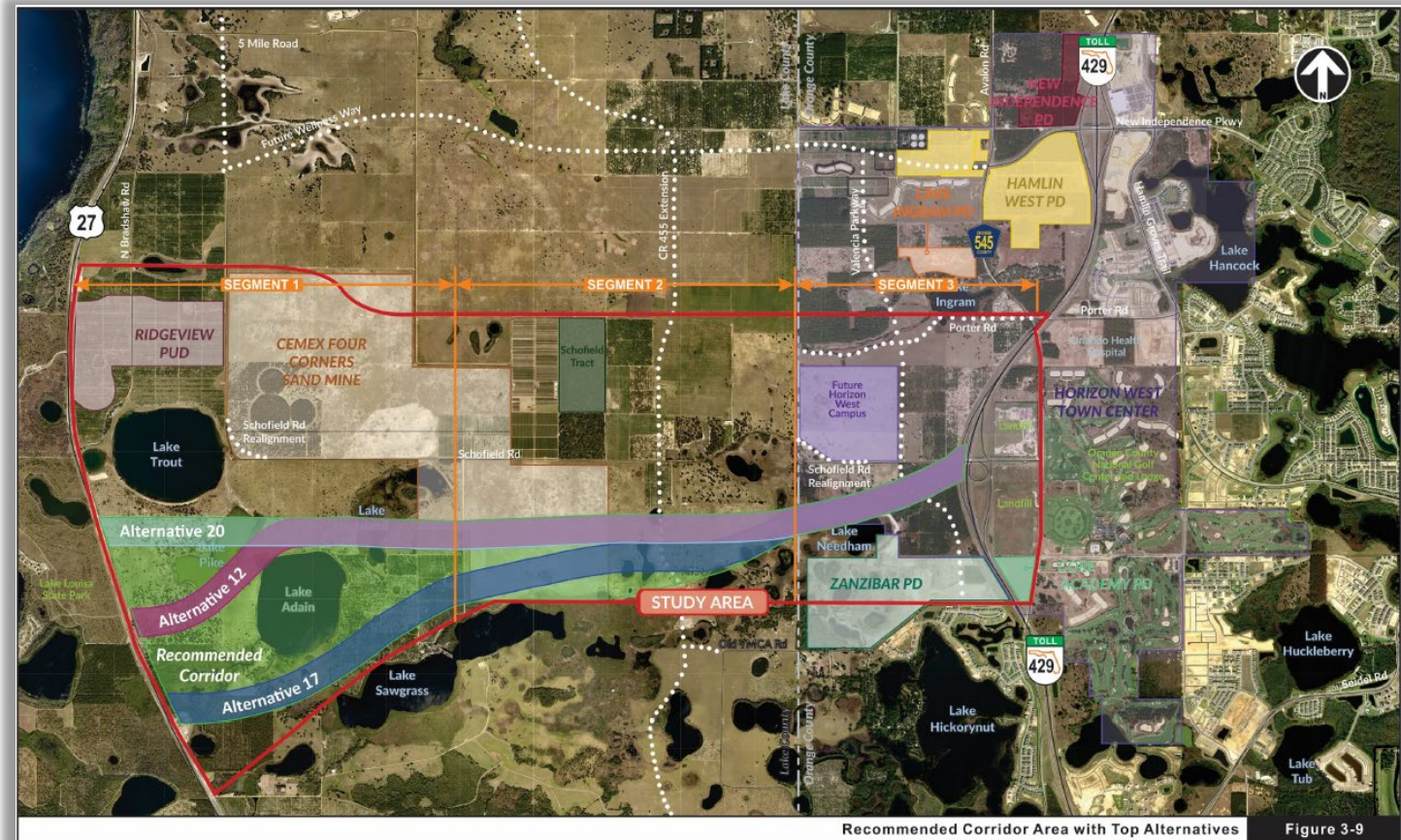
Stakeholders within the project corridor

- First set of meetings held on July 30, 2018
- Second set of meetings held on Feb. 12, 2019



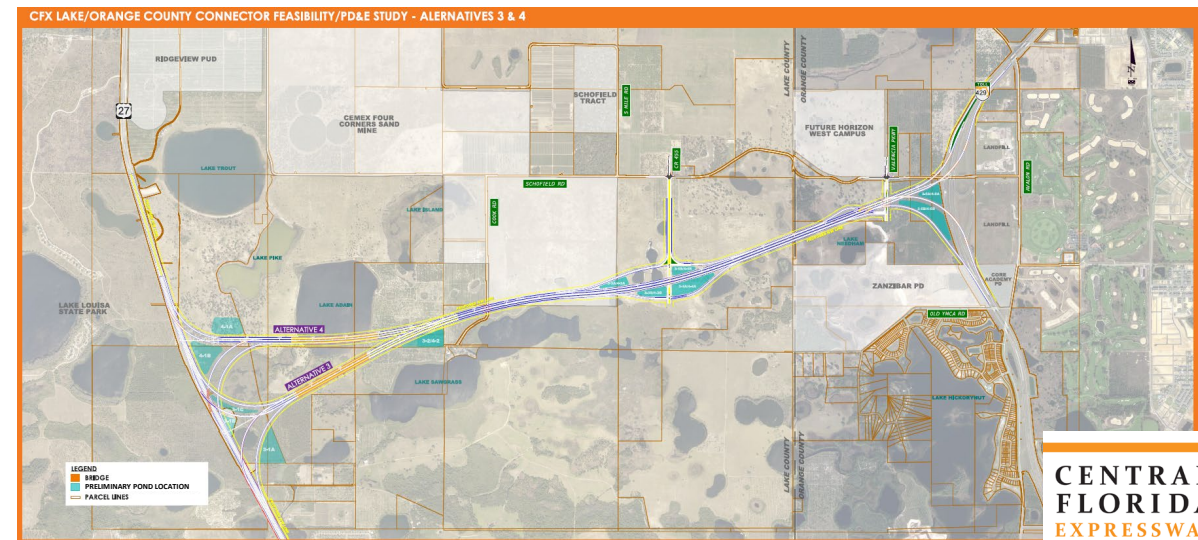
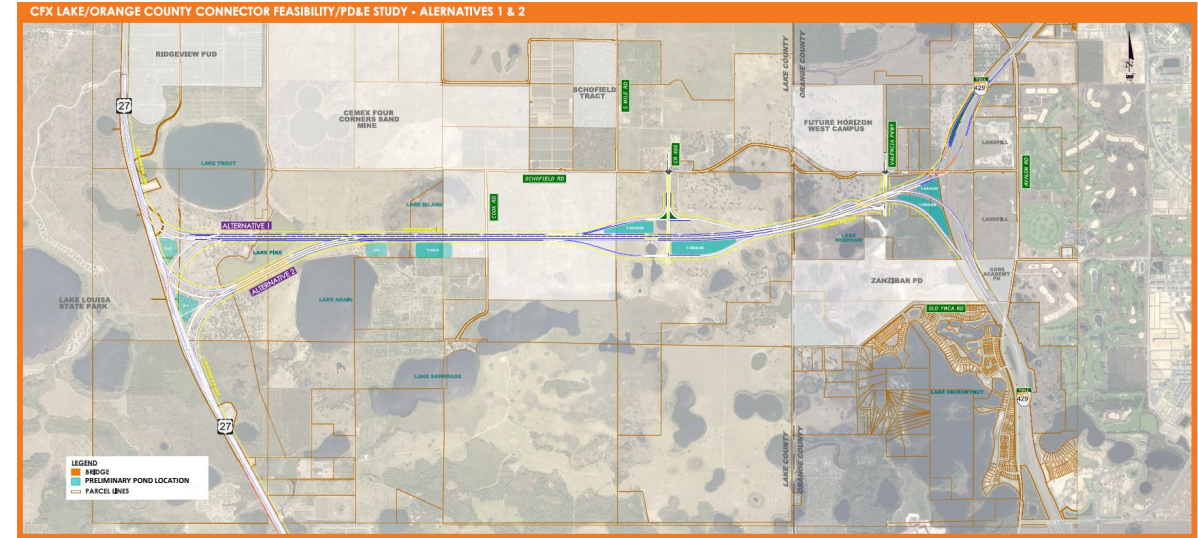
Alternative Corridor Evaluation Results

- Corridors 12, 17 and 20 ranked highest
- The recommended corridor encompasses the area that is bordered by Corridor 20 on the north and Corridor 17 on the south



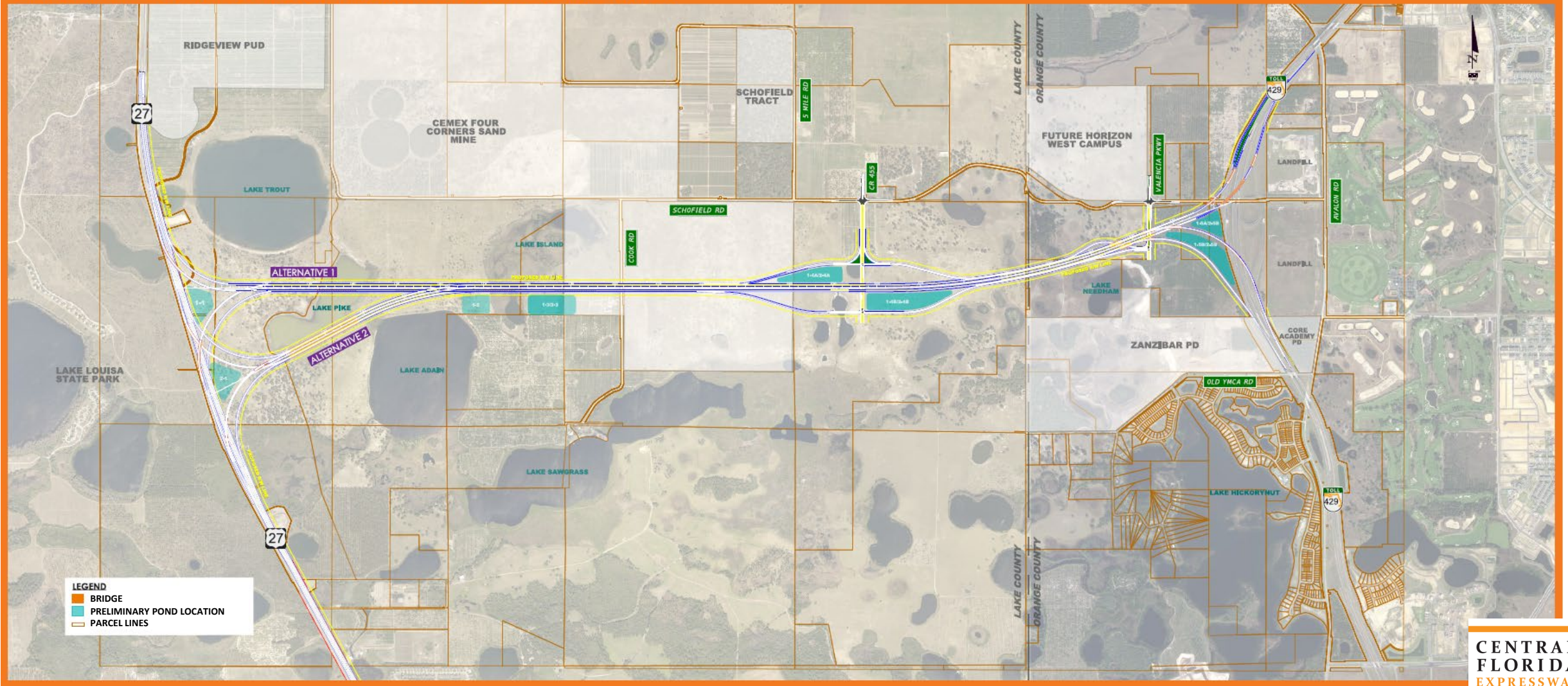
Alternatives Analysis

- Four Build Alternatives
- Proposed interchanges
 - US 27
 - CR 455 future extension
 - Future Valencia Parkway
 - SR 429 (systems interchange)
- No-Action or No-Build Alternative



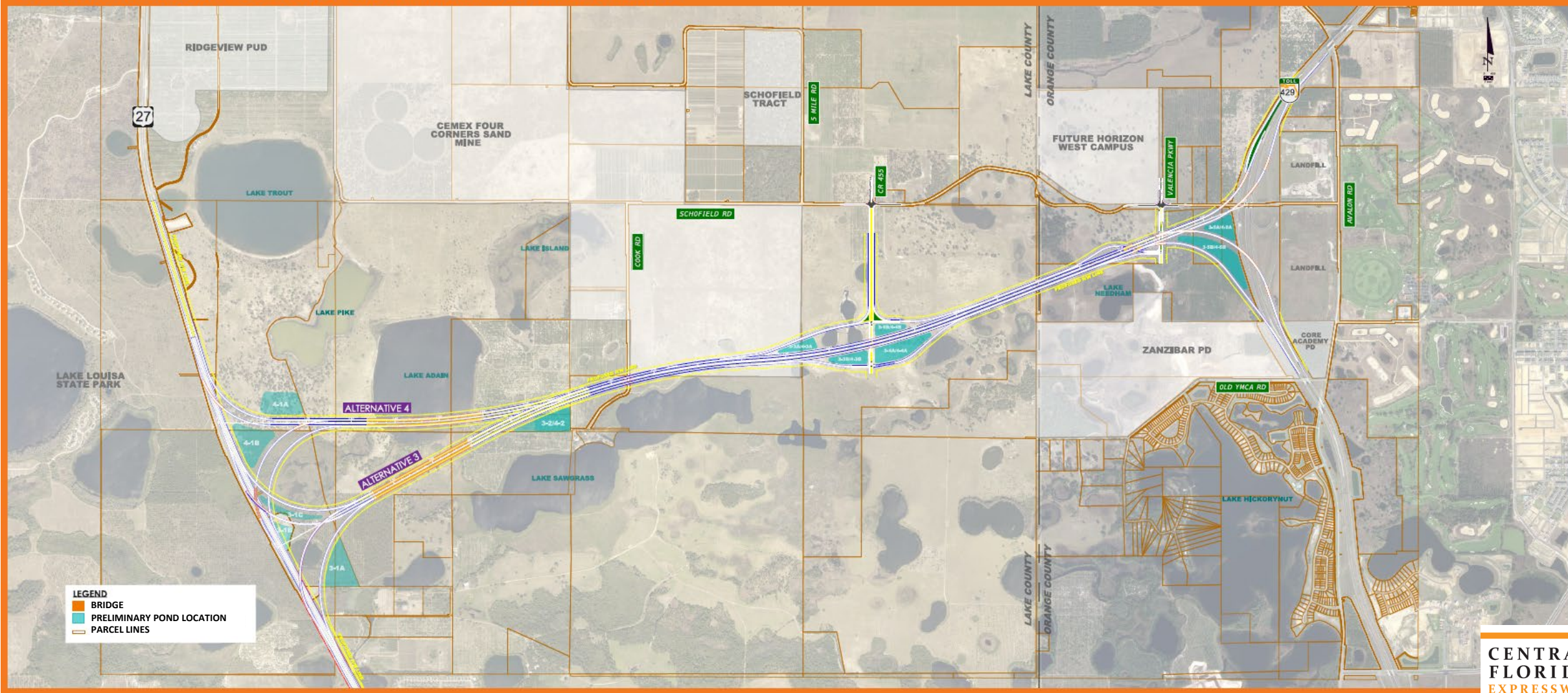
Alternatives 1 & 2

CFX LAKE/ORANGE COUNTY CONNECTOR FEASIBILITY/PD&E STUDY - ALTERNATIVES 1 & 2



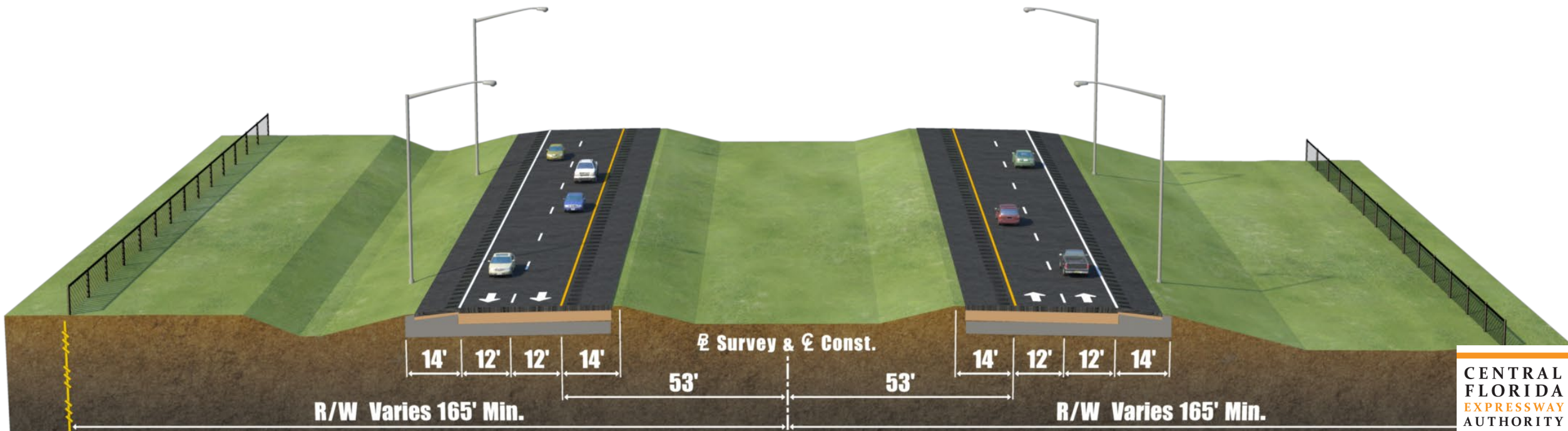
Alternatives 3 & 4

CFX LAKE/ORANGE COUNTY CONNECTOR FEASIBILITY/PD&E STUDY - ALTERNATIVES 3 & 4



Proposed Typical Section

- 330-foot wide right of way
- Allows for future widening to the inside



Alternatives Analysis

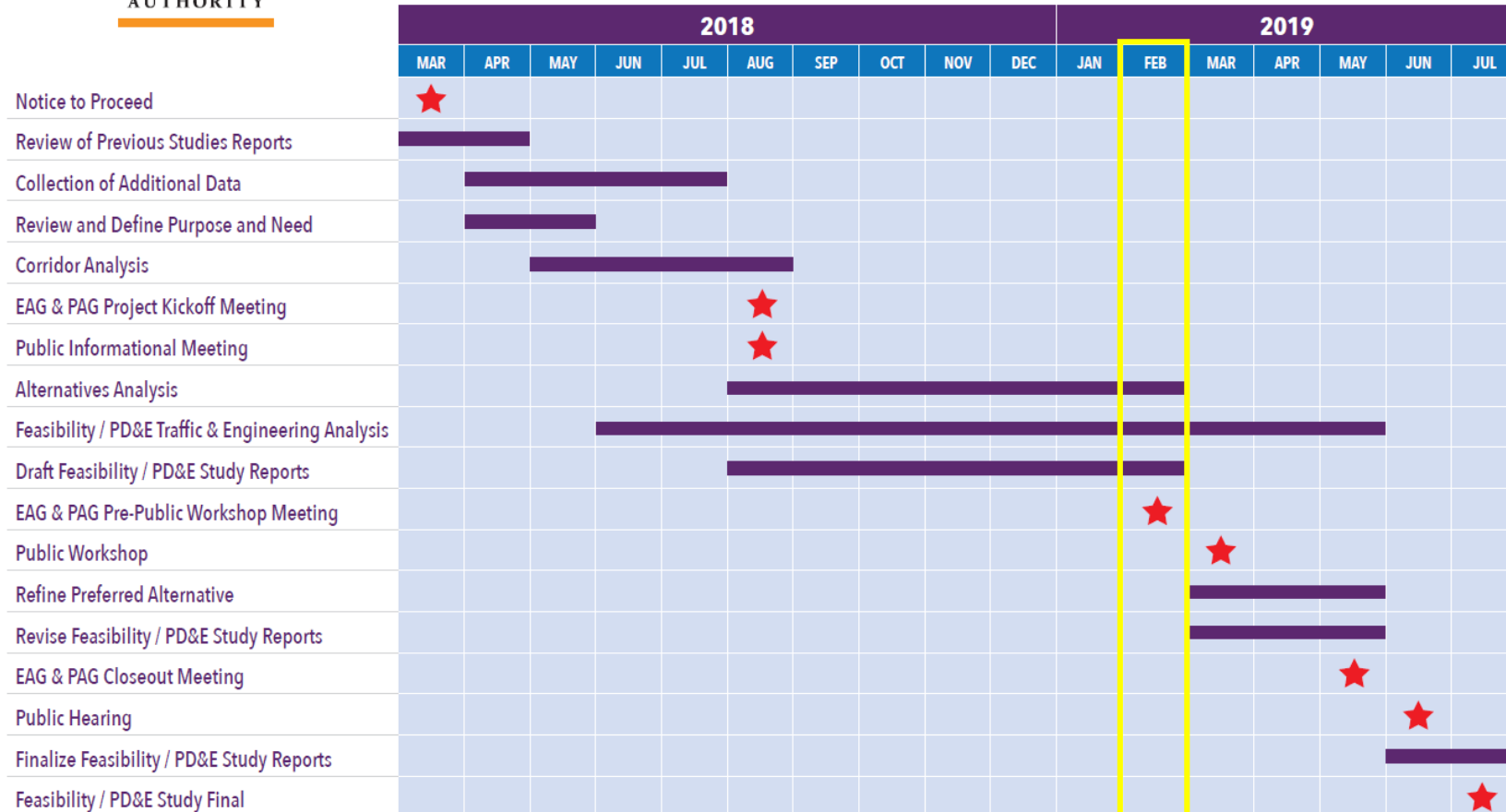
What's Next?

- Receive public input on the project alternatives
- Identify a recommended preferred alternative
- Conduct detailed engineering and environmental analysis
- Prepare engineering and environmental reports

Project Schedule



Lake/Orange County Connector - Study Schedule



Upcoming Public Involvement

- Second Public Information Meeting

**March 7, 2019
5:30 p.m. – 7:30 p.m.
Bridgewater Middle School Cafeteria
5600 Tiny Road
Winter Garden, FL**

- Public Hearing is anticipated to occur in June 2019
- One-On-One or small group meetings available upon request

Study Website

- Study documents and meeting materials are posted to the study website
- Shortened study web address: <https://bit.ly/2MdwCmH>
- CFX web address: www.CFXway.com

Feasibility/Project Development & Environment (PD&E) Study: Lake/Orange County Connector

Study Documents

Environmental Advisory Group (EAG)

Project Advisory Group (PAG)

Public Meetings

- [Project Map](#)
- [Project Schedule](#)
- [Project Development Process](#)
- [Project Fact Sheet](#)
- [Public Workshop #1: Aug. 30, 2018](#)
- [News Release for Public Workshop #1: Aug. 30, 2018](#)
- [Lake/Orange County Connector Study Area Board](#)
- [Lake/Orange County Connector Environmental Constraints Board](#)
- [Lake/Orange County Connector Social Constraints Board](#)
- [Lake/Orange County Connector Project Development Process](#)
- [Lake/Orange County Connector Presentation: Aug. 30, 2018](#)

For More Information

Kathy Putnam

Public Involvement Coordinator

Phone: **407-802-3210**

Email: LakeOrangeStudy@CFXway.com

www.CFXway.com



@LakeOrangeConnector

Participation Assistance

Persons with disabilities needing assistance to participate in any of the proceedings should contact the Lake-Sumter Metropolitan Planning Organization at (352) 315-0170, at least 48 hours in advance of the scheduled meeting.

The image shows a multi-level highway interchange with concrete overpasses and support pillars. A dark SUV is driving on the ground level road. A grassy embankment is visible on the right side. The sky is clear and blue. The logo is centered in the upper half of the image, featuring the text 'CENTRAL FLORIDA EXPRESSWAY AUTHORITY' in a serif font, with 'EXPRESSWAY' in orange and the other words in black. The logo is framed by two horizontal orange bars.

**CENTRAL
FLORIDA
EXPRESSWAY
AUTHORITY**