

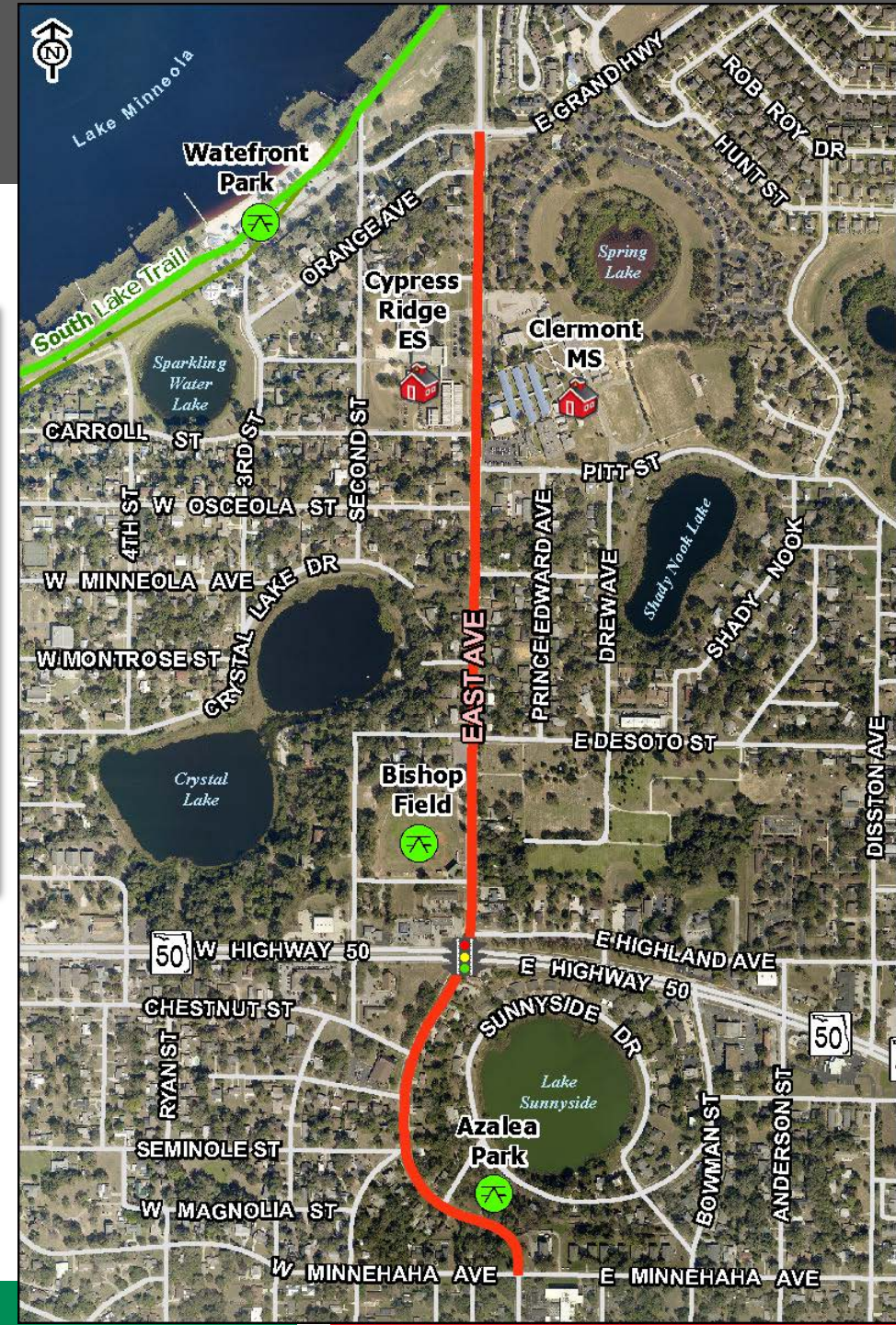
# East Avenue

Complete Streets Study  
Project Update – February 13, 2019



# Project Purpose

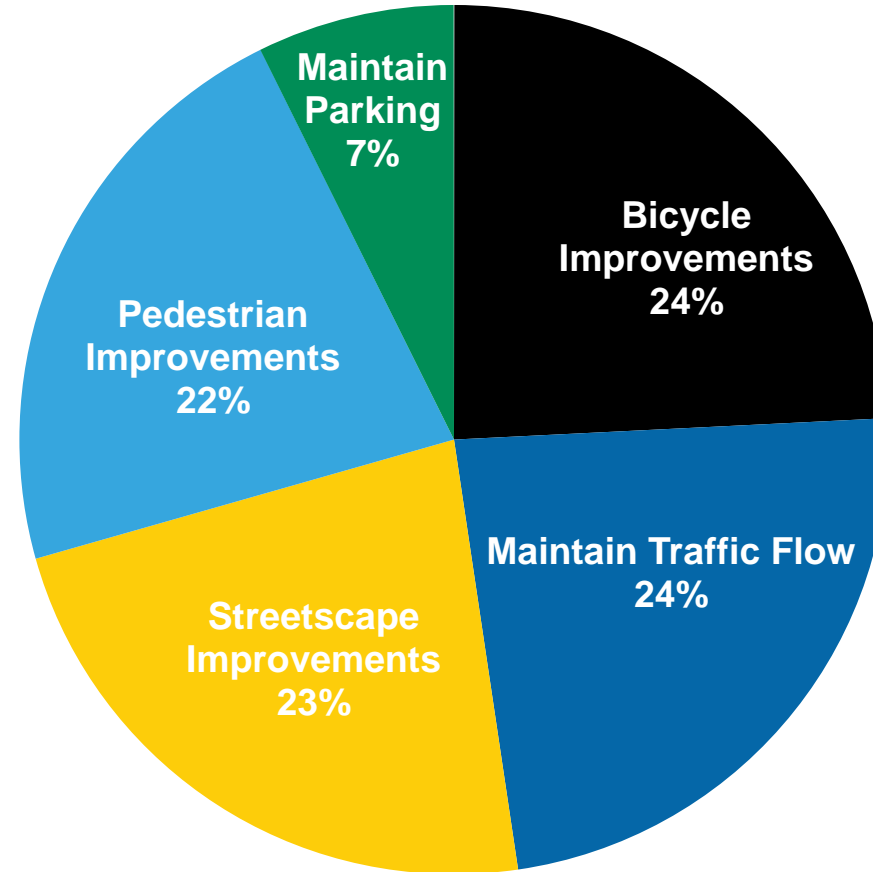
Complete Streets Concept Plan that provides for a **safe, comfortable, and welcoming environment** to meet the **multimodal travel needs for all users** of East Avenue







# How Would You Invest on East Avenue?



*Cumulative results from June 21 Public Meeting & October 27 Outreach at Harvest Festival*

# Remaining Elements / Events

- Concept Development
- Online Interactive Engagement
- City Commission Meeting/Briefing
- Community Workshop
- Meeting with FDOT

*Project anticipated to be complete in Summer 2019*







*Main Street*  
**WILDWOOD**  
COMPLETE STREET PLAN



## Project Update February 13, 2019












## PROJECT PURPOSE

Develop a Complete Streets Concept Plan for Main Street Wildwood that supports the City's vision for  
*"A thriving, interconnected Downtown District that draws people in and encourages them to stay."*

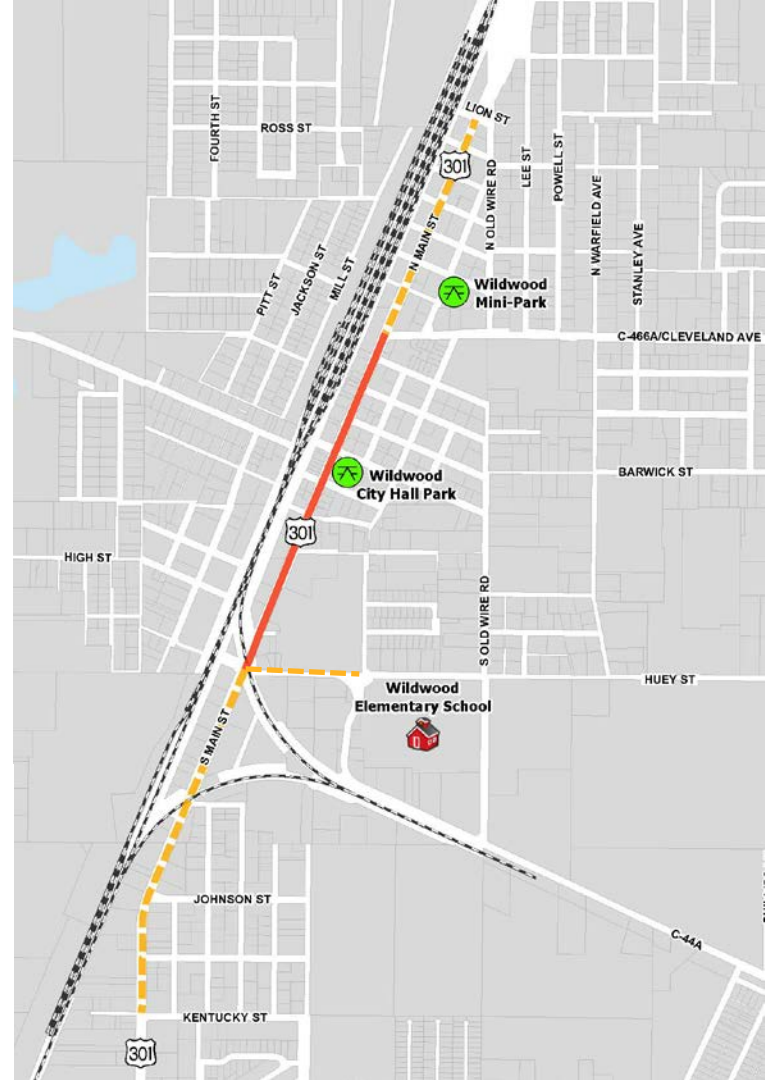
# PROJECT CORRIDOR

- Main Street (US 301 / SR 35) from Cleveland Avenue (CR 466A) to Huey Street (CR 44A)
- Transition Areas
  - South: Main Street from Kentucky Street to Huey Street
  - North: Cleveland Avenue to Lion Street
  - East: CR 44A and Huey Street west of Gamble Street

## Legend

-  Park
-  School
-  Study Corridor
-  Transition Areas
-  Railroad
-  Parcel
-  Water

Source: Sumter County, FL; FDOT; FGDL





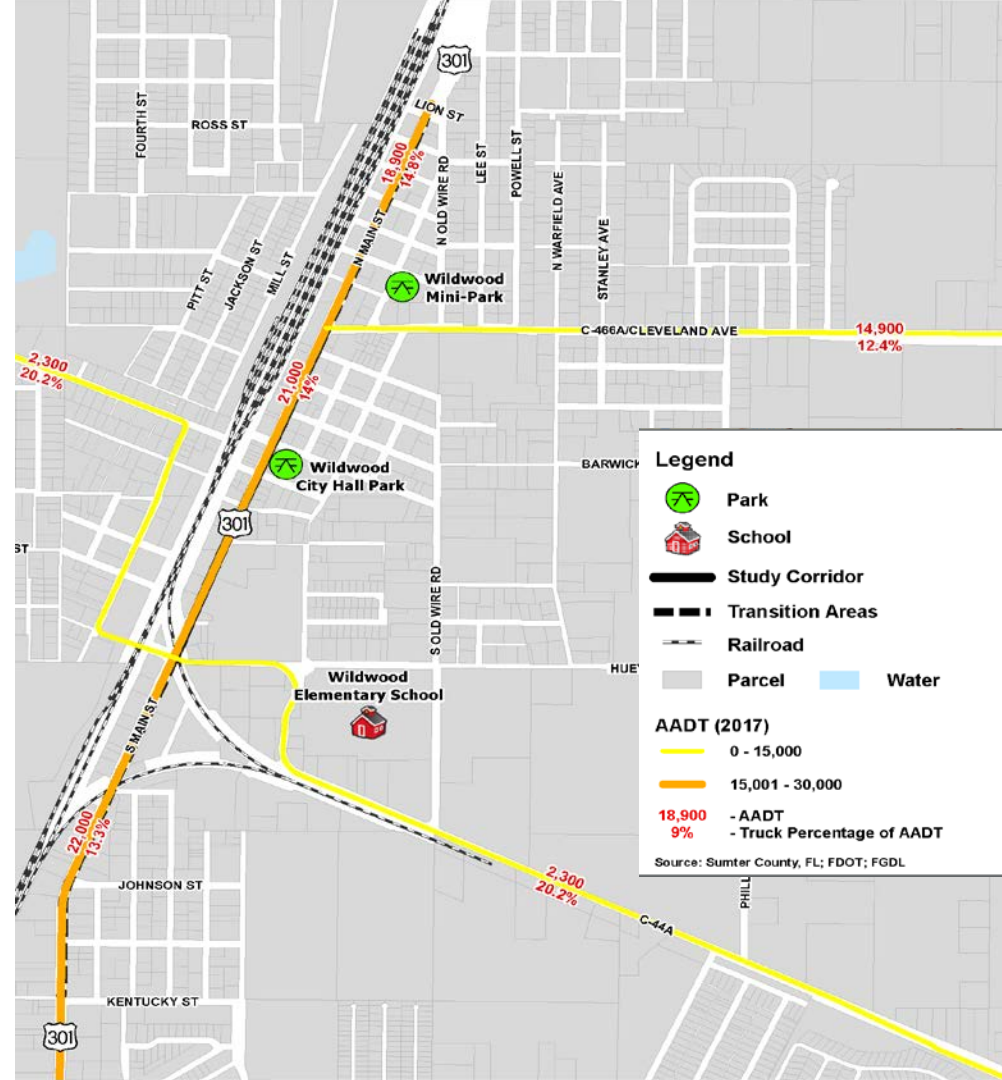
# PROJECT PURPOSE

- Builds on previous planning work:
  - City of Wildwood's Unity, Enhancement, and Redevelopment Action Plan (UERAP)
  - Lake~Sumter MPO's Safe Schools Access Transportation Study
  
- Project will consider:
  - Traffic calming
  - Improving pedestrian crossings
  - Safe school access
  - Access management
  - Multimodal needs



# KEY CONSIDERATIONS

- CSX Railroad
- Traffic Volumes
- Truck Traffic Volumes
- Right-of-Way Constraints





# PROJECT SCHEDULE

