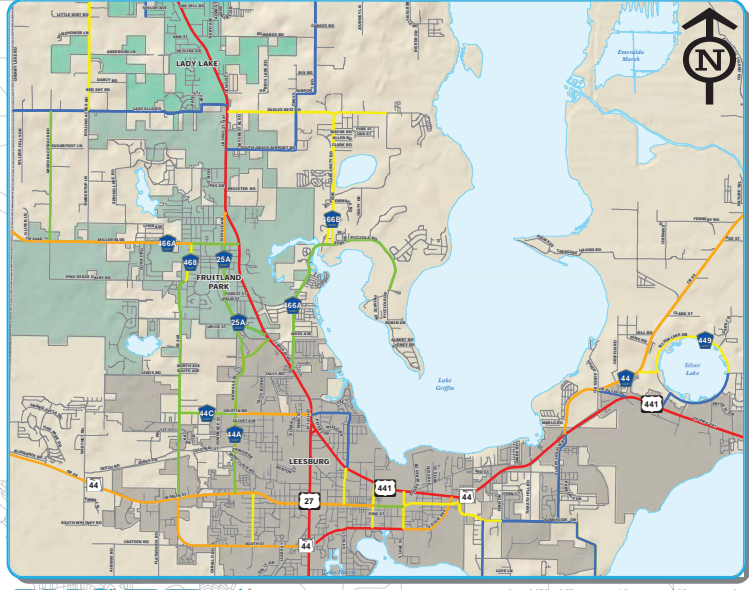
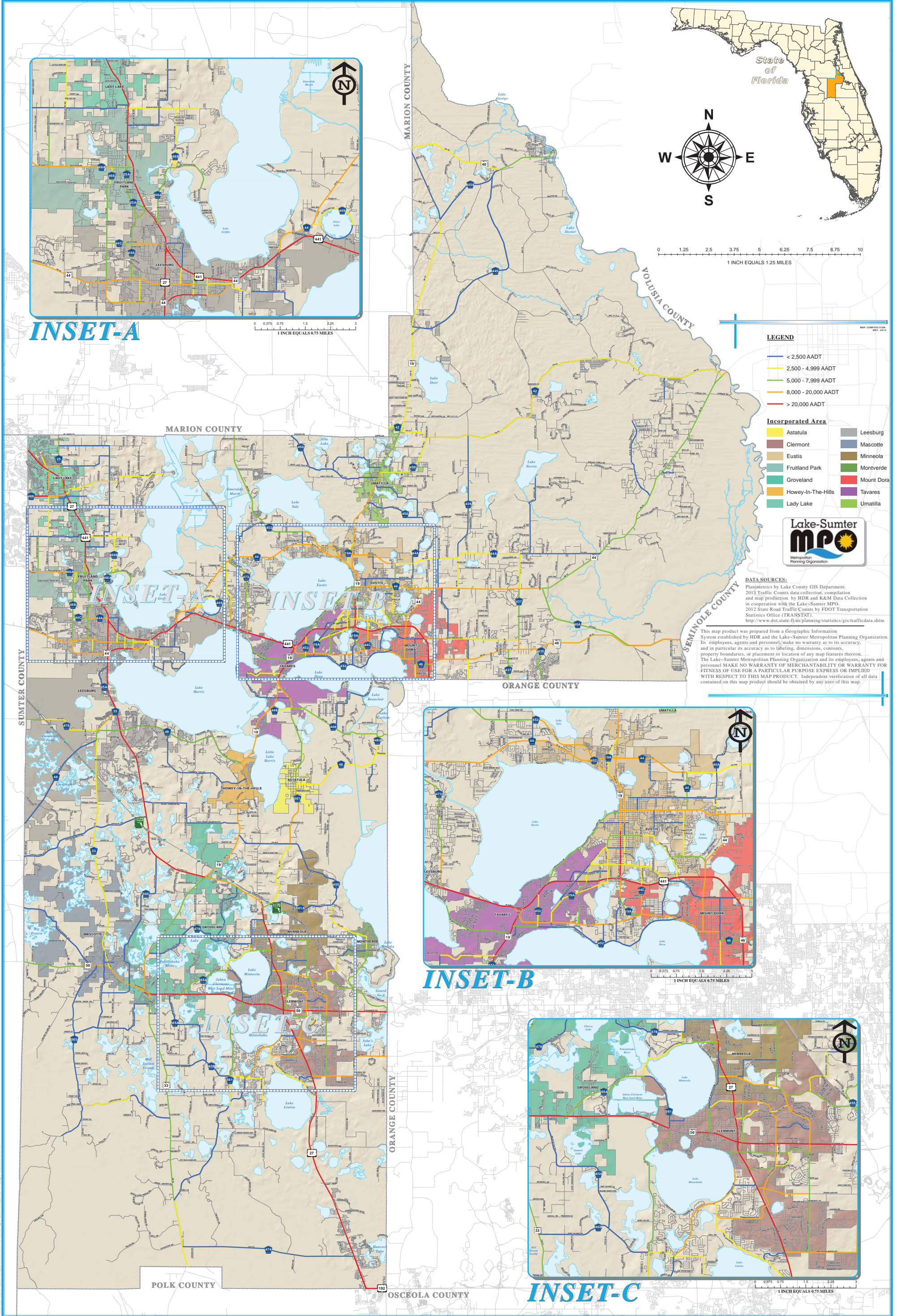




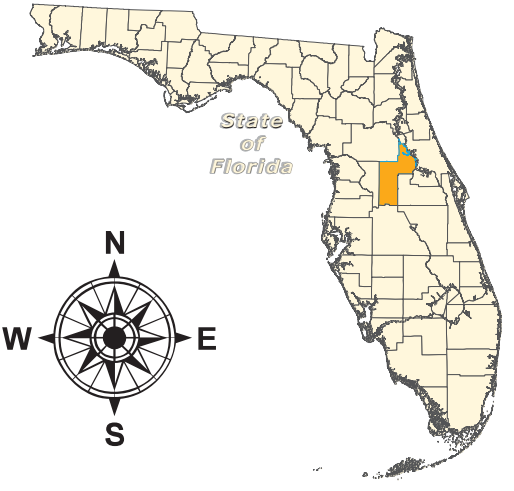
LAKE COUNTY  
FLORIDA

# 2013 Lake County Annual Traffic Counts CLASSIFICATION BY VOLUME



INSET-A

0 0.375 0.75 1.5 2.25 3  
1 INCH EQUALS 0.75 MILES



0 1.25 2.5 3.75 5 6.25 7.5 8.75 10  
1 INCH EQUALS 1.25 MILES

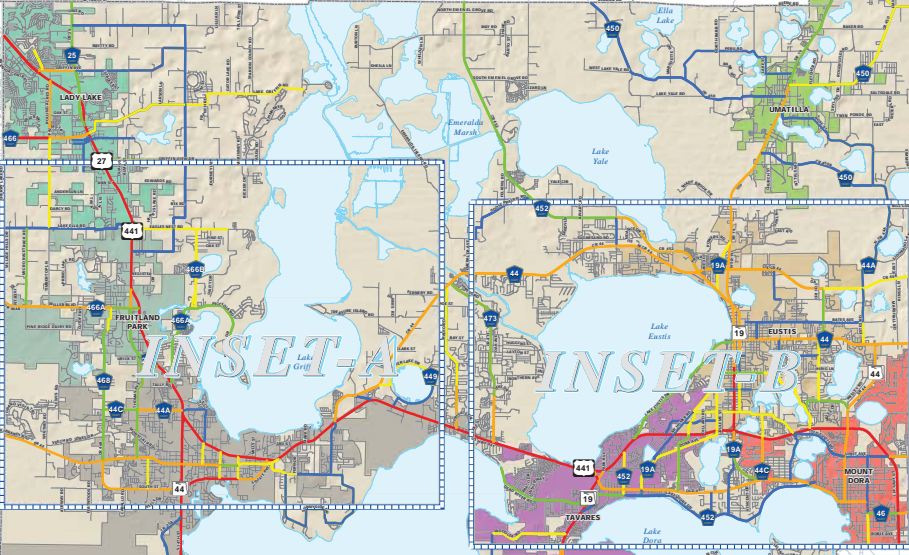
**LEGEND**

- < 2,500 AADT
  - 2,500 - 4,999 AADT
  - 5,000 - 7,999 AADT
  - 8,000 - 20,000 AADT
  - > 20,000 AADT
- Incorporated Area**
- |  |  |
|--|--|
| <span style="background-color: #cccccc; border: 1px solid black; display: inline-block; width: 15px; height: 10px;"></span> Leesburg           | <span style="background-color: #808080; border: 1px solid black; display: inline-block; width: 15px; height: 10px;"></span> Mascotte   |
| <span style="background-color: #a08060; border: 1px solid black; display: inline-block; width: 15px; height: 10px;"></span> Clermont           | <span style="background-color: #6aa84f; border: 1px solid black; display: inline-block; width: 15px; height: 10px;"></span> Minneola   |
| <span style="background-color: #76923c; border: 1px solid black; display: inline-block; width: 15px; height: 10px;"></span> Fruitland Park     | <span style="background-color: #2e8b57; border: 1px solid black; display: inline-block; width: 15px; height: 10px;"></span> Montverde  |
| <span style="background-color: #4682b4; border: 1px solid black; display: inline-block; width: 15px; height: 10px;"></span> Groveland          | <span style="background-color: #d62728; border: 1px solid black; display: inline-block; width: 15px; height: 10px;"></span> Mount Dora |
| <span style="background-color: #ff8c00; border: 1px solid black; display: inline-block; width: 15px; height: 10px;"></span> Howey-In-The-Hills | <span style="background-color: #800080; border: 1px solid black; display: inline-block; width: 15px; height: 10px;"></span> Tavares    |
| <span style="background-color: #90ee90; border: 1px solid black; display: inline-block; width: 15px; height: 10px;"></span> Lady Lake          | <span style="background-color: #9accd3; border: 1px solid black; display: inline-block; width: 15px; height: 10px;"></span> Umatilla   |

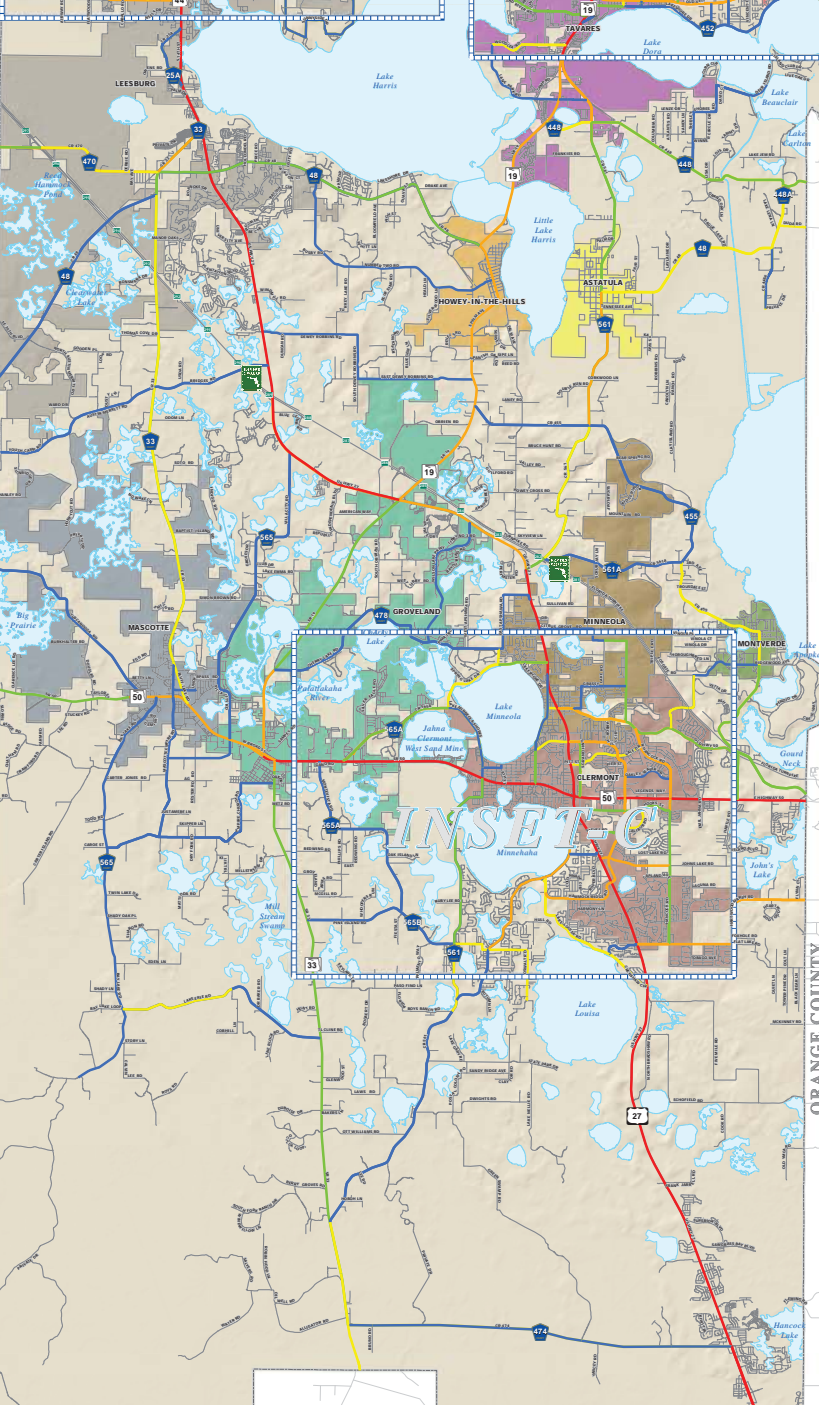


**DATASOURCES:**  
 Planimetrics by Lake County GIS Department.  
 2013 Traffic Counts data collection, compilation and map production by HDR and K&M Data Collection in cooperation with the Lake-Sumter MPO.  
 2012 State Road Traffic Counts by FDOT Transportation Statistics Office (TRANSTAT).  
<http://www.dot.state.fl.us/planning/statistics/gis/traffidata.shtml>

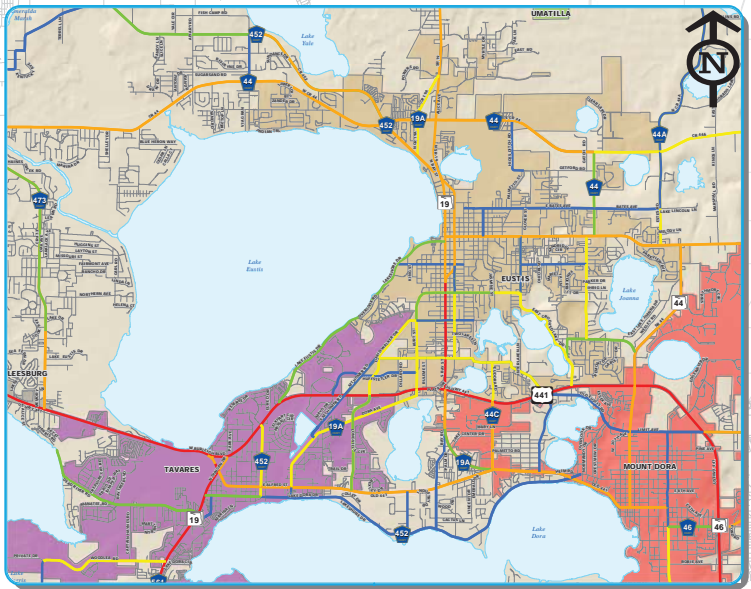
This map product was prepared from a Geographic Information System established by HDR and the Lake-Sumter Metropolitan Planning Organization. Its employees, agents and personnel make no warranty as to its accuracy, and in particular its accuracy as to labeling, dimensions, contours, property boundaries, or placement or location of any map features thereon. The Lake-Sumter Metropolitan Planning Organization and its employees, agents and personnel MAKE NO WARRANTY OF MERCHANTABILITY OR WARRANTY FOR FITNESS OF USE FOR A PARTICULAR PURPOSE EXPRESS OR IMPLIED WITH RESPECT TO THIS MAP PRODUCT. Independent verification of all data contained on this map product should be obtained by any user of this map.



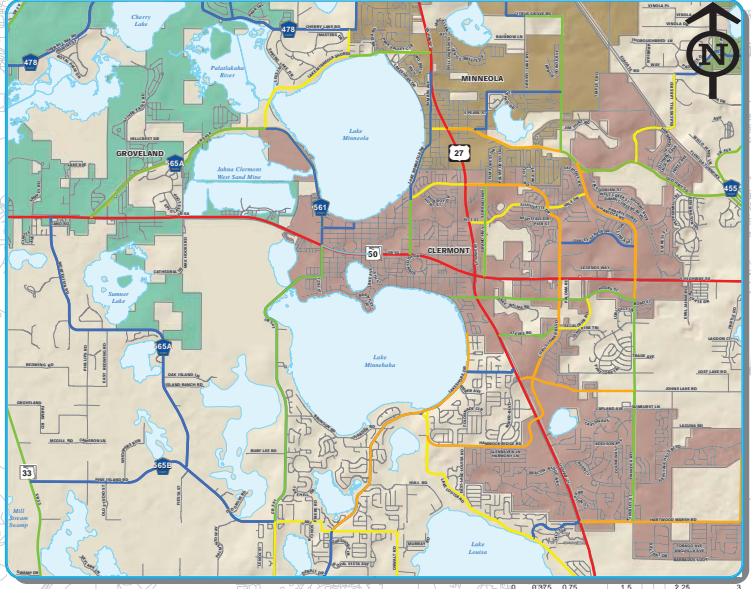
INSET-B



INSET-C



INSET-B



INSET-C