

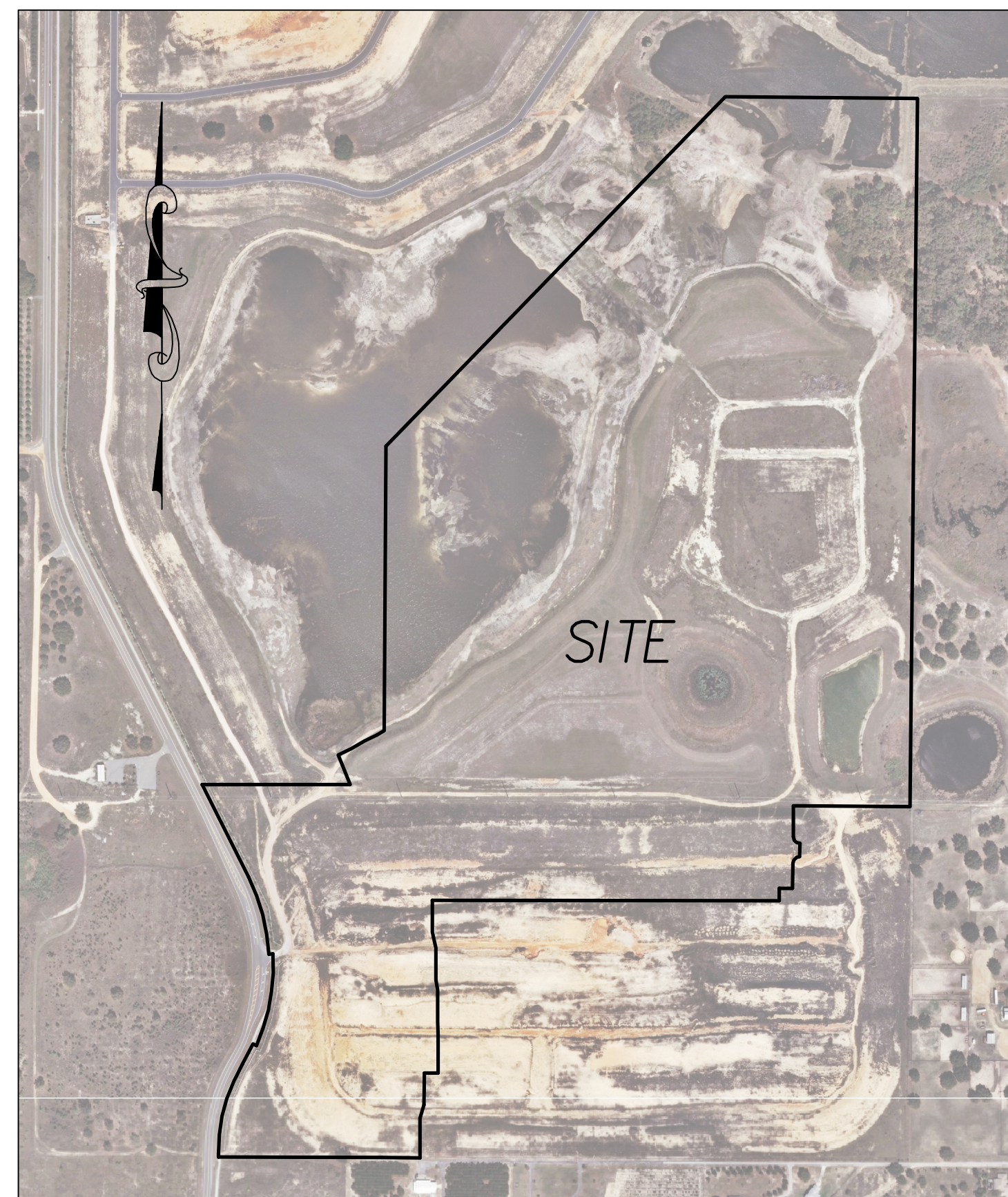
CASCADES OF GROVELAND - PHASE 5

A PORTION OF THE EAST 1/2 OF SECTION 34, TOWNSHIP 21 SOUTH, RANGE 25 EAST AND A PORTION OF THE WEST 1/2 OF SECTION 35, TOWNSHIP 21 SOUTH, RANGE 25 EAST, CITY OF GROVELAND, LAKE COUNTY, FLORIDA

PLAT BOOK: PAGE:
CASCADES OF GROVELAND - PHASE 5 DEDICATION

PLAT NOTES:

- BEARINGS AND COORDINATES SHOWN HEREON ARE BASED ON THE STATE PLANE COORDINATE SYSTEM EAST ZONE NORTH AMERICAN DATUM OF 1983 (NAD 83) WITH 2011 ADJUSTMENT AND DERIVING A BEARING OF N 00°34'07" E ALONG THE EAST LINE OF THE NORTHEAST 1/4 OF SECTION 34, TOWNSHIP 21 SOUTH, RANGE 25 EAST, AS PER PLAT BOOK 56, PAGES 82 THROUGH 86 OF THE PUBLIC RECORDS OF LAKE COUNTY, FLORIDA.
- ALL CURVILINEAR LINES ARE RADIAL UNLESS NOTED AS NON-RADIAL (NR).
- ALL PLATTED UTILITY EASEMENTS, EXCLUSIVE OF PRIVATE EASEMENTS GRANTED TO OR OBTAINED BY A PARTICULAR ELECTRIC, TELEPHONE, GAS OR OTHER PUBLIC UTILITY, SHALL ALSO BE EASEMENTS FOR THE CONSTRUCTION, INSTALLATION, MAINTENANCE, AND OPERATION OF CABLE TELEVISION SERVICES; PROVIDED, HOWEVER, NO SUCH CONSTRUCTION, INSTALLATION, MAINTENANCE, AND OPERATION OF CABLE TELEVISION SERVICES SHALL INTERFERE WITH THE FACILITIES AND SERVICES OF AN ELECTRIC, TELEPHONE, GAS OR OTHER PUBLIC UTILITY. IN THE EVENT A CABLE TELEVISION COMPANY DAMAGES THE FACILITIES OF A PUBLIC UTILITY, IT SHALL BE SOLELY RESPONSIBLE FOR THE DAMAGES PURSUANT TO SECTION 177.091(28), FLORIDA STATUTES. SUCH CONSTRUCTION, INSTALLATION, MAINTENANCE AND OPERATION SHALL COMPLY WITH THE NATIONAL ELECTRICAL SAFETY CODE AS ADOPTED BY THE FLORIDA PUBLIC SERVICE COMMISSION.
- TRACTS A, B, I AND J ARE DESIGNATED AS LANDSCAPE BUFFER TRACTS, AND ARE TO BE OWNED AND MAINTAINED BY THE CASCADES OF GROVELAND HOMEOWNERS' ASSOCIATION, INC., A FLORIDA NOT-FOR-PROFIT CORPORATION.
- TRACTS D, E, AND K ARE DESIGNATED AS OPEN SPACE TRACTS, AND ARE TO BE OWNED AND MAINTAINED BY THE CASCADES OF GROVELAND HOMEOWNERS' ASSOCIATION, INC., A FLORIDA NOT-FOR-PROFIT CORPORATION.
- TRACTS C, L, M AND N ARE DESIGNATED AS CONSERVATION TRACTS, AND ARE TO BE OWNED AND MAINTAINED BY THE CASCADES OF GROVELAND HOMEOWNERS' ASSOCIATION WITH DEVELOPMENT RIGHTS DEDICATED TO THE CITY OF GROVELAND, LAKE COUNTY, FLORIDA. NO CONSTRUCTION, CLEARING, GRADING OR ALTERATION OF SAID TRACTS IS ALLOWED UNLESS APPROVED BY THE CITY OF GROVELAND AND THE OTHER APPLICABLE JURISDICTIONAL AGENCIES. TRACTS C, L, M AND N ARE SUBJECT TO A CONSERVATION EASEMENT IN FAVOR OF THE ST. JOHNS RIVER WATER MANAGEMENT DISTRICT PURSUANT TO SECTION 704.06, FLORIDA STATUTES.
- TRACTS O AND P ARE DESIGNATED AS A STORMWATER MANAGEMENT/OPEN SPACE TRACTS, AND ARE TO BE OWNED AND MAINTAINED BY THE CASCADES AT GROVELAND COMMUNITY DEVELOPMENT DISTRICT.
- TRACT Q IS DESIGNATED AS A COMMON AREA TRACT, AND IS TO BE OWNED AND MAINTAINED BY THE CASCADES OF GROVELAND HOMEOWNERS' ASSOCIATION.
- TRACT R IS DESIGNATED AS A PRIVATE ROADWAY TRACT, AND IS TO BE OWNED AND MAINTAINED BY THE CASCADES OF GROVELAND HOMEOWNERS' ASSOCIATION. AN ACCESS AND UTILITY EASEMENT OVER TRACT R IS DEDICATED TO THE PERPETUAL USE OF THE PUBLIC UTILITY PROVIDERS.
- TRACT S IS DESIGNATED AS A LIFT STATION TRACT, AND IS TO BE OWNED AND MAINTAINED BY THE CITY OF GROVELAND.
- THE OWNERS OF ALL PLATTED LOTS SHALL BE PARTICIPANTS IN THE EDUCATIONAL FACILITY BENEFIT DISTRICT (EFBD) TO BE ESTABLISHED BETWEEN THE CITY AND THE LAKE COUNTY SCHOOL BOARD.
- EVERY OWNER OF A LOT IS COVENANTED TO PARTAKE IN THE EDUCATIONAL FACILITY BENEFIT DISTRICT (EFBD) TO BE ESTABLISHED BETWEEN THE CITY AND THE LAKE COUNTY SCHOOL BOARD, AND TO PROMPTLY PAY THE ANNUAL ASSESSMENT TO BE SET BY THE EFBD.
- A MINIMUM OF FIVE PERCENT OF ASSESSMENTS WILL BE SET ASIDE TO REPLACE LANDSCAPING IN THE COMMON AREAS. THE COMMON AREAS ARE TO INCLUDE LANDSCAPE BUFFER, STREET TREES AND PARKS/RECREATION AREAS.
- LANDS SHOWN AND DESCRIBED HEREON ARE SUBJECT TO THAT CERTAIN EASEMENT AS DESCRIBED IN OFFICIAL RECORDS BOOK 3005, PAGES 1472-1478, OF THE PUBLIC RECORDS OF LAKE COUNTY, FLORIDA.
- LANDS SHOWN AND DESCRIBED HEREON ARE SUBJECT TO THAT CERTAIN OWNER/DEVELOPER/BUILDER AGREEMENT AS RECORDED IN OFFICIAL RECORDS BOOK 4620, PAGES 1375-1394, OF THE PUBLIC RECORDS OF LAKE COUNTY, FLORIDA.



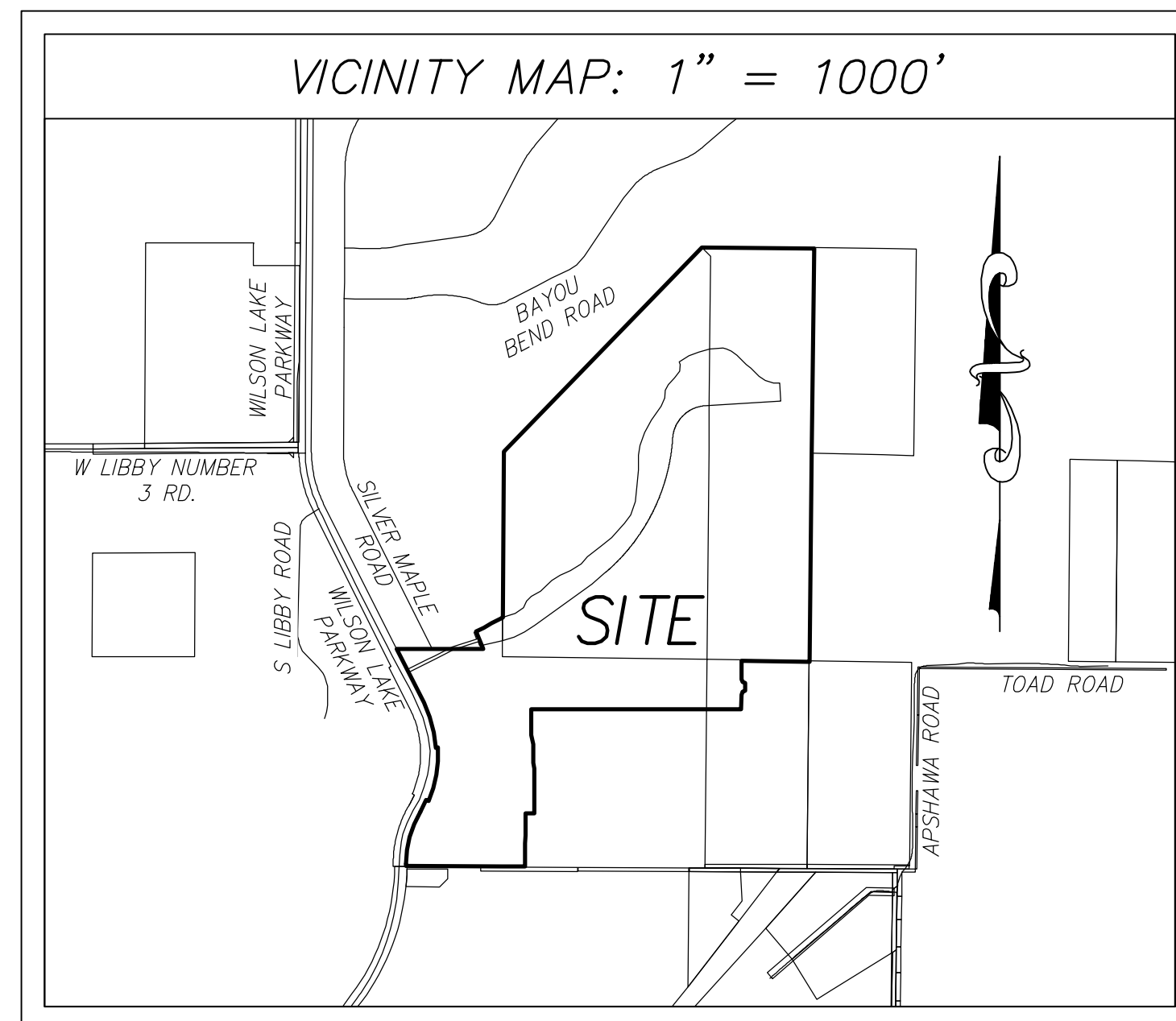
AERIAL: 1" = 500'

LEGAL DESCRIPTION:

A PORTION OF THE EAST 1/2 OF THE SOUTHWEST 1/4 OF SECTION 34, TOWNSHIP 21 SOUTH, RANGE 25 EAST, AND A PORTION OF THE WEST 1/2 OF SECTION 35, TOWNSHIP 21 SOUTH, RANGE 25 EAST, LAKE COUNTY, FLORIDA, MORE PARTICULARLY DESCRIBED AS FOLLOWS:

BEGIN AT THE NORTHWEST CORNER OF THE SOUTHWEST 1/4 OF SECTION 35, TOWNSHIP 21 SOUTH, RANGE 25 EAST, LAKE COUNTY, FLORIDA; SAID POINT ALSO BEING THE SOUTHEAST CORNER OF TRACT C, CASCADES OF GROVELAND - PHASE 3, ACCORDING TO THE PLAT THEREOF, AS RECORDED IN PLAT BOOK 56, PAGES 82-86, OF THE PUBLIC RECORDS OF LAKE COUNTY, FLORIDA; THENCE N44°08'34"E, ALONG THE SOUTHEAST LINE OF SAID TRACT C, A DISTANCE OF 1836.82 FEET TO THE SOUTHWEST CORNER OF TRACT G, THE CASCADES OF GROVELAND - PHASE 2, ACCORDING TO THE PLAT THEREOF, AS RECORDED IN PLAT BOOK 56, PAGES 17-31, OF THE PUBLIC RECORDS OF LAKE COUNTY, FLORIDA; THENCE S89°27'44"E, ALONG THE SOUTH LINE OF SAID TRACT G, A DISTANCE OF 725.16 FEET TO THE NORTHEAST CORNER OF THE WEST 1/2 OF THE SOUTHWEST 1/4 OF AFORESAID SECTION 35; THENCE S00°37'15"W, ALONG THE EAST LINE OF THE WEST 1/2 OF THE SOUTHWEST 1/4 OF THE NORTHWEST 1/4 OF SAID SECTION 35, A DISTANCE OF 1333.52 FEET TO THE SOUTHWEST CORNER THEREOF; THENCE S00°33'07"W, ALONG THE EAST LINE OF THE WEST 1/2 OF THE NORTHWEST 1/4 OF THE SOUTHWEST 1/4 OF AFORESAID SECTION 35, A DISTANCE OF 1337.63 FEET; THENCE DEPARTING SAID EAST LINE, RUN N89°26'53"W, A DISTANCE OF 440.00 FEET; THENCE S00°33'07"W, A DISTANCE OF 117.58 FEET TO THE POINT OF CURVATURE OF A CURVE CONCAVE NORTHEASTERLY, HAVING A RADIUS OF 25.00 FEET, A CENTRAL ANGLE OF 90°29'54", A CHORD BEARING OF S44°41'50"E AND A CHORD DISTANCE OF 35.51 FEET; THENCE SOUTHEASTERLY ALONG THE ARC OF SAID CURVE, A DISTANCE OF 39.49 FEET TO THE END OF SAID CURVE; THENCE DEPARTING SAID CURVE, RUN S01°03'01"W, A DISTANCE OF 50.01 FEET TO A POINT ON A NON-TANGENT CURVE CONCAVE SOUTHEASTERLY, HAVING A RADIUS OF 25.00 FEET, A CENTRAL ANGLE OF 89°30'06", A CHORD BEARING OF S45°18'10"W AND A CHORD DISTANCE OF 35.20 FEET; THENCE SOUTHWESTERLY ALONG THE ARC OF SAID CURVE, A DISTANCE OF 39.05 FEET TO THE POINT OF TANGENCY; THENCE S00°33'07"W, A DISTANCE OF 95.22 FEET; THENCE N89°56'47"W, A DISTANCE OF 50.00 FEET; THENCE S00°33'07"W, A DISTANCE OF 45.46 FEET; THENCE N89°56'47"W, A DISTANCE OF 1307.41 FEET; THENCE S00°33'13"W, A DISTANCE OF 120.00 FEET; THENCE S12°13'23"E, A DISTANCE OF 61.40 FEET; THENCE S00°03'13"W, A DISTANCE OF 120.00 FEET; THENCE S09°25'52"E, A DISTANCE OF 39.65 FEET; THENCE S00°03'13"W, A DISTANCE OF 120.00 FEET; THENCE S01°32'21"E, A DISTANCE OF 50.02 FEET; THENCE S00°03'13"W, A DISTANCE OF 142.81 FEET; THENCE N89°36'40"W, A DISTANCE OF 51.18 FEET; THENCE S00°23'20"W, A DISTANCE OF 120.00 FEET; THENCE S16°47'28"W, A DISTANCE OF 52.12 FEET; THENCE S00°23'20"W, A DISTANCE OF 150.00 FEET TO A POINT ON THE SOUTH LINE OF THE SOUTHWEST 1/4 OF AFORESAID SECTION 35; THENCE N89°36'40"W, ALONG SAID SOUTH LINE, A DISTANCE OF 142.32 FEET TO THE SOUTHEAST CORNER OF THE SOUTHWEST 1/4 OF SECTION 34, TOWNSHIP 21 SOUTH, RANGE 25 EAST; THENCE N89°45'38"W, ALONG THE SOUTH LINE OF THE SOUTHWEST 1/4 OF SAID SECTION 34, A DISTANCE OF 617.58 FEET TO A POINT ON THE EASTERLY RIGHT-OF-WAY OF CHERRY LAKE BOULEVARD (ALSO KNOWN AS WILSON LAKE PARKWAY), AS DESCRIBED IN OFFICIAL RECORDS BOOK 2868, PAGES 164-172 OF THE PUBLIC RECORDS OF LAKE COUNTY, FLORIDA; THENCE NORTHERLY ALONG SAID EASTERLY RIGHT-OF-WAY THE FOLLOWING EIGHT (8) COURSES; N00°00'00"W, A DISTANCE OF 15.04 FEET TO THE POINT OF CURVATURE OF A CURVE CONCAVE SOUTHEASTERLY, HAVING A RADIUS OF 660.00 FEET, A CENTRAL ANGLE OF 30°23'34", A CHORD BEARING OF N15°11'40"E AND A CHORD DISTANCE OF 346.01 FEET; THENCE NORTHEASTERLY ALONG THE ARC OF SAID CURVE, A DISTANCE OF 350.10 FEET TO THE POINT OF REVERSE CURVATURE OF A CURVE CONCAVE NORTHWESTERLY, HAVING A RADIUS OF 740.00 FEET, A CENTRAL ANGLE OF 06°43'40", A CHORD BEARING OF N27°01'37"E AND A CHORD DISTANCE OF 86.84 FEET; THENCE NORTHEASTERLY ALONG THE ARC OF SAID CURVE, A DISTANCE OF 86.89 FEET TO THE END OF SAID CURVE; THENCE DEPARTING SAID CURVE, RUN S86°20'13"E, A DISTANCE OF 15.00 FEET TO A POINT ON A NON-TANGENT CURVE CONCAVE WESTERLY, HAVING A RADIUS OF 755.00 FEET, A CENTRAL ANGLE OF 26°52'09", A CHORD BEARING OF N10°13'42"E AND A CHORD DISTANCE OF 350.83 FEET; THENCE NORTHERLY ALONG THE ARC OF SAID CURVE, A DISTANCE OF 354.06 FEET TO A POINT ON A RADIAL LINE; THENCE DEPARTING SAID CURVE, RUN S86°47'38"W, ALONG SAID RADIAL LINE, A DISTANCE OF 15.00 FEET TO A POINT ON A NON-TANGENT CURVE CONCAVE SOUTHWESTERLY, HAVING A RADIUS OF 740.00 FEET, A CENTRAL ANGLE OF 23°26'51", A CHORD BEARING OF N14°55'48"W AND A CHORD DISTANCE OF 300.73 FEET; THENCE NORTHWESTERLY ALONG THE ARC OF SAID CURVE, A DISTANCE OF 302.83 FEET TO THE POINT OF TANGENCY; THENCE N26°39'13"W, A DISTANCE OF 390.42 FEET; THENCE DEPARTING SAID RIGHT-OF-WAY LINE, RUN S89°56'47"E, A DISTANCE OF 558.63 FEET; THENCE N22°17'18"W, A DISTANCE OF 120.67 FEET; THENCE N64°44'39"E, A DISTANCE OF 54.05 FEET; THENCE N59°01'16"E, A DISTANCE OF 60.57 FEET; THENCE N64°16'04"E, A DISTANCE OF 50.46 FEET; THENCE N61°17'31"E, A DISTANCE OF 32.06 FEET TO A POINT ON THE EAST LINE OF THE SOUTHWEST 1/4 OF AFORESAID SECTION 34; THENCE N00°17'41"E, ALONG SAID EAST LINE, A DISTANCE OF 1073.50 FEET TO THE POINT OF BEGINNING.

SAID LANDS CONTAINING 137.03 ACRES, MORE OR LESS.



SHEET INDEX
SHEET 1 - COVER SHEET, LEGEND/ABBREVIATIONS, LEGAL DESCRIPTION, NOTES
SHEET 2 - OVERALL PLAT/KEY SHEET
SHEETS 3-6 - PLAT DETAIL SHEETS

ZONING AND SETBACKS
ZONING: PLANNED UNIT DEVELOPMENT (PUD)
TOTAL NUMBER OF LOTS: 220
MINIMUM LOT SIZE: NONE MINIMUM LOT WIDTH: 30 FEET
SETBACKS:
FRONT - ANY PART OF THE STRUCTURE (INCLUDING BUT NOT LIMITED TO DWELLING, STORAGE, SIDE LOADING GARAGE, PORCHES, BUT EXCLUDING FRONT LOADING GARAGE); 10 FEET.
FRONT LOADING GARAGES: 20 FEET
SIDE - FOR LOTS 50 FEET OR GREATER IN WIDTH, THE MINIMUM SIDE YARD SETBACK SHALL BE 5 FEET. FOR LOTS NARROWER THAN 50 FEET IN WIDTH, THE SIDE YARD SETBACK MAY BE BETWEEN 0 FEET AND 5 FEET, PROVIDED THAT IN NO EVENT SHALL THE SEPARATION BETWEEN DWELLING UNITS ON ADJACENT LOTS BE LESS THAN 10 FEET.
REAR - 10 FEET
STREET SIDE - 10 FEET

LEGEND AND ABBREVIATIONS:

BSL	BUILDING SETBACK LINE	PCC	POINT OF COMPOUND CURVATURE
CB	CHORD BEARING	PCP	PERMANENT CONTROL POINT
CH	CHORD DISTANCE	PG(S)	PAGE/PAGES
CL	CENTER LINE	PI	POINT OF INTERSECTION
CM	CONCRETE MONUMENT	PLS	PROFESSIONAL LAND SURVEYOR
(D)	DEED	PNT	POINT OF NON-TANGENCY
D.B.	DEED BOOK	POC	POINT ON CURVE
D.E.	DRAINAGE EASEMENT	PRC	POINT OF REVERSE CURVATURE
D.S.L.	DWELLING SETBACK LINE	PRM	PERMANENT REFERENCE MONUMENT
ESMT	EASEMENT	PSM	PROFESSIONAL SURVEYOR MAPPER
FIRM	FLOOD (FLORIDA) INSURANCE RATE MAP	PT	POINT OF TANGENCY
FND	FOUND	R	RADIUS
GSL	GARAGE SETBACK LINE	(R)	RADIAL
ID	IDENTIFICATION	RP	RADIUS POINT
IP	IRON PIPE	R/W	RIGHT OF WAY
IPC	IRON PIPE & CAP	SEC	SECTION-TOWNSHIP-RANGE
IR	IRON ROD	UE	UTILITY EASEMENT
IRC	IRON ROD & CAP	(TYP)	TYPICAL
L	ARC LENGTH	W/	WITH
LB	LICENSED BUSINESS	Δ	CENTRAL ANGLE
(M)	MEASURED	+	BREAK LINE
N/D	NAIL & DISK	■	SET 4"x4" CM (PRM LB 8011)
NO.	NUMBER	□	FOUND 4"x4" CM (PRM LB 1221)
(NR)	NON-RADIAL	○	UNLESS OTHERWISE NOTED
ORB	OFFICIAL RECORDS BOOK	○	SET N/D (PCP LB 8011)
(P)	PLAT	○	FOUND N/D (PCP LB 1221)
P.B.	PLAT BOOK	○	SET 5/8" IRC (PRM LB 8011)
PC	POINT OF CURVATURE	○	SET 5/8" IRC (WITNESS LB 8011)

NOTICE

THIS PLAT, AS RECORDED IN ITS GRAPHIC FORM, IS THE OFFICIAL DEPICTION OF THE SUBDIVIDED LANDS DESCRIBED HEREIN AND WILL IN NO CIRCUMSTANCES BE SUPPLANTED IN AUTHORITY BY ANY OTHER GRAPHIC OR DIGITAL FORM OF THE PLAT.
THERE MAY BE ADDITIONAL RESTRICTIONS THAT ARE NOT RECORDED ON THIS PLAT THAT MAY BE FOUND IN THE PUBLIC RECORDS OF THIS COUNTY.

CERTIFICATE OF APPROVAL BY MUNICIPALITY

THIS IS TO CERTIFY, THAT ON THIS _____, 2016
THE _____ APPROVED THE FOREGOING PLAT.
MAYOR _____
ATTEST _____ CITY CLERK

CERTIFICATE OF APPROVAL BY CLERK OF COURT

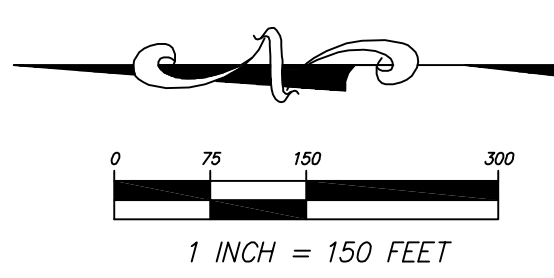
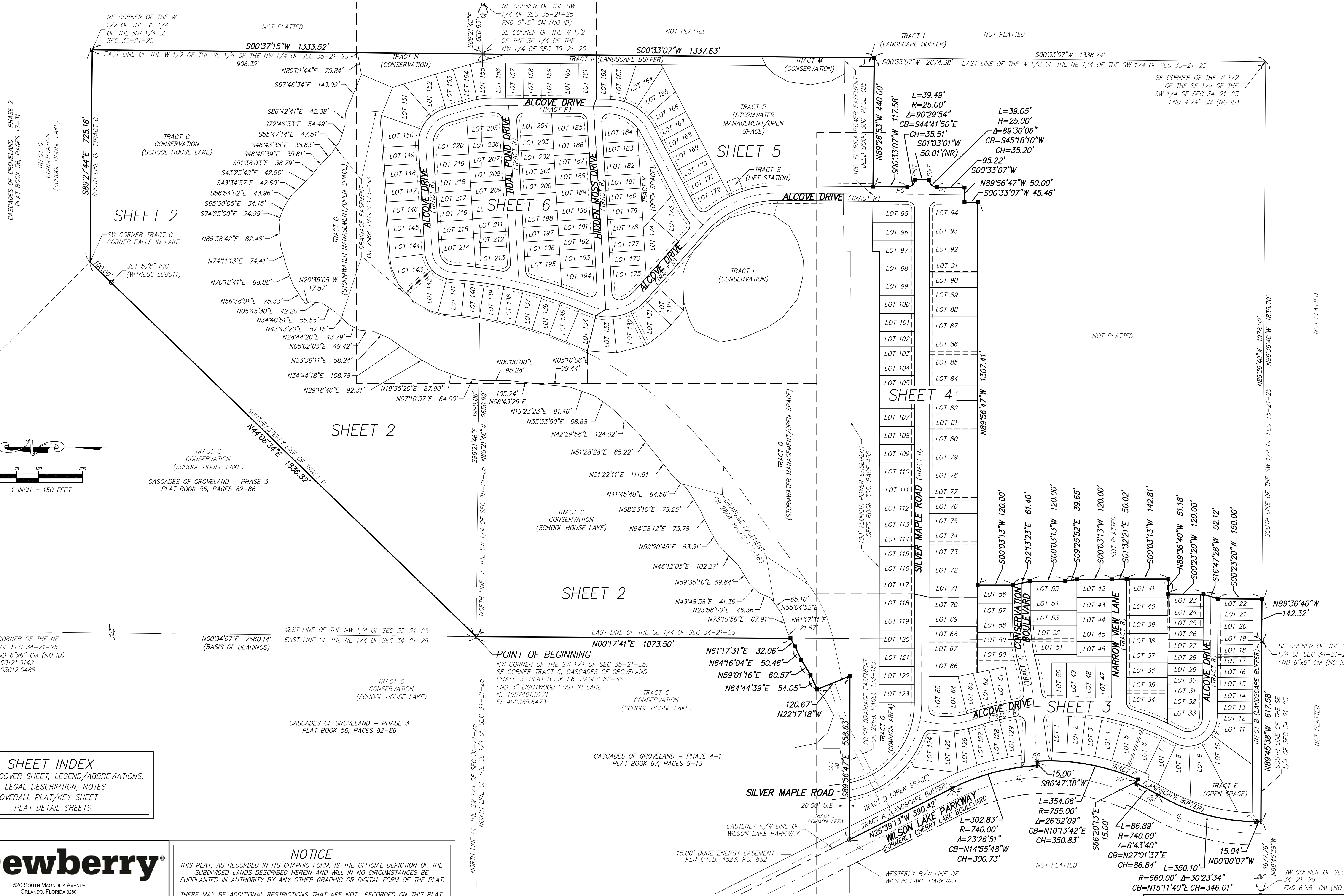
I HEREBY CERTIFY THAT THE FOREGOING PLAT WAS RECORDED IN THE LAKE COUNTY OFFICIAL RECORDS ON _____ FILE NO. _____
CLERK OF COURT IN AND FOR LAKE COUNTY, FLORIDA
BY: _____

520 South Magnolia Avenue
Orlando, Florida 32801
Phone: 407.843.5120 Fax: 407.648.9104
WWW.DEWBERRY.COM
Certificate of Authorization No. LB 8011

CASCADES OF GROVELAND - PHASE 5

A PORTION OF THE EAST 1/2 OF SECTION 34, TOWNSHIP 21 SOUTH, RANGE 25 EAST AND A PORTION OF THE WEST 1/2 OF SECTION 35, TOWNSHIP 21 SOUTH, RANGE 25 EAST, CITY OF GROVELAND, LAKE COUNTY, FLORIDA

PLAT BOOK: PAGE:



SHEET INDEX	
SHEET 1	COVER SHEET, LEGEND/ABBREVIATIONS, LEGAL DESCRIPTION, NOTES
SHEET 2	OVERALL PLAT/KEY SHEET
SHEETS 3-6	PLAT DETAIL SHEETS

NOTICE
 THIS PLAT, AS RECORDED IN ITS GRAPHIC FORM, IS THE OFFICIAL DEPICTION OF THE SUBDIVIDED LANDS DESCRIBED HEREIN AND WILL IN NO CIRCUMSTANCES BE SUPPLANTED IN AUTHORITY BY ANY OTHER GRAPHIC OR DIGITAL FORM OF THE PLAT.
 THERE MAY BE ADDITIONAL RESTRICTIONS THAT ARE NOT RECORDED ON THIS PLAT THAT MAY BE FOUND IN THE PUBLIC RECORDS OF THIS COUNTY.

520 South Magnolia Avenue
 Orlando, Florida 32801
 Phone: 407.843.5120 Fax: 407.648.1014
 WWW.DEWBERRY.COM
 Certificate of Authorization No. LB 8011

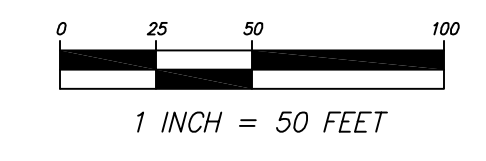
Drawing name: S:\cadd\Cascades Phase 5.splattopwg Plat Sheet 2 Feb 09, 2016 2:14pm by: tconliden

CASCADES OF GROVELAND - PHASE 5

A PORTION OF THE EAST 1/2 OF SECTION 34, TOWNSHIP 21 SOUTH, RANGE 25 EAST AND A PORTION OF THE WEST 1/2 OF SECTION 35, TOWNSHIP 21 SOUTH, RANGE 25 EAST, CITY OF GROVELAND, LAKE COUNTY, FLORIDA

PLAT BOOK: PAGE:

CURVE	LENGTH	RADIUS	DELTA	CHORD	BEARING
C1	63.75'	740.00'	4°56'09"	63.73'	N05°40'27"W
C2	62.69'	755.00'	4°45'27"	62.67'	N00°49'39"W
C3	60.41'	770.00'	4°29'42"	60.39'	N28°08'36"E
C4	15.86'	785.00'	1°09'27"	15.86'	N25°16'28"E
C5	60.73'	785.00'	4°25'57"	60.71'	N22°28'46"E
C6	60.72'	785.00'	4°25'55"	60.71'	N18°02'50"E
C7	59.73'	785.00'	4°21'35"	59.72'	N13°39'05"E
C8	48.25'	785.00'	3°31'18"	48.24'	N09°42'38"E
C9	48.32'	785.00'	3°31'37"	48.32'	N06°11'10"E
C10	48.42'	785.00'	3°32'02"	48.41'	N02°39'21"E
C11	35.35'	25.00'	81°00'58"	32.48'	S42°03'34"W
C12	41.97'	25.00'	96°11'53"	37.21'	N49°20'01"W
C13	4.14'	850.00'	0°16'45"	4.14'	N01°05'42"W
C14	57.44'	850.00'	3°52'18"	57.42'	N00°58'50"E
C15	57.44'	850.00'	3°52'18"	57.42'	N04°51'07"E
C16	57.44'	850.00'	3°52'18"	57.42'	N08°34'25"E
C17	71.18'	850.00'	4°47'54"	71.16'	N13°03'30"E
C18	72.40'	850.00'	4°52'50"	72.38'	N17°53'52"E
C19	72.40'	850.00'	4°52'50"	72.38'	N22°46'42"E
C20	45.32'	850.00'	3°03'17"	45.31'	N26°44'45"E
C21	205.75'	100.00'	117°53'04"	171.33'	S30°40'08"E
C22	7.81'	100.00'	4°28'37"	7.81'	S26°02'05"W
C23	44.92'	100.00'	25°44'10"	44.54'	S10°55'41"W
C24	44.92'	100.00'	25°44'10"	44.54'	S14°48'29"E
C25	44.92'	100.00'	25°44'10"	44.54'	S40°32'38"E
C26	15.06'	100.00'	8°37'37"	15.04'	S57°43'32"E
C27	28.51'	100.00'	16°20'00"	28.41'	S70°12'20"E
C28	19.62'	100.00'	11°14'20"	19.58'	S83°59'30"E
C29	154.31'	75.00'	117°53'04"	128.50'	S30°40'08"E
C30	102.87'	50.00'	117°53'04"	85.66'	S30°40'08"E
C31	182.63'	900.00'	11°37'36"	182.22'	N22°27'36"E
C32	51.97'	900.00'	3°18'32"	51.97'	N26°37'08"E
C33	130.66'	900.00'	8°19'05"	130.54'	N20°48'20"E
C34	437.76'	850.00'	29°30'28"	432.94'	S13°31'10"W
C35	32.03'	25.00'	73°24'25"	29.88'	S53°21'00"W
C36	43.73'	25.00'	100°13'19"	38.36'	S39°50'08"E
C37	186.14'	900.00'	11°51'01"	185.81'	N04°21'02"E
C38	25.91'	900.00'	1°38'59"	25.91'	N09°27'03"E
C39	50.38'	900.00'	3°12'26"	50.37'	N07°01'20"E
C40	50.11'	900.00'	3°11'25"	50.11'	N03°49'25"E
C41	50.01'	900.00'	3°11'01"	50.00'	N00°38'11"E
C42	9.73'	900.00'	0°37'10"	9.73'	N01°15'54"W
C43	37.37'	25.00'	85°39'07"	33.99'	S41°15'05"W
C44	102.70'	655.00'	8°59'00"	102.59'	N79°35'08"E
C45	155.35'	595.00'	14°57'35"	154.91'	S82°34'26"W
C46	27.84'	595.00'	2°40'53"	27.84'	S76°26'05"W
C47	50.76'	595.00'	4°53'17"	50.75'	S80°13'09"W
C48	50.20'	595.00'	4°50'04"	50.19'	S85°04'50"W
C49	26.54'	595.00'	2°33'21"	26.54'	S88°46'32"W
C50	127.63'	625.00'	11°41'59"	127.40'	N80°56'38"E
C51	163.18'	625.00'	14°57'35"	162.72'	S82°34'26"W
C52	171.02'	655.00'	14°57'35"	170.53'	S82°34'26"W
C53	1.59'	655.00'	0°08'21"	1.59'	S89°59'03"W
C54	50.05'	655.00'	4°22'42"	50.04'	S87°43'31"W
C55	50.36'	655.00'	4°24'18"	50.35'	S83°20'01"W
C56	50.97'	655.00'	4°27'32"	50.96'	S78°54'05"W
C57	18.04'	655.00'	1°34'41"	18.04'	S75°52'59"W
C58	91.41'	595.00'	8°48'08"	91.32'	N79°29'42"E
C59	38.27'	25.00'	87°42'38"	34.64'	S52°14'55"E
C60	161.81'	900.00'	10°18'04"	161.59'	N13°32'38"W
C61	21.92'	900.00'	1°23'43"	21.92'	N09°05'28"W
C62	49.44'	900.00'	3°08'51"	49.44'	N11°21'45"W



CURVE	LENGTH	RADIUS	DELTA	CHORD	BEARING
C63	49.44'	900.00'	3°08'51"	49.44'	N14°30'36"W
C64	41.01'	900.00'	2°36'58"	41.00'	N17°23'21"W
C65	126.53'	275.00'	26°21'48"	125.42'	S05°30'46"E
C66	17.65'	275.00'	3°40'36"	17.64'	S16°51'22"E
C67	75.10'	275.00'	15°38'48"	74.87'	S07°11'40"E
C68	33.79'	275.00'	7°02'24"	33.77'	S04°08'56"W
C69	37.09'	25.00'	85°00'52"	33.78'	S50°10'33"W
C70	14.92'	325.00'	2°37'47"	14.91'	S88°37'54"E
C71	57.13'	300.00'	10°54'40"	57.04'	S84°29'27"E
C72	97.60'	325.00'	17°12'24"	97.24'	S62°16'05"E
C73	34.67'	25.00'	79°27'57"	31.96'	N31°08'19"W

CURVE	LENGTH	RADIUS	DELTA	CHORD	BEARING
C74	154.79'	325.00'	27°17'19"	153.33'	S05°03'00"E
C75	28.95'	325.00'	5°06'11"	28.94'	S06°02'34"W
C76	48.44'	325.00'	8°32'26"	48.40'	S00°46'44"E
C77	48.44'	325.00'	8°32'26"	48.40'	S09°19'10"E
C78	28.96'	325.00'	5°06'11"	28.95'	S16°08'32"E
C79	142.67'	850.00'	9°37'01"	142.50'	N13°53'10"W
C80	23.72'	850.00'	1°35'56"	23.72'	N17°53'42"W
C81	57.44'	850.00'	3°52'18"	57.42'	N15°09'35"W
C82	57.44'	850.00'	3°52'18"	57.42'	N11°17'18"W
C83	4.08'	850.00'	0°16'30"	4.08'	N09°12'54"W
C84	43.69'	25.00'	100°08'07"	38.34'	N40°59'24"E
C85	35.26'	25.00'	80°48'00"	32.41'	S48°32'32"E
C86	48.51'	780.00'	3°33'48"	48.50'	N08°34'19"W
C87	48.69'	780.00'	3°34'35"	48.68'	N12°08'31"W

CURVE	LENGTH	RADIUS	DELTA	CHORD	BEARING
C88	60.54'	780.00'	4°26'50"	60.53'	N16°09'13"W
C89	70.06'	780.00'	5°08'46"	70.03'	N20°57'01"W
C90	42.61'	780.00'	3°07'49"	42.61'	N25°05'19"W
C163	155.30'	300.00'	29°39'33"	153.57'	S03°51'53"E
C167	40.65'	770.00'	3°01'30"	40.65'	N27°24'30"E
C168	19.76'	770.00'	1°28'12"	19.75'	N29°39'21"E
C169	104.67'	630.00'	9°31'11"	104.55'	N25°37'51"W
C170	165.07'	630.00'	15°00'46"	164.60'	N13°21'53"W
C171	49.61'	630.00'	4°30'41"	49.59'	N03°36'09"W

NOTICE
THIS PLAT, AS RECORDED IN ITS GRAPHIC FORM, IS THE OFFICIAL DEPICTION OF THE SUBDIVIDED LANDS DESCRIBED HEREIN AND WILL IN NO CIRCUMSTANCES BE SUPPLANTED IN AUTHORITY BY ANY OTHER GRAPHIC OR DIGITAL FORM OF THE PLAT.
THERE MAY BE ADDITIONAL RESTRICTIONS THAT ARE NOT RECORDED ON THIS PLAT THAT MAY BE FOUND IN THE PUBLIC RECORDS OF THIS COUNTY.

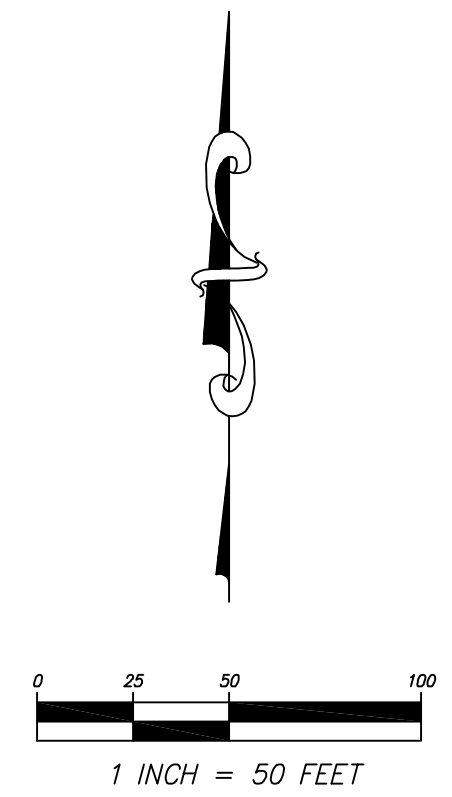
SHEET INDEX
SHEET 1 - COVER SHEET, LEGEND/ABBREVIATIONS, LEGAL DESCRIPTION, NOTES
SHEET 2 - OVERALL PLAT/KEY SHEET
SHEETS 3-6 - PLAT DETAIL SHEETS

520 SOUTH MAGNOLIA AVENUE
ORLANDO, FLORIDA 32801
PHONE: 407.943.5120 FAX: 407.648.1014
WWW.DEWBERRY.COM
CERTIFICATE OF AUTHORIZATION NO. LB 8011

CASCADES OF GROVELAND - PHASE 5

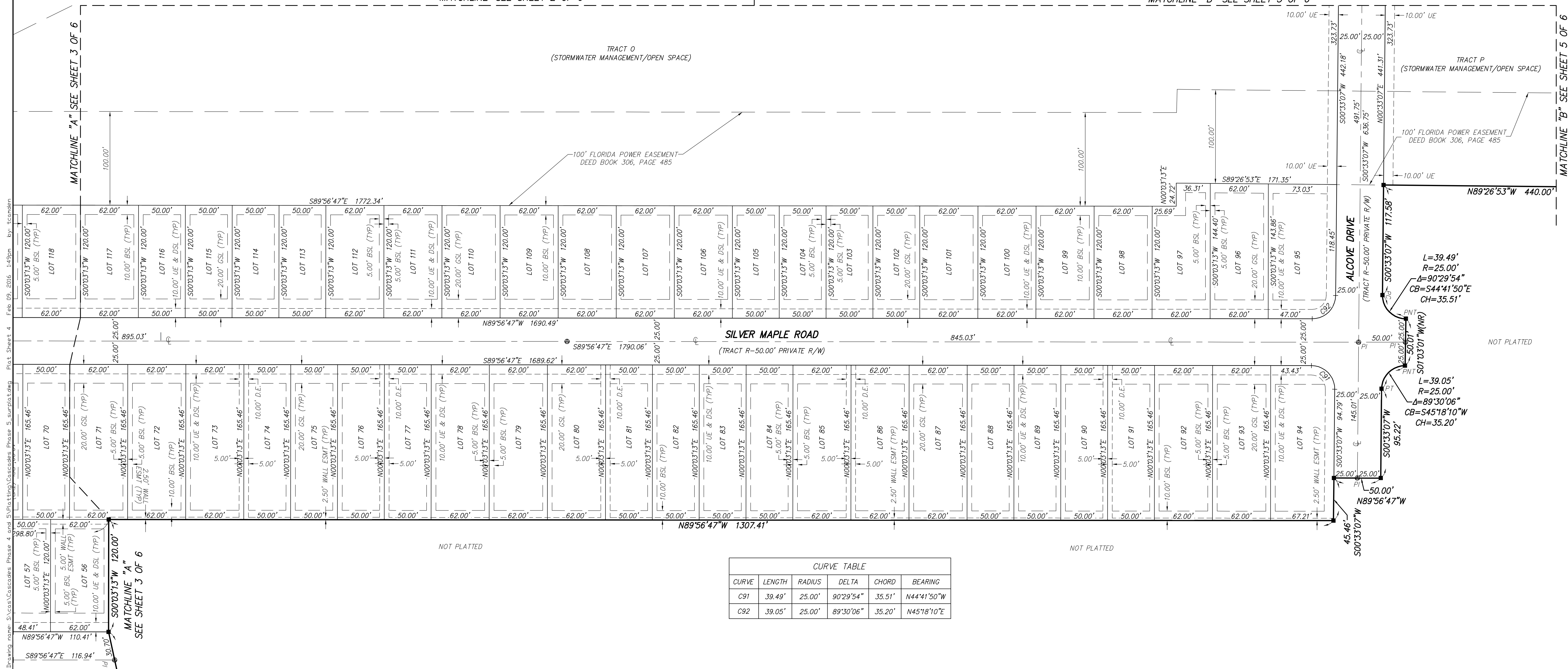
A PORTION OF THE EAST 1/2 OF SECTION 34, TOWNSHIP 21 SOUTH, RANGE 25 EAST AND A PORTION OF THE WEST 1/2 OF SECTION 35, TOWNSHIP 21 SOUTH, RANGE 25 EAST, CITY OF GROVELAND, LAKE COUNTY, FLORIDA

PLAT BOOK: PAGE:



MATCHLINE—SEE SHEET 2 OF 6

MATCHLINE "B" SEE SHEET 5 OF 6



CURVE TABLE					
CURVE	LENGTH	RADIUS	DELTA	CHORD	BEARING
C91	39.49'	25.00'	90°29'54"	35.51'	N44°41'50"W
C92	39.05'	25.00'	89°30'06"	35.20'	N45°18'10"E

Drawing name: S:\cadd\Cascades Phase 5.splotted.dwg Plot Sheet 4 Feb 09, 2016 1:49pm by: tconlon

520 SOUTH MAGNOLIA AVENUE
ORLANDO, FLORIDA 32801
PHONE: 407.843.5120 FAX: 407.648.9104
WWW.DEWBERRY.COM
CERTIFICATE OF AUTHORIZATION NO. LB 8011

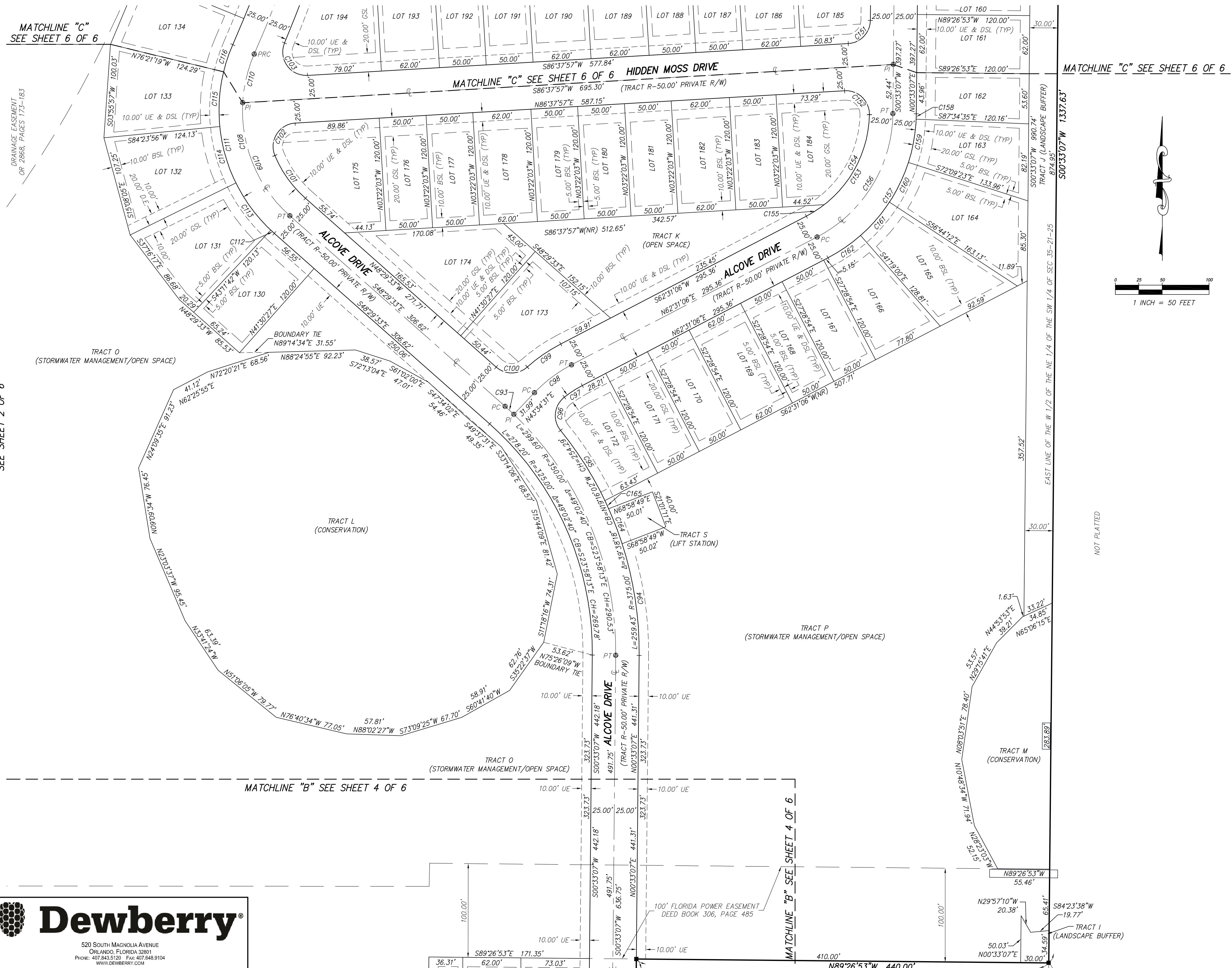
NOTICE
THIS PLAT, AS RECORDED IN ITS GRAPHIC FORM, IS THE OFFICIAL DEPICTION OF THE SUBDIVIDED LANDS DESCRIBED HEREIN AND WILL IN NO CIRCUMSTANCES BE SUPPLANTED IN AUTHORITY BY ANY OTHER GRAPHIC OR DIGITAL FORM OF THE PLAT.
THERE MAY BE ADDITIONAL RESTRICTIONS THAT ARE NOT RECORDED ON THIS PLAT THAT MAY BE FOUND IN THE PUBLIC RECORDS OF THIS COUNTY.

SHEET INDEX
SHEET 1 - COVER SHEET, LEGEND/ABBREVIATIONS, LEGAL DESCRIPTION, NOTES
SHEET 2 - OVERALL PLAT/KEY SHEET
SHEETS 3-6 - PLAT DETAIL SHEETS

CASCADES OF GROVELAND - PHASE 5

A PORTION OF THE EAST 1/2 OF SECTION 34, TOWNSHIP 21 SOUTH, RANGE 25 EAST AND A PORTION OF THE WEST 1/2 OF SECTION 35, TOWNSHIP 21 SOUTH, RANGE 25 EAST,
CITY OF GROVELAND, LAKE COUNTY, FLORIDA

PLAT BOOK: PAGE:



CURVE TABLE					
CURVE	LENGTH	RADIUS	DELTA	CHORD	BEARING
C93	12.63'	350.00'	2'04"04"	12.63'	N47°27'31"W
C94	121.09'	375.00'	18'30"05"	120.57'	N08°41'56"W
C95	88.83'	375.00'	13'34'18"	88.62'	N32°18'02"W
C96	39.76'	25.00'	91'08"04"	35.70'	S06°28'51"W
C97	22.84'	125.00'	10'28'13"	22.81'	S57°16'59"W
C98	49.59'	150.00'	18'56'35"	49.37'	S53°02'48"W
C99	43.41'	175.00'	14'12'49"	43.30'	S55°24'42"W
C100	36.30'	25.00'	83'12'10"	33.20'	N89°54'22"E
C101	56.53'	125.00'	25'54'39"	56.05'	S35°32'14"E
C102	47.65'	25.00'	109'12'51"	40.76'	S32°01'31"W
C103	50.65'	25.00'	116'04'17"	42.42'	S35°19'55"E
C108	188.90'	150.00'	72°09'10"	176.66'	S12°24'58"E
C109	135.26'	150.00'	51°40'02"	130.73'	S22°39'33"E
C110	53.63'	150.00'	20'29'08"	53.35'	S13°25'02"W
C111	220.38'	175.00'	72°09'10"	206.10'	S12°24'58"E
C112	5.15'	175.00'	1'41'15"	5.15'	S47°38'56"E
C113	62.93'	175.00'	20'36'07"	62.59'	S36°30'15"E
C114	62.93'	175.00'	20'36'07"	62.59'	S15°54'07"E
C115	58.78'	175.00'	19'14'45"	58.51'	S04°01'19"W
C116	30.59'	175.00'	10'00'55"	30.55'	S18°39'09"W
C151	37.56'	25.00'	86'04'50"	34.13'	N43°35'32"E
C152	41.26'	25.00'	94°33'04"	36.73'	N46°05'31"W
C153	133.81'	125.00'	61°20'05"	127.51'	N31°51'04"E
C154	111.01'	125.00'	50°53'00"	107.40'	N26°37'31"E
C155	22.80'	125.00'	10°27'05"	22.77'	N57°17'34"E
C156	162.23'	150.00'	61°57'59"	154.44'	N31°32'07"E
C157	189.27'	175.00'	61°57'59"	180.18'	N31°32'07"E
C158	5.72'	175.00'	1°52'18"	5.72'	N01°29'16"E
C159	47.10'	175.00'	15°25'11"	46.96'	N10°08'01"E
C160	47.10'	175.00'	15°25'11"	46.96'	N25°33'12"E
C161	47.10'	175.00'	15°25'11"	46.96'	N40°58'24"E
C162	42.26'	175.00'	13°50'07"	42.15'	N55°36'03"E
C164	40.02'	375.00'	06°06'52"	40.00'	N21°00'24"W
C165	9.50'	375.00'	01°27'03"	9.50'	N24°47'22"W

NOTICE
THIS PLAT, AS RECORDED IN ITS GRAPHIC FORM, IS THE OFFICIAL DEPICTION OF THE SUBDIVIDED LANDS DESCRIBED HEREIN AND WILL IN NO CIRCUMSTANCES BE SUPPLANTED IN AUTHORITY BY ANY OTHER GRAPHIC OR DIGITAL FORM OF THE PLAT. THERE MAY BE ADDITIONAL RESTRICTIONS THAT ARE NOT RECORDED ON THIS PLAT THAT MAY BE FOUND IN THE PUBLIC RECORDS OF THIS COUNTY.

SHEET INDEX
SHEET 1 - COVER SHEET, LEGEND/ABBREVIATIONS, LEGAL DESCRIPTION, NOTES
SHEET 2 - OVERALL PLAT/KEY SHEET
SHEETS 3-6 - PLAT DETAIL SHEETS

SEE SHEET 2 OF 6

Drawing name: S:\cads\Cascades Phase 5.splottedwg Plat Sheet 5 Feb 09, 2016 1:50pm by: tcmadden

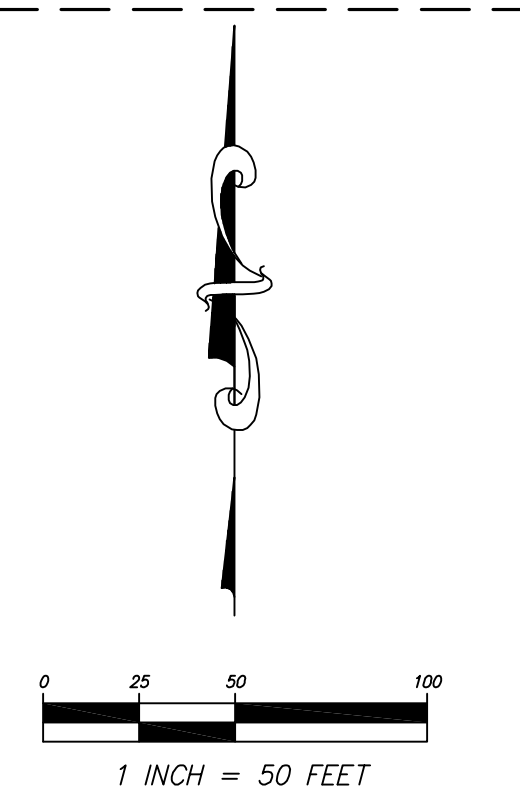


CASCADES OF GROVELAND - PHASE 5

A PORTION OF THE EAST 1/2 OF SECTION 34, TOWNSHIP 21 SOUTH, RANGE 25 EAST AND A PORTION OF THE WEST 1/2 OF SECTION 35, TOWNSHIP 21 SOUTH, RANGE 25 EAST, CITY OF GROVELAND, LAKE COUNTY, FLORIDA

PLAT BOOK: PAGE:

CURVE TABLE				
CURVE	LENGTH	RADIUS	DELTA	CHORD BEARING
C102	47.65'	25.00'	109°12'51"	40.76' S32°01'31"W
C103	50.65'	25.00'	116°04'17"	42.42' S35°19'55"E
C104	201.58'	1425.00'	8°06'19"	201.42' N18°39'05"E
C105	92.14'	1425.00'	3°42'17"	92.12' N20°51'06"E
C106	109.45'	1425.00'	4°24'02"	109.42' N16°47'56"E
C107	31.43'	25.00'	72°02'02"	29.40' S50°36'56"W
C108	188.90'	150.00'	72°09'10"	176.66' S12°24'58"E
C109	135.26'	150.00'	51°40'02"	130.73' S22°39'33"E
C110	53.63'	150.00'	20°29'08"	53.35' S13°25'02"W
C111	220.38'	175.00'	72°09'10"	206.10' S12°24'58"E
C114	62.93'	175.00'	20°36'07"	62.59' S15°54'07"E
C115	58.78'	175.00'	19°14'45"	58.51' S04°01'19"W
C116	30.59'	175.00'	10°00'55"	30.55' S18°39'09"W
C117	24.69'	1375.00'	1°01'44"	24.69' N23°08'44"E
C118	72.83'	1375.00'	3°02'05"	72.82' N21°06'50"E
C119	67.39'	1375.00'	2°48'30"	67.39' N18°11'32"E
C120	67.39'	1375.00'	2°48'30"	67.39' N15°23'02"E
C121	67.39'	1375.00'	2°48'30"	67.39' N12°34'32"E
C122	67.39'	1375.00'	2°48'30"	67.39' N09°46'03"E
C123	67.39'	1375.00'	2°48'30"	67.39' N06°57'33"E
C124	43.78'	1375.00'	1°49'28"	43.78' N04°38'34"E
C125	144.69'	100.00'	82°54'07"	132.40' S45°10'53"W
C126	18.92'	100.00'	10°50'20"	18.89' S09°09'00"W
C127	59.70'	100.00'	34°12'29"	58.82' S31°40'24"W
C128	59.70'	100.00'	34°12'29"	58.82' S65°52'53"W
C129	6.37'	100.00'	3°38'49"	6.36' S84°48'33"W
C130	108.52'	75.00'	82°54'07"	99.30' S45°10'53"W
C131	45.32'	25.00'	103°51'23"	39.36' S41°26'21"E
C132	168.09'	1425.00'	6°45'30"	167.99' N07°06'35"E
C133	91.03'	1425.00'	3°39'36"	91.01' N08°39'32"E
C134	77.06'	1425.00'	3°05'55"	77.05' N05°16'47"E
C135	72.35'	50.00'	82°54'07"	66.20' S45°10'53"W
C136	167.50'	125.00'	76°46'34"	155.25' N54°58'46"W
C137	1.30'	125.00'	0°35'38"	1.30' S86°55'46"W
C138	57.58'	125.00'	26°23'28"	57.07' N79°34'41"W
C139	55.77'	125.00'	25°33'43"	55.31' N53°36'05"W
C140	52.86'	125.00'	24°13'45"	52.47' N28°42'21"W
C141	134.00'	100.00'	76°46'34"	124.20' N54°58'46"W
C142	100.50'	75.00'	76°46'34"	93.15' N54°58'46"W
C143	67.32'	225.00'	17°08'36"	67.07' N08°01'11"W
C144	37.56'	25.00'	86°04'50"	34.13' N43°35'32"E
C145	74.80'	250.00'	17°08'36"	74.52' N08°01'11"W
C146	82.28'	275.00'	17°08'36"	81.98' N08°01'11"W
C147	28.20'	275.00'	5°52'29"	28.18' N13°39'14"W
C148	47.40'	275.00'	9°52'30"	47.34' N05°46'45"W
C149	6.69'	275.00'	1°23'37"	6.69' N00°08'42"W
C150	40.98'	25.00'	93°55'10"	36.54' N46°24'28"W
C151	37.56'	25.00'	86°04'50"	34.13' N43°35'32"E
C152	41.26'	25.00'	94°33'04"	36.73' N46°05'31"W
C153	133.81'	125.00'	61°20'05"	127.51' N31°51'04"E
C154	111.01'	125.00'	50°53'00"	107.40' N26°37'31"E
C156	162.23'	150.00'	61°57'59"	154.44' N31°32'07"E
C158	5.72'	175.00'	1°52'18"	5.72' N01°29'16"E
C159	47.10'	175.00'	15°25'11"	46.96' N10°08'01"E



Drawing name: S:\cadd\Cascades Phase 5.splottedwg Plat Sheet 6 Feb 09, 2016 2:31pm by: tconhen

SHEET INDEX	
SHEET 1	COVER SHEET, LEGEND/ABBREVIATIONS, LEGAL DESCRIPTION, NOTES
SHEET 2	OVERALL PLAT/KEY SHEET
SHEETS 3-6	PLAT DETAIL SHEETS

Dewberry
 520 SOUTH MAGNOLIA AVENUE
 ORLANDO, FLORIDA 32801
 Phone: 407.843.5120 Fax: 407.648.9104
 WWW.DEWBERRY.COM
 CERTIFICATE OF AUTHORIZATION NO. LB 8011

NOTICE
 THIS PLAT, AS RECORDED IN ITS GRAPHIC FORM, IS THE OFFICIAL DEPICTION OF THE SUBDIVIDED LANDS DESCRIBED HEREIN AND WILL IN NO CIRCUMSTANCES BE SUPPLANTED IN AUTHORITY BY ANY OTHER GRAPHIC OR DIGITAL FORM OF THE PLAT.
 THERE MAY BE ADDITIONAL RESTRICTIONS THAT ARE NOT RECORDED ON THIS PLAT THAT MAY BE FOUND IN THE PUBLIC RECORDS OF THIS COUNTY.