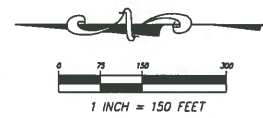
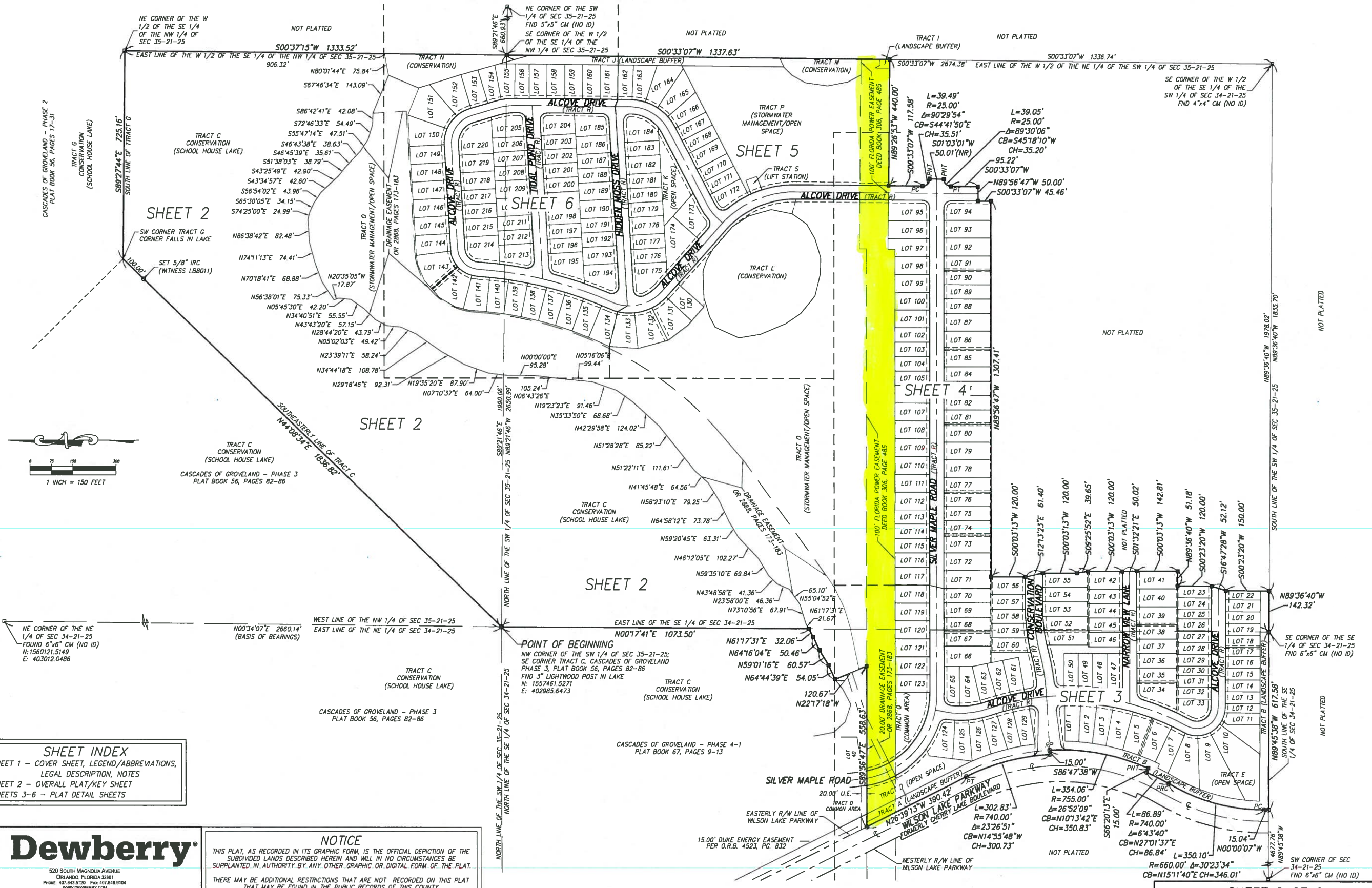


CASCADES OF GROVELAND - PHASE 5

A PORTION OF THE EAST 1/2 OF SECTION 34, TOWNSHIP 21 SOUTH, RANGE 25 EAST AND A PORTION OF THE WEST 1/2 OF SECTION 35, TOWNSHIP 21 SOUTH, RANGE 25 EAST,
CITY OF GROVELAND, LAKE COUNTY, FLORIDA

PLAT BOOK: PAGE:



SHEET INDEX

SHEET 1	COVER SHEET, LEGEND/ABBREVIATIONS, LEGAL DESCRIPTION, NOTES
SHEET 2	OVERALL PLAT/KEY SHEET
SHEETS 3-6	PLAT DETAIL SHEETS

520 SOUTH MAGNOLIA AVENUE
ORLANDO, FLORIDA 32801
PHONE: 407.843.3200 FAX: 407.848.9104
WWW.DEWBERRY.COM

CERTIFICATE OF AUTHORIZATION NO. LB 8011

NOTICE

THIS PLAT, AS RECORDED IN ITS GRAPHIC FORM, IS THE OFFICIAL DEPICTION OF THE SUBDIVIDED LANDS DESCRIBED HEREIN AND WILL IN NO CIRCUMSTANCES BE SUPPLANTED IN AUTHORITY BY ANY OTHER GRAPHIC OR DIGITAL FORM OF THE PLAT.

THERE MAY BE ADDITIONAL RESTRICTIONS THAT ARE NOT RECORDED ON THIS PLAT THAT MAY BE FOUND IN THE PUBLIC RECORDS OF THIS COUNTY.