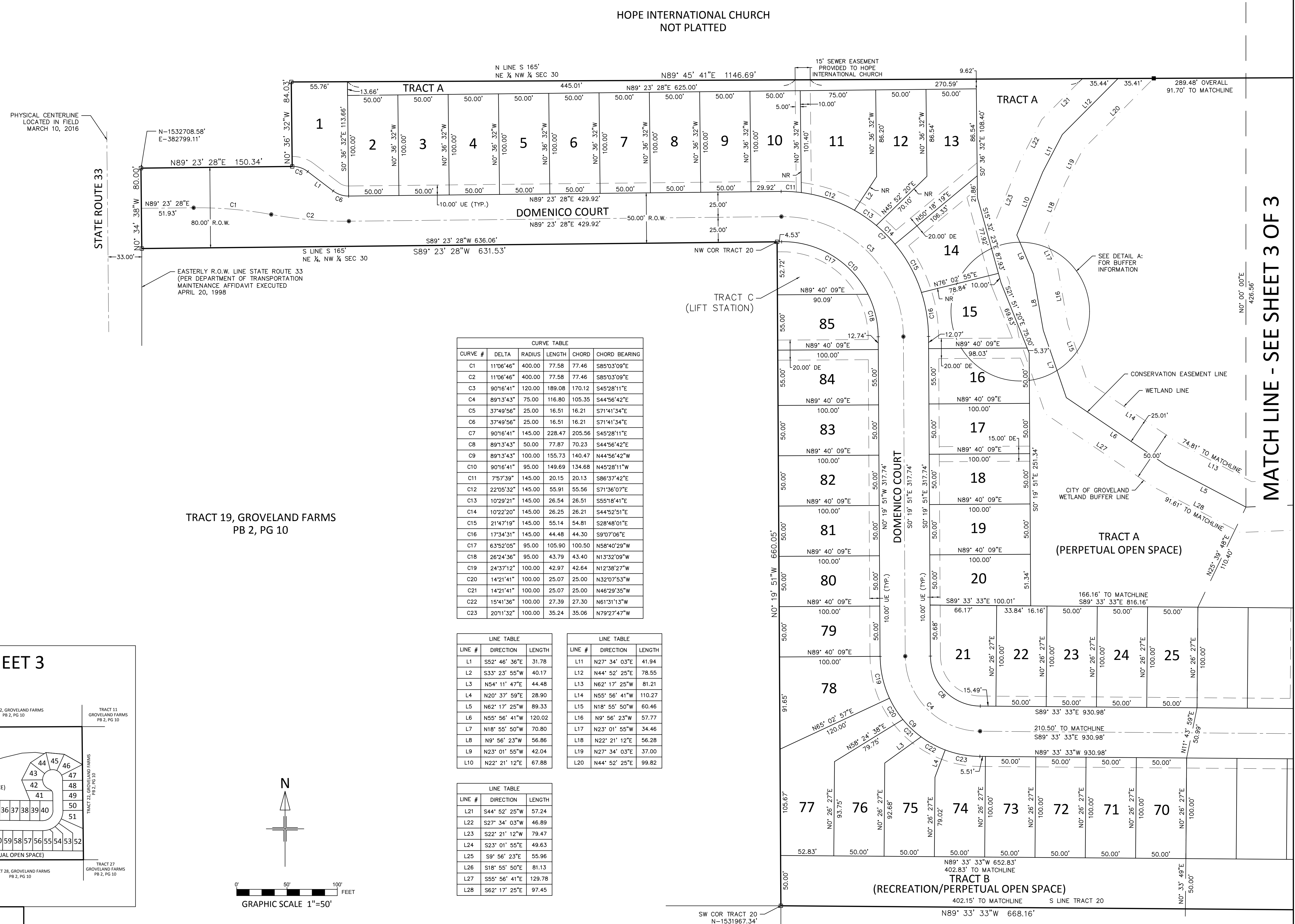
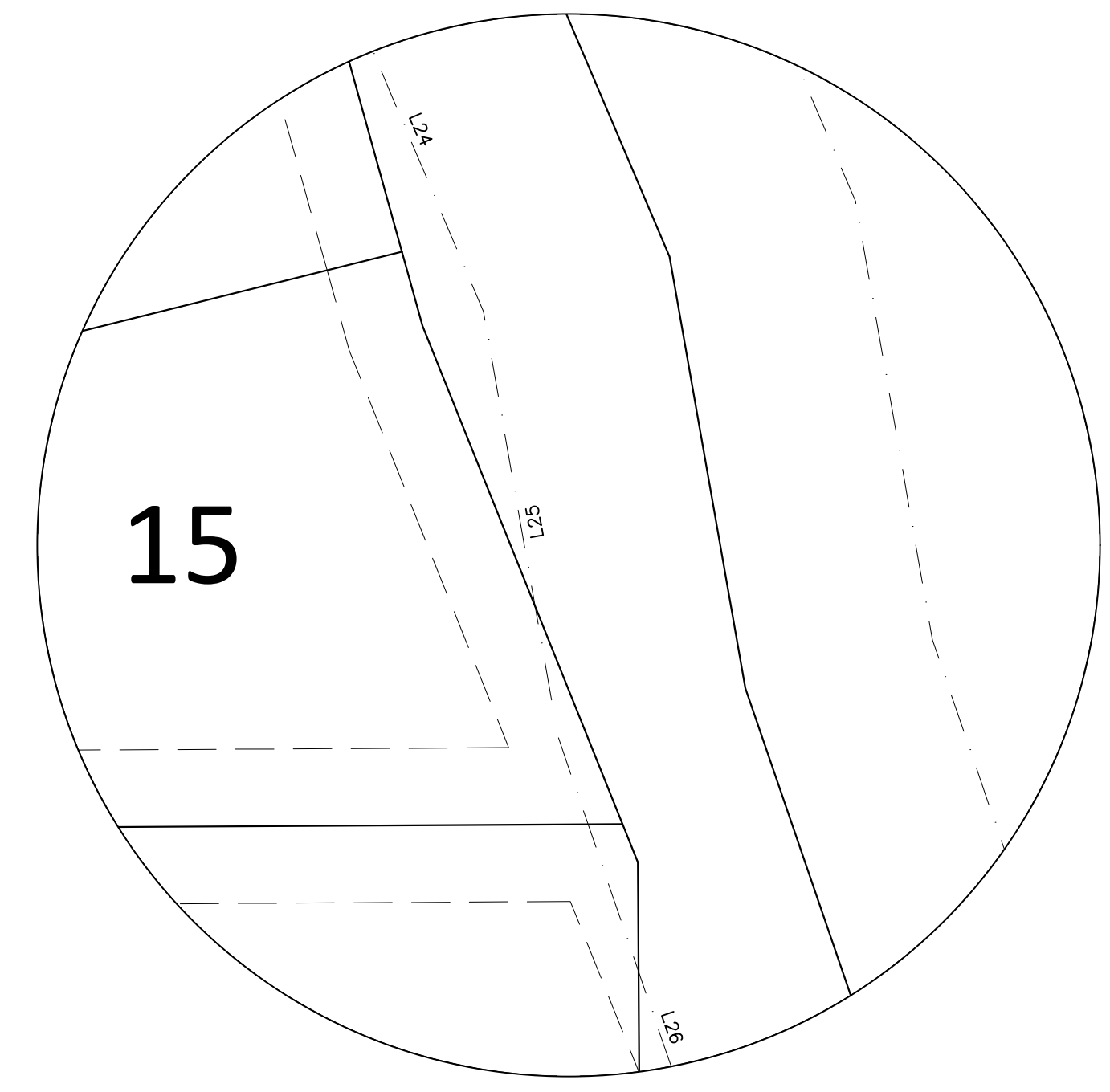


SOUTHGATE OF LAKE COUNTY

LOCATED IN SECTION 30, TOWNSHIP 22 SOUTH, RANGE 25 EAST
CITY OF GROVELAND, LAKE COUNTY, FLORIDA

DETAIL A
1"=20'



LEGEND

- | | |
|--|---|
| <ul style="list-style-type: none"> A = ARC LENGTH CA = DELTA/CENTRAL ANGLE DE = DRAINAGE EASEMENT D&M.A.E. = DRAINAGE & MAINTENANCE ACCESS EASEMENT D&UE = DRAINAGE & UTILITY EASEMENT LB = LICENSED BUSINESS NR = NON RADIAL NT = NON TANGENT ORB = OFFICIAL RECORD BOOK PB = PLAT BOOK | <ul style="list-style-type: none"> POB = POINT OF BEGINNING PC = POINT OF CURVATURE PCC = POINT OF COMPOUND CURVATURE PG = PAGE PI = POINT OF INTERSECTION POC = POINT ON CURVE PRC = POINT OF REVERSE CURVATURE PT = POINT OF TANGENCY R = RADIUS R.O.W. = RIGHT OF WAY UE = UTILITY EASEMENT |
|--|---|

NOTICE: THIS PLAT, AS RECORDED IN ITS GRAPHIC FORM, IS THE OFFICIAL DEPICTION OF THE SUBDIVIDED LANDS DESCRIBED HEREIN AND WILL IN NO CIRCUMSTANCES BE SUPPLANTED IN AUTHORITY BY ANY OTHER GRAPHIC OR DIGITAL FORM OF THE PLAT. THERE MAY BE ADDITIONAL RESTRICTIONS THAT ARE NOT RECORDED ON THIS PLAT THAT MAY BE FOUND IN THE PUBLIC RECORDS OF THIS COUNTY.

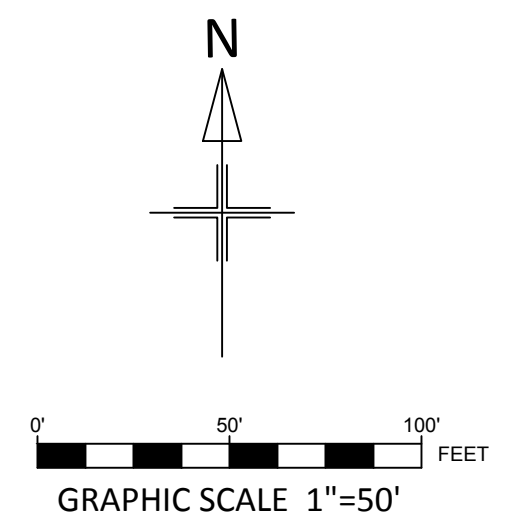
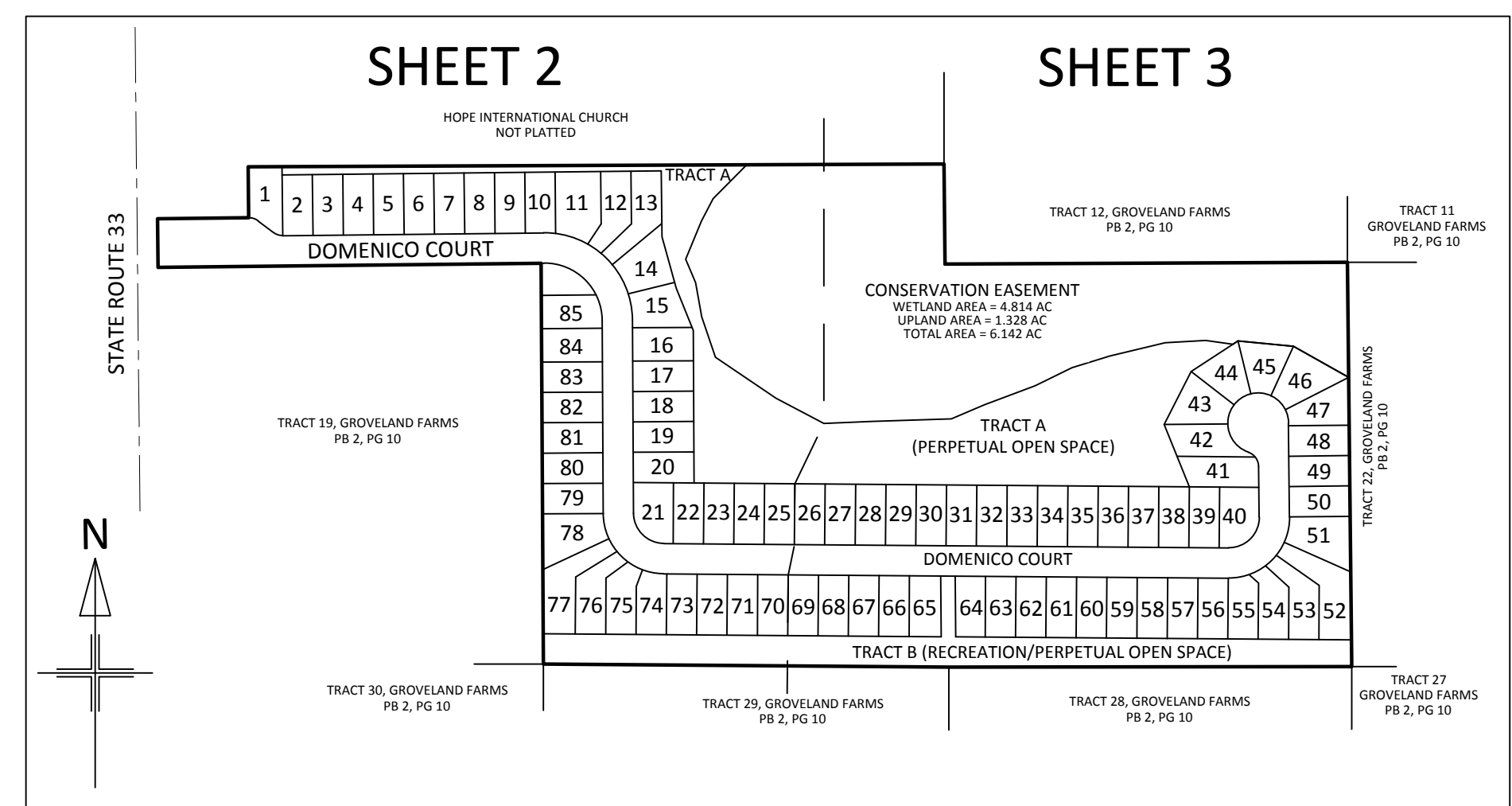
- DENOTES SET PERMANENT CONTROL POINT (PCP), A NAIL AND DISC "PCP LB # 8127"
- DENOTES SET PERMANENT REFERENCE MONUMENT (PRM), A 4"x4" CONCRETE MONUMENT "PRM LB # 8127", UNLESS NOTED OTHERWISE

TRACT 19, GROVELAND FARMS
PB 2, PG 10

CURVE TABLE					
CURVE #	DELTA	RADIUS	LENGTH	CHORD	CHORD BEARING
C1	11'06"46"	400.00	77.58	77.46	S85°03'09"E
C2	11'06"46"	400.00	77.58	77.46	S85°03'09"E
C3	90°16'41"	120.00	189.08	170.12	S45°28'11"E
C4	89°13'43"	75.00	116.80	105.35	S44°56'42"E
C5	37°49'56"	25.00	16.51	16.21	S71°41'34"E
C6	37°49'56"	25.00	16.51	16.21	S71°41'34"E
C7	90°16'41"	145.00	228.47	205.56	S45°28'11"E
C8	89°13'43"	50.00	77.87	70.23	S44°56'42"E
C9	89°13'43"	100.00	155.73	140.47	N44°56'42"W
C10	90°16'41"	95.00	149.69	134.68	N45°28'11"W
C11	7°57'39"	145.00	20.15	20.13	S86°37'42"E
C12	22°05'32"	145.00	55.91	55.56	S71°36'07"E
C13	10°29'21"	145.00	26.54	26.51	S55°18'41"E
C14	10°22'20"	145.00	26.25	26.21	S44°52'51"E
C15	21°47'19"	145.00	55.14	54.81	S28°48'01"E
C16	17°34'31"	145.00	44.48	44.30	S9°07'06"E
C17	63°52'05"	95.00	105.90	100.50	N58°40'29"W
C18	26°24'36"	95.00	43.79	43.40	N13°32'09"W
C19	24°37'12"	100.00	42.97	42.64	N12°38'27"W
C20	14°21'41"	100.00	25.07	25.00	N32°07'53"W
C21	14°21'41"	100.00	25.07	25.00	N46°29'35"W
C22	15°41'36"	100.00	27.39	27.30	N61°31'13"W
C23	20°11'32"	100.00	35.24	35.06	N79°27'47"W

LINE TABLE			LINE TABLE		
LINE #	DIRECTION	LENGTH	LINE #	DIRECTION	LENGTH
L1	S52° 46' 36"E	31.78	L11	N27° 34' 03"E	41.94
L2	S33° 23' 55"W	40.17	L12	N44° 52' 25"E	78.55
L3	N54° 11' 47"E	44.48	L13	N62° 17' 25"W	81.21
L4	N20° 37' 59"E	28.90	L14	N55° 56' 41"W	110.27
L5	N62° 17' 25"W	89.33	L15	N18° 55' 50"W	60.46
L6	N55° 56' 41"W	120.02	L16	N9° 56' 23"W	57.77
L7	N18° 55' 50"W	70.80	L17	N23° 01' 55"W	34.46
L8	N9° 56' 23"W	56.86	L18	N22° 21' 12"E	56.28
L9	N23° 01' 55"W	42.04	L19	N27° 34' 03"E	37.00
L10	N22° 21' 12"E	67.88	L20	N44° 52' 25"E	99.82

LINE TABLE		
LINE #	DIRECTION	LENGTH
L21	S44° 52' 25"W	57.24
L22	S27° 34' 03"W	46.89
L23	S22° 21' 12"W	79.47
L24	S23° 01' 55"E	49.63
L25	S9° 56' 23"E	55.96
L26	S18° 55' 50"E	81.13
L27	S55° 56' 41"E	129.78
L28	S62° 17' 25"E	97.45



<p>OPTIMUM LAND SERVICES, LLC PROFESSIONAL LAND SURVEYORS</p>	<p>SHEET MAP 1" = 250'</p> <p>100 YACHT CLUB PL, TEQUESTA, FL 33469 (321) 200-4904 LICENSED BUSINESS NUMBER 8127</p>
---	---

MATCH LINE - SEE SHEET 3 OF 3

SOUTHGATE OF LAKE COUNTY

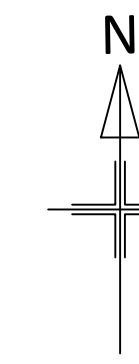
LOCATED IN SECTION 30, TOWNSHIP 22 SOUTH, RANGE 25 EAST
CITY OF GROVELAND, LAKE COUNTY, FLORIDA

LEGEND

- | | |
|---|-----------------------------------|
| A = ARC LENGTH | POB = POINT OF BEGINNING |
| CA = DELTA/CENTRAL ANGLE | PC = POINT OF CURVATURE |
| DE = DRAINAGE EASEMENT | PCC = POINT OF COMPOUND CURVATURE |
| D&M.A.E. = DRAINAGE & MAINTENANCE ACCESS EASEMENT | PG = PAGE |
| D&UE = DRAINAGE & UTILITY EASEMENT | PI = POINT OF INTERSECTION |
| LB = LICENSED BUSINESS | POC = POINT ON CURVE |
| NR = NON RADIAL | PRC = POINT OF REVERSE CURVATURE |
| NT = NON TANGENT | PT = POINT OF TANGENCY |
| ORB = OFFICIAL RECORD BOOK | R = RADIUS |
| PB = PLAT BOOK | R.O.W. = RIGHT OF WAY |
| | UE = UTILITY EASEMENT |

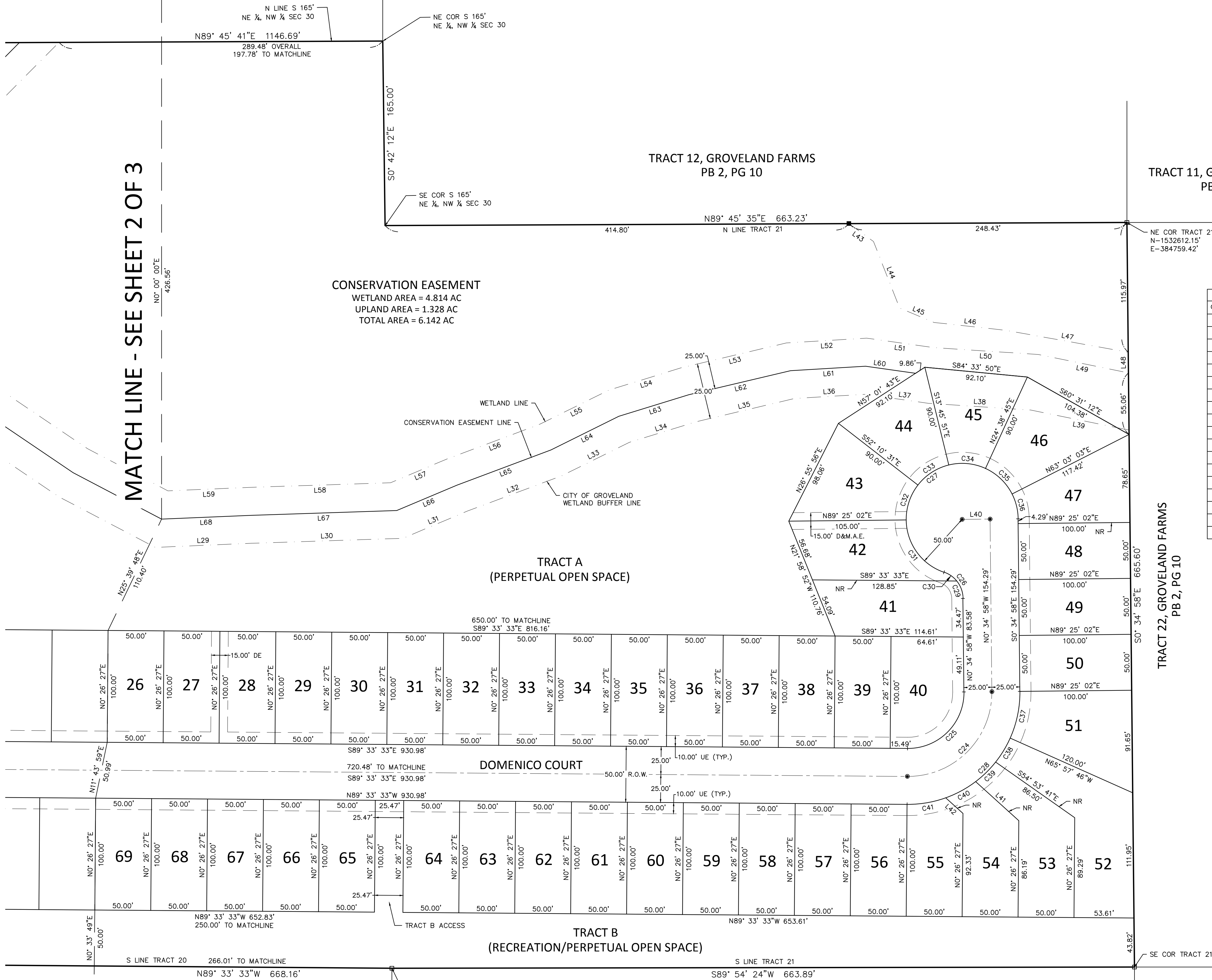
NOTICE: THIS PLAT, AS RECORDED IN ITS GRAPHIC FORM, IS THE OFFICIAL DEPICTION OF THE SUBDIVIDED LANDS DESCRIBED HEREIN AND WILL IN NO CIRCUMSTANCES BE SUPPLANTED IN AUTHORITY BY ANY OTHER GRAPHIC OR DIGITAL FORM OF THE PLAT. THERE MAY BE ADDITIONAL RESTRICTIONS THAT ARE NOT RECORDED ON THIS PLAT THAT MAY BE FOUND IN THE PUBLIC RECORDS OF THIS COUNTY.

- DENOTES SET PERMANENT CONTROL POINT (PCP), A NAIL AND DISC "PCP LB # 8127"
- DENOTES SET PERMANENT REFERENCE MONUMENT (PRM), A 4"X4" CONCRETE MONUMENT "PRM LB # 8127", UNLESS NOTED OTHERWISE



CURVE TABLE					LINE TABLE		LINE TABLE	
CURVE #	DELTA	RADIUS	LENGTH	CHORD	CHORD BEARING	LINE #	DIRECTION	LENGTH
C24	91°01'25"	75.00	119.15	107.01	N44°55'44"E	L29	N87° 33' 06"E	86.01
C25	91°01'25"	50.00	79.43	71.34	N44°55'44"E	L30	N88° 07' 46"E	135.44
C26	70°31'44"	25.00	30.77	28.87	N35°50'50"W	L31	N67° 07' 38"E	62.60
C27	250°31'44"	50.00	218.63	81.65	N54°09'10"E	L32	N69° 28' 41"E	90.52
C28	91°01'25"	100.00	158.87	142.68	S44°55'44"W	L33	N63° 39' 56"E	66.99
C29	38°43'37"	25.00	16.90	16.58	N19°56'47"W	L34	N72° 51' 20"E	62.52
C30	31°48'06"	25.00	13.88	13.70	N55°12'39"W	L35	N76° 42' 13"E	90.48
C31	70°31'44"	50.00	61.55	57.74	N35°50'50"W	L36	N86° 36' 36"E	62.56
C32	38°24'27"	50.00	33.52	32.89	N18°37'16"E	L37	S82° 01' 01"E	57.63
C33	38°24'27"	50.00	33.52	32.89	N57°01'43"E	L38	S86° 13' 01"E	91.80
C34	38°24'27"	50.00	33.52	32.89	S84°33'50"E	L39	S78° 28' 06"E	89.67
C35	38°24'27"	50.00	33.52	32.89	S46°09'23"E	L40	S89° 25' 02"W	25.00
C36	26°22'11"	50.00	23.01	22.81	S13°46'03"E	L41	S47° 49' 38"E	52.08
C37	24°37'12"	100.00	42.97	42.64	S11°43'38"W	L42	S47° 49' 38"E	20.75
C38	14°21'41"	100.00	25.07	25.00	S31°13'05"W	L43	S53° 58' 30"E	27.09
C39	14°21'41"	100.00	25.07	25.00	S45°34'46"W	L44	S21° 22' 46"E	63.91
C40	17°29'41"	100.00	30.53	30.42	S61°30'27"W	L45	S67° 19' 49"E	33.40
C41	20°11'19"	100.00	35.24	35.05	S80°20'57"W	L46	S83° 45' 17"E	64.12
						L47	S79° 52' 21"E	111.58
						L48	S0° 34' 58"E	18.51

MATCH LINE - SEE SHEET 2 OF 3



CONSERVATION EASEMENT
WETLAND AREA = 4.814 AC
UPLAND AREA = 1.328 AC
TOTAL AREA = 6.142 AC

TRACT A
(PERPETUAL OPEN SPACE)

DOMENICO COURT

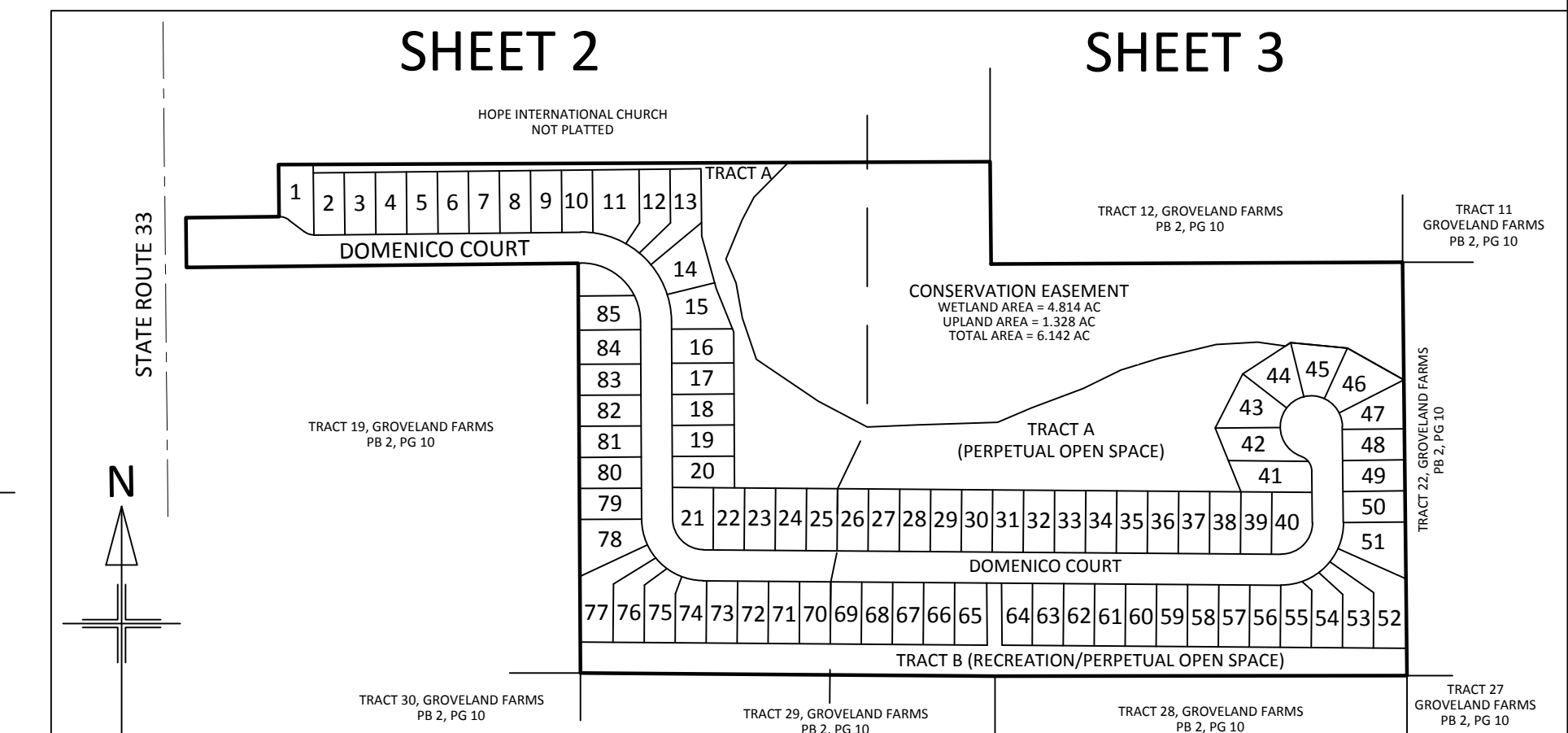
TRACT B
(RECREATION/PERPETUAL OPEN SPACE)

TRACT 28, GROVELAND FARMS
PB 2, PG 10

TRACT 11, GROVELAND FARMS
PB 2, PG 10

TRACT 22, GROVELAND FARMS
PB 2, PG 10

TRACT 27, GROVELAND FARMS
PB 2, PG 10



SHEET MAP
1" = 250'

OPTIMUM LAND SERVICES, LLC
PROFESSIONAL LAND SURVEYORS



0 50' 100'
GRAPHIC SCALE 1"=50'

100 YACHT CLUB PL,
TEQUESTA, FL 33469
(321) 200-4904
LICENSED BUSINESS NUMBER 8127