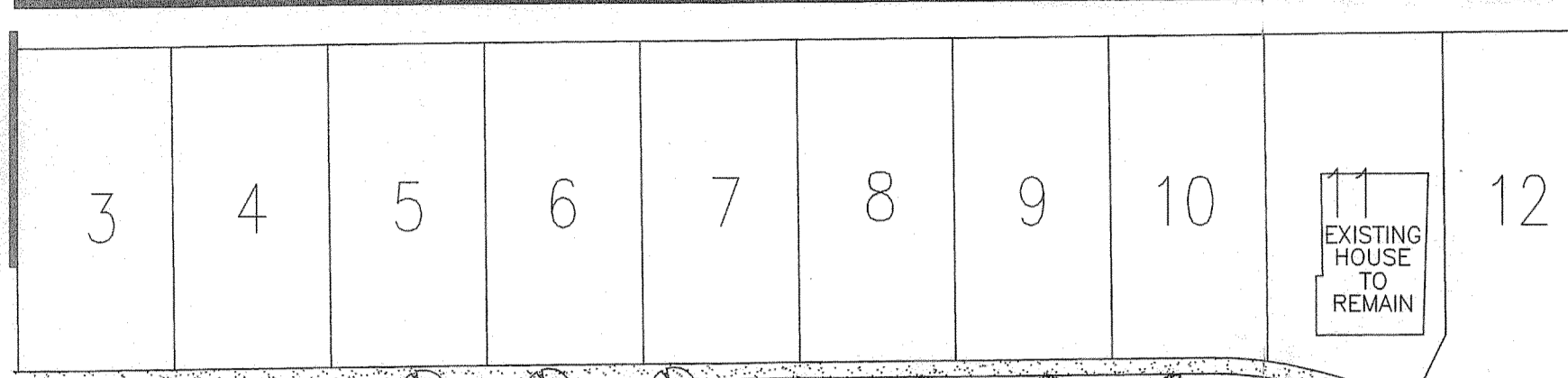
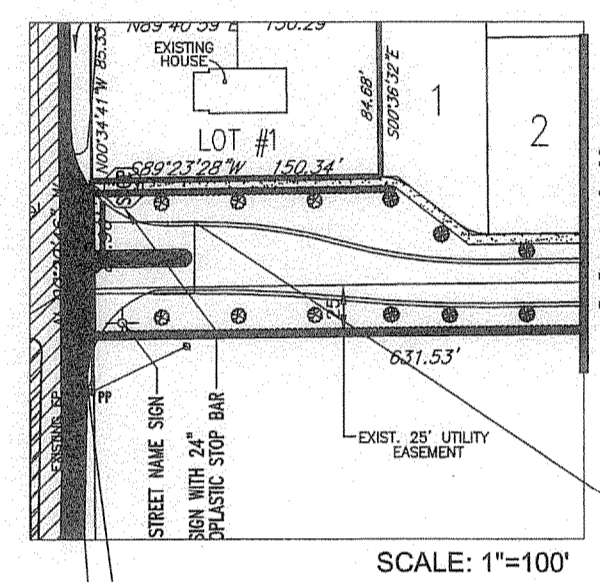


Matchline

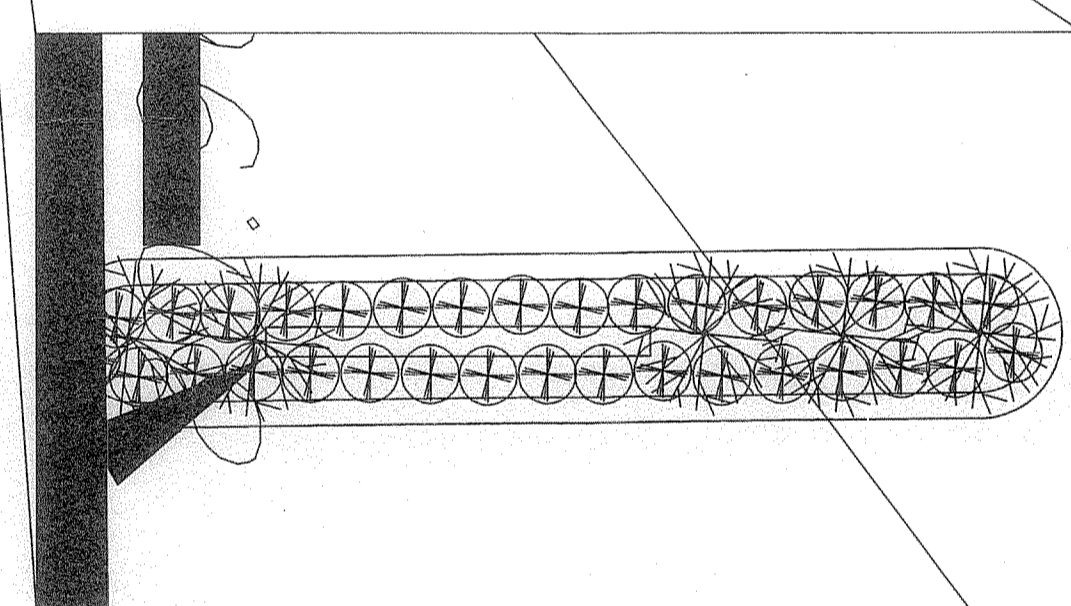
N 89°38'25" E 1296.97' 287.97'



SOUTHGATE AVENUE S 89°23'28" W

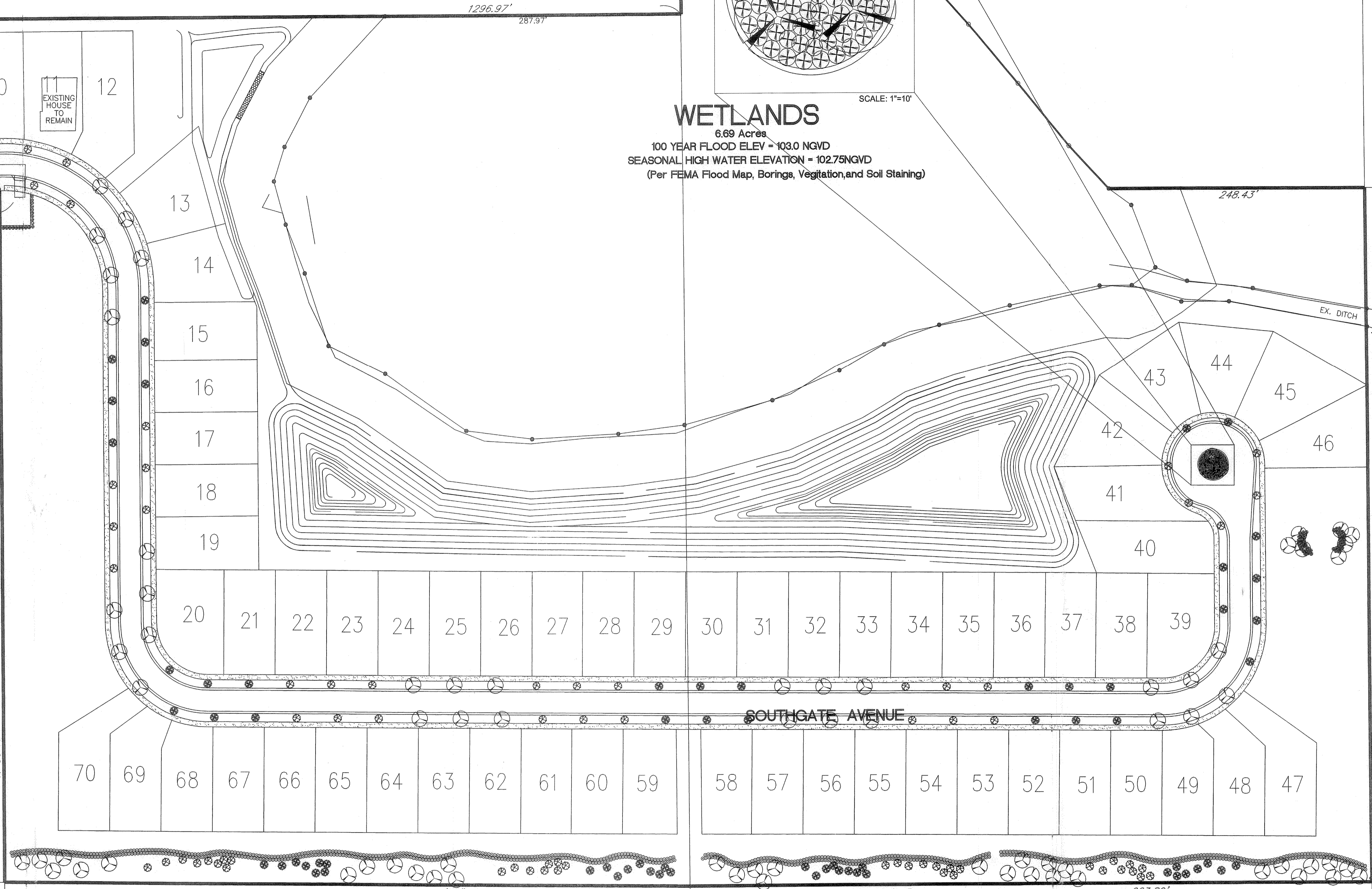


SCALE: 1"=100'

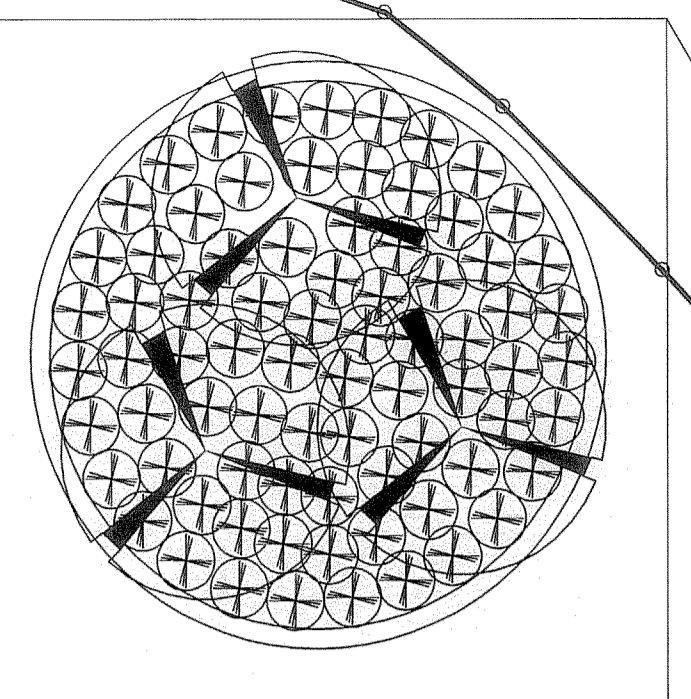


SCALE: 1"=10'

N 00°19'51" W



WETLANDS
6.69 Acres
100 YEAR FLOOD ELEV = 103.0 NGVD
SEASONAL HIGH WATER ELEVATION = 102.75 NGVD
(Per FEMA Flood Map, Borings, Vegetation, and Soil Staining)



Plant Schedule

Quan.	Common Name	Botanical Name	Size	Spacing
85	Live Oak	Quercus virginiana	2" Caliper DBH; 10' H; 4' W	As Shown
88	Crape Myrtle	Lagerstroemia indica	1.5" Caliper DBH; 8' H; 3' W	As Shown
87	Drake Elm	Ulmus parvifolia "Drake"	1.5" Caliper DBH; 8' H; 3' W	As Shown
874	Sweet Viburnum	Viburnum odoratissimum	3 Gallon; 24" Height	3 Foot On Center
446	Ligustrum	Ligustrum japonicum	3 Gallon; 24" Height	3 Foot On Center

Site Area	Residential Impervious Surface Area (sq. ft.)	Canopy Tree Requirement	Canopy Trees Provided (Street Trees)	Understory Tree Requirement	Understory Trees Provided	Shrubs Required	Shrubs Provided
	257,965.52 sq. ft./1000 = 257.96	257.96 x 0.33 = 85.12 = 85	66	257.96 x 0.5 = 128.98	177	257.96 x 5.0 = 1289.8	1320***

1290 required shrubs - 1320 provided shrubs.
Required Trees: 85 canopy + 177 understory = 262 total required.
Provided Trees: 262 trees provided.

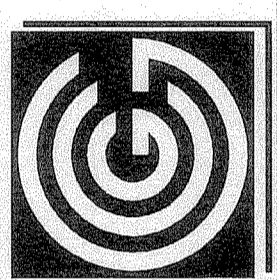
PLAY AREA SPECIFICATIONS

MANUFACTURER- CONTRACT CONNECTION; MODEL- JOURNEY, UNIT # J-00071; CAPACITY 19; ACTUAL UNIT SIZE 15'x18'; MINIMUM USE ZONE 27'x30';
LANDSCAPE NOTES

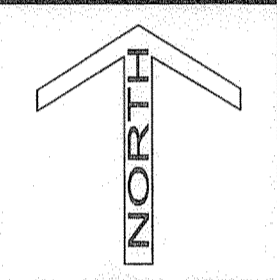
HEDGES TO FORM CONTINUOUS BUFFER WITHIN ONE YEAR. CALIPER IS MEASURED FOUR (4) FEET ABOVE THE GROUND. NO CANOPY TREE SHALL BE PLANTED WITHIN 20 FEET OF OVERHEAD UTILITIES.
ALL PLANTS ARE TO BE FLORIDA #1 OR BETTER.
AN AUTOMATIC IRRIGATION SYSTEM WILL BE PROVIDED FOR ALL LANDSCAPED AREAS.
IMPERVIUOS SURFACE: 257,965.52 sq. ft.

Landscape Plan

Southgate Subdivision
Groveland, Florida

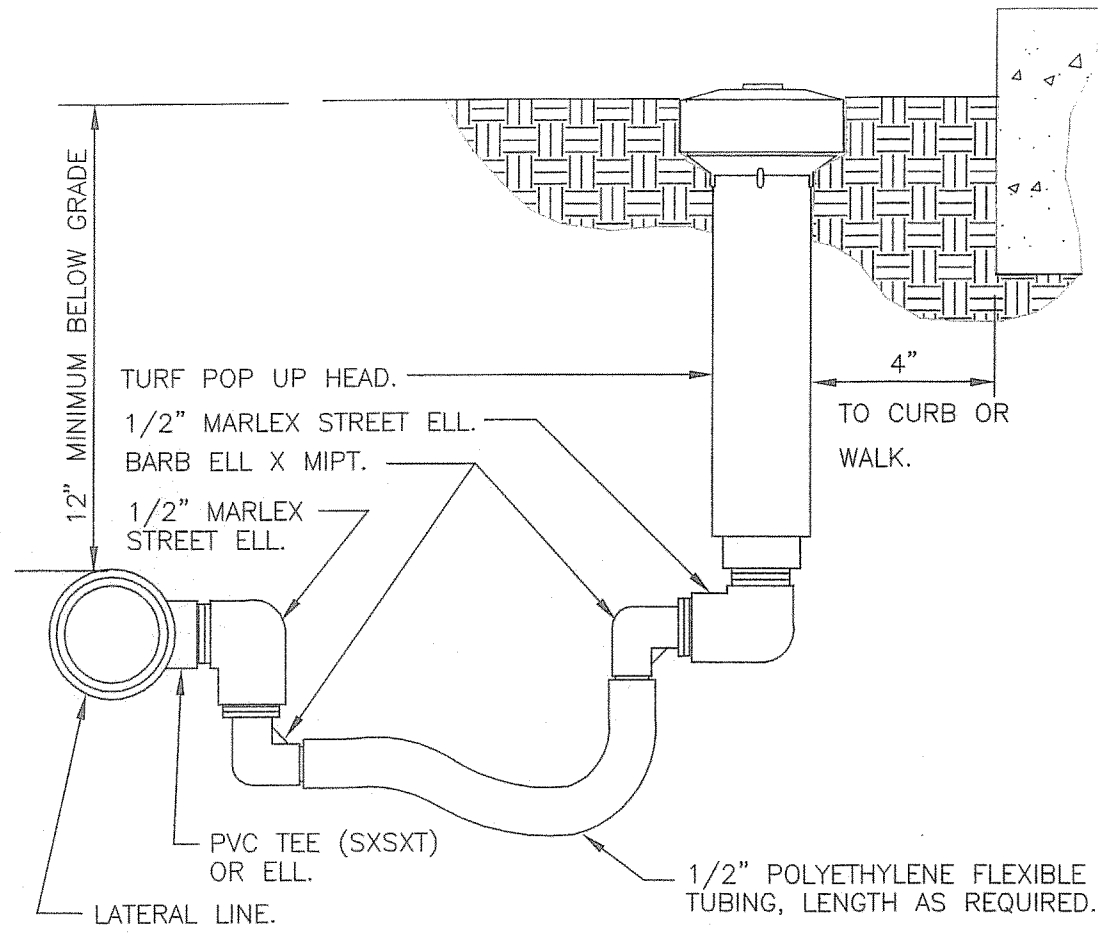


Green Consulting Group, Inc.
Landscape Architecture ■ Land Planning ■ Development Assistance
4070 United Avenue, Mount Dora, Florida 32757
352-357-9241 ■ Fax 352-357-9278 ■ LC26000288

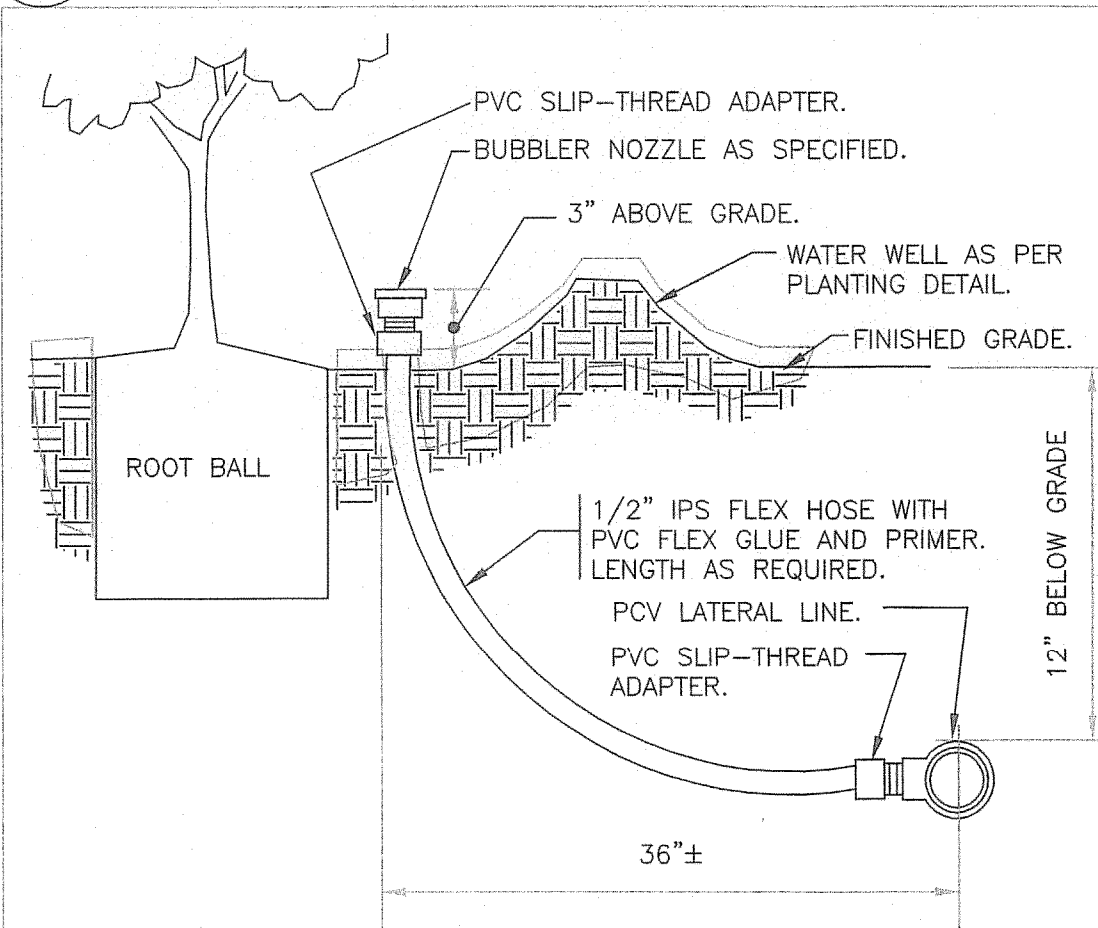


Drawing Number: 06901-06
Originated From: 06901-05
Date: September 26, 2007
Scale: 1" = 50'
Drawn By: KFB
Layout: 24"x36"

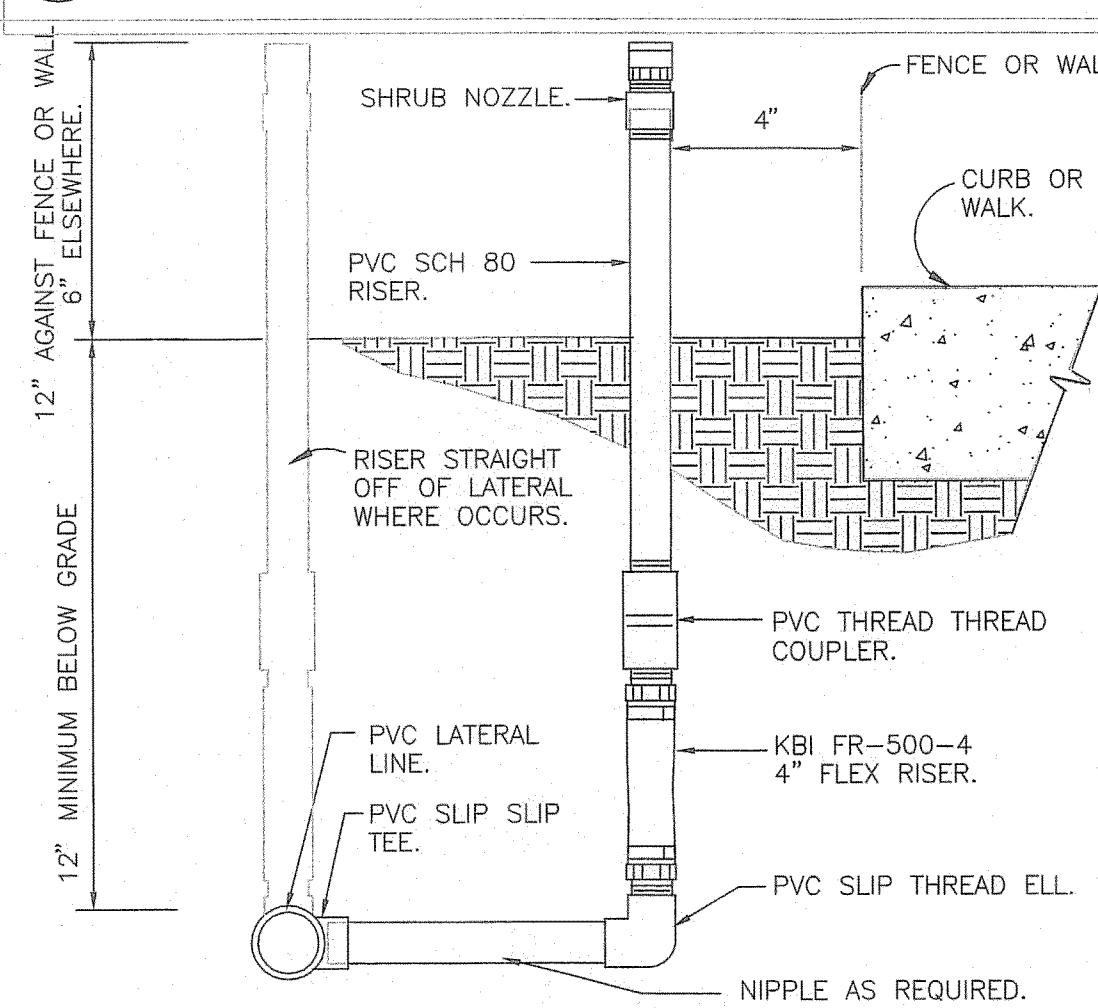
[Handwritten signature]



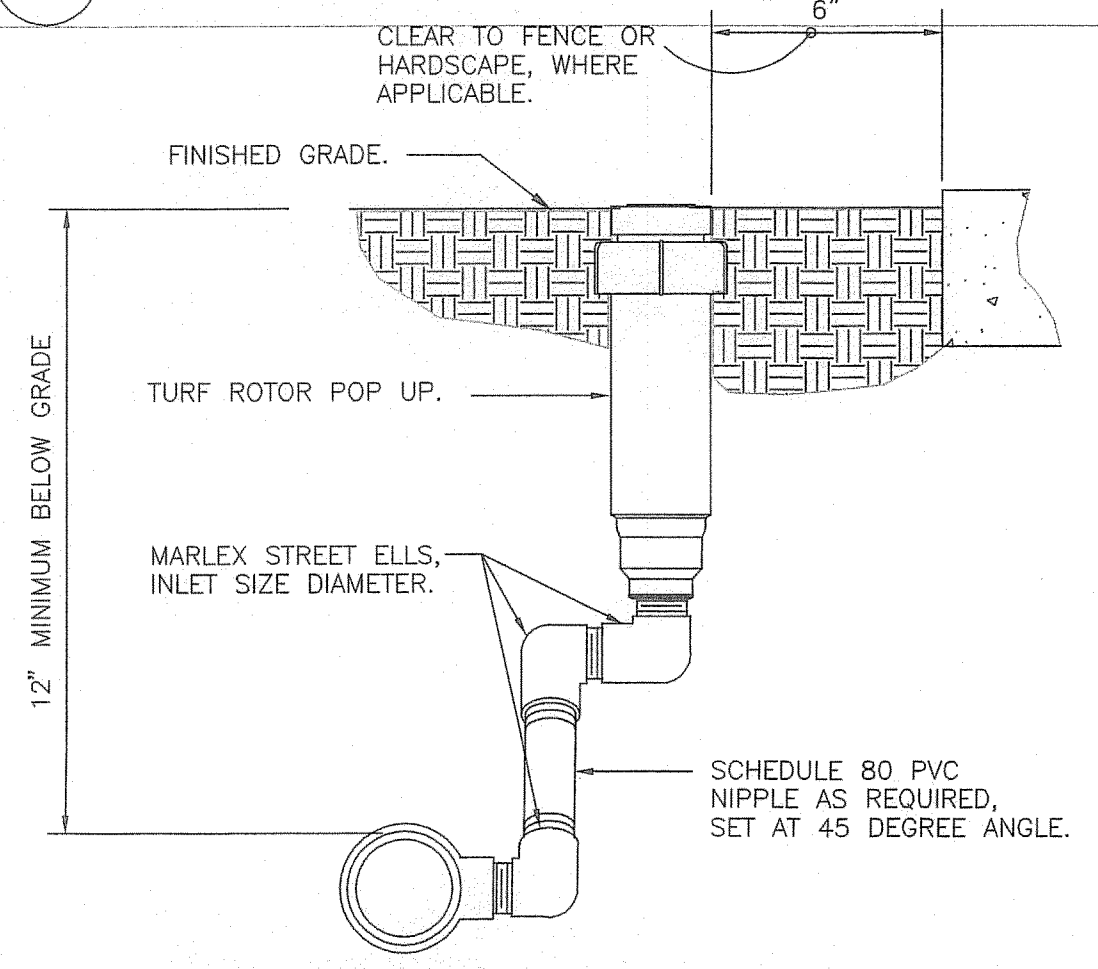
1 TURF SPRAY FLEX ASSEMBLY



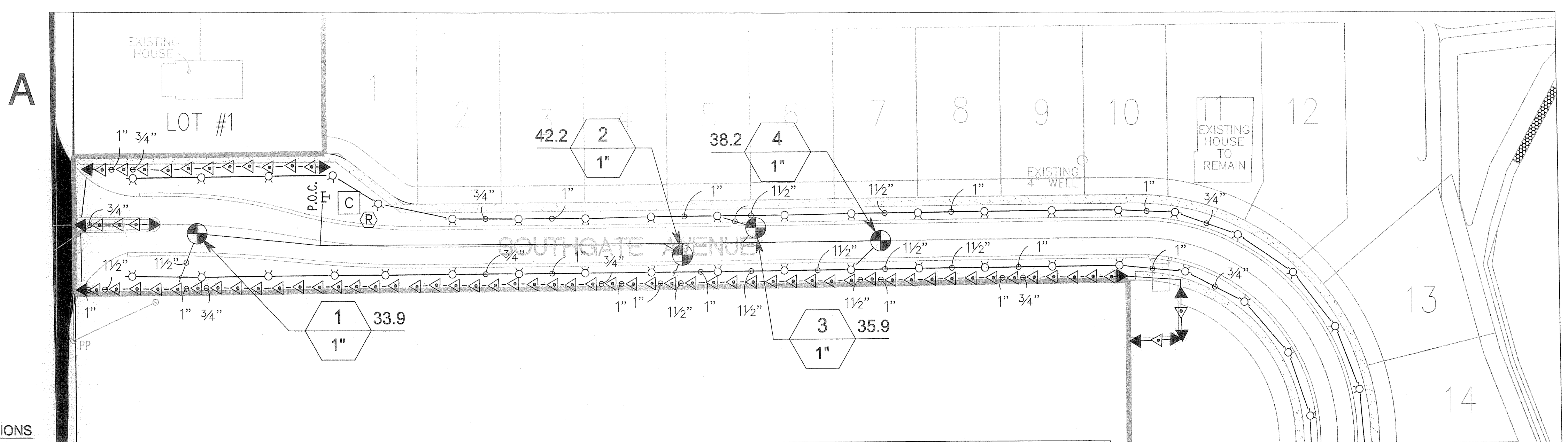
2 BUBBLER ON FLEX HOSE RISER



3 SHRUB SPRAY KBI FIXED RISER



4 TURF ROTOR MARLEX ASSEMBLY



STATIONS

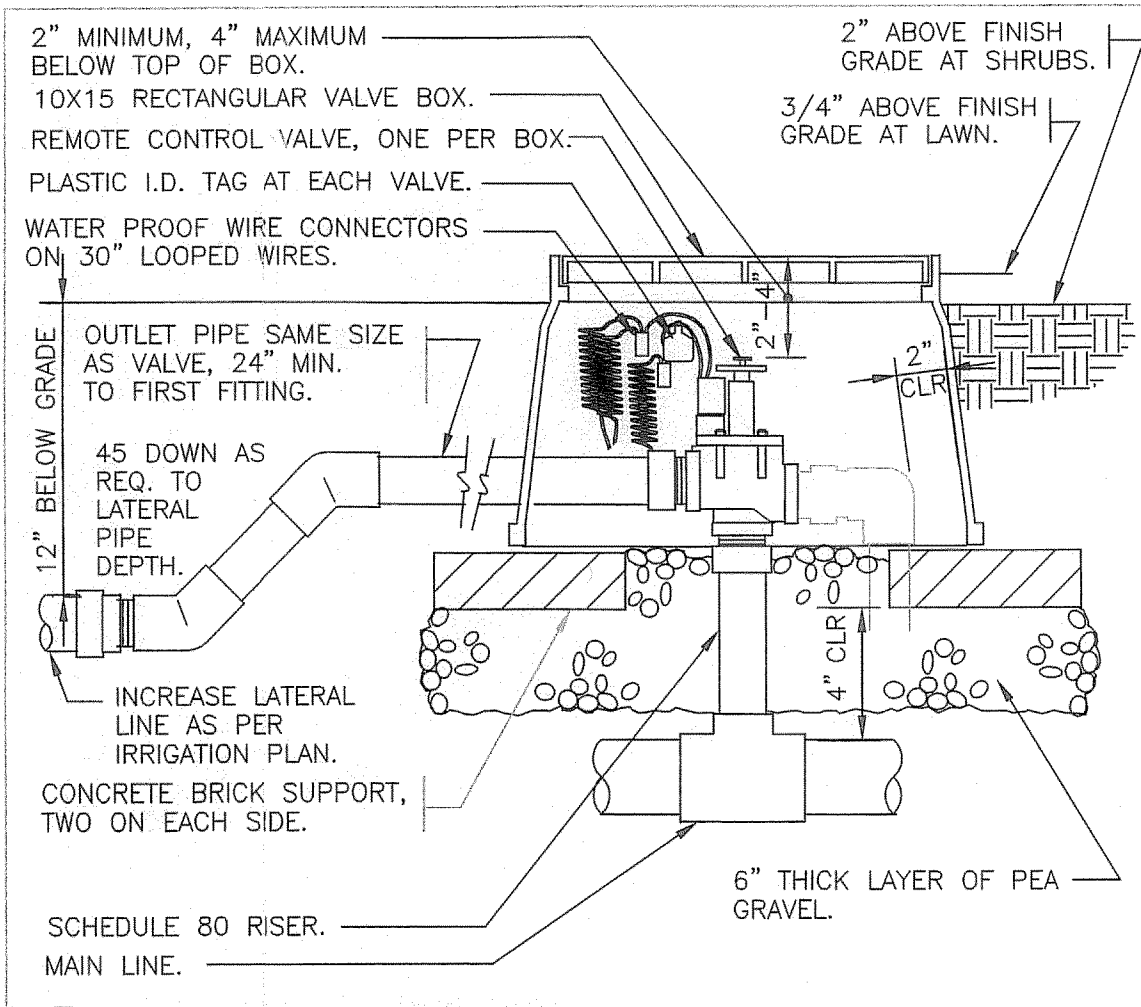
ZONE	STATION
1	33.9
2	42.2
3	35.9
4	38.2
5	36.5
6	38.2
7	28.3
8	33.4
9	34.8
10	33.4
11	33.2
12	21.6
13	32.3
	441.9

NOTES

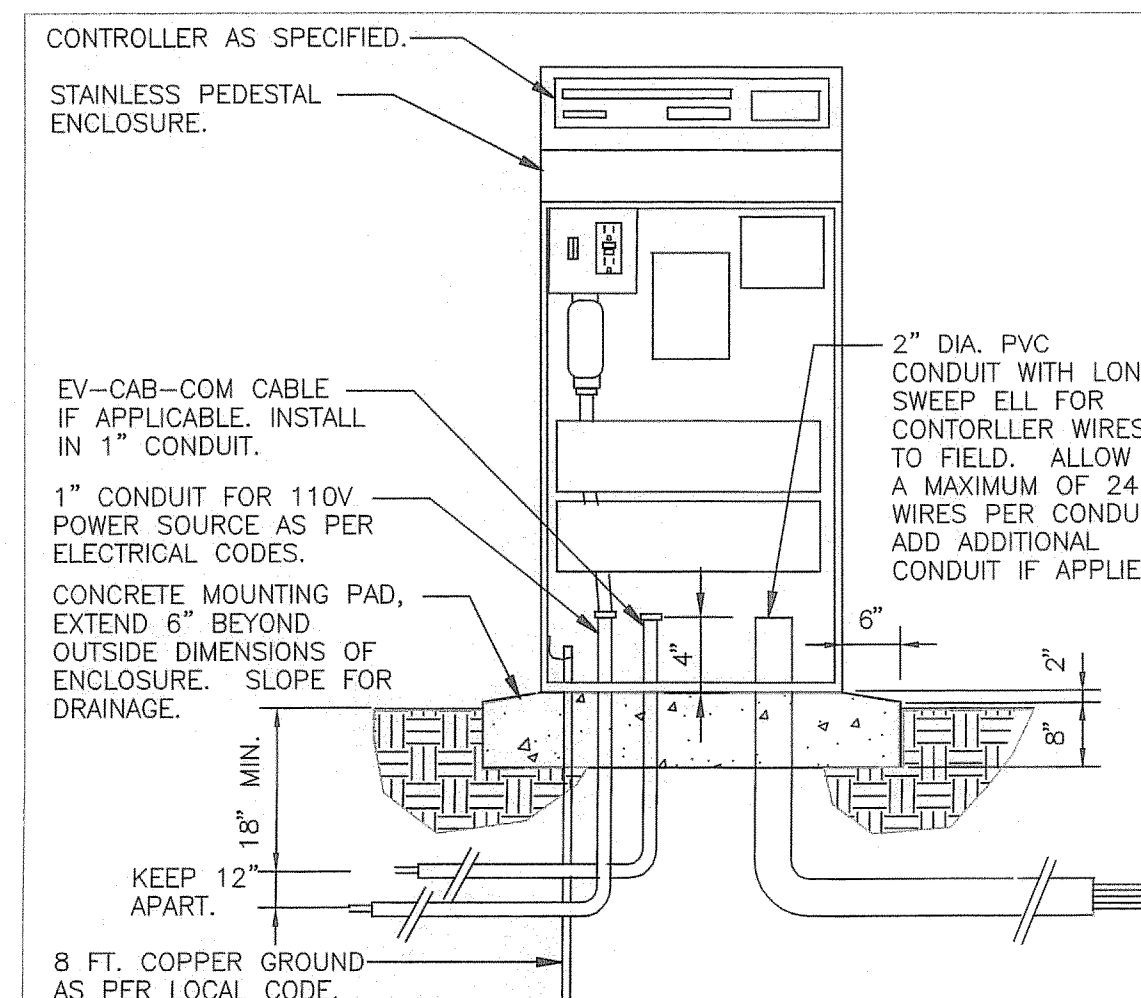
PIPE ROUTING AND VALVE LOCATIONS ARE DIAGRAMMATICAL ONLY.
 NO HEAD SHALL BE LOCATED CLOSER THAN 1' TO ANY BUILDING.
 NO IRRIGATION LINES OR VALVES SHALL BE PLACED IN THE FDOT OR CITY RIGHT OF WAY.
 IRRIGATION CONTRACTOR IS TO AVOID ANY CONFLICT WITH THE TREE AND SHRUB PLANTINGS.
 ALL PIPES AND SPRINKLER HEADS SHALL BE PURPLE IN COLOR TO DENOTE USE OF RECLAIMED WATER.
 ALL PAVEMENT CROSSINGS ARE TO BE MADE IN SLEEVES THAT ARE TWO PIPE SIZES LARGER THAN THE CROSSING.
 BACKFLOW PREVENTER IS TO BE INSTALLED AT POINT OF CONNECTION.
 WATER SERVICE IS EXISTING ON SITE. IRRIGATION CONNECTION SHALL BE MADE AT POINT AS INDICATED ON UTILITY PLANS.
 EXACT LOCATION OF UNDERGROUND UTILITIES SHOULD BE VERIFIED PRIOR TO CONSTRUCTION.
 SYSTEM DESIGNED FOR 70 PSI WITH 50 GPM AT THE POINT OF CONNECTION.
 GALLONS PER WEEK: 441.9 GPM x 20 MINS. RUN TIME x 2 DAYS PER WEEK = 17,676 GALLONS
 GALLONS PER YEAR: 17,676 GALLONS PER WEEK x 52 = 919,152 GALLONS.
 HOURS AVAILABLE FOR IRRIGATION: 12 MIDNIGHT TO 10 AM AND 4 PM TO 12 MIDNIGHT MAXIMUM OF TWICE A WEEK.

IRRIGATION SCHEDULE

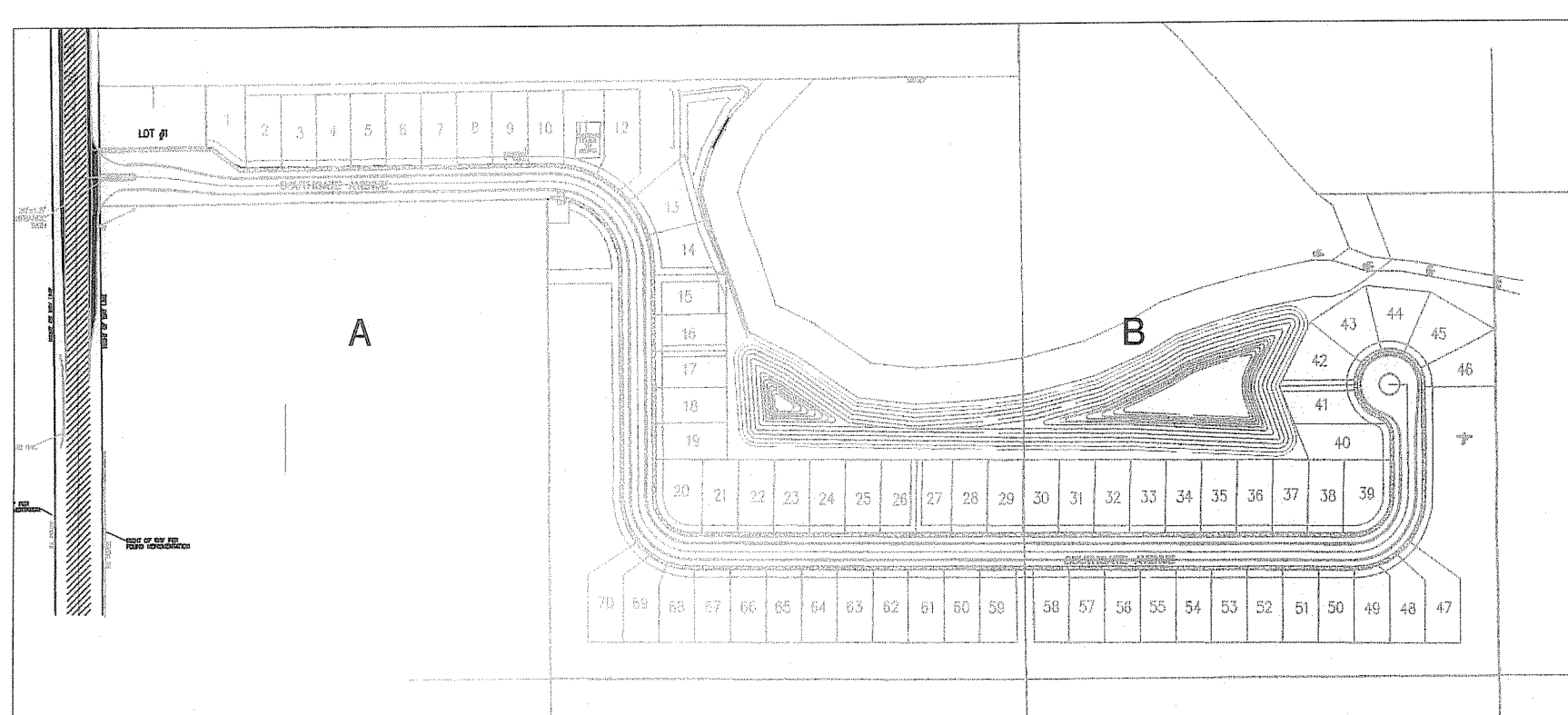
SYMBOL	MANUFACTURER/MODEL/DESCRIPTION	QTY	PSI
Q T H TT TO F	Toro 570Z-6P 15' radius Turf Spray, 6" pop-up	14	40
▲ ▲ ▲ EST CST SST	Toro 570S 4' strip spray Shrub Spray on fixed riser	78	40
⊕ ⊕ ⊕ ⊕ ⊕ ⊕ ⊕ ⊕	Toro 570S 5' radius Shrub Spray on fixed riser	13	40
⊙ ⊙ ⊙ ⊙ ⊙ ⊙ ⊙ ⊙	Toro 570S 15' radius Shrub Spray on fixed riser	1	40
⊙ ⊙ ⊙ ⊙ ⊙ ⊙ ⊙ ⊙	Toro 570Z-6P-SB Pressure Compensating Shrub Stream Spray Bubbler, 6" pop-up	137	40
SYMBOL	MANUFACTURER/MODEL/DESCRIPTION	QTY	PSI GPM RADIUS
(1.3)	Toro S600 Turf Rotor, 2" pop-up, adjustable arc and full circle nozzles	70	40 1.5 39'
SYMBOL	MANUFACTURER/MODEL/DESCRIPTION	QTY	
⊕	Toro 252-27 Electric Remote Control Valve, 1 1/2" or 2" pressure regulating	13	
C	Toro V2-M-12 Irrigation Controller, 12 stations, metal cabinet	1	
R	Toro TRS Wired Rain Sensor. Mount as noted or approved, use controller power or optional transformer. Adjust rain shutoff index.	1	
P.O.C.		2	
—	Irrigation Lateral Lin: PVC Class 200	9,413 l.f.	
—	Irrigation Mainline: PVC Schedule 40	2,235 l.f.	
#1 #2 #3	Valve Number		
#1 #2 #3	Valve GPM		
#1 #2 #3	Valve Size		



5 ELECTRIC REMOTE CONTROL VALVE

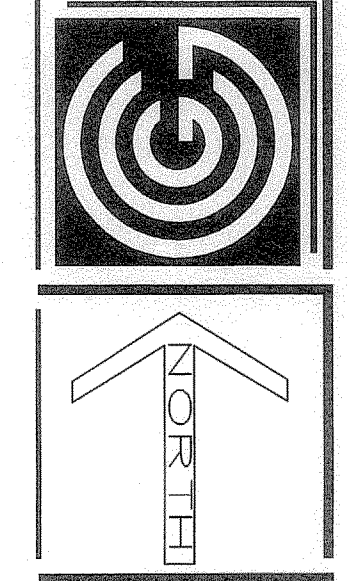


6 RAINMASTER PEDESTAL CONTROLLER



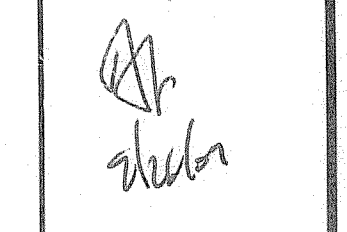
Master Drawing Scale: NTS

Green Consulting Group, Inc.
 Landscape Architecture ■ Site Planning ■ Development Assistance
 4070 United Avenue, Mount Dora, Florida 32757
 352-357-9241 • Fax 352-357-9278 • LC26000288



Drawing Number: 06801-07
 Originated From: 06801-04
 Date: September 26, 2007
 Scale: 1"=40'
 Last Edited By: KFB
 Layout: 24"x36"

Southgate Subdivision
 Groveland, Florida



Irrigation Plan

