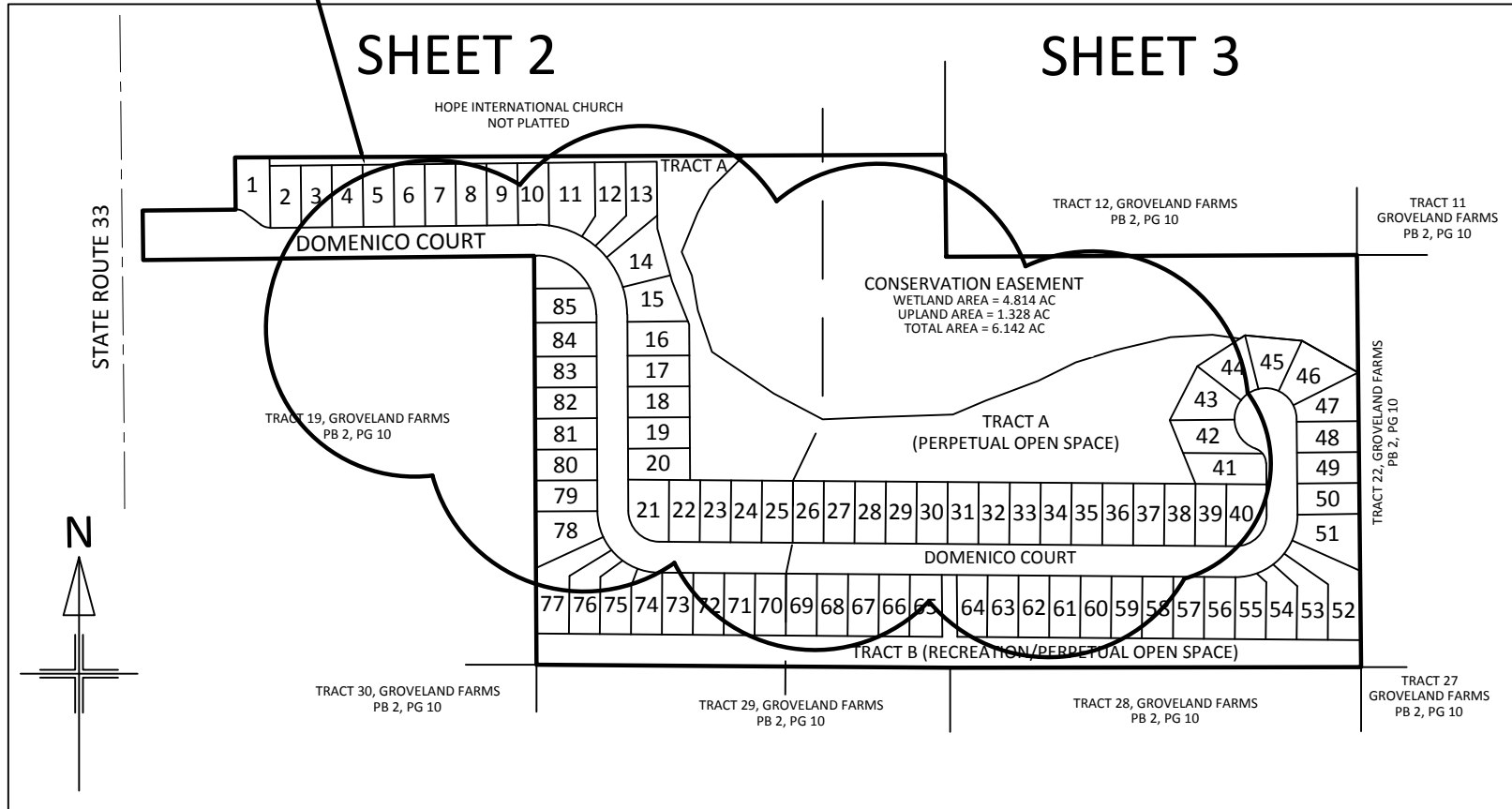


VICINITY MAP

NOT TO SCALE

ROAD NAME CHANGE
(SHEET MAP 3 PAGES)



OPTIMUM LAND SERVICES, LLC
PROFESSIONAL LAND SURVEYORS

SHEET MAP

NOT TO SCALE



100 YACHT CLUB PL,
TEQUESTA, FL 33469
(321) 200-4904
LICENSED BUSINESS NUMBER 8127

SOUTHGATE OF LAKE COUNTY DEDICATION

KNOW ALL MEN BY THESE PRESENTS, THAT THE CORPORATION NAMED BELOW, BEING THE OWNER IN FEE SIMPLE OF THE LANDS DESCRIBED IN THE FOREGOING CAPTION TO THIS PLAT, HEREBY DEDICATES SAID LANDS AND PLAT FOR THE USES AND PURPOSES THEREIN EXPRESSED, INCLUDING THE PLAT NOTES. UNLESS OTHERWISE INDICATED IN THE PLAT NOTES, ALL UTILITY EASEMENTS (U.E.) AND DRAINAGE EASEMENTS (D.E.) CREATED BY THIS PLAT ARE DEDICATED TO THE CITY OF GROVELAND FOR THEIR INTENDED PURPOSES. TRACT C (LIFT STATION) AND DOMENICO COURT IS ALSO HEREBY DEDICATED TO THE CITY OF GROVELAND. OWNERSHIP OF TRACT C (LIFT STATION) AND DOMENICO COURT AND ANY IMPROVEMENTS THEREON VEST UPON APPROVAL OF THIS PLAT BY THE CITY OF GROVELAND. THE RECORDING OF THIS PLAT IN THE PUBLIC RECORDS OF LAKE COUNTY, FLORIDA SHALL ACT AS A CONVEYANCE TO THE CITY OF GROVELAND. NO FURTHER INSTRUMENT SHALL BE NECESSARY TO VEST FEE SIMPLE TITLE IN TRACT C (LIFT STATION) AND DOMENICO COURT IN THE CITY OF GROVELAND. NO EASEMENT DEPICTED ON THE PLAT, OR DESCRIBED IN THE PLAT NOTES, IS DEDICATED TO THE PUBLIC UNLESS SPECIFICALLY STATED OTHERWISE IN THE PLAT NOTES.

IN WITNESS WHEREOF, HAS CAUSED THESE PRESENT TO BE SIGNED AND ATTESTED TO BY THE MANAGING MEMBER NAMED BELOW THIS ____ DAY OF _____, 2016.

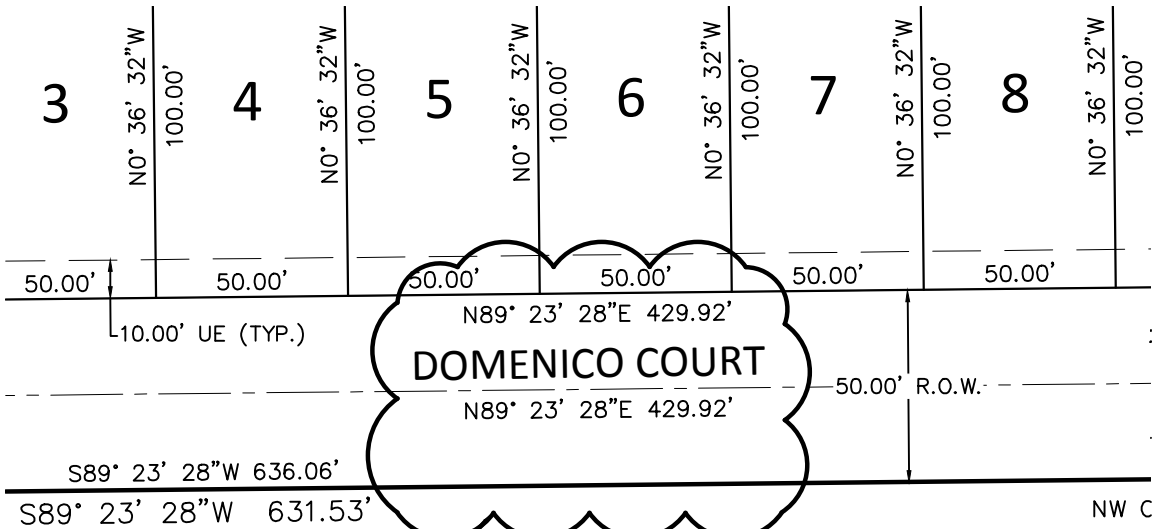
SOUTHGATE OF LAKE COUNTY, LLC, A FLORIDA LIMITED LIABILITY COMPANY
301 SAMPEY ROAD
GROVELAND, FL 34736
352-429-9507

ROAD NAME CHANGE

WITH 165' OF THE NORTHEAST ¼ OF THE
T1, RANGE 25 EAST, AS BEING N89°45'41"E.
EAST ZONE NAD 83(09).

NON-RADIAL.

MANDATORY HOMEOWNERS ASSOCIATION
ASSOCIATION, INC., A FLORIDA
LIMITED LIABILITY COMPANY ("ASSOCIATION"), REQUIRING THE PAYMENT OF FEES
AND ASSESSMENTS BY THE OWNERS OF THE LOTS DEPICTED
HEREON WILL RESULT IN THE ATTACHMENT OF A LIEN
AGAINST SUCH FEES OR ASSESSMENTS BY THE
ASSOCIATION IN THE EVENT OF NON-PAYMENT OF SAID PROPERTY.

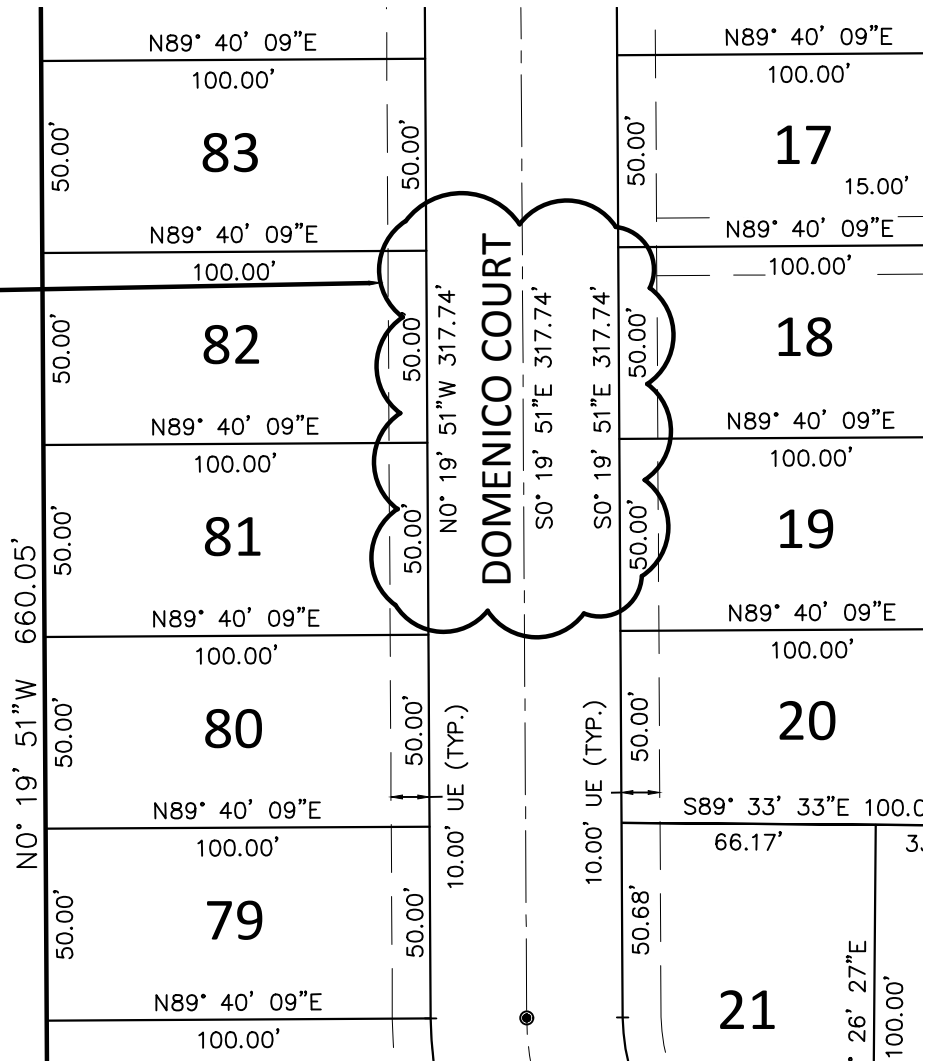


ROAD NAME CHANGE

ADD 4X4 CM TO NW CORNER OF TRACT C

(LIFT

ROAD NAME CHANGE



TRACT A (PERPETUAL OPEN SPACE)

