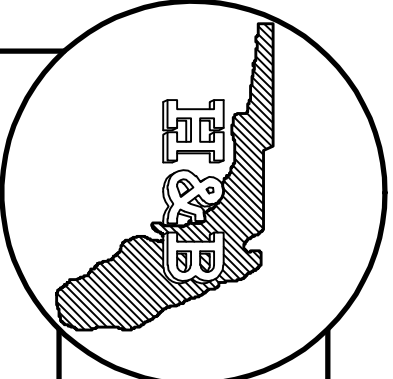
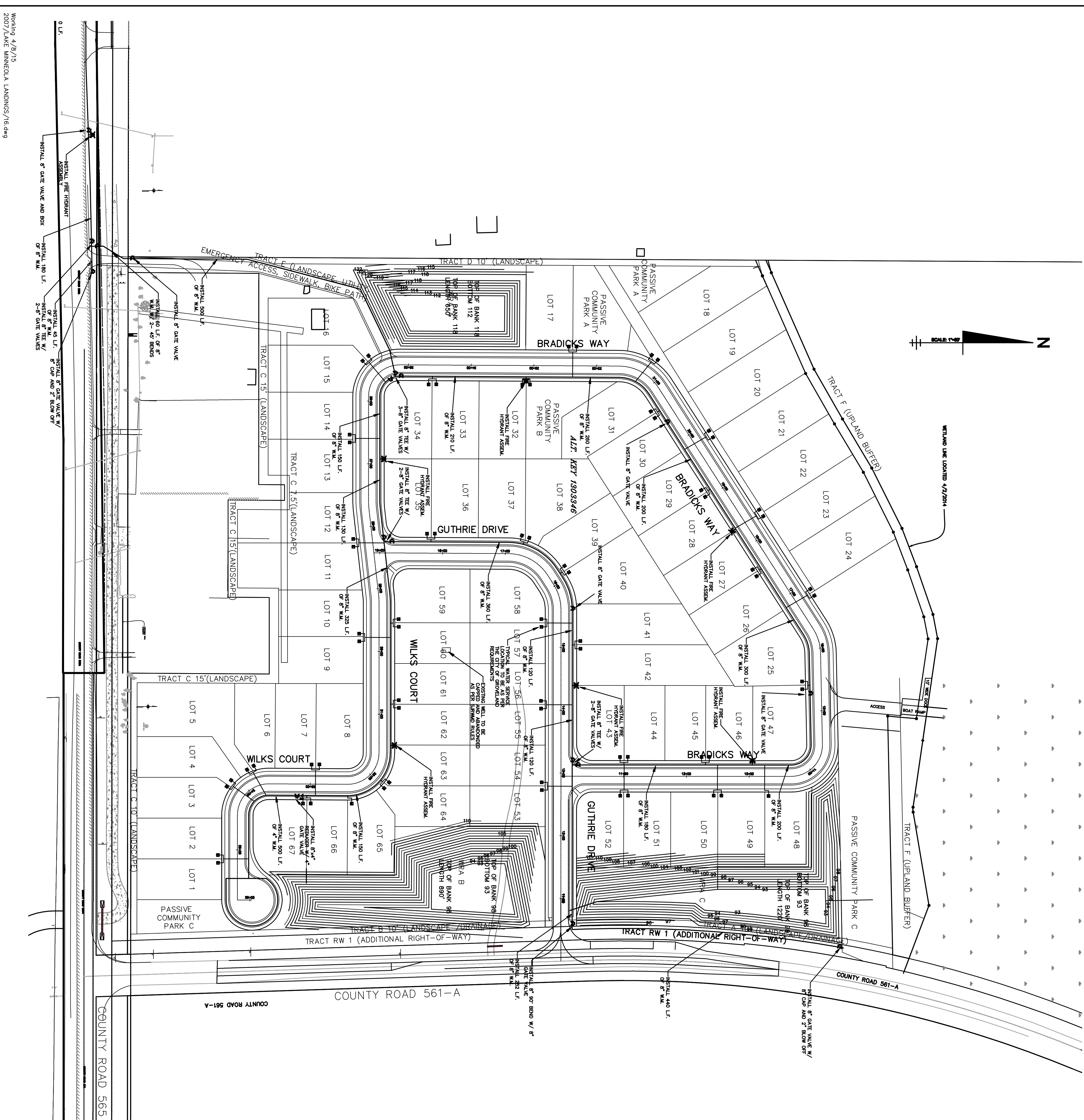




- GENERAL NOTES:**
- CHANGES IN DIRECTION OR ELEVATION OF PRESSURE PIPE SHALL BE ACCOMPISHED USING FITTINGS.
  - ALL SERVICE CONNECTIONS TO THE WATER MAINS SHALL NOT BE LOCATED UNDER PAVEMENT.



**Water Main On-Site**  
 H & B CONSULTING ENGINEERS, INC.  
 Certificate of Authorization # 4829  
 P.O. Box 520  
 218 N. Florida Street, Suite 3  
 Bushnell, Florida 33513  
 Phone : (352) 793-2113

**Lake Minneola Landings**  
 C.R. 561 A  
 Minneola, FL 34711

REVISIONS	Drawn:	Checked:	Date:	Scale:	Sheet:	Total:
7/15 Rev. City Groveland Comments	TFW	MZB	4/15	1"=80'	3	7
10/15 Rev. City Groveland Comments	MZB					

Working 4/8/15  
 2:00 / LAKE MINNEOLA LANDINGS / 16.dwg