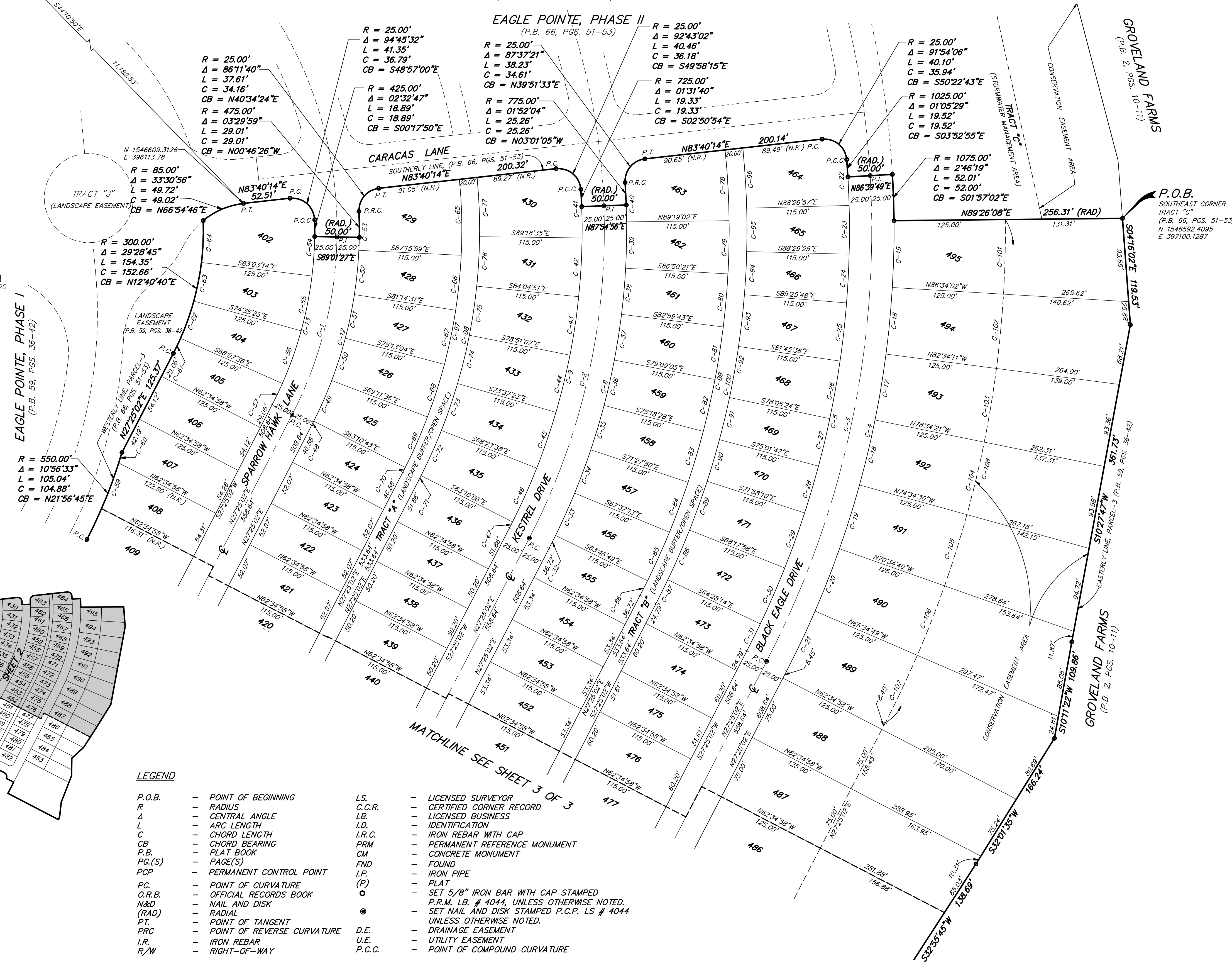
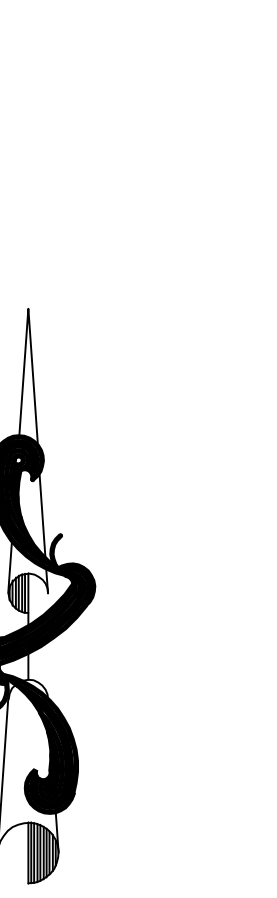


EAGLE POINTE PHASE IV

A REPLAT

REPLATTING A PORTION OF PARCELS 1, 2 AND 3,
EAGLE POINTE, PHASE I, AS RECORDED IN PLAT BOOK 59, PAGES 36 THROUGH 42
LOCATED IN SECTION 9, TOWNSHIP 22 SOUTH, RANGE 25 EAST
CITY OF GROVELAND, LAKE COUNTY, FLORIDA

FOUND CM. WITH ALUMINUM DISK STAMPED "L662"



CURVE	RADIUS	DELTA	LENGTH	CHORD	CH. BEARING
C-1	450.00'	26°26'28"	207.67'	205.83'	N141°11'47"E
C-2	750.00'	29°30'05"	366.17'	361.92'	N12°39'59"E
C-3	1050.00'	30°45'13"	563.59'	556.85'	N12°02'25"E
C-4	1075.00'	30°45'13"	570.10'	563.36'	N12°02'25"E
C-5	1025.00'	30°45'13"	550.17'	543.59'	N12°02'25"E
C-6	25.00'	90°00'00"	39.27'	35.36'	N72°25'02"E
C-7	25.00'	90°00'00"	39.27'	35.36'	N17°34'58"W
C-8	775.00'	29°30'05"	399.04'	394.65'	N12°39'59"E
C-9	725.00'	29°30'05"	373.30'	369.19'	N12°39'59"E
C-10	25.00'	90°00'00"	39.27'	35.36'	S72°25'02"W
C-11	25.00'	90°00'00"	39.27'	35.36'	N17°34'58"W
C-12	475.00'	26°26'28"	219.21'	217.27'	N141°11'47"E
C-13	425.00'	26°26'28"	196.13'	194.40'	N141°11'47"E
C-14	25.00'	90°00'00"	39.27'	35.36'	S72°25'02"W
C-15	1075.00'	3°59'51"	75.00'	74.98'	N01°26'03"E
C-16	1075.00'	3°59'51"	75.00'	74.98'	N05°25'53"E
C-17	1075.00'	3°59'51"	75.00'	74.98'	N09°25'44"E
C-18	1075.00'	3°59'51"	75.00'	74.98'	N13°25'35"E
C-19	1075.00'	3°59'51"	75.00'	74.98'	N17°25'25"E
C-20	1075.00'	3°59'51"	75.00'	74.98'	N21°25'16"E
C-21	1075.00'	3°59'51"	75.00'	74.98'	N25°25'06"E
C-22	1025.00'	2°52'37"	51.47'	51.46'	S02°39'21"E
C-23	1025.00'	3°01'38"	54.75'	54.75'	S00°11'14"E
C-24	1025.00'	3°01'38"	54.75'	54.74'	S03°10'23"W
C-25	1025.00'	3°01'38"	54.75'	54.74'	S06°09'32"W
C-26	1025.00'	3°01'38"	54.75'	54.74'	S09°08'41"W
C-27	1025.00'	3°01'38"	54.75'	54.74'	S12°07'50"W
C-28	1025.00'	3°01'38"	54.75'	54.74'	S15°07'00"W
C-29	1025.00'	3°01'38"	54.75'	54.74'	S18°06'09"W
C-30	1025.00'	3°01'38"	54.75'	54.74'	S21°05'18"W
C-31	1025.00'	3°01'38"	54.75'	54.74'	S24°04'27"W
C-32	775.00'	1°11'51"	16.20'	16.20'	N24°19'06"E
C-33	775.00'	3°50'24"	51.94'	51.93'	N24°17'59"E
C-34	775.00'	3°50'24"	51.99'	51.98'	N20°27'28"E
C-35	775.00'	3°50'24"	51.99'	51.98'	N16°36'51"E
C-36	775.00'	3°50'24"	51.99'	51.98'	N12°46'13"E
C-37	775.00'	3°50'24"	51.99'	51.98'	N08°55'36"E
C-38	775.00'	3°50'24"	51.99'	51.98'	N05°04'59"E
C-39	775.00'	3°50'24"	51.99'	51.98'	N01°14'20"E
C-40	775.00'	3°16'09"	44.22'	44.22'	N02°19'03"W
C-41	725.00'	4°18'09"	54.44'	54.43'	S01°27'39"E
C-42	725.00'	5°13'44"	66.16'	66.14'	S03°18'17"W
C-43	725.00'	5°13'44"	66.16'	66.14'	S08°32'01"W
C-44	725.00'	5°13'44"	66.16'	66.14'	S13°45'45"W
C-45	725.00'	5°13'44"	66.16'	66.15'	S18°59'29"W
C-46	725.00'	5°13'44"	66.16'	66.10'	S24°13'08"W
C-47	725.00'	0°35'08"	7.41'	7.41'	S27°07'28"W
C-48	475.00'	0°35'45"	4.94'	4.94'	N27°07'09"E
C-49	475.00'	6°00'53"	49.86'	49.84'	N23°48'51"E
C-50	475.00'	6°01'28"	49.94'	49.92'	N17°47'40"E
C-51	475.00'	6°01'28"	49.94'	49.92'	N11°46'13"E
C-52	475.00'	6°01'28"	49.94'	49.92'	N05°44'55"E
C-53	475.00'	5°15'27"	43.59'	43.57'	N00°06'12"E
C-54	425.00'	6°31'00"	63.12'	63.12'	S02°41'16"W
C-55	425.00'	8°27'49"	62.78'	62.72'	S11°04'11"W
C-56	425.00'	8°27'49"	62.78'	62.72'	S19°38'30"W
C-57	425.00'	3°52'38"	26.29'	26.28'	S25°38'43"W
C-58	550.00'	3°52'38"	39.05'	39.04'	S29°20'07"E
C-59	550.00'	3°52'38"	39.05'	39.04'	N20°19'27"E
C-60	550.00'	1°16'42"	12.27'	12.27'	N17°06'50"E
C-61	300.00'	3°32'32"	18.55'	18.54'	N25°38'46"E
C-62	300.00'	8°27'49"	44.32'	44.28'	N19°38'35"E
C-63	300.00'	8°27'49"	44.32'	44.28'	N11°04'46"E
C-64	300.00'	9°00'34"	47.17'	47.12'	N02°26'34"E
C-65	590.00'	8°16'09"	89.14'	88.07'	S01°24'02"E
C-66	590.00'	8°16'09"	89.14'	88.07'	S04°44'26"E
C-67	590.00'	6°01'28"	62.03'	62.01'	S11°46'13"W
C-68	590.00'	6°01'28"	62.03'	62.01'	S17°47'40"W
C-69	590.00'	6°00'53"	61.94'	61.91'	S23°48'51"W
C-70	590.00'	0°35'45"	6.13'	6.13'	S27°07'08"W
C-71	610.00'	0°35'08"	6.23'	6.23'	N2°07'28"E
C-72	610.00'	5°13'32"	55.63'	55.61'	N24°13'08"E
C-73	610.00'	5°13'45"	55.62'	55.65'	N18°58'29"E
C-74	610.00'	5°13'44"	55.62'	55.65'	N13°45'45"E
C-75	610.00'	5°13'44"	55.62'	55.65'	N08°32'01"E
C-76	610.00'	5°13'44"	55.62'	55.65'	N03°18'17"E
C-77	610.00'	6°15'03"	66.55'	66.52'	N02°26'07"W
C-78	890.00'	5°07'11"	79.53'	79.50'	S03°14'34"E
C-79	890.00'	3°50'37"	59.70'	59.69'	S01°14'21"W
C-80	890.00'	3°50'37"	59.70'	59.70'	S05°04'58"W
C-81	890.00'	3°50'37"	59.71'	59.70'	S08°55'36"W
C-82	890.00'	3°50'37"	59.70'	59.69'	S12°46'14"W
C-83	890.00'	3°50'37"	59.71'	59.70'	S16°36'51"W
C-84	890.00'	3°50'37"	59.70'	59.69'	S20°27'28"W
C-85	890.00'	3°50'24"	59.65'	59.64'	S24°17'59"W
C-86	890.00'	1°11'51"	18.60'	18.60'	S29°40'06"W
C-87	910.00'	1°53'16"	29.98'	29.98'	N26°28'24"E
C-88	910.00'	3°49'44"	60.81'	60.80'	N23°36'54"E
C-89	910.00'	3°40'12"	58.29'	58.28'	N19°51'56"E
C-90	910.00'	3°03'37"	48.60'	48.60'	N16°30'01"E
C-91	910.00'	3°03'37"	48.60'	48.60'	N13°26'25"E
C-92	910.00'	3°40'12"	58.29'	58.28'	N10°24'30"E
C-93	910.00'	3°40'12"	58.29'	58.28'	N06°24'18"E
C-94	910.00'	3°03'37"	48.60'	48.60'	N03°02'24"E
C-95	910.00'	3°03'37"	48.61'	48.60'	N00°01'14"W
C-96	910.00'	4°15'48"	67.71'	67.70'	N03°40'57"W
C-97	590.00'	3°25'06"	339.32'	334.66'	N10°56'29"E
C-98	610.00'	3°25'40"	351.10'	346.27'	N10°55'42"E
C-99	890.00'	3°31'31"	516.01'	508.82'	N10°48'26"E
C-100	910.00'	3°31'52"	527.79'	520.43'	N10°48'05"E
C-101	1200.00'	3°59'51"	83.72'	83.70'	N01°26'03"E
C-102	1200.00'	3°59'51"	83.72'	83.70'	N05°25'53"E
C-103	1200.00'	3°59'51"	83.72'	83.70'	N09°25'44"E
C-104	1200.00'	3°59'51"	83.72'	83.70'	N13°25'35"E
C-105	1200.00'	3°59'51"	83.72'	83.70'	N17°25'25"E
C-106	1200.00'	3°59'51"	83.72'	83.70'	N21°25'16"E
C-107	1200.00'	3°59'51"	83.72'	83.70'	N25°25'06"E
C-108	1200.00'	2°58'54"	586.05'	580.24'	N13°25'55"E

- LEGEND**
- P.O.B. - POINT OF BEGINNING
 - R - RADIUS
 - Δ - CENTRAL ANGLE
 - L - ARC LENGTH
 - C - CHORD LENGTH
 - CB - CHORD BEARING
 - P.B. - PLAT BOOK
 - PG.(S) - PAGE(S)
 - PCP - PERMANENT CONTROL POINT
 - P.C. - POINT OF CURVATURE
 - O.R.B. - OFFICIAL RECORDS BOOK
 - N&D - NAIL AND DISK
 - (RAD) - RADIAL
 - P.T. - POINT OF TANGENT
 - PRC - POINT OF REVERSE CURVATURE
 - I.R. - IRON REBAR
 - R/W - RIGHT-OF-WAY
 - L.S. - LICENSED SURVEYOR
 - C.C.R. - CERTIFIED CORNER RECORD
 - LB. - LICENSED BUSINESS
 - I.D. - IDENTIFICATION
 - I.R.C. - IRON REBAR WITH CAP
 - PRM - PERMANENT REFERENCE MONUMENT
 - CM - CONCRETE MONUMENT
 - FND - FOUND
 - I.P. - IRON PIPE
 - (P) - PLAT
 - - SET 5/8" IRON BAR WITH CAP STAMPED P.R.M. LB. # 4044, UNLESS OTHERWISE NOTED.
 - - SET NAIL AND DISK STAMPED P.C.P. LS # 4044 UNLESS OTHERWISE NOTED.
 - D.E. - DRAINAGE EASEMENT
 - U.E. - UTILITY EASEMENT
 - P.C.C. - POINT OF COMPOUND CURVATURE

KEY SHEET (NOT TO SCALE)