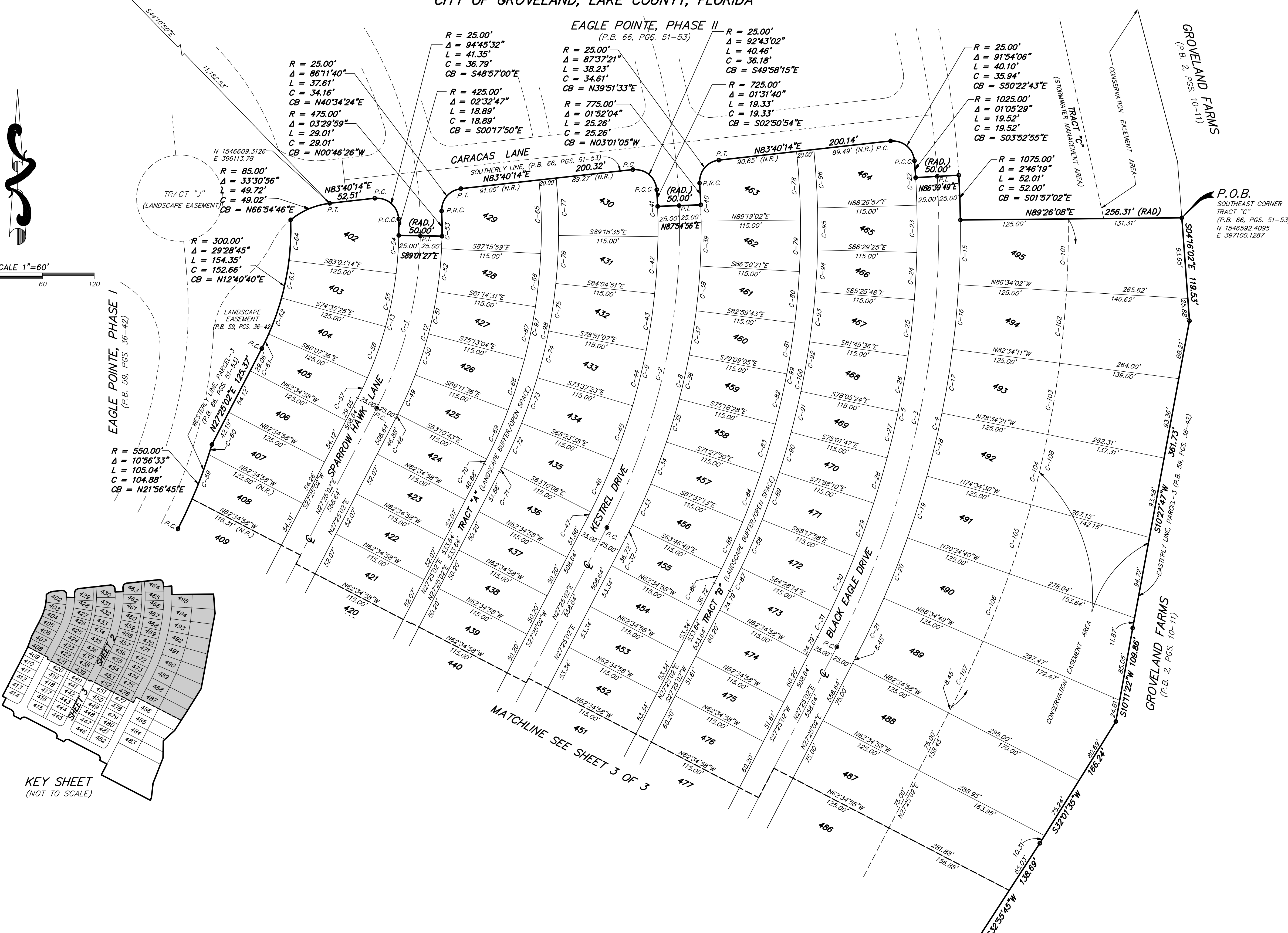


EAGLE POINTE PHASE IV

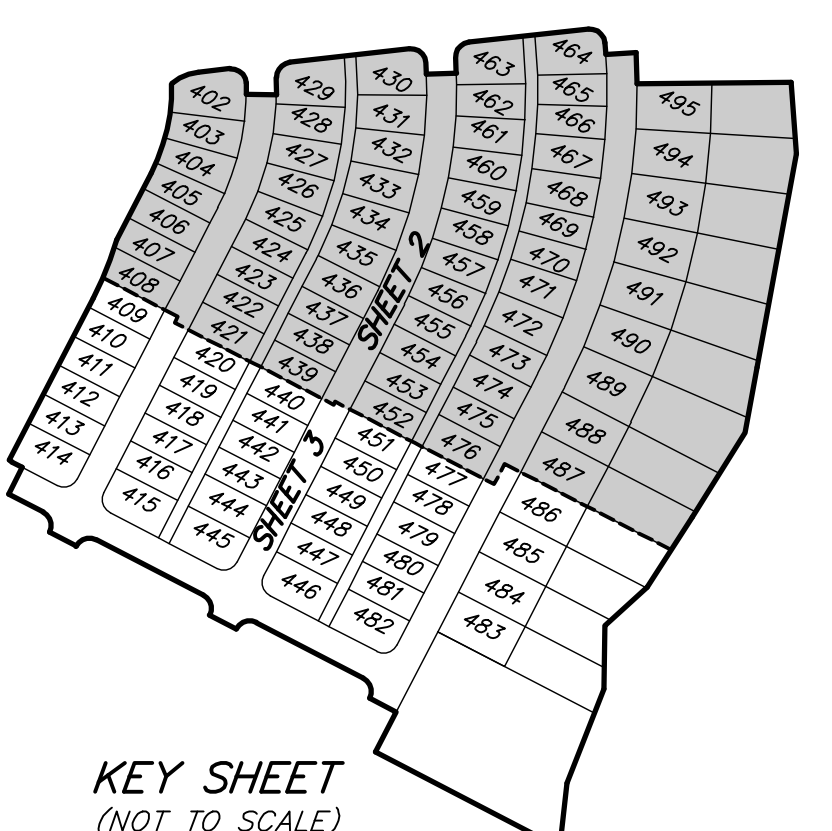
A REPLAT

REPLATTING A PORTION OF PARCELS 1, 2 AND 3,
EAGLE POINTE, PHASE I, AS RECORDED IN PLAT BOOK 59, PAGES 36 THROUGH 42
LOCATED IN SECTION 9, TOWNSHIP 22 SOUTH, RANGE 25 EAST
CITY OF GROVELAND, LAKE COUNTY, FLORIDA

FOUND CM. WITH ALUMINUM DISK STAMPED "L662"



EAGLE POINTE, PHASE I
(P.B. 59, PGS. 36-42)



R = 550.00'
Δ = 10°56'33"
L = 105.04'
C = 104.88'
CB = N21°56'45"E

R = 85.00'
Δ = 33°30'56"
L = 49.72'
C = 49.02'
CB = N66°54'46"E

R = 25.00'
Δ = 86°11'40"
L = 37.61'
C = 34.16'
CB = N40°34'24"E

R = 25.00'
Δ = 94°45'32"
L = 41.35'
C = 36.79'
CB = S48°57'00"E

R = 25.00'
Δ = 87°37'21"
L = 38.23'
C = 34.61'
CB = N39°51'33"E

R = 25.00'
Δ = 92°43'02"
L = 40.46'
C = 36.18'
CB = S49°58'15"E

R = 25.00'
Δ = 91°54'06"
L = 40.10'
C = 35.94'
CB = S50°22'43"E

R = 1075.00'
Δ = 2°46'19"
L = 52.01'
C = 52.01'
CB = S01°57'02"E

CURVE	RADIUS	DELTA	LENGTH	CHORD	CH. BEARING
C-1	450.00'	26°26'28"	207.67'	205.83'	N141°11'47"E
C-2	750.00'	29°30'05"	366.17'	361.92'	N12°39'59"E
C-3	1050.00'	30°45'13"	563.59'	556.85'	N12°02'25"E
C-4	1075.00'	30°45'13"	570.01'	563.70'	N12°02'25"E
C-5	1025.00'	31°50'41"	569.69'	562.39'	N11°29'41"E
C-6	25.00'	90°00'00"	39.27'	35.36'	N72°25'02"E
C-7	25.00'	90°00'00"	39.27'	35.36'	N17°34'58"W
C-8	775.00'	29°30'05"	399.04'	394.65'	N12°39'59"E
C-9	725.00'	29°30'05"	373.30'	369.19'	N12°39'59"E
C-10	25.00'	90°00'00"	39.27'	35.36'	S72°25'02"W
C-11	25.00'	90°00'00"	39.27'	35.36'	N17°34'58"W
C-12	475.00'	26°26'28"	219.21'	217.27'	N141°11'47"E
C-13	425.00'	26°26'28"	196.13'	194.40'	N141°11'47"E
C-14	25.00'	90°00'00"	39.27'	35.36'	S72°25'02"W
C-15	1075.00'	3°59'51"	75.00'	74.98'	N01°26'03"E
C-16	1075.00'	3°59'51"	75.00'	74.98'	N05°25'53"E
C-17	1075.00'	3°59'51"	75.00'	74.98'	N09°25'44"E
C-18	1075.00'	3°59'51"	75.00'	74.98'	N13°25'35"E
C-19	1075.00'	3°59'51"	75.00'	74.98'	N17°25'25"E
C-20	1075.00'	3°59'51"	75.00'	74.98'	N21°25'16"E
C-21	1075.00'	3°59'51"	75.00'	74.98'	N25°25'06"E
C-22	1025.00'	2°52'37"	51.47'	51.47'	S02°52'37"E
C-23	1025.00'	3°01'38"	54.75'	54.75'	S00°11'14"E
C-24	1025.00'	3°10'37"	54.75'	54.74'	S03°10'23"W
C-25	1025.00'	3°19'36"	54.75'	54.74'	S05°59'32"W
C-26	1025.00'	3°28'35"	54.75'	54.74'	S08°48'41"W
C-27	1025.00'	3°37'34"	54.75'	54.74'	S11°37'50"W
C-28	1025.00'	3°46'33"	54.75'	54.74'	S14°27'09"W
C-29	1025.00'	3°55'32"	54.75'	54.74'	S17°16'28"W
C-30	1025.00'	4°04'31"	54.75'	54.74'	S19°05'47"W
C-31	1025.00'	4°13'30"	54.75'	54.74'	S20°55'06"W
C-32	775.00'	1°11'51"	16.20'	16.20'	N28°10'06"E
C-33	775.00'	3°50'24"	51.94'	51.93'	N24°17'59"E
C-34	775.00'	3°50'24"	51.99'	51.98'	N20°27'28"E
C-35	775.00'	3°50'24"	51.99'	51.98'	N16°36'51"E
C-36	775.00'	3°50'24"	51.99'	51.98'	N12°46'13"E
C-37	775.00'	3°50'24"	51.99'	51.98'	N08°55'36"E
C-38	775.00'	3°50'24"	51.99'	51.98'	N05°04'59"E
C-39	775.00'	3°50'24"	51.99'	51.98'	N01°14'20"E
C-40	775.00'	3°16'09"	44.22'	44.22'	N02°19'03"W
C-41	725.00'	4°18'09"	54.44'	54.43'	S01°27'39"E
C-42	725.00'	5°13'44"	66.16'	66.14'	S03°18'17"W
C-43	725.00'	5°13'44"	66.16'	66.14'	S08°32'01"W
C-44	725.00'	5°13'44"	66.16'	66.14'	S13°45'45"W
C-45	725.00'	5°13'44"	66.16'	66.15'	S18°59'29"W
C-46	725.00'	5°13'44"	66.16'	66.10'	S24°13'08"W
C-47	725.00'	0°35'08"	7.41'	7.41'	S27°07'28"W
C-48	475.00'	0°35'45"	4.94'	4.94'	N27°07'09"E
C-49	475.00'	6°00'53"	49.86'	49.84'	N23°48'51"E
C-50	475.00'	6°01'28"	49.94'	49.92'	N17°47'40"E
C-51	475.00'	6°01'28"	49.94'	49.92'	N11°46'13"E
C-52	475.00'	6°01'28"	49.94'	49.92'	N05°44'55"E
C-53	475.00'	5°15'27"	43.59'	43.57'	N00°06'12"E
C-54	425.00'	8°31'00"	63.12'	63.12'	S02°41'16"W
C-55	425.00'	8°27'49"	62.78'	62.72'	S11°04'11"W
C-56	425.00'	8°27'49"	62.78'	62.72'	S19°38'30"W
C-57	425.00'	3°32'38"	26.29'	26.28'	S25°38'43"W
C-58	590.00'	3°50'24"	59.05'	59.04'	S03°26'07"E
C-59	590.00'	3°50'24"	59.05'	59.04'	N20°26'07"E
C-60	550.00'	1°16'42"	12.27'	12.27'	N17°06'50"E
C-61	300.00'	3°32'32"	18.55'	18.54'	N25°38'46"E
C-62	300.00'	8°27'49"	44.32'	44.28'	N19°38'35"E
C-63	300.00'	8°27'49"	44.32'	44.28'	N11°04'46"E
C-64	300.00'	9°00'34"	47.17'	47.12'	N02°26'34"E
C-65	590.00'	8°16'09"	68.14'	68.07'	S01°24'02"E
C-66	590.00'	8°16'09"	68.04'	68.01'	S06°44'26"E
C-67	590.00'	6°01'28"	62.03'	62.00'	S11°46'13"W
C-68	590.00'	6°01'28"	62.04'	62.01'	S17°47'40"W
C-69	590.00'	6°00'53"	61.94'	61.91'	S23°48'51"W
C-70	590.00'	0°35'45"	6.13'	6.13'	S27°07'08"W
C-71	610.00'	0°35'08"	6.23'	6.23'	N2°70'28"E
C-72	610.00'	5°13'44"	55.61'	55.61'	N24°13'08"E
C-73	610.00'	5°13'44"	55.62'	55.65'	N18°58'29"E
C-74	610.00'	5°13'44"	55.62'	55.65'	N13°45'45"E
C-75	610.00'	5°13'44"	55.62'	55.65'	N08°32'01"E
C-76	610.00'	5°13'44"	55.62'	55.65'	N03°18'17"E
C-77	610.00'	6°15'03"	66.55'	66.52'	N02°26'07"W
C-78	890.00'	5°07'11"	79.53'	79.50'	S03°14'34"E
C-79	890.00'	3°50'24"	59.70'	59.69'	S01°14'21"W
C-80	890.00'	3°50'24"	59.71'	59.70'	S05°04'58"W
C-81	890.00'	3°50'24"	59.71'	59.70'	S08°55'36"W
C-82	890.00'	3°50'24"	59.70'	59.69'	S12°46'14"W
C-83	890.00'	3°50'24"	59.71'	59.70'	S16°36'51"W
C-84	890.00'	3°50'24"	59.70'	59.69'	S20°27'28"W
C-85	890.00'	3°50'24"	59.65'	59.64'	S24°17'59"W
C-86	890.00'	1°11'51"	18.60'	18.60'	S28°40'06"W
C-87	910.00'	1°53'16"	29.98'	29.98'	N26°28'24"E
C-88	910.00'	3°49'44"	60.81'	60.80'	N23°36'54"E
C-89	910.00'	3°40'12"	58.29'	58.28'	N19°51'56"E
C-90	910.00'	3°30'37"	48.60'	48.60'	N16°30'01"E
C-91	910.00'	3°30'37"	48.60'	48.60'	N13°26'25"E
C-92	910.00'	3°40'12"	58.29'	58.28'	N10°24'30"E
C-93	910.00'	3°40'12"	58.29'	58.28'	N06°24'18"E
C-94	910.00'	3°30'37"	48.60'	48.60'	N03°22'24"E
C-95	910.00'	3°30'37"	48.61'	48.60'	N00°01'14"W
C-96	910.00'	4°15'48"	67.71'	67.70'	N03°40'57"W
C-97	910.00'	3°25'06"	339.32'	334.66'	N10°56'29"E
C-98	910.00'	3°25'06"	351.10'	346.27'	N10°55'42"E
C-99	890.00'	3°31'31"	516.01'	508.82'	N10°48'26"E
C-100	910.00'	3°31'35"	520.43'	512.04'	N10°48'05"E
C-101	1200.00'	3°59'51"	83.72'	83.70'	N01°26'03"E
C-102	1200.00'	3°59'51"	83.72'	83.70'	N05°25'53"E
C-103	1200.00'	3°59'51"	83.72'	83.70'	N09°25'44"E
C-104	1200.00'	3°59'51"	83.72'	83.70'	N13°25'35"E
C-105	1200.00'	3°59'51"	83.72'	83.70'	N17°25'25"E
C-106	1200.00'	3°59'51"	83.72'	83.70'	N21°25'16"E
C-107	1200.00'	3°59'51"	83.72'	83.70'	N25°25'06"E
C-108	1200.00'	2°58'54"	586.05'	580.24'	N13°25'55"E