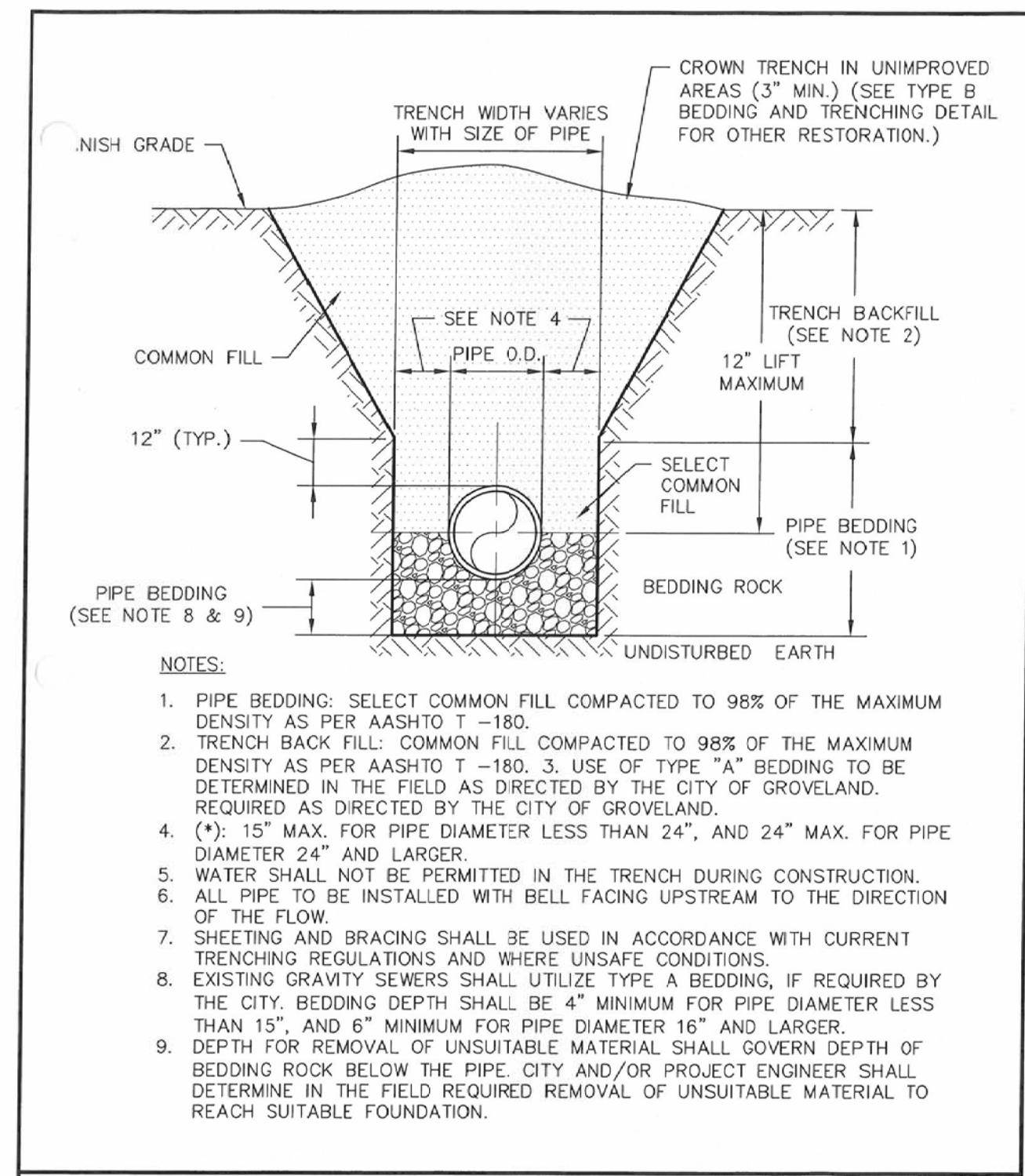
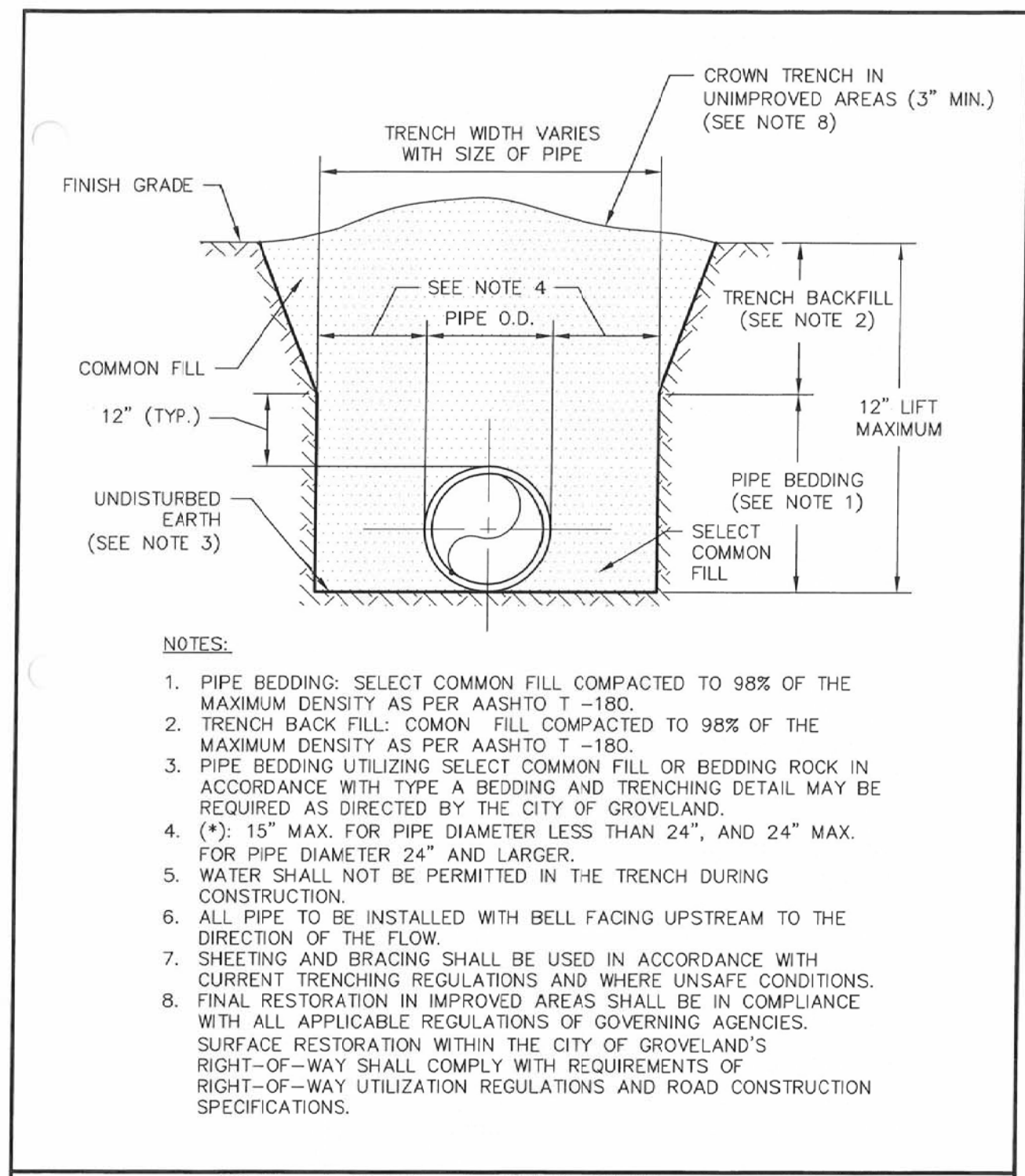


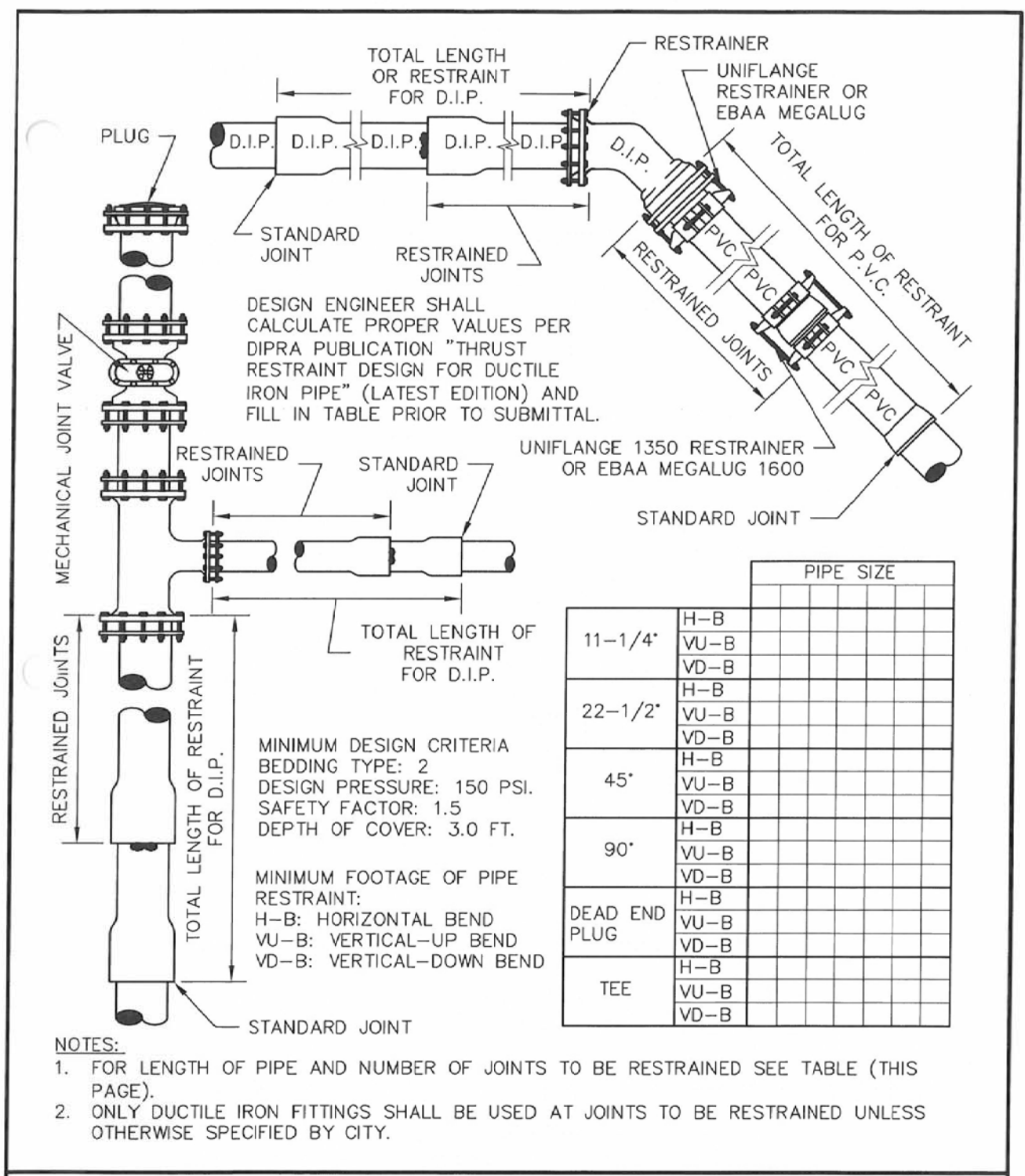
CITY OF GROVELAND STANDARD DETAILS: GENERAL
TYPE III SILT FENCE
 DATE: JULY 7, 2008
 SCALE: N.T.S.
G-2



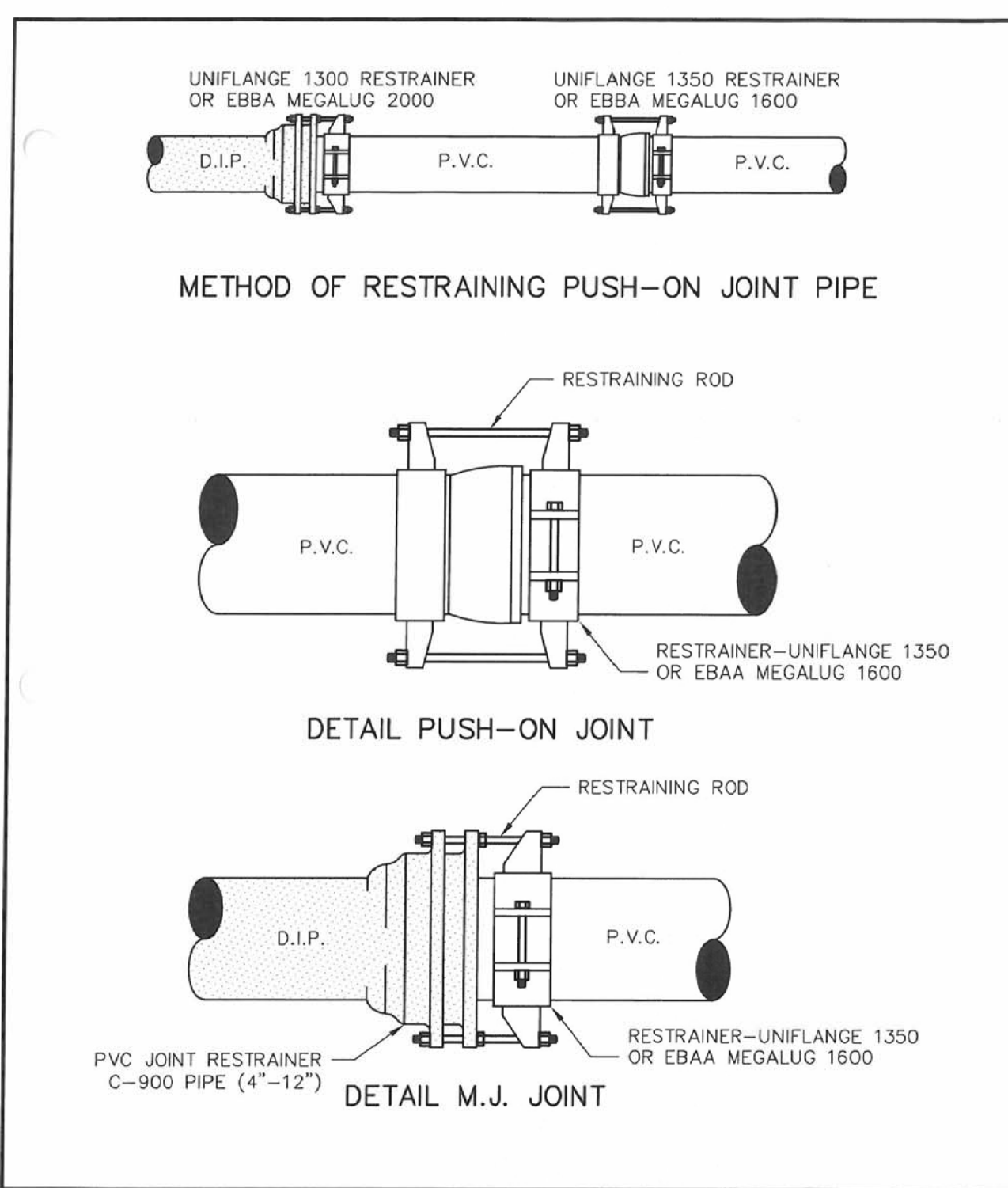
CITY OF GROVELAND STANDARD DETAILS: GENERAL
CLASS A BEDDING AND TRENCHING DETAIL
 DATE: JULY 7, 2008
 SCALE: N.T.S.
G-4



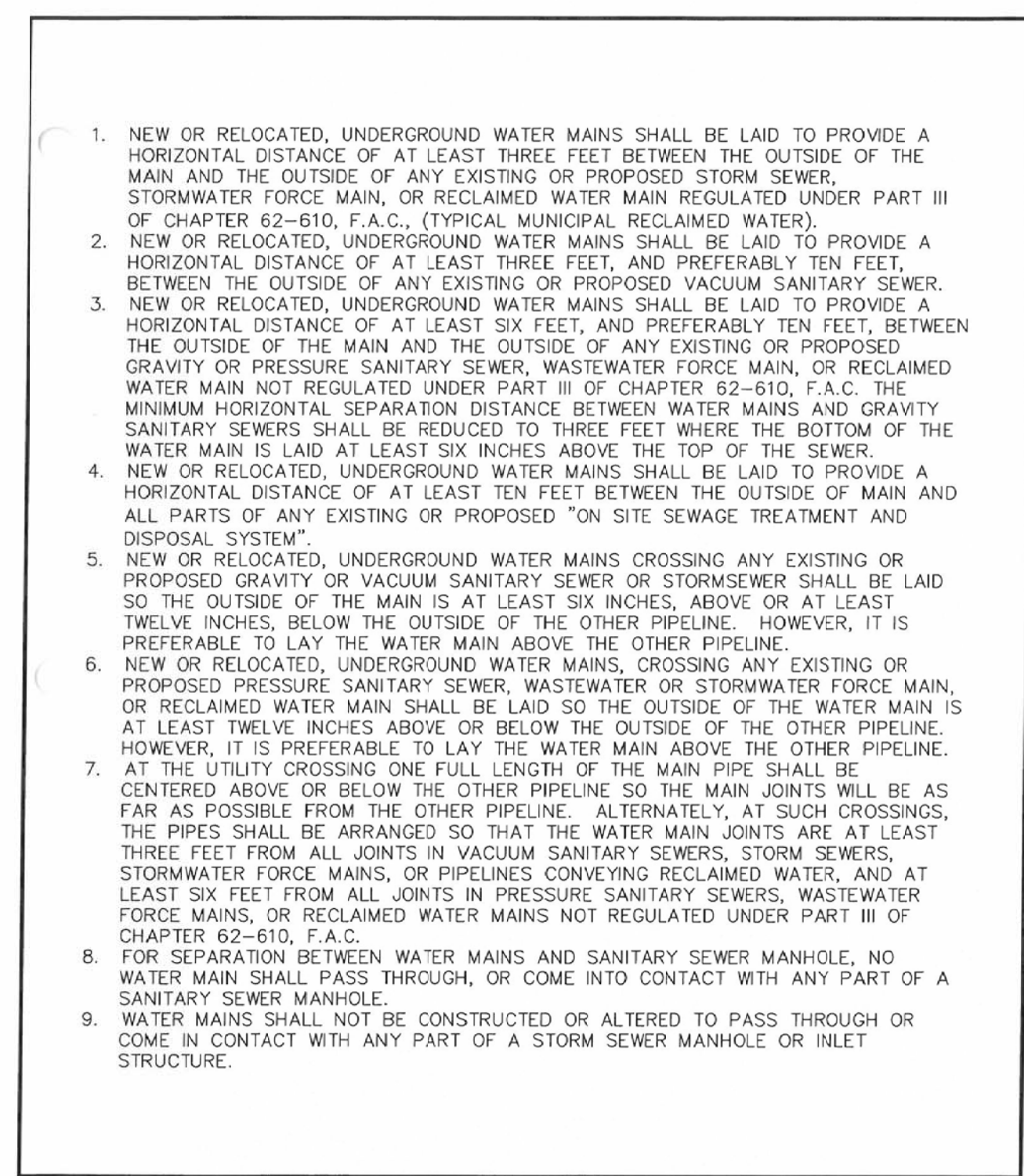
CITY OF GROVELAND STANDARD DETAILS: GENERAL
CLASS B BEDDING AND TRENCHING DETAIL
 DATE: JULY 7, 2008
 SCALE: N.T.S.
G-5



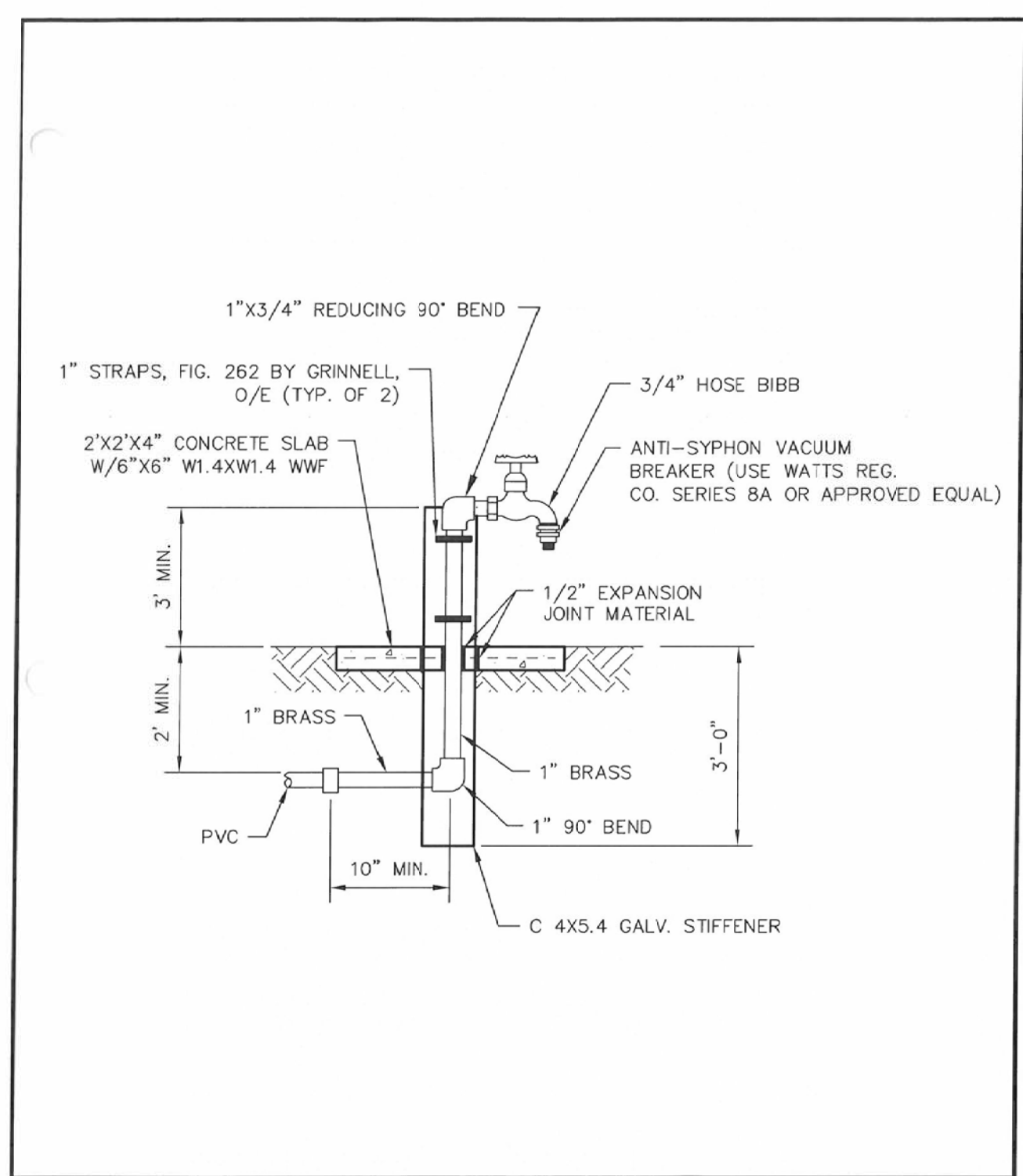
CITY OF GROVELAND STANDARD DETAILS: GENERAL
RESTRAINTED JOINTS DETAILS
 DATE: JULY 7, 2008
 SCALE: N.T.S.
G-7



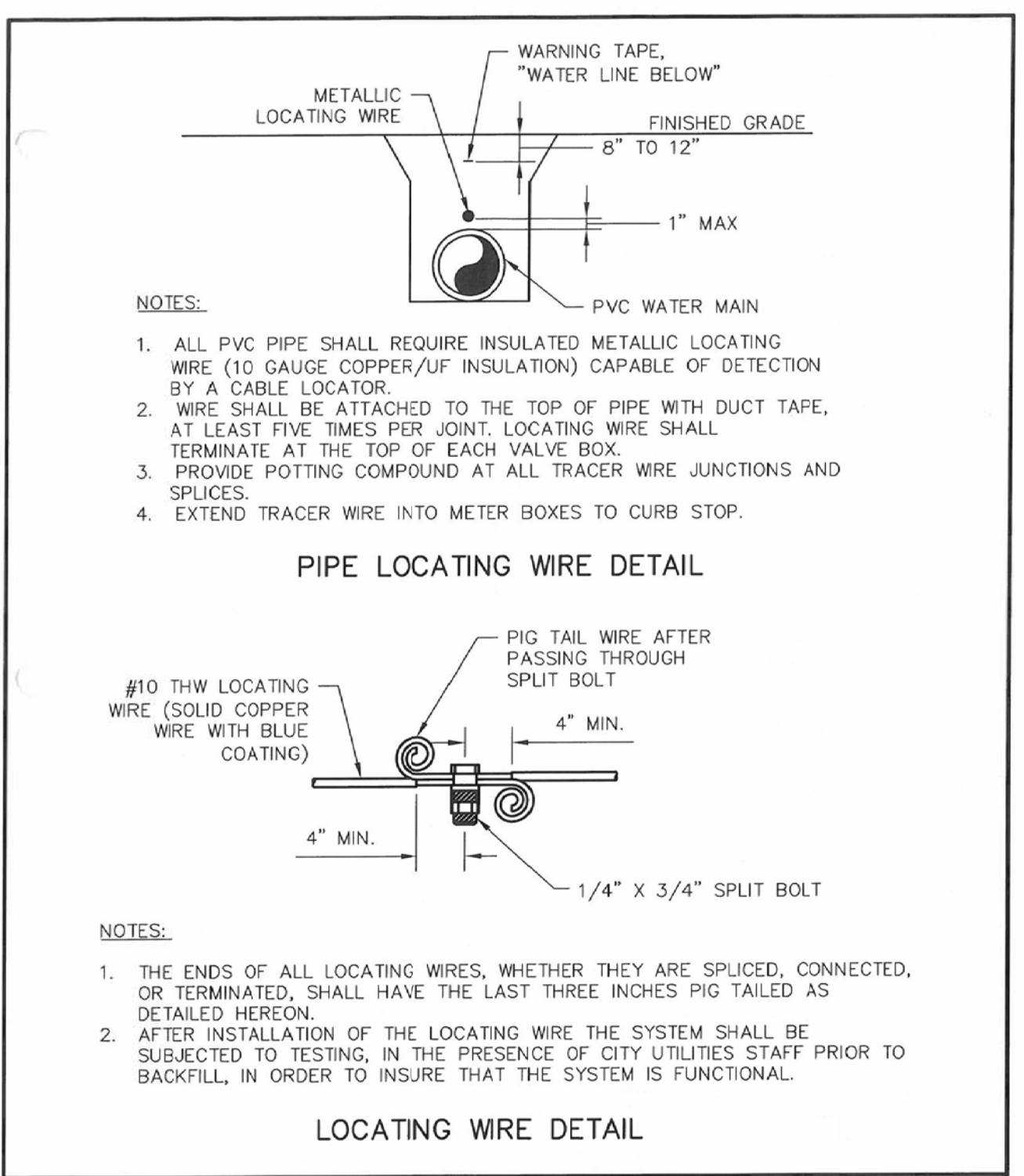
CITY OF GROVELAND STANDARD DETAILS: GENERAL
JOINT RESTRAINTS P.V.C. C-900 PIPE (4" TO 12")
 DATE: JULY 7, 2008
 SCALE: N.T.S.
G-8



CITY OF GROVELAND STANDARD DETAILS: GENERAL
PIPING CLEARANCE NOTES
 DATE: JULY 7, 2008
 SCALE: N.T.S.
G-11



CITY OF GROVELAND STANDARD DETAILS: GENERAL
HOSE BIBB & VACUUM BREAKER
 DATE: JULY 7, 2008
 SCALE: N.T.S.
G-15



CITY OF GROVELAND STANDARD DETAILS: GENERAL
PVC PIPE LOCATING WIRE DETAILS
 DATE: JULY 7, 2008
 SCALE: N.T.S.
G-16

FRESENIUS KIDNEY CARE
DIALYSIS CLINIC
 CLERMONT WEST

LOCATION:
 (ADDRESS TO BE ASSIGNED)
 N.W.Q. OF C.R. 565A & S.R. 50
 GROVELAND
 LAKE COUNTY, FL 34736

DEVELOPER:
DOUGLAS C. McNAB,
 ARCHITECT
 8148 OLD FEDERAL ROAD
 MONTGOMERY, AL 36117
 TEL (334) 271-3015

ENGINEER:
FORESITE group
 FL CA 26115
 Foresite Group, Inc.
 10150 Highland Manor Dr.
 Suite 210
 Tampa, FL 33610
 | 813.549.3250
 | 813.621.3580
 | www.fg-inc.net

SEAL:

REVISIONS	DATE

PROJECT MANAGER: BK
 DRAWING BY: JEC
 JURISDICTION: CITY OF GROVELAND, FL
 DATE: 19 MAY 2016

TITLE:
CITY OF GROVELAND DETAILS
 SHEET NUMBER: C-7.1
 SCALE:

JOB/FILE NUMBER: 865.001