

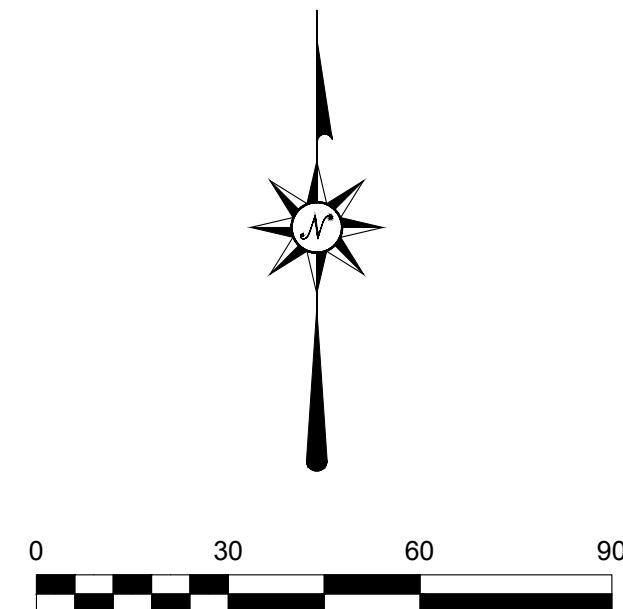
ALTA/NSPS LAND TITLE SURVEY

BOUNDARY AND TOPOGRAPHIC SURVEY OF

LOT 4C, GROVELAND SHOPPES NORTH
 AS RECORDED IN PLAT BOOK 64, PAGES 21 THROUGH 22, LYING IN SECTION 20, TOWNSHIP
 22 SOUTH, RANGE 25 EAST,
 PUBLIC RECORDS OF LAKE COUNTY, FLORIDA

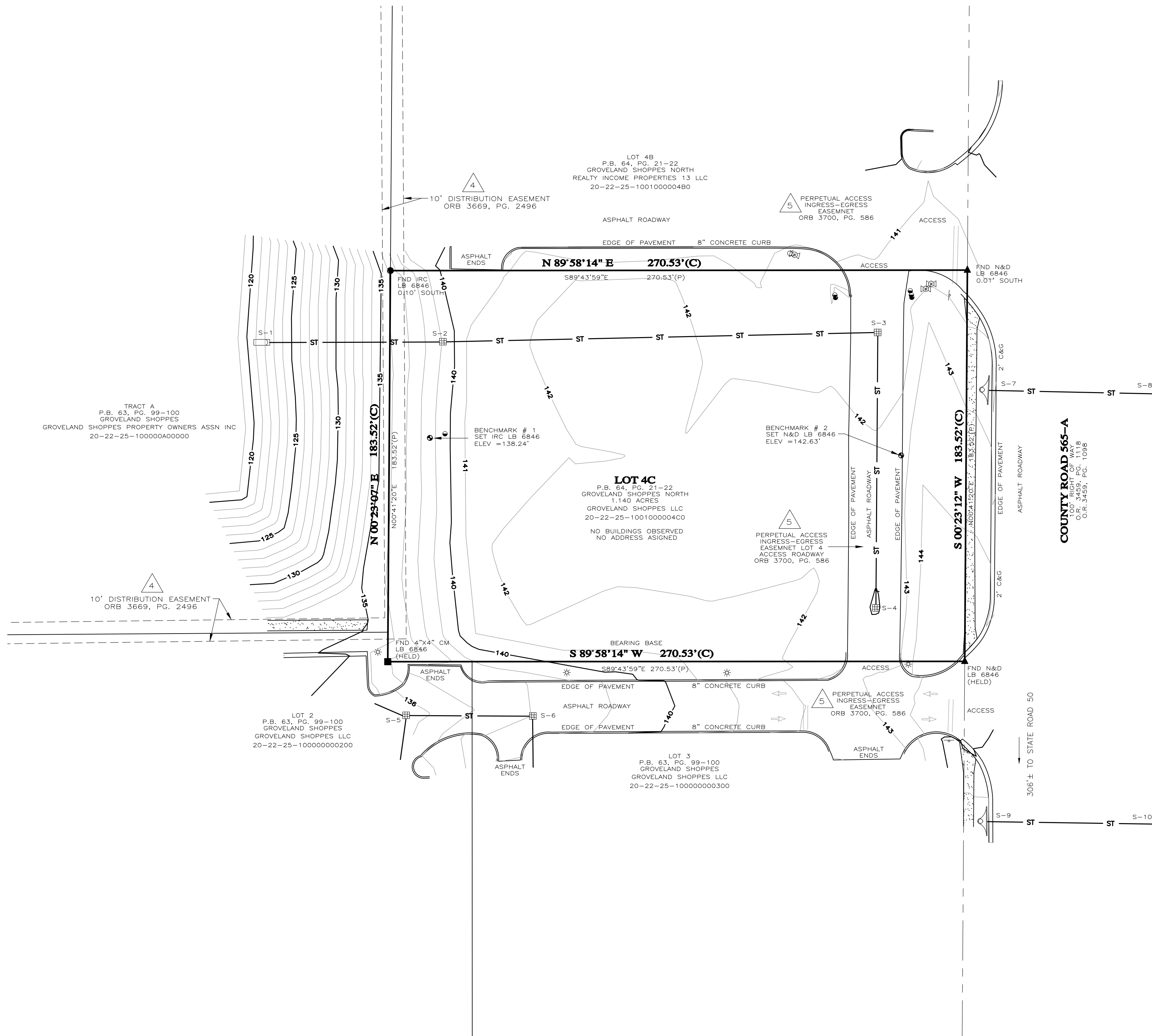
LEGEND

- * BOLLARD
- CATCH BASIN
- CLEANOUT
- ELECTRIC BOX
- UTILITY BOX
- GAS METER
- FIRE HYDRANT
- LIGHT POLE
- MANHOLE
- CURB INLET
- CURB INLET
- MITERED END SECTION
- SIGN
- TELEPHONE BOX
- WOOD POLE
- CONCRETE POLE
- GUY
- FOUND CONCRETE MONUMENT
- ▲ FOUND NAIL & DISK
- MONITORING WELL
- GREASE TRAP
- SANITARY MANHOLE
- STORM MANHOLE
- MANHOLE UNKNOWN TYPE
- BACKFLOW PREVENTER
- WATER METER
- WATER VALVE
- GAS VALVE
- IRRIGATION VALVE
- SANITARY SEWER VALVE
- H— WATER LINE
- R— RE-USE WATER LINE
- FO— FIBER OPTIC LINE
- FM— FORCE MAIN
- OHU— OVERHEAD UTILITIES
- ST— STORM PIPE
- UE— UNDERGROUND ELECTRIC
- E— OVERHEAD ELECTRIC
- G— UNDERGROUND GAS
- X— FENCE LINE
- CONCRETE
- MBX □ MAILBOX
- FND FOUND
- PCP PERMANENT CONTROL POINT
- PRM PERMANENT REFERENCE MONUMENT
- IRC IRON ROD & CAP
- N&D NAIL & DISK
- IR IRON ROD
- CM CONCRETE MONUMENT
- ORB OFFICIAL RECORDS BOOK
- (P) PER PLAT
- (C) CALCULATED
- (D) DEED
- (M) MEASURED
- ID IDENTIFICATION
- CONC CONCRETE
- MON MONUMENT
- RCP REINFORCED CONCRETE PIPE
- OUC ORLANDO UTILITIES COMMISSION
- C&G CONCRETE CURB & GUTTER
- INV INVERT
- RCP(E) REINFORCED CONCRETE PIPE ELLIPTICAL
- CUE COUNTY UTILITY EASEMENT
- DE DRAINAGE EASEMENT
- ME MAINTENANCE EASEMENT
- PS PARKING SPACES
- PB PLAT BOOK
- LSA LANDSCAPE AREA
- O/H OVERHANG AREA
- DEL DELTA ANGLE
- R RADIUS
- L ARC LENGTH
- CB CHORD BEARING
- CD CHORD DISTANCE
- CLF CHAIN LINK FENCE
- POB POINT OF BEGINNING
- LBE LANDSCAPE BUFFER EASEMENT
- ROW RIGHT OF WAY
- CL CENTERLINE
- SBL SETBACK LINE
- HDPE -
- S-1 STRUCTURE NO.
- △ EXCEPTION NUMBER



STRUCTURE TABLE

- S-1 MITERED END SECTION
INVERT = 118.59'
- S-2 TOP CATCH BASIN
ELEV = 139.07'
W.INV = 125.99' 18" HDPE
E.INV = 126.04' 15" HDPE
- S-3 TOP CATCH BASIN
ELEV = 141.01'
W.INV = 135.93' 15" HDPE
S.INV = 135.90' 15" HDPE
- S-4 TOP CATCH BASIN
ELEV = 141.90'
N.INV = 136.91' 15" HDPE
- S-5 TOP CATCH BASIN
ELEV = 135.46'
W.INV = 131.04' 18" HDPE
S.INV = 131.26' 15" HDPE
E.INV = 131.12' 18" HDPE
- S-6 TOP CATCH BASIN
ELEV = 138.03'
W.INV = 134.01'
S.INV = 134.05'
- S-7 TOP STORM MANHOLE
ELEV = 142.62'
E.INV = 135.75' 18" RCP
- S-8 TOP STORM MANHOLE
ELEV = 142.69'
W.INV = 135.33' 18" RCP
N.INV = 135.22' 18" RCP
S.INV = 135.28' 18" RCP
- S-9 TOP STORM MANHOLE
ELEV = 146.29'
E.INV = 139.59' 18" RCP
- S-10 TOP STORM MANHOLE
ELEV = 146.40'
W.INV = 139.02' 18" RCP
N.INV = 138.90' 18" RCP



REVISIONS:

ALTA/NSPS LAND TITLE SURVEY

OF
 LOT 4C, GROVELAND SHOPPES NORTH
 LYING IN SECTION 20, TOWNSHIP 22 SOUTH, RANGE 25 EAST
 LAKE COUNTY, FLORIDA

FOR
 MGB DEVELOPMENT SERVICES, LLC

LEADING EDGE
 LAND SERVICES
 A L. C. R. F. TITLE

8825 EXCHANGE DRIVE
 ORLANDO, FLORIDA 32809
 PHONE: (407) 351-6730
 WEB: www.leadingedges.com

FLORIDA LICENSED BUSINESS NUMBER LB 6846

DATE OF DRAWING: APRIL 15, 2016
 P.B. 64, PG. 21-22
 GROVELAND SHOPPES NORTH
 REALTY INCOME PROPERTIES 13 LLC
 20-22-25-100100000480
 LAST FIELD WORK: 4/13/2016
 CREW CHIEF(S): JC
 MANAGER: JDH | CADD: GJS
 PROJECT NUMBER: 821-16001
 COMPUTER FILE: 82116001A.DWG
 FIELD BOOK NUMBER: LE 1077
 SCALE: 1" = 30'
 SHEET 2 OF 2