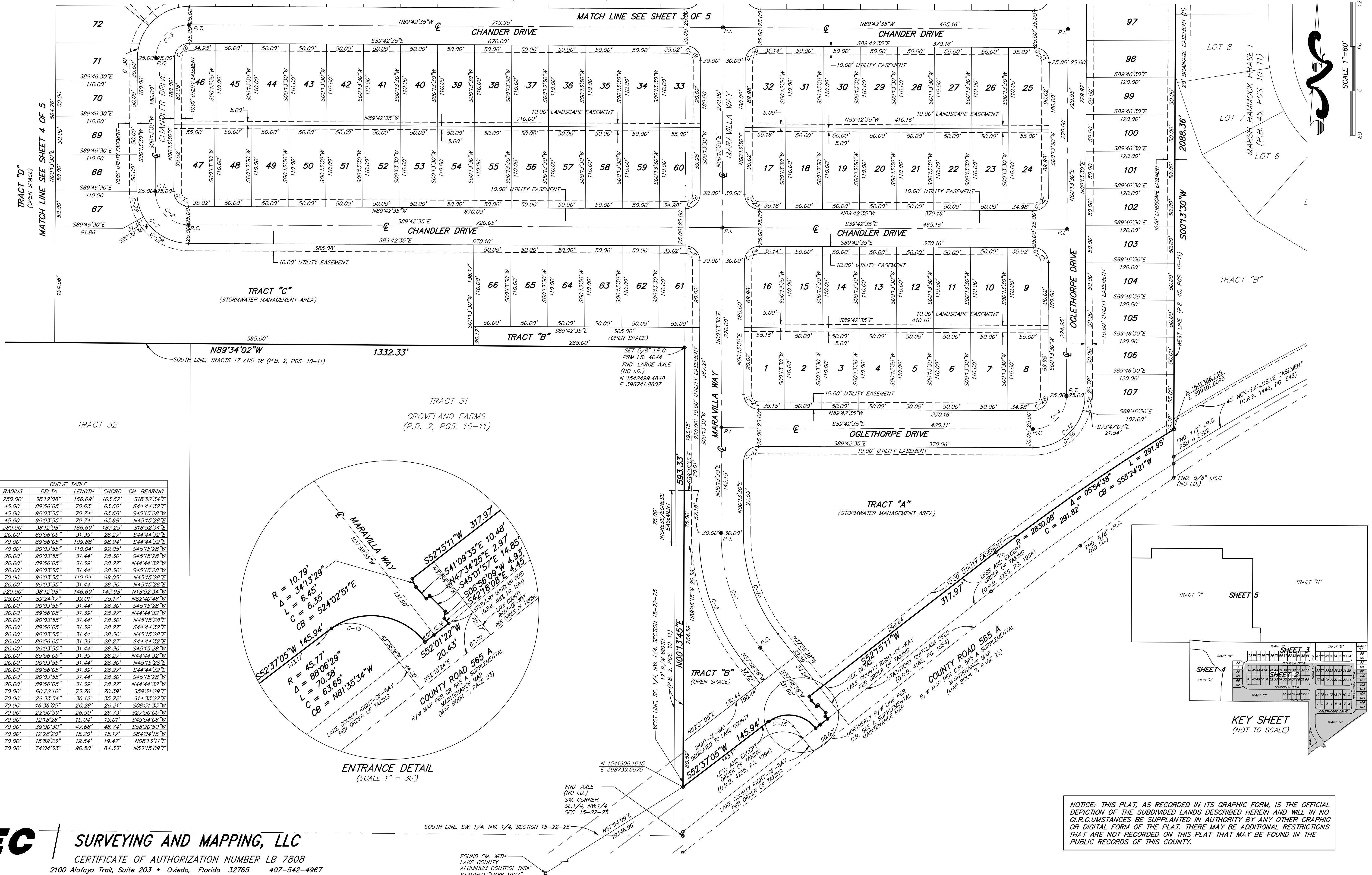
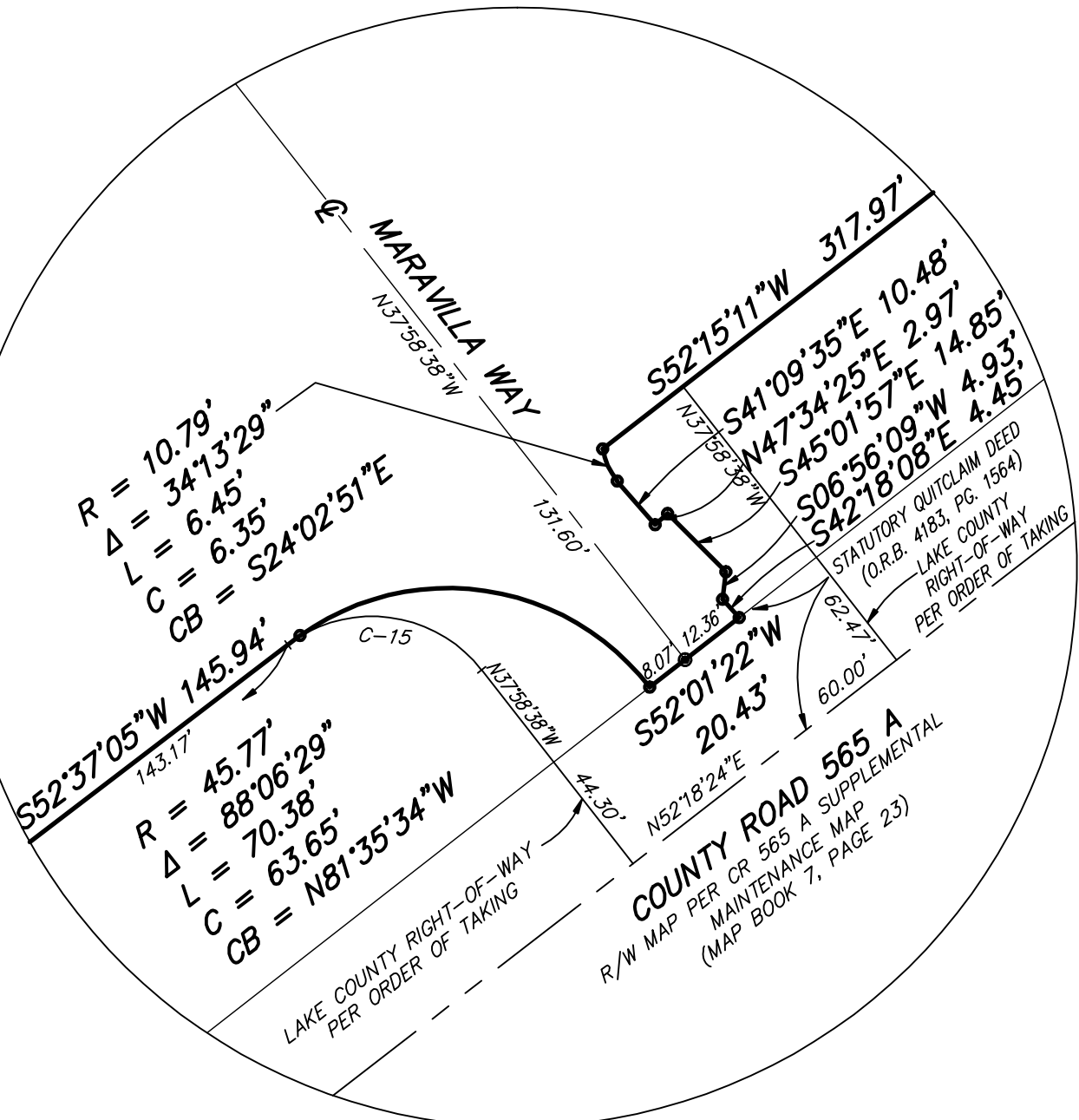


CYPRESS OAKS PHASE I A REPLAT

REPLATTING TRACTS 1, 2, 8, 9, 15 THROUGH 18, GROVELAND FARMS,
AS RECORDED IN PLAT BOOK 2, PAGES 10 AND 11
LOCATED IN SECTIONS 15 AND 16, TOWNSHIP 22 SOUTH, RANGE 25 EAST
CITY OF GROVELAND, LAKE COUNTY, FLORIDA



CURVE	RADIUS	DELTA	LENGTH	CHORD	CH. BEARING
C-1	250.00'	38°12'08"	166.69'	163.62'	S18°52'34"E
C-2	45.00'	89°56'05"	70.63'	63.60'	S44°44'32"E
C-3	45.00'	90°03'55"	70.74'	63.68'	S45°15'28"W
C-4	45.00'	90°03'55"	70.74'	63.68'	N45°15'28"E
C-5	280.00'	38°12'08"	186.69'	183.25'	S18°52'34"E
C-6	20.00'	89°56'05"	31.39'	28.27'	S44°44'32"E
C-7	70.00'	89°56'05"	109.88'	98.94'	S44°44'32"E
C-8	70.00'	90°03'55"	110.04'	99.05'	S45°15'28"W
C-9	20.00'	90°03'55"	31.44'	28.30'	S45°15'28"W
C-10	20.00'	89°56'05"	31.39'	28.27'	N44°44'32"W
C-11	20.00'	90°03'55"	31.44'	28.30'	S45°15'28"E
C-12	70.00'	90°03'55"	110.04'	99.05'	N45°15'28"E
C-13	20.00'	90°03'55"	31.44'	28.30'	N45°15'28"E
C-14	220.00'	38°12'08"	146.69'	143.98'	N18°52'34"W
C-15	25.00'	89°24'17"	39.01'	35.17'	N82°40'46"W
C-16	20.00'	90°03'55"	31.44'	28.30'	S45°15'28"W
C-17	20.00'	89°56'05"	31.39'	28.27'	N44°44'32"W
C-18	20.00'	90°03'55"	31.44'	28.30'	N45°15'28"E
C-19	20.00'	89°56'05"	31.39'	28.27'	S44°44'32"E
C-20	20.00'	90°03'55"	31.44'	28.30'	N45°15'28"E
C-21	20.00'	89°56'05"	31.39'	28.27'	S44°44'32"E
C-22	20.00'	90°03'55"	31.44'	28.30'	S45°15'28"W
C-23	20.00'	89°56'05"	31.39'	28.27'	N44°44'32"W
C-24	20.00'	90°03'55"	31.44'	28.30'	N45°15'28"E
C-25	20.00'	89°56'05"	31.39'	28.27'	S44°44'32"E
C-26	20.00'	90°03'55"	31.44'	28.30'	S45°15'28"W
C-27	20.00'	89°56'05"	31.39'	28.27'	N44°44'32"W
C-28	70.00'	60°22'10"	73.76'	70.39'	S59°31'29"E
C-29	70.00'	29°33'54"	36.12'	35.72'	S14°33'27"E
C-30	70.00'	16°38'05"	20.28'	20.21'	S08°31'53"W
C-31	70.00'	22°02'59"	28.90'	28.51'	S2°50'05"W
C-32	70.00'	12°18'26"	15.04'	15.01'	S45°41'06"W
C-33	70.00'	39°00'50"	47.66'	46.74'	S58°20'50"W
C-34	70.00'	12°26'20"	15.20'	15.17'	S84°04'15"W
C-35	70.00'	15°59'23"	19.54'	19.47'	N08°13'11"E
C-36	70.00'	74°04'33"	90.50'	84.33'	N53°15'09"E



ENTRANCE DETAIL
(SCALE 1" = 30')

NOTICE: THIS PLAT, AS RECORDED IN ITS GRAPHIC FORM, IS THE OFFICIAL DEPICTION OF THE SUBDIVIDED LANDS DESCRIBED HEREIN AND WILL IN NO CIRCUMSTANCES BE SUPPLANTED IN AUTHORITY BY ANY OTHER GRAPHIC OR DIGITAL FORM OF THE PLAT. THERE MAY BE ADDITIONAL RESTRICTIONS THAT ARE NOT RECORDED ON THIS PLAT THAT MAY BE FOUND IN THE PUBLIC RECORDS OF THIS COUNTY.