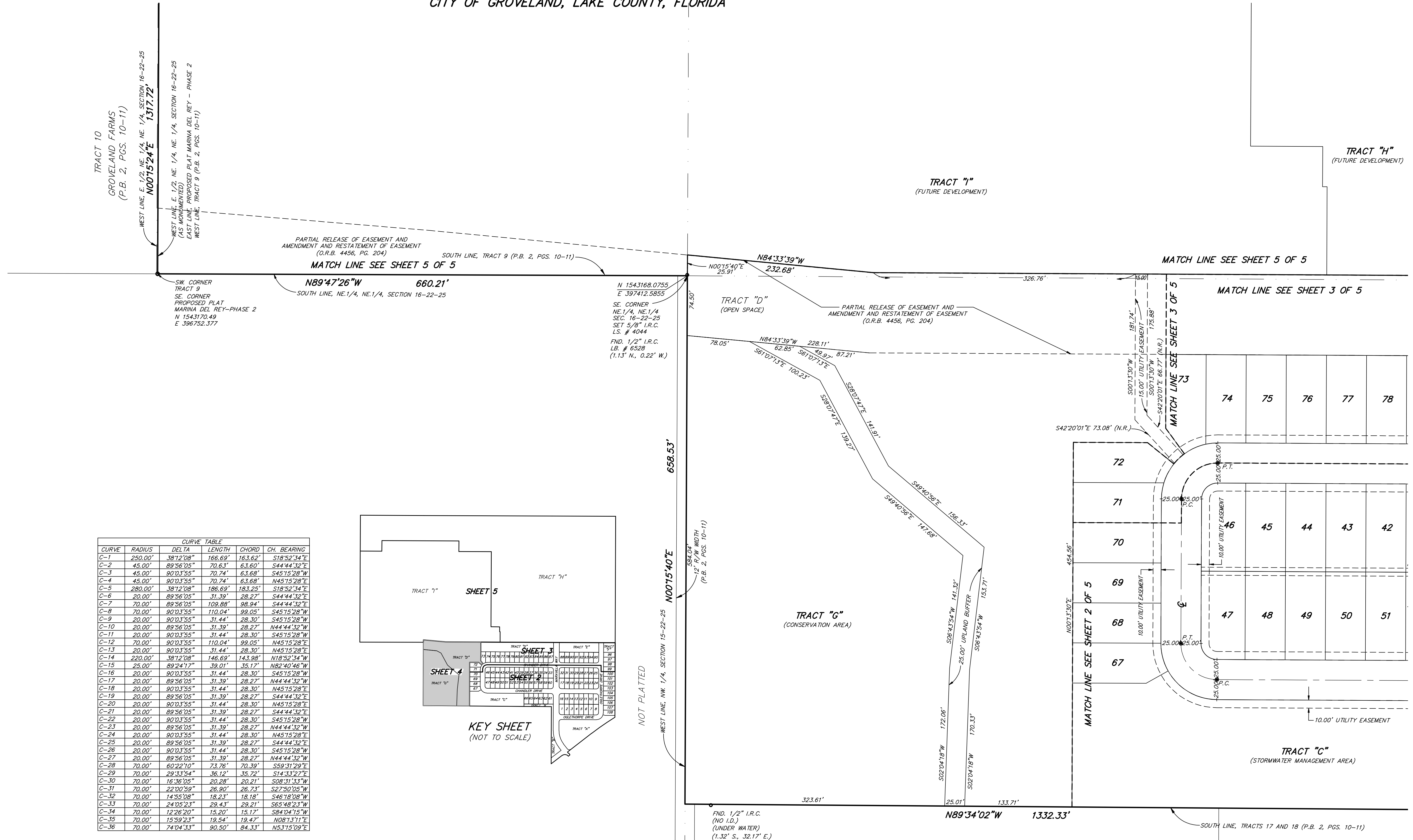


CYPRESS OAKS PHASE I A REPLAT

REPLATTING TRACTS 1, 2, 8, 9, 15 THROUGH 18, GROVELAND FARMS,
AS RECORDED IN PLAT BOOK 2, PAGES 10 AND 11
LOCATED IN SECTIONS 15 AND 16, TOWNSHIP 22 SOUTH, RANGE 25 EAST
CITY OF GROVELAND, LAKE COUNTY, FLORIDA



TRACT 10
GROVELAND FARMS
(P.B. 2, PGS. 10-11)
WEST LINE, E. 1/2, NE. 1/4, NE. 1/4, SECTION 16-22-25
N0075'24"E 1317.72'
WEST LINE, E. 1/2, NE. 1/4, NE. 1/4, SECTION 16-22-25
(AS MONUMENTED)
EAST LINE, PROPOSED PLAT MARINA DEL REY - PHASE 2
WEST LINE, TRACT 9 (P.B. 2, PGS. 10-11)

SW CORNER
TRACT 9
SE CORNER
PROPOSED PLAT
MARINA DEL REY-PHASE 2
N 1543170.49
E 396752.377

PARTIAL RELEASE OF EASEMENT AND
AMENDMENT AND RESTATEMENT OF EASEMENT
(O.R.B. 4456, PG. 204)
SOUTH LINE, TRACT 9 (P.B. 2, PGS. 10-11)
MATCH LINE SEE SHEET 5 OF 5

N 1543168.0755
E 397412.5855
SE CORNER
NE 1/4, NE 1/4,
SEC. 16-22-25
SET 5/8" I.R.C.
L.S. # 4044
FND. 1/2" I.R.C.
L.B. # 6528
(1.13' N., 0.22' W.)

584.04'
1/2" I.R.C. WIDTH
(P.B. 2, PGS. 10-11)

TRACT "G"
(CONSERVATION AREA)

MATCH LINE SEE SHEET 5 OF 5

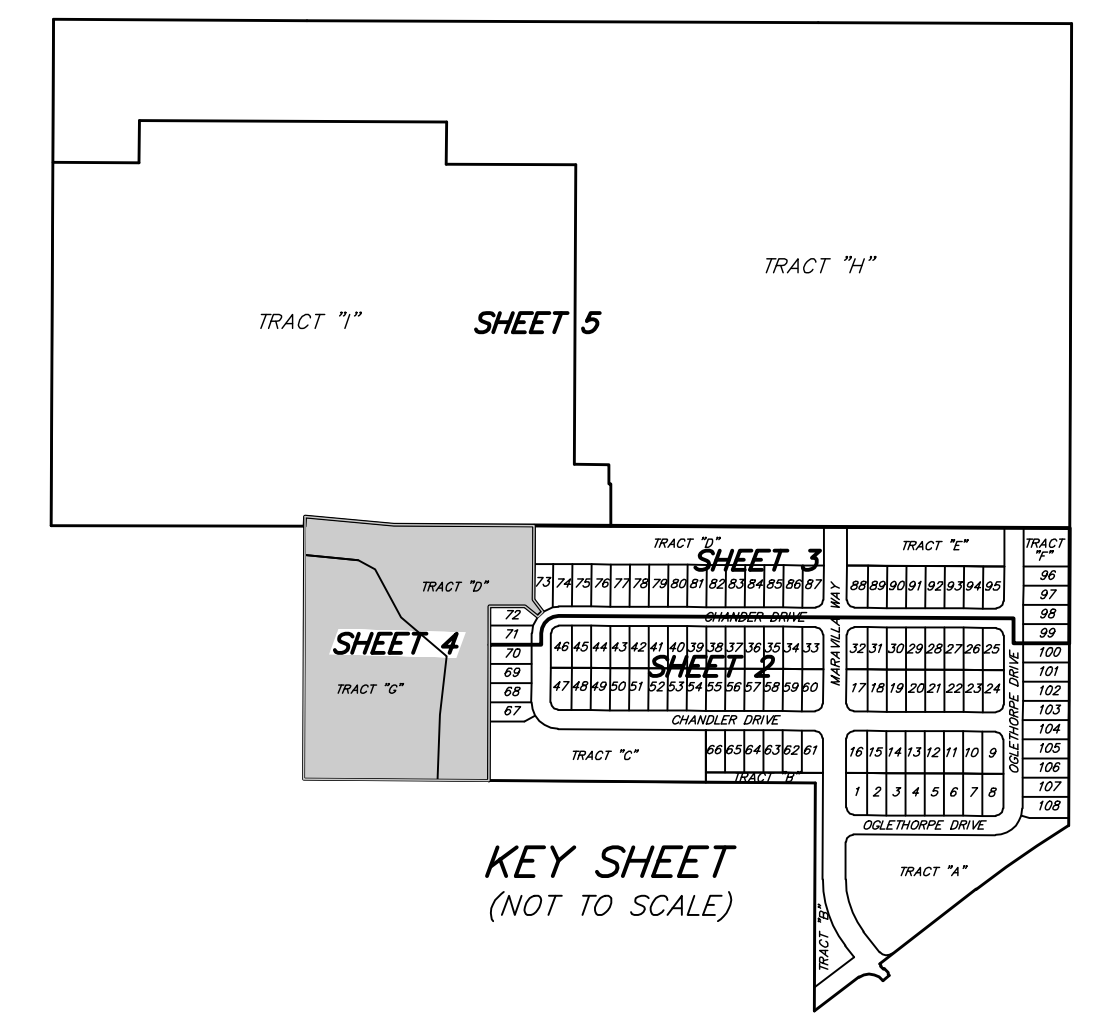
MATCH LINE SEE SHEET 3 OF 5

MATCH LINE SEE SHEET 3 OF 5

MATCH LINE SEE SHEET 2 OF 5

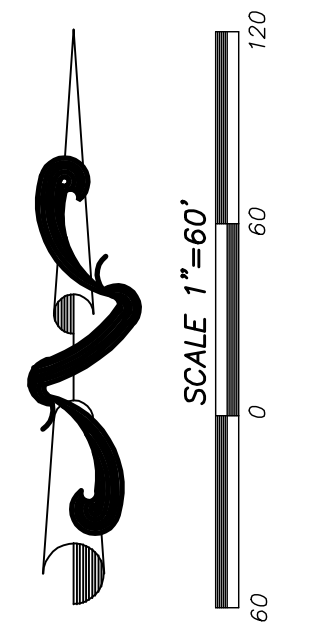
SOUTH LINE, TRACTS 17 AND 18 (P.B. 2, PGS. 10-11)

CURVE TABLE					
CURVE	RADIUS	DELTA	LENGTH	CHORD	CH. BEARING
C-1	250.00'	3872'08"	186.69'	163.62'	S18°52'34"E
C-2	45.00'	89°56'05"	70.63'	63.60'	S44°44'32"E
C-3	45.00'	90°03'55"	70.74'	63.68'	S45°15'28"W
C-4	45.00'	90°03'55"	70.74'	63.68'	N45°15'28"E
C-5	280.00'	3872'08"	186.69'	183.25'	S18°52'34"E
C-6	20.00'	89°56'05"	31.39'	28.27'	S44°44'32"E
C-7	70.00'	89°56'05"	109.88'	98.94'	S44°44'32"E
C-8	70.00'	90°03'55"	110.04'	99.05'	S45°15'28"W
C-9	20.00'	90°03'55"	31.44'	28.30'	S45°15'28"W
C-10	20.00'	89°56'05"	31.39'	28.27'	N44°44'32"W
C-11	20.00'	90°03'55"	31.44'	28.30'	S45°15'28"E
C-12	70.00'	90°03'55"	110.04'	99.05'	N45°15'28"E
C-13	20.00'	90°03'55"	31.44'	28.30'	N45°15'28"E
C-14	220.00'	3872'08"	146.69'	143.98'	N18°52'34"W
C-15	25.00'	89°24'17"	39.01'	35.17'	N82°40'46"W
C-16	20.00'	90°03'55"	31.44'	28.30'	S45°15'28"W
C-17	20.00'	89°56'05"	31.39'	28.27'	N44°44'32"W
C-18	20.00'	90°03'55"	31.44'	28.30'	N45°15'28"E
C-19	20.00'	89°56'05"	31.39'	28.27'	S44°44'32"E
C-20	20.00'	90°03'55"	31.44'	28.30'	N45°15'28"E
C-21	20.00'	89°56'05"	31.39'	28.27'	S44°44'32"E
C-22	20.00'	90°03'55"	31.44'	28.30'	S45°15'28"W
C-23	20.00'	89°56'05"	31.39'	28.27'	N44°44'32"W
C-24	20.00'	90°03'55"	31.44'	28.30'	N45°15'28"E
C-25	20.00'	89°56'05"	31.39'	28.27'	S44°44'32"E
C-26	20.00'	90°03'55"	31.44'	28.30'	S45°15'28"W
C-27	20.00'	89°56'05"	31.39'	28.27'	N44°44'32"W
C-28	70.00'	60°22'10"	73.76'	70.39'	S59°31'29"E
C-29	70.00'	29°33'54"	36.12'	35.72'	S14°33'27"E
C-30	70.00'	16°36'05"	20.28'	20.21'	S08°31'33"W
C-31	70.00'	22°00'59"	28.90'	26.73'	S27°50'05"W
C-32	70.00'	14°55'08"	18.33'	18.18'	S46°18'08"W
C-33	70.00'	24°05'23"	29.43'	29.21'	S65°48'23"W
C-34	70.00'	12°26'20"	15.20'	15.17'	S84°04'15"W
C-35	70.00'	15°58'23"	19.54'	19.47'	N08°13'11"E
C-36	70.00'	74°04'33"	90.50'	84.33'	N53°15'09"E



NOT PLATTED

FND. 1/2" I.R.C.
(NO I.D.)
(UNDER WATER)
(1.32' S., 32.17' E.)



NOTICE: THIS PLAT, AS RECORDED IN ITS GRAPHIC FORM, IS THE OFFICIAL
DEPICTION OF THE SUBDIVIDED LANDS DESCRIBED HEREIN AND WILL IN NO
C.I.R.C. CIRCUMSTANCES BE SUPPLANTED IN AUTHORITY BY ANY OTHER GRAPHIC
OR DIGITAL FORM OF THE PLAT. THERE MAY BE ADDITIONAL RESTRICTIONS
THAT ARE NOT RECORDED ON THIS PLAT THAT MAY BE FOUND IN THE
PUBLIC RECORDS OF THIS COUNTY.