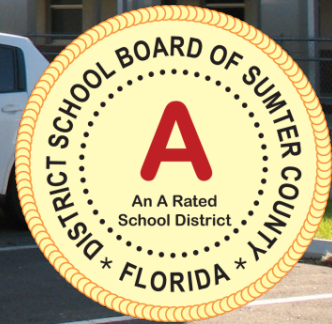


South Sumter Middle School Parent Responsibility Zones Webster, FL



November 2013

Purpose of Parent Responsibility Zone Study

Study Purpose:

- ✓ Review and summarize existing local, school and state policies regarding transportation and provision of sidewalk and bicycle facilities
- ✓ Make general recommendations for local jurisdictions regarding provision of sidewalks and bicycle facilities
- ✓ Make initial recommendations for designation of a parent responsibility zone (PRZ) for the school, within which it will be the responsibility of the parent to transport their child to school (walking, bicycling or by car) and busing will not be provided, this may include initial needed improvements to establish the PRZ
- ✓ Provide a series or tiered or priority recommendations for improvements that will increase the accessibility of the school by walking and bicycling, and which will allow for the expansion of the PRZ within the state defined two (2) mile walk zone



South Sumter Middle School PRZ

Florida Policy Findings:

- ✓ The state does not reimburse school districts for students transported within 2 miles of the school unless a “Hazardous Walking Condition” as defined by the state has been identified and proven. (Students meeting the criteria of Section 1011.68 FS are exempted from the 2 mile walk zone criteria).
- ✓ Florida statute also defines the reasonable walking distance to the bus stop as 1.5 miles.
- ✓ Florida Statute 1006.23 does not designate active railroads without pedestrian crossbars as “Hazardous Walking Conditions”.
- ✓ Florida Statute S. 339.175 assigns responsibility for the development of transportation master plans to a Metropolitan Planning Organization (MPO) “for the development and integrated management and operation of transportation systems and facilities, including pedestrian walkways and bicycle transportation facilities that will function as an intermodal transportation system for the metropolitan area”.

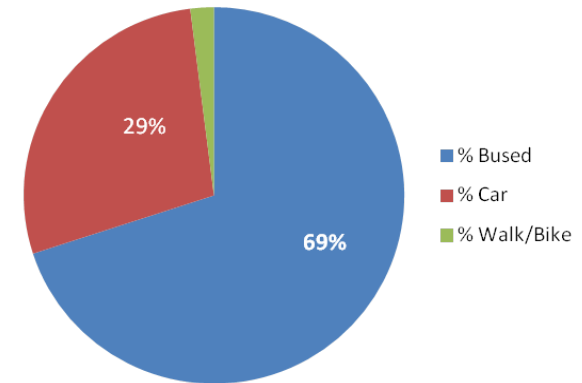


South Sumter Middle School PRZ

Sumter District Schools Findings:

- ✓ Sumter District Schools offers bus transportation to most students, including those living within 2-miles of the school.
- ✓ Sumter District Schools uses 61 buses with double runs to transport students. The rural character of Sumter County increases county-wide reliance on school bus transportation.
- ✓ The bus transportation budget is \$3.01 million for 2013/14 and includes transportation for 4,332 students. The cost of transportation for the 2013/14 school year, averages \$700 per student.
- ✓ The school district has recently worked to consolidate bus stops to reduce transportation costs. Parents and students have historically had door-to-door bus service.
- ✓ The Sumter County Traffic Safety Work Group assembled for the first time in January, 2012 and has been scheduled to meet quarterly.

Elementary Student
Transportation Breakdown
Sumter County, FL



Update for Middle Schools

South Sumter Middle School PRZ

Sumter District Schools General Recommendations:

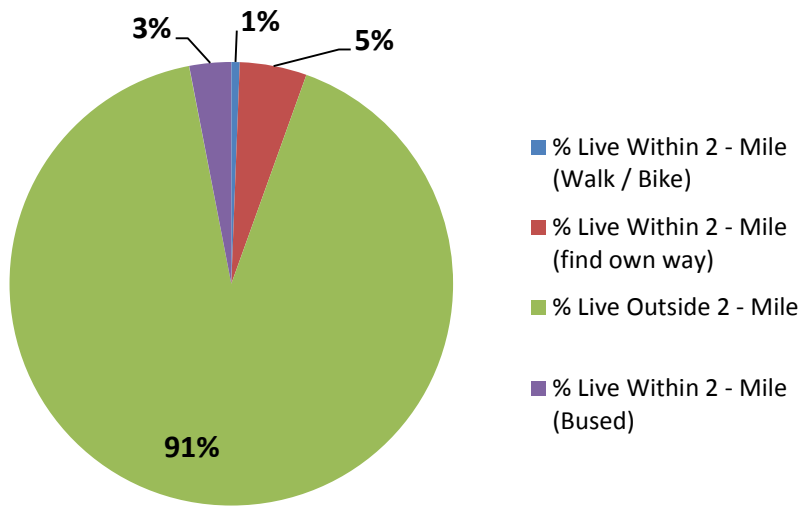
- ✓ Sumter District Schools may wish to consider partnering with the State of Florida, Sumter County and local municipalities to develop and maintain a crossing guard program. Further study and coordination is recommended to select crossing guard locations. Engineering studies, crossing improvements or new crosswalks may be required. Crossing guards should obtain training using the free training offered by the State of Florida (<http://www2.dot.state.fl.us/CrossingGuard/index.aspx>).
- ✓ Sumter District Schools may wish to participate in forming a sub-committee to the newly-formed Sumter County Traffic Safety Work Group to review SRTS projects, policy changes, to update hazardous conditions findings and to implement findings from this Study.
- ✓ Continue county-wide bus stop consolidation. Facilitate and encourage walking/bicycle riding to centrally located bus stop locations.
<http://www.nhtsa.gov/staticfiles/nti/buses/pdf/SelectingSchoolBusStopLocations.pdf>
- ✓ Coordinate with the LSMPO, Sumter County, the Withlacoochee Regional Planning Council, the State of Florida and the municipalities to meet SRTS grant requirements and to implement programs.
- ✓ Encourage walking and bicycling to school, including [Walking School Bus](#) or [Walk Safe](#) programs. Consider applying for grants for a Bike Rodeo and pedestrian safety education. Implement Walking School Bus Programs and Crossing Guard Programs simultaneously. (Note: UCF will soon take over the Walking School Bus Program for FDOT).

South Sumter Middle School PRZ

Sumter County and Municipalities Recommendations:

- ✓ Continue to work with the School District to consolidate bus stop locations. Provide adequate lighting, signage and pedestrian access for school bus stops. Include bicycle racks and shelter, if possible.
- ✓ Create a sub-committee to the LSMPO's Bicycle and Pedestrian Advisory Committee (BPAC) to review school safety, identify potential crossing guard locations, seek grant opportunities and apply for additional funding.
- ✓ Coordinate school-led efforts to incorporate walking and bicycling to school, including programs such as the Walking School Bus and bike and pedestrian safety programs. Consider partnering with the sheriff's office to pair police officers with walking school bus programs to create opportunities for increased physical activity, safety and community building.
- ✓ Consider implementing FDOT [Complete Street](#) policies

South Sumter Middle School Transportation Analysis



South Sumter Middle School

Grades: 6th- 8th

Total Students:	820
<ul style="list-style-type: none"> Provided Bus Transportation within the 2 mile walk zone : 	25
<ul style="list-style-type: none"> Walking / Biking 	5
<ul style="list-style-type: none"> Buses Assigned to School 	20

Students/Households within the "Walk Zones":

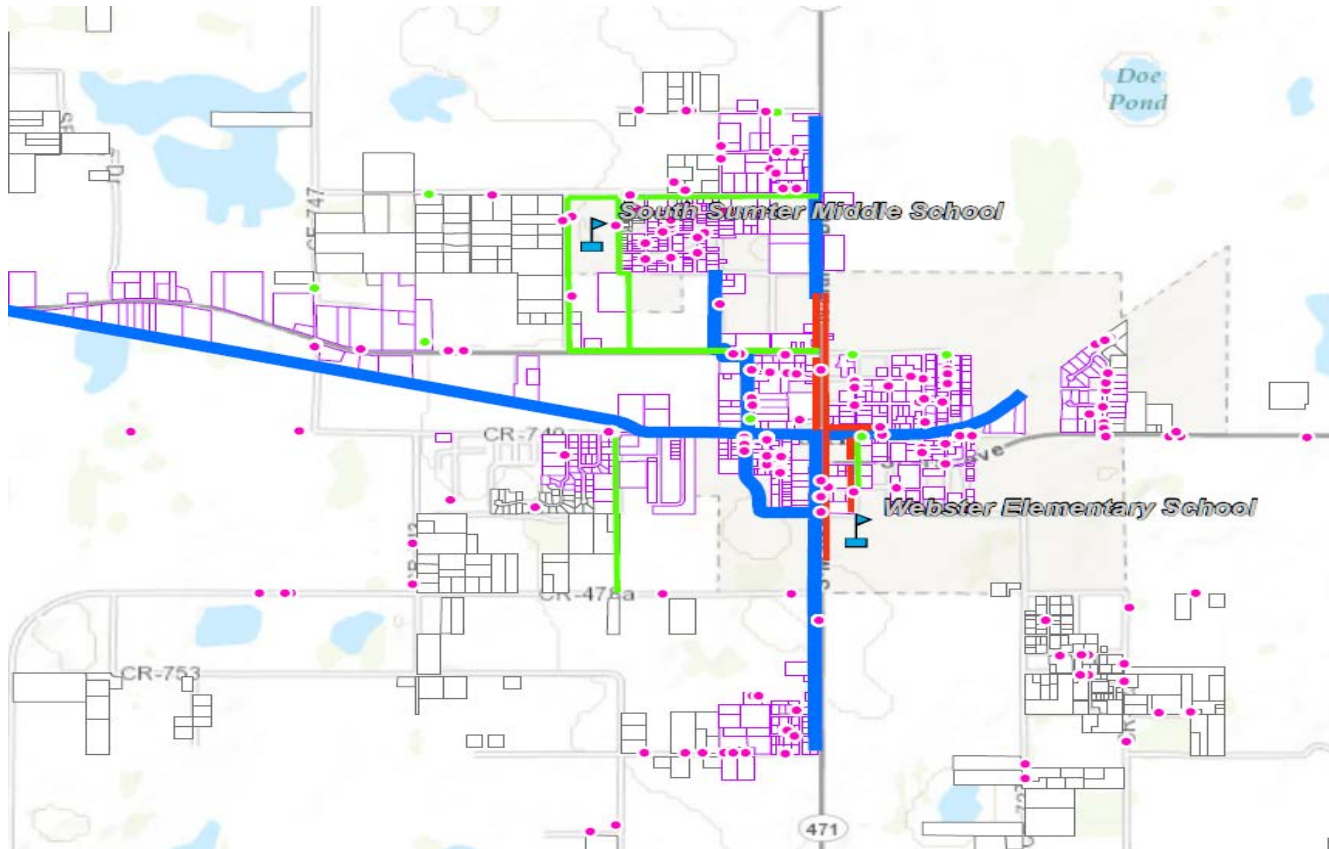
2 Mile State Defined Walk Zone	70/??
Recommended PRZ Tier 1:	xxx/??
Recommended PRZ Tier 2:	xxx/??
Recommended PRZ Tier 3:	xxx/??
Recommended PRZ Tier 4:	XXX



- ✓ South Sumter Middle School – Click [Here](#)
- ✓ Sumter County – Click [Here](#)

South Sumter Middle School PRZ

Need Updated Map from Doug with correct symbology and legend



Student Home and Bus Stop Locations and Existing / Proposed Sidewalks

Parent Responsibility Zone: Tier 1 Recommendations

Tier 1 Recommendations:

- ✓ Construct sidewalks at the following locations:
 - East side of CR 733 from N.W. 4th Avenue (CR 478) to N.W. 10th Avenue.
 - South side of N.W. 10th Avenue from CR 733 to CR 471
 - N.W. 7th Street from N.W. 6th Avenue to N.W. 10th Avenue (likely west side due to right of way constraints)
 - N.W. 6th Avenue from CR 733 to N. W. 3rd St
- ✓ Include school crossing signage and crosswalks at:
 - N.W. 10th Avenue at N.W. 7th Street
 - N.W. 7th Street at N. W. 6th Avenue
 - CR 729 at N.W. 10th Avenue
 - S.E. 28th Terrace at N.W. 10th Avenue
 - other cross streets, as appropriate

Households within the Tier 1 Zone:

- Households (potential student locations)
- 236

Need Updated Map from Doug

Parent Responsibility Zone 1 - RED

Parent Responsibility Zone: Tier 2 Recommendations

Findings:

- ✓ Beyond the proposed Tier 1 sidewalk on CR 733, there are no sidewalks providing north / south connectivity for students living south of either N.W. 6th Avenue or further N.W. 4th Avenue (CR 478)
- ✓ There are no sidewalks on either side of N.W. 4th Avenue within the Webster area.
- ✓ Webster Market events result in increased pedestrian activity along N.W. 4th Avenue and SR 471.
- ✓ The BP gas station at the southwest intersection of N.W. 4th Avenue and SR 471 acts as a magnet for pedestrians and bicyclists.
- ✓ There are no stop conditions along N.W. 4th Avenue west of SR 471 within the 2-mile radius study area.
- ✓ Posted speed limits along N.W. 4th Avenue (CR 478) range from 35 to 55 mph.



Parent Responsibility Zone: Tier 2 Recommendations

Tier 2 Recommendations cont.:

- ✓ Review the possibility to reduce the speed limit on N.W. 4th Avenue.



Need Updated Map from Doug

Households within the Tier 2 Zone:

- Households (potential student locations) - **236 (+??)**

Parent Responsibility Zone 2 - ORANGE

Parent Responsibility Zone: Tier 3 Recommendations

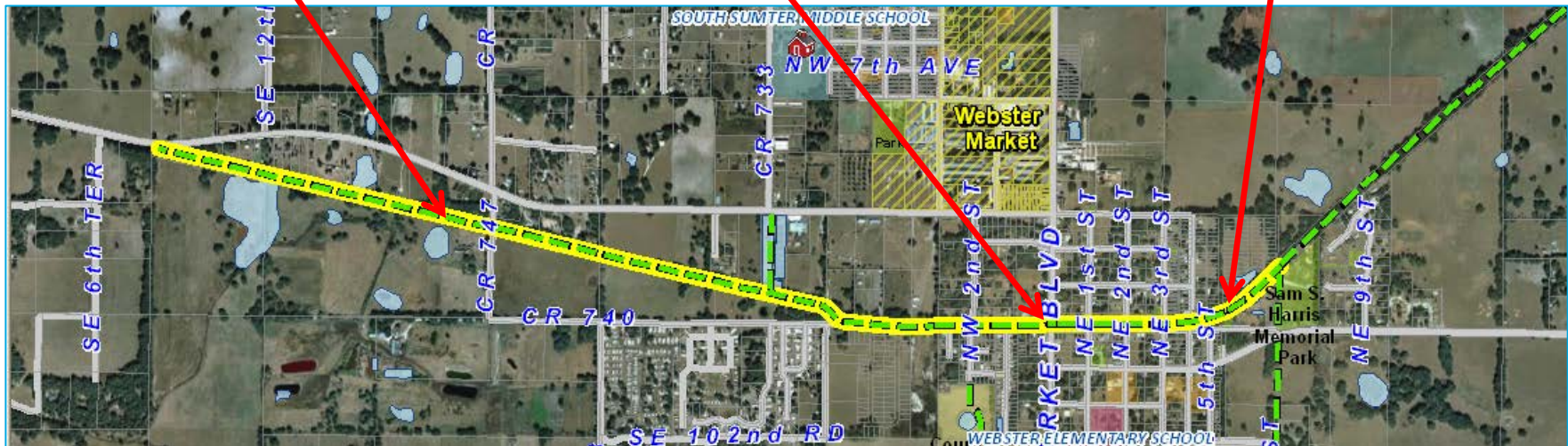
Findings:

- ✓ An abandoned rail corridor runs through the heart of Webster, crossing SR 471 near Central Avenue. The western section of this trail extends from the City of Brooksville to SR 471. The eastern section of this corridor extends from SR 471 to Center Hill and south to the James A. Van Fleet Trail.
- ✓ The development of this trail within the City of Webster would provide an east-west connector for students who walk or bicycle to and from Webster Elementary and South Sumter Middle Schools. Recommendations for the development of the Central Avenue Trail Corridor were divided into three segments for the safe access study report. The tiered PRZ recommendations include Segment 1 from CR 733 (with a spur along generally the CR 733 alignment to the sidewalk proposed with Tier 1), Segment 2 and Segment 3.

Segment 1: SR 471 west to CR 478/6th Terrace

Segment 2: Trail Crossing over SR 471

Segment 3: SR 471 east to Sam S. Harris



Findings:

- ✓ The railroad corridor right of way is fragmented west of SR 471 but the physical corridor appears to be intact.
- ✓ There are no east-west sidewalks along any roadways west of SR 471. Students choosing to walk or ride bicycles to and from school must share the roadway with vehicles.
- ✓ There are no crosswalks with stop conditions over SR 471 within a 2-mile radius of South Sumter Middle School. Heavy traffic and truck volumes make this an unsafe pedestrian condition.

Recommendations

- ✓ Purchase missing right of way and construct a multi-use trail from CR 733 to SR 471 using the abandoned rail corridor (from CR 478 and 6th Terrace to SR 471 is preferred).
- ✓ Purchase / Acquire right of way to provide a trail connection from the proposed Central Avenue Trail to N.W. 4th Avenue, to align with CR 733, connecting to the Middle School.
- ✓ Include a pedestrian crossing with crossing arms, a pedestrian signal or rapid rectangular flashing beacons at N.W. 4th Avenue (CR 478)
- ✓ The proposed Central Avenue Trail location on the west side of SR471 could also serve as a bus stop location for middle school students until a safe crossing over SR 471 is provided. Bus stop locations should be well lighted and provide a shelter for waiting students.



SR 471 Crossing Findings:

- ✓ There are no crossings over SR 471 that include a stop condition (signal or stop sign) between East C-48 and SR 50. The City of Webster is located in the middle of this 6.5-mile span. There is an unstaffed crosswalk over SR 471 in front of Webster Elementary School. No students were observed using this crosswalk. The crosswalk is not connected with sidewalks on the west side of SR 471.
- ✓ Webster Elementary School and South Sumter Middle School are located on opposite sides of SR 471. Students who wish to ride bicycles or walk to and from school will need to cross SR 471 during their elementary school years or middle school years.
- ✓ SR 471 is a heavily-traveled road, especially during “Market Mondays” from October through March. Pedestrians frequently cross the roadway during event days.
- ✓ The Welcome Sign for Webster is located at the intersection of Central Avenue and SR 471.



SR 471 Crossing Recommendations:

- ✓ Review the possibility of providing a crossing over SR 471 at the location of the abandoned rail corridor along Central Avenue. This crossing point is located mid-way between Webster Elementary and South Sumter Middle Schools. Follow [Traffic Engineering Manual](#) guidelines.
- ✓ If no stop condition is provided and courtesy transportation is removed, elementary-age students will require the assistance of a permanent crossing guard.
- ✓ Consider implementing traffic calming measures to reduce traffic speeds and increase safety for pedestrians and bicyclists (See Priority Project #3 at the end of this report).



Findings

- ✓ An abandoned rail corridor runs along the median of Central Avenue from SR 471 to N.E. 2nd Street and then continues east to Center Hill.
- ✓ The small historic downtown is located along Central Avenue east of SR 471. Most of the store fronts are empty and the downtown buildings are underutilized. There is pull-in parking along the north side of Central Avenue from SR 471 to S.E. 1st Street.
- ✓ The library, police station and cultural destinations are located nearby on the south side of Central Avenue.
- ✓ The trail corridor runs through the neighborhood to the north of Webster Elementary School and connects to the northern end of Sam S. Harris Memorial Park. A narrow trail exists along the west side of the park.
- ✓ The Webster Market is less than one-quarter of a mile away.



Central Avenue looking east



Central Avenue looking west

Recommendations:

- ✓ Construct a .66 mile long multi-use trail along Central Avenue that incorporates the downtown as a trailhead facility. Encourage downtown infill with building facades that align with the existing historic structures.
- ✓ Connect to the north end of Sam S. Harris Memorial Park using the existing trail. Expand and improve the trail when funding becomes available. Consider applying for a Florida Recreation Development Assistance Program Grant.
- ✓ This location could also serve as a bus stop for middle school students until a safe crossing over SR 471 is provided. Bus stop locations should be well lighted and provide a shelter for waiting students.



Central Avenue looking west



Existing Park trail

Parent Responsibility Zone: Tier 3 Recommendations

Tier 3 Recommendations:

- ✓ Construct the Central Avenue Trail from CR 733 (including spur connecting to CR 733) to Sam S. Harris Memorial Park

Need Updated Map from Doug

Households within the Tier 3 Zone:

- Households (potential student locations) - 236 (+??)

Parent Responsibility Zone 3 - YELLOW

Parent Responsibility Zone: Tier 4 Recommendations

Tier 4 Findings:

- ✓ There are no designated crossings over SR 471 that include a stop condition or crossing guard.
- ✓ The County owns and the City uses and maintains recreational fields on the west side of SR 471 across from Webster Elementary School. Future plans include the development of a library and fire station.

Tier 4 Recommendations

- ✓ Option 1 – Connect the proposed sidewalk on the west side of N.W. 2nd Street to the proposed Central Avenue Trail, heading east and crossing SR 471, terminating at the existing sidewalk on the west side of S.E. 1st Street. If funding allows, construct a sidewalk along the east side of S.E. 1st Street to connect to the Webster Elementary School bus loading area.
- ✓ Option 2 - Continue the sidewalk/trail along the west side of S.W. 2nd Street from the proposed Central Avenue Trail through the planned library and fire station site to the existing crosswalk in front of Webster Elementary school on SR 471. Provide a crossing guard for students crossing SR 471 if there is no controlled stop condition.

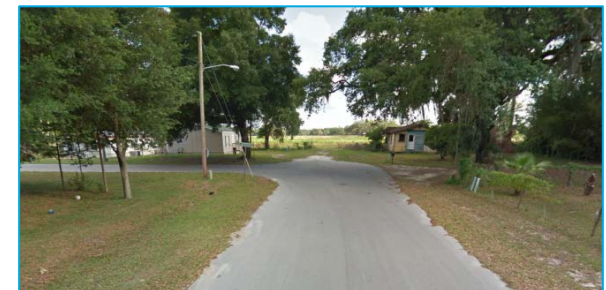
Note: See option diagrams on the next page.



W. Central Avenue looking east (Option 1)

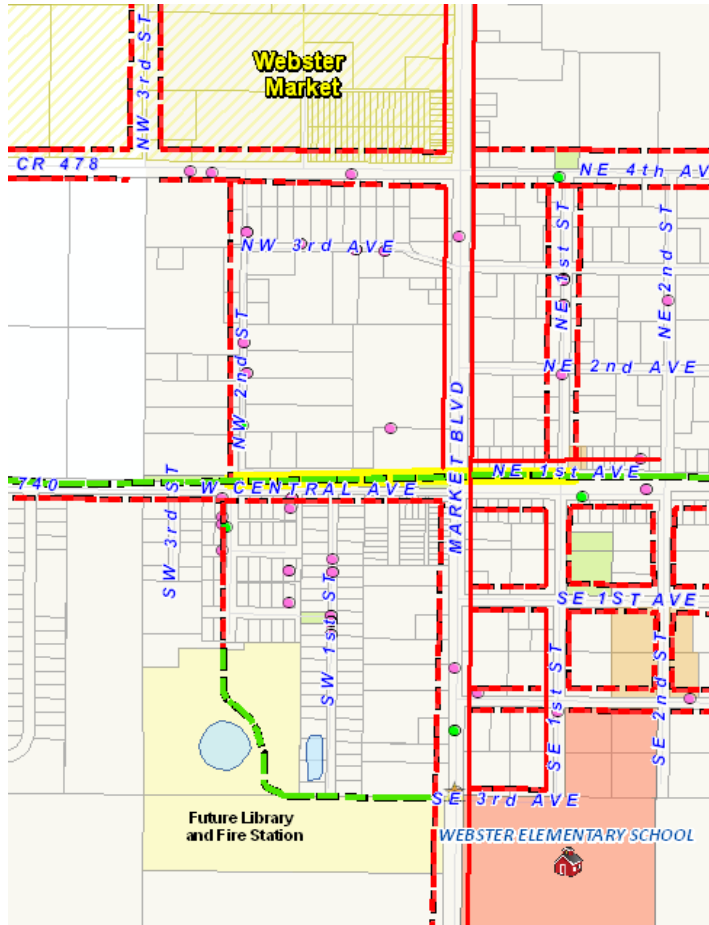


E. Central Avenue looking east (Option 1)

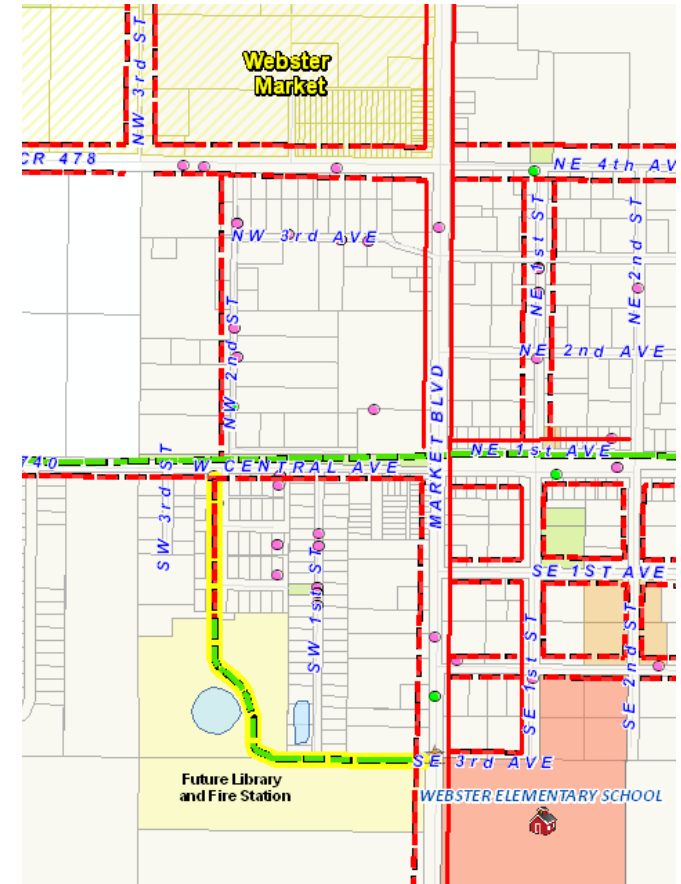


S.W. 2nd Street looking south (Option 2)

South Sumter Middle School



Option 1



Option 2

Parent Responsibility Zone: Tier 4 Recommendations

Tier 4 Recommendations:

- ✓ Construct sidewalk alignment option 1 or 2 connecting to the proposed Tier 2 sidewalk terminating at Central Avenue to SR 471 and Webster Elementary School.

Need Updated Map from Doug

Households within the Tier 3 Zone:

- Households (potential student locations) - 236 (+??)

Parent Responsibility Zone 4 - GREEN

South Sumter Middle School PRZ

Tier Number	Roadway	Location	Project
1	CR 733	East side	Construct sidewalk on the east side of CR 733 from N.W. 10 th Avenue
	N.W. 10 th Avenue	South side	Construct sidewalk on the south side of N.W. 10 th Avenue from CR 733 to CR 471
	N.W. 7 th Street		Construct sidewalk on N.W. 7 th Street from N.W. 6 th Avenue to N.W. 10 th Avenue
	N.W. 6 th Avenue		Construct sidewalk on N.W. 6 th Avenue from CR 733 to N.W. 3 rd Street
	N.W. 10 th Avenue		Install school crossing signage and crosswalks on N.W. 10 th Avenue at N.W. 7 th Street
	N.W. 7 th Street		Install school crossing signage and crosswalks on N.W. 7 th Street at N.W. 6 th Avenue
	CR 729		Install school crossing signage and crosswalks on CR 729 at N.W. 10 th Avenue
	S.E. 28 th Terrace		Install school crossing signage and crosswalks on S.E. 28 th Terrace at N.W. 10 th Avenue

South Sumter Middle School PRZ

Tier Number	Roadway	Location	Project
2	N.W. 3 rd Street	West side	Construct sidewalk on the west side of N.W. 3 rd Street from the from the proposed sidewalks in the Johnson neighborhood to N.W. 4 th Avenue
	N.W. 3 rd Street	East side	Provide a crosswalk to the east side of N.W. 3 rd Street on the north side of N.W. 4 th Avenue
	N.W. 4 th Avenue	South side	Construct sidewalk on the south side of N.W. 4 th Avenue from N.W. 3 rd Street to N.W. 2 nd Street
	N.W. 2 nd Street	West side	Construct sidewalk on the west side of N.W. 2 nd Street from N.W. 4 th Avenue to Central Avenue and the proposed Central Avenue Trail
	N.W. 4 th Avenue and N.W. 3 rd Street intersection		Review the possibility of providing a 3-way stop condition at the N.W. 4 th Avenue and N.W. 3 rd Street intersection and provide a crosswalk over N.W. 4 th Avenue that aligns with the east side of N.W. 3 rd Street
	N.W. 4 th Avenue		Review the possibility to reduce the speed limit on N.W. 4 th Avenue
3			Purchase missing right of way and construct a multi-use trail from CR 733 to SR 471 using the abandoned rail corridor

South Sumter Middle School PRZ

Tier Number	Roadway	Location	Project
3	Central Avenue Trail		Purchase / acquire right of way to provide a trail connection from the proposed Central Avenue Trail to N.W. 4 th Avenue, to align with CR 733, connecting to the Middle School
	N.W. 4 th Avenue (CR 478)		Include a pedestrian crossing with crossing arms, a pedestrian signal or rapid rectangular flashing beacons at N.W. 4 th Avenue (CR 478)
	Central Avenue Trail	West side of SR471	The proposed Central Avenue Trail location on the west side of SR471 could also serve as a bus stop location for middle school students until a safe crossing over SR 471 is provided. Bus stop locations should be well lighted and provide a shelter for waiting students
	SR 471	Abandoned rail corridor along Central Avenue	Review the possibility of providing a crossing over SR 471 at the location of the abandoned rail corridor along Central Avenue
	Central Avenue Trail		Implementing traffic calming measures to reduce traffic speeds and increase safety for pedestrians and bicyclists at the Central Avenue Trail crossing over SR 471

South Sumter Middle School PRZ

Tier Number	Roadway	Location	Project
3	Central Avenue		Construct a .66 mile long multi-use trail along Central Avenue that incorporates the downtown as a trailhead facility. Encourage downtown infill with building facades that align with the existing historic structures
	Central Avenue Trail		Connect to the north end of Sam S. Harris Memorial Park using the existing trail. Expand and improve the trail when funding becomes available. Consider applying for a Florida Recreation Development Assistance Program Grant
	Central Avenue Trail	SR 471 east to Sam S. Harris Memorial Park	Segment 3 of the Central Avenue Trail could serve as a bus stop for middle school students until a safe crossing over SR 471 is provided. Bus stop locations should be well lighted and provide a shelter for waiting students
4	Central Avenue	Market Boulevard	Construct sidewalk alignment near Central Avenue / Market Boulevard intersection



This document represents an ongoing commitment to increase safe access to schools within the Lake~Sumter Metropolitan Planning Organization Planning Area.

Updates to data, and suggestions for programming and project ideas are welcome from all agencies and the general public.

Mike Woods

Project Manager, Transportation Planner
(352) 315-0170
mwoods@lakesumtermpo.com



Doug Lynch, GISP

Consultant Project Manager
(407) 875-8938
dwlynch@transystems.com



Mindy Heath, AICP

PRZ Task Manager
(407) 420-4200
mindy.heath@hdrinc.com

*Promoting Regional
Transportation Partnerships*