



# SafeAccess

A SAFE SCHOOLS TRANSPORTATION STUDY

## Cypress Ridge Elementary

### School Clermont, FL

# DRAFT



## CYPRESS RIDGE ELEMENTARY

DEC 7 & 8 PAPA JOHN'S  
10 HOLIDAY SHOP NOON  
15 FMLY WALK 4:30  
CHECK-OUT NIGHT

April 2012







A SAFE SCHOOLS TRANSPORTATION STUDY

## Cypress Ridge Elementary School

# Cypress Ridge Elementary School Snapshot



December 7, 2011

Grades: Pre-Kindergarten – 5<sup>th</sup>

Total Students: 595

- Provided Bus Transportation : 6
- Not Provided Bus Transportation: 589

Students Living within the “Walk Zone”: 102

- Provided Bus Transportation: 1
- Not Provided Bus Transportation: 101

Observation Day (Partly Cloudy)

- Walkers: 9
- Bike Riders: 0

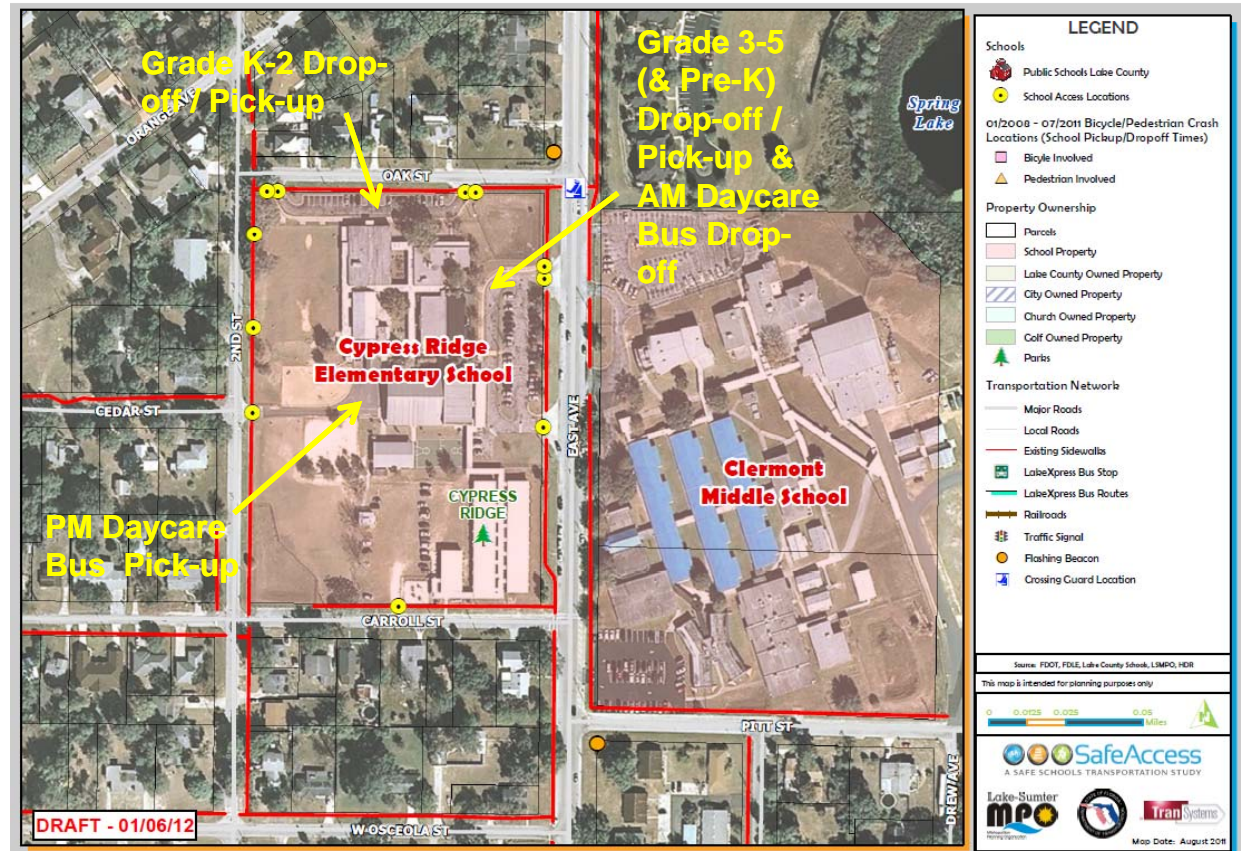


- ✓ Cypress Ridge Elementary School website – Click [here](#)
- ✓ City of Clermont website – Click [here](#)
- ✓ Lake County Schools website – Click [here](#)

## Findings:

- ✓ CRES is a magnet school (math/science/technology/social science)
- ✓ No busing except ESE students
- ✓ Most parents drive their students to school
- ✓ Two drop-off/pick-up loops
- ✓ One-way traffic flow (NB) on 2nd St between Orange Ave and Carroll St during arrival/dismissal
- ✓ Oak St blocked to traffic to/from East Ave during arrival/dismissal
- ✓ Bike/walk access via the front of the school (East Ave)
- ✓ Crossing guard located at East Ave/Oak St

Cypress Ridge Elementary School: Student Access Location Map







# Arrival and Dismissal Schedule

- 7:00-7:50 am:** ELC program & breakfast begins (typically about 20 students)
- 7:30-8:30 am:** Crossing guard on duty
- 7:50-8:10 am:** Gates open for drop-off
- 8:15 am:** School begins
- 2:45 pm:** School dismissal
- 2:45-3:20 pm:** Typical student pick-up period
- 2:45-6:00 pm:** ELC after school program (60-90 students)

*Note: Students are released one hour early on Wednesdays*







**SafeAccess**

A SAFE SCHOOLS TRANSPORTATION STUDY

**Cypress Ridge Elementary School**

**Bus Access**



## Findings:

- ✓ No regular bus service provided. Daycare buses drop off students in the front of the school (via East Ave) in the morning and pick up in the back of the school (via 2nd St) in the afternoon
- ✓ Drivers in the afternoon vehicle queue on 2nd Street were generally courteous and left an opening for daycare bus access

## Findings:

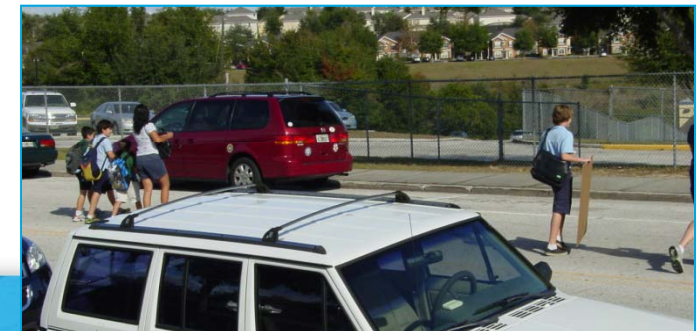
- ✓ Drop-off / pick-up for grades K-2 is from Oak St
- ✓ No traffic is permitted to use Oak St from East Ave during arrival/dismissal time - a barricade is used to prohibit this movement and direct outbound traffic back to 2<sup>nd</sup> St
- ✓ Signage is also used to create one-way northbound flow on 2<sup>nd</sup> St between Carroll St and Orange Ave during arrival/dismissal time
- ✓ The existing campus layout limits car capacity and motorists encroach into 2nd Avenue; maximum observed PM queue was approximately 40 vehicles





## Findings:

- ✓ Drop-off / pick-up for grades 3-5 & Pre-K is from East Ave
- ✓ 5 gates used plus crosswalk used for drop-off/pick-up; use microphone to call students to cars in PM
- ✓ Vehicles queue onto East Ave during both AM & PM periods; max observed queue on East Ave stretched nearly to the median island just south of Grand Hwy
- ✓ All queuing in PM was in southbound direction; no northbound left turn queue
- ✓ Parents are not permitted to park on-site to drop off or pick up students; as a result, some parents drop-off / pick-up on East Ave or park on East Ave and walk up to the school







A SAFE SCHOOLS TRANSPORTATION STUDY

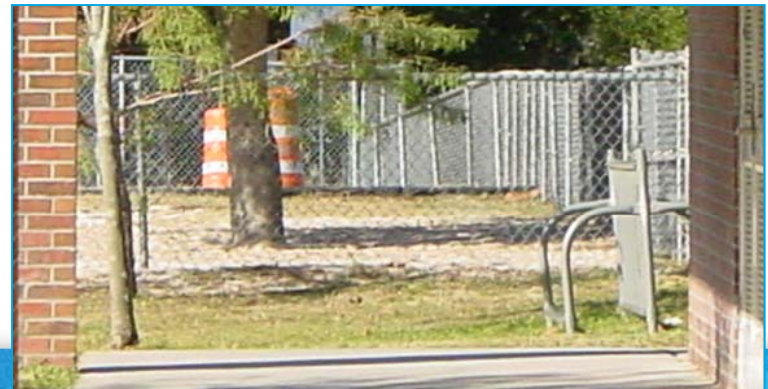
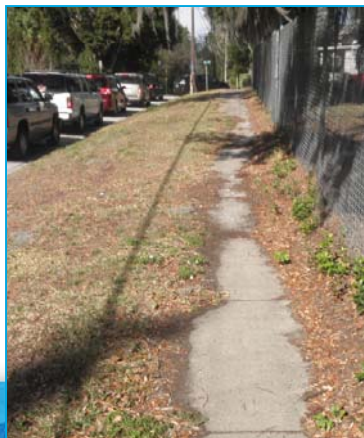
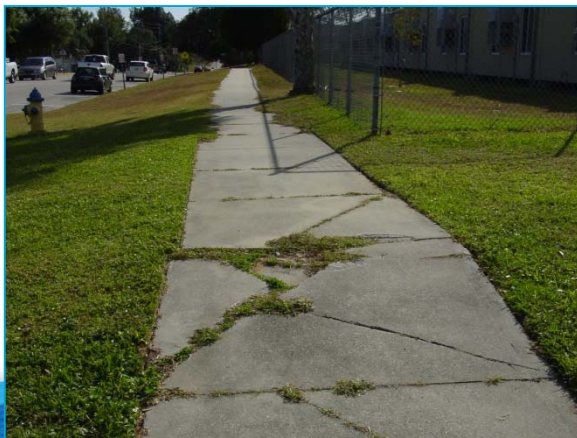
Cypress Ridge Elementary School

# Bike/Walk Access



## Findings:

- ✓ Less than 10 walkers & generally no bicyclists; not many students within reasonable walking/bicycling distance
- ✓ Bike / walk access via front of school
- ✓ One crossing guard located at East Ave & Oak St
- ✓ Sections of sidewalk on East Ave & 2<sup>nd</sup> St in poor condition
- ✓ One bike rack is provided in the back of the school – location is not very visible, but is secure; rack type is “wheel bender”
- ✓ School does provide a bicycle / pedestrian safety program (run by the gym teacher)





## Findings:

- ✓ The City of Clermont has recently installed several new sidewalks in the vicinity of the school, including sidewalks on School St, Juniata St, & Scott St & Prince Edward Ave between Desoto St and Pitt St
- ✓ The City has a planned project in 2012 to reconstruct East Ave from SR 50 to Lake Minneola, which presents an opportunity to look at pedestrian, bicyclist, parking, and turning traffic needs in this corridor
- ✓ The City has a similar planned project in 2013 or 2014 to reconstruct Pitt St from East Ave to Grand Hwy with potential to consider pedestrian, bicycle, and turning traffic needs

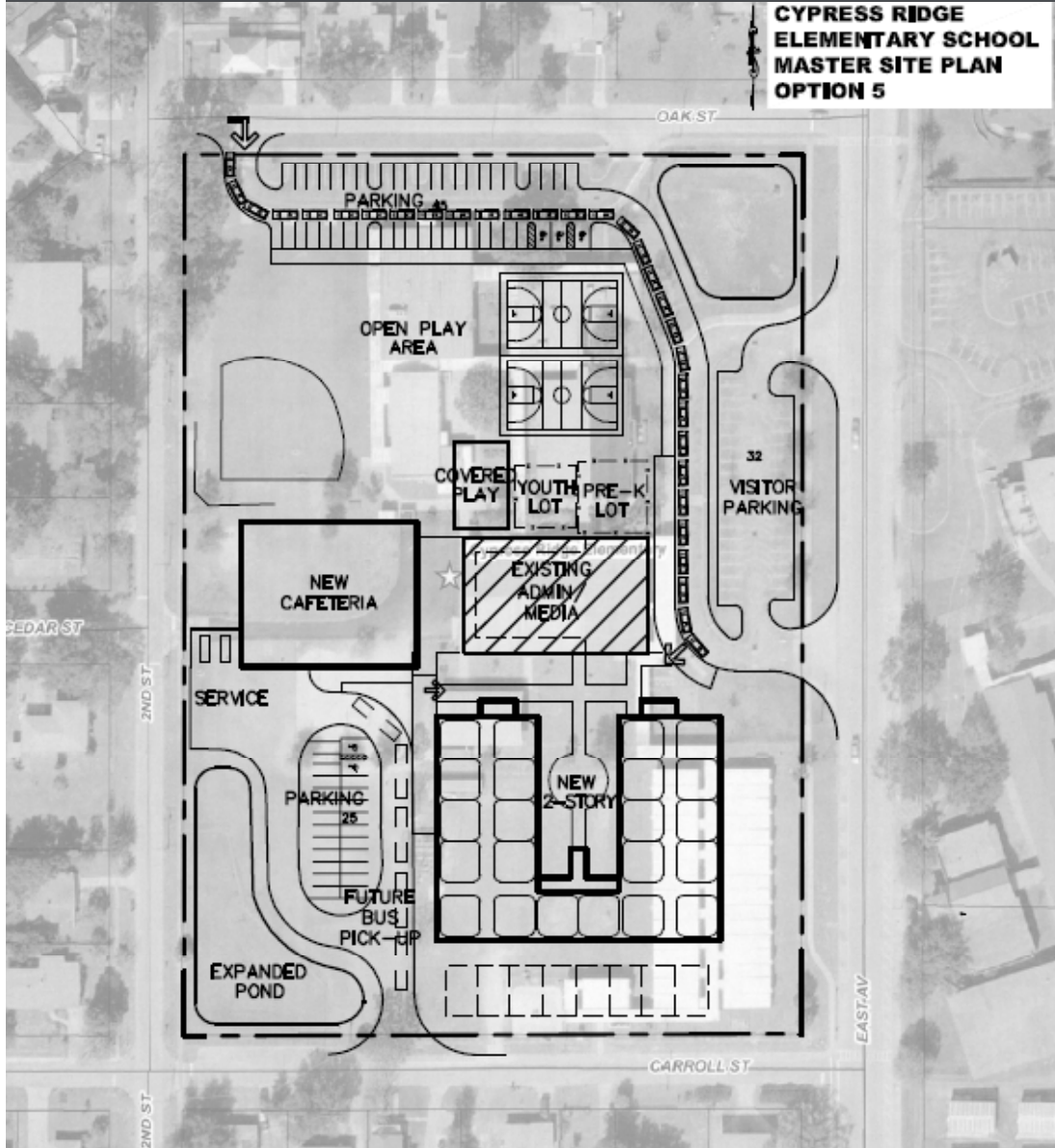
## Recommendations:

- ✓ Coordinate with the City on the planned maintenance/ improvement of these roadways to included needed projects – evaluate turn lanes, on-street parking, curb extensions, etc.





**CYPRESS RIDGE  
ELEMENTARY SCHOOL  
MASTER SITE PLAN  
OPTION 5**



## Findings:

- ✓ Combines the two existing drop-off/pick-up loops into one on-site circulation loop
- ✓ Suggests a clockwise queuing/staging traffic flow pattern around the school on Oak St, 2<sup>nd</sup> St, and potentially Carroll St
- ✓ Secondary pick up could be used for future bus loop
- ✓ Concept does not show pedestrian access; pedestrians coming from the north & east would be required to cross the car line – could potentially be accommodated via a raised speed table



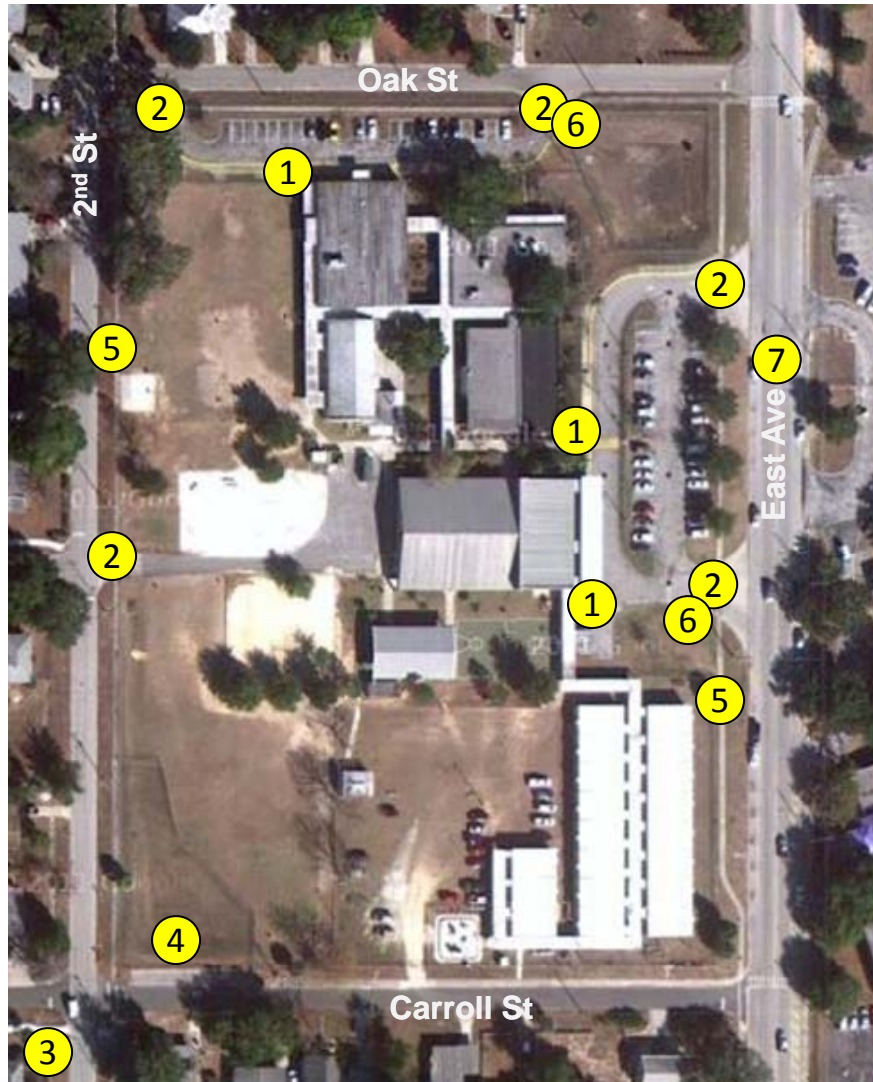


**SafeAccess**

A SAFE SCHOOLS TRANSPORTATION STUDY

**Cypress Ridge Elementary School**

# Recommended Priority Projects



1. School accessibility improvements
2. Mark crosswalks at all school driveways
3. Mark crosswalks at 2<sup>nd</sup> St/Carroll St intersection
4. Connect sidewalk on Carroll St
5. Sidewalk repair/maintenance
6. Replace/update signage at parent drop-off / pick-up exits
7. Restripe East Ave – add turn lanes & modify parking





A SAFE SCHOOLS TRANSPORTATION STUDY

## Cypress Ridge Elementary School

# Priority Project #1

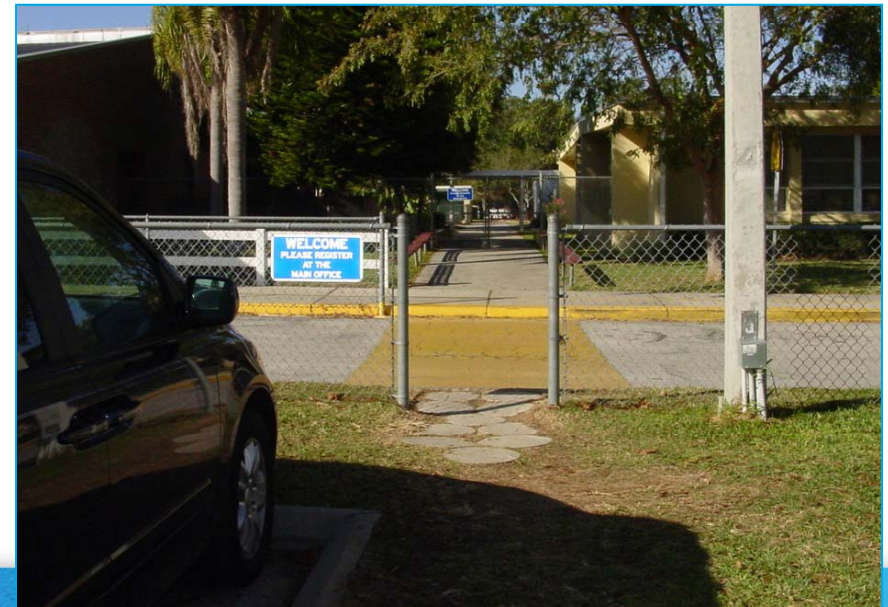
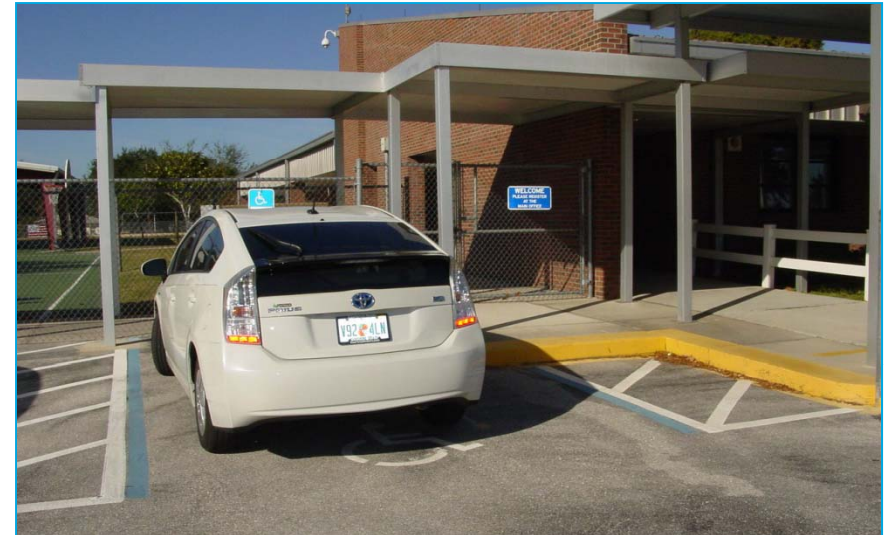
## School Accessibility Improvements

### Findings:

- ✓ Only one handicap parking space provided, and it has no accessibility to the curb (existing accessible ramp is fenced off)
- ✓ No curb ramps or accessible access point provided at either of the parent drop-off / pick-up loops

### Recommendations:

- ✓ Make changes to bring site up to ADA compliance







A SAFE SCHOOLS TRANSPORTATION STUDY

Cypress Ridge Elementary School

# Priority Project #2

## Mark Crosswalks at all School Driveways

### Findings:

- ✓ There are no marked crosswalks across any of the school driveways on East Ave or Oak St
- ✓ Although in most cases, students would not be crossing the driveways when entering or exiting the school, pedestrians should be acknowledged as having the right-of-way at the driveways

### Recommendations:

- ✓ Mark crosswalks across all school driveways using high visibility ladder-style markings







A SAFE SCHOOLS TRANSPORTATION STUDY

Cypress Ridge Elementary School

# Priority Project #3

## Mark Crosswalks at 2<sup>nd</sup> St/Carroll St Intersection

### Findings:

- ✓ No crosswalk provided across south leg of intersection
- ✓ Low visibility transverse lines mark crosswalk across east leg of intersection

### Recommendations:

- ✓ Stripe both crosswalks with high visibility ladder-style markings







A SAFE SCHOOLS TRANSPORTATION STUDY

Cypress Ridge Elementary School

# Priority Project #4

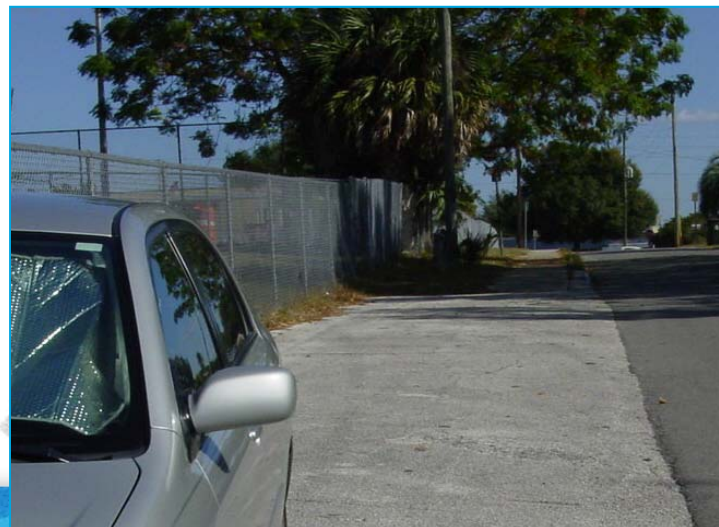
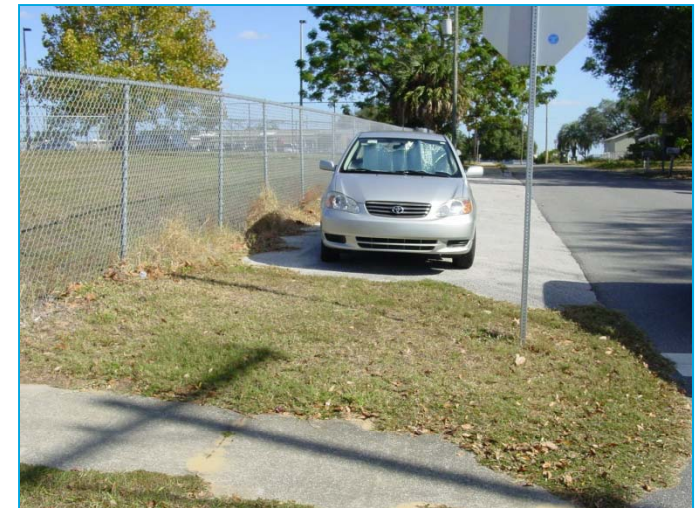
## Connect Sidewalk on Carroll St

### Findings:

- ✓ Existing sidewalk on north side of Carroll St is interrupted just east of 2<sup>nd</sup> St by a section used for on-street parking
- ✓ It is unclear if this parking was intended to serve a particular function, but it appears out of place

### Recommendations:

- ✓ Remove short on-street parking area and replace with sidewalk and landscape buffer







A SAFE SCHOOLS TRANSPORTATION STUDY

Cypress Ridge Elementary School

# Priority Project #5

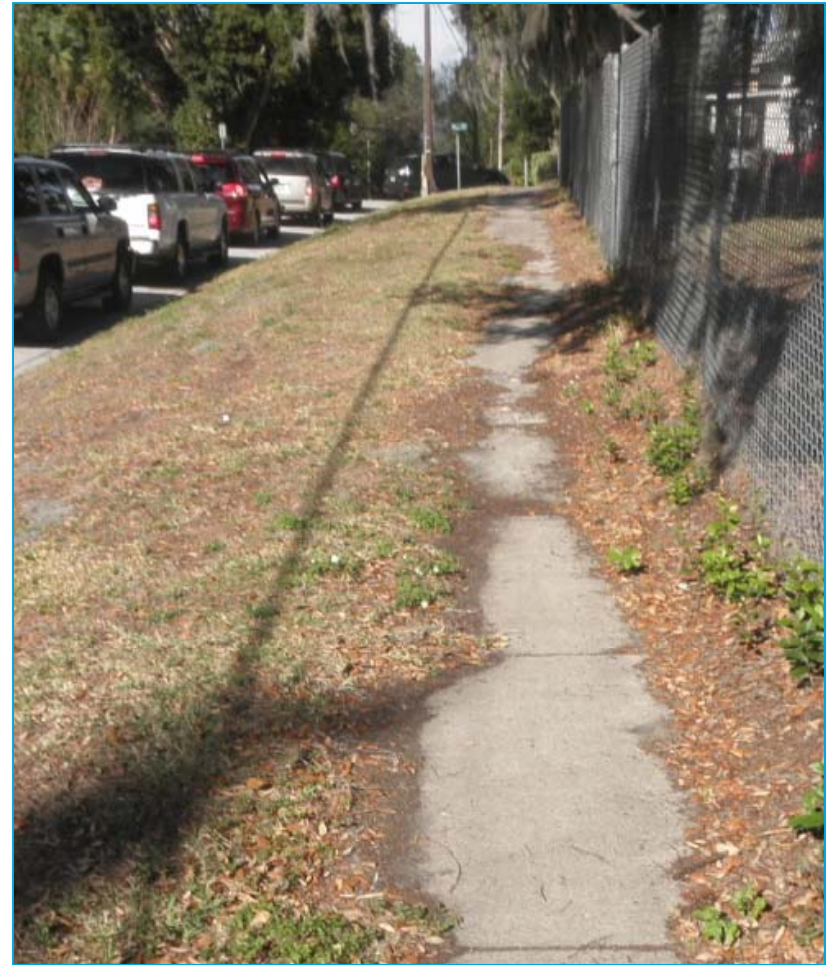
## Sidewalk Repair/Maintenance

### Findings:

- ✓ Portions of the existing sidewalks on East Ave (west side) and 2<sup>nd</sup> Street are in poor condition – overgrown and cracked
- ✓ Cracked sidewalks can be a tripping hazard

### Recommendations:

- ✓ Repair and maintain sidewalks as necessary





A SAFE SCHOOLS TRANSPORTATION STUDY

Cypress Ridge Elementary School

# Priority Project #6

## Replace/Update Signage at Drop-off / Pick-up Loops

### Findings:

- ✓ Existing signage at exit of front drop-off / pick-up loop to East Ave is worn
- ✓ Sign noting times of left turn prohibition is nearly impossible to read
- ✓ Do not enter signs at both drop-off / pick-up loop exits is non-standard

### Recommendations:

- ✓ Replace signs at East Ave driveway exit
- ✓ Use standard MUTCD Do Not Enter signage at both drop-off / pick-up exit driveways







A SAFE SCHOOLS TRANSPORTATION STUDY

## Cypress Ridge Elementary School

# Priority Project #7

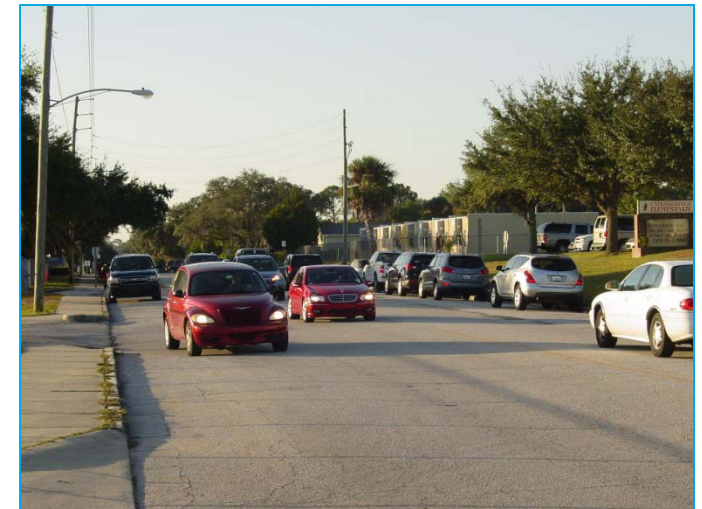
## Restripe East Ave

### Findings:

- ✓ East Ave is currently striped with one travel lane in each direction and on-street parking
- ✓ Traffic movements during arrival & dismissal can be chaotic
- ✓ Curb to curb width of street in front of school is approx. 44 feet; pedestrian crossing distances are long
- ✓ Some on-street parking spaces are marked no parking – they are not used since they interfere with the student pick-up car line
- ✓ City of Clermont plans to reconstruct East Ave

### Recommendations:

- ✓ Evaluate striping changes to provide a northbound left turn lane and southbound right turn lane at the north school driveway
- ✓ Evaluate on-street parking modifications and use of curb extensions from Carroll Street to Oak Street.





**SafeAccess**

A SAFE SCHOOLS TRANSPORTATION STUDY

**Cypress Ridge Elementary School**

## Contact Information

This website represents an ongoing commitment to increase safe access to schools within the Lake~Sumter Metropolitan Planning Organization Planning Area.

Updates to data, and suggestions for programming and project ideas are welcome from all agencies and the general public.

**Mike Woods**

Project Manager, Transportation Planner

(352) 315-0170

[mwoods@lakesumtermpo.com](mailto:mwoods@lakesumtermpo.com)



**Mindy Heath, AICP**

Consultant Project Manager

(407) 420-4200

[Mindy.heath@hdrinc.com](mailto:Mindy.heath@hdrinc.com)



*Promoting Regional  
Transportation Partnerships*