



SafeAccess

A SAFE SCHOOLS TRANSPORTATION STUDY

Clermont Middle School Clermont, FL

CLERMONT
MIDDLE SCHOOL

NO SCHOOL DEC 19-JAN 3, 16, 20
REPORT CARDS JAN 30
NO SCHOOL FEB 20
PROGRESS REPORT FEB 24

DRAFT



WELCOME
Please Report
to the
Office

April 2012

HDR

Lake-Sumter
MPO
Metropolitan
Planning Organization

Clermont Middle School

Clermont Middle School Snapshot

December 7, 2011

Grades: 6th – 8th

Total Students: 702

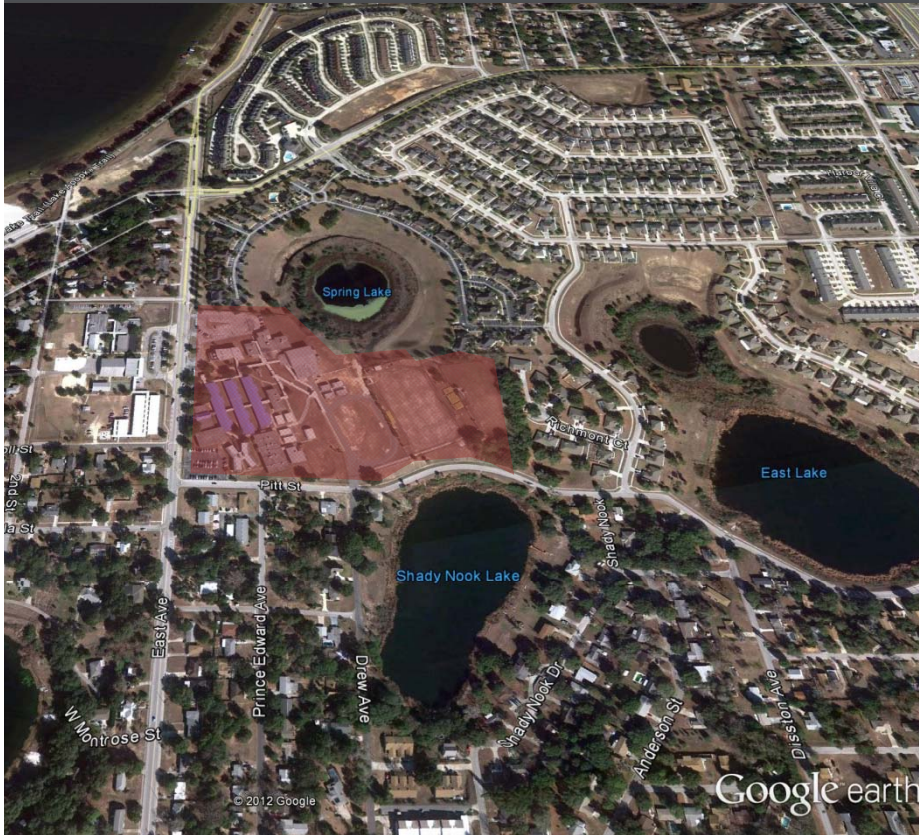
- Provided Bus Transportation : 411
- Not Provided Bus Transportation: 291

Students Living within the “Walk Zone”: 229

- Provided Bus Transportation: 54
- Not Provided Bus Transportation: 175

Observation Day (Partly Cloudy)

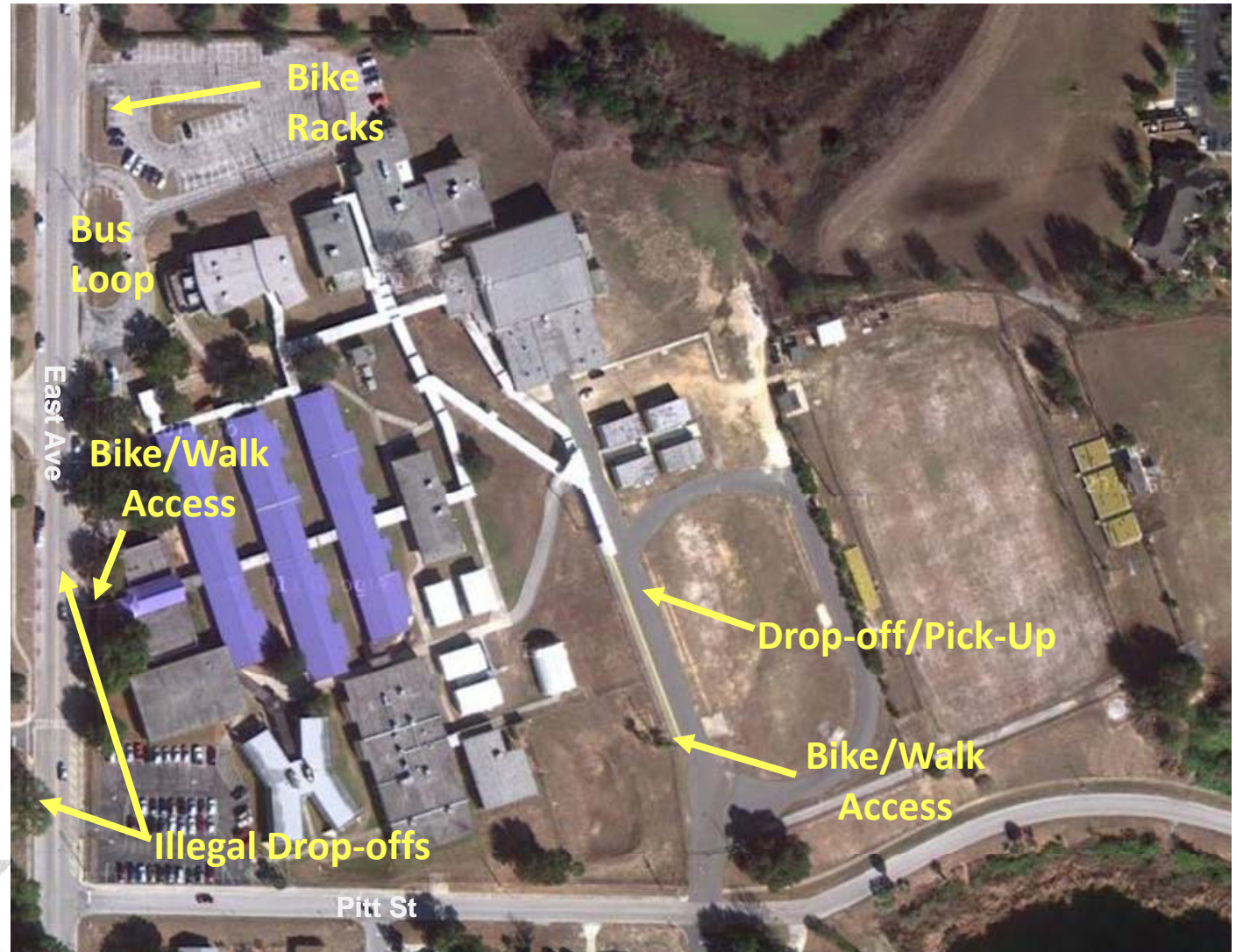
- Walkers: 40
- Bike Riders: 10



- ✓ Clermont Middle School website – Click [here](#)
- ✓ City of Clermont website – Click [here](#)
- ✓ Lake County Schools website – Click [here](#)

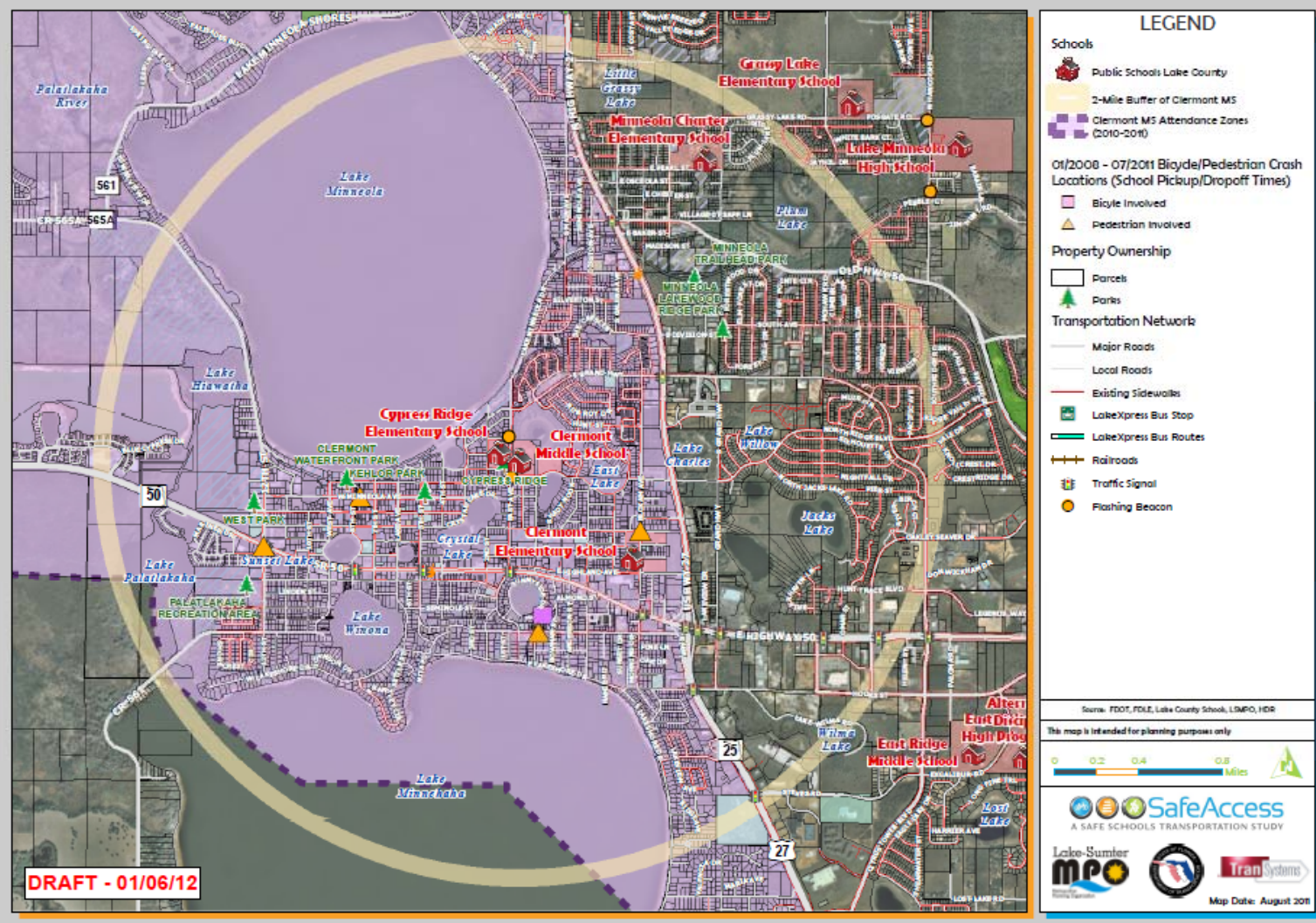
Findings:

- ✓ Current student enrollment is down from approx. 1,100 prior to opening of East Ridge MS
- ✓ Bus loop separated from drop-off/pick-up
- ✓ Significant drop-off/pick-up on East Ave
- ✓ The City of Clermont would like school traffic to be removed from East Ave



Attendance and 2-Mile "Walk" Zone Map

Clermont Middle School: Attendance and 2-Mile "Walk" Zone Map



8:45-9:15 am: Arrival –11-13 Buses Total

8:45 am: Student gates open;
breakfast begins
(approx. 100 students)

9:15 am: School start time

3:57 pm: School end time –
release staggered for
bus riders; bus numbers
called to avoid hallway
congestion

4:02 pm: Walkers released

4:15 pm: After school programs start

*Note: Students are released one hour early
on Wednesdays*





Findings:

- ✓ Bus arrival is staggered in the AM and PM
- ✓ Buses pull up to curb on East Ave if the bus loop is full
- ✓ Buses are stacked using single queue in the PM; bus riders are released from classrooms when bus number is announced to avoid congestion in hallways
- ✓ Some issues with buses exiting on East Ave; sometimes, school staff will help stop traffic to let buses out

Student Drop-off & Pick-up Pitt Street Entrance

Findings:

- ✓ **Queuing concerns along Pitt Street in the PM:**
 - ✓ Road is two lanes wide with no turn lanes currently provided
 - ✓ Issue occurs at 2 times: before the gate to the pick-up area is open, and once the pick-up line fills up and queues back onto the street
 - ✓ Occurs in both directions on Pitt St & on Drew Ave
 - ✓ Results in blocking of through traffic, which creates conflicts from vehicles weaving around the queued traffic
 - ✓ There are some sight distance issues for vehicles passing queued cars due to the grade and curvilinear alignment of the road



Student Drop-off & Pick-up Pitt Street Entrance

Findings:

- ✓ Restriping the car loop to two lanes, narrowing to one lane prior to the start of the pick-up area, will help reduce the off-site queuing & improve safety along Pitt Street; the entire observed queue of vehicles on Pitt St could be accommodated on-site with double stacking
 - ✓ Concept was previously considered by the school, but not used due to staffing requirements
 - ✓ Implement striping & signing design that is intuitive & self-regulating
- ✓ There is no intersection control for exiting traffic at the drop-off driveway, and no marked crosswalk
- ✓ Exiting drivers turning right may not look to their right for crossing students (see photo), leading to conflicts; may need supplemental signage as a reminder to drivers





A SAFE SCHOOLS TRANSPORTATION STUDY

Clermont Middle School

Student Drop-off & Pick-up East Avenue

Findings:

- ✓ The City of Clermont desires that school traffic not use East Avenue for drop-off / pick-up. The school discourages / restricts drop-off / pick-up along East Avenue.
- ✓ Pick-up / drop-off was observed along both sides of East Avenue in the AM and PM. Students dropped off or picked up on East Avenue were observed to cross the street where the vehicle stopped, rather than use a crosswalk.
- ✓ Many students crossed between stopped cars along the roadway.
- ✓ 1 parent pulled over on Carroll Street to pick up.





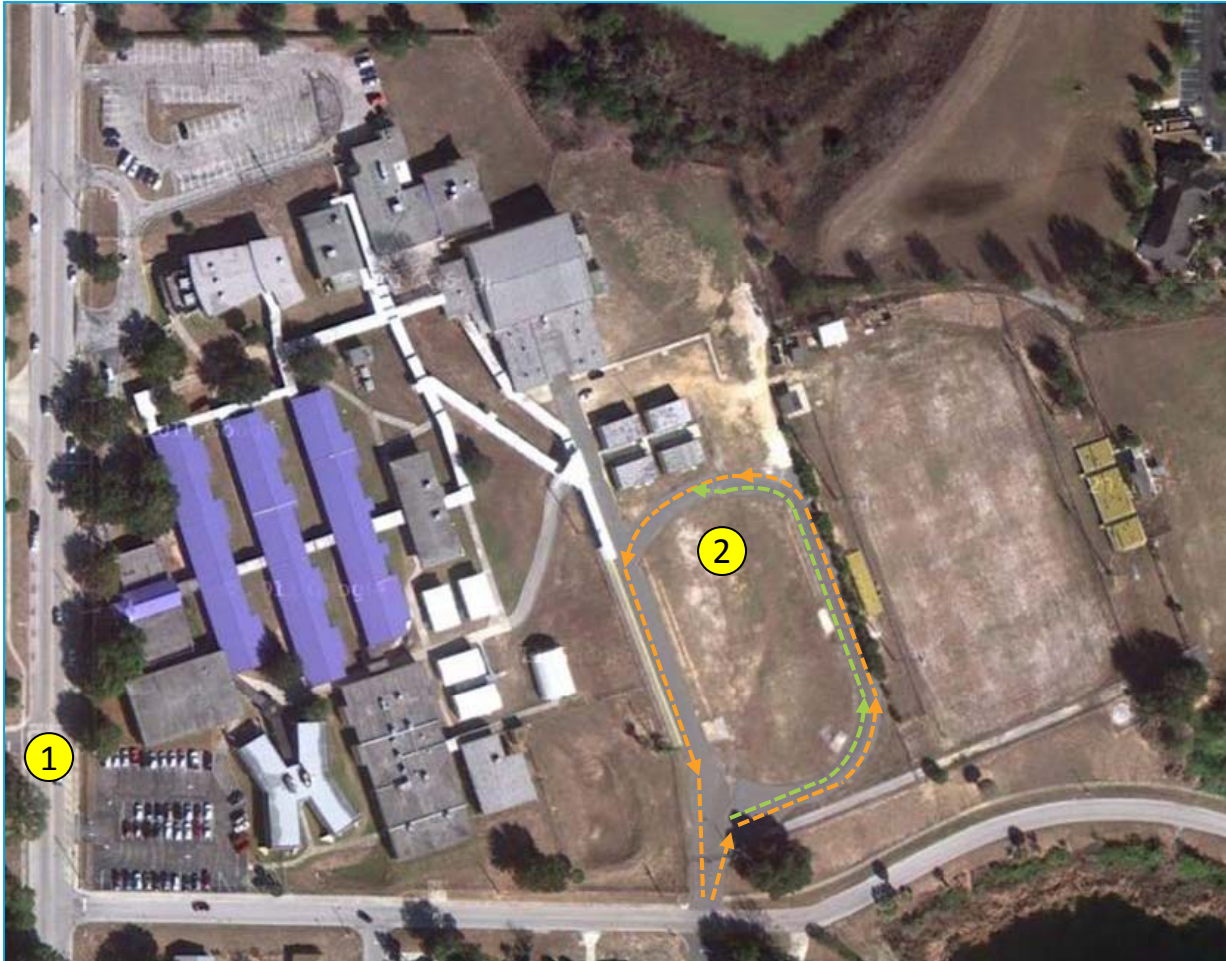
A SAFE SCHOOLS TRANSPORTATION STUDY

Clermont Middle School

Student Drop-off and Pick-up Recommendations

Recommendations:

1. Enhance East Ave crosswalk
2. Stripe parent drop-off/pick-up loop for 2 lanes, narrowing to 1 prior to pick-up area



Drop-off and Pick-up Circulation Concept



Findings:

- ✓ Walkers are allowed to access school at front gate or from car drop-off area (AM)
- ✓ Walkers are released at 4:02 PM and must exit the school using the front gate; approximately 40 walkers observed
- ✓ Difficult to see students in the crosswalk on East Avenue - the crosswalk paint is somewhat faded in this location, also the rolling nature of the road makes the crosswalk (and pedestrians) harder to see
- ✓ Most students crossing from the school used the crosswalk, some reported that cars did not yield
- ✓ Most students waited to make sure cars were yielding
- ✓ 3 students were observed NOT using the crosswalk (PM)
- ✓ 1 bus was observed NOT yielding to a student waiting to cross in the crosswalk
- ✓ 1 student observed walking in road on East Ave

Findings:

- ✓ The East Ave crosswalk at Carroll St does not have a curb ramp on the school side; and the crosswalk does not align well with the ramp on the Carroll St side; crosswalk is not very visible from the road; crosswalk on west leg across Carroll St uses transverse lines only
- ✓ Several of the existing curbs at school driveways are not ADA compliant or have maintenance issues and create trip hazards

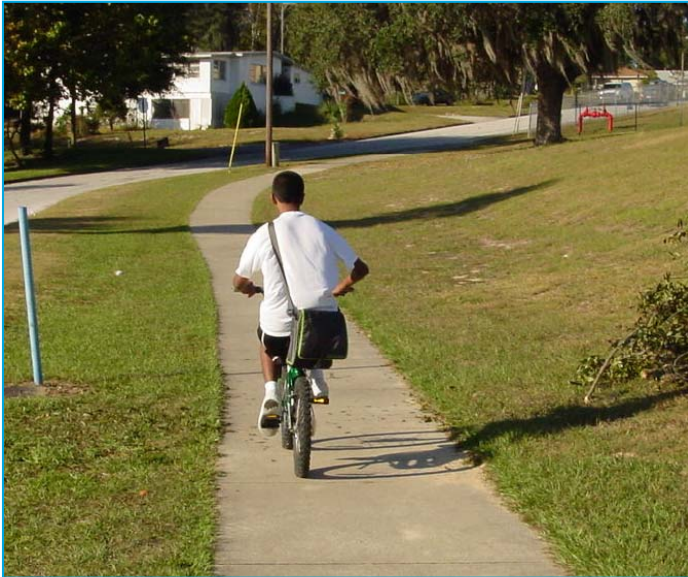




Findings:

- ✓ The sidewalk on Prince Edward Ave that ends at Pitt St has a curb ramp, but no receiving ramp at the sidewalk on the north side of Pitt St, and no marked crosswalk
- ✓ The existing sidewalk in the drop-off/pick-up area ends prior to Pitt St, and students using this access in the AM have to walk in the street





Findings:

- ✓ No bicycle safety program is offered at this time; school occasionally uses intercom to remind students to use crosswalks
- ✓ Students from the north have a connection to the Lake Minneola Scenic Trail using a wide sidewalk on the east side of East Ave
- ✓ Three bike racks are provided at the faculty parking lot – these are poorly placed from a security perspective (theft is an issue for unlocked bikes), and are the “wheel bender” style
- ✓ School will rent extra lockers for skateboards storage

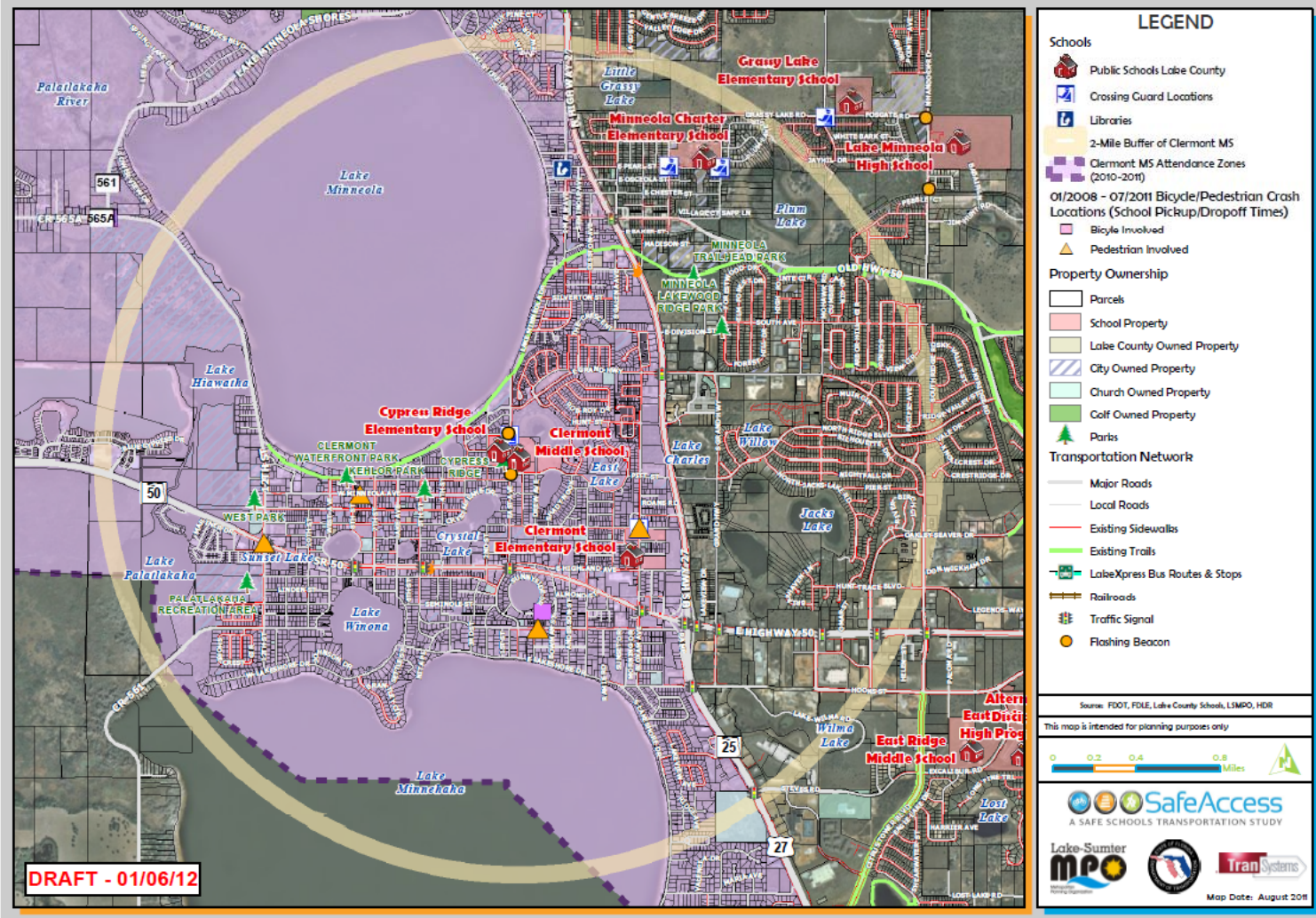




Recommendations:

- ✓ Mark crosswalks; some crossings/ramps not smooth & may present tripping hazard
- ✓ Mark crosswalk (relocate crosswalk at Carroll St)
- ✓ Mark crosswalk, add school crossing signage, and construct curb ramp on north side of Pitt St
- ✓ Mark crosswalk; add stop bar and stop sign for traffic exiting school driveway on Pitt St
- ✓ Mark crosswalk, add school crossing signage, and construct curb ramp on north side of Pitt St
- ✓ Connect existing sidewalk on school property to Pitt St sidewalk
- ✓ Sidewalk needs maintenance in some locations along Pitt St (sand covers walkway)
- ✓ Mark crosswalk, add school crossing signage, and construct curb ramp on south side of Desoto St

Clermont Middle School: Existing Conditions Map



Findings:

- ✓ The City of Clermont has recently installed several new sidewalks in the vicinity of the school, including sidewalks on School St, Juniata St, & Scott St & Prince Edward Ave between Desoto St and Pitt St
- ✓ The City has a planned project in 2012 to reconstruct East Ave from SR 50 to Lake Minneola, which presents an opportunity to look at pedestrian, bicyclist, parking, and turning traffic needs in this corridor
- ✓ The City has a similar planned project in 2013 or 2014 to reconstruct Pitt St from East Ave to Grand Hwy with potential to consider pedestrian, bicycle, and turning traffic needs

Recommendations:

- ✓ Coordinate with the City on the planned maintenance/ improvement of these roadways to included needed projects – evaluate turn lanes, on-street parking, curb extensions, etc.



Clermont Middle School

Project Number	Roadway	Location	Project
1	East Ave	at Carroll St	Construct curb extensions; construct curb ramp on E side of street
	East Ave	at front school entrance	Mark crosswalk (relocate crosswalk at Carroll St)
2	East Ave	at school driveways	Mark crosswalks; some crossings/ramps not smooth & may present tripping hazard
	Pitt St	at Prince Edward Ave	Mark crosswalk, add school crossing signage, and construct curb ramp on N side of street
	Pitt St	at school driveway	Mark crosswalk; add stop bar and stop sign for traffic exiting school driveway
	Pitt St	at Scott St	Mark crosswalk, add school crossing signage, and construct curb ramp on N side of street
3	At school	Pitt St school driveway	Stripe parent drop-off/pick-up loop for 2 lanes, narrowing to 1 prior to pick-up area
	At school	Pitt St school driveway	Connect existing sidewalk on school property to Pitt St sidewalk
4	Desoto St	at Prince Edward Ave	Mark crosswalk, add school crossing signage, and construct curb ramp on S side of street

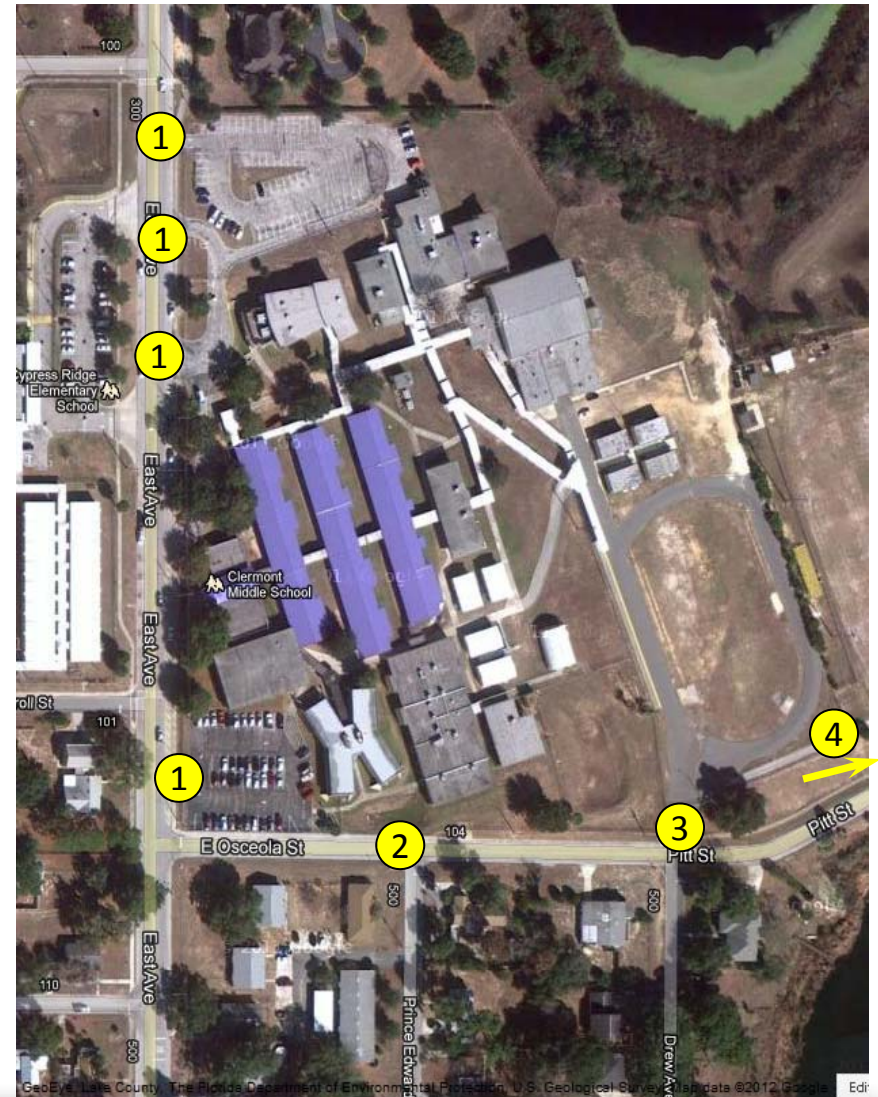
Recommendations:

- ✓ The City has planned a reconstruction and resurfacing project for East Avenue north of SR 50 for fiscal year 2012. Coordinate with the City to include recommendations within the resurfacing project.
- ✓ There are two potential options for improving the crosswalk on East Avenue:
 1. On East Avenue, at Carroll Street, construct curb extensions and new curb ramps.
 2. In front of the school entrance, mark a new crosswalk (relocated Carroll Street crosswalk). There may be issues with the grade change between the roadway and the existing sidewalk.



Recommendation:

- ✓ Make crosswalk improvements at the following locations:
 1. Inspect all East Ave school driveways for ADA compliance and trip hazards; modify as needed
 2. Construct curb ramp on the north side of street at Pitt St at Prince Edward Ave; add high visibility crosswalk markings & school crossing signage
 3. Add stop bar and stop sign for exiting traffic from school at Pitt Street and school driveway; add high visibility crosswalk markings
 4. Construct curb ramp on the north side of street at Pitt St at Scott St (off map); add high visibility crosswalk markings & school crossing signage





A SAFE SCHOOLS TRANSPORTATION STUDY

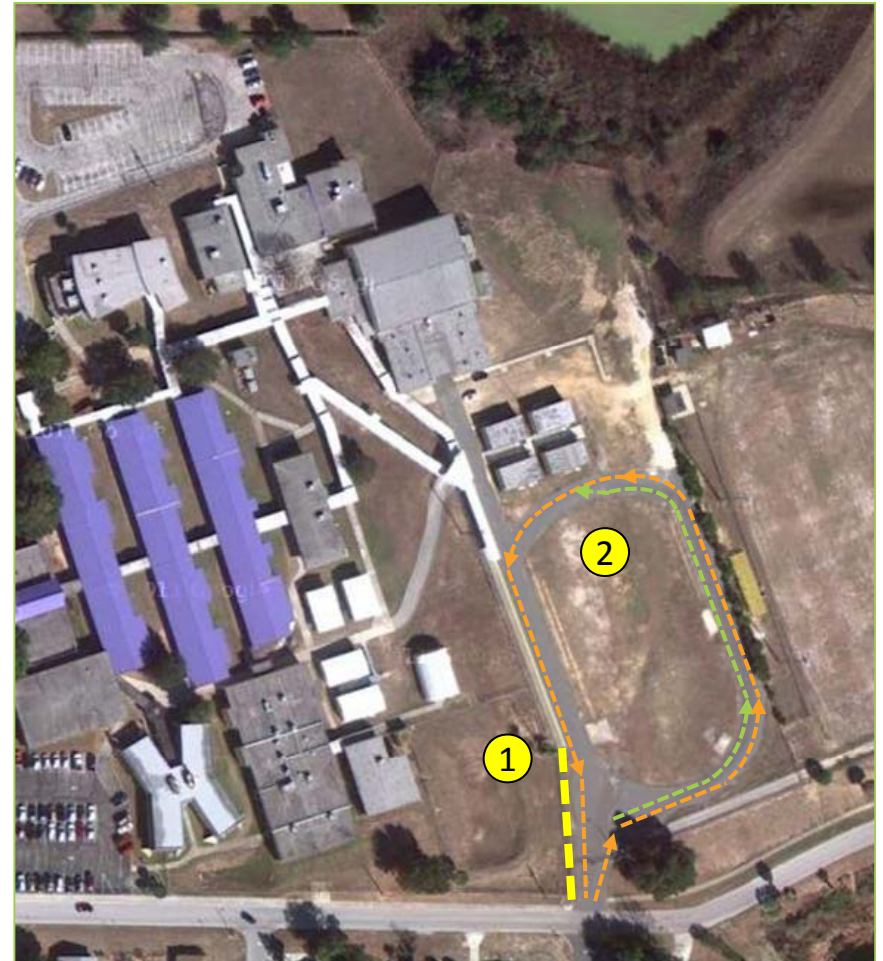
Clermont Middle School

Recommended Project #3

Drop-off / Pick-Up location improvements

Recommendation:

- ✓ Restripe the parent drop-off / pick-up loop for two lanes, narrow to one lane prior to pick up area
- ✓ Connect existing sidewalk on school property to Pitt Street sidewalk; will require relocating existing fence

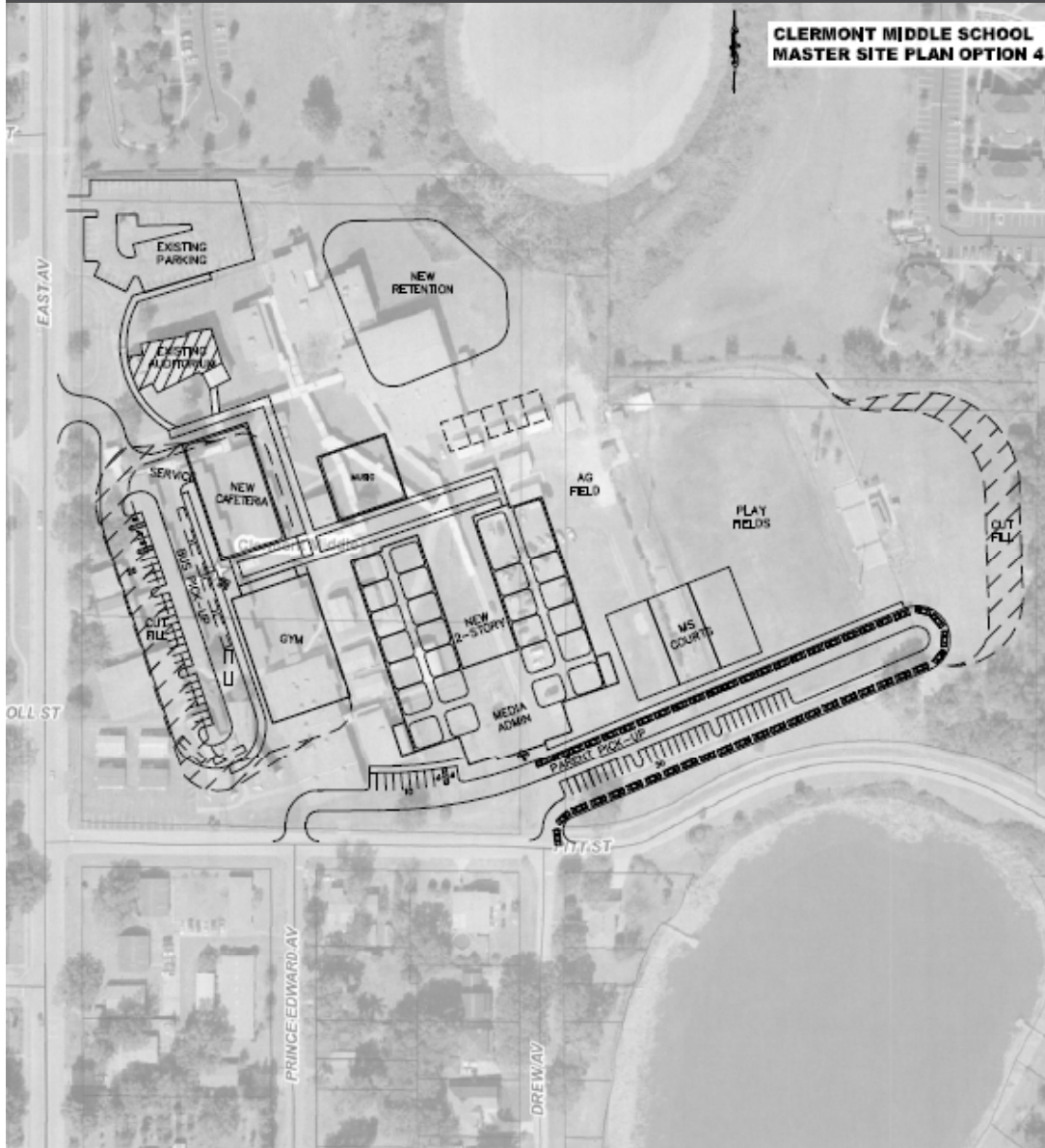


Recommendation:

- ✓ Mark the crosswalk adding school crossing signs and construct a curb ramp on the south side of the street at Desoto Street and Prince Edward Avenue.



CLERMONT MIDDLE SCHOOL
MASTER SITE PLAN OPTION 4



Findings:

- ✓ School would front on Pitt St
- ✓ Option 4 with modifications preferred
 - ✓ Move gym to east side of main building
 - ✓ Move cafeteria to gym location
 - ✓ Move music building to cafeteria location
 - ✓ Create presence on East Ave by moving admin building there or an architectural feature
- ✓ Concept does not show pedestrian access



Clermont Middle School

Contact Information

This website represents an ongoing commitment to increase safe access to schools within the Lake~Sumter Metropolitan Planning Organization Planning Area.

Updates to data, and suggestions for programming and project ideas are welcome from all agencies and the general public.

Mike Woods

Project Manager, Transportation Planner

(352) 315-0170

mwoods@lakesumtermpo.com



Mindy Heath, AICP

Consultant Project Manager

(407) 420-4200

Mindy.heath@hdrinc.com



*Promoting Regional
Transportation Partnerships*