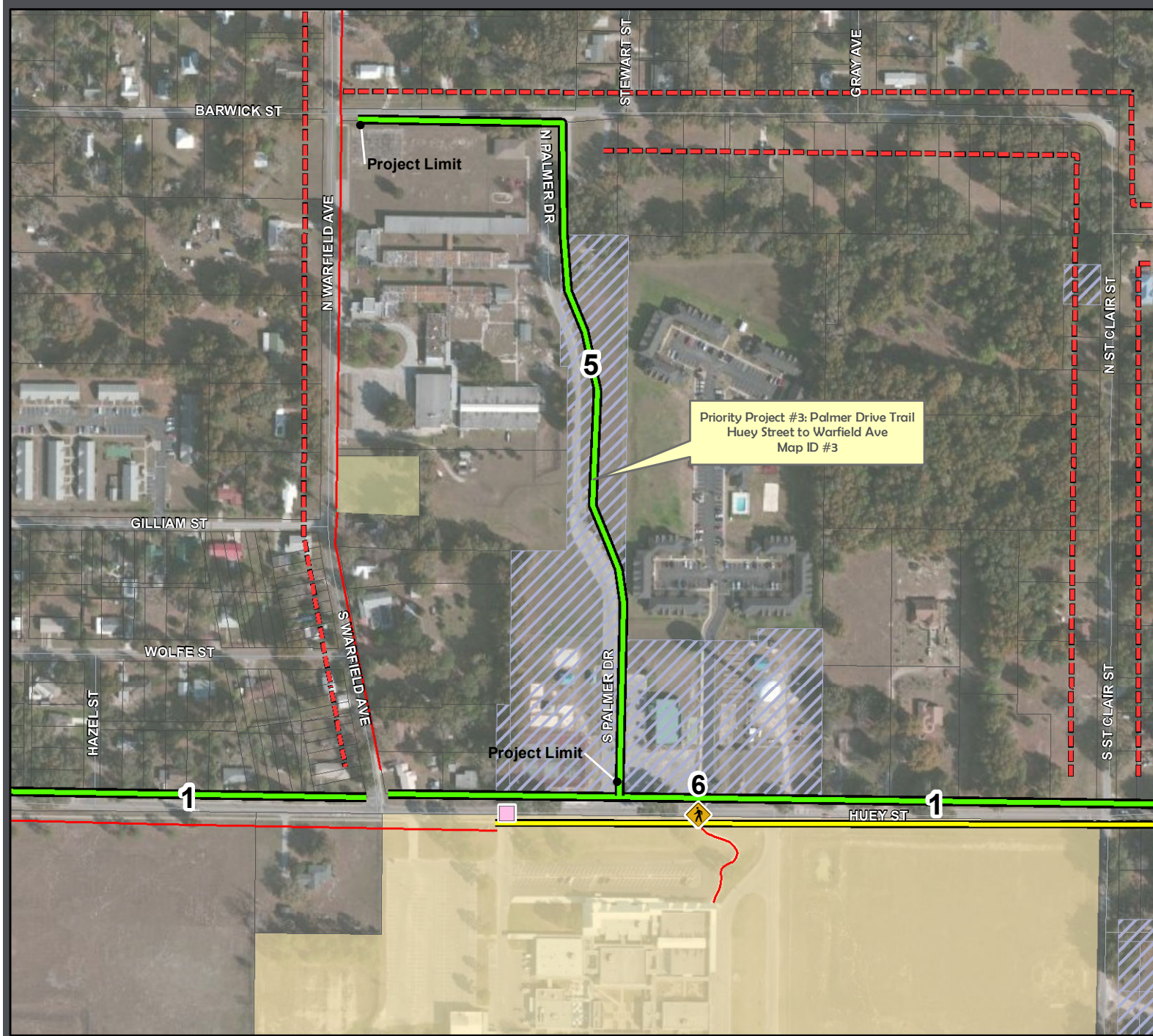


Priority Project #3: Palmer Drive Trail - ID #5



LEGEND

- Safe Access Schools Studied
- Existing Sidewalks and Trails**
- Existing Sidewalks
- Existing Trails
- SAS Projects Identified**
- SAS Priority Project #4 (Map ID#6) Intersection/Crosswalk Improvement
- SAS Priority Projects (By Project ID#) Sidewalk Improvements
- Priority Project #3 (Map ID #5) Trail Improvements
- SAS Recommended Projects - Sidewalks
- SAS Recommended Projects - Trails
- 2008 - December 2011 Bicycle/Pedestrian Involved Crash Locations During School Pickup & Dropoff Times (7:00-8:00 AM & 2:30-3:30 PM)**
- Bicyclist Involved
- Pedestrian Involved
- Road System**
- Major Roads
- Local Roads
- Other Layers**
- 2-Mile Buffer of Wildwood Middle High School
- Parcels
- School Property - Public
- Church Owned Property
- County Owned Property
- City Owned Property
- Railroad
- Traffic Signal

Source: FDOT, LSMPO, Sumter County GIS, and TranSystems

This map is intended for planning purposes only



Map Date: April 2012