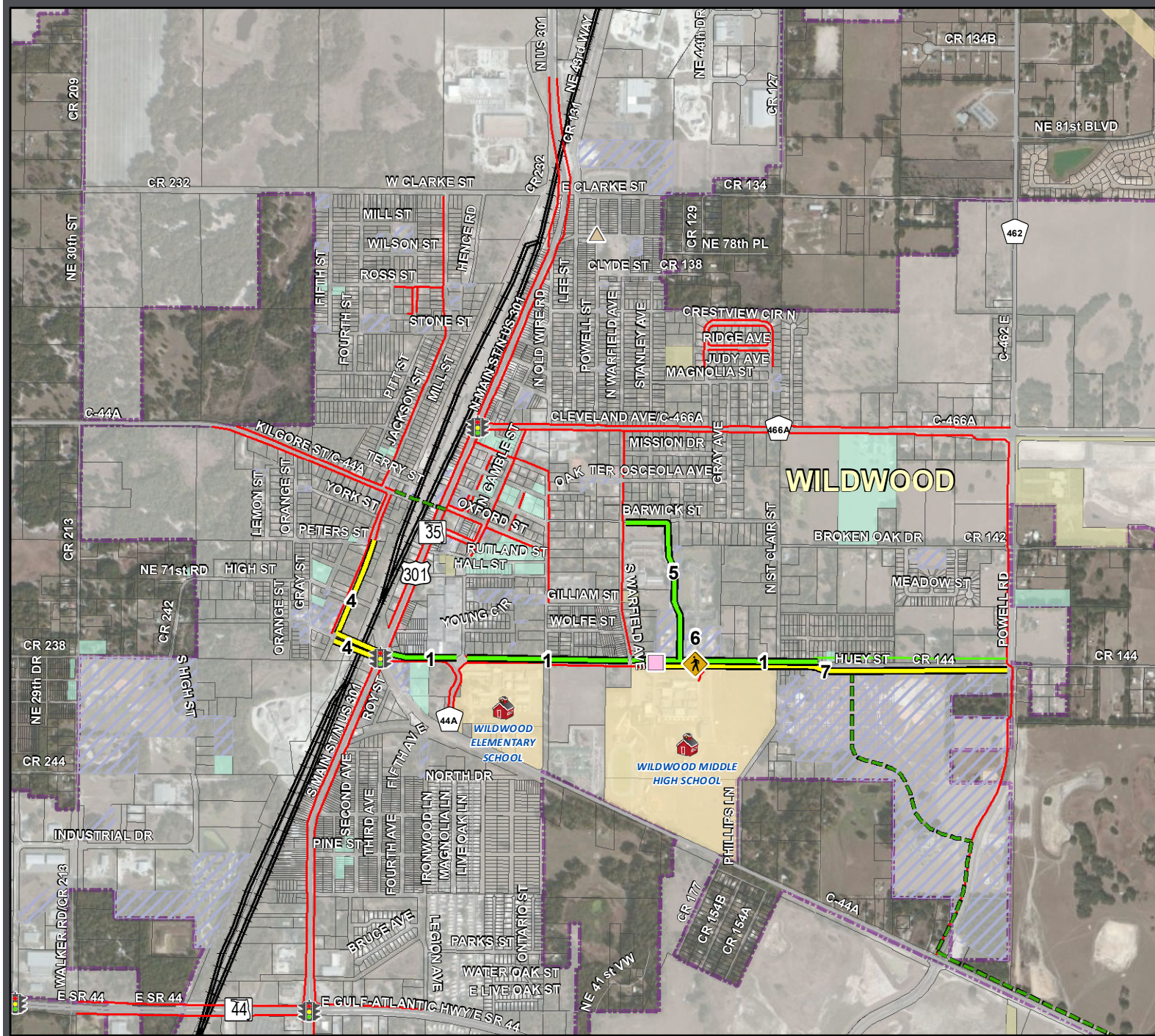


Wildwood Elementary School: Transportation Access Master Plan Map



LEGEND

- Safe Access Schools Studied
- Existing Sidewalks and Trails**
 - Existing Sidewalks
 - Existing Trails
- SAS Projects Identified**
 - SAS Priority Projects (By Project ID#) Intersection/Crosswalk Improvement
 - SAS Priority Projects (By Project ID#) Sidewalk Improvements
 - SAS Priority Projects (By Project ID#) Trail Improvements
 - SAS Recommended Projects - Sidewalks
 - SAS Recommended Projects - Trails

2008 - December 2011 Bicycle/Pedestrian Involved Crash Locations During School Pickup & Dropoff Times (7:00-8:00 AM & 2:30-3:30 PM)

- Bicyclist Involved
- Pedestrian Involved
- Road System**
 - Major Roads
 - Local Roads
- Other Layers**
 - 2-Mile Buffer of Wildwood Elementary School
 - Parcels
 - School Property - Public
 - Church Owned Property
 - County Owned Property
 - City Owned Property
 - Railroad
 - Traffic Signal

Source: FDOT, LSMPO, Sumter County GIS, and TranSystems

This map is intended for planning purposes only



Map Date: April 2012