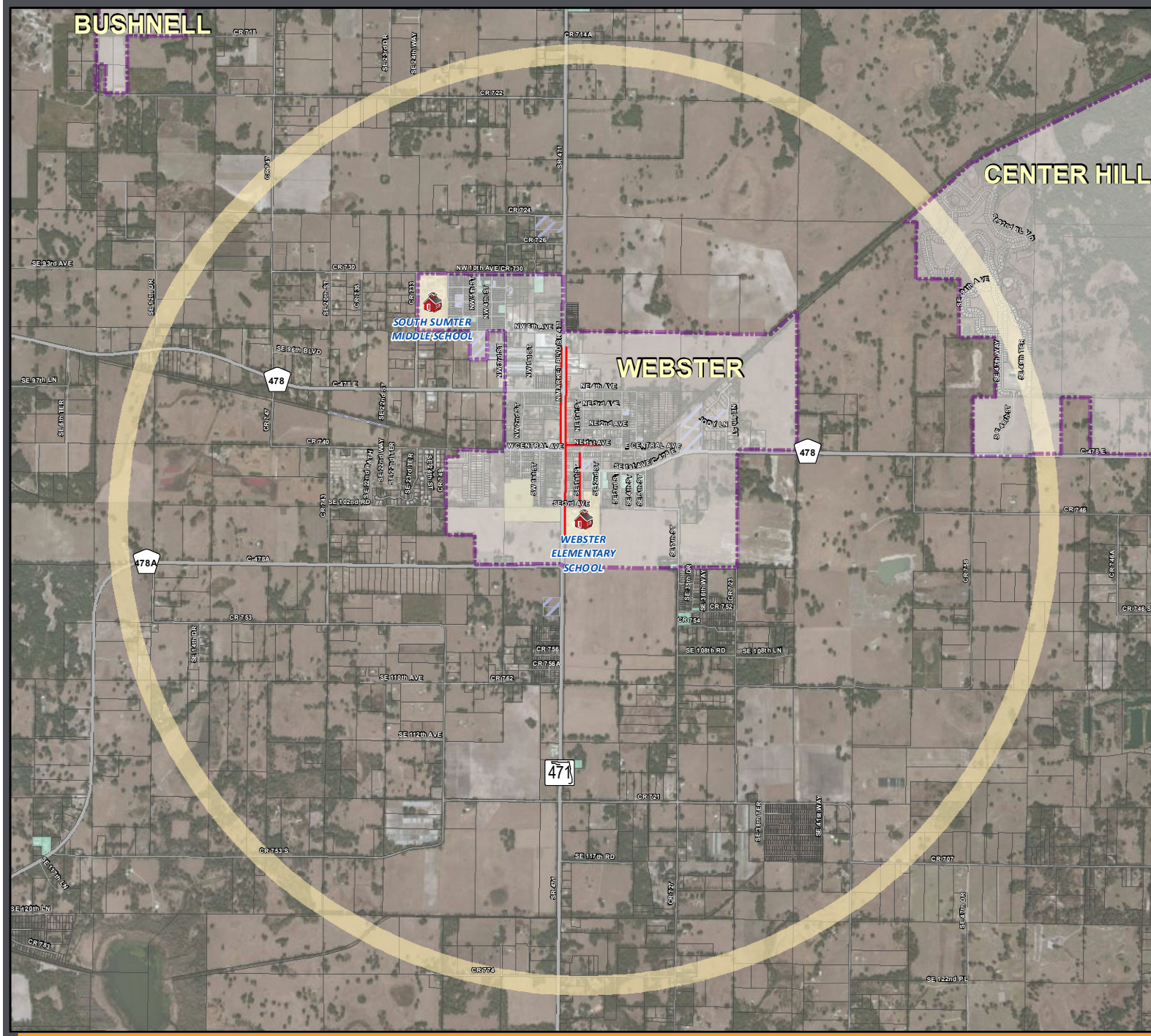


Webster Elementary School: Existing Conditions Map



LEGEND

Safe Access Schools Studied

Existing Sidewalks and Trails

Existing Sidewalks

Existing Trails

2008 - December 2011 Bicycle/Pedestrian Involved Crash Locations During School Pickup & Dropoff Times (7:00-7:55 AM & 2:30-3:00 PM)

Bicyclist Involved (No Occurrence Within Timeframe)

Pedestrian Involved (No Occurrence Within Timeframe)

Road System

Major Roads

Local Roads

Other Layers

2-Mile Buffer of Webster Elementary School

Parcels

School Property - Public

Church Owned Property

County Owned Property

City Owned Property

Railroad

Traffic Signal

Source: FDOT Sumter County GIS, Hoke Design, Inc, and TransSystems

This map is intended for planning purposes only



Safe Access
A SAFE SCHOOLS TRANSPORTATION STUDY



Map Date: April 2012