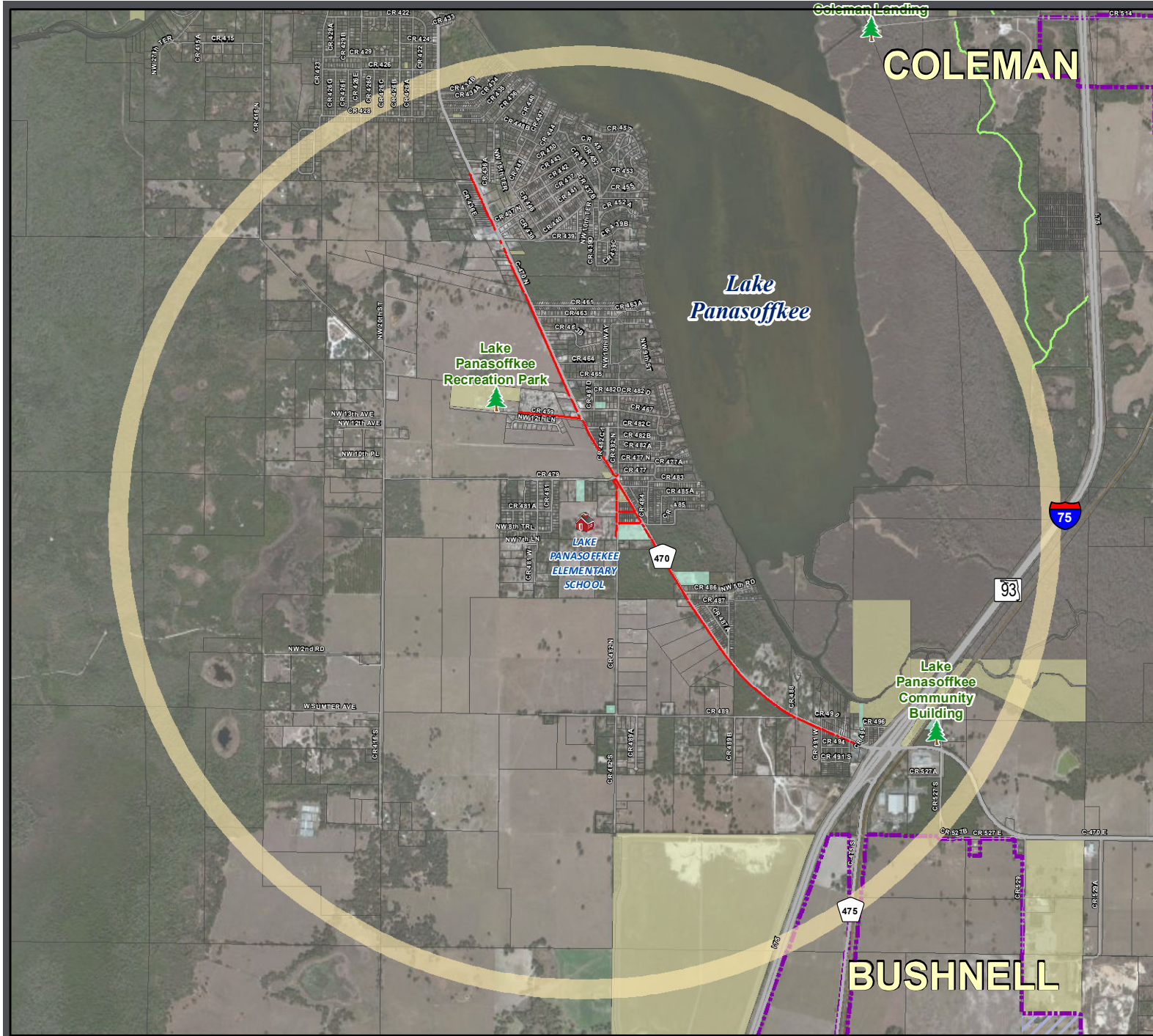


Lake Panasoffkee Elementary School: Existing Conditions Map



LEGEND

- Safe Access Schools Studied
- 2008 - December 2011 Bicycle/Pedestrian Involved Crash Locations During School Pickup & Dropoff Times (7:00-8:00 AM & 3:30-4:30 PM)
 - Bicyclist Involved (No Occurrence Within Timeframe)
 - Pedestrian Involved (No Occurrence Within Timeframe)
- Road System
 - Major Roads
 - Local Roads
- Other Layers
 - Existing Sidewalks
 - 2-Mile Buffer of Lake Panasoffkee Elementary School
 - Parcels
 - School Property - Public
 - Church Owned Property
 - County Owned Property
 - City Owned Property
 - Water
 - Railroad
 - Traffic Signal

Source: FDOT Sumter County GIS, Hoke Design, Inc, and TranSystems

This map is intended for planning purposes only



Map Date: April 2012