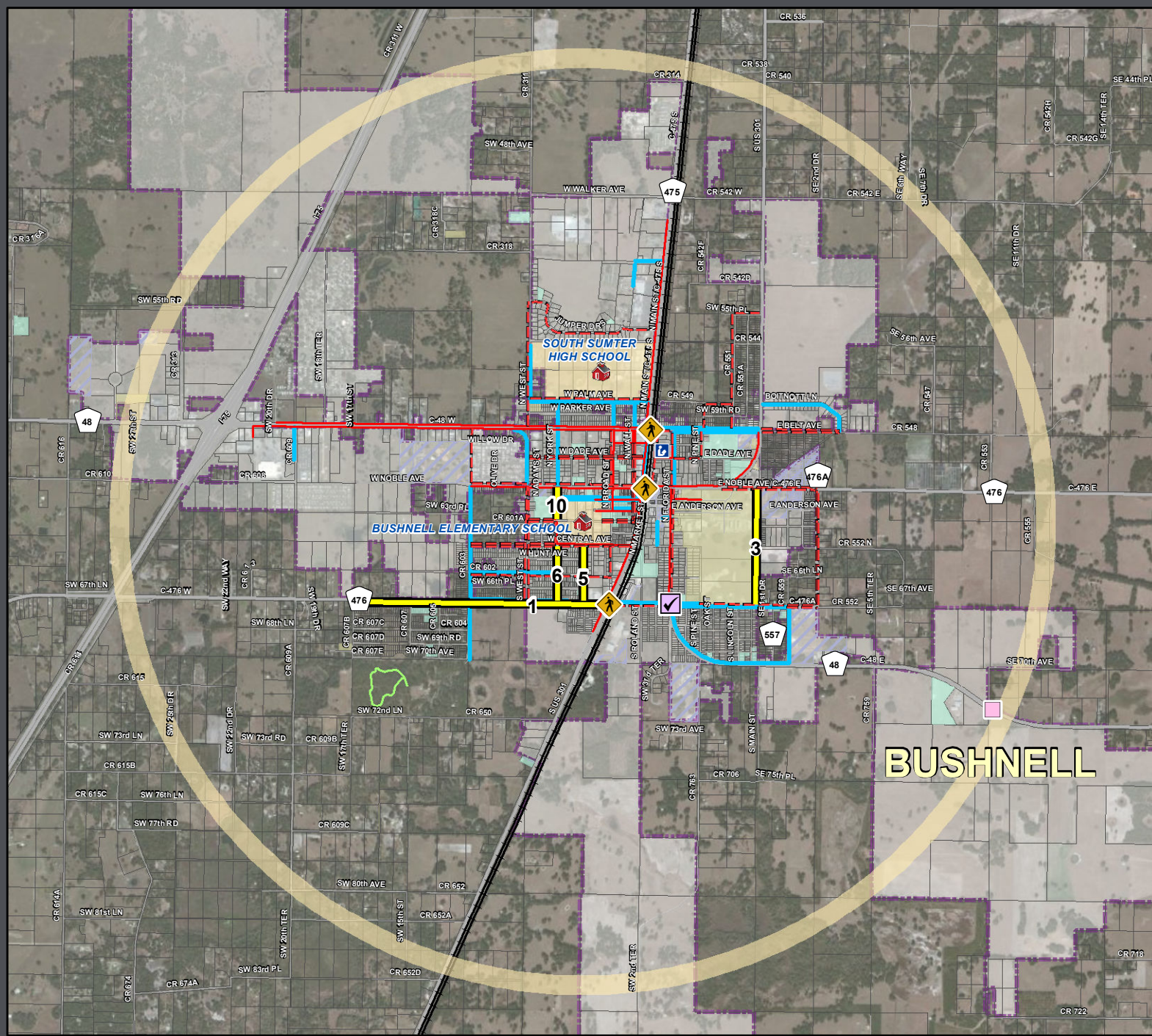


# Bushnell Elementary School: Transportation Access Master Plan Map



## LEGEND

- Safe Access Schools Studied
- Library
- City of Bushnell Sidewalk/Trails Improvements (City of Bushnell Capital Improvements Plan)
  - Seminole Avenue/Florida Street Intersection Improvement
  - Pedestrian Gate Improvement Location
  - Sidewalk and/or Multi-Use Trail Enhancements
- Existing Sidewalks and Trails
  - Existing Sidewalks
  - Existing Trails
- SAS Projects Identified
  - SAS Priority Projects (By Project ID#) Sidewalk and Trail Improvements
  - SAS Recommended Projects - Sidewalks
- 2008 - December 2011 Bicycle/Pedestrian Involved Crash Locations During School Pickup & Dropoff Times (7:00-8:00 AM & 2:30-3:30 PM)
  - Bicyclist Involved
  - Pedestrian Involved
- Road System
  - Major Roads
  - Local Roads
- Other Layers
  - 2-Mile Buffer of Bushnell Elementary School
  - Parcels
  - School Property - Public
  - Church Owned Property
  - County Owned Property
  - City Owned Property
  - Railroad
  - Traffic Signal

Source: FDOT, LSMPD, Sumter County GIS, and TranSystems

This map is intended for planning purposes only



A SAFE SCHOOLS TRANSPORTATION STUDY

Metropolitan Planning Organization

FLORIDA DEPARTMENT OF TRANSPORTATION

Map Date: April 2012